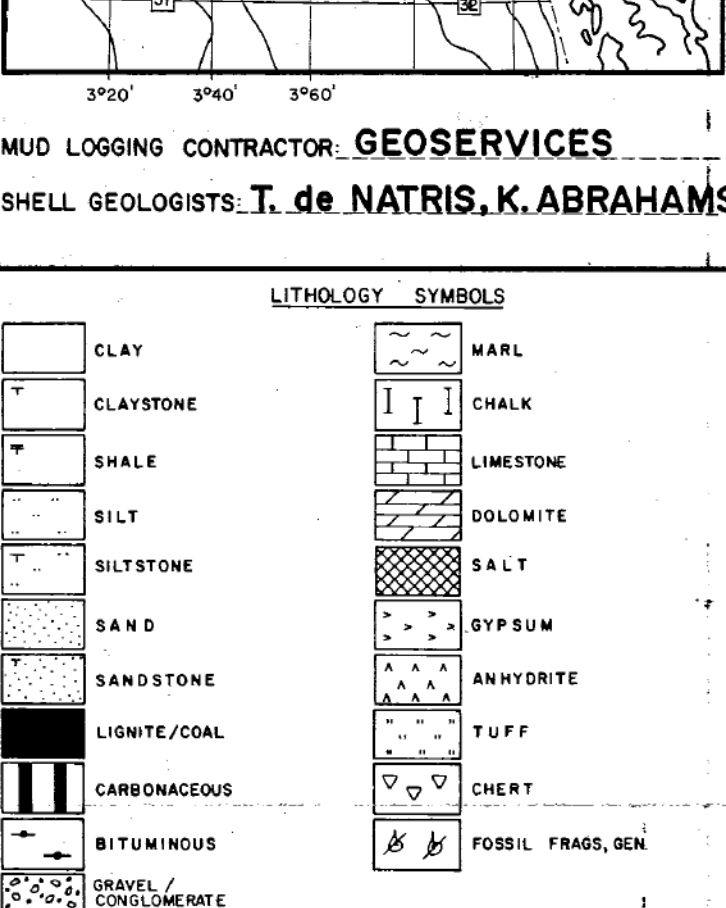


**COMPLETION LOG**

**a-s Norske Shell, E & P**  
**COMPLETION LOG WELL: 31/2-6**

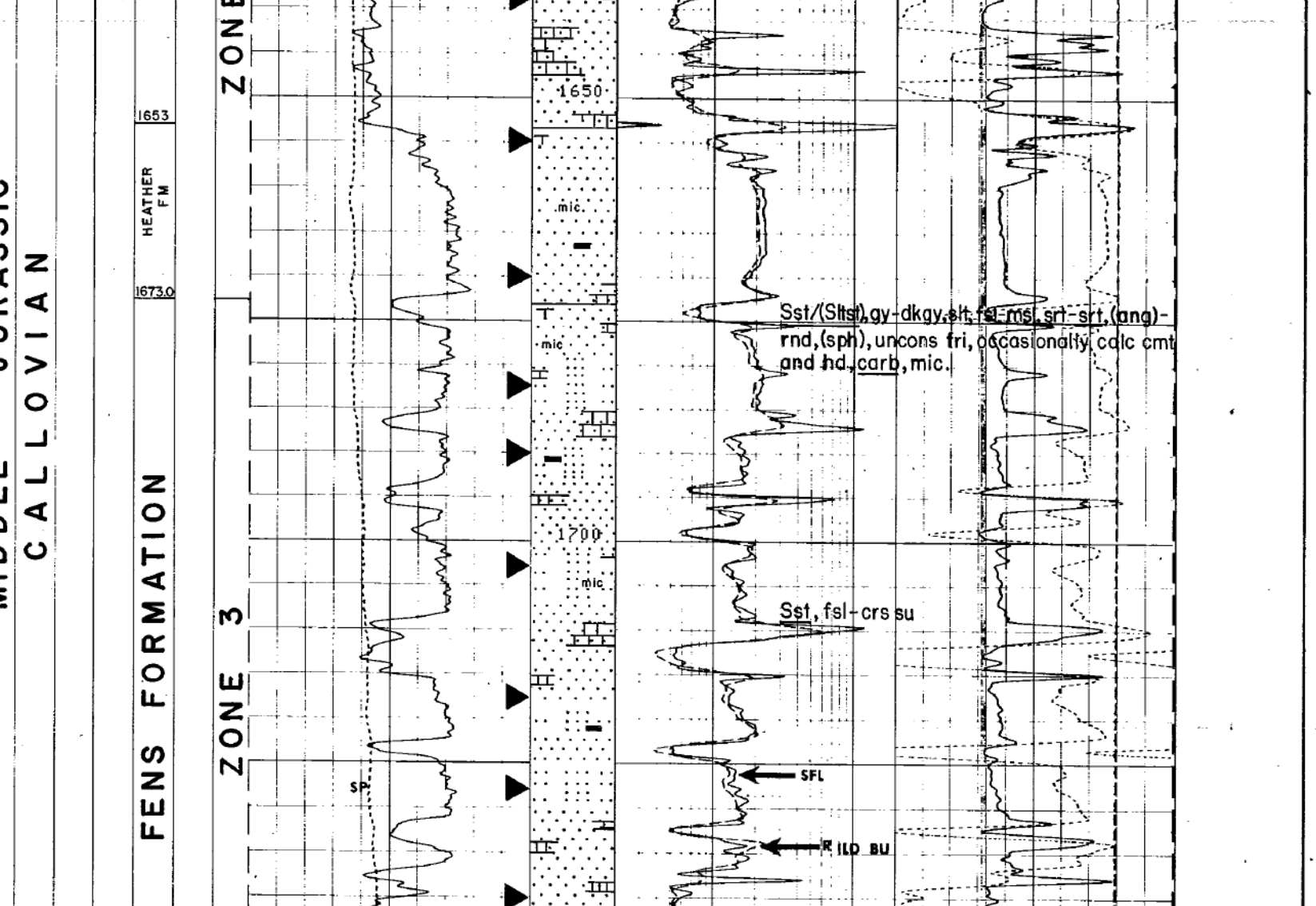
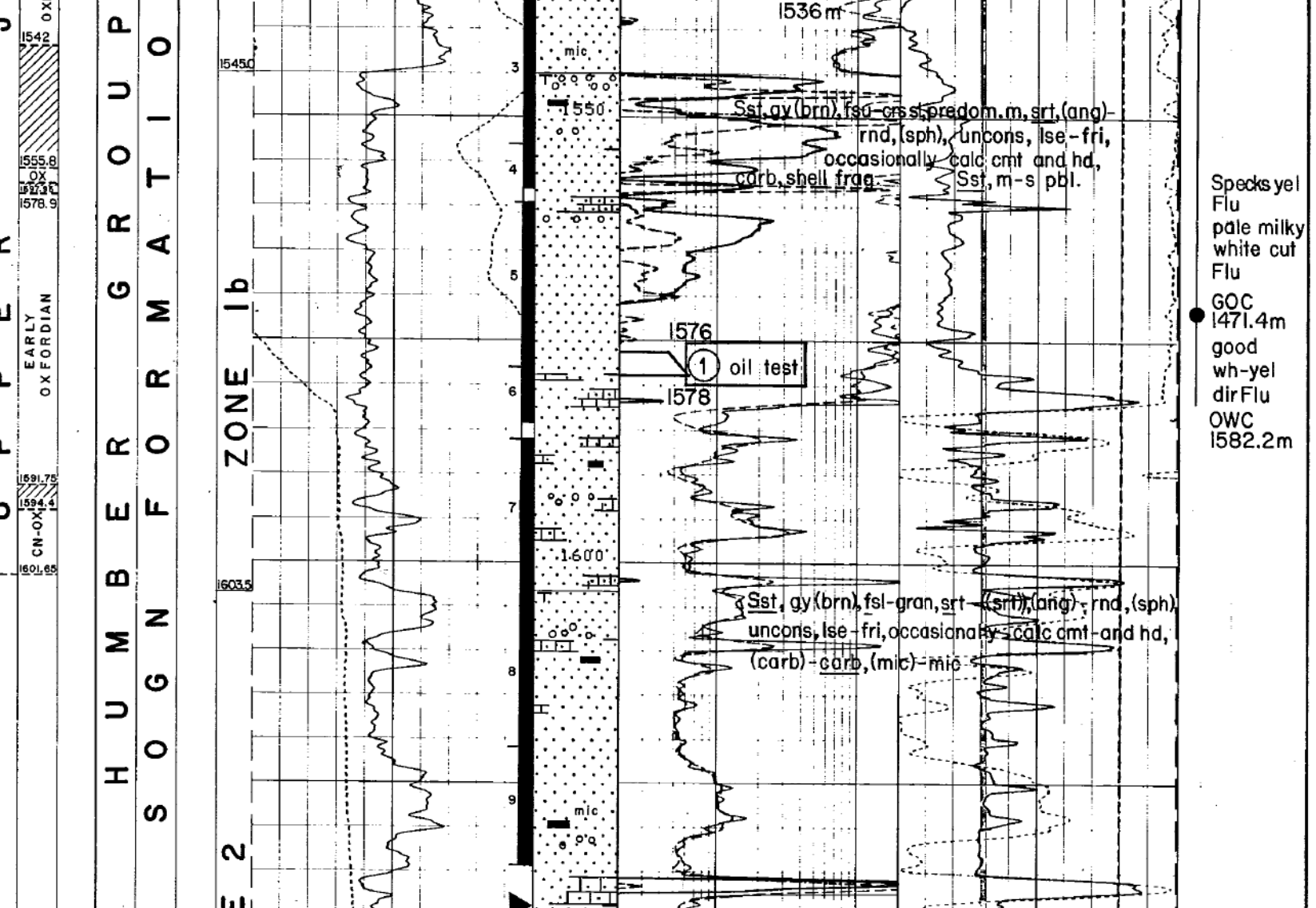
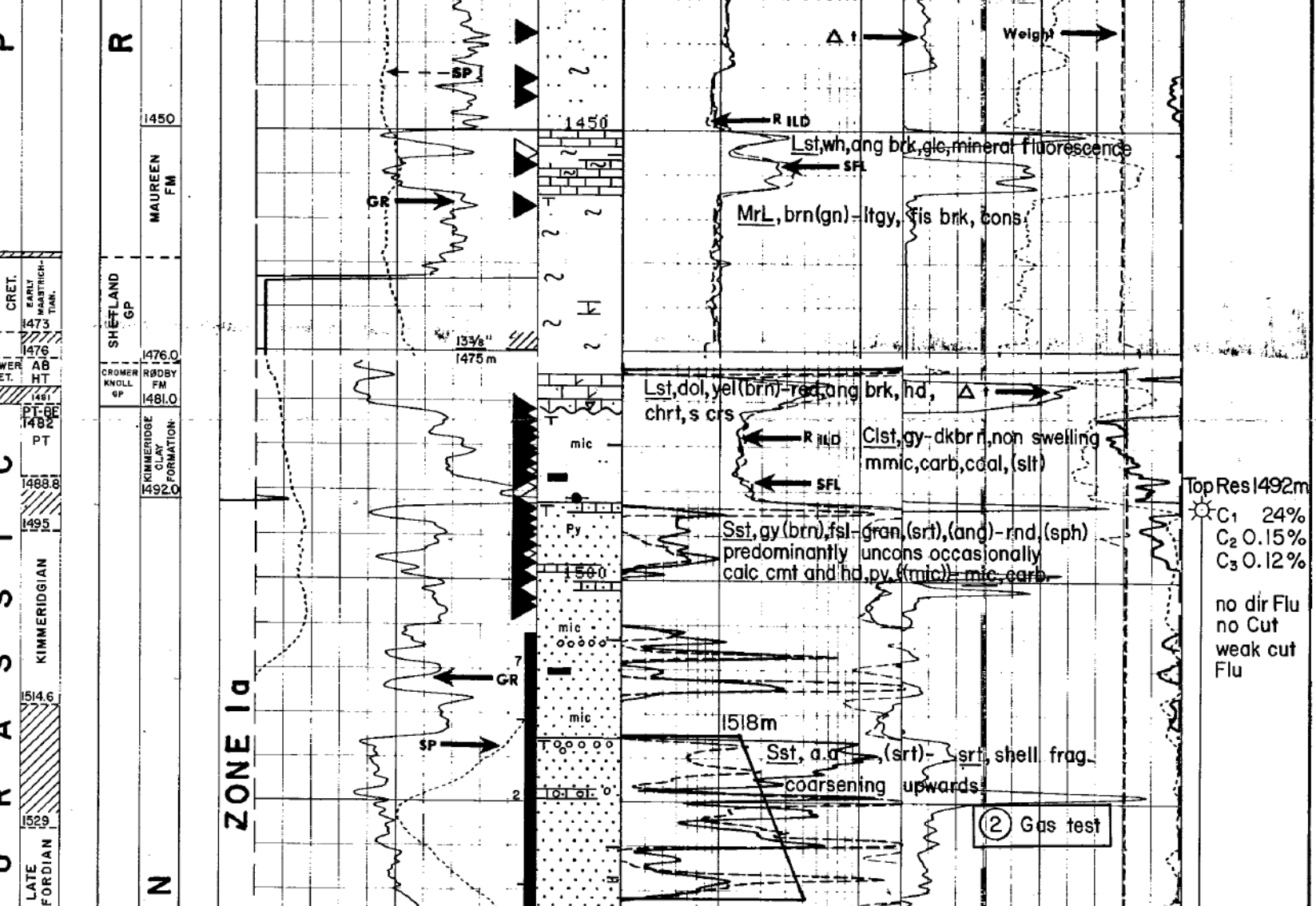
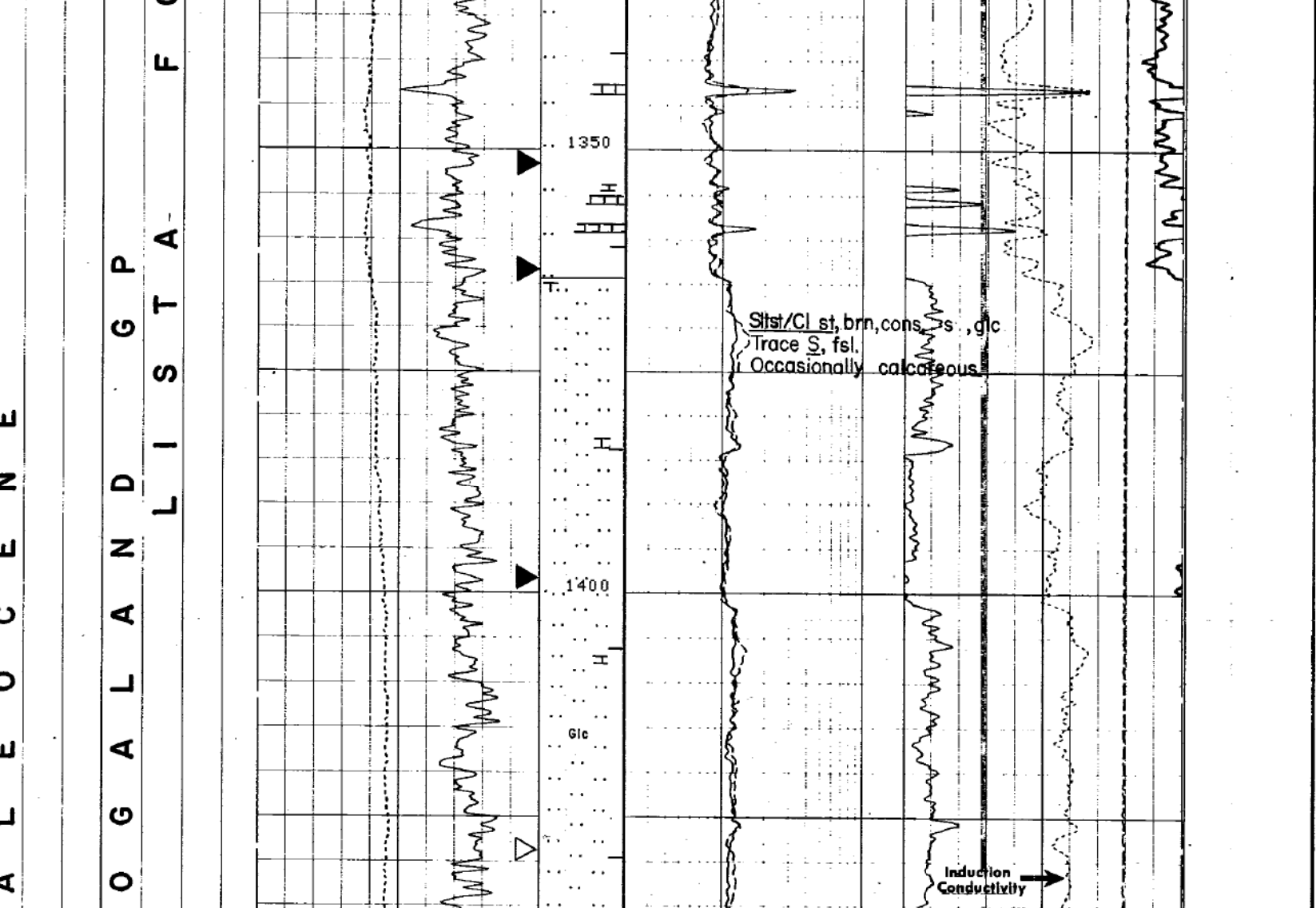
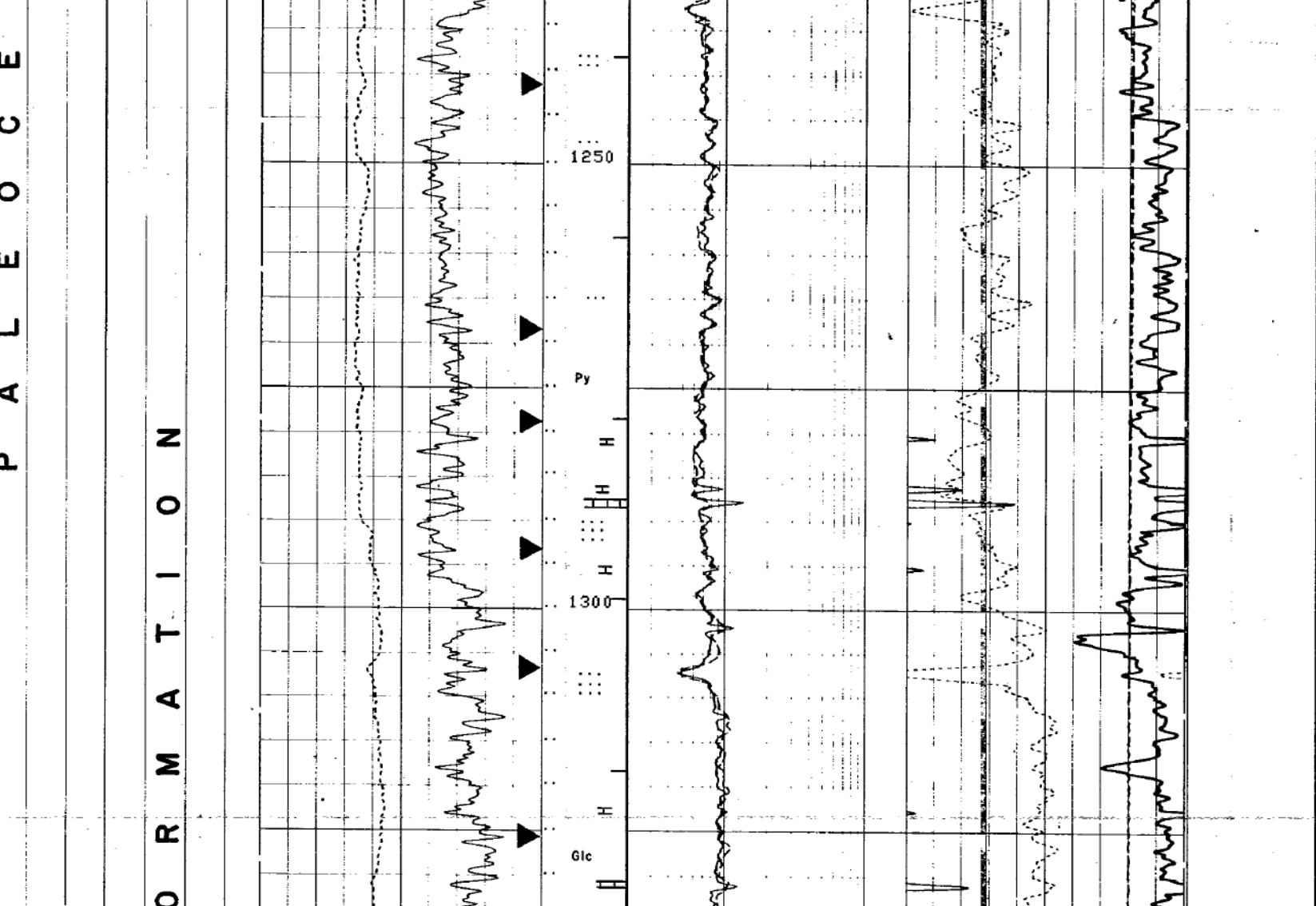
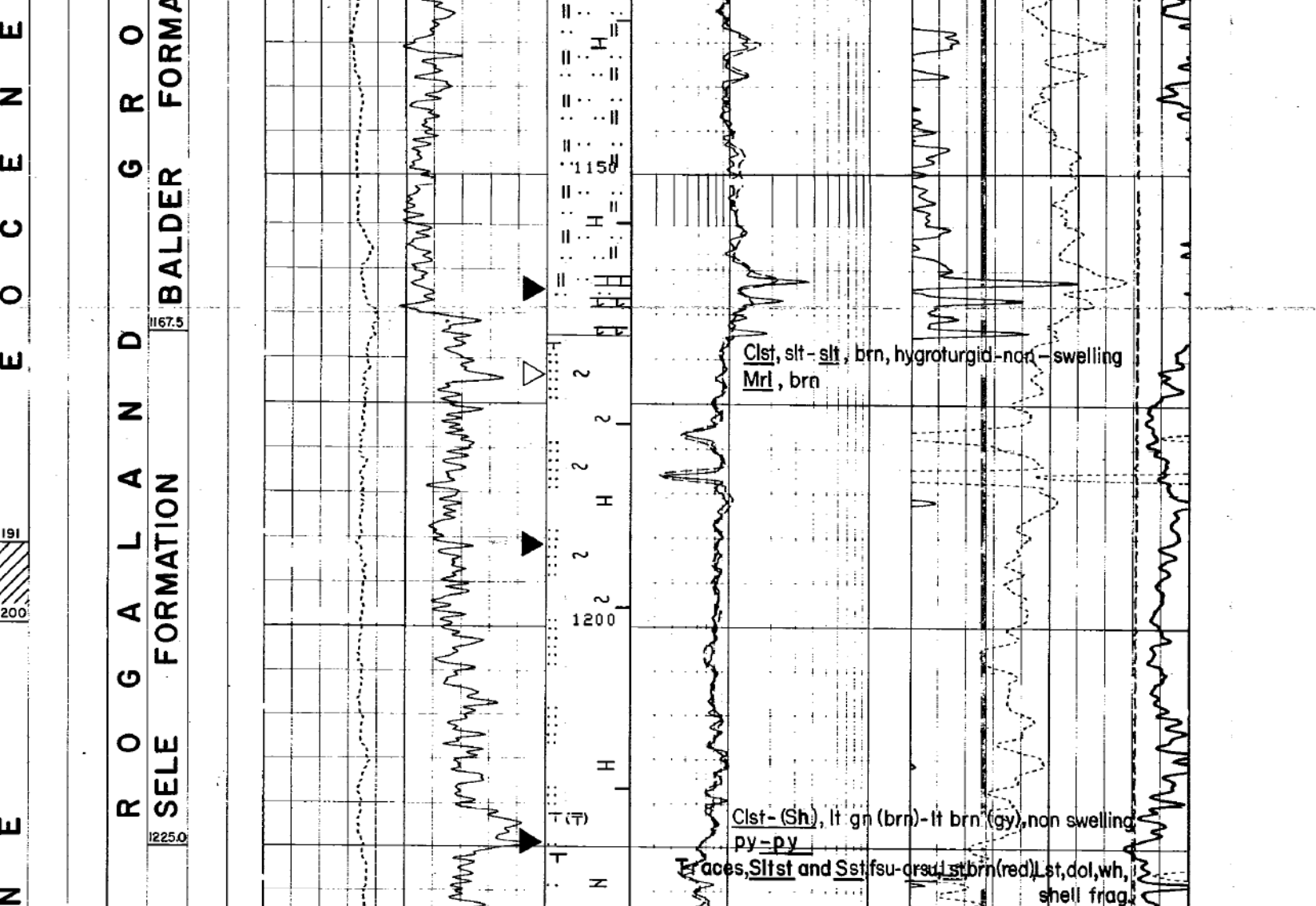
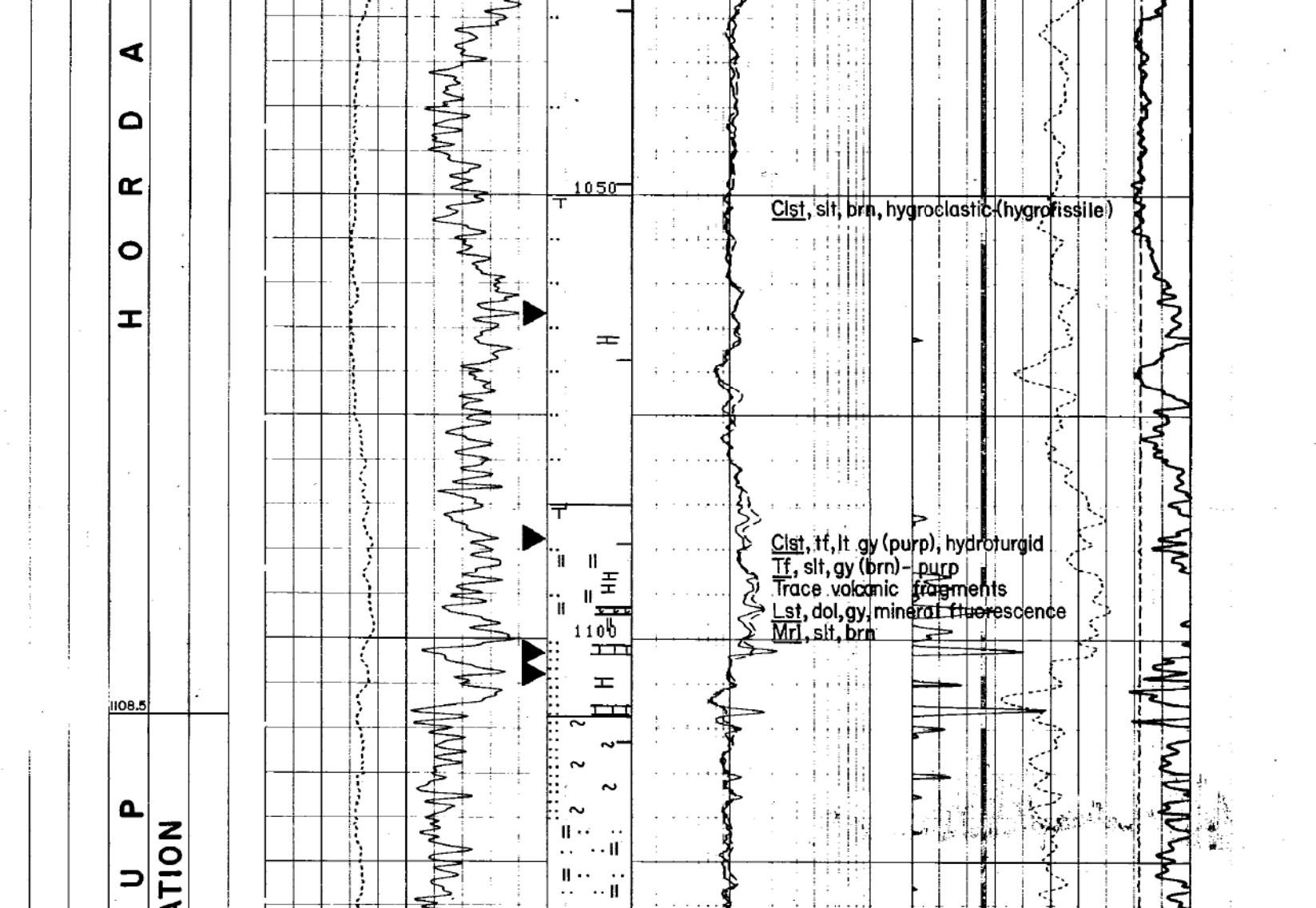
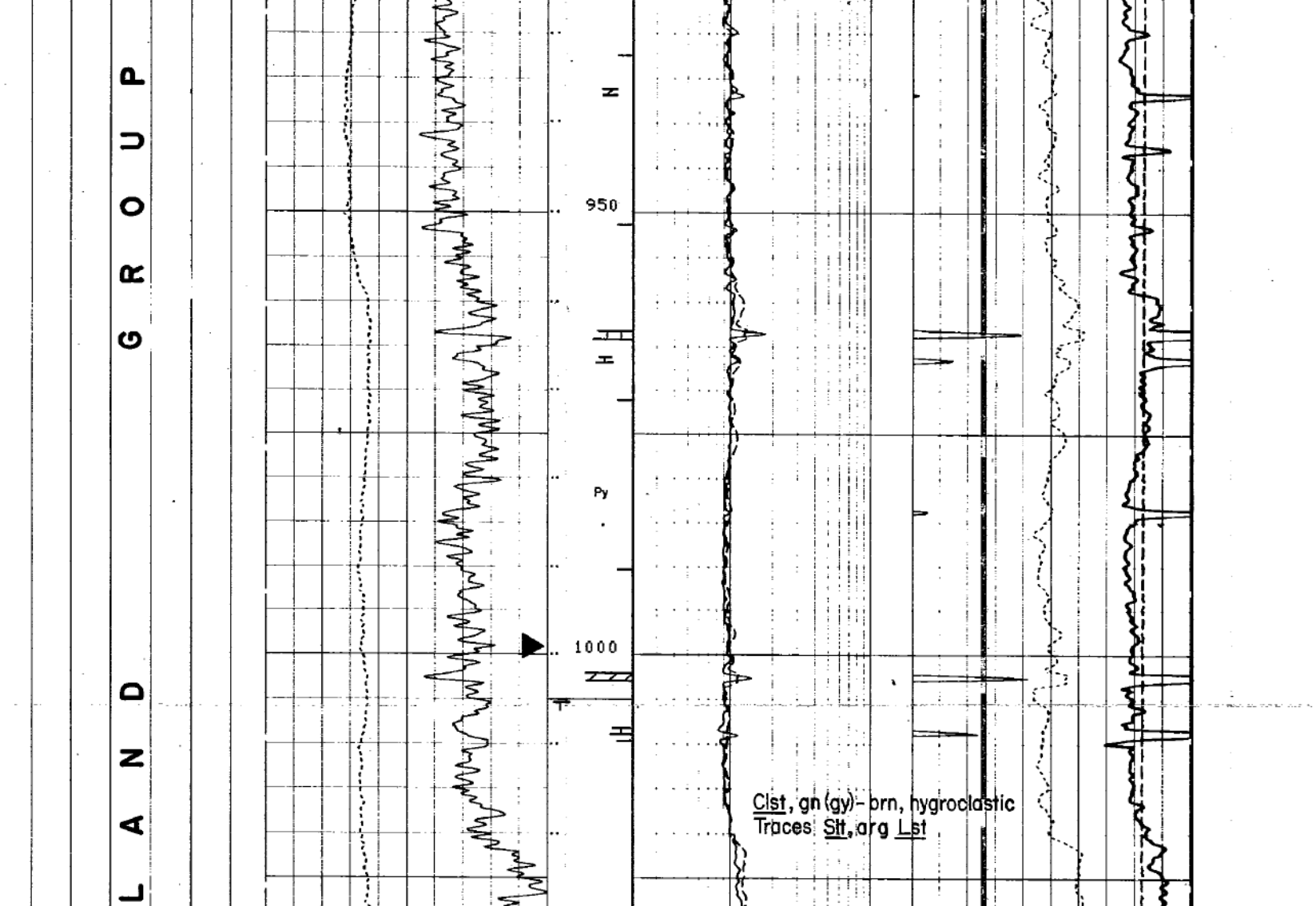
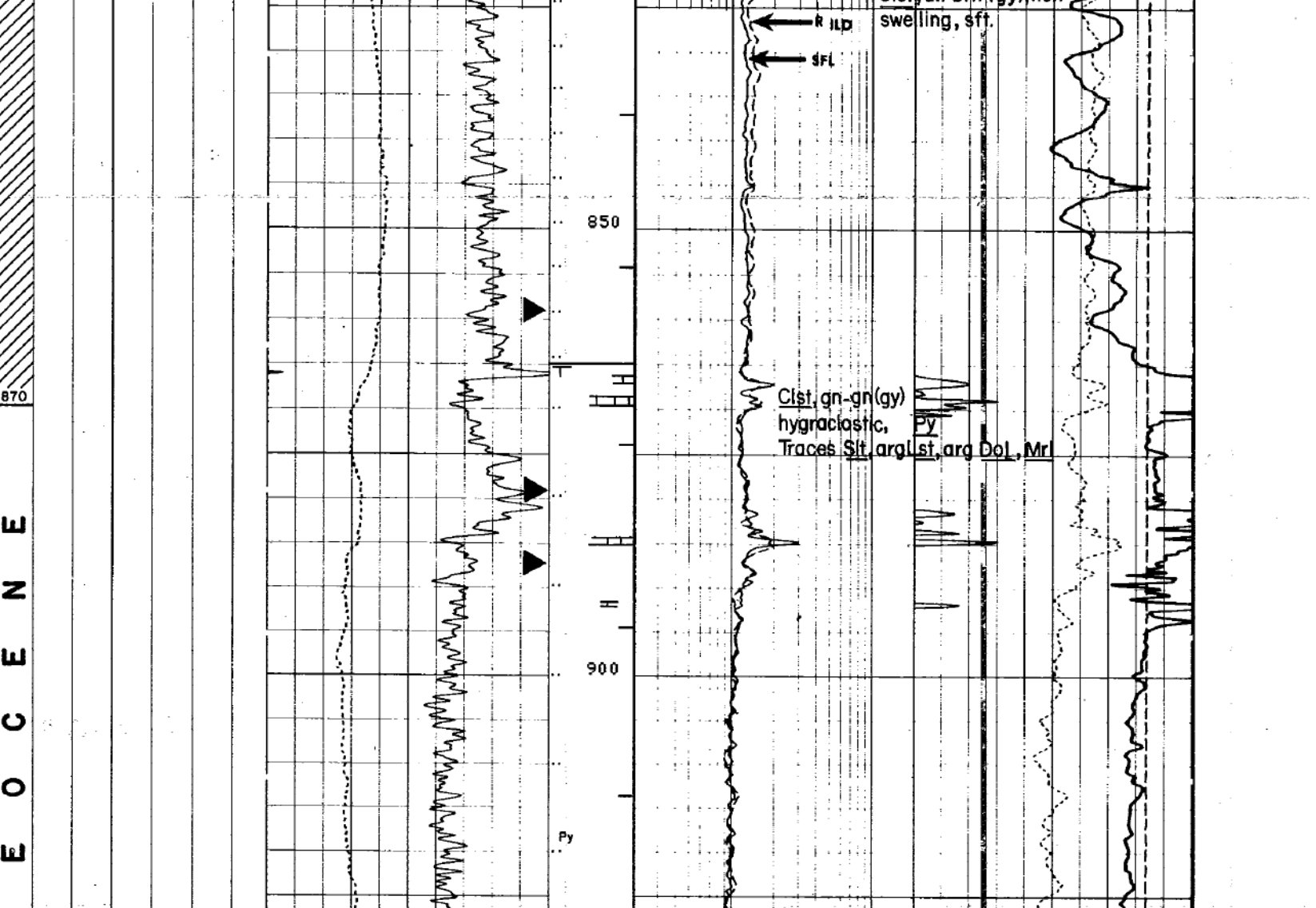
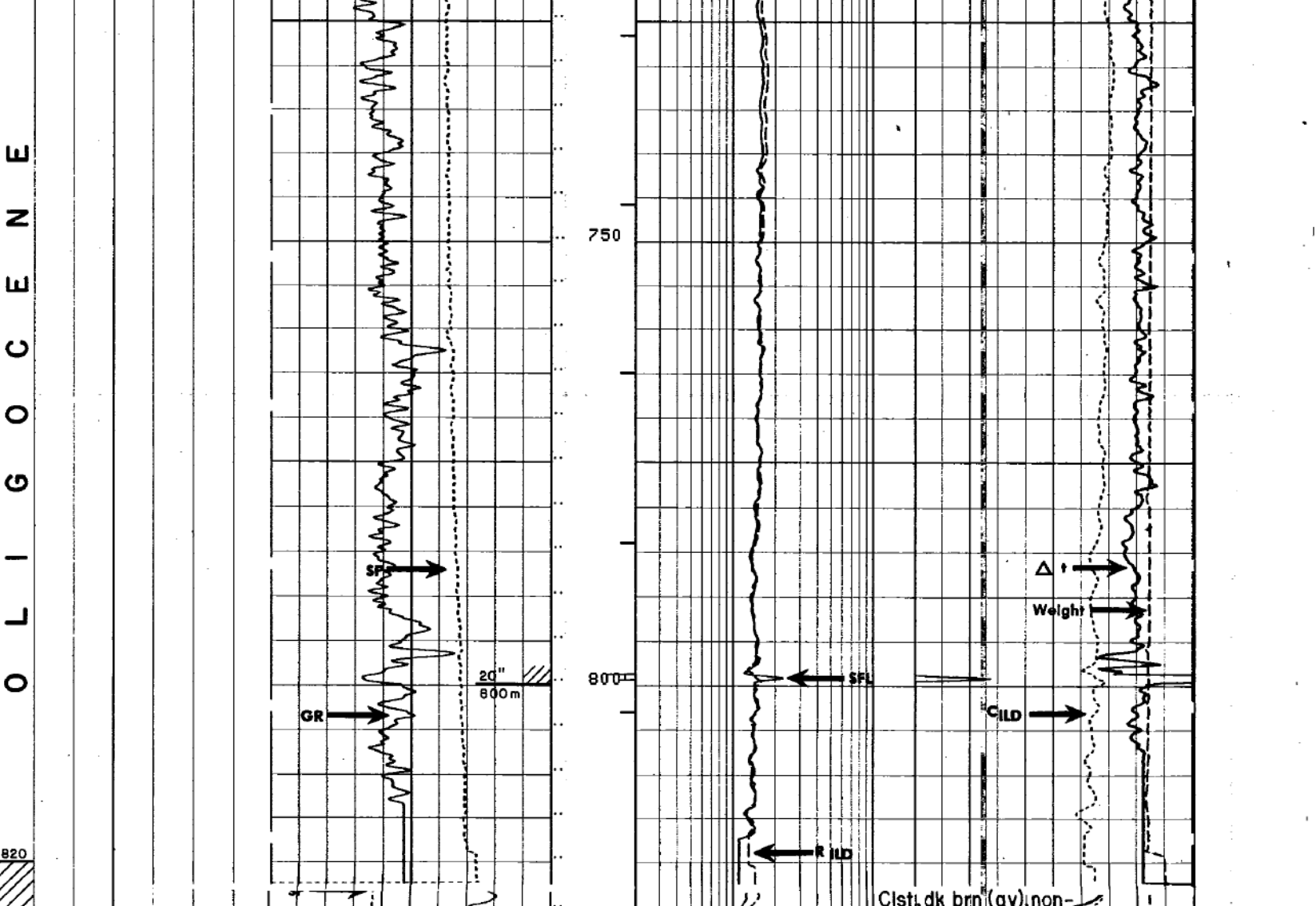
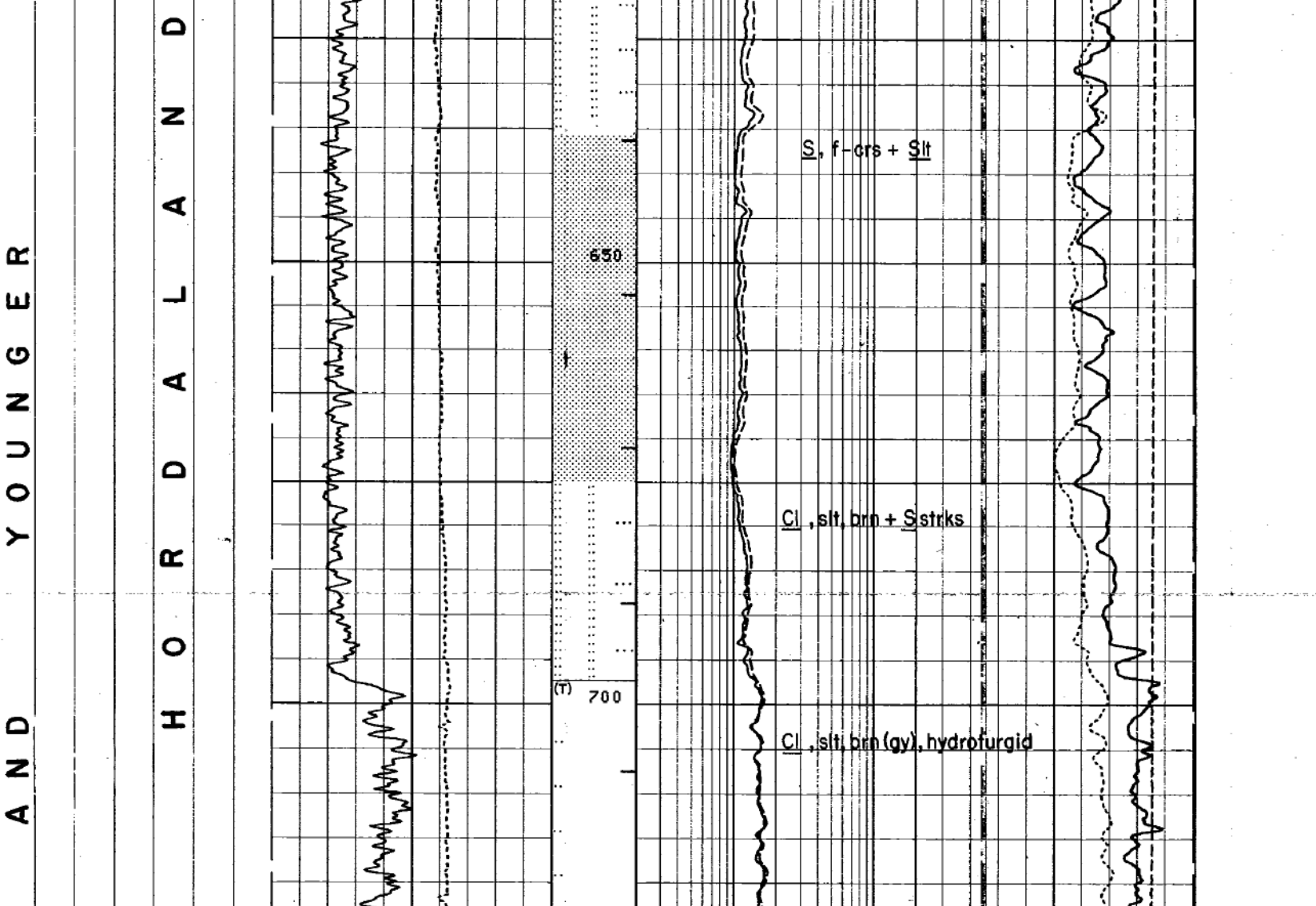
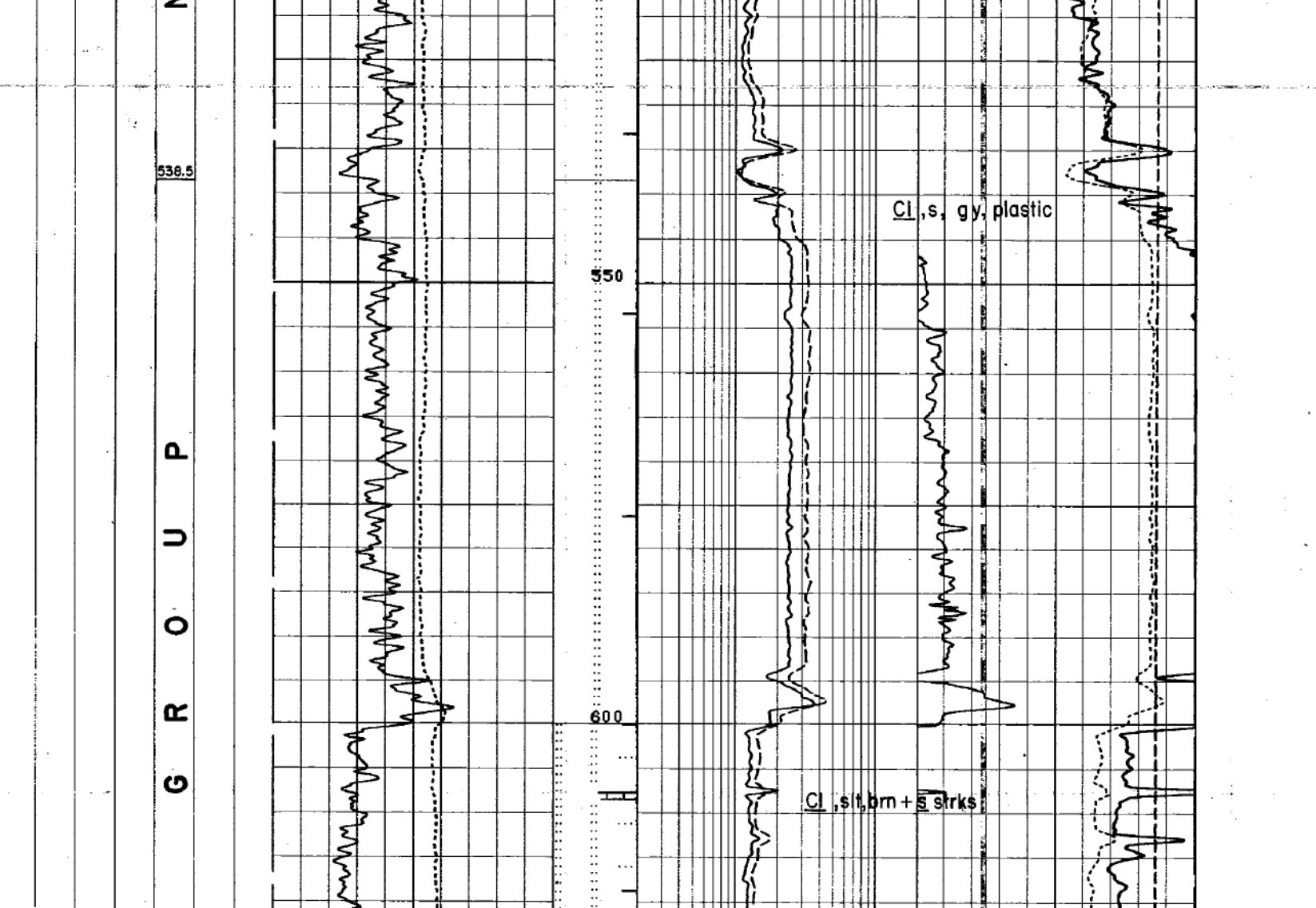
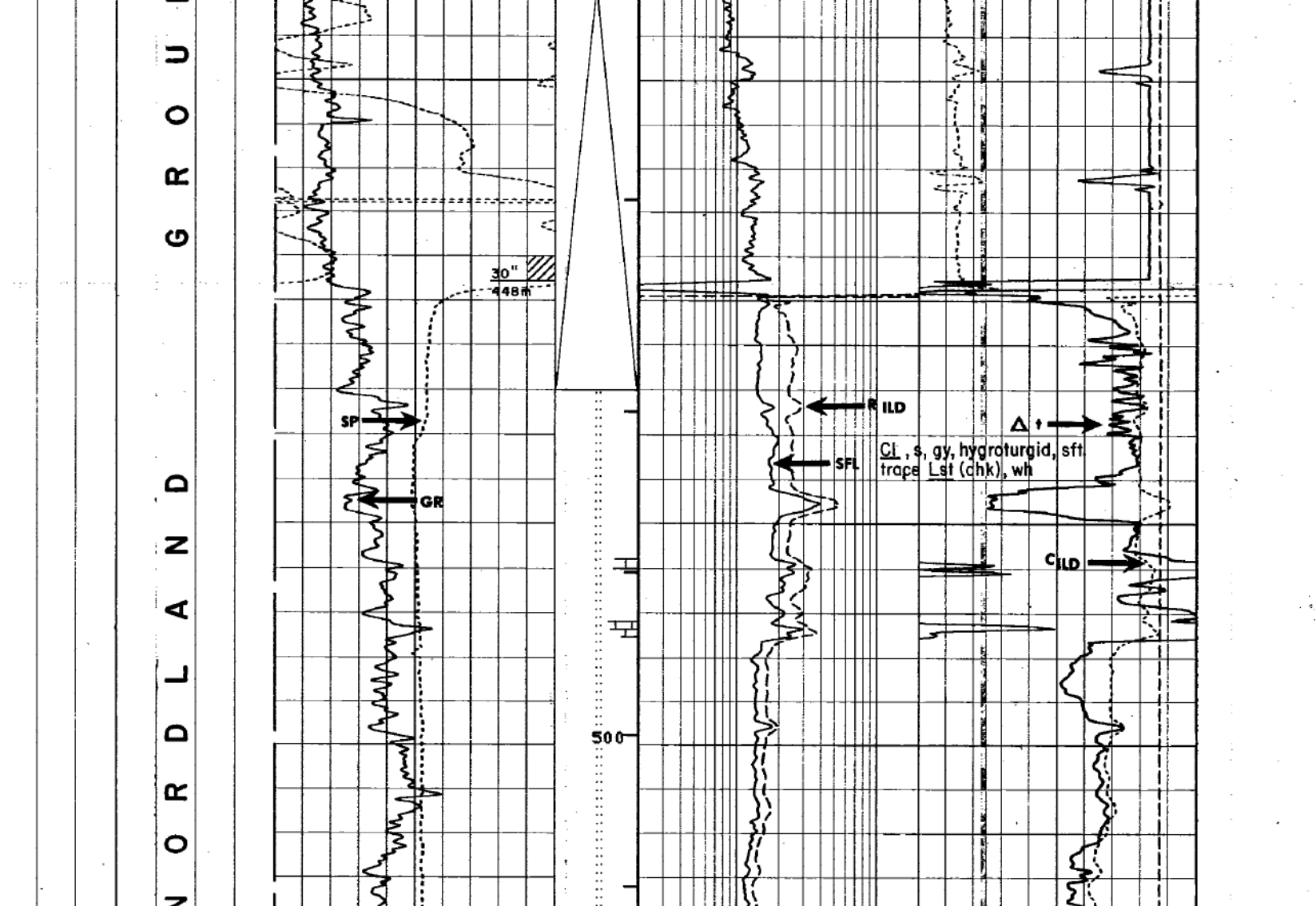
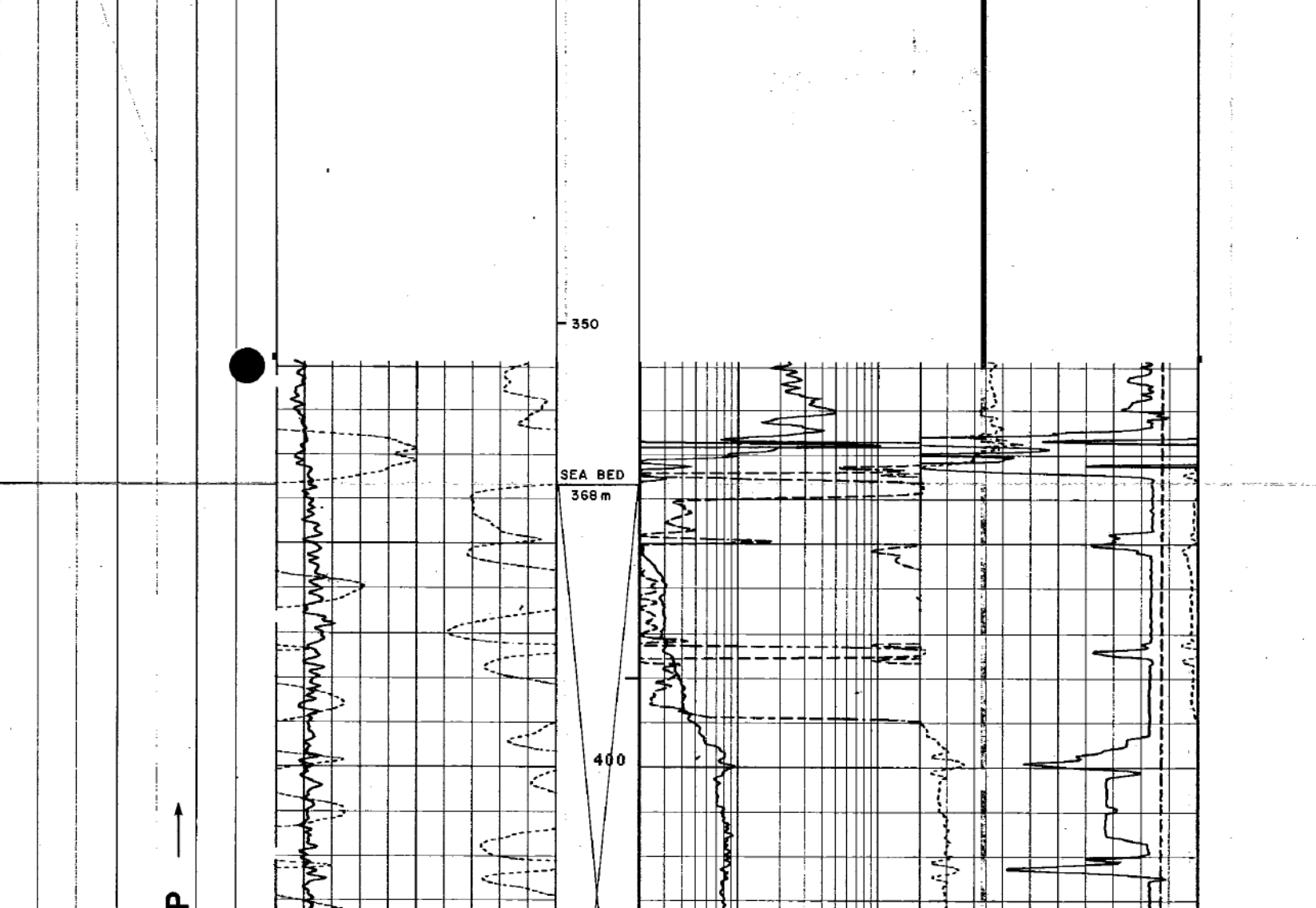
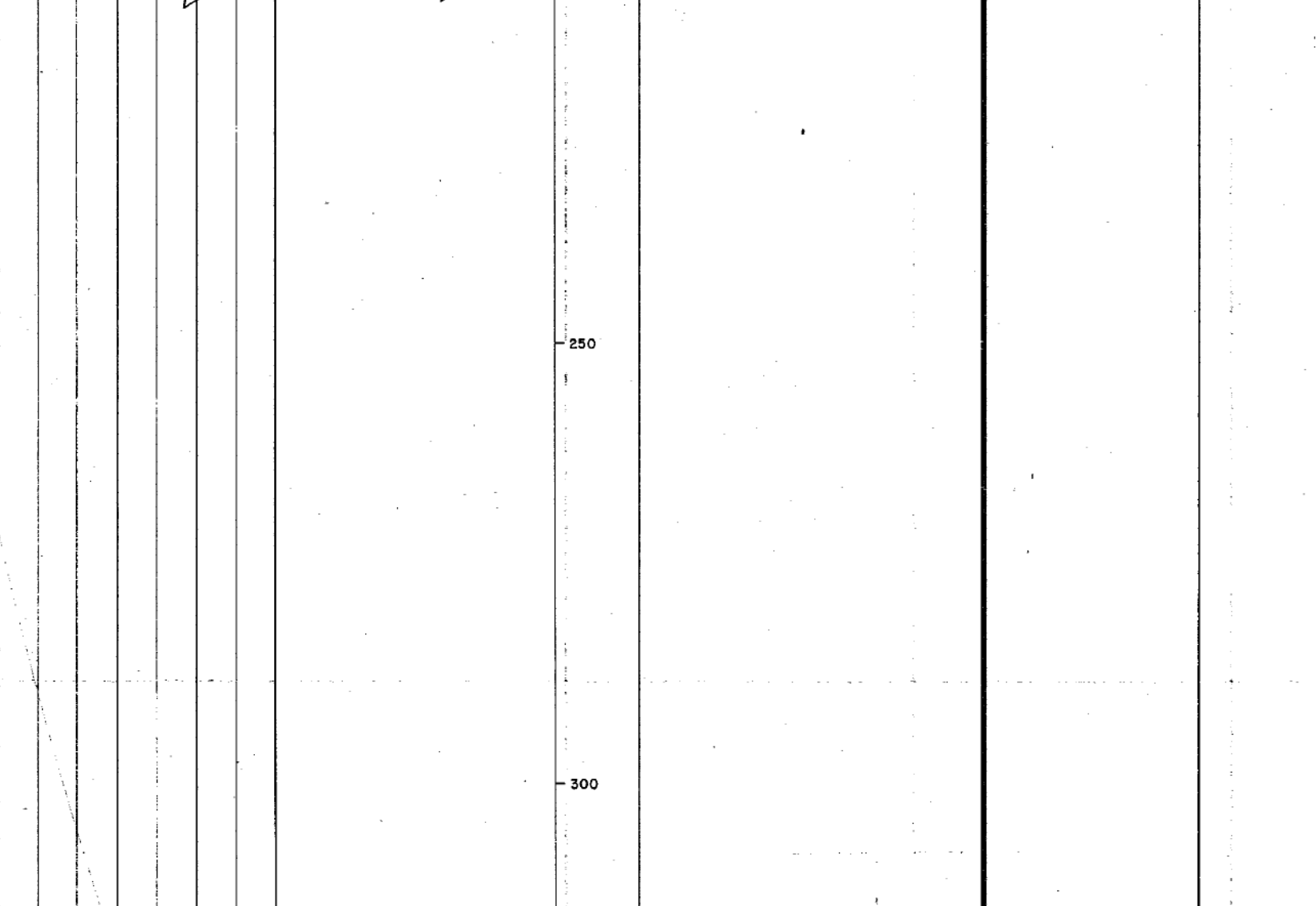


PL 054  
 FIELD TROLL  
 COORDINATES 60°54'13.53" N 03°38'49.53" E  
 SPUD DATE 21.07.81  
 COMPLETION DATE 17.10.81  
 RIG BORGNY DOLPHIN  
 CONTRACTOR DOLPHIN SERVICES A/S  
 K.B. ELEVATION 25m  
 WATER DEPTH 343m  
 T.D. (DRILLER) 1760m  
 T.D. (LOGGER) \_\_\_\_\_  
 T.D. FORMATION MIDDLE JURASSIC FENS FORMATION  
 STATUS P + A GAS AND OIL WELL

MUD LOGGING CONTRACTOR: GEOSERVICES  
 SHELL GEOLOGISTS: T. de NATRIS, K. ABRAHAMSEN  
 CASING RECORD: 30" at 1448m, 20" at 800m, 13 3/8" at 1475m, 9 5/8" at 1752m

LOG NO.	DATE	MEASURED	U.S. (OHMS)	TENS (LB)	HYDRO-CARBON EVALUATION
1000	07/01/81	1000	1000	1000	
1001	07/01/81	1001	1001	1001	
1002	07/01/81	1002	1002	1002	
1003	07/01/81	1003	1003	1003	
1004	07/01/81	1004	1004	1004	
1005	07/01/81	1005	1005	1005	
1006	07/01/81	1006	1006	1006	
1007	07/01/81	1007	1007	1007	
1008	07/01/81	1008	1008	1008	
1009	07/01/81	1009	1009	1009	
1010	07/01/81	1010	1010	1010	
1011	07/01/81	1011	1011	1011	
1012	07/01/81	1012	1012	1012	
1013	07/01/81	1013	1013	1013	
1014	07/01/81	1014	1014	1014	
1015	07/01/81	1015	1015	1015	
1016	07/01/81	1016	1016	1016	
1017	07/01/81	1017	1017	1017	
1018	07/01/81	1018	1018	1018	
1019	07/01/81	1019	1019	1019	
1020	07/01/81	1020	1020	1020	
1021	07/01/81	1021	1021	1021	
1022	07/01/81	1022	1022	1022	
1023	07/01/81	1023	1023	1023	
1024	07/01/81	1024	1024	1024	
1025	07/01/81	1025	1025	1025	
1026	07/01/81	1026	1026	1026	
1027	07/01/81	1027	1027	1027	
1028	07/01/81	1028	1028	1028	
1029	07/01/81	1029	1029	1029	
1030	07/01/81	1030	1030	1030	
1031	07/01/81	1031	1031	1031	
1032	07/01/81	1032	1032	1032	
1033	07/01/81	1033	1033	1033	
1034	07/01/81	1034	1034	1034	
1035	07/01/81	1035	1035	1035	
1036	07/01/81	1036	1036	1036	
1037	07/01/81	1037	1037	1037	
1038	07/01/81	1038	1038	1038	
1039	07/01/81	1039	1039	1039	
1040	07/01/81	1040	1040	1040	
1041	07/01/81	1041	1041	1041	
1042	07/01/81	1042	1042	1042	
1043	07/01/81	1043	1043	1043	
1044	07/01/81	1044	1044	1044	
1045	07/01/81	1045	1045	1045	
1046	07/01/81	1046	1046	1046	
1047	07/01/81	1047	1047	1047	
1048	07/01/81	1048	1048	1048	
1049	07/01/81	1049	1049	1049	
1050	07/01/81	1050	1050	1050	

SYSTEM	TIME STRATIGRAPHY	LITHOLOGICAL STRATIGRAPHY	GAMMA RAY (API UNITS)	RESISTIVITY (OHMS CM)	INTERVAL TRANSIT TIME (MICROSECONDS PER FT.)	HYDRO-CARBON EVALUATION
QUATERNARY	QUATERNARY	QUATERNARY	QUATERNARY	QUATERNARY	QUATERNARY	QUATERNARY
TERTIARY	TERTIARY	TERTIARY	TERTIARY	TERTIARY	TERTIARY	TERTIARY
Eocene	Eocene	Eocene	Eocene	Eocene	Eocene	Eocene
Palaeocene	Palaeocene	Palaeocene	Palaeocene	Palaeocene	Palaeocene	Palaeocene
Jurassic	Jurassic	Jurassic	Jurassic	Jurassic	Jurassic	Jurassic
Callovian	Callovian	Callovian	Callovian	Callovian	Callovian	Callovian



COGS	PERCENTAGE	RECOVERED
1524.6 - 1514.0m	100 %	100 %
1514.0 - 1511.0m	100 %	100 %
1511.0 - 1507.0m	99 %	99 %
1507.0 - 1503.0m	74 %	74 %
1503.0 - 1499.0m	99 %	99 %
1499.0 - 1495.0m	99 %	99 %
1495.0 - 1491.0m	99 %	99 %
1491.0 - 1487.0m	99 %	99 %
1487.0 - 1483.0m	100 %	100 %

TEST (C)	DATE	TIME	DEPTH	RESULTS
1	08/07/81	10:00	1536m	Oil test
2	08/07/81	10:00	1536m	Gas test