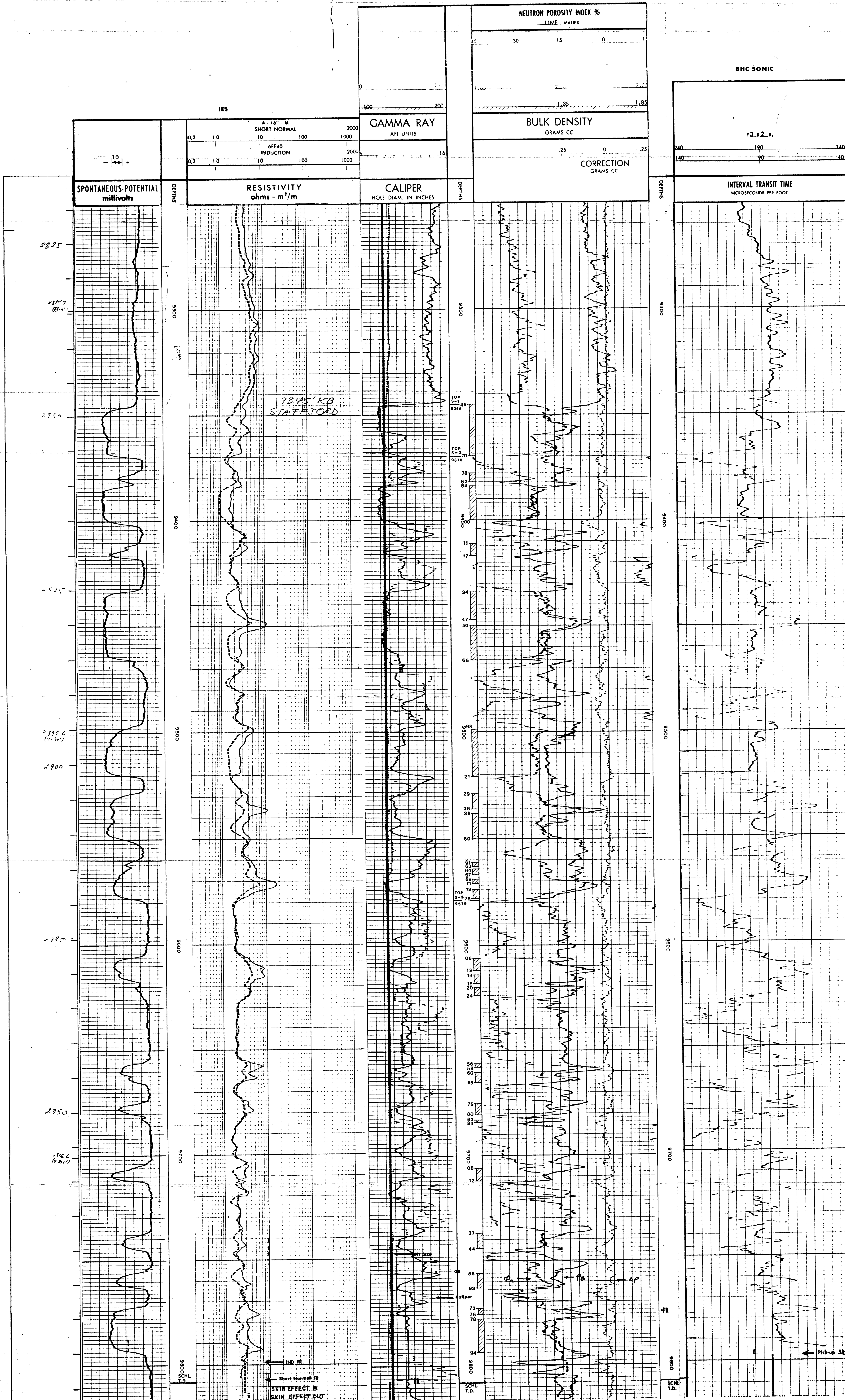


DLL/FDC



SSW/LOG 251-192

MAN/KES 251-192

Mobil Exploration Norway Inc.

**WELL 33/9-3
COMPOSITE LOG SECTION
STATFJORD FORMATION**

(UNIT NET SAND COUNT)

LOG SCALE 1/200 (FEET)

AUTHOR: A.L.C./N.T./K.E.S. DRAWN BY:
DATE: **OCTOBER 1978** MOEX No: 78/316/2831

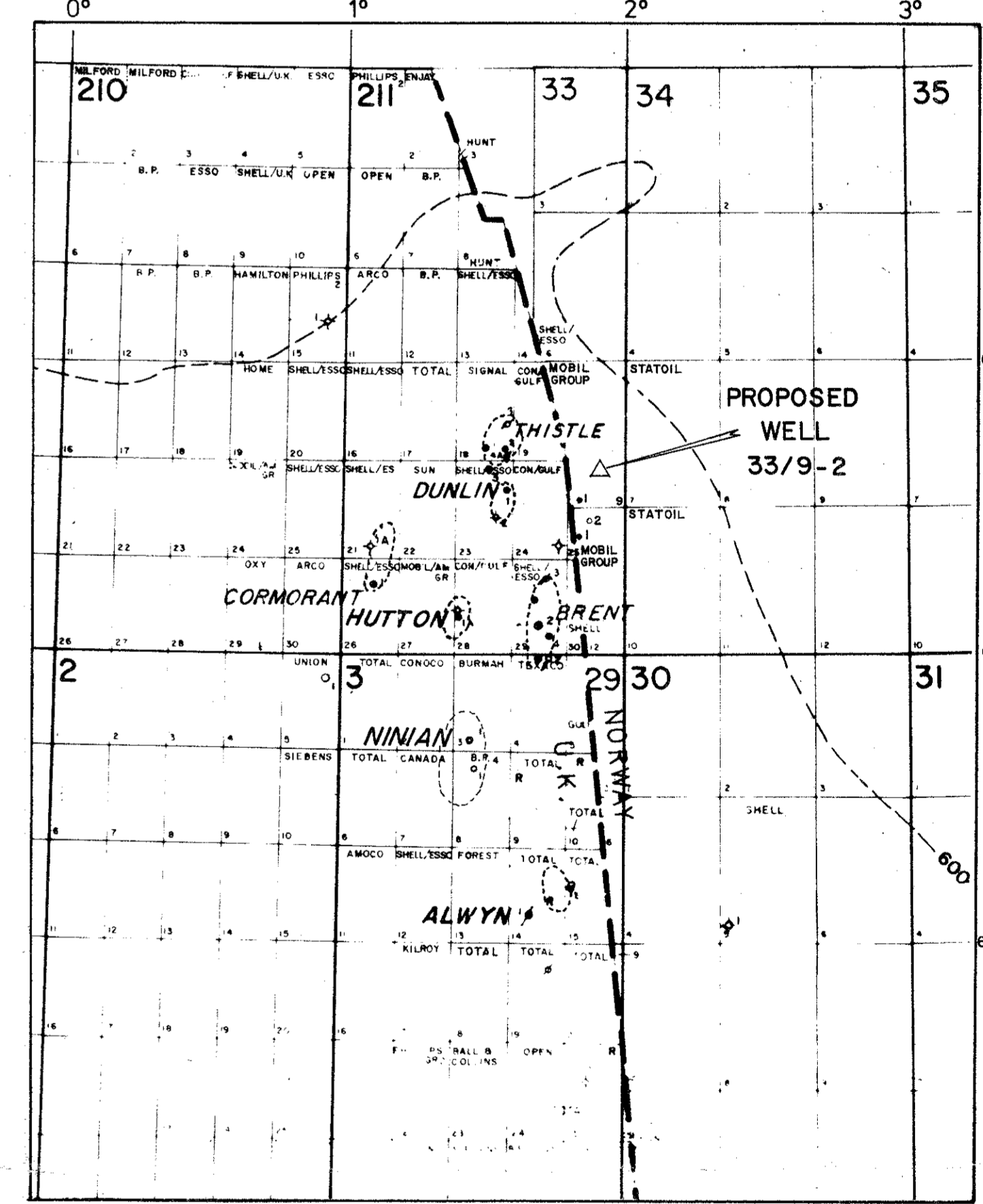
**PROPOSED
33/9-2
GEOLOGIC WELL PROGNOSIS**

S.P. 360, LINE MNG 22
LATITUDE 61°17'47.0"N
LONGITUDE 1°53'56.0"E
WATER DEPTH 471'

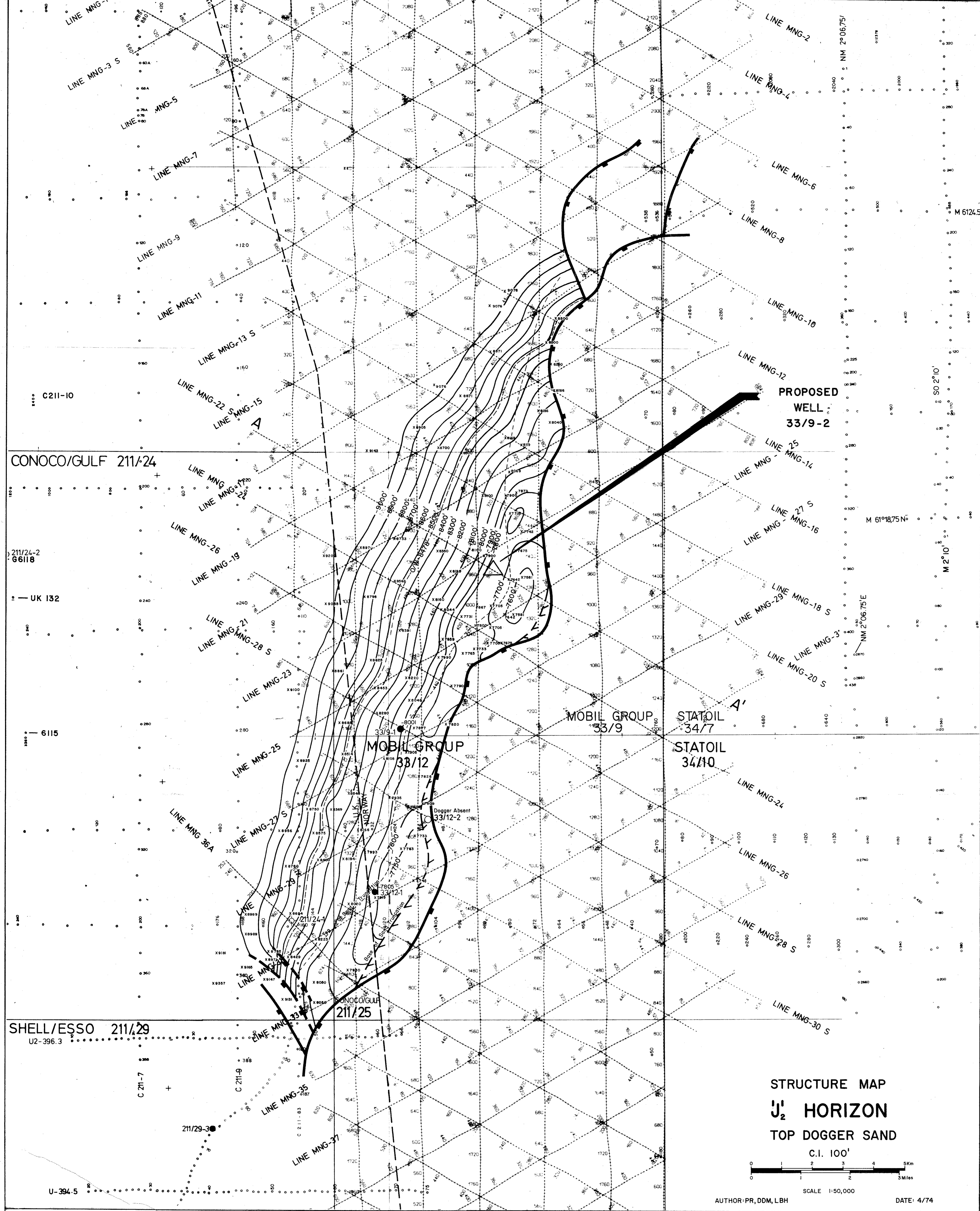
SCALE: 1cm=300feet

AGE	LITHO	DRILL DEPTH	SEISMIC HORIZONS OBJECTIVES	DESCRIPTION
TERTIARY - QUATERNARY		471'		Sea Floor
		1000'		gray soft sticky CLAY, sandy and silty medium-coarse grained SAND
		3000'		fine-medium grained SAND gray MUDSTONE
		4000'		gray fine grained SANDSTONE
PALEO		5400'	C HORIZON	gray, dark gray, green CLAYSTONE minor LIMESTONE
		6100'	D HORIZON	tuftaceous beds gray green CLAYSTONE calcareous, minor LIMESTONE
CRETACEOUS		7000'		gray CLAYSTONE
		7700'	J HORIZON	gray-dark gray calcareous silty CLAYSTONE
JURASSIC	DOGR	8300'	J HORIZON	dark gray black SHALE
	LIAS	8900'	J HORIZON	white coarse-medium grained SANDSTONE
TRIASSIC		9200'	J HORIZON	dark gray CLAYSTONE and SILTSTONE
		10,000'	R HORIZON	SANDSTONE, coarse, medium grained poor sorting, CLAYSTONE red SANDSTONES and CLAYSTONE interbedded to TD?

INDEX MAP

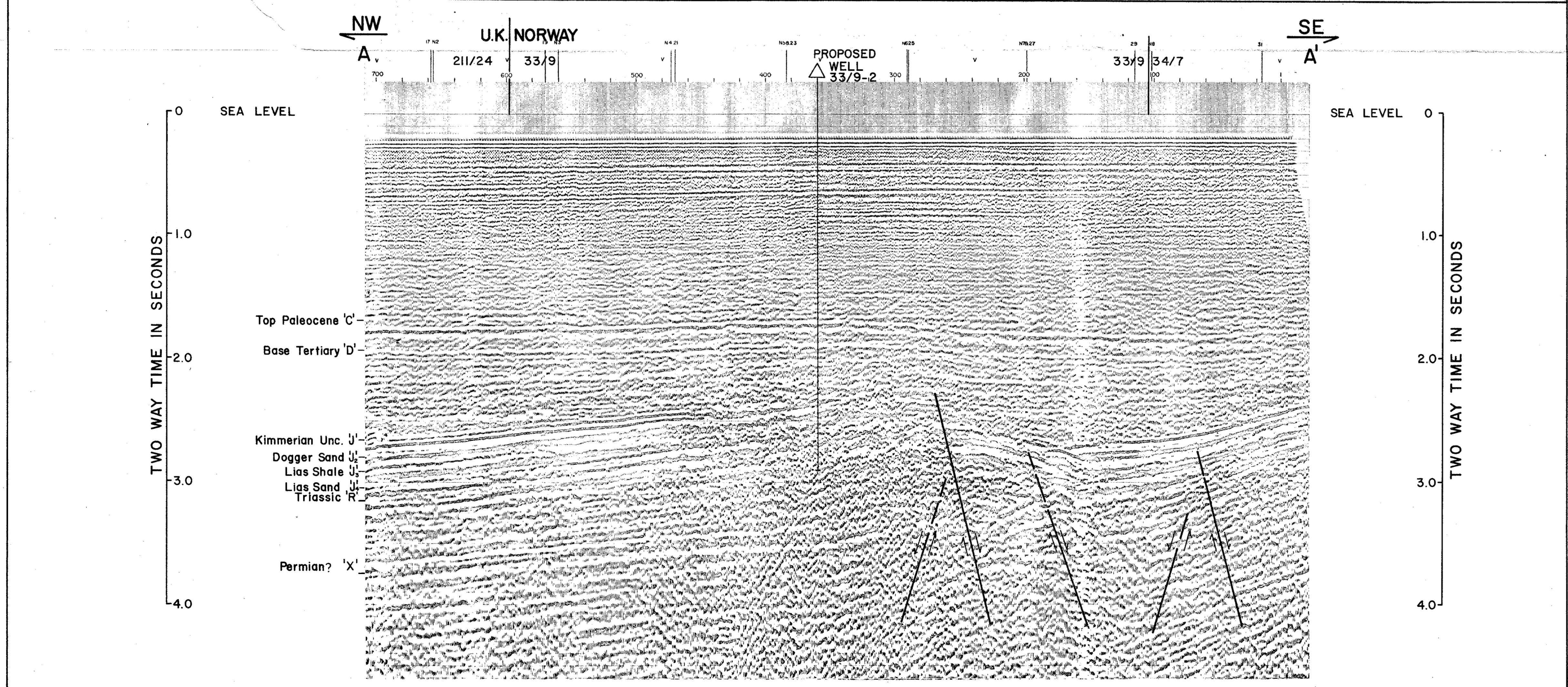


SCALE 1:1,000,000



**STRUCTURE MAP
J₂ HORIZON
TOP DOGGER SAND**

AUTHOR: PR, DDM, LBH DATE: 4/74



**SEISMIC CROSS SECTION
LINE MNG-22**

MOBIL EXPLORATION NORWAY INC

**MONTAGE
WELL
33/9-2**

AUTHOR: DDM, LBH DATE: 7/74
MOEX N 74/0046 SS-JB/15h

MOBIL WELL 33/9-3

<u>Core No.</u>	<u>Depth (ft)</u>	<u>Rec.</u>	<u>Description</u>
1	8441	20 cc	Sd, lse, beige-gy, slt to vy f, ang-sbang, w srted, tr, clr mic, v r pyr, xl por.
2	8438	20 cc	Sd, lse - v pr consol, beige-lt gy, slt to vy f, ang-sb ang, w srted occ vy pr consold w/ vy f dk lam, (res. htdrochn? lignite?) xl por, tr. clr mic.
3	8430	15 cc	Ss, beige - lt gy, slt to vy f, w srted, ang-sb ang, v pr consold, soft, tr clr mic, vf dk lams, xl por.
4	8432	10 cc	Ss, beige - lt gy, slt to vy f, w srted, ang - sub ang, prly consol sort, tr clr mic, vf dk lams, xl por.
5	8381	10 cc	Ss, beige - lt gy, slt to vy f, w srted, ang - sub ang, prly consol, soft, tr clr mic, vf tan to dk br lams, xl por.
6	8371	10 cc	Ss, beige - lt gy, slt to vy f, w srted, ang - sb ang, prly consol, soft, tr clr mic, vy f br-bk lams, xl por.
7	8368	10 cc	Ss, beige - lt gy, slt to vy f, w srted, ang - sb ang, prly consold, soft, tr clr mic, vy f tan to bk lams, x
8	8365	15 cc	Ss, beige - lt gy, slt to vy f, w srted, ang - sb ang, prly consol, lmy matrix, clr mic, vy f tan - bk lams, xl por.
9	8362	10 cc	Ss, beige - lt gy, slt to vy f, w srted, ang - sb ang, prly consol, soft, clr mic, gy cl lams, vy k tan to bk lams, xl por.
11	8358	10 cc	Ss, beige - lt gy, slt to vy f, w srted, ang - sb ang, prly consol, soft, clr mic, bl mica(?), vr r crpxl pr, vy f tan - bk lams, xl por.

MOBIL WELL 33/9-3 (con't)

<u>Core No.</u>	<u>Depth(ft)</u>	<u>Rec.</u>	<u>Description</u>
12	8354	10 cc	Ss, lt bn, slty - f, g srtg, ang - sb ang, p - consol, clr - blk mic. xl por, o stn.
13	8350	10 cc	Ss, lt bn, slty - vy f, w srtd, ang - sb ang, p consol, clr - blk, mic, xl por, o stn.
14	8348	10 cc	Ss, lt bn, slty - f, g srtg, ang - sb ang, p - consol, cl - blk mic, xl por, o stn.
15	8320	20 cc	Ss, lt bn, slty - f, tr med grn, fr srtg, ang - sb ang, p - consol, tr clr mic, xl por, o stn.
16	8317	20 cc	Ss, lt bn, slty - med grn, p srtg, ang - sb ang, p consol, tr clr mic, xl por, o stn.
18	8310	20 cc	Ss, lt bn, slty - crse p srtg, ang - sb ang, p consol, tr clr mic , xl por, o stn.
19	8260	10 cc	Ss, lt bn - bn, slty - crse p srtg, ang - sb ang, f consol, tr clr mica, xl por, o stn.
20	8256	20 cc	Ss, lt bn, slty - vy f w srtd, sb ang - sb rdd, f consol, r - tr clr mic, xl por , tr o stn.
21	8246	20 cc	Ss, lt bn, vy f - f, f srtg, ang - sb ang, p consol, r mic, r ryr, xl por, tr o stn.
22	8158	10 cc	Ss, lt bn, slty - vy f, w srtd, ang - sb ang, fr consol, clr mic, lig, xl por.
23	8156	10 cc	Ss, lt bn, slty - vy f, w srtd, ang - sb ang, f consol, clr mic, abd lig, xl por.

MOBIL WELL 33/9-3 (con't)

<u>Core No.</u>	<u>Depth(ft)</u>	<u>Rec.</u>	<u>Description</u>
24	8142	20 cc	Ss, lt brn, slty - vy f, w srted, ang - sb ang, fr consol, tr clr mic, xl por.
25	8140	10 cc	Ss, lt brn, slty - vy f, w srted, ang - sb ang, fr consol, tr clr mic, tr lig, xl por.
26	8138	20 cc	Ss, lt brn, slty - vy f, w srted, ang - sb ang, fr consol, clr mic, lig, xl por.
27	8051	10 cc	Ss, lt brn - brn, slty - crse, p srted, ang - sb ang, fr consol, clr mic, xl por.
28	8010	20 cc	Ss, lt gy - brn, slty - f, g srtg, ang - sb ang, fr consol, abd clr mic, blk mic. xl por.
29	8006	20 cc	Ss, lt brn, slty - f, g srtg, ang - sb ang, fr consol, clr mic, tr blk mic, xl por.
30	7998	20 cc	Ss, lt brn, slty - f, g srtg, ang - sb ang, f consol, abd clr mic, tr blk mic, xl por.
31	7996	10 cc	Ss, lt brn, slty - crse p srtg, ang - sb ang, p consol, clr mic, xl por.
32	7992	10 cc	Ss, lt brn, lt gy, slty - v crse, v p srtg, ang - sb ang, fr consol, tr clr mic, xl por.
33	7988	10 cc	Ss, lt brn, slty - f, g srtg, ang - sb ang, p consol, tr clr mic - blk mic, xl por.
34	7984	5 cc	Ss, lt brn, slty - f, fr srtg, ang - sb ang, p consol, clr mic, xl por.

MOBIL WELL 33/9-3 (con't)

<u>Core No.</u>	<u>Depth(ft)</u>	<u>Rec.</u>	<u>Description</u>
35	7980	10 cc	Ss, lt brn, slty - v crse, p srtg, ang - sb ang, fr consol, tr clr mic, xl por.
36	7976	10 cc	Ss, lt brn, slty - crse, p srtg, ang - sb ang, fr consol, xl por.
37	7972	10 cc	Ss lt brwn, slty - med, p srtg, ang - sb ang, fr consol, xl por.
38	7968	10 cc	Ss, lt brn, slty - med, p srtg, ang - sb ang, p consol, tr clr mic, xl por.
39	7962	5 cc	s/a/a
40	7937	5 cc	Ss, lt brn, slty - med, p srtg, ang - sb ang, p consol, tr clr mic, xl por.
41	7934	10 cc	Ss, lt brn, slty - f, p srtg, ang - sb ang, p consol, tr clr mic, xl por.
42	7932	5 cc	Ss, lt brn, slty - med, p srtg, ang - sb ang, p consol, xl por.
43	7928	10 cc	Ss, lt brn, slty - f, p srtg, ang - sb ang, p consol, xl por.
44	7924	10 cc	Ss, lt brn, slty - f, p srtg, ang - sb ang, p consol, xl por.
45	7920	10 cc	Ss, lt brn, slty - f, p srtg, ang - sb ang, p consol, pyr specks, xl por.

PROPOSED 33/9-2 GEOLOGIC WELL PROGNOSIS

S.P. 340, LINE MNG 20
LATITUDE 61°19'03.3" N
LONGITUDE 1°54'16.9" E
WATER DEPTH 474'

SCALE: 1cm=300 feet

AGE	LITH	DRILL DEPTH	SEISMIC HORIZONS OBJECTIVES	DESCRIPTION	
TERTIARY - QUATERNARY		474'	Sea Floor		
			1000'		
			2000'		
			3000'		
			4000'		
			5000'		
			5470'	C HORIZON	
		PALEO.	6170'	D HORIZON	
	CRETACEOUS		7830'	J HORIZON	
			7860'	J ₂ HORIZON	
		8530'	J ₃ HORIZON		
		9000'			
		9400'	J ₄ HORIZON		
JURASSIC	DOGGER				
	LIAS				
		9935'	R HORIZON		
TRIASSIC		10,200'	TD		
		11,000'			

PROPOSED 33/9-2 GEOLOGIC WELL PROGNOSIS

S.P. 360, LINE MNG 22
LATITUDE 61° 17' 47.0" N
LONGITUDE 1° 53' 56.0" E
WATER DEPTH 471'

SCALE : 1cm=300 feet

AGE		LITH	DRILL DEPTH	SEISMIC HORIZONS OBJECTIVES	DESCRIPTION	
			471'	Sea Floor		
TERTIARY - QUATERNARY			1000'			
			2000'		gray soft sticky CLAY, sandy and silty medium-coarse grained SAND	
			3000'		fine-medium grained SAND gray MUDSTONE	
			4000'		gray fine grained SANDSTONE	
			5000'		gray, dark gray, green CLAYSTONE minor LIMESTONE	
		PALEO.	5400'	C HORIZON	tuffaceous beds gray green CLAYSTONE calcareous, minor LIMESTONE	
			6100'	D HORIZON	gray CLAYSTONE	
	CRETACEOUS			7000'		gray MARL gray-dark gray calcareous silty CLAYSTONE
				7770' 7790'	J HORIZON J ₂ HORIZON	dark gray black SHALE
			DOGR.	8000'		
		8390'		J ₃ HORIZON	white coarse-medium grained SANDSTONE	
JURASSIC	LIAS		9000'		dark gray CLAYSTONE and SILTSTONE	
		9260'	J ₄ HORIZON			
		9670'	R HORIZON	SANDSTONE, coarse, medium grained poor sorting w/ CLAYSTONE red SANDSTONES and CLAYSTONE interbedded to T.D.?		
TRIASSIC			10,000'			
			10,200'	TD		
			11,000'			