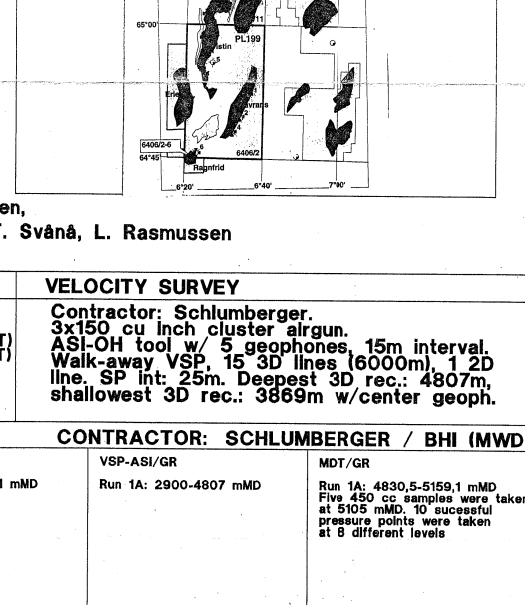


WELL 6406/2-6A COMPOSITE LOG PROSPECT STRUCTURE 1: 500

AREA: Norwegian Sea
LICENCE: NL199
COORDINATES: 64° 45' 31,34" N
06° 22' 54,69" E
WD: 24
WATER DEPTH: 5251 mMD RT / 4842 mTVD RT
FM. AT T.D.: Tofte Fm
SPUD DATE: 17/05/2000
RIG RELEASE: 06/07/2000
WELL STATUS: Permanently P&A
RIG: Transocean Arctic



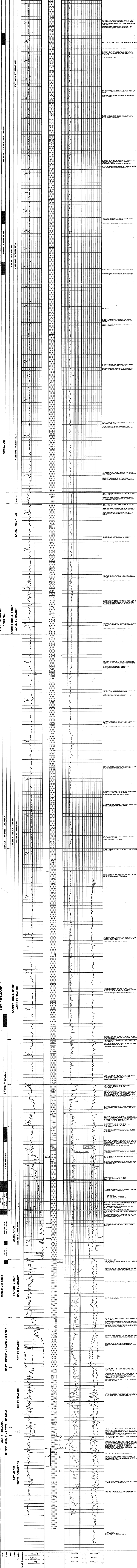
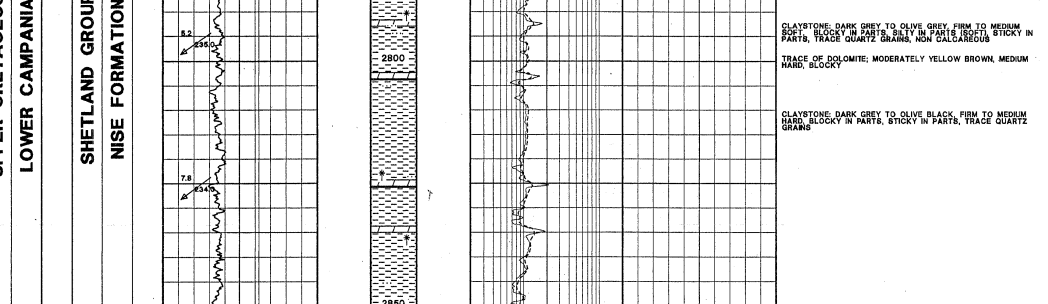
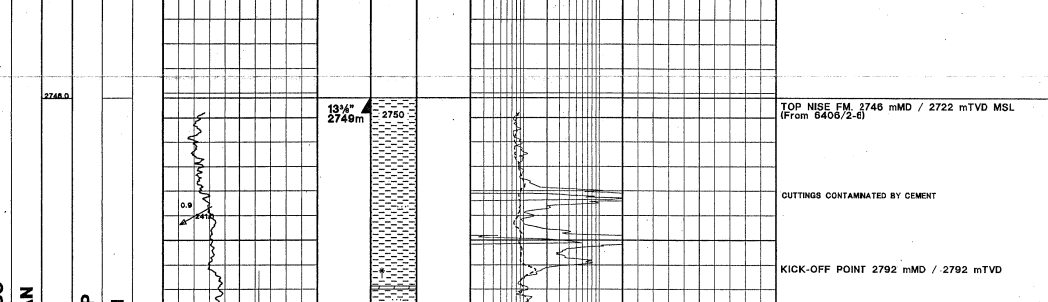
CONTRACTOR: Schlumberger
3x100 cu inch cluster argon.
Walk-away VSP 15 3D lines (6000m) x 1 2D line.
50 ft. 25m. 5 degrees 3D rec. 4807m.
shallowest 3D rec. 3889m w/center geoph.

CASING DATA LOT VELOCITY SURVEY
30" n/a due to re-entrig
13 3/8" 2745m TVD
9 7/8" 4864m TVD
1.94 g/cc (FIT)
2.13 g/cc (FIT)

LOGS RUN CONTRACTOR: SCHLUMBERGER / BHI (MWD)
AIT/OS/GR Run IA: 4864-5251 mMD
MST/GR Run IA: 4864-5251 mMD
VSP-AS/GR Run IA: 2900-4807 mMD
MD/GR Run IA: 4830.5-5155.1 mMD

COMMENTS:
- Well 6406/2-6A was side-tracked from 6406/2-6 just below the 13 3/8" shoe at 2792 m MD (KOP).
- Maximum deviation of the well path was 42.5°.
- The core depths are shifted +0.5 m to match the wireline log.

LITHOLOGICAL SYMBOLS table with icons for COGNEGRATE, SHALE, SAND, LIMESTONE, etc.



Well Log Lithological Descriptions
Chron Strat Litho Strat