

ESSO EXPL. & PROD. NORWAY INC

WELL: 16/7-2

CORE: 1 - 4

DATE: MAY 1982

DATE: MAY 1982

COMPANY: ESSO

CORE: 1

WELL: 16/7-2

STATE: NORWAY

FIELD:

PAGE: 1

 *
 *
 * GEC A.S. LABORATORY *
 * FINAL REPORT *
 *

DEPTH METER	HORIZONTAL PERMEABILITY MILLIDARCY		VERTICAL PERMEABILITY MILLIDARCY		HELIUM PERCENTAGE %	SUMM- ATION PERCENTAGE %	PORE- SATURATION		GRAIN DENS. GR/CC	FORMATION DESCRIPTION
	KA	KL	KA	KL			SC	STM		
2300.00									2.68	SST.GY.F.GR.SU-A.W-CMT.W/MIC.PYR.
2300.03-12	6.5	4.9	2.3	1.6	20.6					
2300.34-39	++		++		++					
2301.40-50	0.92	0.62	0.26	0.16	16.4				2.92	A.A.
2301.50										

+) NC MEASUREMENT POSSIBLE
 ++)) NC PLUG POSSIBLE
 +++)) NO VERTICAL PLUG POSSIBLE
 +++++) NC HORIZONTAL PLUG POSSIBLE

COMPANY: ESSO
 DATE: MAY 1982
 WELL: 16/7-2
 CORE: 2
 FIELD: STATE: NORWAY
 PAGE: 2

 *
 *
 * GECO A.S. LABORATORY
 * FINAL REPORT
 *
 *

DEPTH METER	HORIZONTAL PERMEABILITY MILLIDARCY		VERTICAL PERMEABILITY MILLIDARCY		HELIUM PERCISITY %	SUMM- ATION PORCS. %	PORE- SATURATION		GRAIN DENS. GR/CC	FORMATION DESCRIPTION
	KA	KL	KA	KL			SC	STh.		
2347.00	371.0	341.0	472.0	442.0	26.0	23.6	0.0	41.1	2.65	SST.GY.M-GR.SU.R.FR.SMT.FR.SRT.
2349.30-40	610.0	580.0	259.0	279.0	26.1				2.65	A.A.
2349.60-66	879.0	839.0	197.0	177.0	25.9				2.65	A.A.
2349.90-58	932.0	892.0	336.0	306.0	26.4	22.0	0.0	38.1	2.65	A.A.
2350.20-30	252.0	232.0	476.0	446.0	25.0				2.65	A.A.
2350.50-58	436.0	406.0	265.0	245.0	25.4				2.65	A.A.
2350.80-66	584.0	554.0	400.0	370.0	25.9	24.0	0.0	40.4	2.65	A.A.
2351.10-20	404.0	374.0	276.0	256.0	25.4				2.65	A.A.
2351.41-49	472.0	442.0	359.0	329.0	25.2				2.65	A.A.
2351.70-78	976.0	936.0	929.0	889.0	25.3	23.6	0.0	50.3	2.65	A.A.
2352.00-10	868.0	828.0	866.0	826.0	25.9				2.65	A.A.
2352.30-38	806.0	766.0	814.0	774.0	25.5				2.65	A.A.
2352.60-68	899.0	859.0	874.0	834.0	25.8	25.3	0.0	51.2	2.65	A.A.
2352.90-00	851.0	811.0	812.0	772.0	25.9				2.65	A.A.
2353.28-35	795.0	755.0	748.0	708.0	25.9				2.65	A.A.
2353.50-58	793.0	753.0	701.0	661.0	25.5	21.4	0.0	49.8	2.65	A.A.
2353.80-90	526.0	496.0	568.0	528.0	25.0				2.65	A.A.
2354.12-20	573.0	533.0	839.0	759.0	26.1				2.65	A.A.
2356.22-30										
2356.50										

E k h
 3
 4

+) NC MEASUREMENT POSSIBLE
 ++) NC PLUG POSSIBLE
 +++) NC VERTICAL PLUG POSSIBLE
 ++++) NC HORIZONTAL PLUG POSSIBLE

COMPANY: ESSO

DATE: MAY 1962

WELL: 16/7-2

CORE: 3

FIELD:

STATE: NORWAY

PAGE: 4

DEPTH METER	HORIZONTAL PERMEABILITY MILLIDARCY		VERTICAL PERMEABILITY MILLIDARCY		HELIUM POROSITY %	SUM- MATION PORCS. %	PORE- SATURATION		GRAIN DENS. GR/CC	FORMATION DESCRIPTION
	KA	KL	KA	KL			SG	STW.		
2371.00-08	315.0	285.0	143.0	128.0	21.7				2.65	A.A.
2371.30-40	591.0	561.0	551.0	521.0	25.6	8.4	0.0	56.8	2.65	A.A.
2371.60-68	417.0	387.0	268.0	248.0	25.5				2.65	A.A. F-GR.
2371.92-00	433.0	403.0	386.0	356.0	26.1				2.65	A.A.
2372.20-30	939.0	899.0	707.0	667.0	28.1	12.7	0.0	75.0	2.65	A.A.
2372.50-58	644.0	614.0	667.0	637.0	28.2				2.65	A.A.
2372.79-87	959.0	919.0	612.0	582.0	29.1	11.9	0.0	56.3	2.65	A.A.
2373.16-25	914.0	874.0	839.0	799.0	28.8				2.65	A.A.
2373.50-60	826.0	786.0	657.0	627.0	28.1				2.65	A.A.
2373.73-81	699.0	669.0	705.0	665.0	28.0	15.3	0.0	84.7	2.65	A.A.
2374.00-09	668.0	638.0	626.0	596.0	27.1				2.65	A.A.
2374.30-38	622.0	592.0	695.0	665.0	26.9				2.65	A.A.
2374.60-68	471.0	441.0	432.0	402.0	25.6	14.8	0.0	80.4	2.65	A.A.
2374.90-00	195.0	175.0	387.0	357.0	25.5				2.65	A.A.
2376.00										

Heimdal Fm Core 213

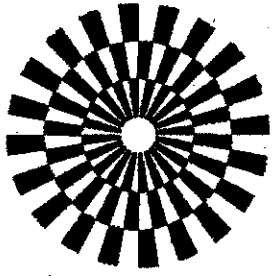
$K_{A_{Hoe}}$ (arithmetic mean) = 622 md
 $K_{A_{Hoe}}$ (arithmetic mean) = 655 md
 $K_{A_{Hoe}}$ (-) = 523
 $K_{A_{Hoe}}$ (geometric mean) = 597 md
 $K_{A_{Hoe}}$ (-) = 477 md

- +) NO MEASUREMENT POSSIBLE
- ++) NO PLUG POSSIBLE
- +++) NO VERTICAL PLUG POSSIBLE
- ++++) NO HORIZONTAL PLUG POSSIBLE

COMPANY: ESSO
 WELL: 16/7-2
 LOCATION:

FIELD:
 COUNTY:
 STATE: NORWAY

FILE: 9303
 DATE: MAY 1982
 ELEV.:



GECO
 GEOPHYSICAL COMPANY
 OF NORWAY A.S

CORE GRAPH

THESE ANALYSES, OPINIONS OR INTERPRETATIONS ARE BASED ON OBSERVATIONS AND MATERIAL SUPPLIED BY THE CLIENT TO WHOM, AND FOR WHOSE EXCLUSIVE AND CONFIDENTIAL USE, THIS REPORT IS MADE. THE INTERPRETATIONS OR OPINIONS EXPRESSED REPRESENT THE BEST JUDGEMENT OF GECO LABORATORIES AND ITS OFFICERS AND EMPLOYEES.

VERTICAL SCALE: 1:200

LABORATORY

CORE-GAMMA SURFACE-LOG
 (PATENT APPLIED FOR)
 GAMMA RAY RADIATION INCREASE ----->
 VOLTAGE: 985 VOLT
 INTEGRATING TIME: 11 SEC
 COUNTS PER MINUTE: 10 K

DEPTH
 METER

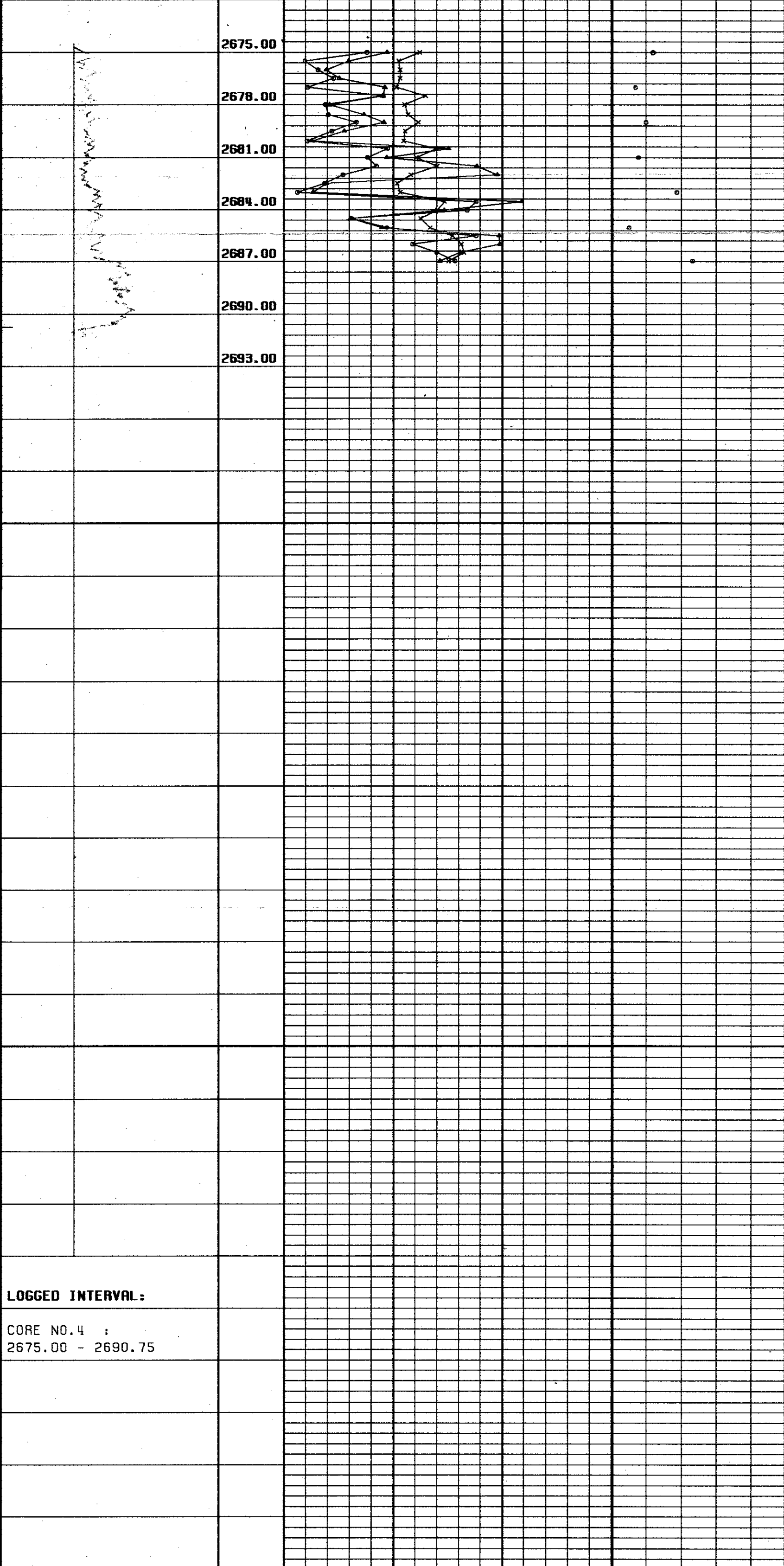
POROSITY & PERMEABILITY
 HORIZONTAL PERMEABILITY (mD)
 VERTICAL PERMEABILITY (mD)

1000mD 100mD 10mD 0

FLUID SATURATION

OTHER OIL WATER
 80 60 40 20 %

CORE NO: 4



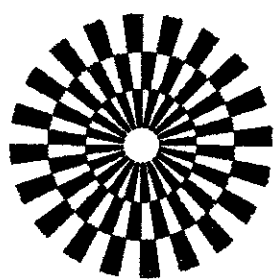
LOGGED INTERVAL:

CORE NO. 4 :
 2675.00 - 2690.75

COMPANY: ESSO
 WELL: 16/7-2
 LOCATION:

FIELD:
 COUNTY:
 STATE: NORWAY

FILE: 9303
 DATE: MAY 1982
 ELEV.:



GECO
 GEOPHYSICAL COMPANY
 OF NORWAY A.S

CORE GRAPH

THESE ANALYSES, OPINIONS OR INTERPRETATIONS ARE BASED ON OBSERVATIONS AND MATERIAL SUPPLIED BY THE CLIENT TO WHOM, AND FOR WHOSE EXCLUSIVE AND CONFIDENTIAL USE, THIS REPORT IS MADE. THE INTERPRETATIONS OR OPINIONS EXPRESSED REPRESENT THE BEST JUDGEMENT OF GECO LABORATORIES AND ITS OFFICERS AND EMPLOYEES.

VERTICAL SCALE: 1:200

LABORATORY

CORE-GAMMA SURFACE-LOG
 (PATENT APPLIED FOR)
 GAMMA RAY
 RADIATION INCREASE ----->
 VOLTAGE: 985 VOLT
 INTEGRATING TIME: 11 SEC
 COUNTS PER MINUTE: 10 K

DEPTH
 METER

POROSITY %
PERMEABILITY mD
 HORIZONTAL
 VERTICAL

FLUID SATURATION

OTHER OIL WATER

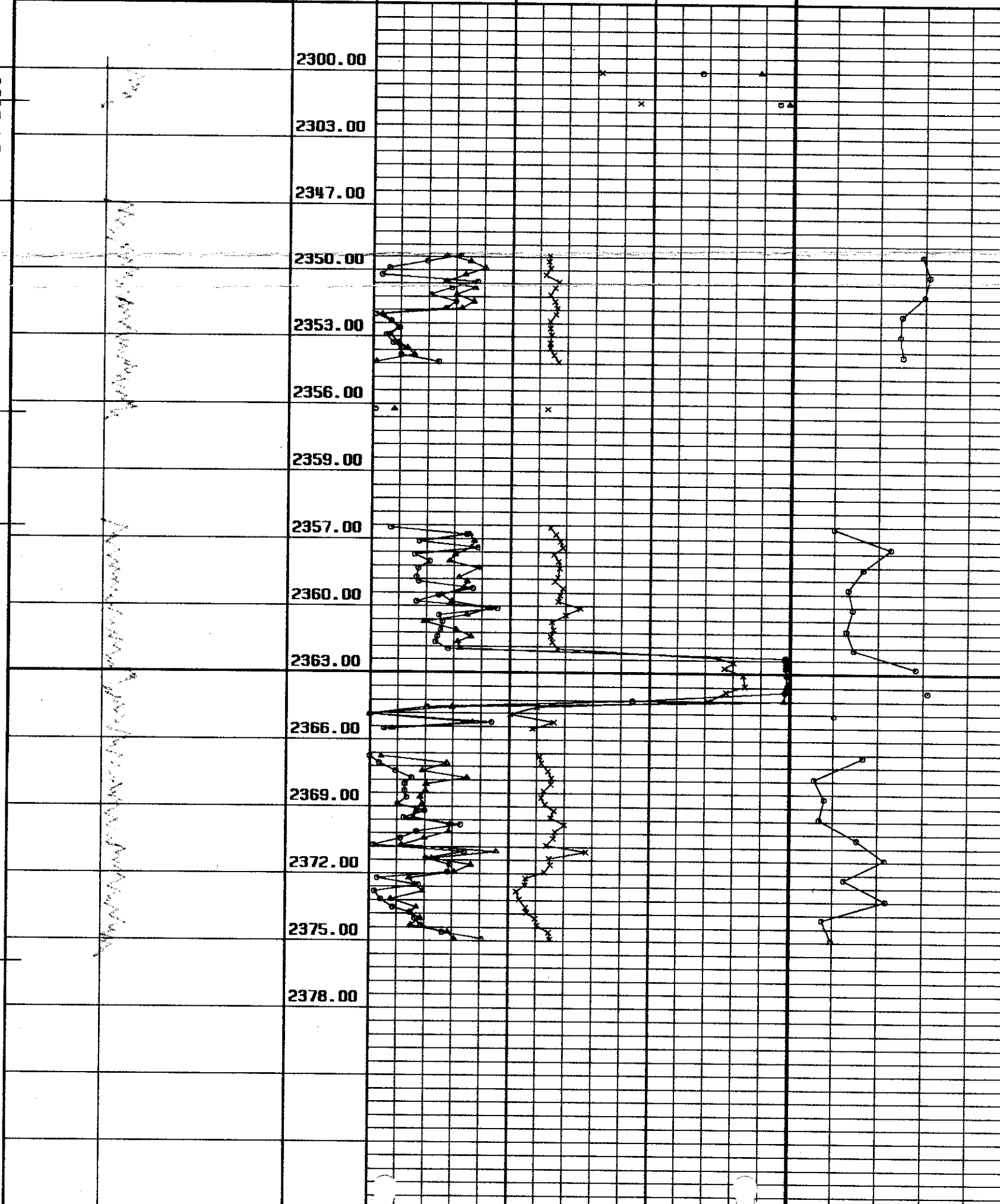
1000mD 100mD 10mD 0

80 60 40 20 %

CORE NO: 1
 CORE NO: 2

CORE NO: 3

2300.00
 2303.00
 2347.00
 2350.00
 2353.00
 2356.00
 2359.00
 2357.00
 2360.00
 2363.00
 2366.00
 2369.00
 2372.00
 2375.00
 2378.00



LOGGED INTERVAL:

CORE NO.1 :
 2300.00 - 2301.50

CORE NO.2 :
 2347.00 - 2356.50

CORE NO.3 :
 2356.50 - 2376.00