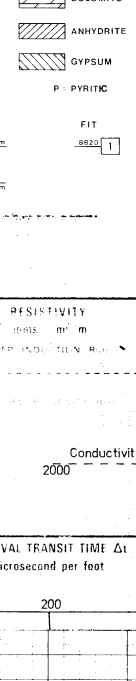


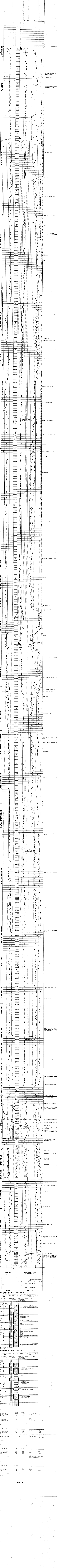
MOBIL EXPLORATION NORWAY INC.
WELL 33/9-6
STATFJORD FIELD
FINAL COMPOSITE LOG

CO-ORDINATES: 01° 25' 12.4" N
 09° 48' 43.9" E
 ELEVATION: KB + 25m
 TOTAL DEPTH: 3356m
 RIG DATE: 29 AUG 1976
 RIG TYPE: ALPHA
 RIG RELEASE: 2 SEPT. 1976
 WELL STATUS: DRY HOLE (WITH OIL SHOWS) P&A



LITHOLOGY SYMBOLS

CONGLOMERATE	SHALE	LIMESTONE	SALT
SANDSTONE	SLATE	DOLOMITE	METAMORPHIC
SILTSTONE	CLAY	ANHYDRITE	PIROCLASTIC
CLAY	CHALK	GIPSUM	INTRUSIVE
M. CALCAREOUS	CL. CALCAREOUS	EVAPORITE	BIOTURBID
M. COARSE	CL. COARSE	S.S.T.	CRACK
M. FINE	CL. FINE	W.C.T.	W.C.T.
M. MEDIUM	CL. MEDIUM	W.C.T.	W.C.T.



MOBIL EXPLORATION NORWAY INC. GRAPHIC CORE LOG

Depth (m)	Pressure (psi)	Temperature (°C)	Gas (cc)	Oil (cc)	Water (cc)	Resistivity (ohm-cm)
2997	688	60.0	0.0	0.0	0.0	100
2998	688	60.0	0.0	0.0	0.0	100
2999	688	60.0	0.0	0.0	0.0	100
3000	688	60.0	0.0	0.0	0.0	100
3001	688	60.0	0.0	0.0	0.0	100
3002	688	60.0	0.0	0.0	0.0	100
3003	688	60.0	0.0	0.0	0.0	100
3004	688	60.0	0.0	0.0	0.0	100
3005	688	60.0	0.0	0.0	0.0	100
3006	688	60.0	0.0	0.0	0.0	100
3007	688	60.0	0.0	0.0	0.0	100
3008	688	60.0	0.0	0.0	0.0	100
3009	688	60.0	0.0	0.0	0.0	100
3010	688	60.0	0.0	0.0	0.0	100
3011	688	60.0	0.0	0.0	0.0	100
3012	688	60.0	0.0	0.0	0.0	100
3013	688	60.0	0.0	0.0	0.0	100
3014	688	60.0	0.0	0.0	0.0	100
3015	688	60.0	0.0	0.0	0.0	100
3016	688	60.0	0.0	0.0	0.0	100
3017	688	60.0	0.0	0.0	0.0	100
3018	688	60.0	0.0	0.0	0.0	100
3019	688	60.0	0.0	0.0	0.0	100
3020	688	60.0	0.0	0.0	0.0	100
3021	688	60.0	0.0	0.0	0.0	100
3022	688	60.0	0.0	0.0	0.0	100
3023	688	60.0	0.0	0.0	0.0	100
3024	688	60.0	0.0	0.0	0.0	100
3025	688	60.0	0.0	0.0	0.0	100
3026	688	60.0	0.0	0.0	0.0	100
3027	688	60.0	0.0	0.0	0.0	100
3028	688	60.0	0.0	0.0	0.0	100
3029	688	60.0	0.0	0.0	0.0	100
3030	688	60.0	0.0	0.0	0.0	100
3031	688	60.0	0.0	0.0	0.0	100
3032	688	60.0	0.0	0.0	0.0	100
3033	688	60.0	0.0	0.0	0.0	100