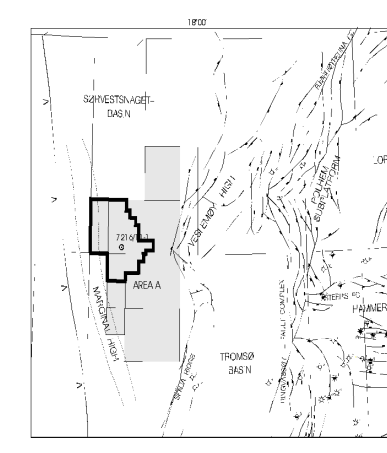


# Composite Log

Scale: 1:500

Well: 7216/11-1 S



**Well Details:**  
Well Name: 7216/11-1 S  
Well Depth: 4233m MD  
Total Depth (Cable): 4233m MD  
Well Status: Plug and abandoned  
Well Classification: Exploration  
Well Coordinates: UTM: 28U 791400 6233000

**Formation at Total Depth:** Lower Turb  
Date Reached TD: 2002-03-09  
Date Completed: 2002-03-14

**Prepared by:** A. Fakhoury, E. Sturissen  
**Well Coordinates:** 62°30'N 01°15'W

Country	North
NORWAY	PL 017

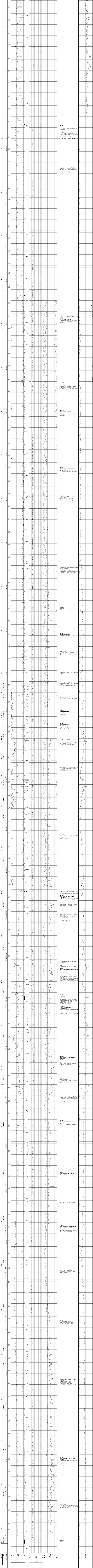
Field	Platform	Turbocore: Arctic
7216/11-1 S	7216/11-1 S	Turbocon Arctic

Drilling Contractor	Logging Company	Geologists
Equinor	EMCO Company	U. Agrehaugen, K. Kalgraf, O. Gierthelmeier, S. Sturissen, C. Carlsson

Core	Core Interval	Core Depth (m)	Core Type	Core Description
1	4233.00 - 4233.00	4233.00	Core	...
2	4232.00 - 4233.00	4232.50	Core	...
3	4231.00 - 4232.00	4231.50	Core	...

Pressure points (MD)	Pressure (bar)	Temperature (°C)
4233.00	10.0	10.0
4232.00	10.0	10.0
4231.00	10.0	10.0

Stratigraphy	Gamma Ray	Resistivity	Neutron/Cover	Lithological Description	Sonic
...	...	...	...	...	...



Core Report	Core Report
...	...