



# NORSK HYDRO WELLSITE LITHOLOG

Scale 1:500

Well  
Field  
Licence

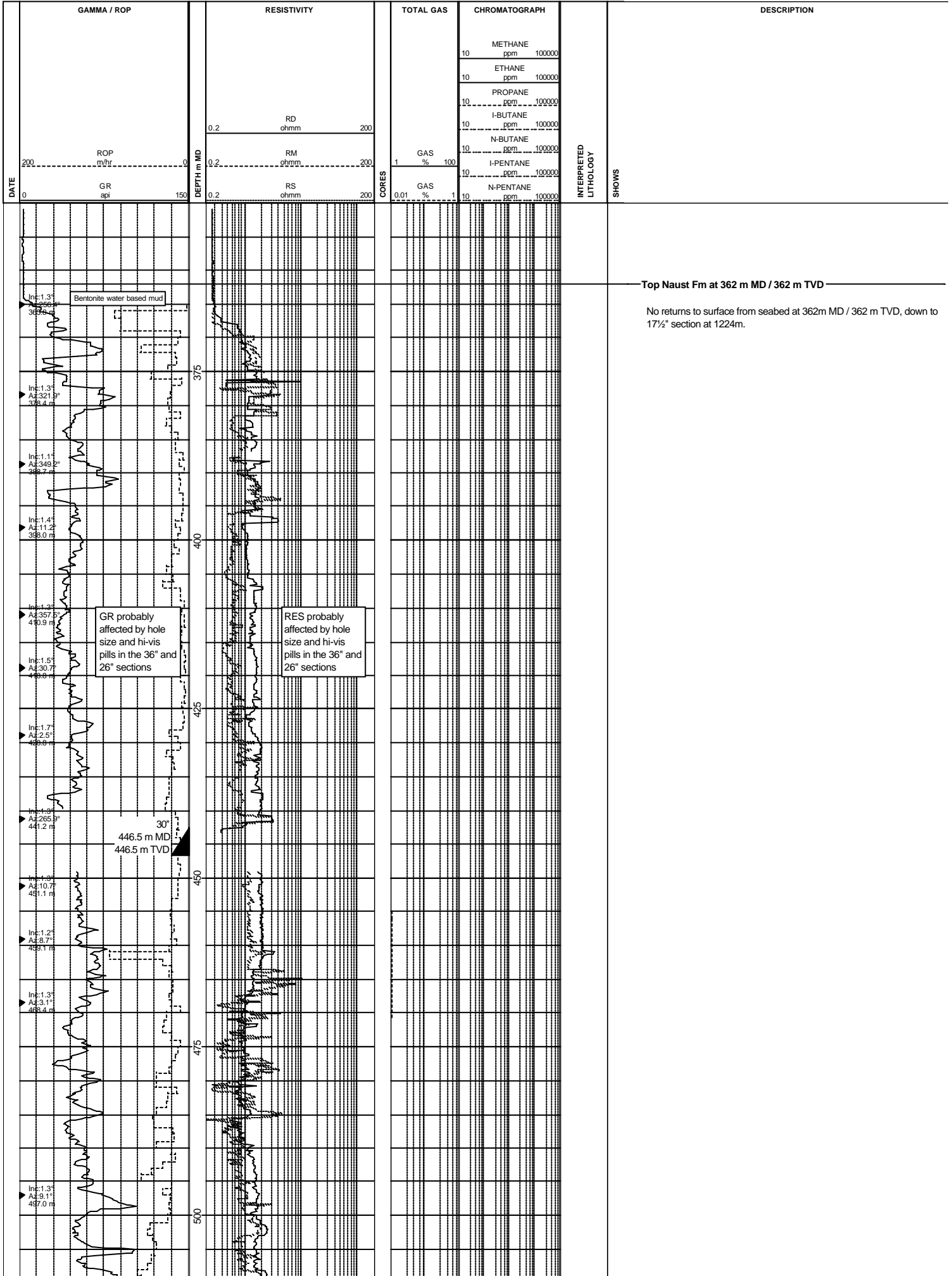
64077-6  
Njord  
PL 107

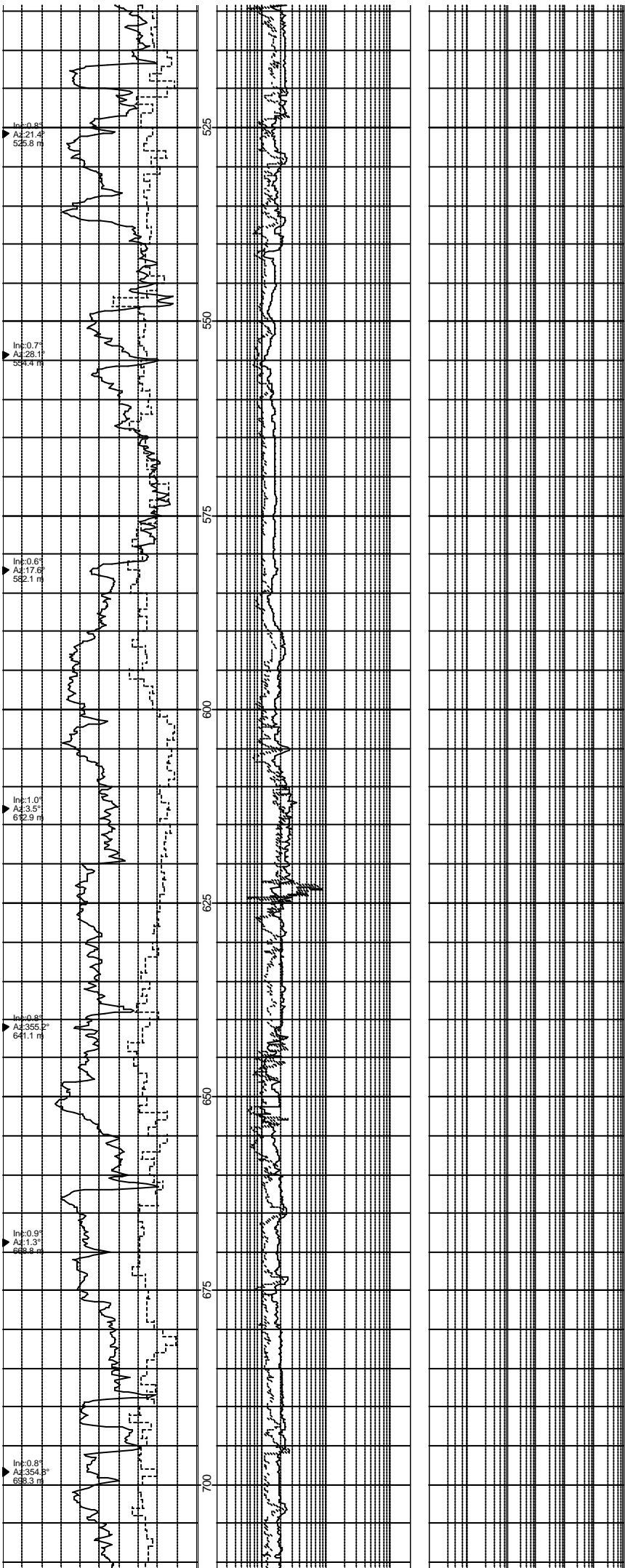
Platform  
RKB-MSL  
Water depth

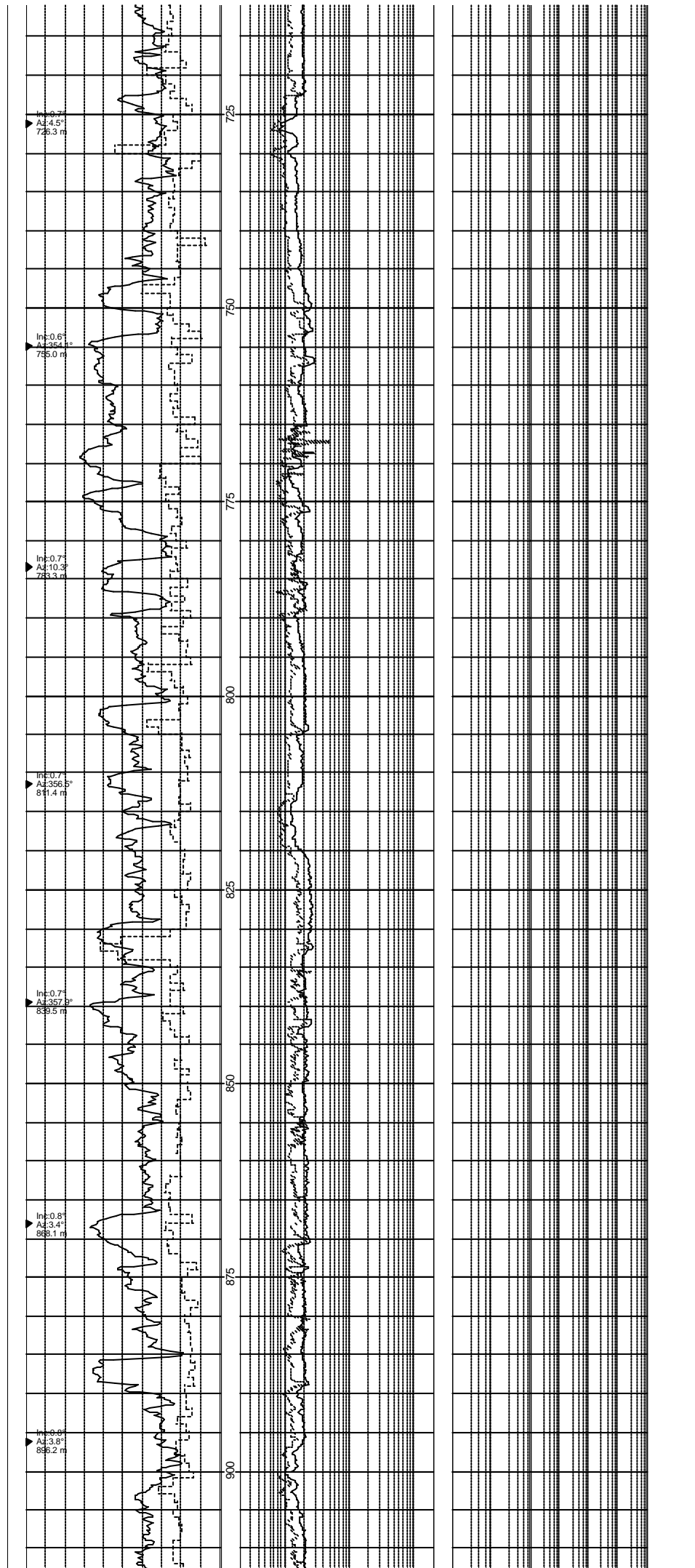
Scarabeo 6  
26m  
336m

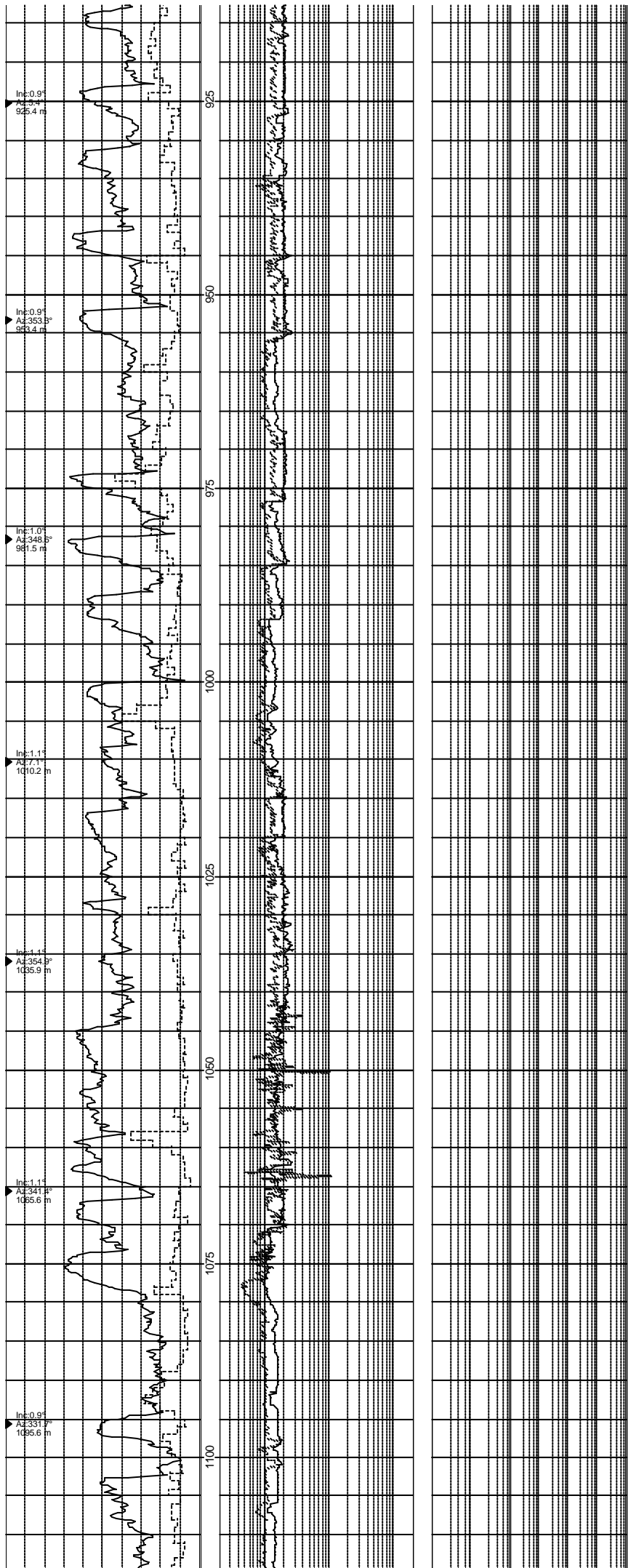
Geologists

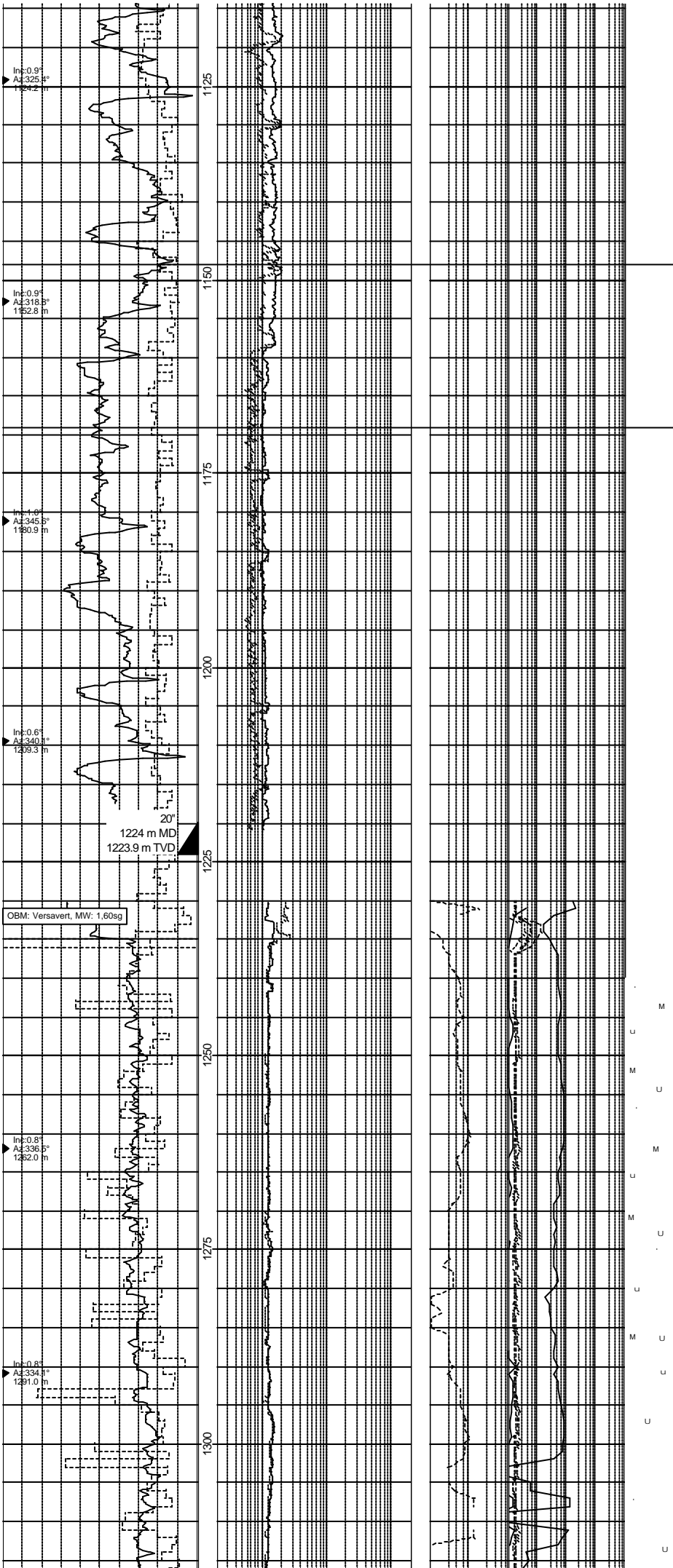
M.Eien, K.Kalgraff,  
E.Skottlien, A.Halvorsen









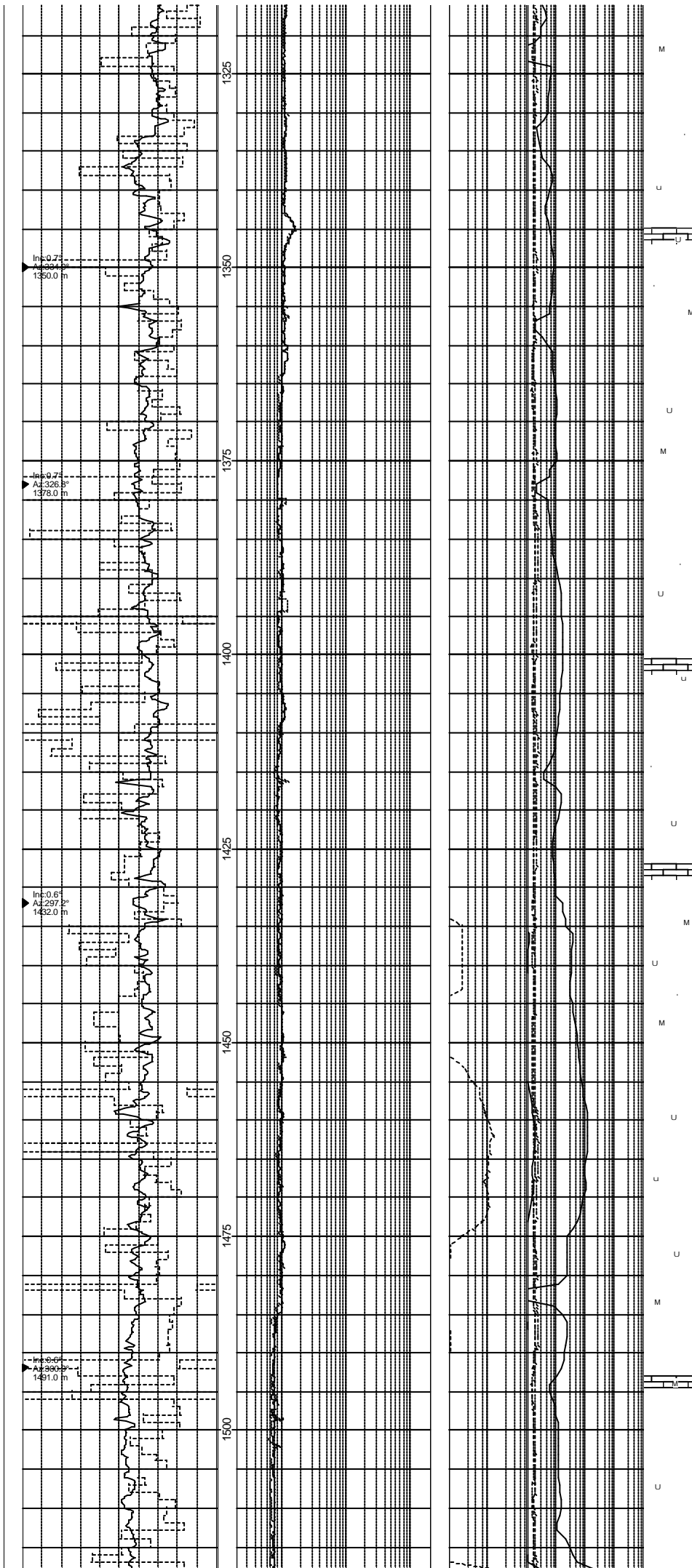


Top Kai Fm at 1148 m MD / 1147.9 m TVD

Top Brygge Fm at 1169 m MD / 1168.9 m TVD

Clst med dk gry - olv gry, blk, occ sbfis, occ sty, Tr Micromic, Tr Micropyr, r Glau

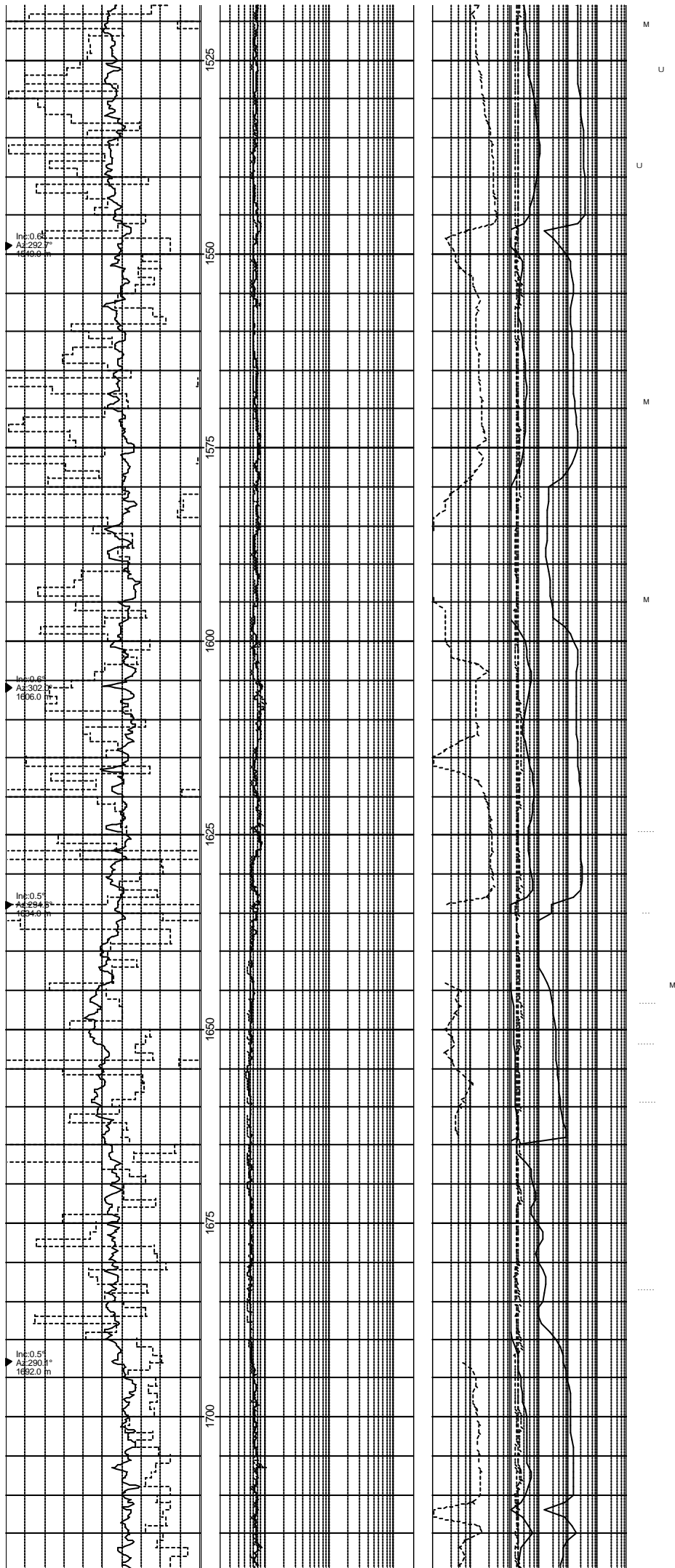
Clst olv blk - olv gry - brnsh blk, frm, blk, occ sbfis, non - silty calc, Tr Micromic, Tr Micropyr, r Glau



Ls: lt olv gry - med lt gry, frm - mod hd, blk, microIn, arg lam,

Ls: lt olv gry - med lt gry, frm - mod hd, blk, microIn, arg lam,

Cls: grnsh blk - olv blk, frm, blk, non calc, I.P. sily - vf sdy, r  
Micromic, r Micropyr.



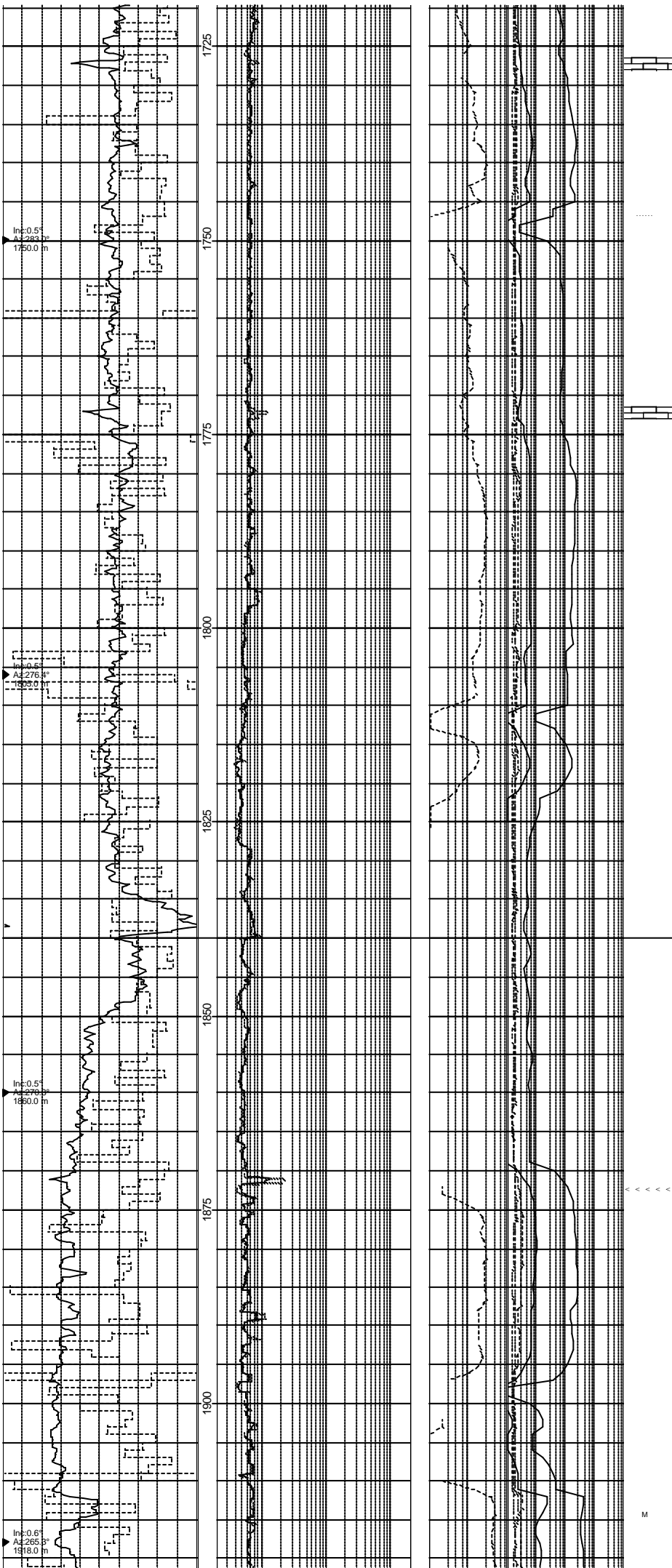
Cist: olv gry, frm, blk, non calc, slily slty, gd Tr Micromic, Tr Micropyr, r Glau, r carb mat

Cist: olv gry, frm, blk, non calc, slily slty, occ slily calc, Tr Micromic, Tr Micropyr, r Glau, r carb mat

Ls: lt olv gry - med lt gry, frm - mod hd, blk, microxl, dol

Sst: v lt gry-yel gry, slty-v f,w md, w srt, sft-frm, occ hd, calc-dol cmt, no vis por

Sst: clr-wh, clr trns qtz, f-med, pred med, w md, w srt, sft-frm, slily calc cmt, no vis por



**Cst:** olv gry-med bl gry, blk, frm, non calc, slily slty, Tr Micromic, v f carb frag

**Ls:** wh- lt brn gry-pl yel org, sft-frm, occ dol, pred arg, occ microxln

**Sst:** clr trnsl, f-med, pred med, sbang-ang, hd, v wl sil cmt, occ slily dol cmt, pred lse gms, no vis por

**Cst:** olv gry-olv blk, med bl gry- bl gry, blk, frm, non-occ slily calc, occ slty, Tr Micromic, Tr Glauc, occ v f carb frag

**Cst:** varicol, mod rd brn-gry rd, olv gry-olv blk, med bl gry- bl gry, blk, sft-frm, pred frm, non calc-calc, occ slily sdy, occ slily slty, Tr Micromic, Tr Glauc, occ v f carb frag

**Top Tare Fm at 1840 m MD / 1839,9 m TVD**

**Ls:** wh- lt brn gry-pl yel org, sft-frm, occ dol, pred arg, occ microxln

**Sst:** clr trnsl, v f-f, sbrnrd-mdd, w srt, hd, occ sil cmt, occ slily dol cmt, pred lse gms, no vis por

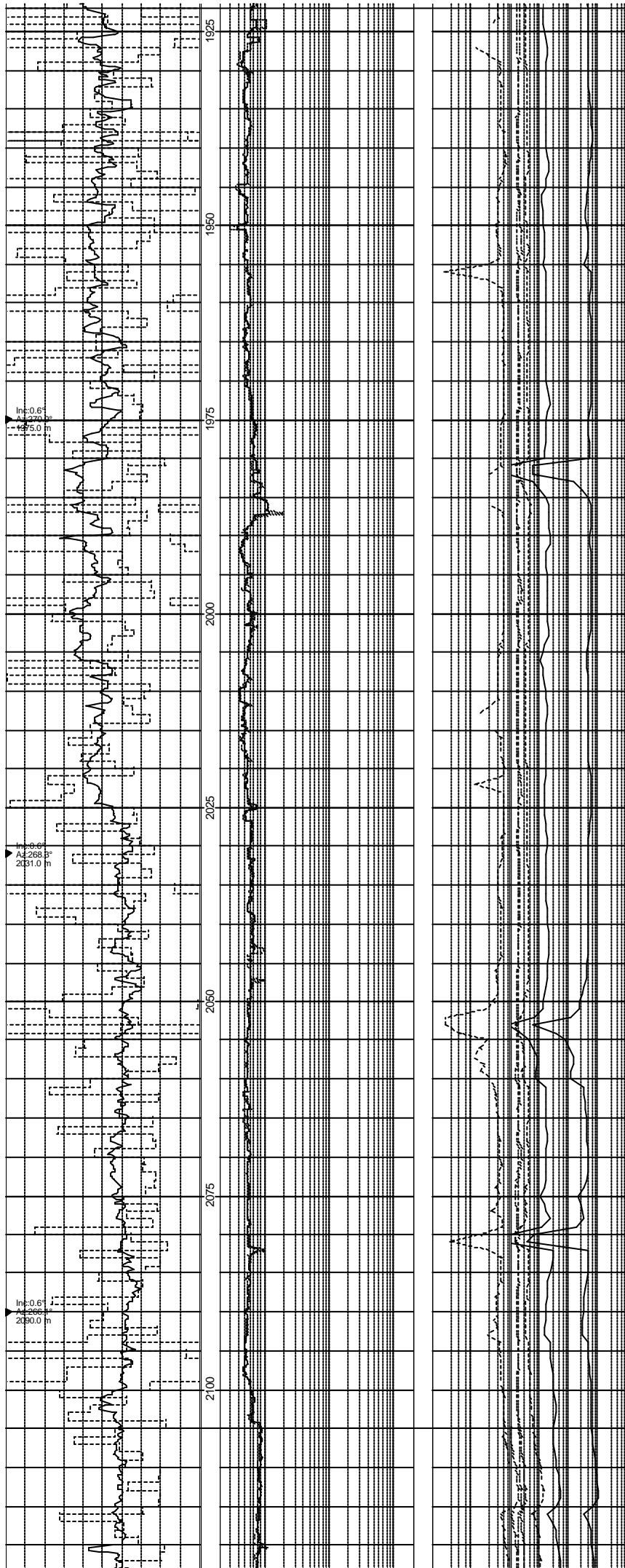
**Cst:** olv gry-olv blk, occ med bl gry- bl gry, blk, sft-frm, pred frm, pred non-slily calc, occ v calc, occ slily slty, Tr Micromic, Tr Glauc, occ v f carb frag

**Cst:** olv gry-olv blk, blk, frm, pred non-slily calc, occ v calc, occ slily slty, Tr Micromic, r Tr Glauc

**Sst:** clr trnsl-wh, vf-f, sbang-sbrnrd, w srt, frm-hd, occ sil cmt, occ slily calc cmt, pred lse gms, no vis por

<<<<<





Ls: lt brn gry-pl yel org, blk, frm-hd, occ dol, occ arg, pred microxl

Sst: med lt gry-lt gry, clr trnsl-wh qtz, v f-f, sbrndd-rddd, w srt, frm-hd, occ sil cmt, occ slily calc cmt, arg, pred lse grns, tr vis por

Clst: olv gry- olv blk, dk gnsh gry- med dk gry, frm, blk, non calc, r Micromic, r Glauc.

Clst: olv gry-olv blk, gnsh gry, frm, blk, non calc, r Micromic, occ micropyr,

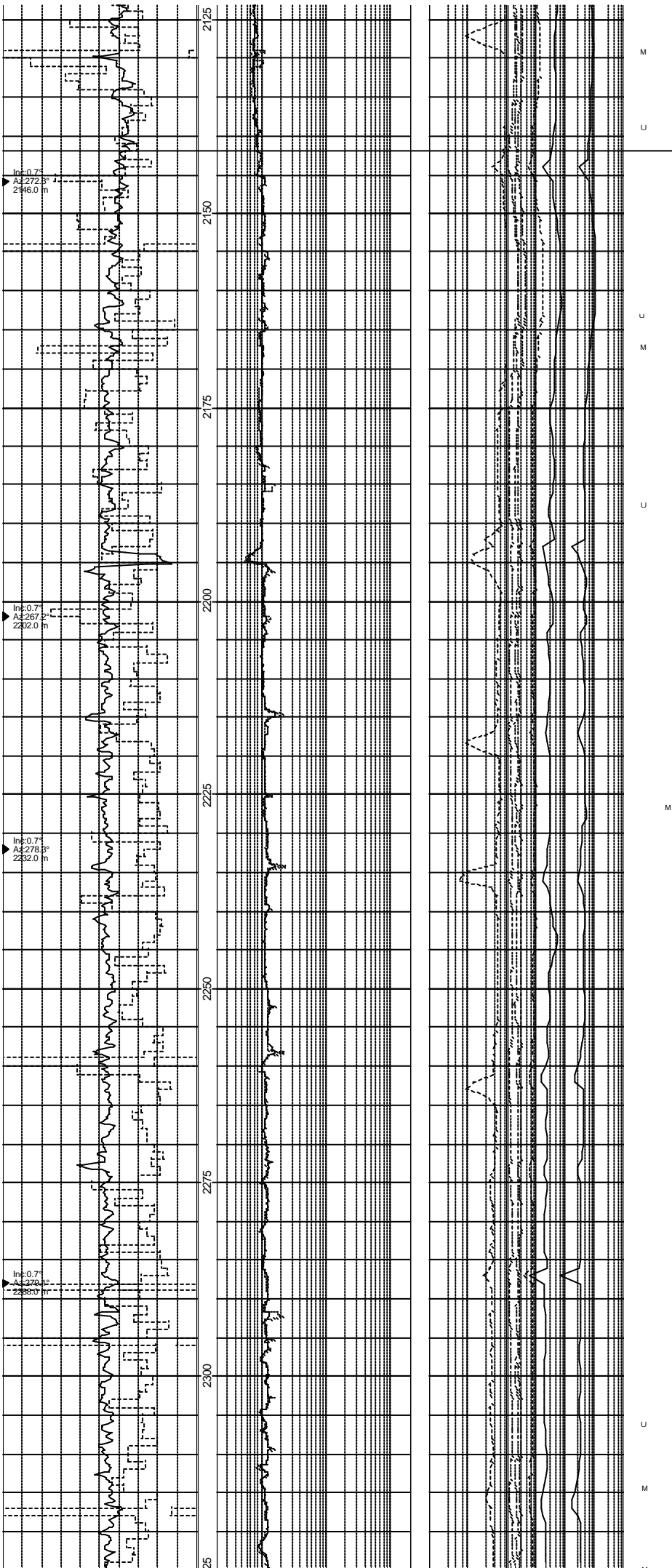
Ls: wh- lt gry, yelsh gry, frm-mo hd, blk, occ arg lam, pred microxl

Ls: wh- lt gry, yelsh gry, mod yelsh brn-dk yelsh or, blk, frm-hd, occ Dol, occ arg lam, pred microxl

Clst: olv gry-olv blk, gnsh gry, dk gry, frm, blk, non-slily calc, r micromic

Ls: wh- lt gry, yelsh gry, mod yelsh brn, frm-mod hd, I.P. arg

Clst: med dk gry-med gry, occ grad olv blk, frm, blk, slily slty, non-slily calc, Tr micromic, Tr Micromic, Tr Dur nod, I.P. slty, r Glauc

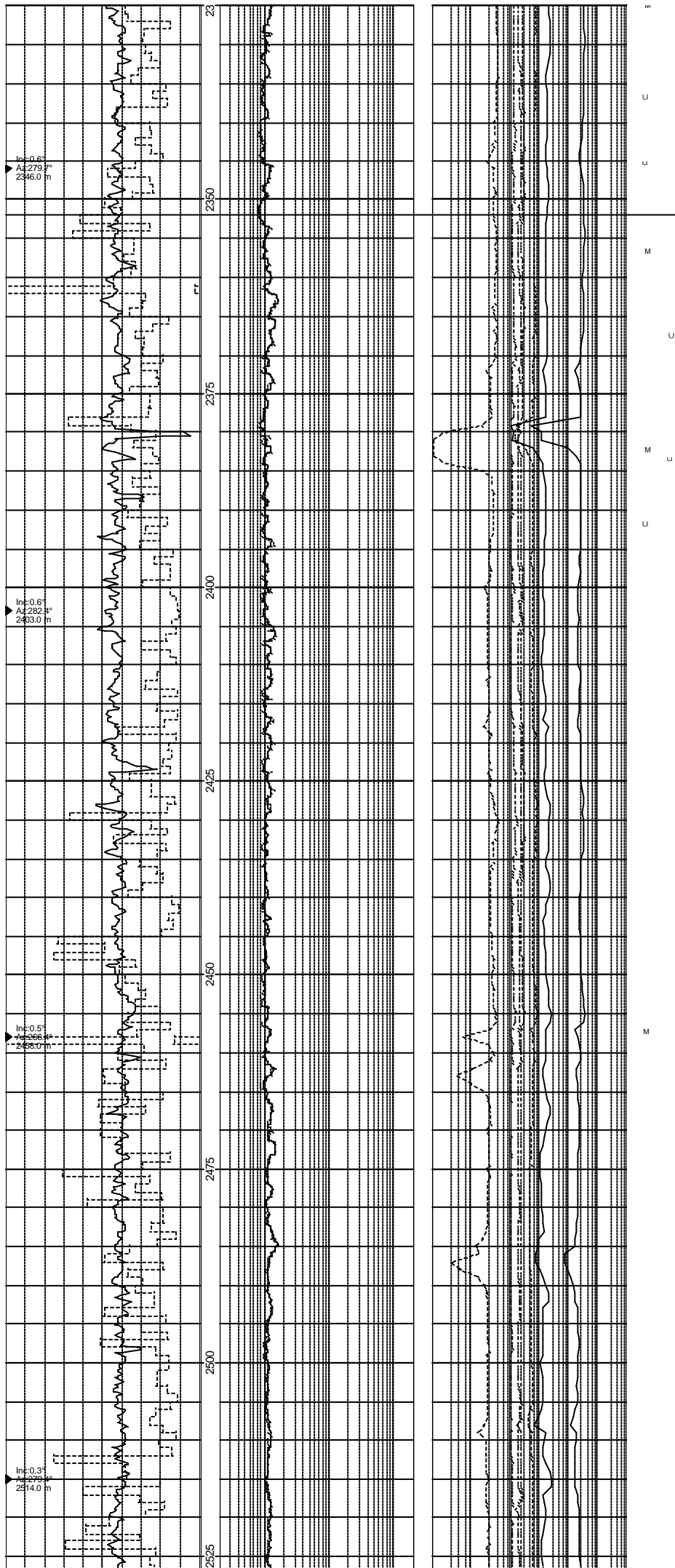


Top Nise Fm at 2142 m MD / 2141.8 m TVD

**Clst:** m dk gry-med gry, frm, blk,v sily, grad Slst, non-sily calc, gd Tr Micromic, gd Tr Micropy, gd Tr Glau,

**Ls:** wh-lt gry, yelsh gry, mod yelsh bm, frm-mod hd, I.P. arg

**Clst:** m dk gry - med gry, frm, blk,v sily, grad Slst, non - sily calc, gd Tr Micromic, gd Tr Micropy, gd Tr Glau,



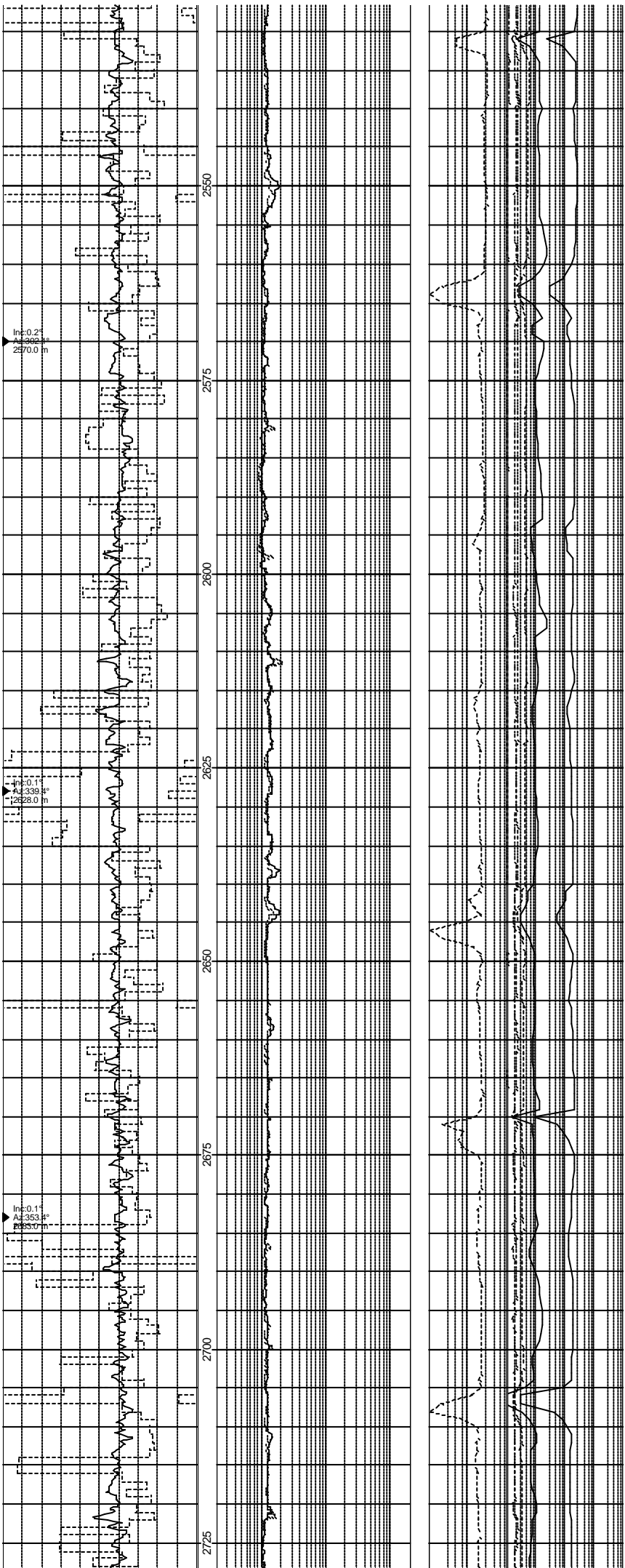
**Cst:** med dk gry-med gry, frm, blk, sily grad Stst, non-occ sily calc, Micromic, Tr Micropyr, Tr Glauca, r Tr Carb frag

**Ls:** wh-lt gry, occ dol yel gry, occ v f blk spt, frm-hd, occ arg, pred microxin

Top Kvitnos Fm at 2352 m MD / 2351.8 m TVD

**Cst:** med dk gry-med gry, frm, blk, sily sily, non-occ sily calc, Tr Micromic

**Sst:** clr trnsi, f- v crs, sbrndd-rnd, pr srt, hd, no vis cmt, lse Qtz grns



M

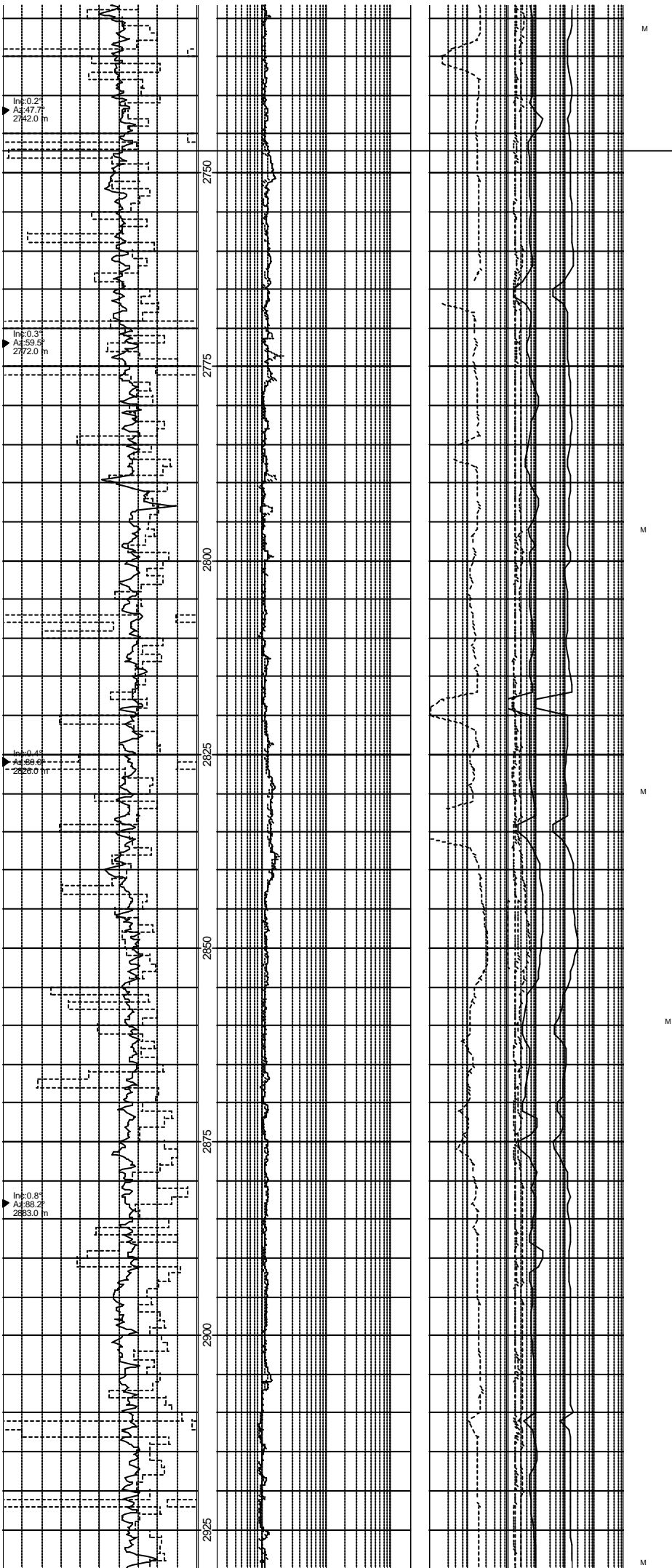
M

M

Ls: wh-med lt gry, occ yel gry, frm-hd, occ dol, occ arg lam, occ slty, pred microxl

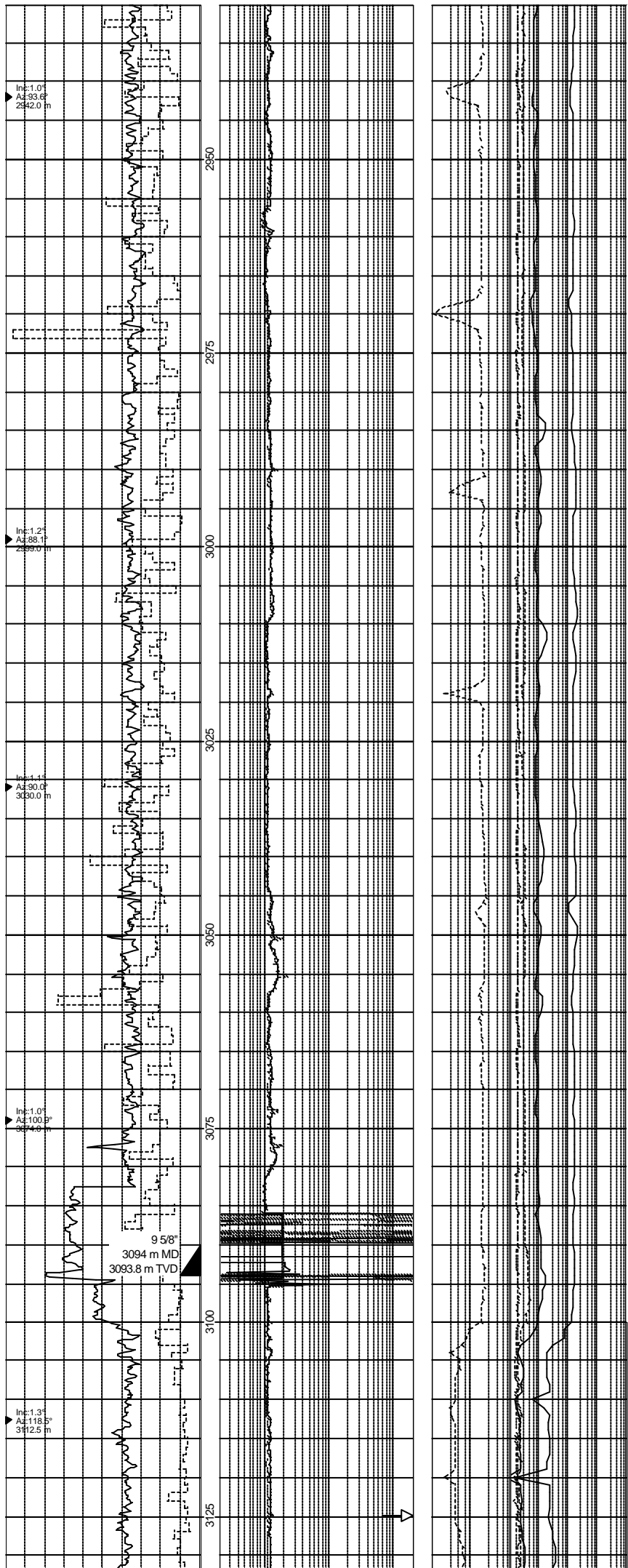
Clst: dk gry-med dk gry, frm, blk, silty slty, non-occ silty calc, Tr  
Micromic

Ls: wh-med lt gry, occ yel gry, frm-hd, occ dol, occ arg lam, occ slty, pred microxl



Top Lange Fm at 2747.2 m MD / 2747 m TVD

LS: pred dk yelish brn, occ wh-lt gry, frm, blk, pred microxln, I.P. arg, occ dol



**Ls:** wh-lt gry, occ yel brn, frm, blk, pred arg, occ microxl, occ dol

**Ls:** lt gry-lt brn gry, occ yel brn, frm, blk, pred arg, occ microxl, occ dol

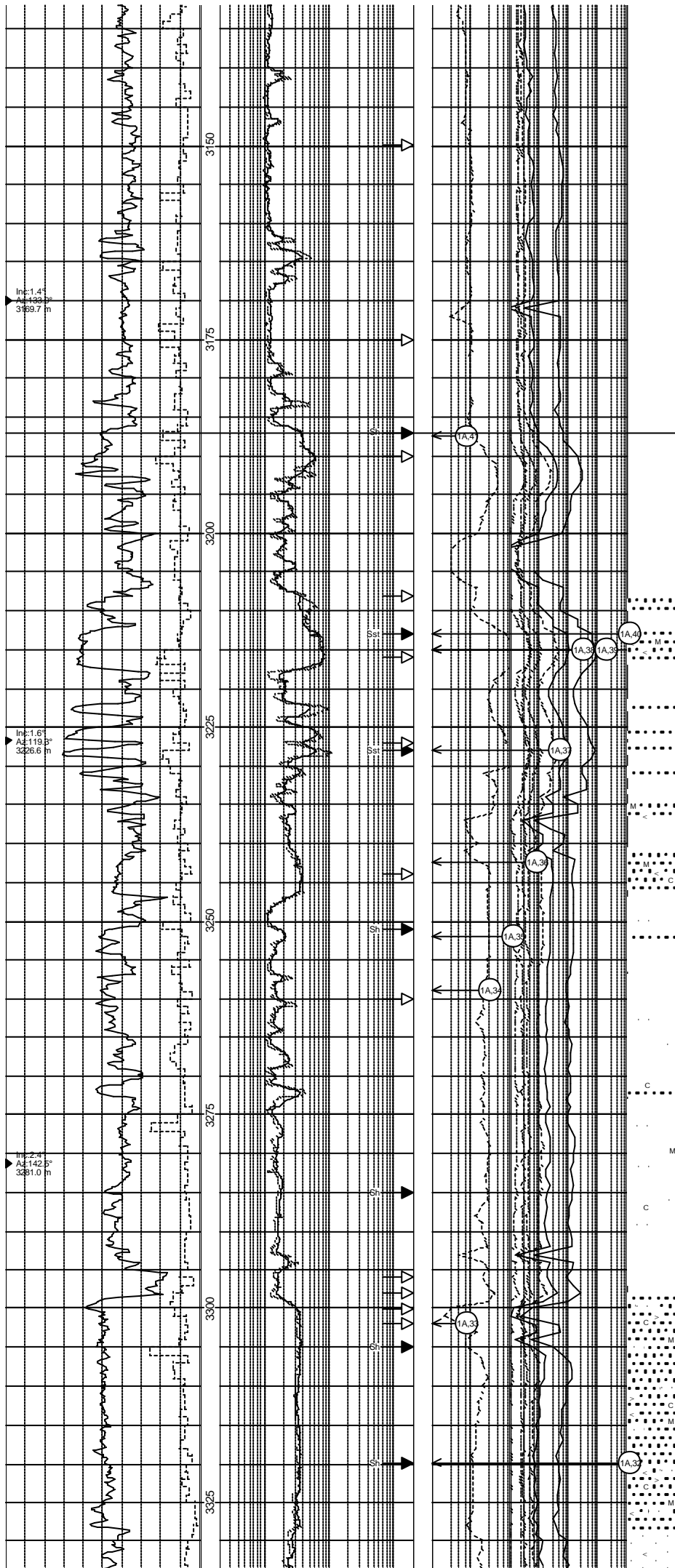
**Clst:** dk gry-med dk gry, frm, blk, silty sty, non-occ silty calc, Tr Micromic, Tr Micropyr Nod

**Clst:** olv blk-dk gry, frm-mod hd, sbfis-fis, gen sl calc-calc, micromic, silty.

**Sst:** lt gry, clr-mky Qtz, f-r crs, sbang, mod srt, mod hd-hd, dol cmt, r Tr carb, nvp, n.s.

**Sst:** lt gry-med lt gry, clr-mky Qtz, v f-f, occ med-crs, sbang-sbrddd, wh-mod srt, frm-mod hd, silty calc-dol cmt, r Tr Carb, nvp, n.s

**Ls:** wh-v lt gry, frm, occ silty arg, pred microxl



**Sst:** med lt gry-med gry, clr-mky Qtz, v f-m, pred f-m, r crs, sbang-sbrmdd, wl-mod srt, frm-mod hd, slily calc-calc cmt, pred arg, nvp, n.s

**Ls:** wh-med lt gry, frm, slily slty, occ arg

**Sst:** med lt gry-med gry, clr-mky wh Qtz, v f-f, occ m, r crs, sbang-sbrmdd, mod srt, frm-mod hd, slily-v calc cmt, pred arg, Tr Carb Frag, nvp, n.s

**Clst:** olv blk-dk gry, frm-mod hd, sbfis-fis, calc-v calc, occ grad Mrl, micromic, slty

**Intra Lange Sst at 3187 m MD / 3186.7 m TVD**

**Slst:** olv blk-dk gry, frm-mod hd, sbfis-fis, calc-v calc grad Mrl, micromic, arg, occ slily sdy

**Sst:** med gry-med dk gry, occ med lt gry, clr-mky wh Qtz, v f-f, r med, ang-sbang, wl srt, fri-frm, slily-v calc cmt, pred v calc, slty-arg, r Tr Carb Frag, Tr Micromic, r Tr Glauc, nvp, n.s

**Ls:** w lt gry-med lt gry, occ clr trns microxln, frm-mod hd, pred arg

**Sst:** med gry- dk gry, clr-mky wh Qtz, v f- med, pred f-med, sbang-sbrmdd, pred ang-sbrmdd, wl-mod srt, fri-frm, calc-v calc cmt, slty-arg, Tr Carb Frag, Tr Micromic, r Tr Glauc, nvp, n.s

**Ls:** lt brn gry-m gry-olv gry, mod hd, blk, microxln, loc v arg grad Mrl

**Clst(1):** dk gry-olv blk, frm-mod hd, sbfis, calc loc grad Mrl, gen var slty loc grad Slst, Tr carb, Tr sdy vf.

**Clst(2):** m gry-olv gry, mod hd, sbfis-fis, non calc, micromic, slty r vf sdy.

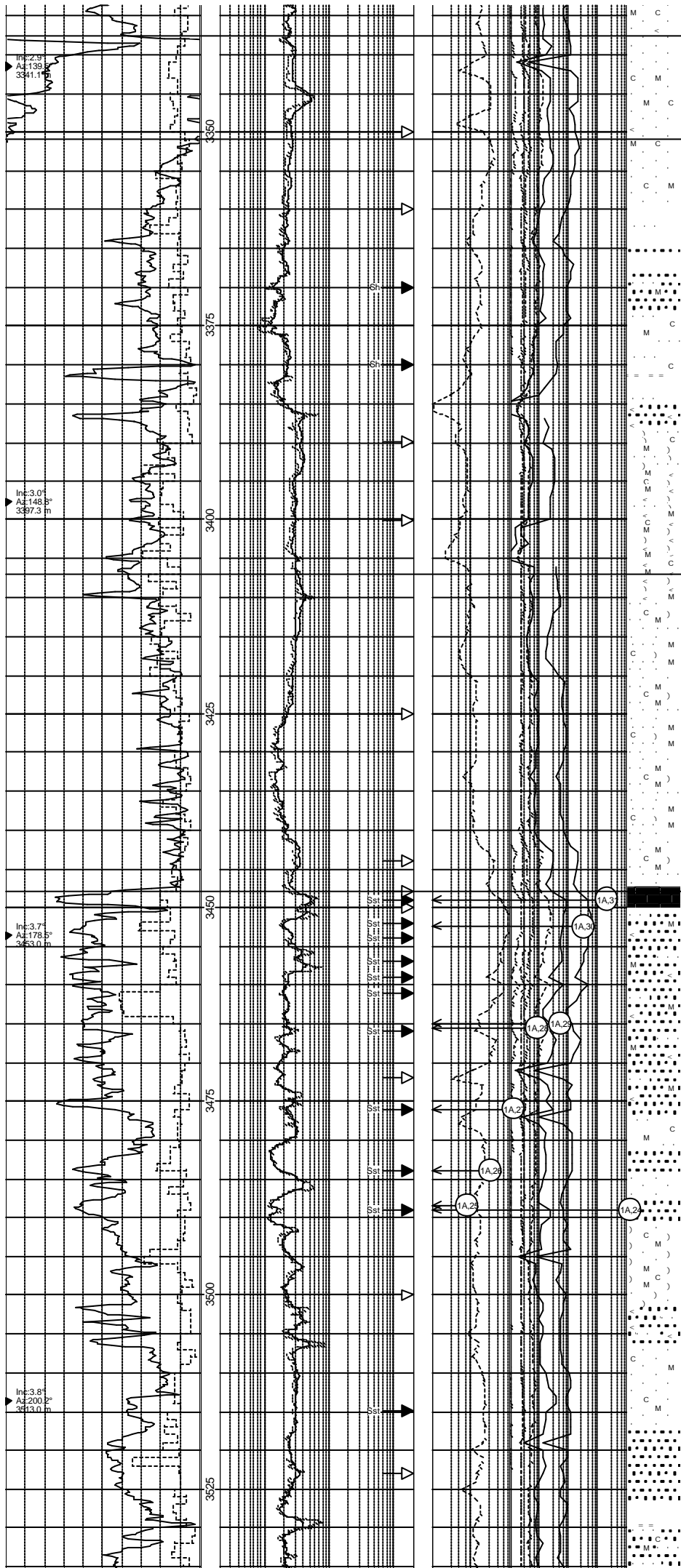
**Clst(1):** dk gry-olv blk, mod hd, sbfis-fis, gen non calc, micromic, slty, Tr carb.

**Sst:** m lt gry, clr-mky Qtz, vf-f, r m, sbang-sbrmdd, pr-mod srt, fri-mod hd, gen Dol cmt, occ calc cmt, gen var arg/sly Mtrx, Tr carb, n.v.p. Shows: Sptd bri wh dir Fluor, slo-mod strmg wh Fluor cut, no vis cut, wk wh Fluor Res, no vis Res.

**Sst:** m gry-med dk gry, clr-mky Qtz, v f-m, Tr crs, ang-sbrmdd, mod srt, fri-frm, calc-v calc cmt, pred arg/sly grad Clst/Slst, micromic, Tr carb, n.v.p.n/s

**Ls:** v lt gry-v pl org., occ wh, microxln, fri-mod hd, gen arg.

**Slst:** med dk gry-dk gry, sbfis, frm, v calc grad Mrl, v sdy grad Sst, micromic. Tr carb



Top Spekk Fm at 3337.6 m MD / 3337.2 m TVD

Top Melke Fm at 3350.9 m MD / 3350.5 m TVD

**Sst:** med lt gry-med dk gry, clr-mky Qtz, v f-m, sbang-sbrnnd, wl-mod srt, fri-fm, v calc cmt, v arg/sly, micromic, n.v.p, n/s

**Clst:** dk gry-gry blk, sbfis-fis, frm-mod hd, non-sliily calc, Tr Micromic

**Ls:** yel gry-gry org, blk, frm sliily arg

**Sst:** lt gry-m dk gry, clr-mky Qtz, vf-f, Tr m, ang - sbrnnd, mod srt, fri-mod hd, gen v calc I.P. grad sdy Ls, arg/sly Mtrx loc grad Stst/Clst sdy, micromic, Tr carb, n.v.p., n/s.

Top Not Fm at 3407 m MD / 3406.5 m TVD

**Stst:** dk gry, sbfis, mod hd, calc, micromic, Tr carb, I.P.v sdy grad Sst vf., Tr Pyr.

**Clst:** dk gry-gry blk, sbfis, mod hd, non calc, loc calc, micromic, Tr carb, I.P. vf sdy grad Sst, gen v sity grad Stst, Tr Pyr.

Top Ile Fm at 3447.9 m MD / 3447.4 m TVD

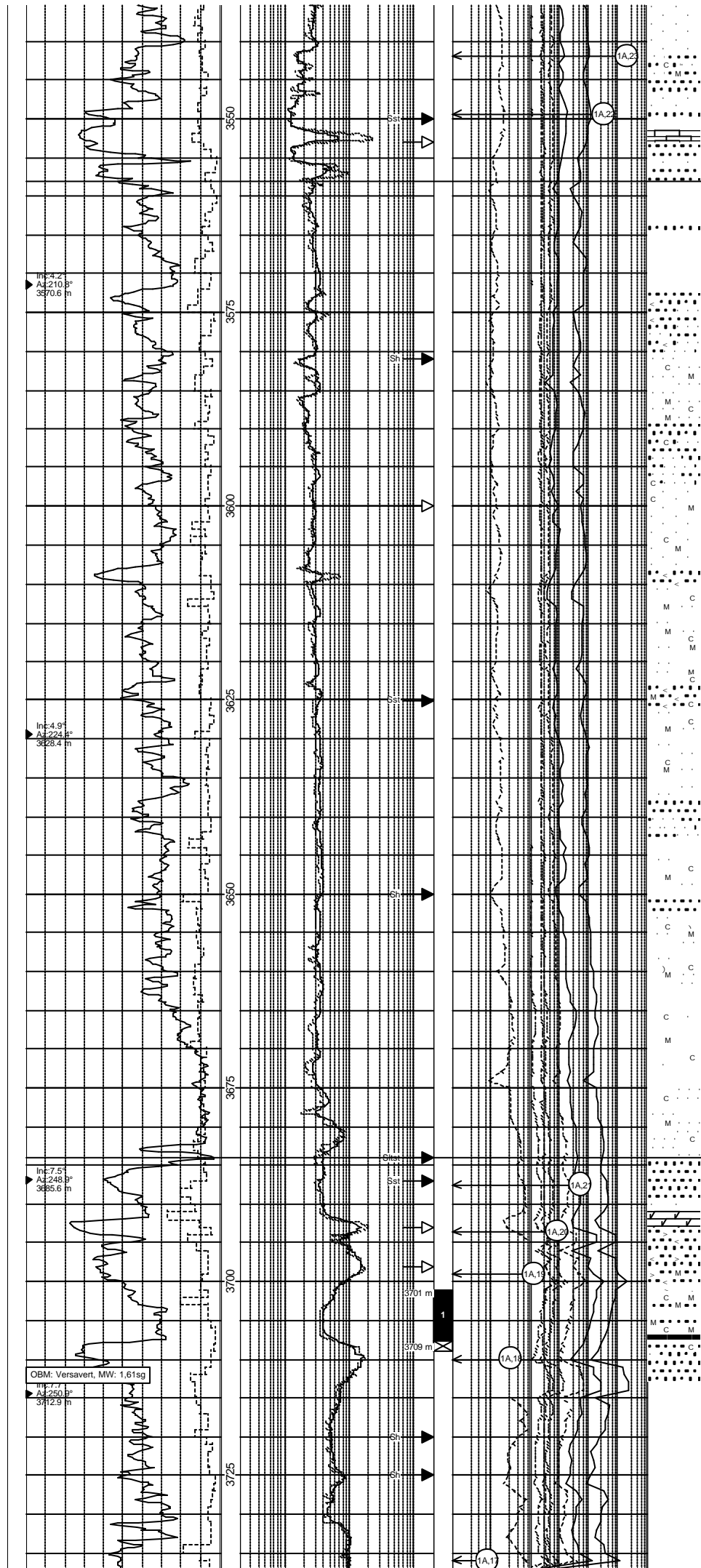
**C:** blk-brn blk, Anthr, r vit/brit, arg, mod hd

**Sst:** lt olv gry, clr-mky-Qtz, vf-f, pred f, sbang-sbrnnd, mod srt, gen non calc, I.P.calc, micromic, Tr carb, loc v arg /sly grad Stst/Clst, n.v.p. , n/s

**Stst:** lt gry-med lt gry, amor, sft-occ frm, sliily calc, v sdy grad Sst a/a, v arg, micromic, Tr carb

**Sst:** lt olv gry-med gry, clr-mky Qtz, vf-f, pred v f, sbang-sbrnnd, wl srt, sliily calc-calc, micromic, carb, v arg /sly grad Stst/Clst, n.v.p. , n/s





Ls: v lt gry-yel gry, sft, pred slily arg, occ microxln

Top Ror Fm at 3558 m MD / 3557.2 m TVD

Clst: med gry-med dk gry, sbfis-fis, frm, slily calc, slty

Sst: med lt gry-med gry, clr-mky Qtz, v f-f, pred v f, sbang-sbrmdd, wl srt, fri, sft, calc-v calc, arg, micromic Tr Carb, n.v.p, n/s

Clst: dk gry-gry blk, fis, splin, mod hd-hd, micromic, non calc

Sst: lt gry-olt gry, clr-mky Qtz, vf-f, Tr m, sbang-sbrmdd, mod srt, fri-mod hd, gen calc cmt, occ sl sil cmt, micromic, l.P. v slty grad Stst, n.v.p., n/s.

Clst: gen gry-blk-olv blk, mnv olv gry-m dk gry, mod hd, sbfis-fis, sl calc, r dol cmt, micromic gen slty loc grad Stst, loc vf sdy grad Sst.

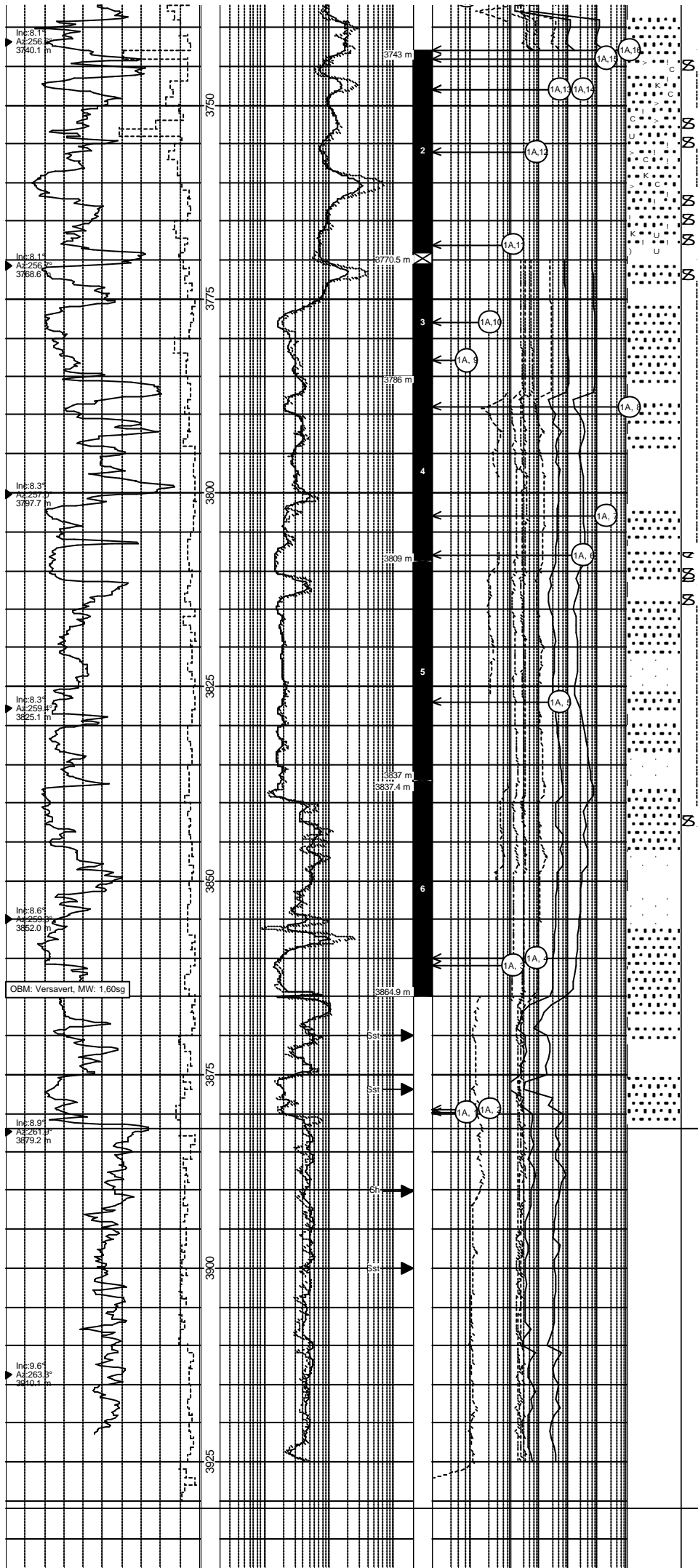
Clst: olv blk, mod hd, sbfis-fis, non calc, micromic, Tr carb, sty, r Tr vf sdy.

Top Tilje Fm at 3684 m MD / 3682.7 m TVD

Sst: lt brn gry-lt olv gry, clr-mky Qtz, gen f, sbang-sbrmdd, mod srt, fri-mod hd, var dol cmt, Tr micromic, Tr carb, var slty, n.v.p.

Sst: lt gry, clr-mky Qtz, f, sbang-sbrmdd, mod srt, mod hd, calc cmt, Tr carb, Tr micromic, n.v.p.

Clst: olv blk-gry blk, hd-v hd, fis, dol cmt, micromic, mic, carb, slty, w/Sst lens; lt brn, gry, clr-mky Qtz, vf-f, gen f, sbang-sbrmdd, mod srt, hd, dol/sil cmt, micromic, Tr carb, n.v.p.



**Sst:** pl yel brn-dk yel brn, clr-trsl Qtz, pl yel brn Qtz, vf-f, occ m, sbang-ang, mod srt, v hd-hd, dol/sil cmt, l.P.calc cmt, loc Mic, gen Sst Rpl w/Sh drapes: m dk gry-dk gry, brn blk, hd, non calc, slty, Mic, carb.

**Sst:** v lt gry-pk gry, pl yel brn, clr-trsl Qtz, gen f-m, Tr crs, hd, gen sil cmt, also dol and calc cmt, r Kao Mtrx, r Mic, r carb, n.v.p.

**Sst:** lt gry-pk gry, clr-mky Qtz, vf-f, occ m, r crs,

**Sst w/Sh:** v lt gry-pk gry-pl yel or-dk yel brn, clr-mky Qtz, vf-m, ang-sbrndd, mod srt, hd, gen sil cmt, loc calc cmt, Tr Mic, Tr carb, n.v.p., loc Sh lam: m dk gry-dk gry, mod hd, slty, gen non calc, Mic, carb, r Pyr Nod.

**Sst:** pl yel brn-dk yel brn, loc lt gry, clr-trsl Qtz, pl yel brn Qtz, f-m, loc vf, mod srt-wl srt, sbang-ang, hd, calc cmt, loc sil cmt, loc Kao Mtrx, Tr Mic, R-Tr carb, loc Sh lam: m dk gry-dk gry, mod hd, non calc, slty, abd Mic, carb.

**Sst:** lt gry-m lt gry, occ lt olv gry, loc pl yel brn, clr-trsl Qtz, occ mky Qtz, f-m, loc crs, loc vf, mod srt, sbmdd-sbang, gen calc cmt, loc sil cmt, Mic, Tr carb, bcm Tr Pyr Nod.

**Sst:** wh-v lt gry,lt olv gry,clr-mky Qtz,f-m,bcm f-crs,sbang-sbrmdd,calc cmt,mod srt bcm pr srt,loc Pyr Nod,r carb,bcm sl arg

**Clst:** dk gry-gry blk,frm-mod hd,sbbkly,slty,non calc,micromic,micropyr

**Top Åre Fm at 3882 m MD / 3878.7 m TVD**

**Sst:** lt gry,pl yel brn-yel brn,f-crs,bcm pred vf-f,ang-sbrmdd,pr srt,frm,calc cmt,loc arg

**Clst:** dsky yel brn-blk,bcm lt olv gry,mod hd,sbbkly,non calc,slty,l.P.vf sdy,micromic,carb,micropyr,l.P.grd Coaly sh

**Slst:** pl yel brn-dk yel brn,frm-mod hd,non-sl calc,r micromic

**Sst:** pl yel brn-yel brn,clr-mky Qtz,vf-f,r m,r crs,ang-sbrmdd,pr-mod srt,frm,calc cmt,arg

**Clst:** olv gry,dk yel brn,frm,v slty grd Slst,l.P.vf sdy,non calc,mic,r micropyr,v carb,Tr C;blk,brit

**Ls:** wh,frm,microxl,r Mic

**TD at 3931 m MD / 3927 m TVD**

