

**INTERPRETATION RESULTS**

**DRILLING RESULTS**

6407 / 7-6

**LEGEND:**

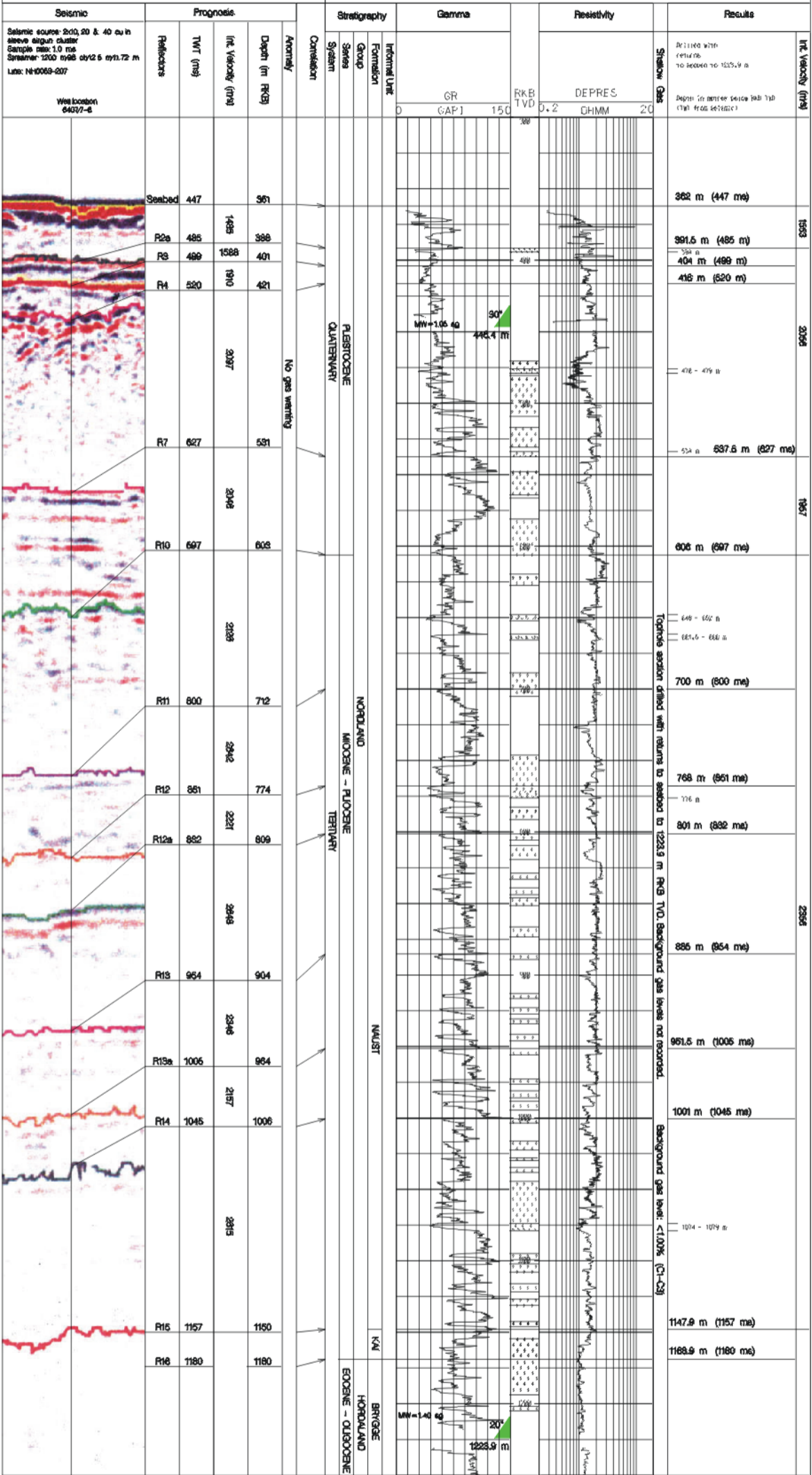
- Correlation of seismic event with log event (Seismic pick in site survey report)
- ← Revealed seismic pick (Based on log results)

**COORDINATES:**  
 Geographic:  
 64° 17' 40.66" N - 07° 06' 16.21" E  
 UTM:  
 7 181 890.0 mN - 408 270.3 mE  
 ED60, Zone 32 (GM 0° E).

**RIG:** Scarabeo 6 **RKB:** 26 m  
**SPUD DATE:** 18.10.2000  
**COMPLETION DATE:** 17.12.2000

**LEGEND:**

- - Clay/claystone
- - Sand/sandstone
- - Sil/Siltstone
- - Limestone
- ▨ - Cement plug



**NOTES:**  
 The given stratigraphy above 1223.9 RKB TVD is based on seismic correlation to other wells as no details or outcrops are available from this interval in well 6407/-6.  
 Depth to formation top below 1147.9 m RKB TVD were provided by the Project Team.

Drilling Date: 18/10/2000

Well No: 6407-6

Scale: 1:2000

Revision: 0

**Marine Surveys Saction**

Post Site Survey for Well 67047-6

Comparison for predicted lithology, stratigraphy, shallow gas and obtained drilling results

Prepared by: ZHRS  
 Drawn by: ARK  
 Checked by: ESA  
 Date: 23.08.2001  
 File No: 64070706.pdf