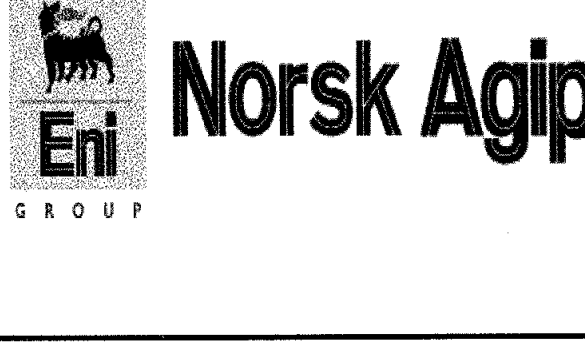


Goliath Prospect

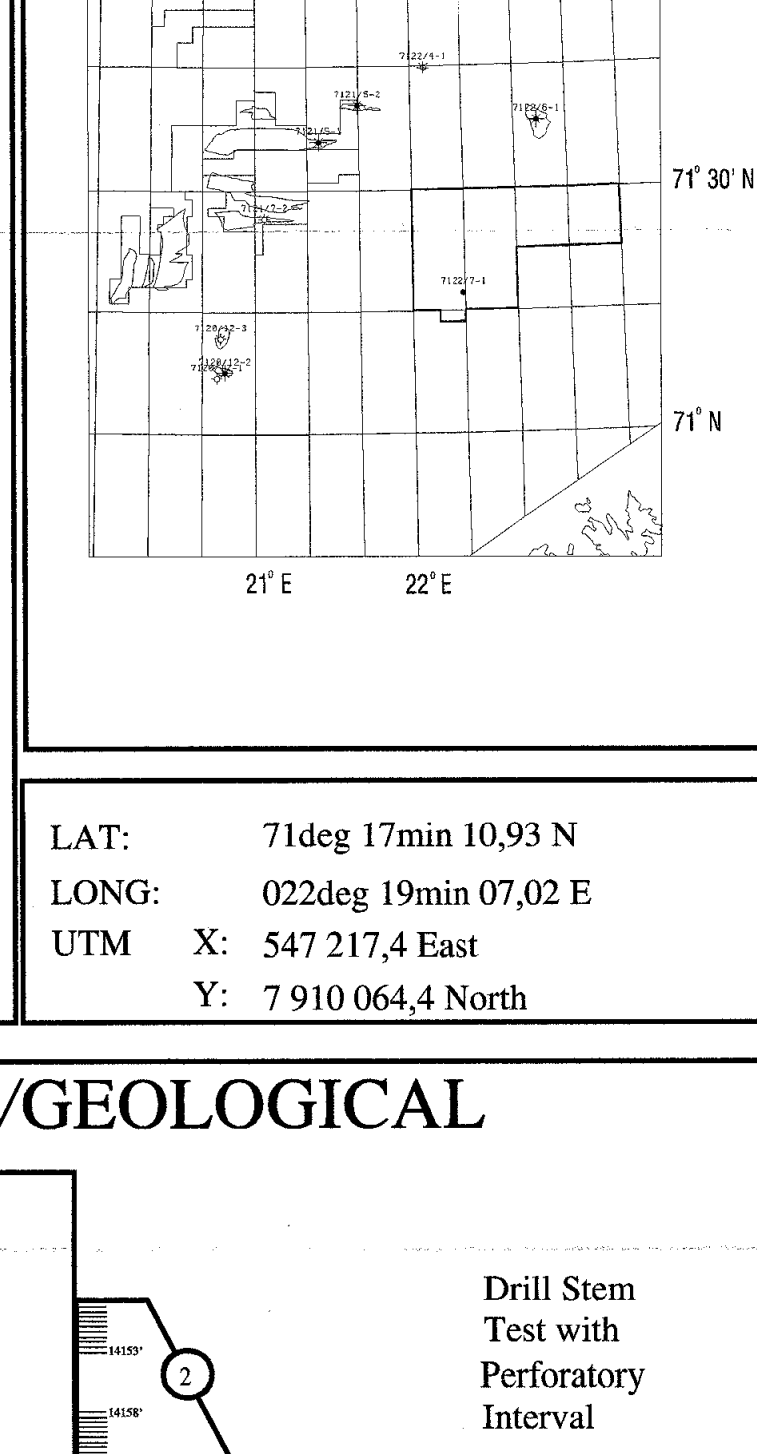
7122/7-1



COMPLETION LOG

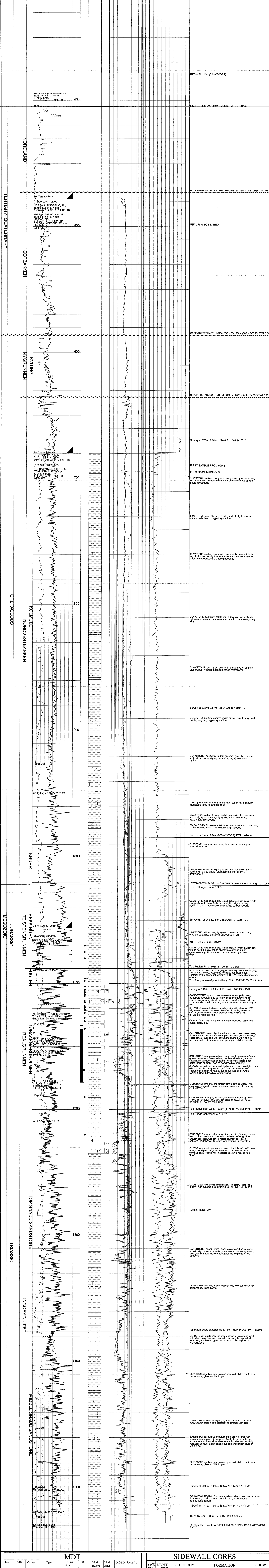
1:500

COUNTRY: Norway OPERATOR: Norsk Agip (25%)
AREA: Goliath Prospect PARTNERS: Phillips (25%) Statoil/SDPI (20%) Enterprise Oil (15%) Fortum Petroleum A/S (15%)
LICENSE: PL 229
BLOCK: 7122/7
SEISMIC REFERENCE: NA9801-3D Inline 710
RIG (Type): Crossline 3000 Transocean Arctic (Semi Sub) Transocean
T.D (Contractor): 1524m MDRKB, 1500m TVDSS
T.D (Logger): 1524m MDRKB, 1500m TVDSS
KB: 24m
WATER DEPTH: 190m
SPUD DATE: 16/09/00
DRILLING END DATE: 29/09/00
RIG RELEASED DATE: 05/10/00
STATUS: Plugged and abandoned



LITHOLOGICAL SYMBOLS table with symbols for Sandstone, Siltstone, Clay/Claystone, Dolomite, Limestone, Turf, Marl, Argillaceous Limestone, Carbonaceous Claystone, Lignite.

ENGINEERING/GEOLOGICAL table with symbols for Casing shoe, Core and Depth Shifted Core, Lost Circulation, Bridge Plug, Cement Plug, Drill Stem Test with Perforatory Interval, MDT Sample, Sidewall, Core, Recovered, Not Recovered, Hydrocarbon Fluorescence.



MDT table with columns: Test, MD, Gauge, Type, Formation, ISI, Mad Before, Mad After, MOBD, Remarks.

SIDEWALL CORES table with columns: SWC No, DEPTH m BRT, LITHOLOGY, FORMATION, SHOW.

HOLE AND CASING table with columns: HOLE, INTERVAL m BRT, CSG, CSG WEIGHT (lbs/ft), CSG GRADE.

CORING REPORT table with columns: CORE NO, INTERVAL m, CORE REC, RECOVER, GROUP, AGE.

MWD LOGS table with columns: RUN NO, HOLE INTERVAL m, DRILLED IN DATE, OUT DATE, LOGS, COMMENTS.

WIRELINE LOGGING table with columns: RUN No, TYPE OF LOGS, RECORDED INTERVAL m, DATE, SERVICE STARTED, RECORDING TIME, SERVICE ENDED, TOTAL TIME SERVICE, LOST TIME, TIME SINCE CIRC, BHT.

PL 229-Block 7122/7 Prognosis versus Actual table with columns: Location, Progn. Depth, Actual Depth, Delta, Horizon.