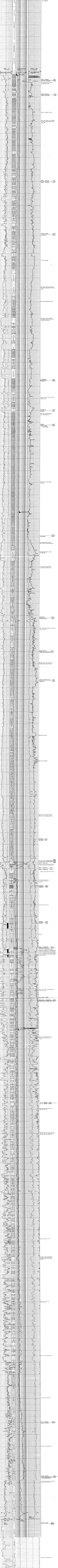


MOBIL EXPLORATION NORWAY INC. 33/12-2 STATFJORD FIELD FINAL COMPOSITE LOG

REGISTRY NO. 142 18 93

CO-ORDINATES: 01° 13' 30" NORTH, 015° 51' 25" EAST, ELEVATION: 4528 FEET, TOTAL DEPTH: 14286 FEET, RIG RELEASE DATE: 6 JUNE 1974, WELL STATUS: OIL DISCOVERED, PLUGGED AND ABANDONED.

LITHOLOGY SYMBOLS table with patterns for Sandstone, Shale, Limestone, etc.



Geological notes and stratigraphic markers at the bottom of the log.