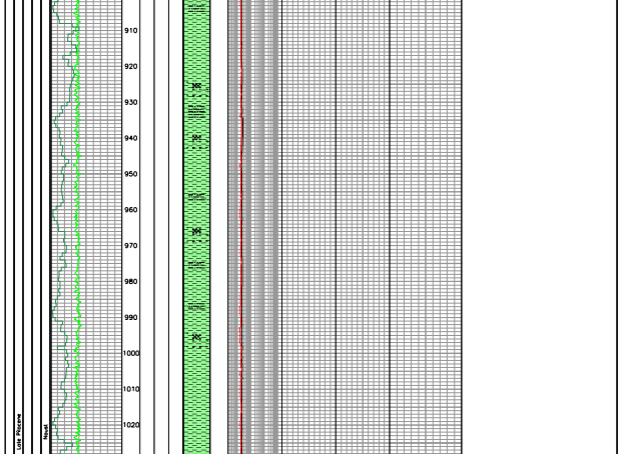


OPERATOR : BP Amoco Norge AS (30%)
COUNTRY : NORWAY
AREA : Nordsjøen Sea
LICENSE : 212
BLOCK : 695-L
NPD PERMIT NO. : 695-L
CONCESSION : 695-L
DATE ON LOCATION : 07.02.2001 (11:30)
DATE DATA REACHED : 26.03.2001 (06:00)
DATE LOGGING BEGAN : 26.03.2001 (07:00)
DATE LOGGING ENDED : 13.04.2001
WELL STATUS : O & G Gas Well
WELL CLASSIFICATION :

SEISMIC COORDINATES
 UTM : 450877000.0
 UTM : 726387300.0
 UTM : 450877000.0
 UTM : 726387300.0
WATER DEPTH : 421 m
K.B. ELEV. : 25 m
TOTAL DEPTH : 3230 m (Roggers depth)
ARE :

LOGGING CONTRACTOR : STEMA DEE
WELL LOGGING CONTRACTOR : Steima Drilling
MUD LOGGING CONTRACTOR : Shambarger W. Service
MUD LOGGING CONTRACTOR : Steima
WELLBITE GEOLOGISTS :
 Ina Clavert
 O.L. Lunde
 Alan Williams
COMPILED BY :
 Inge Ellismann
 Jan Rieckman
 Time Haulberg

CASING RECORD		MUD DATA	
Date	Depth	Mud Weight	Type
26/03/01	0 - 100	1.84SG	SEAWATER - VS SWEEPS
26/03/01	100 - 1214	1.84SG	KOL / G / YCOL
26/03/01	1214 - 3230	1.28 - 1.99SG	KOL



Depth (m)	Formation	Grain Size	Color	Remarks
0 - 100	SEAWATER
100 - 1214	KOL / G / YCOL
1214 - 3230	KOL

Depth (m)	Formation	Grain Size	Color	Remarks
0 - 100	SEAWATER
100 - 1214	KOL / G / YCOL
1214 - 3230	KOL

Depth (m)	Formation	Grain Size	Color	Remarks
0 - 100	SEAWATER
100 - 1214	KOL / G / YCOL
1214 - 3230	KOL

Depth (m)	Formation	Grain Size	Color	Remarks
0 - 100	SEAWATER
100 - 1214	KOL / G / YCOL
1214 - 3230	KOL

Depth (m)	Formation	Grain Size	Color	Remarks
0 - 100	SEAWATER
100 - 1214	KOL / G / YCOL
1214 - 3230	KOL

Depth (m)	Formation	Grain Size	Color	Remarks
0 - 100	SEAWATER
100 - 1214	KOL / G / YCOL
1214 - 3230	KOL

Depth (m)	Formation	Grain Size	Color	Remarks
0 - 100	SEAWATER
100 - 1214	KOL / G / YCOL
1214 - 3230	KOL

Depth (m)	Formation	Grain Size	Color	Remarks
0 - 100	SEAWATER
100 - 1214	KOL / G / YCOL
1214 - 3230	KOL

Depth (m)	Formation	Grain Size	Color	Remarks
0 - 100	SEAWATER
100 - 1214	KOL / G / YCOL
1214 - 3230	KOL

Depth (m)	Formation	Grain Size	Color	Remarks
0 - 100	SEAWATER
100 - 1214	KOL / G / YCOL
1214 - 3230	KOL

Depth (m)	Formation	Grain Size	Color	Remarks
0 - 100	SEAWATER
100 - 1214	KOL / G / YCOL
1214 - 3230	KOL

Depth (m)	Formation	Grain Size	Color	Remarks
0 - 100	SEAWATER
100 - 1214	KOL / G / YCOL
1214 - 3230	KOL

Depth (m)	Formation	Grain Size	Color	Remarks
0 - 100	SEAWATER
100 - 1214	KOL / G / YCOL
1214 - 3230	KOL

Depth (m)	Formation	Grain Size	Color	Remarks
0 - 100	SEAWATER
100 - 1214	KOL / G / YCOL
1214 - 3230	KOL

Depth (m)	Formation	Grain Size	Color	Remarks
0 - 100	SEAWATER
100 - 1214	KOL / G / YCOL
1214 - 3230	KOL

Depth (m)	Formation	Grain Size	Color	Remarks
0 - 100	SEAWATER
100 - 1214	KOL / G / YCOL
1214 - 3230	KOL

Depth (m)	Formation	Grain Size	Color	Remarks
0 - 100	SEAWATER
100 - 1214	KOL / G / YCOL
1214 - 3230	KOL

Depth (m)	Formation	Grain Size	Color	Remarks
0 - 100	SEAWATER
100 - 1214	KOL / G / YCOL
1214 - 3230	KOL

Depth (m)	Formation	Grain Size	Color	Remarks
0 - 100	SEAWATER
100 - 1214	KOL / G / YCOL
1214 - 3230	KOL

Depth (m)	Formation	Grain Size	Color	Remarks
0 - 100	SEAWATER
100 - 1214	KOL / G / YCOL
1214 - 3230	KOL

Depth (m)	Formation	Grain Size	Color	Remarks
0 - 100	SEAWATER
100 - 1214	KOL / G / YCOL
1214 - 3230	KOL

Depth (m)	Formation	Grain Size	Color	Remarks
0 - 100	SEAWATER
100 - 1214	KOL / G / YCOL
1214 - 3230	KOL

Depth (m)	Formation	Grain Size	Color	Remarks
0 - 100	SEAWATER
100 - 1214	KOL / G / YCOL
1214 - 3230	KOL

Depth (m)	Formation	Grain Size	Color	Remarks
0 - 100	SEAWATER
100 - 1214	KOL / G / YCOL
1214 - 3230	KOL

Depth (m)	Formation	Grain Size	Color	Remarks
0 - 100	SEAWATER
100 - 1214	KOL / G / YCOL
1214 - 3230	KOL