

Print: 23.7.80 Units: M F Top Bottom Scale TD  
 Length: 5.5 FT Initials: ARC 338 807 1/80 802

DIGITAL WIRELINE LOGS PACKAGE  
 1994  
 This image may not be used or reproduced  
 without written permission from  
 SIMON PETROLEUM TECHNOLOGY

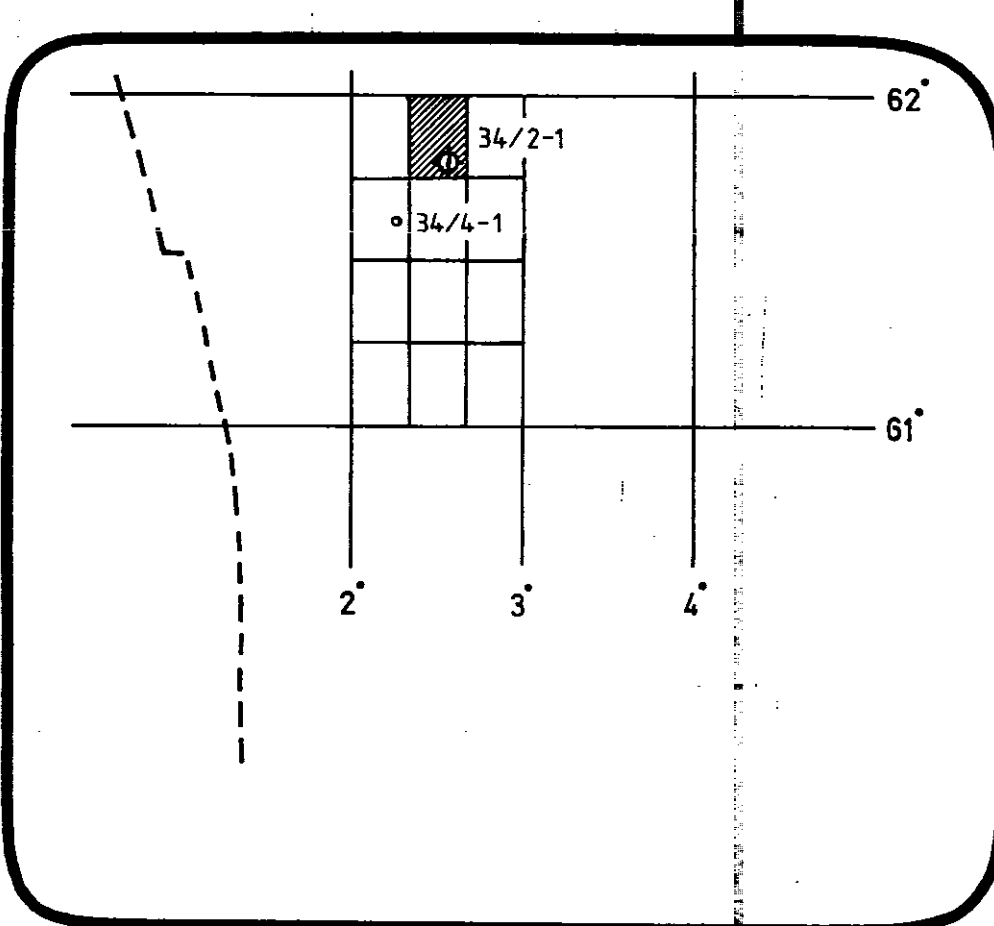
**COMPLETION LOG**



**Amoco Norway Oil Co.**

**COMPOSITE WELL LOG**  
 Metric Scale: 1:500  
**34/2-1**

AREA Northern North Sea (PLO56)  
 LOCATION 61° 46' 28.06" N, 02° 33' 06.20" E  
 RIG Byford Dolphin (SS)  
 CLASSIFICATION: Wildcat  
 SPUD DATE 23 January 1980  
 T. D. DATE: 1 February 1980  
 COMPLETION DATE 27 February 1980  
 FINAL STATUS P & A  
 K.B. ELEVATION 25m (MSL)  
 WATER DEPTH 388m (MSL)  
 TOTAL DEPTH 807m (RKB)



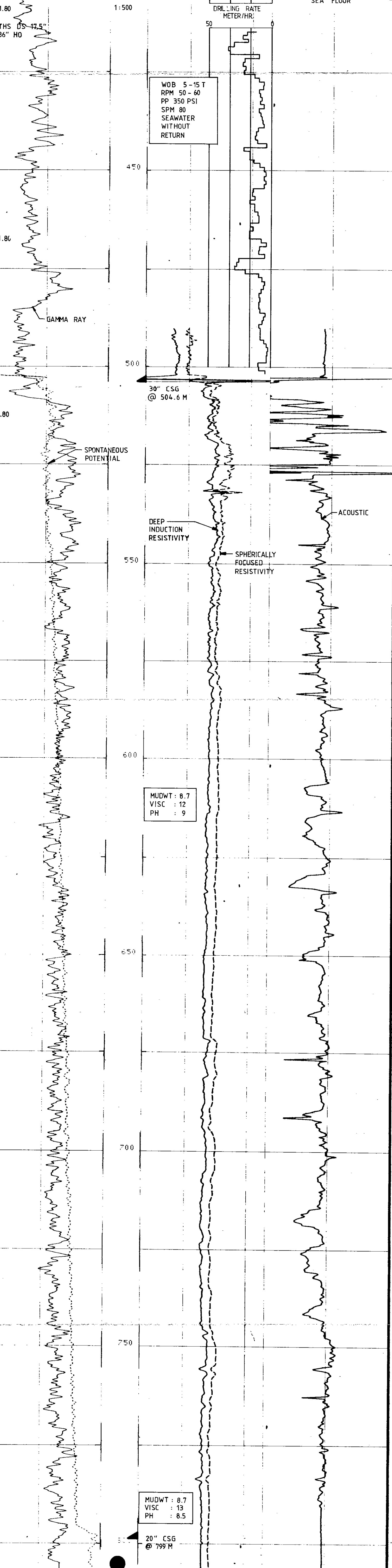
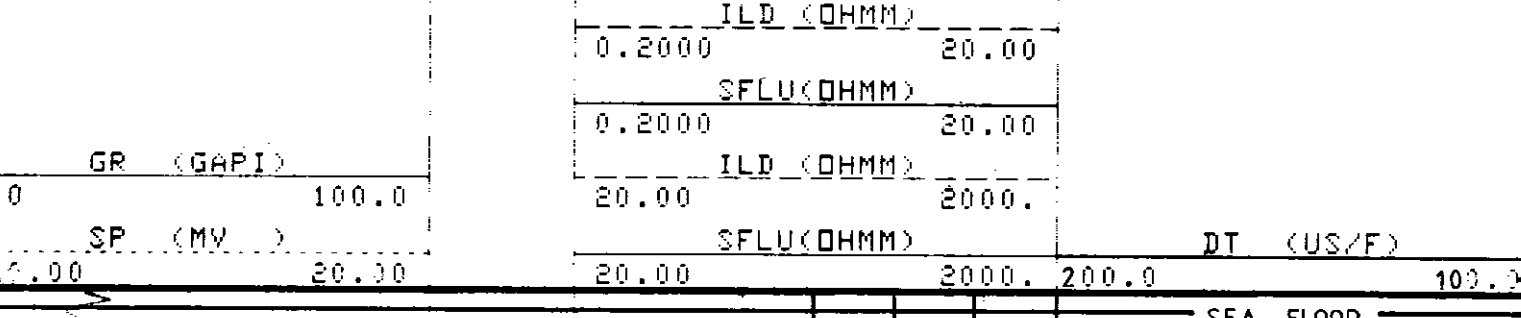
GEOLOGISTS: G.M. Rohr, O. Beyer

**LEGEND**

Breccia	Marl	Gypsum	Core Section
Gravel Conglomerate	Chalk	Anhydrite	Casings Seat
Sand Sandstone	Arenaceous	Rock salt	Perforations
Silt Siltstone	Dolomitic	K salt	Side Wall Core
Clay Claystone	Calcareous	Mg salt	Plug back TD
Shale	Tuff	Gneiss	Drill stem test
Limestone	Coal	Granite	
Dolomite	Chert	Basalt	
		Shist	

F-METER:

NAME	UNIT	VALUE	NAME	UNIT	VALUE	NAME	UNIT	VALUE
DD		0.0	BHS		0.000	CSIZ	IN	30.00
FPHI	PHIX		SBR	DHMM	1.000	DSEC	MM/M	5.410
DTF	US/F	189.0	DTM	US/F	56.00	CDTS		100.0
BS	INCH	17.50						



SEA FLOOR -388m

DEVIATION AT 454 m: 1°

DEVIATION AT 482 m: 0°

520 m Start sampling at -495 m 10 m intervals

CLST. Gry., mot., sft.-fm., sl.non. calc., slty.

TR.SND. Clr., lse., med.-crs., rnd.-slang. mod. srtd.

TR.SD. Blk., fib., hd.

CLST. A/A

TR.SND. A/A

DEVIATION AT 581 m: 1°

CLST. A/A

IST. Fawn-wh., sft.-mod. hd., mm. shell frag.

SD. 10% A/A

DEVIATION AT 638 m: 1°

CLST. Gry., mot., sft.-hd., slty; grng. cly., sft., slb., sl.calc.

TR.SD. Clr., trnsl., lse., med.-crs., ang.-slang.

TR.SL. Fawn-wh., sft.-mod. hd.

DEVIATION AT 705 m: 1°

CLST. Gry., mot., sft.-hd., slty; grng. cly., sft., slb., sl.calc., traces of igneous mat.

TR.SD. Clr.-frstd., lse., med. ang.-sub ang., mod. srtd.

DEVIATION AT 744 m: 1°

CLST. Lt.-med.gry., mot.-sft., sl.solub.-sl.plas., sl.calc., sl.sltly.

TR.SD. A/A

DEVIATION AT 791 m: 1°

MUDWT: 8.7  
 VISC: 12  
 PH: 9

MUDWT: 8.7  
 VISC: 13  
 PH: 8.5