

IKU**Continental Shelf Institute****Institutt for
kontinentalsokkelundersøkelser**

REPORT TITLE GC-MS analysis of oil from well 34/10-2	
UND — ARKIVET	
CONTRACTOR Statoil	Nr.:
CONTRACTORS REF.: S.G. Larsen	JOB. NO.:

SCIENTIST Malvin Bjørøy	DATE 14.11.1979	PROJECT NO. P-180/2/79
DEPARTMENT Environmental	NO. OF PAGES	NO. OF ENCLOSURE
RESPONSIBLE SCIENTIST Malvin Bjørøy		

SUMMARY The analysed oil does not correlate with any previously analysed samples.
--

KEY WORDS

Crude oil correlation

The oil from well 34/10-2 was treated and analysed by GS-MS under identical conditions to those reported in IKU report P180/1/79.

The sample appears to be low in absolute concentrations of triterpanes and steranes. However, the sterane and triterpane ratios used previously are listed in Tables 1 and 2. The absence of the C₂₈-triterpane from this sample suggests the oil to have a different origin than the oil found in 34/10-1. However, the sterane distribution observed is not unlike that obtained for the oil from 34/10-1 but differs considerably from those from the extracts samples from well 34/10-2, and appears to be more mature.

On the basis of these analysis the following conclusions may be drawn.

The oil from well 34/10-2 is not sourced from the same source rock as the oil found in 34/10-1. There might be a possibility that the oil in 34/10-1 is sourced from two different source rocks and that one of these is also source rock for the oil found in 34/10-2. The oil in 34/10-2 is not sourced from any of the penetrated shale sequences in this well.

Table 1

Relative Abundance of Major Steranes in Sample (Well 34/10-2)

Sterane Ratio	1/2	1/7	7/8	8/9	1/11	9/11	1/14	1/17	15/17	11/17
Parameter	1	2	3	4	5	6	7	8	9	10

Table 2

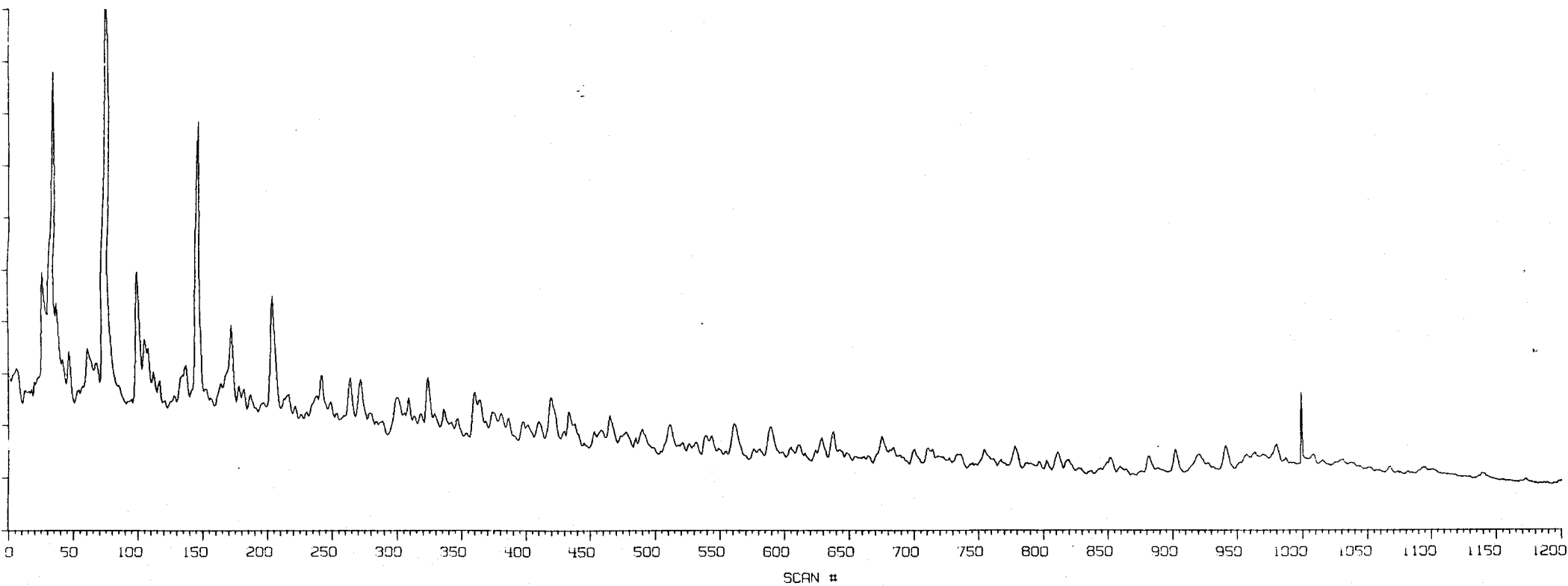
Triterpanes of Sample K819 (Well 34/10-2)

major sterane/major triterpane ratio	ratio of $\frac{17 \text{ H C}_{29}}{17 \text{ H C}_{30}}$	Comments
2.9	0.55	no C ₂₈ triterpane

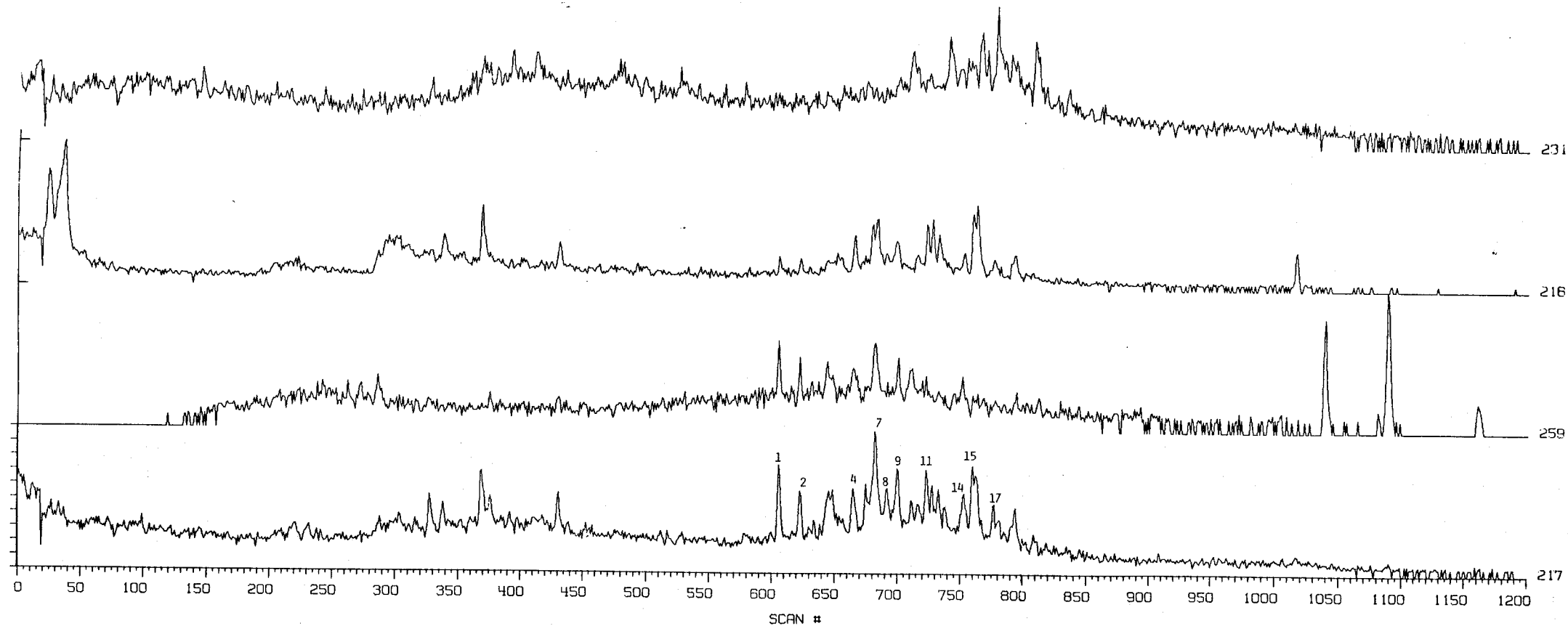
IKU OIL WELL 2 K 819 (Well 34/10-2)

TIC x 1

100 ?



IKU OIL WELL 2 K 819 (WELL 34/10 - 2)



IKU OIL WELL 2 K 819 (Well 34/10-2)

M/E 191 x 548

