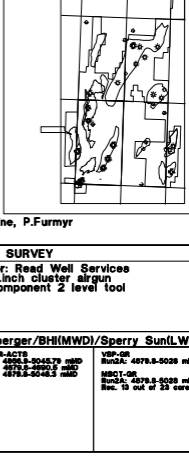


WELL 5406/1-1  
COMPOSITE LOG  
1 : 500

PROJECT STRUCTURE: Erlend

AREA: Haltenbanken  
LICENSE: PL25  
COORDINATES: 64° 45' 31.34" N  
08° 22' 54.69" E  
KB: 24 m MSL  
WATER DEPTH: 345 m  
TOTAL DEPTH: 5057 m  
FM AT T.D.: Are Fm  
SPUD DATE: 05-04-01  
RIG RELEASE: 11-08-01  
WELL STATUS: P & A  
RIG: Transocean Artic  
CONTRACTOR: Transocean ASA  
GEOLOGISTS: J.Basset, M.Helle, D.Orr, N.Millar, C.Ni Bhroin,  
L.Rasmussen, E.Nygaard, J.Gilpin, T.Svanå, P.Caine, P.Furmyr  
PREPARED BY: J.Basset / E.Nygaard



CASING DATA table with columns for depth, diameter, and material.

LEAK OFF TESTS table with columns for depth, pressure, and volume.

VELOCITY SURVEY table with columns for depth, velocity, and tool type.

LOGS RUN table listing well runs and their depths.

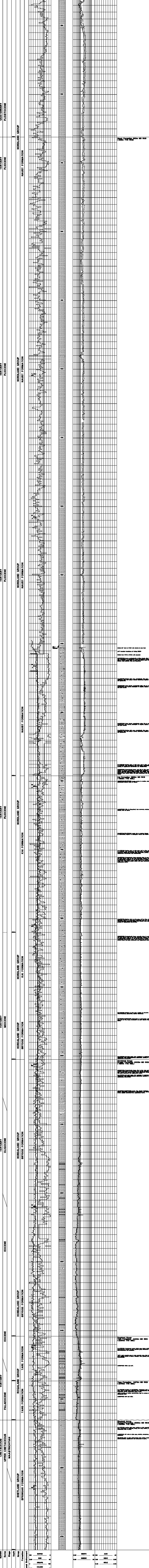
CONTRACTORS: Schlumberger/BH(MWD)/Sperry Sun(LWD) table listing various well runs and their depths.

COMMENTS: - Drilled 26" hole to 1415 mMD with seawater and returns to seafloor.  
- No shallow gas observed.  
- No GR in 26" hole due to faulty sensor  
- Drilled 17 1/2" hole with WBM down to 3016 mMD.  
- Drilled 12 1/4" and 8 1/2" holes with OBM.

MWD Run No.4 and No.5 by Sperry Sun, all others by Baker Hughes Inteq  
Core No.1 to No.5: Baker Hughes Inteq  
Core No.7: DBS/Security

LITHOLOGICAL SYMBOLS table defining symbols for various rock types and features.

Well Log header table with columns for Chron Strat, Litho Strat, System, Series, Stage, Depth, Group, Formation, Depositional Environment, and Lithological Descriptions.



Well Log header table (repeated) with columns for Chron Strat, Litho Strat, System, Series, Stage, Depth, Group, Formation, Depositional Environment, and Lithological Descriptions.