

NORWEGIAN PETROLEUM DIRECTORATE
NPD LOG U-211

COMPUTER INTERPRETATION

DEPTH IN: TRUE VERTICAL DEPTH:
METER

LOG INPUT: FDC/CNL-DLL + coredata

COMPANY: STATOIL

WELL NR: 34/10-3

FIELD: GULLBLOKKEN

DATE PROCESSED: MARS 79 DATE LOGGED: 4/5-79

FDC - Core - correlation

LOG ANALYST: T. Heidegø

ELEV. 255m

Field Recording	Engineer	Location	Analyst
Office Recording	Comp. Center	RIDS	Program No. S 1104 NPD
Mud Measurements	Rm	Rm	BHT 71°C

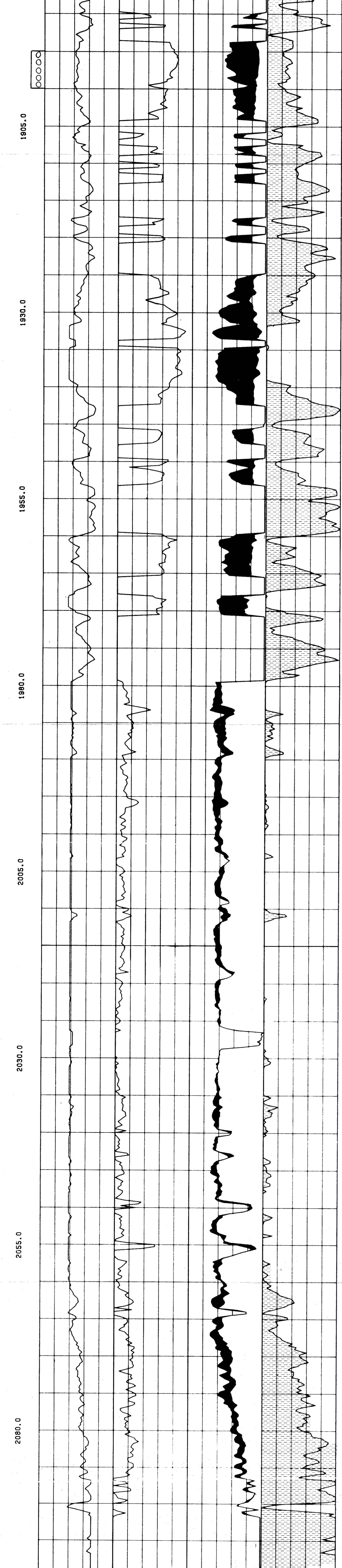
COMPUTATION PARAMETERS												
Depth Interval	From	To	Rw	Rmf	Ril	αcl	αnl	bcl	n	T	GR _{min}	GR _{max}
1885.	1979.		0.05	0.12	1.5				0.8	71°C	30	66
1979.	2100.		0.055	0.12	1.5				0.8	71°C	30	66

Remarks

$\phi = 2.67 - \log / 1.85$ fra 1885. - 1979.

$\phi = 2.69 - \log / 1.72$ fra 1979. - 2100.

$F = 0.92 / \phi^{2.18}$



TESTRESULTATER

- DST 1 intervall 1990 - 1995 m
2600 BOPD (20/64" choke), vannanalyse 27000 ppm CL-
stabilisert bunnhulstrykk 4568 psia
- DST 2 intervall 1935 - 1940 m
2838 BOPD (20/64" + 14/64" choke) GOR 409 SCF/BBL
ø olje = 0,88 g/cc sandproduksjon BHP = 4415 psia
- DST 3 intervall 1895 - 1900 m
1150 STBOPD (12/64" choke) wellhead pressure 1966 - 1655
gravity oil 29° API
stor sandproduksjon stoppet testen.

HOR. PERMEABILITY (MD) KL

