



NORSKE CONOCO A.S.

COMPOSITE WELL LOG



Statoil, Fortum Petroleum

WELL: 65077-13A (PL095)

LOCATION :

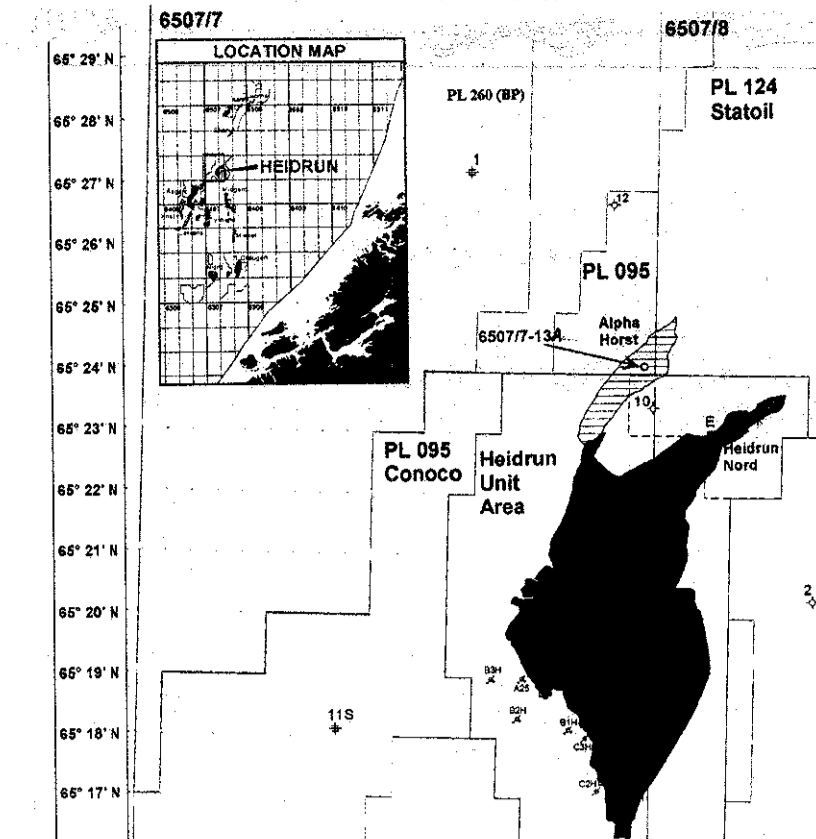
Latitude: 65° 24' 04.522"N
Longitude: 07° 19' 49.201"E

Country : Norway
Area : Norwegian Sea
Licence : PL 095
Field : Exploration
Date Spudded : 08.01.2001
TD Date : 14.01.2001
Date Completed : 22.01.2001 (13/13A)
Completion Status : P & A as oil discovery.

ELEVATIONS :

RT- Mean Sea Level : 23m
Water Depth : 381m
RT- Sea Floor : 404m
Total Depth - Driller : 2522m MD, 2496m TVD SS

LOCATION MAP



GEOLOGISTS

A. Scholze (Aker Geo)
R. Ree (Aker Geo)
Ø. Eikfjet (Aker Geo)

ELECTROPHYSICAL LOGS

Table with columns: TYPE, RUN NO, INTERVAL. Contains data for 3D VSP and 1B 1C logs.

PLUG NO

Table with columns: INTERVAL, PURPOSE. Shows plug intervals and their purposes.

MUDLOG SERVICE

Sperry Sun

MWD LOGGING SERVICE

Schlumberger Anadrill

WIRELINE LOGGING SERVICE

Schlumberger Wireline

RIG

Mærsk Jutlander

MUD TYPE

Table with columns: MUD TYPE, INTERVAL. Shows KCl/polymer mud type and kickoff interval.

BIT SIZE

Table with columns: BIT SIZE, BIT INTERVAL. Shows bit sizes (38", 17 1/2", 12 1/4", 8 1/2") and corresponding intervals.

CASING DETAILS

Table with columns: SIZE, SHOE DEPTH. Lists casing sizes and depths.

WELLSITE CORE DATA

Table with columns: CORE NO, INTERVAL, CUT, REC, REC%, TYPE. Lists core data.

CORE DATA CORRECTED TO GR LOG

Table with columns: CORE NO, INTERVAL, DEPTH SHIFT. Lists corrected core data.

PREPARED BY :

Jan Stenløkk, NCAS

REMARKS

65077-13 drilled to TD of 2623 m MD (2600 m TVD MSL). The well terminated in Are Formation, dated to Upper Triassic. A planned sidetrack (65077-13A) for coring the reservoir in event of hydrocarbons, were successfully performed, and 3 cores were taken in the Are Fm.
A definitive oil-water contact is not seen from resistivity data in the well due to coal, silt and shale below the oil-down-to (ODT) observed at the base of a sand at 2492.5m MD (-2469.5m TVDSS. MDT pressure data suggest an OWC may be expected near 2500m MD (-2477m TVDSS)
The well was permanently plugged and abandoned as an oil discovery.

APPROVED :

Matthew Reppert

DATE :

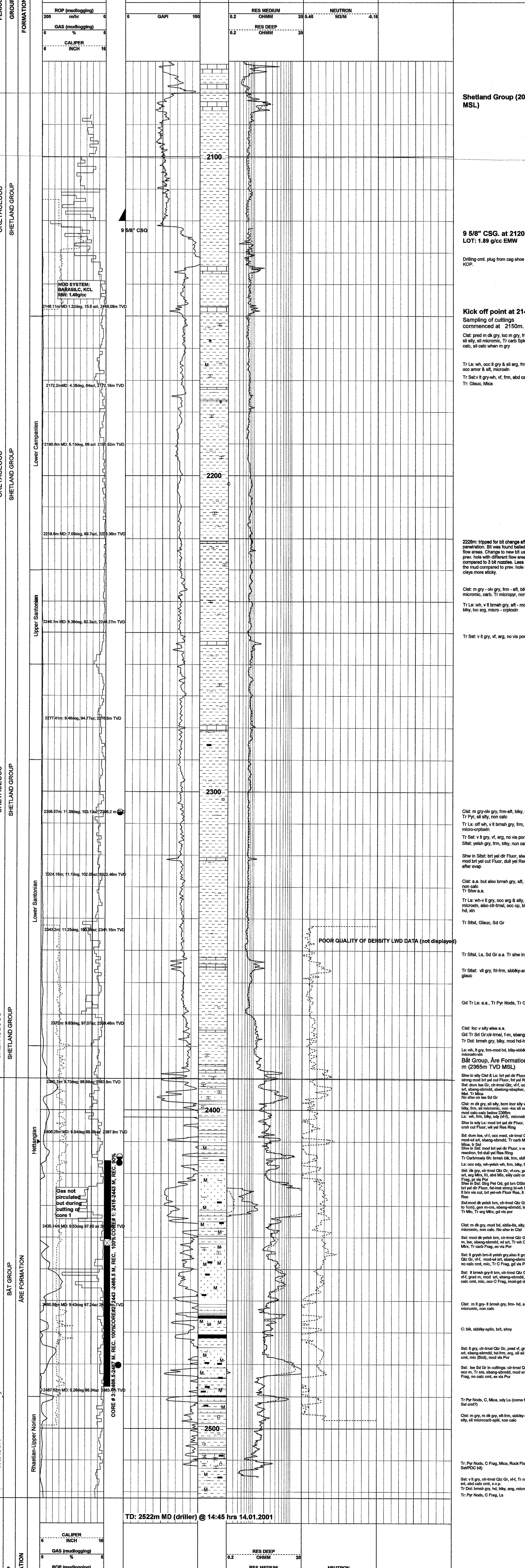
June 2001

MAIN LITHOLOGICAL SYMBOLS

Table of lithological symbols including shale, sandstone, limestone, dolomite, etc.

SECONDARY LITHOLOGICAL SYMBOLS

Table of secondary lithological symbols including argillaceous, arenaceous, carbonaceous, etc.



Shetland Group (2057m MSL)

9 5/8" CSG. at 2120 m
LOT: 1.89 g/cc EMW

Kick off point at 2148m
Sampling of cuttings commenced at 2150m.

2220m: tripped for bit change after poor penetration. Bit was found wedged up in 3 flow areas. Change to new bit used in 3 prev. holes with different flow areas and 6 compared to 3 bit nozzles. Less silica in the mud compared to prev. hole made the clogs more sticky.

POOR QUALITY OF DENSITY LWD DATA (not displayed)

Båt Group, Are Formation 2390 m (2365m TVD MSL)

TD: 2522m MD (driller) @ 14:45 hrs 14.01.2001