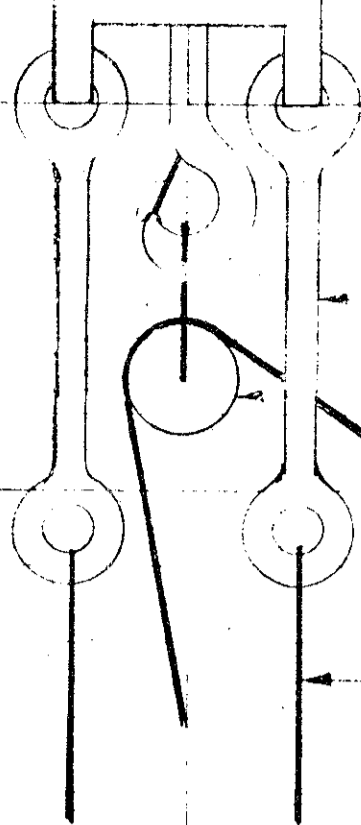
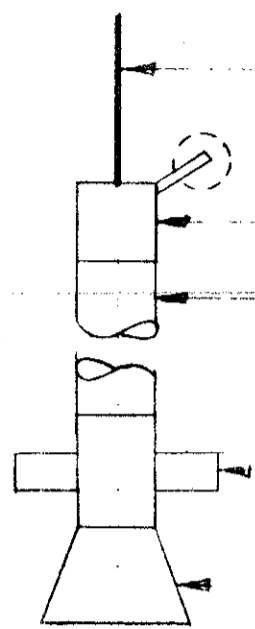


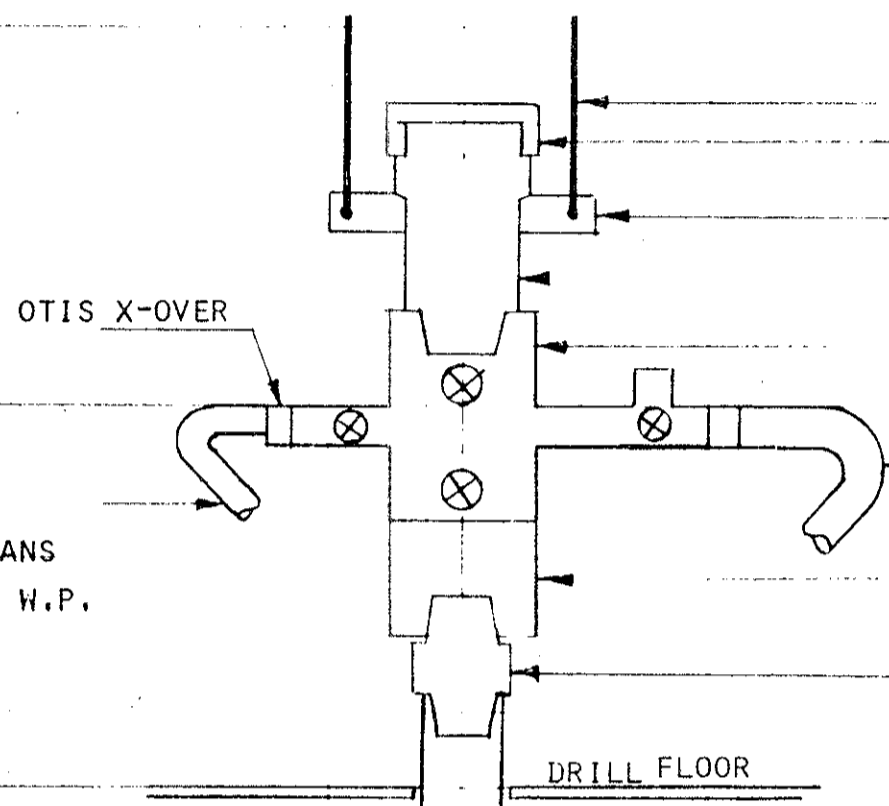
WELL 34/10-4 UPPER PART OF THE WELL TEST STRING ASSEMBLY.



- ROSS RIG ELEVATOR LINKS
- OTIS "HAY PULLI"
- OTIS WIRE LINE
- ROSS RIG WIRE SLINGS



- OTIS WIRE LINE
- OTIS STUFFING BOX
- OTIS LUBRICATOR (OPTIONAL)
- OTIS WIRELINE BOP
- OTIS X-OVER 3 1/2" X 6 1/2" Q.U.



KILL LINE
2" CHICKSANS
10000 PSI W.P.

- ROSS RIG WIRE SLINGS/ELEVATOR LINKS
- OTIS BLANK OFF, 6 1/2" QUICK UNION
- ROSS RIG, 5" DP ELEVATOR
- OTIS HANDLING SUB, 5", 5 FT LONG
- OTIS CONTROL HEAD, 4 3/8" ACME BOX X BOX
- OTIS 3" CHICKSANS 6000 PSI WORKING PRES.
- OTIS LT 20 SWIVEL
- STATOIL X-OVER, 4 3/8", 6 STUB HALL, ACME PIN X 3 1/2" TDS PIN
- DRILL FLOOR
- STATOIL TUBING, 3 1/2", 12.70 LB/FT, N 80MOD, MANNESMANN TDS, 2 JOINTS
- STATOIL X-OVER, 3 1/2" TDS BOX X 4 1/2" OTIS ACME PIN
- OTIS LUBRICATOR VALVE, 4 1/2" OTIS ACME BOX X PIN
- STATOIL X-OVER, 4 1/2" OTIS ACME BOX X 3 1/2" TDS PIN
- STATOIL 3 1/2" TDS TUBING
- STATOIL X-OVER, 3 1/2" TDS BOX X 4 1/2" ACME PIN
- OTIS SUB SEA TEST THREE
- 3 1/2" OD RAM LOCK, 18" LONG FOR MPR
- OTIS SLICK JOINT 19.852" LONG
- OTIS FLUTED HANGER
- OTIS X-OVER 4 1/2" OTIS ACME PIN X 3 1/2" TDS PIN
- ROSS RIG 3 1/2" OD, 12.70 LB/FT, 3 1/2" TDS TUBING