



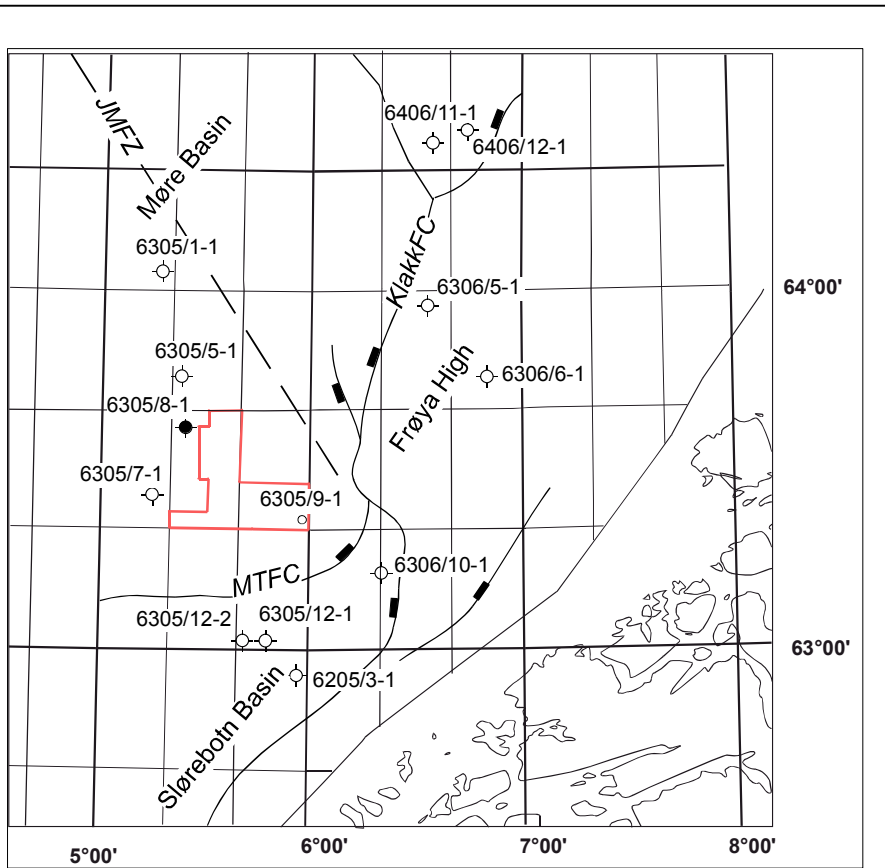
Composite log

Blåveis

Scale: 1 / 500

Well: 6305/9-1

Location Map



KB Elevation 24 m
Water Depth 187 m MSL (211m RKB)
Depth Reference RKB

Country Norway
Licence PL252

Total Depth (Driller) 2655m
2654.3m

Owners Norsk Hydro, Chevron, RWE-DEA

Total Depth (Logger) 2655.5m
2654.8m

Field Blåveis
Platform Transocean Arctic

Formation at Total Depth Springar

Date Spudded 2001-07-09
Date Reached TD 2001-07-23
Date Completed 2001-08-01
Well Status Plugged and abandoned

Drilling Contractor Transocean Offshore
Mudlogging Company Geoservices
Logging Company Schlumberger Wireline
MWD Company Schlumberger Anadrill

Well Classification Exploration

Geologists B.Schønningsen, C.Dons, E.Skottlien

Prepared by B.Schønningsen, C.Dons, E.Skottlien
Controlled by F.Johansen
Date 2001-07-23

Well Coordinates **FINAL COORDINATES:**
63Deg 17' 59.96" N 05 Deg 59' 14.63" E ED 50
7 022 673.7 mN 649 731.5 mE ED50-UTM sone 31
(SM 3 Deg East)

Winlog well ID : 6305_9_1
Winlog template version : 20010309 - AJC

Casing Records

LOT / FIT

Comments

Diameter	Shoe depth m MD RKB	Shoe depth m TVD RKB
30" Casing shoe	272	272
20" Casing shoe	674.7	674.7
9 5/8" Casing shoe	2295	2295

Type	Result SG	Depth m MD RKB	Depth m TVD RKB

Comments			

Logs

Cores

Pressure points (MDT)

Run no.	Log type	Logged interval
1	MWD-DIR (Directional only)	210 - 274 m
2	MWD-CDR	267 - 671m
3	MWD-CDR-ISONIC	674 - 2305m
4	LWD-GEOVISION (RAB)-ADN	2305 - 2477m
5	LWD-RAB-ADN	2477 - 2566m
WIRELINE LOGGING		
1A	MDT	2474 - 2548m
1A	DSI-VSP	1790 - 2655,5m
1A	MSCT	2340 - 2650m

Core no.	Cored interval m MD RKB	Recovered interval m MD RKB	Rec. mMD	Rec. %
1	2477.0 2495.0	2477.0 2494.4	17.4	96.7

Test no.	Depth m MD RKB	Depth m TVD RKB	Fmn. Press. Bar Bars
1	2548.0	2547.4	251.82
2	2523.0	2522.4	249.38
3	2514.0	2513.4	248.49
4	2505.0	2504.4	247.63
5	2492.0	2491.4	246.37
6	2482.0	2481.4	345.41
7	2474.0	2473.4	244.70

Lithology Legend

Symbol legend

CONGLOMERATE	LIMESTONE	ANHYDRITE	... SANDY, VERY	C CARBONACEOUS MAT.
SAND/SANDSTONE	DOLOMITE	SALT	.. SANDY	Δ CHERT
SILT/SILTSTONE	DOL. LIMESTONE	GYPSUM	. SANDY, SLIGHTLY	* GLAUCONITE
CLAY/CLAYSTONE	CALC. DOLOMITE	TUFF	SILTY, VERY	M MICA
SHALE	CHALK	INTR. IGNEOUS	SILTY	□ PYRITE
MARL	EXTR. IGNEOUS	ARGILLACEOUS	SILTY, SLIGHTLY	v TUFFACEOUS
CEMENT: QUARTZ	MACROFOSSILS	CALCAREOUS	q CEMENT: QUARTZ	δ MACROFOSSILS
CEMENT: CARBONATE	MACROFOSSILS FRAG	CEMENT: KAOLINITE	k CEMENT: KAOLINITE	∅ MICROFOSSILS

Casing shoe	Liner hanger	Liner shoe	Deviation survey - MWD	Deviation survey - Other	Core interval	Sidewall core	(No recovery)
DST	SHOWS	Open hole	Open hole (rerun)	Through casing	Through casing (rerun)	Perforation interval	RFT / MDT
Oil stain	Fluorescence	Visible cut	Fluorescence cut	Gas shows			

Quaternary
Pleistocene

Tertiary
Pliocene

Tertiary
Pliocene

Nordland

Nordland

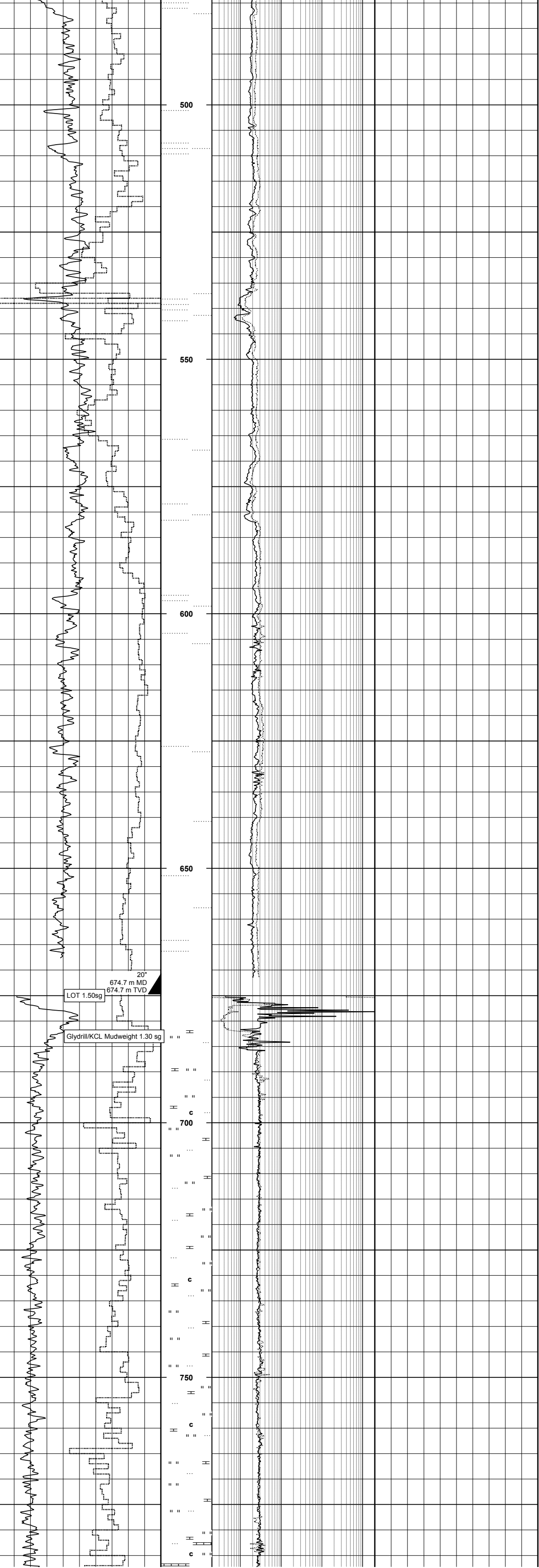
Nordland

Naust

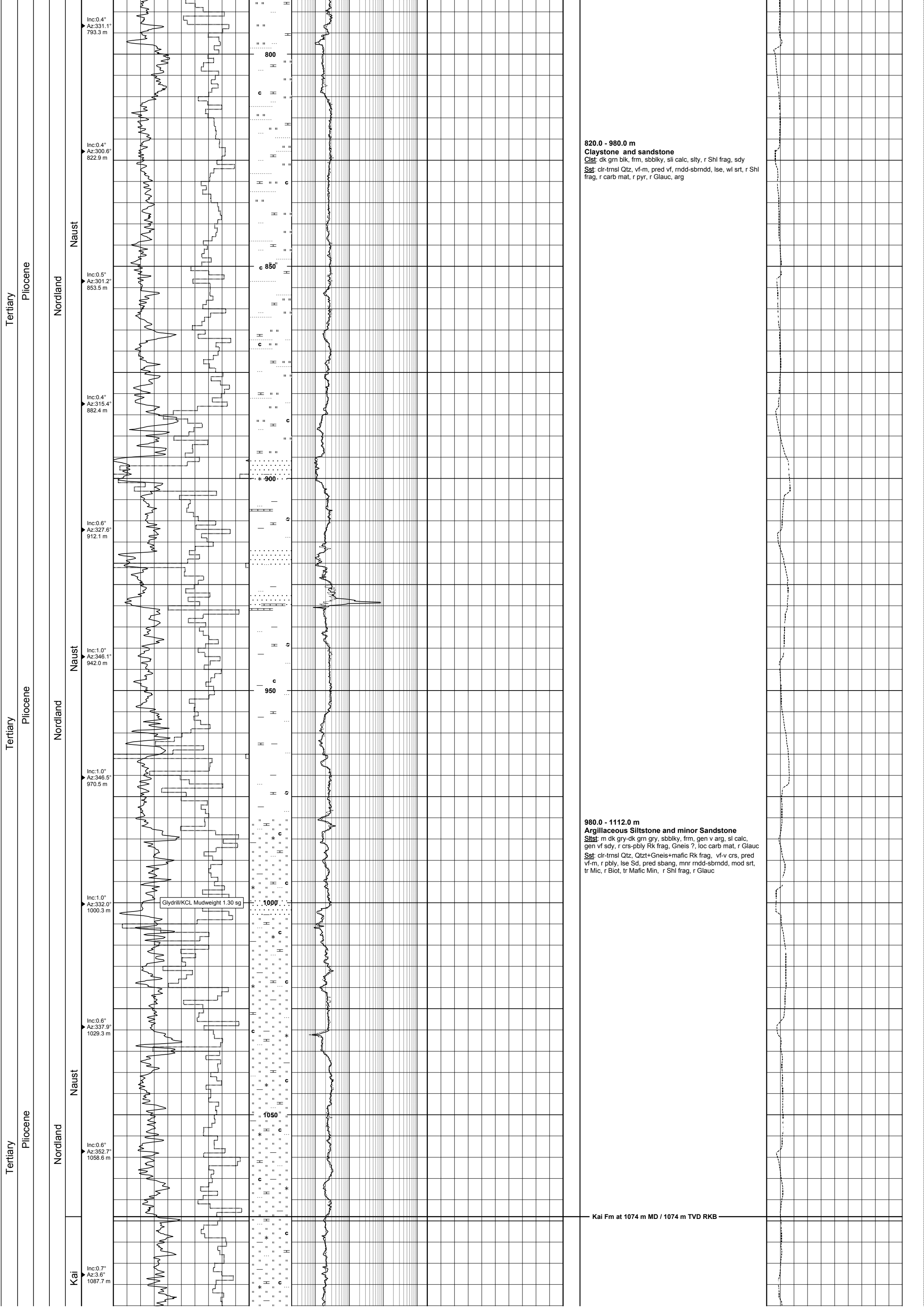
Naust

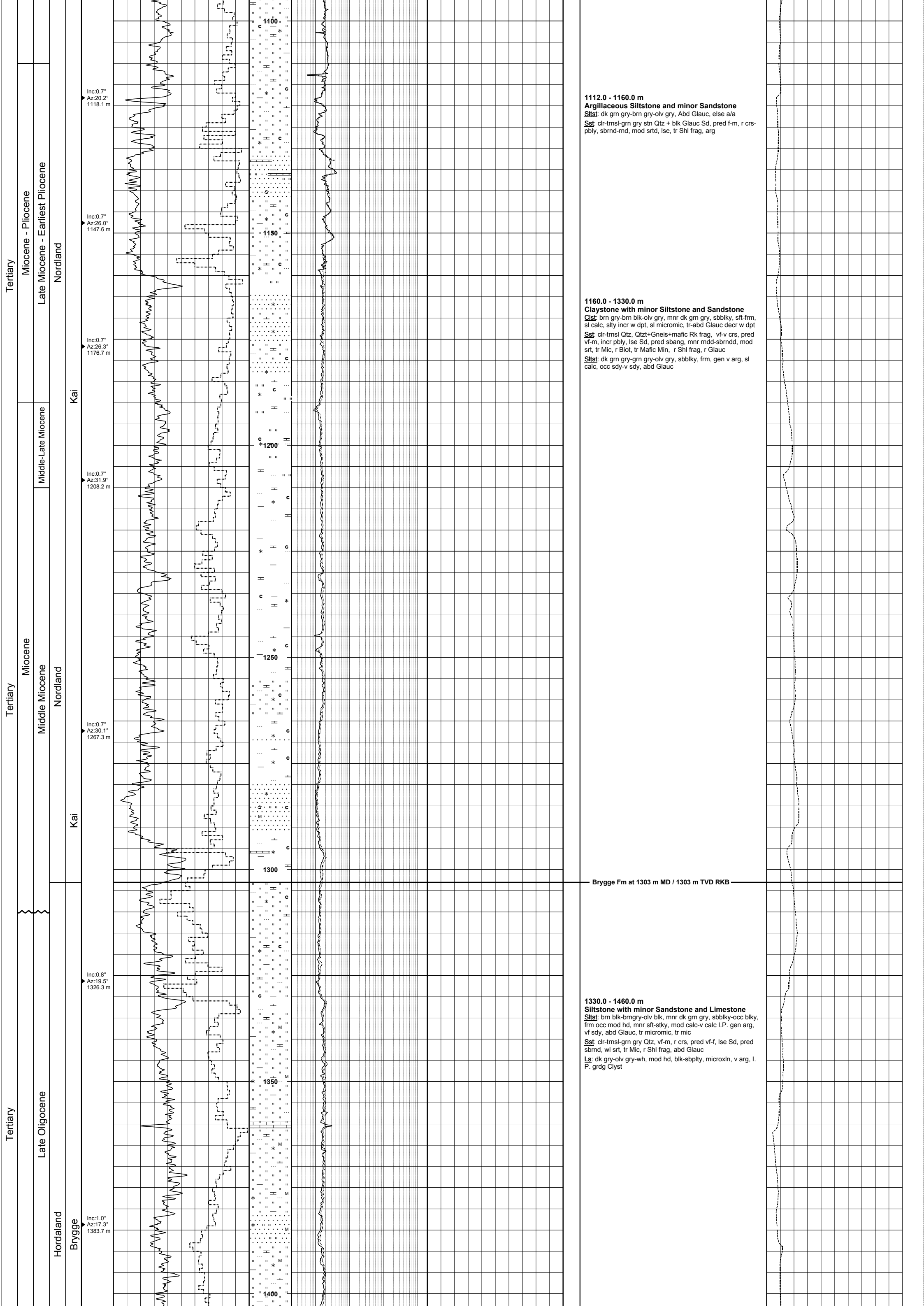
Naust

Inc:0.0° Az:258.7° 500.1 m
Inc:0.1° Az:282.0° 529.4 m
Inc:0.2° Az:263.1° 559.9 m
Inc:0.1° Az:291.2° 588.6 m
Inc:0.1° Az:274.6° 618.3 m
Inc:0.2° Az:300.0° 647.2 m
Inc:0.5° Az:291.8° 661.3 m
Inc:0.5° Az:292.9° 706.7 m
Inc:0.5° Az:286.2° 735.0 m



680.0 - 820.0 m
Claystone and sandstone
Cst: dk gry-m dk gry, gm blk, sft-fm, sbbky, r carb mat, sli calc, sli sily, r sdy
Sst: clr-trnsl Qtz, vf-crs, r v crs, mdd-sbrndd, pr srt, lse, r Shi frag, r carb mat, r pyr





Tertiary
Miocene - Pliocene
Late Miocene - Earliest Pliocene
Nordland

Middle-Late Miocene
Kai

Miocene
Middle Miocene
Nordland

Kai

Tertiary
Late Oligocene
Hordaland
Brygge

Inc:0.7° Az:20.2° 1118.1 m
Inc:0.7° Az:26.0° 1147.6 m
Inc:0.7° Az:26.3° 1176.7 m
Inc:0.7° Az:31.9° 1208.2 m
Inc:0.7° Az:30.1° 1267.3 m
Inc:0.8° Az:19.5° 1326.3 m
Inc:1.0° Az:17.3° 1383.7 m

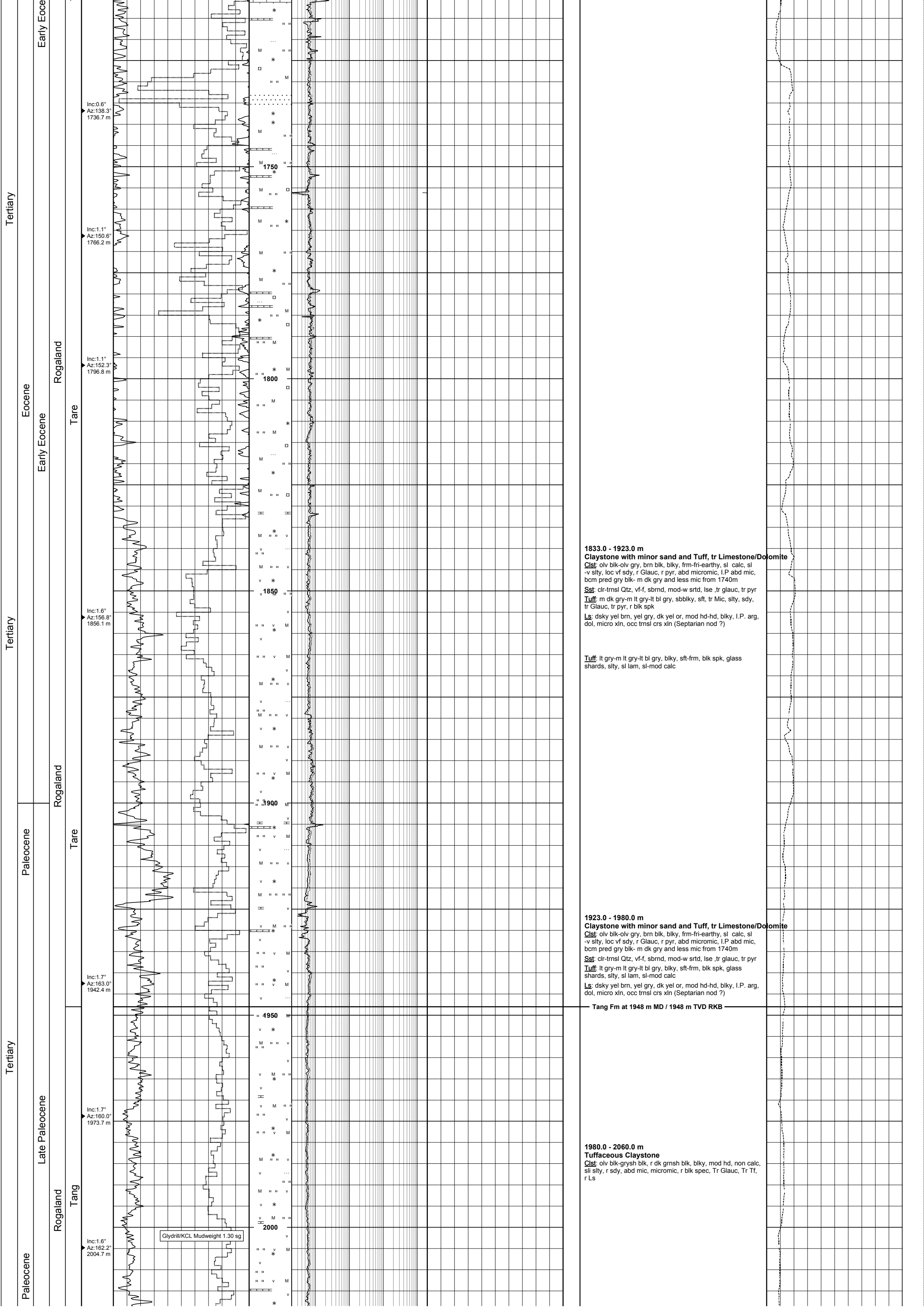
1100
1150
1200
1250
1300
1350
1400

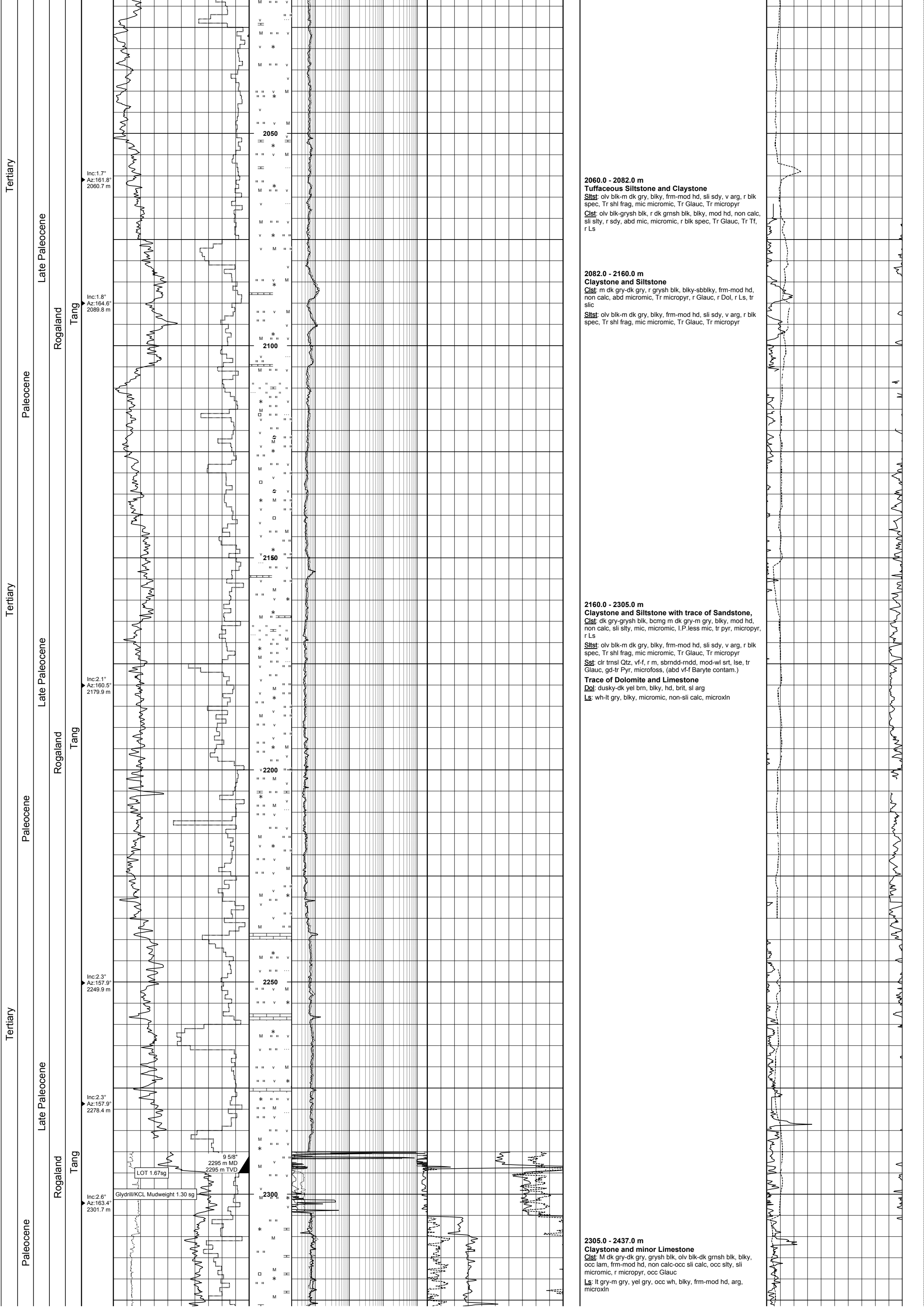
1112.0 - 1160.0 m
Argillaceous Siltstone and minor Sandstone
Siltst: dk gm gry-brn gry-olv gry, Abd Glauc, else a/a
Sst: clr-trnsl-gm gry stn Qtz + blk Glauc Sd, pred f-m, r crs-pbly, sbmnd-rnd, mod srt, lse, tr Shl frag, arg

1160.0 - 1330.0 m
Claystone with minor Siltstone and Sandstone
Clst: brn gry-brn blk-olv gry, mnr dk gm gry, sbbiky, sft frm, sl calc, sity incr w dpt, sl micromic, tr-abd Glauc decr w dpt
Sst: clr-trnsl Qtz, Qtz+Gneis+mafic Rk frag, vf-v crs, pred vf-m, incr pbly, lse Sd, pred sbang, mnr mdd-sbmnd, mod srt, tr Mic, r Biot, tr Mafic Min, r Shl frag, r Glauc
Siltst: dk gm gry-grn gry-olv gry, sbbiky, frm, gen v arg, sl calc, occ sdy-v sdy, abd Glauc

Brygge Fm at 1303 m MD / 1303 m TVD RKB

1330.0 - 1460.0 m
Siltstone with minor Sandstone and Limestone
Siltst: brn blk-brngry-olv blk, mnr dk gm gry, sbbiky-occ blk, frm occ mod hd, mnr sft-stky, mod calc-v calc I.P. gen arg, vf sdy, abd Glauc, tr micromic, tr mic
Sst: clr-trnsl-gm gry Qtz, vf-m, r crs, pred vf-f, lse Sd, pred sbmnd, wl srt, tr Mic, r Shl frag, abd Glauc
Ls: dk gry-olv gry-wh, mod hd, blk-sbply, microxn, v arg, l. P. grdg Clyst





Tertiary

Late Paleocene

Rogaland

Paleocene

Tertiary

Late Paleocene

Rogaland

Paleocene

Tertiary

Late Paleocene

Rogaland

Paleocene

Inc:1.7°
Az:161.8°
2060.7 m

Inc:1.8°
Az:164.6°
2089.8 m

Inc:2.1°
Az:160.5°
2179.9 m

Inc:2.3°
Az:157.9°
2249.9 m

Inc:2.3°
Az:157.9°
2276.4 m

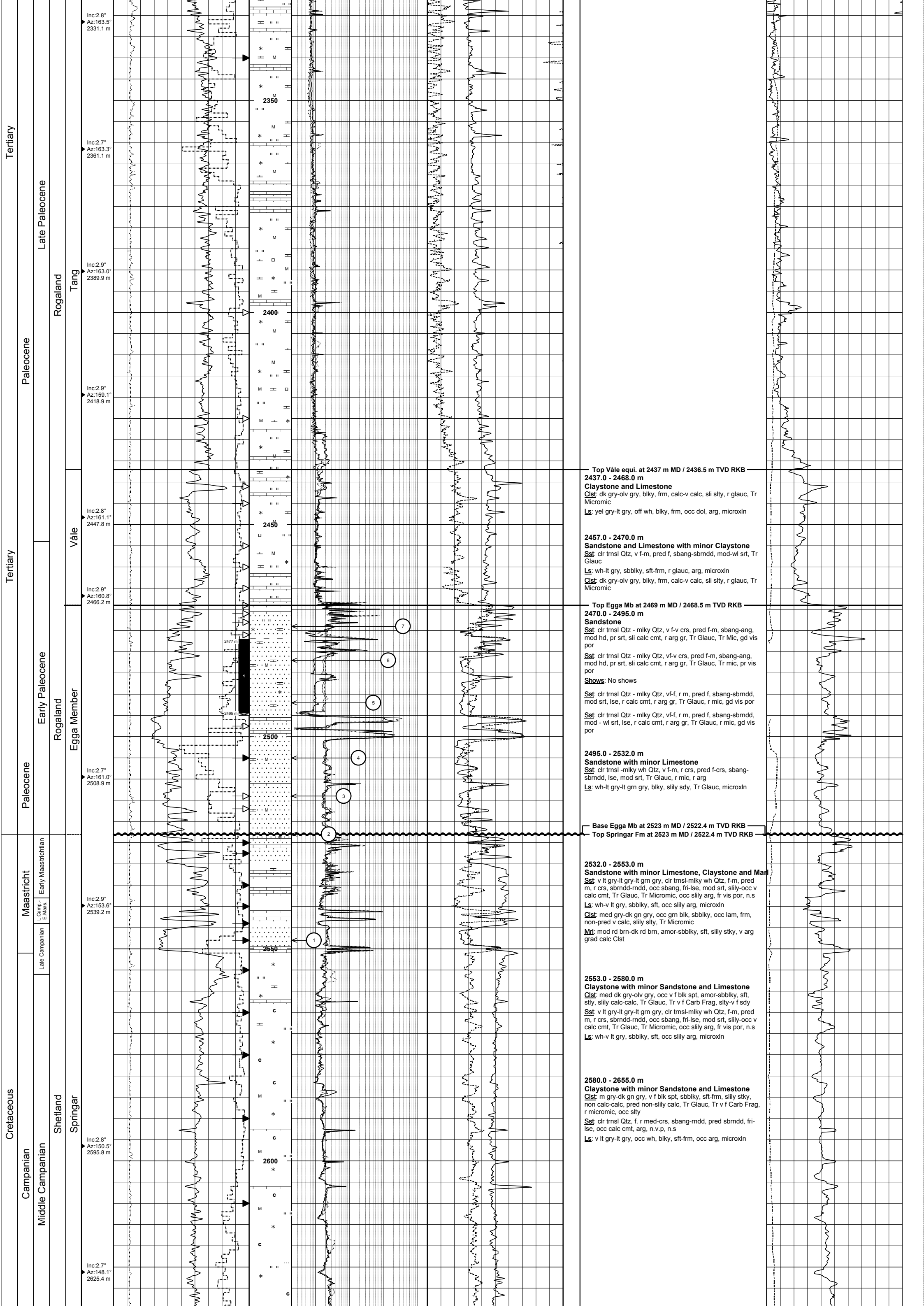
Inc:2.6°
Az:163.4°
2301.7 m

9 5/8"
2295 m MD
2295 m TVD

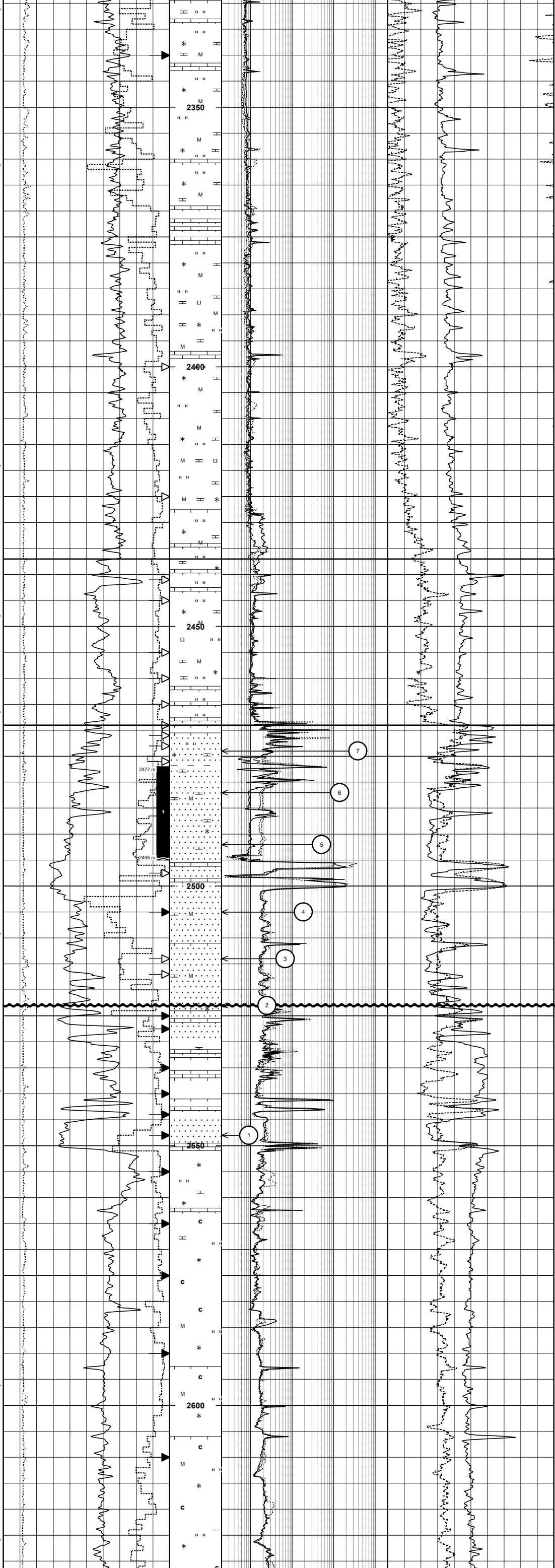
LOT 1.67sg

Glydrill/KCL Mudweight 1.30 sg

2050
2100
2150
2200
2250
2300



Inc: 2.8° Az: 163.5° 2331.1 m
 Inc: 2.7° Az: 163.3° 2361.1 m
 Inc: 2.9° Az: 163.0° 2389.9 m
 Inc: 2.9° Az: 159.1° 2418.9 m
 Inc: 2.8° Az: 161.1° 2447.8 m
 Inc: 2.9° Az: 160.8° 2466.2 m
 Inc: 2.7° Az: 161.0° 2508.9 m
 Inc: 2.9° Az: 153.6° 2539.2 m
 Inc: 2.8° Az: 150.5° 2595.8 m
 Inc: 2.7° Az: 148.1° 2625.4 m



Top Våle equi. at 2437 m MD / 2436.5 m TVD RKB
2437.0 - 2468.0 m
Claystone and Limestone
 Clst: dk gry-olv gry, blk, frm, calc-v calc, sli slty, r glauc, Tr Micromic
 Ls: yel gry-lt gry, off wh, blk, frm, occ dol, arg, microxin

2457.0 - 2470.0 m
Sandstone and Limestone with minor Claystone
 Sst: clr trnsl Qtz, v f-m, pred f, sbang-sbrndd, mod-wl srt, Tr Glau
 Ls: wh-lt gry, sbbly, sft-frm, r glauc, arg, microxin
 Clst: dk gry-olv gry, blk, frm, calc-v calc, sli slty, r glauc, Tr Micromic

Top Egga Mb at 2469 m MD / 2468.5 m TVD RKB
2470.0 - 2495.0 m
Sandstone
 Sst: clr trnsl Qtz - mlky Qtz, v f-v crs, pred f-m, sbang-ang, mod hd, pr srt, sli calc cmt, r arg gr, Tr Glau, Tr Mic, gd vis por
 Sst: clr trnsl Qtz - mlky Qtz, vf-v crs, pred f-m, sbang-ang, mod hd, pr srt, sli calc cmt, r arg gr, Tr Glau, Tr mic, pr vis por
 Shows: No shows
 Sst: clr trnsl Qtz - mlky Qtz, vf-f, r m, pred f, sbang-sbrndd, mod srt, lse, r calc cmt, r arg gr, Tr Glau, r mic, gd vis por
 Sst: clr trnsl Qtz - mlky Qtz, vf-f, r m, pred f, sbang-sbrndd, mod - wl srt, lse, r calc cmt, r arg gr, Tr Glau, r mic, gd vis por

2495.0 - 2532.0 m
Sandstone with minor Limestone
 Sst: clr trnsl-mlky wh Qtz, v f-m, r crs, pred f-crs, sbang-sbrndd, lse, mod srt, Tr Glau, r mic, r arg
 Ls: wh-lt gry-lt grn gry, blk, slily sdy, Tr Glau, microxin

Base Egga Mb at 2523 m MD / 2522.4 m TVD RKB
Top Springar Fm at 2523 m MD / 2522.4 m TVD RKB

2532.0 - 2553.0 m
Sandstone with minor Limestone, Claystone and Mar
 Sst: v lt gry-lt gry-lt grn gry, clr trnsl-mlky wh Qtz, f-m, pred m, r crs, sbrndd-mdd, occ sbang, fri-lse, mod srt, slily-occ v calc cmt, Tr Glau, Tr Micromic, occ slily arg, fr vis por, n.s
 Ls: wh-v lt gry, sbbly, sft, occ slily arg, microxin
 Clst: med gry-dk gn gry, occ gn blk, sbbly, occ lam, frm, non-pred v calc, slily slty, Tr Micromic
 Mrl: mod rd brn-dk rd brn, amor-sbbly, sft, slily stky, v arg grad calc Clst

2553.0 - 2580.0 m
Claystone with minor Sandstone and Limestone
 Clst: med dk gry-olv gry, occ v f blk spt, amor-sbbly, sft, slty, slily calc-calc, Tr Glau, Tr v f Carb Frag, slty-v f sdy
 Sst: v lt gry-lt gry-lt grn gry, clr trnsl-mlky wh Qtz, f-m, pred m, r crs, sbrndd-mdd, occ sbang, fri-lse, mod srt, slily-occ v calc cmt, Tr Glau, Tr Micromic, occ slily arg, fr vis por, n.s
 Ls: wh-v lt gry, sbbly, sft, occ slily arg, microxin

2580.0 - 2655.0 m
Claystone with minor Sandstone and Limestone
 Clst: m gry-dk gn gry, v f blk spt, sbbly, sft-frm, slily stky, non calc-calc, pred non-slily calc, Tr Glau, Tr v f Carb Frag, r micromic, occ slty
 Sst: clr trnsl Qtz, f, r med-crs, sbang-mdd, pred sbrndd, fri-lse, occ calc cmt, arg, n.v.p, n.s
 Ls: v lt gry-lt gry, occ wh, blk, sft-frm, occ arg, microxin

SYSTEM		SERIES		STAGE		GROUP		FORMATION		DIRECTIONAL SURVEYS		LITHOLOGY		RESISTIVITY		NEUTRON/DENSITY		LITHOLOGICAL DESCRIPTION		SONIC			
																		TD at 2655 m MD / 2654.2 m TVD RKB					
STRATIGRAPHY		GAMMA RAY		RESISTIVITY		NEUTRON/DENSITY		LITHOLOGICAL DESCRIPTION		SONIC		0 GR api 150 6 BS in 26 200 ROP m/hr 0 6 CALI in 26		0.2 RS ohmm 2000 0.45 NPHI frac -0.15 0.2 RMS ohmm 2000 1.95 RHOB g/cc 2.95 0.2 RMD ohmm 2000 0.2 RD ohmm 2000		0 GAS % 10 140 DT us/ft 40							