

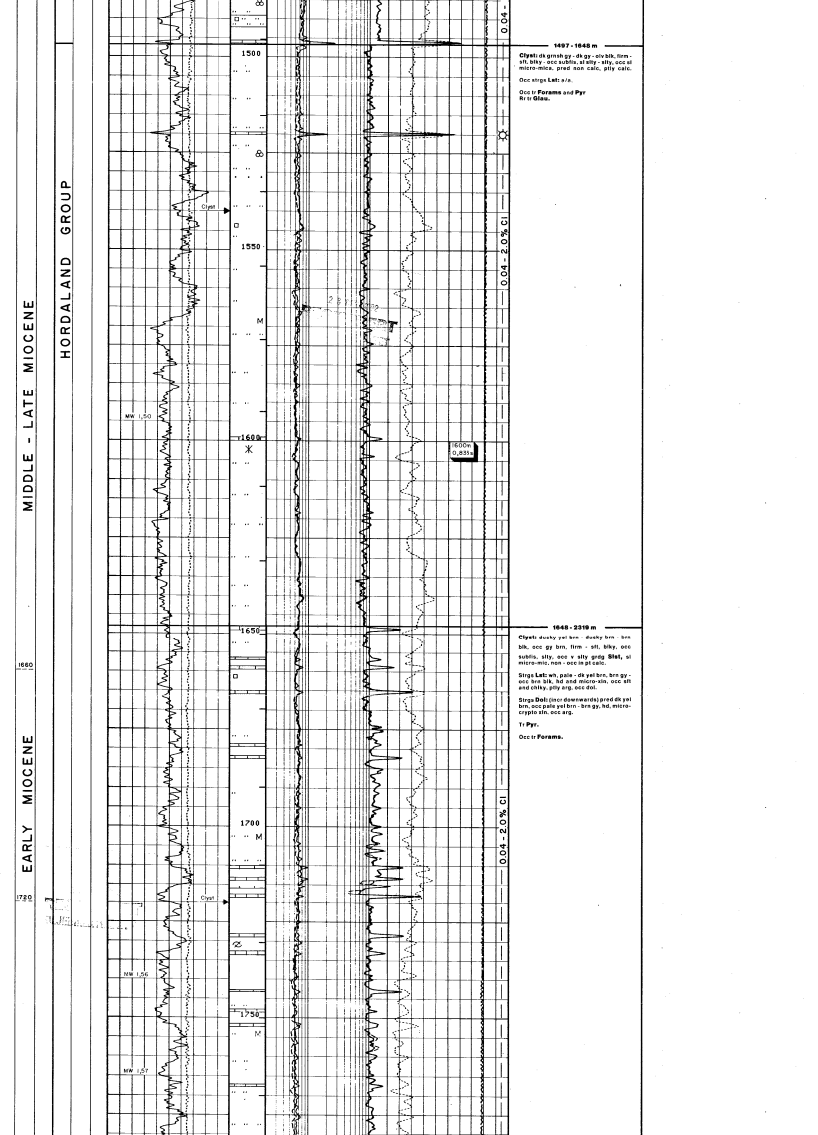
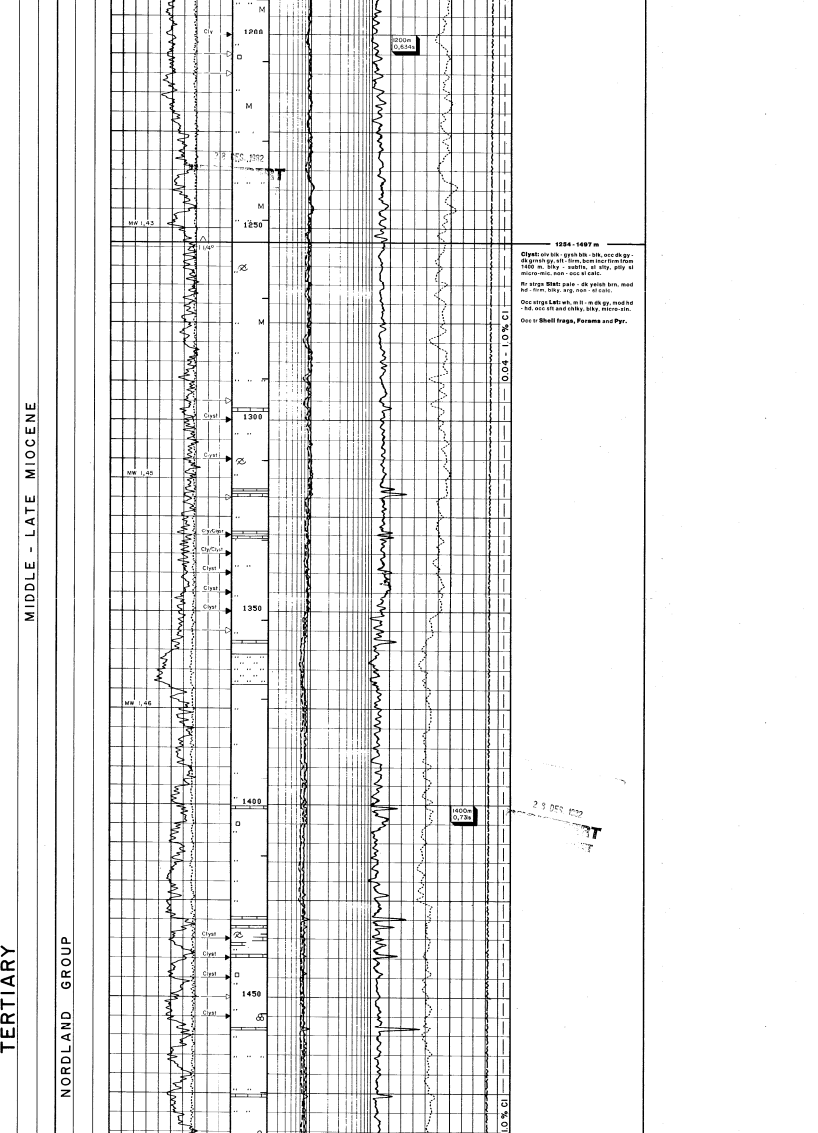
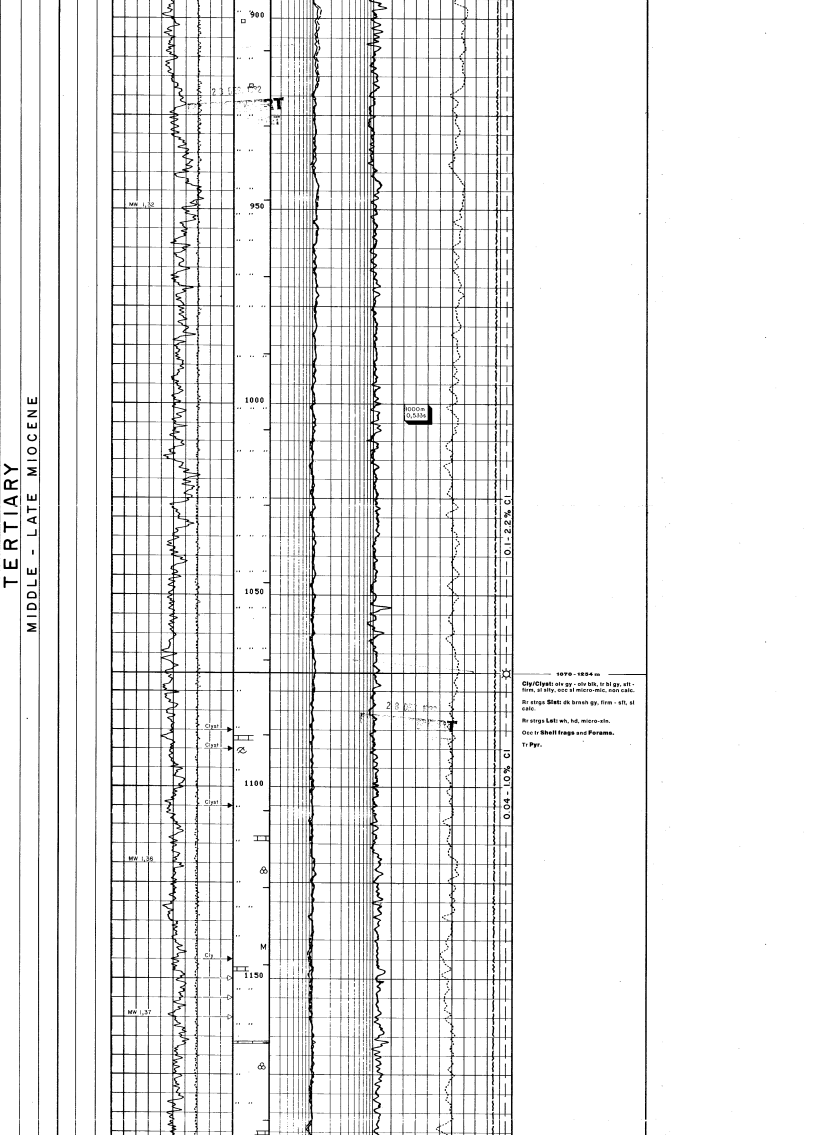
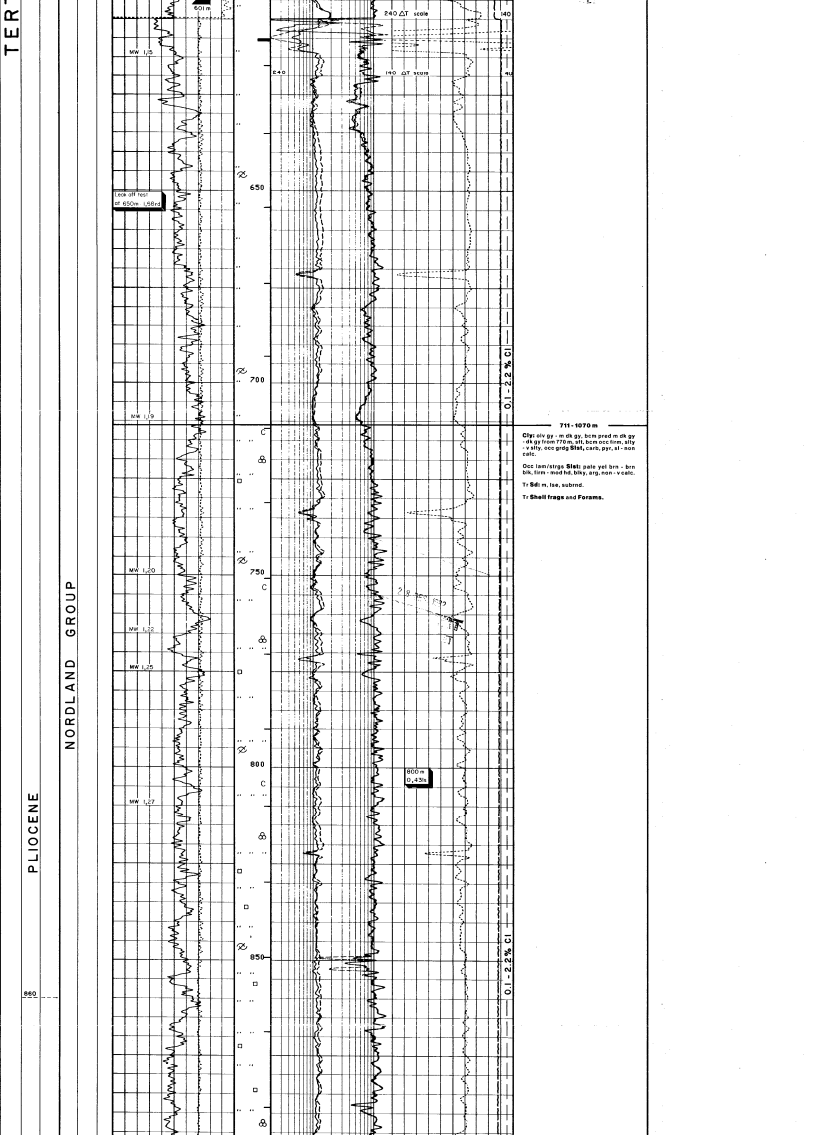
**Norsk Hydro** Completion log

**Well: 7/11-5**

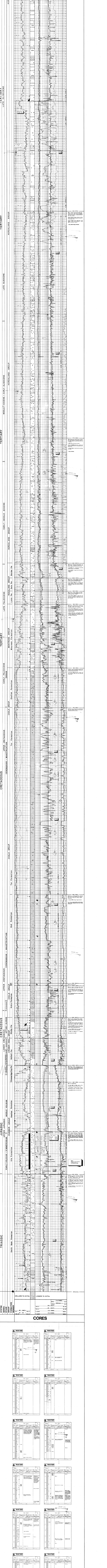
Well: 7/11-5  
 Zone: 1500 - 6528  
 License: OTS  
 Operator: Norsk Hydro, Statoil, MAOL, Omslag, Enge  
 Date Started: February 5, 1932  
 Maximum True Depth: 4478 m  
 Completion: May 10, 1932  
 Well Status: Producing oil and condensate with hydrocarbon bearing gas  
 Producing Formation: Gullfjellet  
 Rig: Teaters Taster  
 Control: Norsk Hydro  
 Logging Company: Geografisk Løyring  
 Loggers: H. V. A. Andersen, S. E. Stenberg, L. Lind, K. H. Kjær, F. F. Hennings, A. E. Hennings  
 Prepared by: J. E. Nielsen, J. E. Stenberg, J. E. Hennings, A. E. Hennings  
 Date: October 5, 1932

**Log Run**

Run	Start	End	Notes
1	0000	4478	Full depth log
2	4478	4478	Spot log



**CORES**



**LOG RESULTS**

Depth (m)	Pressure (bar)	Temperature (°C)	Gas Content (%)	Oil Content (%)
0	1.013	15.0	0.0	0.0
100	1.013	15.0	0.0	0.0
200	1.013	15.0	0.0	0.0
300	1.013	15.0	0.0	0.0
400	1.013	15.0	0.0	0.0
500	1.013	15.0	0.0	0.0
600	1.013	15.0	0.0	0.0
700	1.013	15.0	0.0	0.0
800	1.013	15.0	0.0	0.0
900	1.013	15.0	0.0	0.0
1000	1.013	15.0	0.0	0.0
1100	1.013	15.0	0.0	0.0
1200	1.013	15.0	0.0	0.0
1300	1.013	15.0	0.0	0.0
1400	1.013	15.0	0.0	0.0
1500	1.013	15.0	0.0	0.0
1600	1.013	15.0	0.0	0.0
1700	1.013	15.0	0.0	0.0
1800	1.013	15.0	0.0	0.0
1900	1.013	15.0	0.0	0.0
2000	1.013	15.0	0.0	0.0
2100	1.013	15.0	0.0	0.0
2200	1.013	15.0	0.0	0.0
2300	1.013	15.0	0.0	0.0
2400	1.013	15.0	0.0	0.0
2500	1.013	15.0	0.0	0.0
2600	1.013	15.0	0.0	0.0
2700	1.013	15.0	0.0	0.0
2800	1.013	15.0	0.0	0.0
2900	1.013	15.0	0.0	0.0
3000	1.013	15.0	0.0	0.0
3100	1.013	15.0	0.0	0.0
3200	1.013	15.0	0.0	0.0
3300	1.013	15.0	0.0	0.0
3400	1.013	15.0	0.0	0.0
3500	1.013	15.0	0.0	0.0
3600	1.013	15.0	0.0	0.0
3700	1.013	15.0	0.0	0.0
3800	1.013	15.0	0.0	0.0
3900	1.013	15.0	0.0	0.0
4000	1.013	15.0	0.0	0.0
4100	1.013	15.0	0.0	0.0
4200	1.013	15.0	0.0	0.0
4300	1.013	15.0	0.0	0.0
4400	1.013	15.0	0.0	0.0
4478	1.013	15.0	0.0	0.0

**DATA SUMMARY**

Well: 7/11-5  
 Date: October 5, 1932  
 Operator: Norsk Hydro, Statoil, MAOL, Omslag, Enge  
 License: OTS  
 Maximum True Depth: 4478 m  
 Completion: May 10, 1932  
 Well Status: Producing oil and condensate with hydrocarbon bearing gas  
 Producing Formation: Gullfjellet  
 Rig: Teaters Taster  
 Control: Norsk Hydro  
 Logging Company: Geografisk Løyring  
 Loggers: H. V. A. Andersen, S. E. Stenberg, L. Lind, K. H. Kjær, F. F. Hennings, A. E. Hennings  
 Prepared by: J. E. Nielsen, J. E. Stenberg, J. E. Hennings, A. E. Hennings  
 Date: October 5, 1932