

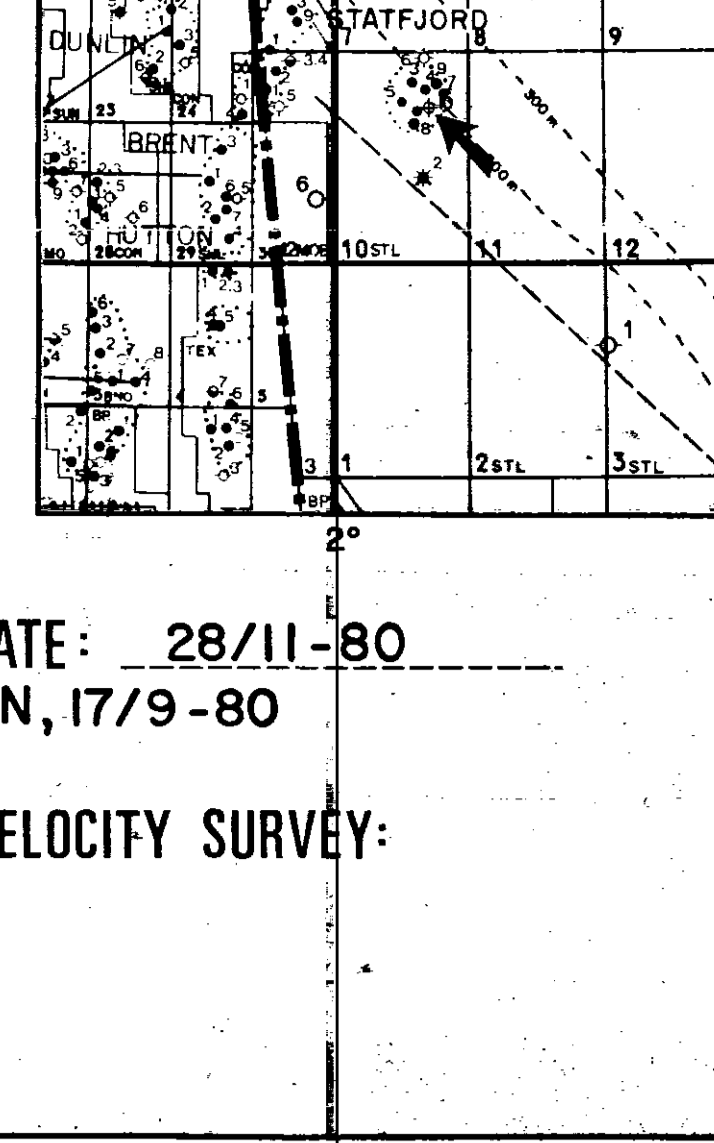
DIGITAL WIRELINE LOGS PACKAGE
 1994
 This image may not be used or reproduced
 without written permission from
 SIMON PETROLEUM TECHNOLOGY

COMPLETION LOG



statoil / Norsk Hydro / Saga Petroleum
34/10-10
COMPLETION LOG
 Scale 1:500

COORDINATES: 61° 10' 27.95" N
 02° 14' 43.12" E
 K.B.: 25 m
 WATER DEPTH: 154 m
 TOTAL DEPTH: 816 m
 DEEPEST FORM. PEN.: MIOCENE
 SPUD DATE: 15 AUGUST, 1980
 RIG RELEASE DATE: 6 OCTOBER, 1980
 WELL STATUS: PLUGGED AND ABANDONED
 RIG: NORSKALD / BORGNY DOLPHIN
 CONTRACTOR: ROWAN/DOLPHIN DRILLING CO.
 GEOLOGISTS: S. ELLIOTT, N. AYKROYD
 PREPARED BY: M. HELLE
 DATE: 28/11-80
 THE LOCATION WAS RE-ENTERED BY BORGNY DOLPHIN, 17/9-80
 CASING DATA:
 30" at 228 m
 20" at _____
 13 3/4" at _____
 9 5/8" at _____



LOGS RUN

ISF-SONIC-GR-SP	PRODUCTION LOGS	REPEAT FORMATION TESTER	FLOWMETER CALIBRATION
RUN I 0-810.5m	RUN I RUN II	RUN I	RUN I

LITHOLOGIC SYMBOLS

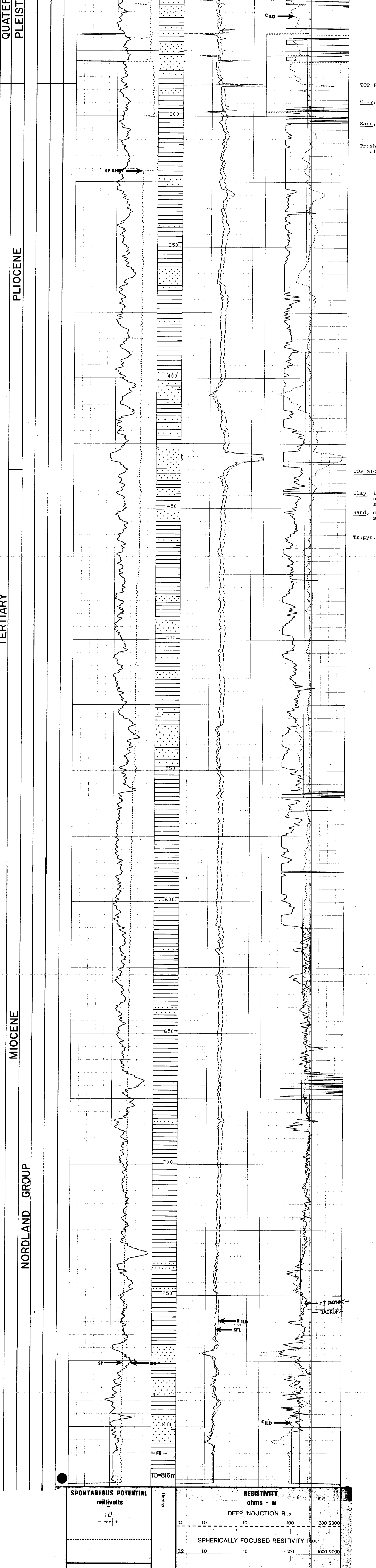
SAND SANDSTONE	LIMESTONE	ANHYDRITE	FORAMS	PYRITE
SILT SILTSTONE	CHALK	COAL LIGNITE	WOOD FRAGS	GLAUCONITE
CLAY CLAYSTONE	DOLOMITE	TUFF	FOSSILS GEN'L	CHERT
SHALE	MARL	SALT	SHELL FRAGS	SIDERITE

SHOW OR STAIN	HYDROCARBON CUT	FLUORESCENCE
---------------	-----------------	--------------

SIDEWALL CORES	CORES	DST	F.I.T.	CASING SHOE/LINER	BIT
----------------	-------	-----	--------	-------------------	-----

SPONTANEOUS POTENTIAL mV/ft	RESISTIVITY ohms - m
10	DEEP INDUCTION R _{LD}
	SPHERICALLY FOCUSED RESISTIVITY R _{SP}
	CONDUCTIVITY C _{LD}
	1000 mmo/m

GAMMA RAY api units	INTERVAL TRANSIT TIME Δt microsecond per foot
100	90
	190 (BACK UP)
	90
	TTI



SPONTANEOUS POTENTIAL mV/ft	RESISTIVITY ohms - m
10	DEEP INDUCTION R _{LD}
	SPHERICALLY FOCUSED RESISTIVITY R _{SP}
	CONDUCTIVITY C _{LD}
	1000 mmo/m

GAMMA RAY api units	INTERVAL TRANSIT TIME Δt microsecond per foot
100	90
	190 (BACK UP)
	90
	TTI

SIMULTANEOUS
INDUCTION RESISTIVITY SONIC
 ISF-SONIC
 Schlumberger