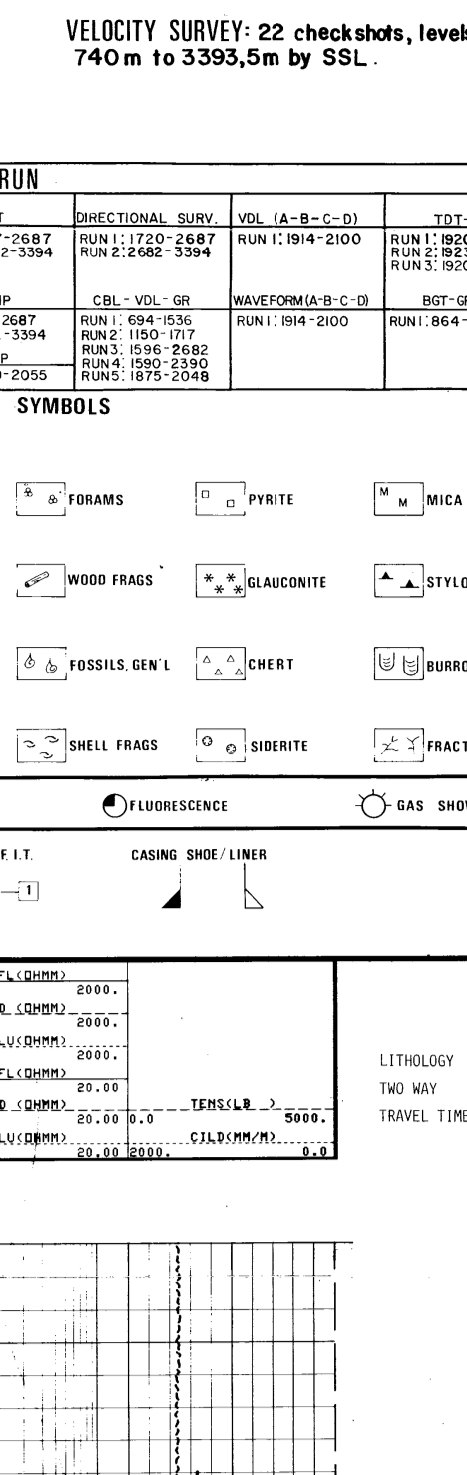


statoil / NORSK HYDRO / SAGA PETROLEUM 34/10-13
COMPLETION LOG
 Scale 1:500

COORDINATES: 61°18'01.93"N
 25°18'03.00"E
 K.B.: 0 m
 WATER DEPTH: 219 m
 TOTAL DEPTH: 3393.5 m (KB)
 DEEPEST FORM. PEN.: TRIASSIC (CARNIAN)
 SEEP DATE: AUG. 24 1981
 RIG RELEASE DATE: JAN. 7 1992
 WELL STATUS: P and A
 RIG: PSEA-SAGA
 CONTRACTOR: ODEGAARD DRILLING & CONSULTING CO A/S
 M. HELLE, A. STORLI, K. J. BRÅMAN, A. PEDERSEN, J. MORVIK
 PREPARED BY: A. STORLI
 DATE: June 1992



CASING DATA:
 30 at 299 m
 70 at 869 m
 103 at 1536 m
 153 at 1720 m
 7" liner at 2680 m

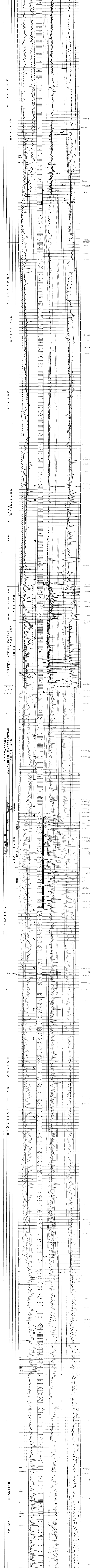
VELOCITY SURVEY: 22 checkshots, levels from 740 m to 3393.5 m by SSL.

TEST	LOGS RUN	TEST	LOGS RUN
3000-3300	301-300-GR-CAL	301-300-GR	301-300-GR
3000-3000	121-120-GR-CAL	121-120-GR	121-120-GR
2800-3000	281-280-GR-CAL	281-280-GR	281-280-GR
1720-1720	1720-1720-GR	1720-1720-GR	1720-1720-GR
1536-1720	1536-1720-GR	1536-1720-GR	1536-1720-GR
1536-1720	1536-1720-GR	1536-1720-GR	1536-1720-GR
1536-1720	1536-1720-GR	1536-1720-GR	1536-1720-GR
1536-1720	1536-1720-GR	1536-1720-GR	1536-1720-GR
1536-1720	1536-1720-GR	1536-1720-GR	1536-1720-GR
1536-1720	1536-1720-GR	1536-1720-GR	1536-1720-GR
1536-1720	1536-1720-GR	1536-1720-GR	1536-1720-GR

LITHOLOGIC SYMBOLS

LOGS RUN

TEST	LOGS RUN	TEST	LOGS RUN
3000-3300	301-300-GR-CAL	301-300-GR	301-300-GR
3000-3000	121-120-GR-CAL	121-120-GR	121-120-GR
2800-3000	281-280-GR-CAL	281-280-GR	281-280-GR
1720-1720	1720-1720-GR	1720-1720-GR	1720-1720-GR
1536-1720	1536-1720-GR	1536-1720-GR	1536-1720-GR
1536-1720	1536-1720-GR	1536-1720-GR	1536-1720-GR
1536-1720	1536-1720-GR	1536-1720-GR	1536-1720-GR
1536-1720	1536-1720-GR	1536-1720-GR	1536-1720-GR
1536-1720	1536-1720-GR	1536-1720-GR	1536-1720-GR
1536-1720	1536-1720-GR	1536-1720-GR	1536-1720-GR
1536-1720	1536-1720-GR	1536-1720-GR	1536-1720-GR



1720 Top of 1720
 1536 Top of 1536
 2800 Top of 2800
 3393.5 KB