



Summary log

Well: 35/3-5

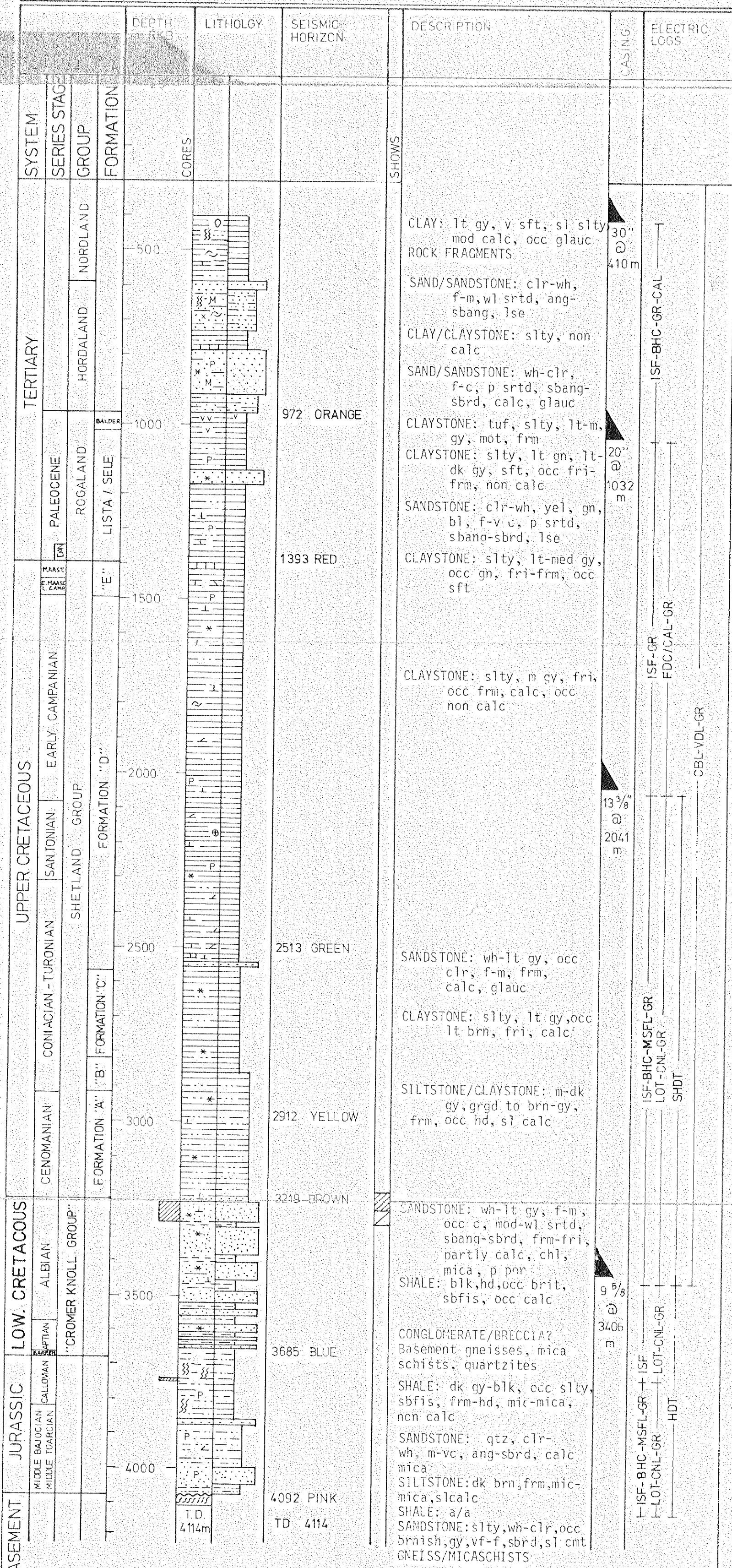
LOCATION: SG 8130-413, SP 484  
61°47'46.71" N  
03°54'44.01" E

KB ELEVATION: 33 m  
WATER DEPTH: 261.5 m  
TOTAL DEPTH: 4114 m

VERTICAL SCALE: 1:10,000

TSO/AK -82

RIG: WEST VENTURE  
SPUDD: 22/12-81 COMPLETED: 2.4.82  
COMPLETION STATUS: DRY WELL



CORE INFORMATION 35/3-5

CORING DEPTH (M RKB)	CORED	RECOVERED	DEPTH CORRECTION	CORED DEPTH (USED ON LOGS, MRKB)
CORE 1: 3227.6-3245.1	17.5 M	17.4 M (99.4%)	+ 3.8 M	3231.4-3249.2
CORE 2: 3245.1-3257.1	12.0 "	12.0 " (100%)	+ 4.1 "	3249.2-3261.0
CORE 3: 3257.1-3274.1	17.0 "	17.0 " (100%)	+ 3.9 "	3261.0-3278.3
CORE 4: 3274.1-3292.1	18.0 "	18.0 " (100%)	+ 4.2 "	3278.3-3295.8
CORE 5: 3740.0-3749.0	9.0 "	0.0 " (0.0%)		

TOTAL CORED: 73.5 M

RECOVERED : 64.4 M (87.6%)

CORE NO 1-4 FROM LOWER CRETACEOUS

CORE NO 5 FROM UPPER JURASSIC

6 RUNS WITH CST-TOOL WERE MADE. 180 SIDEWALL CORES WERE SHOT, 162 RECOVERED (90%)

SUMMARY OF RFT RESULTS TAKEN IN THE 12 1/4 INCH HOLE, LOWER CRETACEOUS

DEPTH (MRKB)	FORMATION (P SIG)	REMARKS
3222.8		NO SEAL
3222.9		NO SEAL
3223.0		NO SEAL
3223.4		NO SEAL
3225.0		NO SEAL
3225.5		NO SEAL
3225.8		NO SEAL
3225.9		NO SEAL
3228.5		NO SEAL
3231.5	4754	
3235.5	4768	
3235.5	4768	
3243.0	4745	
3243.0	4754	SAMPLING POINT
3252.0	4773	
3267.0		NO SEAL
3267.5	4801	
3286.0		NO SEAL
3286.5		NO SEAL
3286.5		NO PERM
3287.5		NO SEAL
3287.8		NO SEAL
3288.0		NO SEAL
3288.0		NO SEAL
3288.5		NO SEAL
3302.0		NO SEAL
3302.0		NO PERM
3302.0		NO SEAL
3303.0		NO PERM
3303.0		NO SEAL
3303.0		NO SEAL
3304.0		NO SEAL
3284.0	4852	
3317.0	4888	
3330.0		NO SEAL
3347.0	4909	
3371.0	4938	
3392.0	4948	
3397.0	4955	