

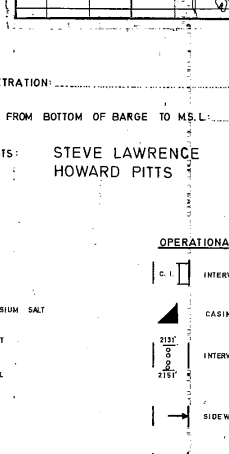
COMPLETION LOG

ENCLOSURE 4

AMOCO NORWAY OIL CO.

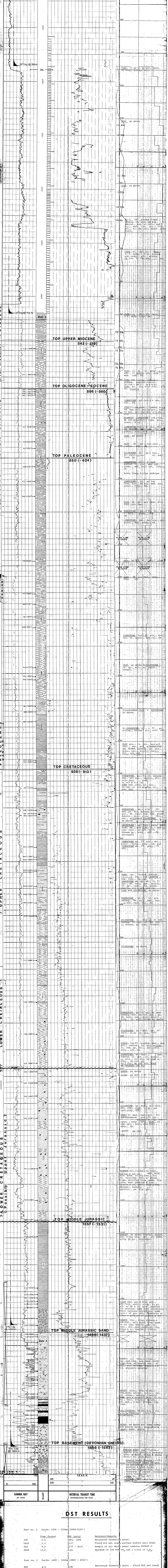
FINAL WELL LOG
36/1-1
 VERTICAL SCALE 1:500

LOCATION: 61°56'40.32"N 04°15'43.90"E
 AREA: OFFSHORE NORWEGIAN NORTH SEA
 95' (28.9 METERS)
 WATER DEPTH: 560 FT (168.6 METERS)
 DATE SPUNDED: 8 MAY 1975
 DATE COMPLETED: 31 JUNE 1975
 TOTAL DEPTH: 1598 M
 SURFACE TOTAL DEPTH: 1573 M, 1587 M, 1554 M, 1472 M, 304 M
 CASING: 30" @ 386, 20" @ 512 M, 13 1/2" @ 1459 M, 9 1/4" @ 1569 M
 LOG TYPE: DYVI ALPHA (SEMISUBMERSIBLE) LED PENETRATION:
 CLASSIFICATION WHEN STARTED: WILDCAT DISTANCE FROM BOTTOM OF BARGE TO H.S.L.
 CLASSIFICATION AFTER COMPLETION: DRYHOLE
 METHOD OF COMPLETION: DRYHOLE
 GEOLGISTS: STEVE LAWRENCE
 HOWARD PITTS



DEPTH (M)	DEPTH (FT)	LITHOLOGY	CORRECTION	INTERVAL TRANSIT TIME		DRILLING LOG
				MIN	MAX	
0	0			220	40	
140	240			140	40	
240	440			140	40	

DEPTH (M)	DEPTH (FT)	GAMMA RAY	DESCRIPTION	REMARKS
0	0	100		
140	240	100		
240	440	100		



DST RESULTS

Test no.	Perforations	Time (hours)	PIP (psig)	Recovery/Remarks
Test no. 1	Perfor: 1550 - 1556m (5084 - 5105')			
PPF		0.5	1091 - 1299	Recovered formation water.
PSIP		1.5	212	Fluid did not reach surface before well died.
PPF		9.0	1377 - 2014	Sample of air above water cushion showed a maximum of 130 PPM CH ₄ and a trace of C ₂ H ₆ .
PSIP		12.0	2183	
Test no. 2	Perfor: 1489 - 1496m (4887 - 4910')			
PPF		8.0	2181	Recovered formation water. Fluid did not reach surface before well died. Sample of air above water cushion showed a maximum of 130 PPM CH ₄ with a trace of C ₂ H ₆ .
PSIP		16.0	2161	

CORE DESCRIPTION
 Core No. 1 1588m (5210') - 1568m (5235') cut 7.62m (25')
 Core: 6.1m (20')
 Core No. 1 (1588m (5210') - 1568m (5235'))
 Quartz Augen gneiss - One-inch lens-shaped augens of quartz in a groundmass of biotite, quartz and pink feldspar with a straw-colored mineral concentrated to discrete layers, one-inch thick evenly spaced throughout. The interval 1588m (5210') - 1568m (5235') has a well-developed, nonvertical fracture. No augens, biotite, or quartz are visible in this interval.