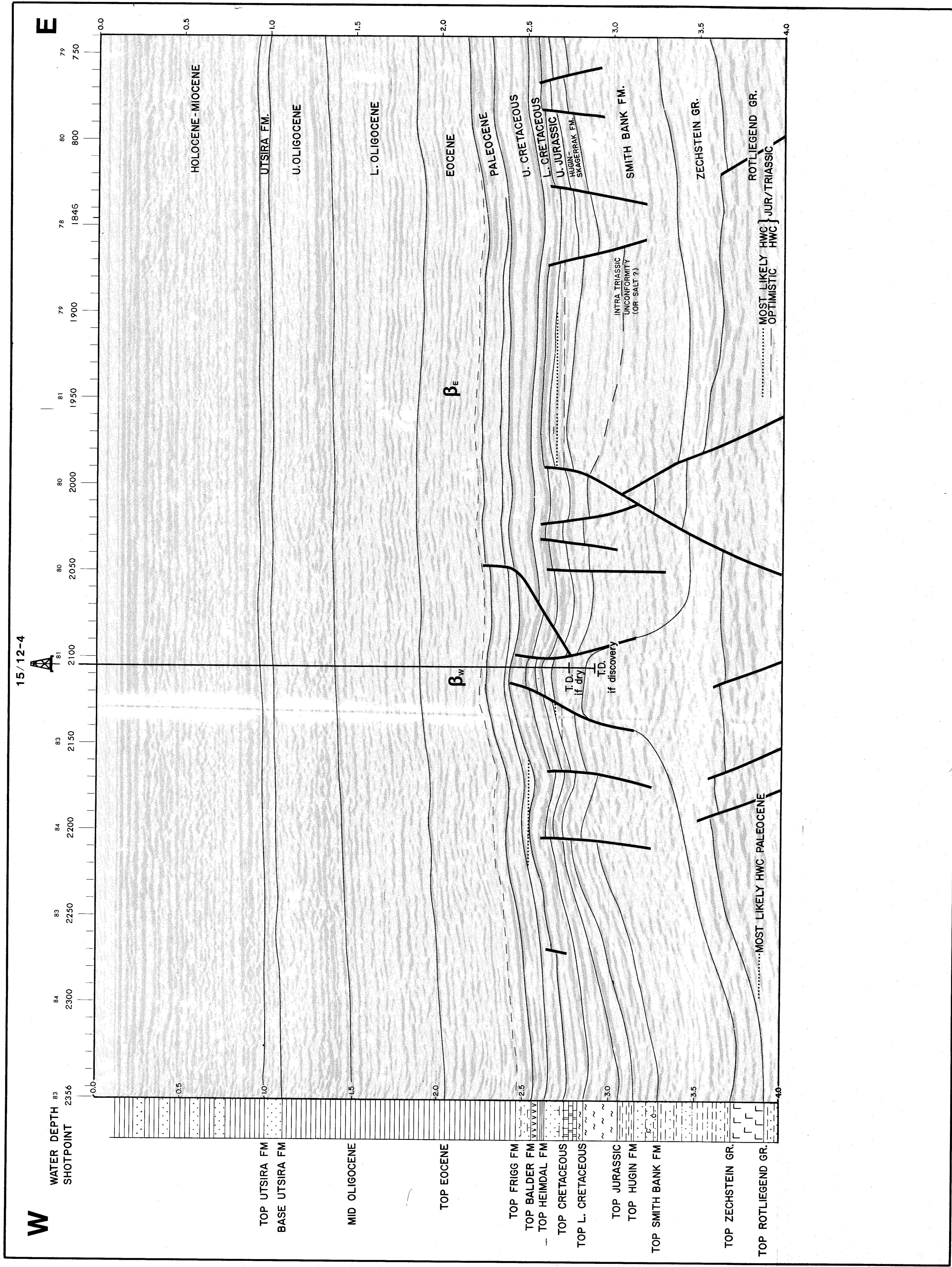


DISPLAY PANEL PL 038 15/12-4 BETA WEST

SEISMIC SECTION 8315-106



FORMATION TOPS

TOPS	71-1		15/12-1		15/12-2		15/12-Beta West	
	Depth	T.W.T.	Depth	T.W.T.	Depth	T.W.T.	Depth	T.W.T.
Seabottom	82	0.111	1480	1480	1480	1480	1480	1480
Utsira Fm.	N.P.	N.P.	87	0.128	1490	1490	86	0.116
Base Utsira Fm.	N.P.	N.P.	123	1.286	1549	1549	86	0.128
Mid Oligocene	?	?	199	1.300	1559	1559	101	0.130
Eocene	?	?	191	1.811	2000	2000	118	1.300
Frigg Fm.	?	?	232	2.144	2241	2241	170	1.770
Balder Fm.	184	2.038	1905	2373	2307	2291	2076	2240
Heimdal Fm.	N.P.	N.P.	2168	2588	2446	2324	2059	2201
Chicoenous	2185	2.261	1933	3093	2974	3000	2659	2501
Lower Cretaceous	N.P.	N.P.	2919	2485	2148	1441	2509	2191
Jurassic	N.P.	N.P.	3179	2962	2591	1566	3025	2387
Hugin Fm.	2608	2.490	2109	3088	2729	2270	2793	2417
Smith Bank Fm.	2773	2.577	2152	3335	3245	2306	2412	2637
Salt	N.P.	N.P.	—	—	—	—	2883	2535
T.D.	2773	2.577	2152	—	—	—	2889	2546

PURPOSE OF TEST AND OBJECTIVES

15/12-4 is designed to test both a thin Heimdal Fm. (stratigraphic trap) and sandstones of Jurassic/Triassic age (structural trap) on Beta West.

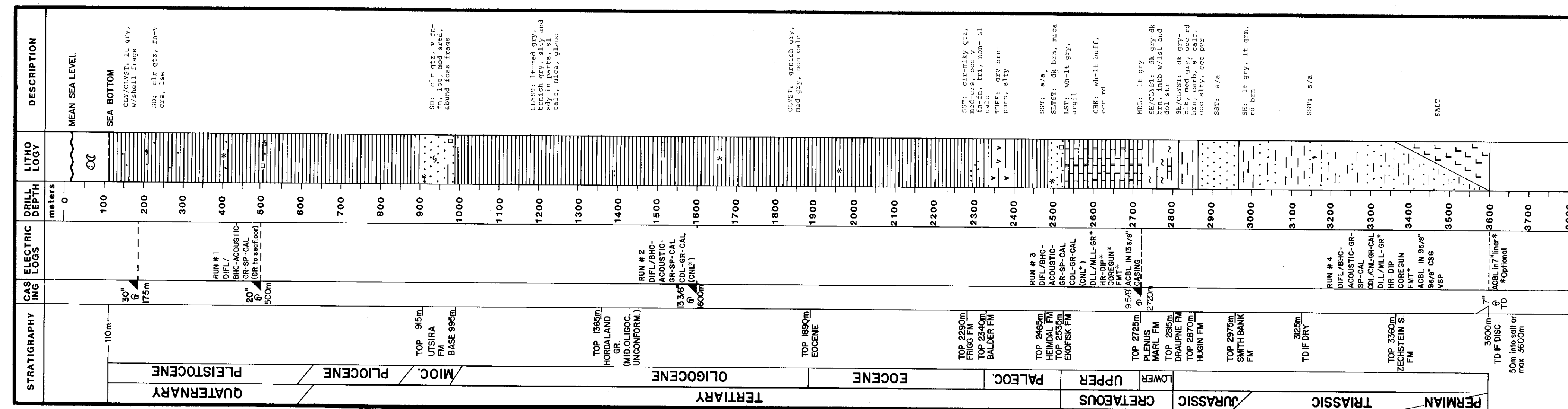
Possible sands of the Frigg Fm. and fractured limestones in Cretaceous form secondary speculative prospects of unknown potential.

DRILLING HAZARDS

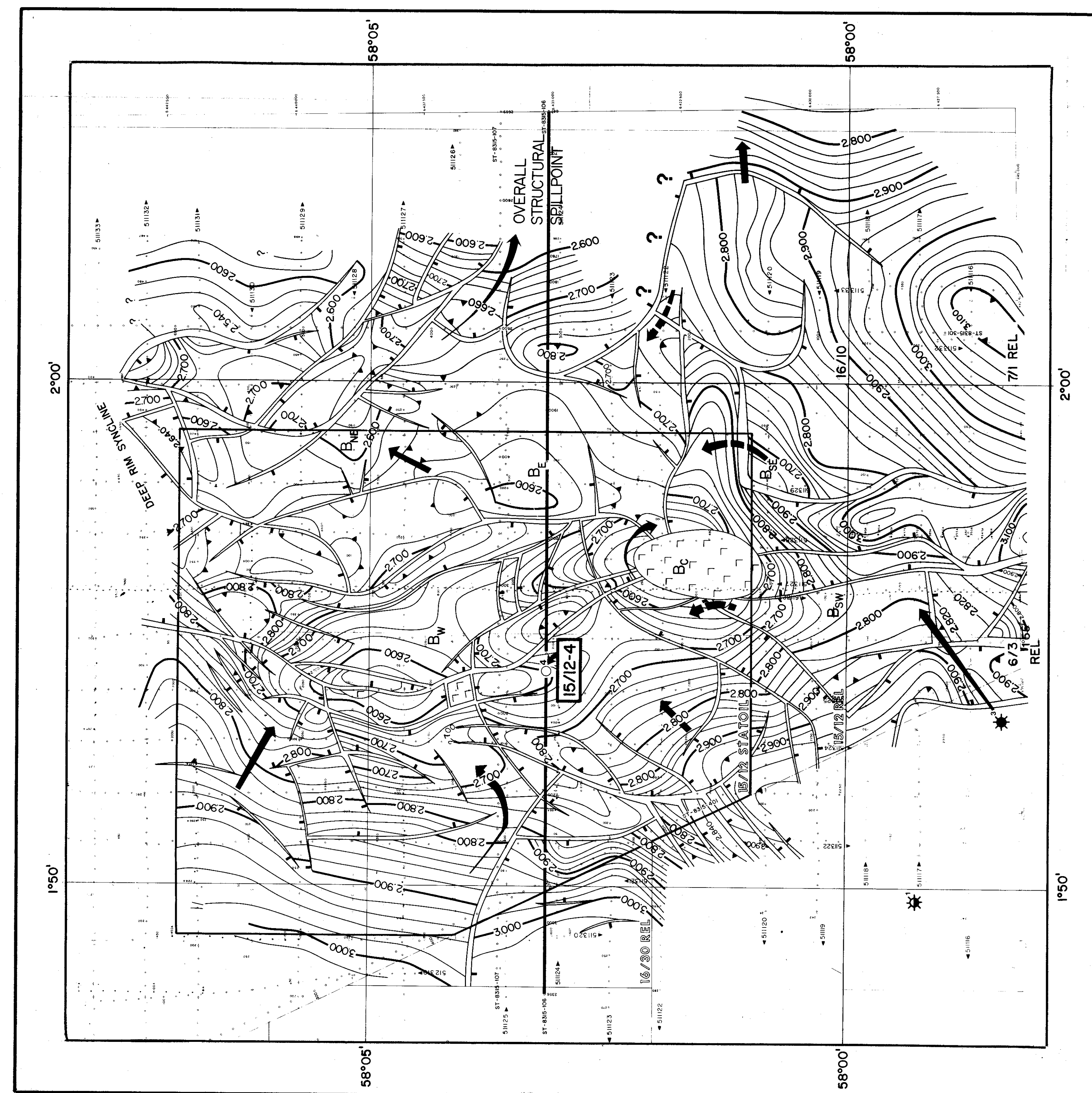
There are no significant geological hazards at the location. At 492 m (RKB) immediately south of location there is an area of high amplitude reflection below the clay layer. There is, however, no conclusive evidence of gas.

The location is in a structurally complicated area, and several problems may arise during the drilling of the well. For details, refer page 5 in the drilling program.

WELL PROGNOSIS



STRUCTURE MAP IN TIME



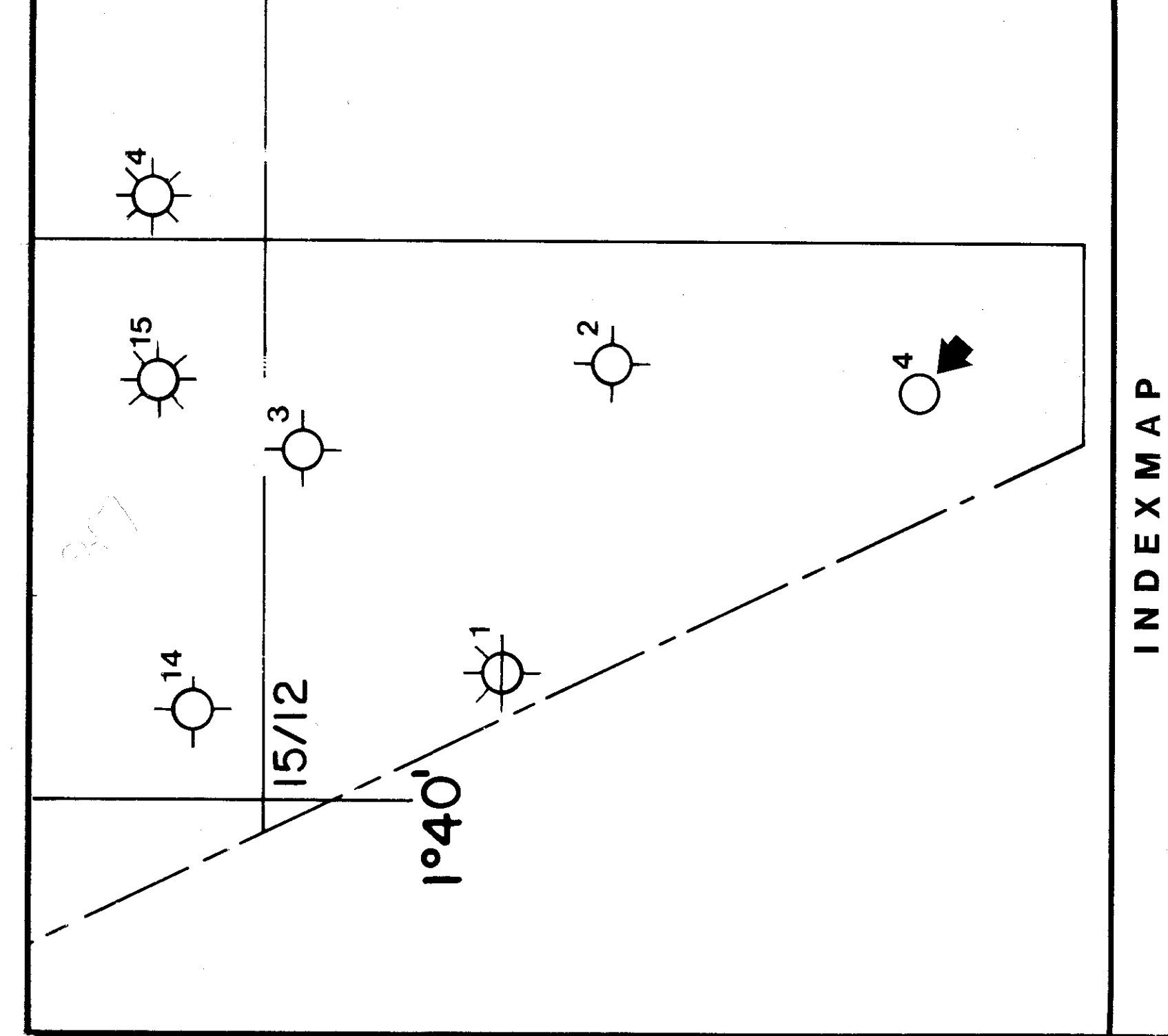
TOP HUGIN FM

LEGEND:
 — MIGRATION PATHS AND SPILL DIRECTIONS
 — TOP OF OIL WINDOW (2,900sec / 3400m)

WELL INFORMATION

15/12-4 BETA WEST

CLASSIFICATION	WILDCAT
COORDINATES	58° 03' 8.5"N 01° 54' 13.8"E
SEISMIC LINE	ST 8315/106
SHOTPOINT	2105
DRILLING RIG	DEEPSEA BERGEN
K.B.E.	23 m
PROJECTED TD	MAX 3600 m
LICENCE	PL 038
LICENCEES	STATOIL (50% and operator) ESSO (50%)



Den norske stats
oljeselskap a.s.

DISPLAY PANEL PL 038
15/12-4
BETA WEST

Original	16/12-83
Revised	16/12-83
Approved	16/12-83
Drawn	16/12-83
Checked	16/12-83
Reviewed	16/12-83
Approved	16/12-83
Drawn	16/12-83
Checked	16/12-83
Reviewed	16/12-83
Approved	16/12-83
Drawn	16/12-83
Checked	16/12-83
Reviewed	16/12-83
Approved	16/12-83