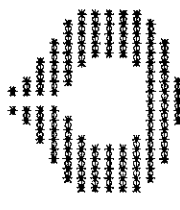


STATOIL ENCLOSURE 5

SEISMIC PROCESSING CENTRE
STAVANGER - NORWAY



BLOCK 15/12
LINE ST8315-106
SP 1800 - 2356

OFFSET PANEL

OFFSET = 175M • 575M • 975M • 1375M • 1775M • 2175M • 2525M

FIELD RECORDING PARAMETERS

DATA SHOT BY: M.V.S. RESEARCH
RECORDING INSTRUMENT: 10S V. 10S V.
RECORDING FILTERS: HIGH PASS FILTER 100 Hz
RECORDING POLARITY: NUMBER ON TRACKS RECORDED AS A NEGATIVE
SOURCE: 5000 Hz
RECORD LENGTH/SAMPLE RATE: 2500 S/100 Hz
SCALE: 500 VOLTS
SOURCE: 25 FT RES
SPREAD: 174 METRES
SPREAD: 25 METRES
DISTANCE TO NEAR GROUP: 25 METRES
CABLE LENGTH: 24 FOLDS
CONVERSIONS: 24 FOLDS
NAVIGATION SYSTEM: PULS - B

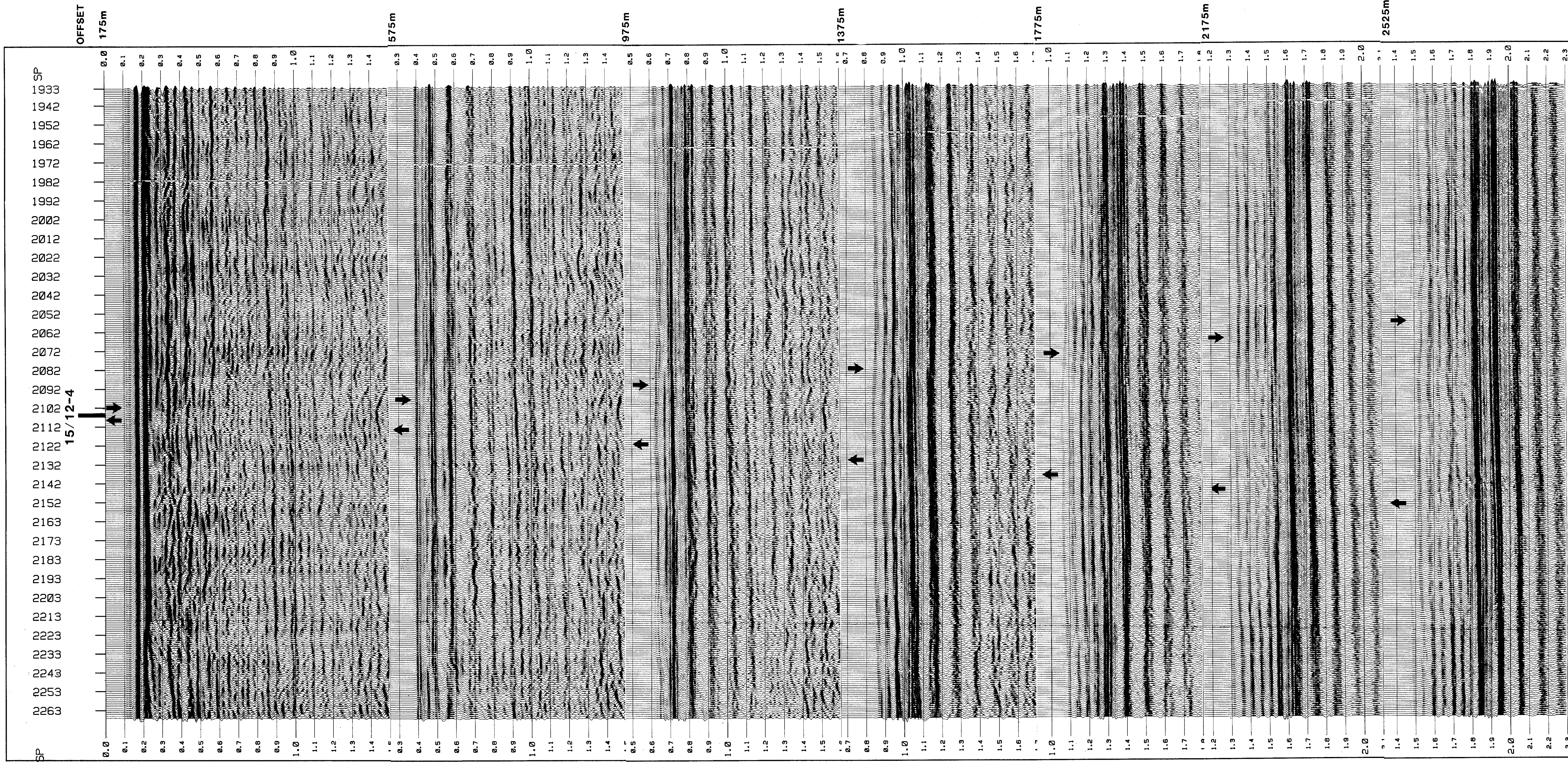
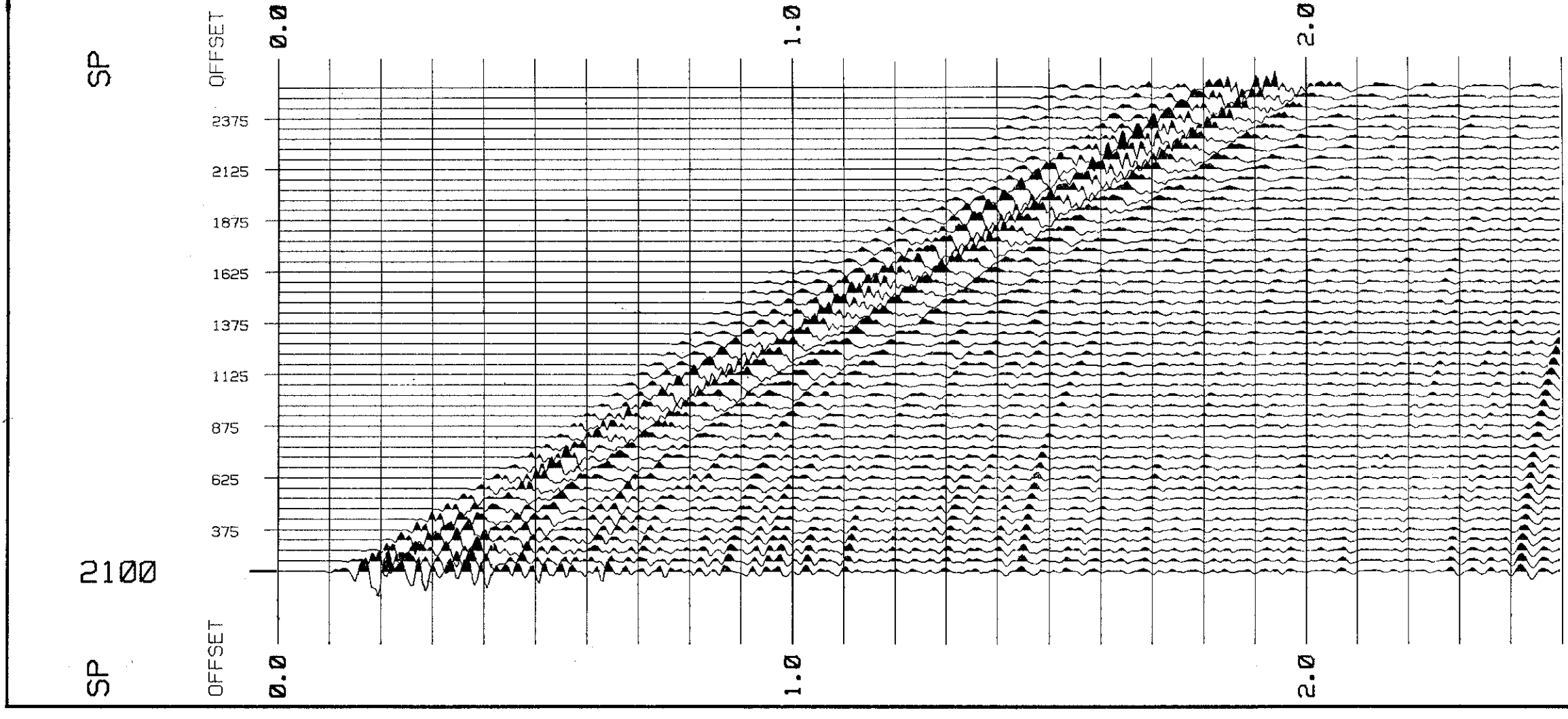
PROCESSING PARAMETERS

DATA PROCESSED BY: STATOIL SEISMIC PROCESSING CENTRE
STAVANGER - NORWAY
POLARITY CONVENTION: THE POLARITY OF THE FIELD RECORDING AND THE POLARITY OF THE PROCESSING
SECTION LENGTH: 4 METRES
TRAIL AMPLITUDE RECOVERY: EXPONENTIAL GAIN 40 DB FROM 10000 Hz AND CONSTANT GAIN FROM 4000 Hz

PROCESSED BY RUBA
DEC. 1988

DISPLAY PARAMETERS

REPEATITY: 100000
HORIZONTAL SCALE: 18 CM/SEC
VERTICAL SCALE: 18 CM/SEC



↑ CDP POSITION FOR RECEIVER OVER WELL LOCATION

↓ CDP POSITION FOR SOURCE OVER WELL LOCATION