

LOPETROL J

Denne rapport
tilhører



UND DOK.SENTER

L.NR. 20084470011

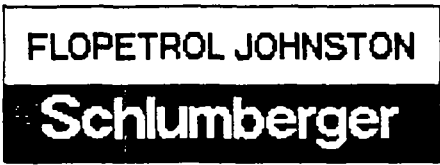
KODE Well 31/2-15 nr.10

Returneres etter bruk

BOTTOM HOLE PRESS. AND TEMP. SURVEY

: NORSKE SHELL
: NORWAY
: TROLL
: 31/2-15
: UPPER JURASSIC PT No. 1
: ELS 84/88
: NWB

Well DATA acquisition system-Well DATA acquisition system-Well DATA acquisition



BOTTOM HOLE PRESS. AND TEMP. SURVEY

company	:NORSKE SHELL
country	:NORWAY
field	:TROLL
well	:31/2-15
tested zone	:UPPER JURASSIC PT No. 1
report nbr.	:ELS 84/88
base	:NWB

FLOPETROL JOHNSTON

Schlumberger

ELS 84.88

SSDP / GAUGE 84222 / 84186 was run in tandem
with SDP 84223 / 84178 from which NO DATA
was available due to too low voltage in battery.

GENERAL INFORMATION

1.1	service	:BOTTOM HOLE PRESS. AND TEMP. SURVEY
1.2	company	:NORSKE SHELL
1.3	well	:31/2-15
1.4	field	:TROLL
1.6	country	:NORWAY
1.7	tested zone	:UPPER JURASSIC
1.8	lat.,long.	:60deg 55' 25,3"N-03deg 34' 01,5"S

OPERATION DATA

2.1	date of test	:16 OCT-20 OCT 1984
2.2	report nbr.	:ELS 84/88
2.3	base	:NWB
2.5	recorded by	:GEIR-OLE EIKEMO
2.6	witnessed by	:HERBERT LANSINK

WELL DATA

3.1	state before test	:CASED HOLE
3.2	well type	:APPRAISAL
3.3	fluid type	:OIL
3.6	min. restriction	:1.875"
3.8	vert. depth	:1634m BRKB
3.9	hole size	:9 5/8"
3.12	perf. shot density	:12 spf,180 deg
3.13	perf. gun type	:BAKER 5" DEEP PENETRATOR
3.14	perf. conditions	:UNDERBALANCED
3.15	perf. interval(s)	:1572-1580m BRKB
3.17	static W.H.P.	:655 psi
3.19	oil gravity	:0.88
3.20	gas gravity	:0.65

MUD PROPERTIES

4.1	type	:CaCl ₂ (BRINE)
4.2	weight	:1.20 SG
4.5	chlorides	:140 000ppm
4.7	CUSHION type	:DIESEL OIL

DEPTH INFORMATION

5.1	depth unit	:METRE
5.2	depth reference	:RKB
5.4	total depth drlg.	:1677mBRKB
5.5	total depth FLO.	:1551.2mBRKB
5.8	gauge M.P. set at	:1545.1mBRKB

DOWNHOLE EQUIPMENT

6.1	cable type	:SLICK LINE
6.2	gauge	:SDP/TPT# 84223
6.3	recorder	:#84178
6.5	length	:242cm
6.6	max O.D	:1 15/16"

SEQUENCE OF EVENTS

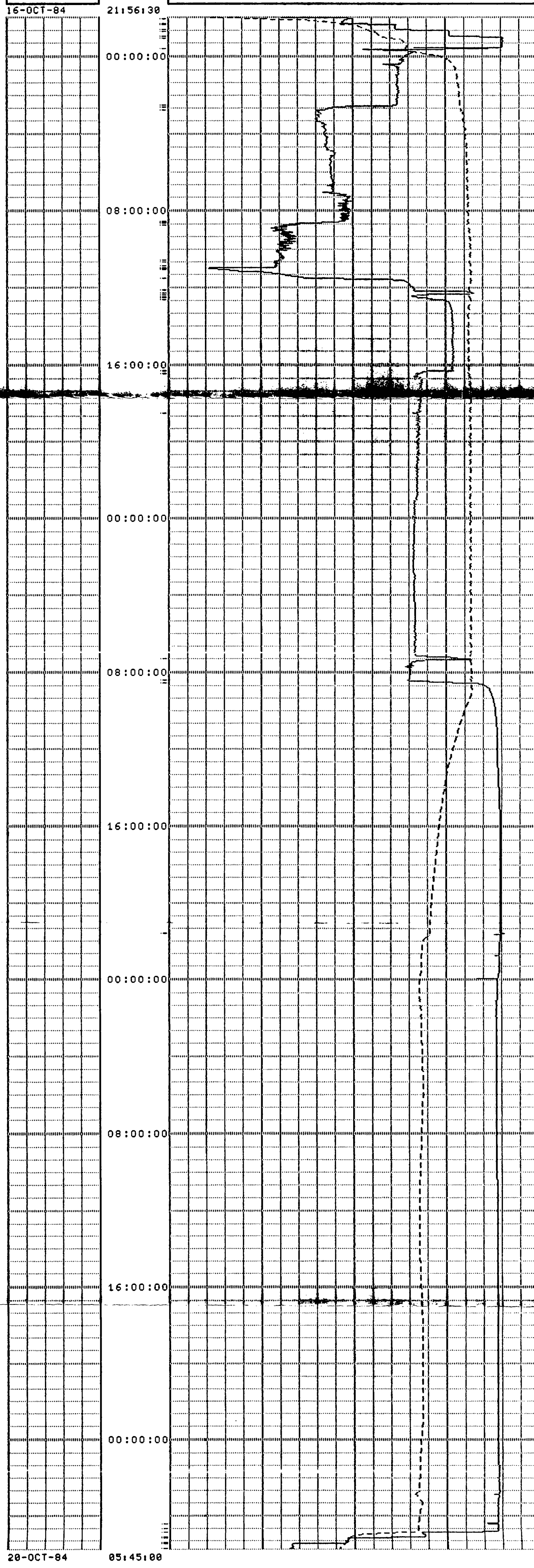
16-OCT-84 19:45:00	! POWER ON SDP # 84223, RM # 84178.
16-OCT-84 20:24:00	! PRESSURE TEST LUBRICATOR.
16-OCT-84 20:59:00	! OPEN LUB. VALVE AND START 1st. GRADIENT.
16-OCT-84 21:14:00	! START R.I.H. WITH GAUGES.
16-OCT-84 22:00:00	! START 2nd. GRADIENT STOP @ 1392 mRKB.
16-OCT-84 22:15:00	! R.I.H.
16-OCT-84 22:18:00	! START 3rd. GRADIENT STOP @ 1442 mRKB.
16-OCT-84 22:33:00	! R.I.H.
16-OCT-84 22:38:00	! START 4th. GRADIENT STOP @ 1492 mRKB.
16-OCT-84 22:53:00	! R.I.H. TO SET GAUGES IN F-NIPPEL.
16-OCT-84 22:59:00	! GAUGES SET IN F-NIPPEL M.P. @ 5069.5 FT.
16-OCT-84 23:35:00	! OPEN WELL AT CHOKE-MANIFOLD ON 24/64" FIXED CHOKE.
17-OCT-84 02:30:00	! CHANGE TO 32/64" ADJ. CHOKE.
17-OCT-84 02:35:00	! CHANGE TO 36/64" ADJ. CHOKE.
17-OCT-84 02:45:00	! CHANGE TO 36/64" FIXED CHOKE.
17-OCT-84 08:30:00	! CHANGE TO 36/64" ADJ. CHOKE
17-OCT-84 08:33:00	! CHANGE TO 48/64" ADJ. CHOKE.
17-OCT-84 08:38:00	! CHANGE TO 60/64" ADJ. CHOKE.
17-OCT-84 08:42:00	! CHANGE TO 68/64" ADJ. CHOKE.
17-OCT-84 10:31:00	! CHANGE TO 88/64" ADJ. CHOKE.
17-OCT-84 10:38:00	! CHANGE TO 100/64" ADJ. CHOKE.
17-OCT-84 10:51:00	! CHOKING AT SANDTRAP.
17-OCT-84 10:55:00	! BY-PASS SANDTRAP, CHANGE TO 96/64" ADJ. CHOKE.
17-OCT-84 10:58:00	! CHANGE TO 84/64" ADJ. CHOKE
17-OCT-84 11:02:00	! CHANGE TO 68/64" ADJ. CHOKE.
17-OCT-84 11:30:00	! CHANGE TO 36/64" FIXED CHOKE.
17-OCT-84 12:05:00	! CHANGE TO 24/64" ADJ. CHOKE.
17-OCT-84 12:15:00	! CHANGE TO 32/64" ADJ. CHOKE.
17-OCT-84 12:20:00	! CHANGE TO 36/64" ADJ. CHOKE.
17-OCT-84 12:25:00	! CHANGE TO 36/64" FIXED CHOKE.
17-OCT-84 12:30:00	! CHANGE TO 28/64" ADJ. CHOKE.
17-OCT-84 12:35:00	! CHANGE TO 28/64" FIXED CHOKE, SAND FOUND IN 36/64" FIXED.
17-OCT-84 16:15:00	! CHANGE TO 36/64" ADJ. CHOKE.
17-OCT-84 16:25:00	! CHANGE TO 36/64" FIXED CHOKE.
17-OCT-84 18:28:00	! APPROX. 3 LITRES OF SAND FOUND IN SANDTRAP.
18-OCT-84 07:15:00	! PRESS. INCREASE DUE TO CLOSURE OF GASLINE.
18-OCT-84 07:15:00	! BY-PASS SANDTRAP.
18-OCT-84 08:23:00	! SWITCH FLOW THROUGH SANDTRAP.
18-OCT-84 08:30:00	! WELL SHUT IN AT PCT-VALVE.
18-OCT-84 08:32:00	! SHUT IN SANDTRAP.
18-OCT-84 21:32:00	! OPEN PCT-VALVE.
20-OCT-84 04:24:00	! R.I.H. TO RETRIEVE GAUGES.
20-OCT-84 04:40:00	! AT DEPTH, LATCHED ON, P.O.O.H.
20-OCT-84 04:51:00	! STOP AT 1492 mRKB FOR 1st. GRADIENT STOP.
20-OCT-84 05:06:00	! P.O.O.H.
20-OCT-84 05:10:00	! STOP AT 1442 mRKB FOR 2nd. GRADIENT STOP.
20-OCT-84 05:25:00	! P.O.O.H.
20-OCT-84 05:28:00	! STOP AT 1392 mRKB FOR 3rd. GRADIENT STOP.
20-OCT-84 05:43:00	! P.O.O.H.
20-OCT-84 06:05:00	! STOP 1m ABOVE RKB FOR LAST GRADIENT STOP.
20-OCT-84 06:23:00	! TOOLS IN LUBRICATOR.
20-OCT-84 06:25:00	! CLOSE LUB.VALVE, BLEED OFF PRESS, RIG DOWN GAUGES.
20-OCT-84 06:56:00	! POWER OF GAUGE.

FT IS CALCULATED FROM REAL FLOWING TIME.

NEW P₀ TAKEN AFTER AGREEMENT WITH J.BØE.

MORSE SHELL WELL: 31/2-15, TROLL FIELD, PT #1, SDP#04223, DP. 5059.5 FT. RKB
 (264) VERSUS TIME LOGGING START TIME: 16-OCT-84 21:56:00 SCALE: 14400. sec/INCH

	SDP (psia)
1900. [2021.5]	2300.
	SDT (degF)
100. [106.6]	160.

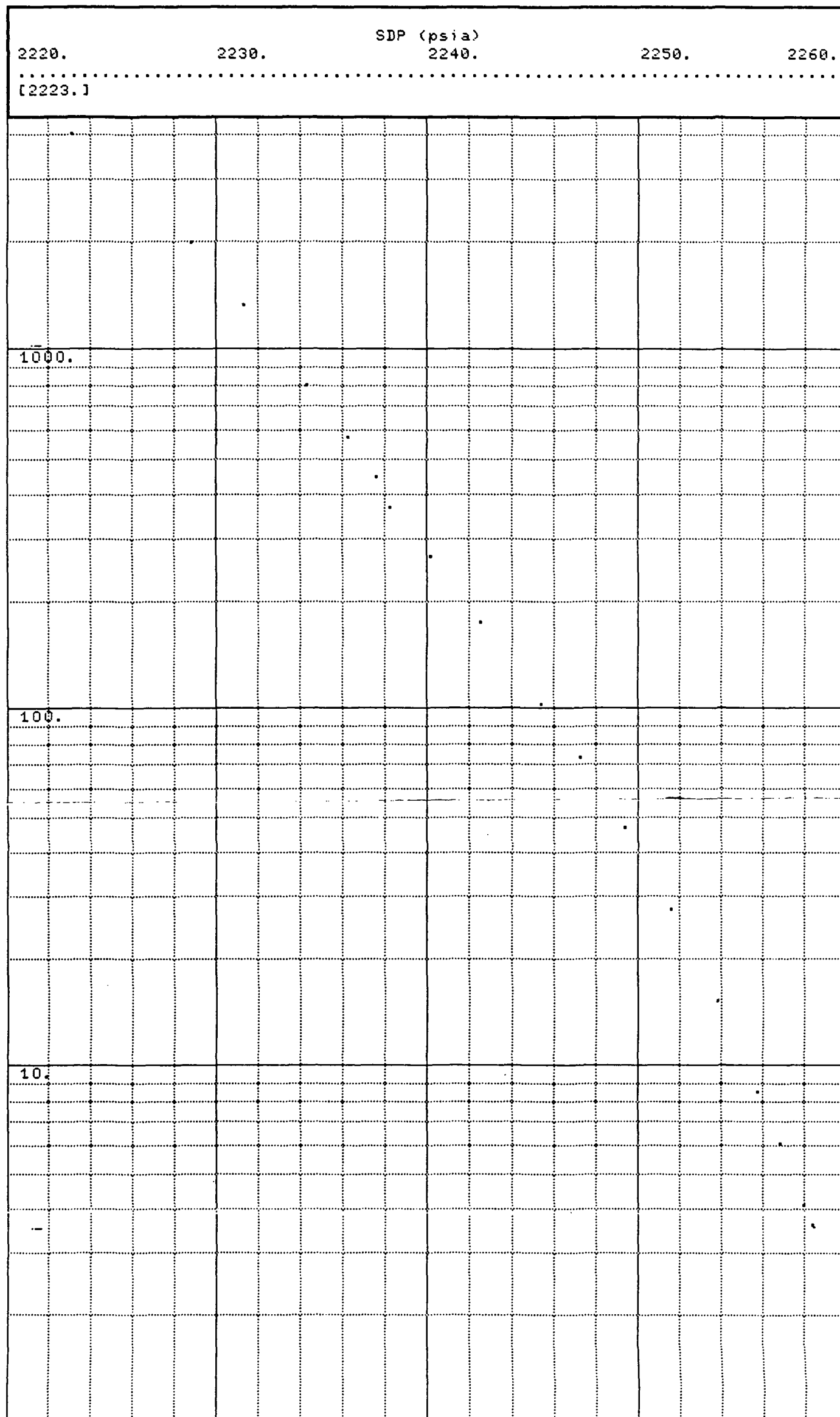


20-OCT-84 05:45:00

NORSKE SHELL WELL: 31/2-15, TROLL FIELD, PT #1, SDP#84223, MP. @ 5069.5 FT. RKB.

[267] HORNER PLOT T0=18-OCT-84 08:30:00

FT=032:55:00



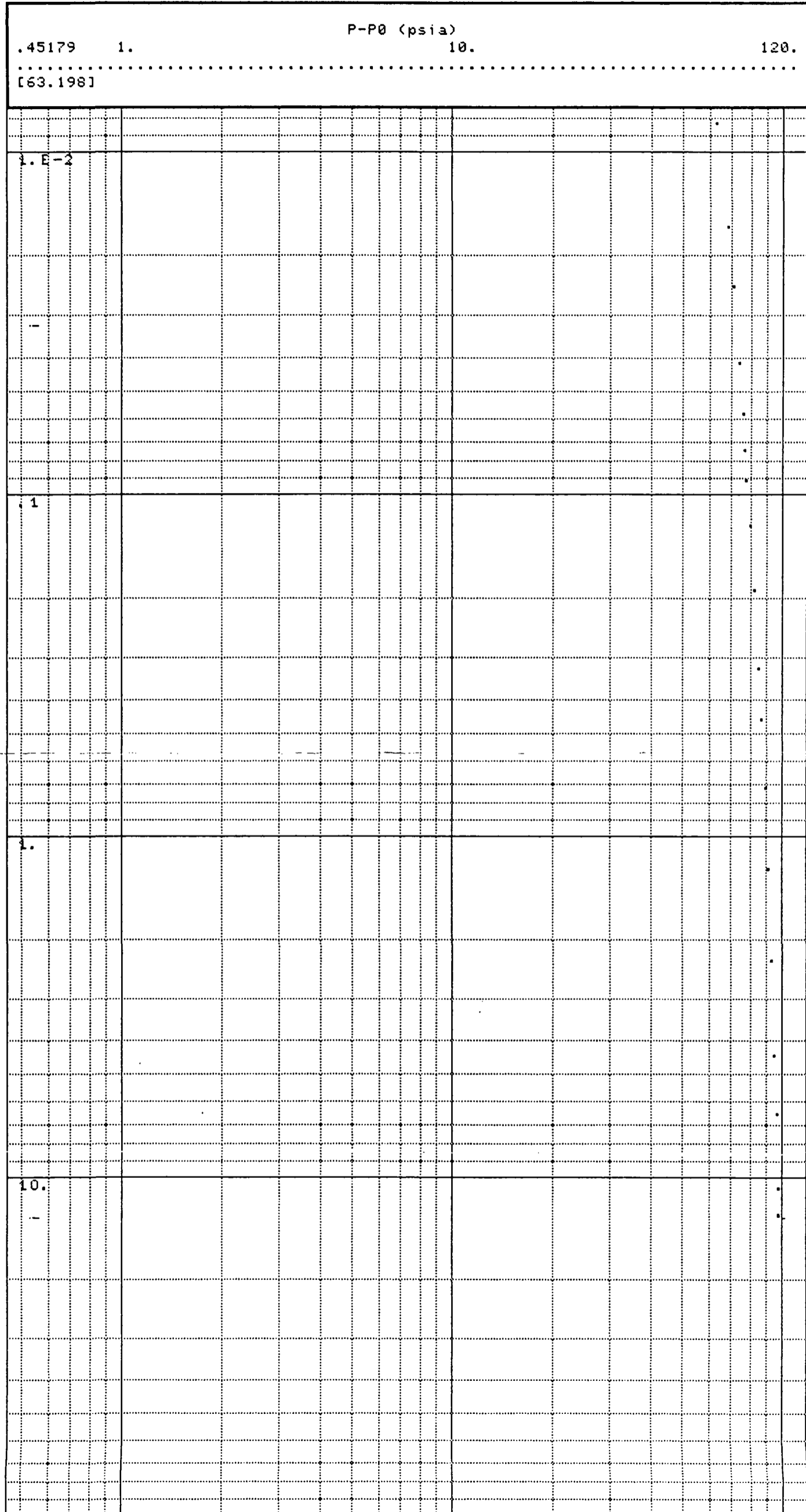
18-OCT-84

21:32:00

NORSKE SHELL WELL: 31/2-15, TROLL FIELD, PT #1, SDP#84223, MP. @ 5069.5 FT. RKB.

[268] LOG-LOG PLOT T0=18-OCT-84 08:30:00

P0=2159.84



18-OCT-84

21:32:00

NORSKE SHELL WELL: 31/2-15, TROLL FIELD, DST#1, SDP#84223, MP.# 5069.5 FT. RKB.

[253] START TIME: 16-OCT-84 19:45:00

page 1

19:45:00 POWER ON SDP # 84223, RM # 84178.

SDT SDP
16-OCT-84 degF psia

19:50:00	57.87	48.36
19:50:30	58.17	32.78
19:51:00	58.32	25.01
19:51:30	58.32	20.79
19:52:00	58.47	18.41
19:53:00	58.78	15.88
19:54:00	58.93	14.75
19:55:00	59.08	14.78
19:57:00	59.08	14.05
20:01:00	58.32	13.70
20:03:00	58.02	14.27
20:05:00	57.41	14.30
20:09:00	56.05	13.34
20:13:00	54.38	13.07
20:15:00	53.47	12.96
20:16:00	53.02	12.19
20:20:00	52.11	12.86
20:22:00	51.80	13.22
20:24:00	PRESSURE TEST LUBRICATOR.	
20:26:00	51.65	15.50
20:30:00	51.35	19.19
20:30:30	51.35	19.74
20:31:00	51.50	20.87
20:31:30	51.50	22.86
20:32:00	51.80	27.68
20:32:30	52.11	64.81
20:33:00	52.26	2012.53
20:33:30	52.71	2032.55
20:34:00	52.71	1989.71
20:34:30	53.02	1940.91
20:35:00	53.32	2161.19
20:35:30	53.47	2110.42
20:36:00	53.62	2071.21
20:36:30	53.93	2038.48
20:37:00	54.08	2009.92
20:37:30	54.08	1984.01
20:38:00	54.23	1959.92
20:38:30	54.38	1936.77
20:39:00	54.53	1915.69
20:39:30	54.53	1895.79
20:40:00	54.53	1877.63
20:40:30	54.68	1864.73
20:41:00	54.68	2279.32
20:41:30	54.84	2232.38
20:42:00	54.84	2209.09
20:42:30	54.84	2189.87
20:43:00	54.99	2171.79
20:43:30	54.84	2155.64
20:44:30	54.99	2125.97
20:45:00	54.99	2110.72
20:45:30	54.99	2097.89
20:46:00	54.99	2084.42
20:47:00	54.99	2056.81
20:48:00	54.84	2031.40
20:48:30	54.99	2020.53
20:49:30	54.99	1996.95
20:50:00	54.84	1986.05
20:50:30	54.84	1992.83
20:51:00	54.84	1971.10

16-OCT-84	SDT degF	SDP psia
20:51:30	54.68	1952.35
20:52:00	54.68	1936.50
20:52:30	54.68	1922.07
20:53:00	54.53	772.02
20:53:30	54.68	58.71
20:54:00	54.53	61.33
20:55:00	54.38	65.58
20:55:30	54.38	68.09
20:56:00	54.38	74.84
20:56:30	54.23	136.66
20:57:00	54.23	717.20
20:57:30	54.23	703.96
20:58:00	54.08	636.52
20:58:30	54.08	623.39
20:59:00	OPEN LUB. VALVE AND START 1st. GRADIENT.	
20:59:00	54.08	627.32
20:59:30	53.93	626.41
21:00:00	53.77	621.34
21:00:30	53.77	615.07
21:01:00	53.93	609.52
21:01:30	53.77	608.67
21:02:30	53.77	608.72
21:03:30	53.77	608.02
21:11:30	54.08	609.11
21:13:30	53.93	609.38
21:14:00	START R.I.H. WITH GAUGES.	
21:14:30	53.93	609.85
21:16:30	53.77	611.88
21:17:00	53.47	624.48
21:18:00	53.17	654.05
21:19:00	53.02	682.40
21:19:30	52.86	696.24
21:20:00	52.71	708.96
21:20:30	52.41	720.89
21:21:30	52.11	743.85
21:22:00	51.65	755.11
21:22:30	51.50	766.80
21:23:00	51.20	780.15
21:23:30	50.89	794.56
21:24:00	50.59	809.79
21:25:00	49.98	841.95
21:25:30	49.68	858.92
21:26:30	49.07	893.97
21:27:30	48.62	929.82
21:28:00	48.16	948.17
21:28:30	48.01	964.96
21:29:00	48.01	980.33
21:30:00	48.77	1012.93
21:31:00	49.98	1046.80
21:33:00	53.17	1116.39
21:34:00	54.99	1151.12
21:34:30	56.05	1168.55
21:35:30	57.87	1202.66
21:36:00	58.78	1220.38
21:38:00	62.56	1289.56
21:39:00	64.53	1323.95
21:40:00	66.50	1359.36
21:42:00	70.58	1433.27
21:43:00	72.85	1469.86
21:43:30	73.91	1488.76
21:45:30	78.59	1566.53
21:46:30	81.01	1604.99

16-OCT-84	SDT degF	SDP psia
21:47:00	82.21	1624.58
21:51:00	92.16	1789.10
21:53:00	97.43	1873.82
21:54:00	99.99	1915.73
21:56:00	105.25	2000.39
21:56:30	106.60	2021.51
21:57:00	107.80	2041.79
21:57:30	109.15	2062.65
21:58:00	110.50	2082.39
21:58:30	111.70	2093.39
21:59:00	113.05	2097.80
21:59:30	114.10	2099.84
22:00:00	START 2nd.	GRADIENT STOP @ 1392 mRKB.
22:00:00	115.30	2096.75
22:00:30	116.35	2095.26
22:04:30	122.49	2091.72
22:06:30	124.14	2090.37
22:10:30	126.23	2088.74
22:14:30	127.43	2088.08
22:15:00	R. I. H.	
22:15:30	127.58	2097.83
22:16:00	127.73	2104.75
22:16:30	127.88	2115.82
22:17:30	128.18	2139.93
22:18:00	START 3rd.	GRADIENT STOP @ 1442 mRKB.
22:18:00	128.33	2145.41
22:22:00	130.12	2146.38
22:30:00	131.62	2145.60
22:32:00	131.77	2145.66
22:32:30	131.92	2146.40
22:33:00	R. I. H.	
22:33:00	132.07	2150.66
22:34:00	132.07	2157.89
22:34:30	132.22	2162.27
22:35:00	132.22	2169.00
22:36:00	132.51	2185.01
22:36:30	132.51	2191.07
22:37:00	132.66	2197.67
22:37:30	132.66	2203.49
22:38:00	START 4th.	GRADIENT STOP @ 1492 mRKB.
22:41:30	133.41	2204.02
22:49:30	134.01	2203.82
22:51:30	134.01	2203.75
22:52:30	134.16	2203.76
22:53:00	R. I. H. TO SET GAUGES IN F-NIPPEL.	
22:53:00	134.01	2207.01
22:53:30	134.16	2209.74
22:54:00	134.16	2207.27
22:54:30	134.16	2214.78
22:55:00	134.16	2224.93
22:55:30	134.16	2236.88
22:56:00	134.31	2250.08
22:56:30	134.46	2260.02
22:58:30	135.20	2261.73
22:59:00	GAUGES SET IN F-NIPPEL M.P. @ 5069.5 FT. RKB.	
22:59:30	135.50	2262.12
23:00:00	135.80	2261.86
23:00:30	136.10	2262.20
23:01:30	136.40	2260.73
23:02:30	136.55	2261.31
23:06:30	137.59	2261.50
23:08:30	138.04	2261.58

16-OCT-84	SDT degF	SDP psia
23:09:30	138.04	2261.48
23:10:00	138.19	2262.28
23:11:00	138.19	2261.56
23:13:00	138.34	2261.11
23:17:00	138.49	2261.30
23:25:00	138.64	2261.02
23:29:00	138.79	2261.21
23:29:30	138.64	2258.51
23:30:00	138.79	2237.45
23:30:30	138.64	2167.04
23:31:00	138.79	2175.14
23:31:30	138.64	2194.68
23:32:00	138.79	2209.86
23:32:30	138.79	2221.30
23:33:00	138.64	2230.02
23:33:30	138.64	2236.79
23:34:00	138.64	2241.83
23:34:30	138.79	2245.56

[255] T0=16-OCT-84 23:35:00 P0=2245.56

16-OCT-84	SDT degF	SDP psia	t-t0 HR	L(t-t0)	P-P0 psia	L(P-P0)
23:35:00	OPEN WELL AT CHOKE-MANIFOLD ON 24/64" FIXED CHOKE.					
23:35:30	138.79	2158.53	0.0083	-2.0792	-87.03	1.9397
23:36:00	138.79	2133.14	0.0167	-1.7782	-112.42	2.0508
23:36:30	138.79	2111.64	0.0250	-1.6021	-133.92	2.1268
23:37:00	138.79	2112.66	0.0333	-1.4771	-132.90	2.1235
23:37:30	138.79	2123.82	0.0417	-1.3802	-121.74	2.0854
23:38:00	138.79	2132.35	0.0500	-1.3010	-113.21	2.0539
23:38:30	138.79	2139.82	0.0583	-1.2341	-105.74	2.0242
23:39:00	138.94	2145.57	0.0667	-1.1761	-99.99	2.0000
23:39:30	138.94	2150.71	0.0750	-1.1249	-94.85	1.9770
23:40:30	139.23	2158.44	0.0917	-1.0378	-87.12	1.9401
23:41:00	139.38	2159.52	0.1000	-1.0000	-86.04	1.9347
23:42:00	139.53	2162.54	0.1167	-0.9331	-83.02	1.9192
23:42:30	139.68	2164.20	0.1250	-0.9031	-81.36	1.9104
23:43:00	139.83	2164.80	0.1333	-0.8751	-80.76	1.9072
23:43:30	139.98	2164.50	0.1417	-0.8487	-81.06	1.9088
23:44:00	140.13	2165.85	0.1500	-0.8239	-79.71	1.9015
23:44:30	140.28	2164.86	0.1583	-0.8004	-80.70	1.9069
23:45:00	140.43	2164.41	0.1667	-0.7782	-81.15	1.9093
23:45:30	140.58	2163.51	0.1750	-0.7570	-82.05	1.9141
23:46:00	140.73	2163.39	0.1833	-0.7368	-82.17	1.9147
23:46:30	141.03	2163.92	0.1917	-0.7175	-81.64	1.9119
23:47:00	141.03	2163.40	0.2000	-0.6990	-82.16	1.9147
23:48:00	141.32	2161.71	0.2167	-0.6642	-83.85	1.9235
23:50:00	142.07	2161.54	0.2500	-0.6021	-84.02	1.9244
23:51:00	142.37	2161.14	0.2667	-0.5740	-84.42	1.9264
23:53:00	142.96	2158.80	0.3000	-0.5229	-86.76	1.9383
23:53:30	142.96	2157.99	0.3083	-0.5110	-87.57	1.9423
23:54:00	143.26	2157.70	0.3167	-0.4994	-87.86	1.9438
23:54:30	143.26	2158.02	0.3250	-0.4881	-87.54	1.9422
23:55:00	143.56	2157.23	0.3333	-0.4771	-88.33	1.9461
23:56:00	143.71	2156.35	0.3500	-0.4559	-89.21	1.9504
23:57:00	143.86	2158.14	0.3667	-0.4357	-87.42	1.9416
23:57:30	144.01	2158.81	0.3750	-0.4260	-86.75	1.9383
23:58:00	144.01	2158.69	0.3833	-0.4164	-86.87	1.9389
23:58:30	144.16	2156.44	0.3917	-0.4071	-89.12	1.9500
23:59:00	144.31	2155.01	0.4000	-0.3979	-90.55	1.9569
00:00:00	144.46	2153.68	0.4167	-0.3802	-91.88	1.9632

16-OCT-84	SDT degF	SDF psia	t-t0 HR	L(t-t0)	P-P0 psia	L(P-P0)
00:02:00	144.75	2153.78	0.4500	-0.3468	-91.78	1.9627
00:03:00	144.90	2153.38	0.4667	-0.3310	-92.18	1.9646
00:03:30	144.90	2152.86	0.4750	-0.3233	-92.70	1.9671
00:05:30	145.20	2154.43	0.5083	-0.2939	-91.13	1.9596
00:06:30	145.20	2154.19	0.5250	-0.2798	-91.37	1.9608
00:07:00	145.20	2154.69	0.5333	-0.2730	-90.87	1.9584
00:07:30	145.35	2151.65	0.5417	-0.2663	-93.91	1.9727
00:08:30	145.35	2150.46	0.5583	-0.2531	-95.10	1.9782
00:09:30	145.50	2151.55	0.5750	-0.2403	-94.01	1.9732
00:11:30	145.65	2154.60	0.6083	-0.2159	-90.96	1.9588
00:12:00	145.65	2155.45	0.6167	-0.2099	-90.11	1.9548
00:13:00	145.80	2154.27	0.6333	-0.1984	-91.29	1.9604
00:13:30	145.80	2153.60	0.6417	-0.1927	-91.96	1.9636
00:14:00	145.80	2153.46	0.6500	-0.1871	-92.10	1.9642
00:14:30	145.80	2152.82	0.6583	-0.1816	-92.74	1.9672
00:15:30	145.95	2153.45	0.6750	-0.1707	-92.11	1.9643
00:17:30	145.95	2152.69	0.7083	-0.1498	-92.87	1.9679
00:18:00	145.95	2151.87	0.7167	-0.1447	-93.69	1.9717
00:18:30	146.10	2149.70	0.7250	-0.1397	-95.86	1.9816
00:19:30	146.10	2149.56	0.7417	-0.1298	-96.00	1.9823
00:20:30	146.10	2150.01	0.7583	-0.1201	-95.55	1.9802
00:21:00	146.10	2150.82	0.7667	-0.1154	-94.74	1.9765
00:21:30	146.10	2150.32	0.7750	-0.1107	-95.24	1.9788
00:22:00	146.10	2140.60	0.7833	-0.1061	-104.96	2.0210
00:22:30	146.24	2132.61	0.7917	-0.1015	-112.95	2.0529
00:23:00	146.24	2138.79	0.8000	-0.0969	-106.77	2.0285
00:23:30	146.24	2142.03	0.8083	-0.0924	-103.53	2.0151
00:24:00	146.24	2140.82	0.8167	-0.0880	-104.74	2.0201
00:24:30	146.24	2141.15	0.8250	-0.0835	-104.41	2.0187
00:25:00	146.24	2144.67	0.8333	-0.0792	-100.89	2.0038
00:25:30	146.24	2144.35	0.8417	-0.0749	-101.21	2.0052
00:26:00	146.24	2145.26	0.8500	-0.0706	-100.30	2.0013
00:26:30	146.39	2144.86	0.8583	-0.0663	-100.70	2.0030
00:27:00	146.39	2145.64	0.8667	-0.0621	-99.92	1.9997
00:27:30	146.39	2147.66	0.8750	-0.0580	-97.90	1.9908
00:28:00	146.24	2147.38	0.8833	-0.0539	-98.18	1.9920
00:28:30	146.39	2148.28	0.8917	-0.0498	-97.28	1.9880
00:29:00	146.39	2147.19	0.9000	-0.0458	-98.37	1.9928
00:30:00	146.39	2147.83	0.9167	-0.0378	-97.73	1.9900
00:30:30	146.39	2147.73	0.9250	-0.0339	-97.83	1.9905
00:31:30	146.54	2149.68	0.9417	-0.0261	-95.88	1.9817
00:32:30	146.39	2150.15	0.9583	-0.0185	-95.42	1.9796
00:33:00	146.39	2150.49	0.9667	-0.0147	-95.07	1.9780
00:34:00	146.54	2148.66	0.9833	-0.0073	-96.90	1.9863
00:35:00	146.69	2148.36	1.0000	0.0000	-97.20	1.9876
00:35:30	146.54	2149.49	1.0083	0.0036	-96.07	1.9826
00:36:30	146.69	2148.52	1.0250	0.0107	-97.04	1.9870
00:37:00	146.54	2148.44	1.0333	0.0142	-97.12	1.9873
00:38:00	146.69	2149.54	1.0500	0.0212	-96.02	1.9824
00:39:00	146.54	2150.09	1.0667	0.0280	-95.47	1.9799
00:39:30	146.54	2150.21	1.0750	0.0314	-95.35	1.9793
00:41:30	146.54	2149.23	1.1083	0.0447	-96.33	1.9838
00:42:30	146.69	2149.64	1.1250	0.0512	-95.92	1.9819
00:43:00	146.69	2149.50	1.1333	0.0544	-96.06	1.9825
00:44:00	146.69	2150.25	1.1500	0.0607	-95.31	1.9792
00:48:00	146.84	2149.40	1.2167	0.0852	-96.16	1.9830
00:50:00	146.69	2149.16	1.2500	0.0969	-96.40	1.9841
00:52:00	146.84	2149.47	1.2833	0.1083	-96.09	1.9827
00:53:00	146.84	2149.28	1.3000	0.1139	-96.28	1.9835
00:54:00	146.84	2149.76	1.3167	0.1195	-95.80	1.9814
00:56:00	146.84	2148.26	1.3500	0.1303	-97.30	1.9881
00:58:00	146.84	2147.28	1.3833	0.1409	-98.28	1.9925

16-OCT-84	SDT degF	SDP psia	t-t0 HR	L(t-t0)	P-P0 psia	L(P-P0)
01:00:00	146.84	2147.78	1.4167	0.1513	-97.78	1.9903
01:01:00	146.99	2148.19	1.4333	0.1563	-97.37	1.9884
01:03:00	146.84	2147.90	1.4667	0.1663	-97.66	1.9897
01:07:00	146.84	2148.38	1.5333	0.1856	-97.18	1.9876
01:09:00	146.84	2148.78	1.5667	0.1950	-96.78	1.9858
01:10:00	146.99	2148.36	1.5833	0.1996	-97.20	1.9877
01:11:00	146.84	2148.62	1.6000	0.2041	-96.94	1.9865
01:12:00	146.84	2148.43	1.6167	0.2086	-97.13	1.9873
01:14:00	146.99	2148.95	1.6500	0.2175	-96.61	1.9850
01:15:00	146.99	2149.16	1.6667	0.2218	-96.40	1.9841
01:19:00	146.99	2148.28	1.7333	0.2389	-97.28	1.9880
01:21:00	146.99	2148.57	1.7667	0.2472	-96.99	1.9867
01:22:00	146.99	2148.86	1.7833	0.2512	-96.70	1.9854
01:24:00	146.99	2148.21	1.8167	0.2593	-97.35	1.9883
01:25:00	146.99	2147.69	1.8333	0.2632	-97.87	1.9907
01:26:00	147.14	2146.69	1.8500	0.2672	-98.87	1.9951
01:26:30	147.14	2146.62	1.8583	0.2691	-98.94	1.9954
01:28:30	147.14	2147.48	1.8917	0.2768	-98.08	1.9916
01:29:30	146.99	2147.38	1.9083	0.2807	-98.18	1.9920
01:31:30	147.14	2148.14	1.9417	0.2882	-97.42	1.9887
01:32:30	147.14	2148.69	1.9583	0.2919	-96.87	1.9862
01:34:30	147.14	2148.60	1.9917	0.2992	-96.96	1.9866
01:36:30	147.14	2148.98	2.0250	0.3064	-96.58	1.9849
01:37:00	147.14	2149.19	2.0333	0.3082	-96.37	1.9839
01:38:00	146.99	2148.73	2.0500	0.3118	-96.83	1.9860
01:39:00	146.99	2149.02	2.0667	0.3153	-96.54	1.9847
01:41:00	147.14	2148.38	2.1000	0.3222	-97.18	1.9876
01:43:00	147.14	2148.52	2.1333	0.3291	-97.04	1.9870
01:47:00	147.29	2149.97	2.2000	0.3424	-95.59	1.9804
01:48:00	147.14	2149.21	2.2167	0.3457	-96.35	1.9839
01:49:00	147.14	2149.23	2.2333	0.3490	-96.33	1.9838
01:49:30	147.29	2149.64	2.2417	0.3506	-95.92	1.9819
01:53:30	147.14	2149.12	2.3083	0.3633	-96.44	1.9842
01:54:30	147.14	2149.02	2.3250	0.3664	-96.54	1.9847
01:55:30	147.14	2148.26	2.3417	0.3695	-97.30	1.9881
01:59:30	147.14	2149.17	2.4083	0.3817	-96.39	1.9840
02:01:30	147.29	2148.86	2.4417	0.3877	-96.70	1.9854
02:02:30	147.29	2148.71	2.4583	0.3906	-96.85	1.9861
02:03:30	147.14	2148.03	2.4750	0.3936	-97.53	1.9891
02:05:30	147.14	2148.50	2.5083	0.3994	-97.06	1.9870
02:09:30	147.29	2148.22	2.5750	0.4108	-97.34	1.9883
02:10:30	147.29	2148.28	2.5917	0.4136	-97.28	1.9880
02:12:30	147.14	2147.22	2.6250	0.4191	-98.34	1.9927
02:13:30	147.29	2147.28	2.6417	0.4219	-98.28	1.9925
02:14:30	147.29	2148.02	2.6583	0.4246	-97.54	1.9892
02:18:30	147.29	2148.24	2.7250	0.4354	-97.32	1.9882
02:22:30	147.29	2147.90	2.7917	0.4459	-97.66	1.9897
02:24:30	147.29	2148.31	2.8250	0.4510	-97.25	1.9879
02:25:30	147.29	2148.29	2.8417	0.4536	-97.27	1.9880
02:26:00	147.29	2148.41	2.8500	0.4548	-97.15	1.9874
02:26:30	147.29	2147.76	2.8583	0.4561	-97.80	1.9903
02:28:30	147.29	2147.97	2.8917	0.4611	-97.59	1.9894
02:29:30	147.29	2147.53	2.9083	0.4636	-98.03	1.9913
02:30:00	CHANGE TO 32/64" ADJ. CHOKE.					
02:30:00	147.29	2143.60	2.9167	0.4649	-101.96	2.0084
02:30:30	147.44	2127.91	2.9250	0.4661	-117.66	2.0706
02:31:00	147.29	2115.55	2.9333	0.4674	-130.01	2.1140
02:31:30	147.29	2107.11	2.9417	0.4686	-138.45	2.1413
02:32:00	147.29	2100.27	2.9500	0.4698	-145.29	2.1622
02:33:00	147.29	2092.49	2.9667	0.4723	-153.07	2.1849
02:33:30	147.44	2089.00	2.9750	0.4735	-156.56	2.1947
02:34:30	147.44	2085.01	2.9917	0.4759	-160.55	2.2056

	CHANGE TO 36/64" ADJ. CHOKE.					
	SDT	SDP	t-t0	L(t-t0)	P-P0	L(P-P0)
16-OCT-84	degF	psia	HR		psia	
02:35:00	147.29	2079.35	3.0000	0.4771	-166.21	2.2206
02:35:30	147.29	2078.23	3.0083	0.4783	-167.33	2.2236
02:36:00	147.44	2077.89	3.0167	0.4795	-167.67	2.2245
02:36:30	147.29	2076.82	3.0250	0.4807	-168.74	2.2272
02:37:30	147.29	2073.92	3.0417	0.4831	-171.64	2.2346
02:38:00	147.29	2073.62	3.0500	0.4843	-171.94	2.2354
02:39:00	147.44	2074.37	3.0667	0.4867	-171.19	2.2335
02:39:30	147.44	2073.78	3.0750	0.4878	-171.78	2.2350
02:40:00	147.44	2073.74	3.0833	0.4890	-171.82	2.2351
02:41:00	147.44	2072.43	3.1000	0.4914	-173.13	2.2384
02:43:00	147.44	2071.10	3.1333	0.4960	-174.46	2.2417
02:44:00	147.44	2069.31	3.1500	0.4983	-176.25	2.2461
02:44:30	147.59	2065.68	3.1583	0.4995	-179.88	2.2550
02:45:00	CHANGE TO 36/64" FIXED CHOKE.					
02:45:00	147.59	2059.95	3.1667	0.5006	-185.61	2.2686
02:45:30	147.59	2060.87	3.1750	0.5017	-184.69	2.2664
02:46:30	147.59	2062.16	3.1917	0.5040	-183.40	2.2634
02:47:00	147.44	2062.30	3.2000	0.5051	-183.26	2.2631
02:47:30	147.59	2063.54	3.2083	0.5063	-182.02	2.2601
02:48:30	147.59	2064.06	3.2250	0.5085	-181.50	2.2589
02:49:30	147.59	2063.91	3.2417	0.5108	-181.65	2.2592
02:50:00	147.59	2063.35	3.2500	0.5119	-182.21	2.2606
02:50:30	147.73	2063.68	3.2583	0.5130	-181.88	2.2598
02:51:00	147.59	2062.78	3.2667	0.5141	-182.78	2.2619
02:51:30	147.73	2063.51	3.2750	0.5152	-182.05	2.2602
02:52:00	147.73	2063.53	3.2833	0.5163	-182.03	2.2602
02:52:30	147.73	2064.11	3.2917	0.5174	-181.45	2.2588
02:53:30	147.59	2063.22	3.3083	0.5196	-182.34	2.2609
02:54:00	147.73	2064.53	3.3167	0.5207	-181.03	2.2578
02:54:30	147.73	2065.03	3.3250	0.5218	-180.53	2.2566
02:55:30	147.73	2065.08	3.3417	0.5240	-180.48	2.2564
02:56:00	147.73	2065.39	3.3500	0.5250	-180.17	2.2557
02:56:30	147.73	2064.84	3.3583	0.5261	-180.72	2.2570
02:57:00	147.88	2064.92	3.3667	0.5272	-180.64	2.2568
02:58:00	147.88	2063.65	3.3833	0.5293	-181.91	2.2599
02:59:00	147.73	2063.27	3.4000	0.5315	-182.29	2.2608
02:59:30	147.73	2062.97	3.4083	0.5325	-182.59	2.2615
03:00:30	147.88	2061.14	3.4250	0.5347	-184.42	2.2658
03:01:00	147.88	2062.54	3.4333	0.5357	-183.02	2.2625
03:02:00	147.73	2061.30	3.4500	0.5378	-184.26	2.2654
03:02:30	147.88	2061.42	3.4583	0.5389	-184.14	2.2652
03:03:30	147.88	2062.54	3.4750	0.5410	-183.02	2.2625
03:04:00	147.88	2063.13	3.4833	0.5420	-182.43	2.2611
03:06:00	147.88	2062.16	3.5167	0.5461	-183.40	2.2634
03:06:30	148.03	2062.25	3.5250	0.5472	-183.31	2.2632
03:07:30	147.88	2061.37	3.5417	0.5492	-184.19	2.2653
03:09:30	148.03	2061.04	3.5750	0.5533	-184.52	2.2660
03:10:30	147.88	2060.47	3.5917	0.5553	-185.09	2.2674
03:11:30	147.88	2059.37	3.6083	0.5573	-186.19	2.2700
03:12:00	148.03	2059.16	3.6167	0.5583	-186.40	2.2705
03:13:00	147.88	2059.76	3.6333	0.5603	-185.80	2.2690
03:13:30	147.88	2061.02	3.6417	0.5613	-184.54	2.2661
03:14:00	147.88	2061.70	3.6500	0.5623	-183.86	2.2645
03:15:00	148.03	2061.68	3.6667	0.5643	-183.88	2.2645
03:15:30	148.03	2060.92	3.6750	0.5653	-184.64	2.2663
03:17:30	148.03	2061.99	3.7083	0.5692	-183.57	2.2638
03:18:30	148.03	2062.45	3.7250	0.5711	-183.11	2.2627
03:20:30	148.03	2061.94	3.7583	0.5750	-183.62	2.2639
03:21:30	148.03	2065.72	3.7750	0.5769	-179.84	2.2549
03:22:00	148.03	2067.01	3.7833	0.5779	-178.55	2.2518
03:22:30	148.03	2067.08	3.7917	0.5788	-178.48	2.2516

16-OCT-84	SDT degF	SDP psia	t-t0 HR	L(t-t0)	P-P0 psia	L(P-P0)
03:23:00	148.03	2067.86	3.8000	0.5798	-177.70	2.2497
03:23:30	148.18	2067.04	3.8083	0.5807	-178.52	2.2517
03:25:30	148.03	2065.92	3.8417	0.5845	-179.64	2.2544
03:26:30	148.03	2066.13	3.8583	0.5864	-179.43	2.2539
03:28:30	148.18	2068.94	3.8917	0.5901	-176.62	2.2470
03:29:30	148.03	2070.86	3.9083	0.5920	-174.70	2.2423
03:30:00	148.18	2069.94	3.9167	0.5929	-175.62	2.2446
03:30:30	148.03	2069.91	3.9250	0.5938	-175.65	2.2447
03:31:30	148.18	2068.82	3.9417	0.5957	-176.74	2.2473
03:33:30	148.18	2069.79	3.9750	0.5993	-175.77	2.2450
03:34:00	148.18	2069.56	3.9833	0.6002	-176.00	2.2455
03:35:00	148.03	2068.11	4.0000	0.6021	-177.45	2.2491
03:35:30	148.18	2067.13	4.0083	0.6030	-178.43	2.2515
03:36:00	148.18	2068.25	4.0167	0.6039	-177.31	2.2487
03:36:30	148.18	2067.48	4.0250	0.6048	-178.08	2.2506
03:37:00	148.18	2068.18	4.0333	0.6057	-177.38	2.2489
03:38:00	148.18	2068.41	4.0500	0.6075	-177.15	2.2483
03:39:00	148.18	2069.10	4.0667	0.6092	-176.46	2.2467
03:40:00	148.18	2068.63	4.0833	0.6110	-176.93	2.2478
03:40:30	148.33	2068.61	4.0917	0.6119	-176.95	2.2478
03:41:30	148.03	2069.65	4.1083	0.6137	-175.91	2.2453
03:42:30	148.18	2070.25	4.1250	0.6154	-175.31	2.2438
03:43:00	148.18	2069.63	4.1333	0.6163	-175.93	2.2453
03:43:30	148.33	2070.39	4.1417	0.6172	-175.17	2.2435
03:44:30	148.18	2069.37	4.1583	0.6189	-176.19	2.2460
03:45:30	148.33	2069.56	4.1750	0.6207	-176.00	2.2455
03:46:30	148.18	2070.37	4.1917	0.6224	-175.19	2.2435
03:48:30	148.33	2070.17	4.2250	0.6258	-175.39	2.2440
03:49:30	148.18	2069.82	4.2417	0.6275	-175.74	2.2449
03:50:00	148.18	2069.37	4.2500	0.6284	-176.19	2.2460
03:52:00	148.18	2069.36	4.2833	0.6318	-176.20	2.2460
03:54:00	148.33	2068.87	4.3167	0.6351	-176.69	2.2472
03:55:00	148.33	2069.30	4.3333	0.6368	-176.26	2.2461
03:55:30	148.18	2069.51	4.3417	0.6377	-176.05	2.2456
03:56:30	148.33	2070.60	4.3583	0.6393	-174.96	2.2429
03:57:30	148.33	2070.89	4.3750	0.6410	-174.67	2.2422
03:58:00	148.33	2071.12	4.3833	0.6418	-174.44	2.2417
03:58:30	148.18	2070.32	4.3917	0.6426	-175.24	2.2436
03:59:30	148.33	2070.13	4.4083	0.6443	-175.43	2.2441
04:01:30	148.18	2070.67	4.4417	0.6475	-174.89	2.2428
04:03:30	148.33	2070.03	4.4750	0.6508	-175.53	2.2444
04:04:00	148.33	2070.05	4.4833	0.6516	-175.51	2.2443
04:04:30	148.33	2070.94	4.4917	0.6524	-174.62	2.2421
04:05:30	148.18	2071.60	4.5083	0.6540	-173.96	2.2405
04:06:30	148.33	2071.13	4.5250	0.6556	-174.43	2.2416
04:07:00	148.18	2071.00	4.5333	0.6564	-174.56	2.2420
04:08:00	148.33	2071.63	4.5500	0.6580	-173.93	2.2404
04:08:30	148.33	2071.46	4.5583	0.6588	-174.10	2.2408
04:10:30	148.33	2072.41	4.5917	0.6620	-173.15	2.2384
04:11:00	148.33	2071.86	4.6000	0.6628	-173.70	2.2398
04:13:00	148.33	2072.10	4.6333	0.6659	-173.46	2.2392
04:14:00	148.33	2071.46	4.6500	0.6675	-174.10	2.2408
04:15:00	148.33	2071.56	4.6667	0.6690	-174.00	2.2405
04:15:30	148.18	2072.00	4.6750	0.6698	-173.56	2.2395
04:17:30	148.33	2071.29	4.7083	0.6729	-174.27	2.2412
04:18:30	148.33	2071.13	4.7250	0.6744	-174.43	2.2416
04:19:30	148.33	2071.70	4.7417	0.6759	-173.86	2.2402
04:20:00	148.33	2071.86	4.7500	0.6767	-173.70	2.2398
04:21:00	148.33	2071.39	4.7667	0.6782	-174.17	2.2410
04:21:30	148.48	2071.05	4.7750	0.6790	-174.51	2.2418
04:22:00	148.33	2071.20	4.7833	0.6797	-174.36	2.2414
04:23:00	148.33	2070.68	4.8000	0.6812	-174.88	2.2427

16-OCT-84	SDT degF	SDP psia	t-t0 HR	L(t-t0)	P-P0 psia	L(P-P0)
04:24:00	148.33	2071.39	4.8167	0.6827	-174.17	2.2410
04:25:00	148.33	2070.70	4.8333	0.6842	-174.86	2.2427
04:25:30	148.48	2070.60	4.8417	0.6850	-174.96	2.2429
04:26:00	148.33	2071.25	4.8500	0.6857	-174.31	2.2413
04:28:00	148.33	2071.49	4.8833	0.6887	-174.07	2.2407
04:29:00	148.48	2069.96	4.9000	0.6902	-175.60	2.2445
04:30:00	148.33	2069.37	4.9167	0.6917	-176.19	2.2460
04:31:00	148.33	2069.84	4.9333	0.6931	-175.72	2.2448
04:31:30	148.48	2069.70	4.9417	0.6939	-175.86	2.2452
04:32:30	148.33	2070.29	4.9583	0.6953	-175.27	2.2437
04:34:30	148.33	2070.44	4.9917	0.6982	-175.12	2.2433
04:36:30	148.33	2069.84	5.0250	0.7011	-175.72	2.2448
04:37:00	148.48	2070.65	5.0333	0.7019	-174.91	2.2428
04:38:00	148.48	2071.20	5.0500	0.7033	-174.36	2.2414
04:38:30	148.48	2071.08	5.0583	0.7040	-174.48	2.2417
04:39:30	148.48	2071.75	5.0750	0.7054	-173.81	2.2401
04:40:30	148.33	2071.96	5.0917	0.7069	-173.60	2.2395
04:41:00	148.33	2072.17	5.1000	0.7076	-173.39	2.2390
04:43:00	148.48	2071.96	5.1333	0.7104	-173.60	2.2395
04:45:00	148.33	2072.62	5.1667	0.7132	-172.94	2.2379
04:45:30	148.48	2072.91	5.1750	0.7139	-172.65	2.2372
04:46:30	148.33	2072.55	5.1917	0.7153	-173.01	2.2381
04:47:00	148.48	2072.36	5.2000	0.7160	-173.20	2.2386
04:47:30	148.48	2073.17	5.2083	0.7167	-172.39	2.2365
04:48:00	148.48	2073.48	5.2167	0.7174	-172.08	2.2357
04:49:00	148.33	2075.19	5.2333	0.7188	-170.37	2.2314
04:50:00	148.33	2076.48	5.2500	0.7202	-169.08	2.2281
04:50:30	148.48	2077.28	5.2583	0.7208	-168.28	2.2260
04:51:30	148.48	2077.47	5.2750	0.7222	-168.09	2.2256
04:53:30	148.33	2078.85	5.3083	0.7250	-166.71	2.2220
04:54:30	148.48	2078.93	5.3250	0.7263	-166.63	2.2217
04:55:00	148.33	2079.07	5.3333	0.7270	-166.49	2.2214
04:56:00	148.48	2080.50	5.3500	0.7284	-165.06	2.2176
04:56:30	148.48	2081.07	5.3583	0.7290	-164.49	2.2161
04:58:30	148.48	2080.68	5.3917	0.7317	-164.88	2.2172
04:59:30	148.48	2079.95	5.4083	0.7331	-165.61	2.2191
05:00:30	148.48	2080.09	5.4250	0.7344	-165.47	2.2187
05:01:00	148.48	2080.31	5.4333	0.7351	-165.25	2.2181
05:02:00	148.48	2080.06	5.4500	0.7364	-165.50	2.2188
05:02:30	148.48	2080.23	5.4583	0.7371	-165.33	2.2184
05:03:00	148.48	2079.87	5.4667	0.7377	-165.69	2.2193
05:03:30	148.48	2080.09	5.4750	0.7384	-165.47	2.2187
05:07:30	148.48	2076.47	5.5417	0.7436	-169.09	2.2281
05:08:30	148.48	2077.16	5.5583	0.7449	-168.40	2.2264
05:09:30	148.48	2077.17	5.5750	0.7462	-168.39	2.2263
05:10:00	148.48	2077.09	5.5833	0.7469	-168.47	2.2265
05:10:30	148.48	2076.40	5.5917	0.7475	-169.16	2.2283
05:11:30	148.48	2076.33	5.6083	0.7488	-169.23	2.2285
05:12:30	148.48	2076.78	5.6250	0.7501	-168.78	2.2273
05:14:30	148.48	2075.77	5.6583	0.7527	-169.79	2.2299
05:15:30	148.63	2075.77	5.6750	0.7540	-169.79	2.2299
05:16:00	148.48	2075.17	5.6833	0.7546	-170.39	2.2314
05:17:00	148.63	2075.38	5.7000	0.7559	-170.18	2.2309
05:17:30	148.33	2075.64	5.7083	0.7565	-169.92	2.2303
05:18:30	148.48	2074.93	5.7250	0.7578	-170.63	2.2321
05:19:00	148.48	2074.81	5.7333	0.7584	-170.75	2.2324
05:19:30	148.48	2075.52	5.7417	0.7590	-170.04	2.2306
05:20:30	148.48	2075.26	5.7583	0.7603	-170.30	2.2312
05:21:00	148.48	2075.05	5.7667	0.7609	-170.51	2.2317
05:22:00	148.48	2075.65	5.7833	0.7622	-169.91	2.2302
05:22:30	148.48	2076.24	5.7917	0.7628	-169.32	2.2287
05:24:30	148.48	2076.60	5.8250	0.7653	-168.96	2.2278

16-OCT-84	SDT degF	SDP psia	t-t0 HR	L(t-t0)	P-P0 psia	L(P-P0)
05:25:00	148.48	2076.88	5.8333	0.7659	-168.68	2.2271
05:26:00	148.48	2076.48	5.8500	0.7672	-169.08	2.2281
05:26:30	148.48	2076.97	5.8583	0.7678	-168.59	2.2268
05:27:00	148.48	2076.66	5.8667	0.7684	-168.90	2.2276
05:28:00	148.48	2076.76	5.8833	0.7696	-168.80	2.2274
05:28:30	148.48	2076.05	5.8917	0.7702	-169.51	2.2292
05:29:30	148.63	2075.88	5.9083	0.7715	-169.68	2.2296
05:30:30	148.48	2076.24	5.9250	0.7727	-169.32	2.2287
05:31:00	148.48	2076.28	5.9333	0.7733	-169.28	2.2286
05:32:00	148.48	2074.88	5.9500	0.7745	-170.68	2.2322
05:33:00	148.48	2075.02	5.9667	0.7757	-170.54	2.2318
05:33:30	148.48	2076.02	5.9750	0.7763	-169.54	2.2293
05:34:30	148.48	2075.88	5.9917	0.7775	-169.68	2.2296
05:35:00	148.48	2075.90	6.0000	0.7782	-169.66	2.2296
05:36:00	148.48	2075.10	6.0167	0.7794	-170.46	2.2316
05:37:00	148.48	2075.03	6.0333	0.7806	-170.53	2.2318
05:37:30	148.48	2075.83	6.0417	0.7812	-169.73	2.2298
05:38:30	148.48	2076.15	6.0583	0.7824	-169.41	2.2289
05:40:30	148.63	2076.02	6.0917	0.7847	-169.54	2.2293
05:41:30	148.48	2075.67	6.1083	0.7859	-169.89	2.2302
05:42:30	148.63	2075.95	6.1250	0.7871	-169.61	2.2295
05:44:30	148.63	2075.69	6.1583	0.7895	-169.87	2.2301
05:45:30	148.63	2075.64	6.1750	0.7906	-169.92	2.2303
05:46:00	148.63	2075.58	6.1833	0.7912	-169.98	2.2304
05:46:30	148.63	2076.31	6.1917	0.7918	-169.25	2.2285
05:48:30	148.63	2076.41	6.2250	0.7941	-169.15	2.2283
05:49:00	148.48	2076.12	6.2333	0.7947	-169.44	2.2290
05:50:00	148.63	2076.22	6.2500	0.7959	-169.34	2.2288
05:51:00	148.63	2075.76	6.2667	0.7970	-169.80	2.2299
05:55:00	148.63	2076.08	6.3333	0.8016	-169.48	2.2291
05:56:00	148.48	2076.24	6.3500	0.8028	-169.32	2.2287
05:56:30	148.63	2075.91	6.3583	0.8033	-169.65	2.2295
05:57:00	148.63	2076.02	6.3667	0.8039	-169.54	2.2293
05:58:00	148.48	2075.67	6.3833	0.8050	-169.89	2.2302
05:59:00	148.63	2075.95	6.4000	0.8062	-169.61	2.2295
05:59:30	148.48	2076.21	6.4083	0.8067	-169.35	2.2288
06:03:30	148.63	2076.41	6.4750	0.8112	-169.15	2.2283
06:05:30	148.63	2076.52	6.5083	0.8135	-169.04	2.2280
06:06:30	148.48	2075.90	6.5250	0.8146	-169.66	2.2296
06:07:30	148.63	2077.03	6.5417	0.8157	-168.53	2.2267
06:08:00	148.48	2077.52	6.5500	0.8162	-168.04	2.2254
06:10:00	148.63	2076.79	6.5833	0.8184	-168.77	2.2273
06:11:00	148.63	2076.59	6.6000	0.8195	-168.97	2.2278
06:11:30	148.63	2076.72	6.6083	0.8201	-168.84	2.2275
06:12:00	148.63	2075.93	6.6167	0.8206	-169.63	2.2295
06:13:00	148.63	2075.79	6.6333	0.8217	-169.77	2.2299
06:13:30	148.63	2076.33	6.6417	0.8223	-169.23	2.2285
06:14:00	148.48	2076.00	6.6500	0.8228	-169.56	2.2293
06:14:30	148.63	2076.71	6.6583	0.8234	-168.85	2.2275
06:15:00	148.63	2076.41	6.6667	0.8239	-169.15	2.2283
06:16:00	148.63	2077.00	6.6833	0.8250	-168.56	2.2268
06:18:00	148.63	2076.74	6.7167	0.8272	-168.82	2.2274
06:19:00	148.48	2077.03	6.7333	0.8282	-168.53	2.2267
06:20:00	148.63	2076.81	6.7500	0.8293	-168.75	2.2272
06:20:30	148.63	2077.72	6.7583	0.8298	-167.84	2.2249
06:21:00	148.63	2077.29	6.7667	0.8304	-168.27	2.2260
06:22:00	148.63	2077.71	6.7833	0.8314	-167.85	2.2249
06:23:00	148.63	2077.60	6.8000	0.8325	-167.96	2.2252
06:23:30	148.63	2077.29	6.8083	0.8330	-168.27	2.2260
06:25:30	148.63	2077.88	6.8417	0.8352	-167.68	2.2245
06:27:30	148.63	2077.79	6.8750	0.8373	-167.77	2.2247
06:28:30	148.63	2078.33	6.8917	0.8383	-167.23	2.2233

16-OCT-84	SDT degF	SDP psia	t-t0 HR	L(t-t0)	P-P0 psia	L(P-P0)
06:29:30	148.63	2078.26	6.9083	0.8394	-167.30	2.2235
06:30:00	148.63	2078.00	6.9167	0.8399	-167.56	2.2242
06:30:30	148.63	2078.36	6.9250	0.8404	-167.20	2.2232
06:31:00	148.63	2079.80	6.9333	0.8409	-165.76	2.2195
06:31:30	148.48	2079.26	6.9417	0.8415	-166.30	2.2209
06:32:00	148.63	2077.78	6.9500	0.8420	-167.78	2.2248
06:34:00	148.63	2078.28	6.9833	0.8441	-167.28	2.2235
06:35:00	148.63	2078.41	7.0000	0.8451	-167.15	2.2231
06:35:30	148.63	2078.69	7.0083	0.8456	-166.87	2.2224
06:36:30	148.48	2075.03	7.0250	0.8466	-170.53	2.2318
06:37:30	148.63	2076.02	7.0417	0.8477	-169.54	2.2293
06:38:00	148.63	2072.56	7.0500	0.8482	-173.00	2.2380
06:38:30	148.48	2076.97	7.0583	0.8487	-168.59	2.2268
06:39:30	148.63	2078.48	7.0750	0.8497	-167.08	2.2229
06:40:00	148.63	2079.85	7.0833	0.8502	-165.71	2.2194
06:40:30	148.63	2080.07	7.0917	0.8507	-165.49	2.2188
06:41:00	148.63	2079.33	7.1000	0.8513	-166.23	2.2207
06:41:30	148.63	2078.07	7.1083	0.8518	-167.49	2.2240
06:42:00	148.63	2078.41	7.1167	0.8523	-167.15	2.2231
06:42:30	148.63	2077.31	7.1250	0.8528	-168.25	2.2260
06:43:00	148.63	2076.90	7.1333	0.8533	-168.66	2.2270
06:44:00	148.63	2076.91	7.1500	0.8543	-168.65	2.2270
06:45:00	148.63	2077.93	7.1667	0.8553	-167.63	2.2243
06:45:30	148.63	2078.29	7.1750	0.8558	-167.27	2.2234
06:46:00	148.63	2078.14	7.1833	0.8563	-167.42	2.2238
06:46:30	148.63	2078.59	7.1917	0.8568	-166.97	2.2226
06:47:00	148.63	2078.43	7.2000	0.8573	-167.13	2.2230
06:47:30	148.48	2077.74	7.2083	0.8578	-167.82	2.2248
06:48:30	148.63	2077.83	7.2250	0.8588	-167.73	2.2246
06:49:00	148.63	2078.41	7.2333	0.8593	-167.15	2.2231
06:49:30	148.63	2077.41	7.2417	0.8598	-168.15	2.2257
06:50:00	148.63	2077.14	7.2500	0.8603	-168.42	2.2264
06:50:30	148.63	2077.53	7.2583	0.8608	-168.03	2.2254
06:51:00	148.63	2078.41	7.2667	0.8613	-167.15	2.2231
06:53:00	148.63	2077.84	7.3000	0.8633	-167.72	2.2246
06:53:30	148.63	2079.10	7.3083	0.8638	-166.46	2.2213
06:54:00	148.63	2078.36	7.3167	0.8643	-167.20	2.2232
06:55:00	148.63	2077.76	7.3333	0.8653	-167.80	2.2248
06:56:00	148.63	2077.97	7.3500	0.8663	-167.59	2.2243
06:56:30	148.63	2078.41	7.3583	0.8668	-167.15	2.2231
06:57:30	148.63	2077.84	7.3750	0.8678	-167.72	2.2246
06:58:30	148.63	2077.76	7.3917	0.8687	-167.80	2.2248
06:59:30	148.63	2077.16	7.4083	0.8697	-168.41	2.2264
07:00:00	148.63	2071.98	7.4167	0.8702	-173.58	2.2395
07:00:30	148.63	2067.66	7.4250	0.8707	-177.90	2.2502
07:01:00	148.63	2071.67	7.4333	0.8712	-173.89	2.2403
07:01:30	148.63	2074.32	7.4417	0.8717	-171.24	2.2336
07:02:00	148.63	2077.78	7.4500	0.8722	-167.78	2.2248
07:02:30	148.63	2080.12	7.4583	0.8726	-165.44	2.2186
07:03:00	148.63	2080.73	7.4667	0.8731	-164.83	2.2170
07:04:00	148.63	2084.94	7.4833	0.8741	-160.62	2.2058
07:04:30	148.63	2085.90	7.4917	0.8746	-159.66	2.2032
07:05:00	148.63	2085.90	7.5000	0.8751	-159.66	2.2032
07:05:30	148.63	2086.61	7.5083	0.8755	-158.95	2.2013
07:06:30	148.63	2089.15	7.5250	0.8765	-156.41	2.1943
07:07:30	148.63	2092.57	7.5417	0.8775	-152.99	2.1847
07:08:30	148.63	2088.34	7.5583	0.8784	-157.22	2.1965
07:09:00	148.63	2089.08	7.5667	0.8789	-156.48	2.1945
07:09:30	148.63	2087.11	7.5750	0.8794	-158.45	2.1999
07:10:00	148.63	2083.49	7.5833	0.8799	-162.07	2.2097
07:10:30	148.63	2089.17	7.5917	0.8803	-156.39	2.1942
07:11:00	148.63	2092.96	7.6000	0.8808	-152.60	2.1835

16-OCT-84	SDT degF	SDP psia	t-t0 HR	L(t-t0)	P-P0 psia	L(P-P0)
07:11:30	148.63	2092.89	7.6083	0.8813	-152.67	2.1837
07:12:00	148.63	2092.34	7.6167	0.8818	-153.22	2.1853
07:12:30	148.63	2097.24	7.6250	0.8822	-148.32	2.1712
07:13:00	148.63	2095.76	7.6333	0.8827	-149.80	2.1755
07:13:30	148.63	2093.22	7.6417	0.8832	-152.34	2.1828
07:14:00	148.63	2094.76	7.6500	0.8837	-150.80	2.1784
07:14:30	148.63	2093.64	7.6583	0.8841	-151.92	2.1816
07:15:00	148.63	2095.50	7.6667	0.8846	-150.06	2.1763
07:16:00	148.63	2093.36	7.6833	0.8855	-152.20	2.1824
07:16:30	148.63	2095.26	7.6917	0.8860	-150.30	2.1770
07:17:00	148.63	2096.31	7.7000	0.8865	-149.25	2.1739
07:17:30	148.63	2095.73	7.7083	0.8870	-149.83	2.1756
07:18:00	148.63	2094.22	7.7167	0.8874	-151.34	2.1799
07:18:30	148.78	2095.36	7.7250	0.8879	-150.20	2.1767
07:19:00	148.63	2095.86	7.7333	0.8884	-149.70	2.1752
07:19:30	148.63	2093.83	7.7417	0.8888	-151.73	2.1811
07:20:00	148.63	2094.91	7.7500	0.8893	-150.65	2.1780
07:20:30	148.63	2093.78	7.7583	0.8898	-151.78	2.1812
07:21:00	148.63	2093.33	7.7667	0.8902	-152.23	2.1825
07:21:30	148.63	2093.74	7.7750	0.8907	-151.82	2.1813
07:22:30	148.63	2093.05	7.7917	0.8916	-152.51	2.1833
07:23:30	148.63	2094.36	7.8083	0.8926	-151.20	2.1795
07:24:00	148.78	2093.71	7.8167	0.8930	-151.85	2.1814
07:24:30	148.63	2091.55	7.8250	0.8935	-154.01	2.1876
07:25:00	148.48	2089.84	7.8333	0.8939	-155.72	2.1923
07:25:30	148.63	2093.72	7.8417	0.8944	-151.84	2.1814
07:26:00	148.63	2090.91	7.8500	0.8949	-154.65	2.1894
07:26:30	148.63	2092.69	7.8583	0.8953	-152.87	2.1843
07:27:30	148.63	2092.81	7.8750	0.8963	-152.75	2.1840
07:28:00	148.63	2090.13	7.8833	0.8967	-155.43	2.1915
07:28:30	148.63	2098.87	7.8917	0.8972	-146.69	2.1664
07:29:00	148.63	2096.05	7.9000	0.8976	-149.51	2.1747
07:29:30	148.63	2093.83	7.9083	0.8981	-151.73	2.1811
07:30:00	148.78	2093.22	7.9167	0.8985	-152.34	2.1828
07:30:30	148.78	2093.95	7.9250	0.8990	-151.61	2.1807
07:31:00	148.63	2093.52	7.9333	0.8995	-152.04	2.1820
07:32:00	148.63	2094.03	7.9500	0.9004	-151.53	2.1805
07:32:30	148.63	2093.84	7.9583	0.9008	-151.72	2.1810
07:33:30	148.78	2091.93	7.9750	0.9017	-153.63	2.1865
07:34:00	148.78	2089.70	7.9833	0.9022	-155.86	2.1927
07:34:30	148.63	2086.47	7.9917	0.9026	-159.09	2.2016
07:35:00	148.78	2084.13	8.0000	0.9031	-161.43	2.2080
07:35:30	148.63	2088.80	8.0083	0.9035	-156.76	2.1952
07:36:00	148.63	2091.20	8.0167	0.9040	-154.36	2.1885
07:36:30	148.63	2090.70	8.0250	0.9044	-154.86	2.1899
07:37:30	148.63	2094.81	8.0417	0.9053	-150.75	2.1783
07:38:00	148.78	2092.81	8.0500	0.9058	-152.75	2.1840
07:38:30	148.63	2089.96	8.0583	0.9062	-155.60	2.1920
07:39:00	148.63	2093.53	8.0667	0.9067	-152.03	2.1819
07:40:00	148.63	2093.00	8.0833	0.9076	-152.56	2.1834
07:40:30	148.78	2093.17	8.0917	0.9080	-152.39	2.1830
07:41:00	148.63	2094.03	8.1000	0.9085	-151.53	2.1805
07:41:30	148.78	2093.53	8.1083	0.9089	-152.03	2.1819
07:42:00	148.78	2091.77	8.1167	0.9094	-153.79	2.1869
07:42:30	148.63	2087.23	8.1250	0.9098	-158.33	2.1996
07:43:00	148.63	2084.61	8.1333	0.9103	-160.95	2.2067
07:43:30	148.63	2090.08	8.1417	0.9107	-155.48	2.1917
07:44:30	148.63	2089.32	8.1583	0.9116	-156.24	2.1938
07:45:30	148.63	2093.14	8.1750	0.9125	-152.42	2.1831
07:46:00	148.63	2092.65	8.1833	0.9129	-152.91	2.1844
07:46:30	148.63	2089.37	8.1917	0.9134	-156.19	2.1936
07:47:00	148.63	2088.48	8.2000	0.9138	-157.08	2.1961

16-OCT-84	SDT degF	SDP psia	t-t0 HR	L(t-t0)	P-P0 psia	L(P-P0)
07:47:30	148.78	2091.70	8.2083	0.9143	-153.86	2.1871
07:48:00	148.63	2088.36	8.2167	0.9147	-157.20	2.1965
07:48:30	148.63	2091.41	8.2250	0.9151	-154.15	2.1879
07:49:00	148.78	2090.69	8.2333	0.9156	-154.87	2.1900
07:49:30	148.63	2090.84	8.2417	0.9160	-154.72	2.1895
07:50:00	148.63	2093.86	8.2500	0.9165	-151.70	2.1810
07:50:30	148.63	2095.85	8.2583	0.9169	-149.71	2.1753
07:51:00	148.63	2093.90	8.2667	0.9173	-151.66	2.1809
07:51:30	148.63	2093.97	8.2750	0.9178	-151.59	2.1807
07:52:00	148.63	2090.06	8.2833	0.9182	-155.50	2.1917
07:52:30	148.63	2087.22	8.2917	0.9186	-158.34	2.1996
07:53:00	148.63	2090.44	8.3000	0.9191	-155.12	2.1907
07:53:30	148.63	2085.72	8.3083	0.9195	-159.84	2.2037
07:54:00	148.78	2089.11	8.3167	0.9199	-156.45	2.1944
07:54:30	148.63	2095.03	8.3250	0.9204	-150.53	2.1776
07:55:00	148.78	2096.69	8.3333	0.9208	-148.87	2.1728
07:55:30	148.78	2095.38	8.3417	0.9213	-150.18	2.1766
07:56:00	148.63	2095.59	8.3500	0.9217	-149.97	2.1760
07:56:30	148.63	2094.52	8.3583	0.9221	-151.04	2.1791
07:57:00	148.63	2089.29	8.3667	0.9226	-156.27	2.1939
07:57:30	148.63	2093.50	8.3750	0.9230	-152.06	2.1820
07:58:00	148.78	2088.56	8.3833	0.9234	-157.00	2.1959
07:58:30	148.63	2086.84	8.3917	0.9238	-158.72	2.2006
07:59:00	148.78	2091.76	8.4000	0.9243	-153.80	2.1870
07:59:30	148.63	2091.88	8.4083	0.9247	-153.68	2.1866
08:00:00	148.63	2093.74	8.4167	0.9251	-151.82	2.1813
08:00:30	148.63	2094.43	8.4250	0.9256	-151.13	2.1793
08:01:00	148.78	2094.33	8.4333	0.9260	-151.23	2.1796
08:01:30	148.63	2093.07	8.4417	0.9264	-152.49	2.1832
08:02:00	148.78	2096.52	8.4500	0.9269	-149.04	2.1733
08:02:30	148.78	2094.34	8.4583	0.9273	-151.22	2.1796
08:03:00	148.78	2096.90	8.4667	0.9277	-148.66	2.1722
08:03:30	148.78	2096.90	8.4750	0.9281	-148.66	2.1722
08:04:00	148.63	2096.26	8.4833	0.9286	-149.30	2.1741
08:04:30	148.63	2095.17	8.4917	0.9290	-150.39	2.1772
08:05:00	148.63	2096.40	8.5000	0.9294	-149.16	2.1737
08:05:30	148.63	2094.74	8.5083	0.9298	-150.82	2.1785
08:06:00	148.78	2091.81	8.5167	0.9303	-153.75	2.1868
08:06:30	148.63	2087.70	8.5250	0.9307	-157.86	2.1983
08:07:00	148.63	2088.82	8.5333	0.9311	-156.74	2.1952
08:07:30	148.63	2090.82	8.5417	0.9315	-154.74	2.1896
08:08:00	148.63	2089.68	8.5500	0.9320	-155.88	2.1928
08:08:30	148.78	2087.75	8.5583	0.9324	-157.81	2.1981
08:09:00	148.78	2090.00	8.5750	0.9332	-155.56	2.1919
08:10:00	148.78	2091.46	8.5833	0.9337	-154.10	2.1878
08:10:30	148.63	2093.97	8.5917	0.9341	-151.59	2.1807
08:11:00	148.63	2092.76	8.6000	0.9345	-152.80	2.1841
08:12:00	148.78	2095.97	8.6167	0.9353	-149.59	2.1749
08:12:30	148.63	2094.81	8.6250	0.9358	-150.75	2.1783
08:13:00	148.63	2094.78	8.6333	0.9362	-150.78	2.1784
08:13:30	148.63	2096.09	8.6417	0.9366	-149.47	2.1746
08:14:30	148.63	2087.32	8.6583	0.9374	-158.24	2.1993
08:15:00	148.63	2090.89	8.6667	0.9379	-154.67	2.1894
08:15:30	148.63	2091.58	8.6750	0.9383	-153.98	2.1875
08:16:00	148.78	2088.72	8.6833	0.9387	-156.84	2.1955
08:16:30	148.78	2091.22	8.6917	0.9391	-154.34	2.1885
08:17:00	148.63	2094.95	8.7000	0.9395	-150.61	2.1779
08:17:30	148.63	2092.81	8.7083	0.9399	-152.75	2.1840
08:18:00	148.63	2092.96	8.7167	0.9404	-152.60	2.1835
08:18:30	148.78	2093.64	8.7250	0.9408	-151.92	2.1816
08:19:00	148.63	2091.50	8.7333	0.9412	-154.06	2.1877
08:19:30	148.63	2088.63	8.7417	0.9416	-156.93	2.1957

16-OCT-84	SDT degF	SDP psia	t-t0 HR	L(t-t0)	P-P0 psia	L(P-P0)
08:20:00	148.63	2086.97	8.7500	0.9420	-158.59	2.2003
08:20:30	148.63	2092.93	8.7583	0.9424	-152.63	2.1836
08:21:00	148.63	2090.17	8.7667	0.9428	-155.39	2.1914
08:21:30	148.78	2091.25	8.7750	0.9432	-154.31	2.1884
08:22:00	148.78	2094.72	8.7833	0.9437	-150.84	2.1785
08:22:30	148.63	2094.81	8.7917	0.9441	-150.75	2.1783
08:23:00	148.63	2092.74	8.8000	0.9445	-152.82	2.1842
08:23:30	148.78	2094.41	8.8083	0.9449	-151.15	2.1794
08:24:00	148.78	2092.31	8.8167	0.9453	-153.25	2.1854
08:24:30	148.78	2089.39	8.8250	0.9457	-156.17	2.1936
08:25:00	148.63	2091.77	8.8333	0.9461	-153.79	2.1869
08:25:30	148.63	2090.89	8.8417	0.9465	-154.67	2.1894
08:26:00	148.78	2087.94	8.8500	0.9469	-157.62	2.1976
08:26:30	148.63	2089.37	8.8583	0.9474	-156.19	2.1936
08:27:00	148.63	2090.24	8.8667	0.9478	-155.32	2.1912
08:28:00	148.63	2089.75	8.8833	0.9486	-155.81	2.1926
08:29:00	148.78	2091.20	8.9000	0.9494	-154.36	2.1885
08:29:30	148.63	2091.65	8.9083	0.9498	-153.91	2.1873
08:30:00	CHANGE TO 36/64" ADJ. CHOKE					
08:30:00	148.63	2091.69	8.9167	0.9502	-153.87	2.1872
08:32:00	148.63	2085.80	8.9500	0.9518	-159.76	2.2035
08:32:30	148.63	2080.35	8.9583	0.9522	-165.21	2.2180
08:33:00	CHANGE TO 48/64" ADJ. CHOKE.					
08:33:00	148.78	2076.02	8.9667	0.9526	-169.54	2.2293
08:33:30	148.63	2073.84	8.9750	0.9530	-171.72	2.2348
08:34:00	148.63	2070.20	8.9833	0.9534	-175.36	2.2439
08:34:30	148.78	2067.92	8.9917	0.9538	-177.64	2.2495
08:35:00	148.63	2066.47	9.0000	0.9542	-179.09	2.2531
08:35:30	148.63	2062.00	9.0083	0.9546	-183.56	2.2638
08:36:30	148.78	2054.39	9.0250	0.9554	-191.17	2.2814
08:37:00	148.63	2051.53	9.0333	0.9558	-194.03	2.2879
08:37:30	148.78	2044.76	9.0417	0.9562	-200.80	2.3028
08:38:00	CHANGE TO 60/64" ADJ. CHOKE.					
08:38:00	148.78	2038.46	9.0500	0.9566	-207.10	2.3162
08:38:30	148.78	2042.43	9.0583	0.9570	-203.13	2.3078
08:39:00	148.78	2034.55	9.0667	0.9574	-211.01	2.3243
08:39:30	148.63	2031.06	9.0750	0.9578	-214.50	2.3314
08:40:00	148.63	2032.49	9.0833	0.9582	-213.07	2.3285
08:40:30	148.63	2037.43	9.0917	0.9586	-208.13	2.3183
08:41:00	148.63	2038.81	9.1000	0.9590	-206.75	2.3154
08:41:30	148.78	2041.09	9.1083	0.9594	-204.47	2.3106
08:42:00	CHANGE TO 68/64" ADJ. CHOKE.					
08:42:00	148.63	2038.62	9.1167	0.9598	-206.94	2.3158
08:42:30	148.63	2034.13	9.1250	0.9602	-211.43	2.3252
08:43:00	148.78	2031.94	9.1333	0.9606	-213.62	2.3296
08:43:30	148.78	2031.32	9.1417	0.9610	-214.24	2.3309
08:44:00	148.78	2025.44	9.1500	0.9614	-220.12	2.3427
08:44:30	148.78	2029.08	9.1583	0.9618	-216.48	2.3354
08:45:00	148.63	2028.78	9.1667	0.9622	-216.78	2.3360
08:45:30	148.63	2020.64	9.1750	0.9626	-224.92	2.3520
08:46:00	148.78	2020.61	9.1833	0.9630	-224.95	2.3521
08:46:30	148.63	2027.04	9.1917	0.9634	-218.52	2.3395
08:47:00	148.78	2024.95	9.2000	0.9638	-220.61	2.3436
08:47:30	148.78	2024.02	9.2083	0.9642	-221.54	2.3454
08:48:00	148.78	2028.34	9.2167	0.9646	-217.22	2.3369
08:48:30	148.63	2028.03	9.2250	0.9650	-217.53	2.3375
08:49:00	148.78	2025.57	9.2333	0.9654	-219.99	2.3424
08:49:30	148.78	2015.08	9.2417	0.9658	-230.48	2.3626
08:50:00	148.78	2015.48	9.2500	0.9661	-230.08	2.3619
08:51:00	148.78	2015.12	9.2667	0.9669	-230.44	2.3626
08:51:30	148.78	2016.08	9.2750	0.9673	-229.48	2.3607
08:52:00	148.78	2011.89	9.2833	0.9677	-233.67	2.3686

16-OCT-84	SDT degF	SDP psia	t-t0 HR	L(t-t0)	P-P0 psia	L(P-P0)
08:52:30	148.78	2013.48	9.2917	0.9681	-232.08	2.3656
08:53:00	148.78	2015.83	9.3000	0.9685	-229.73	2.3612
08:53:30	148.78	2019.04	9.3083	0.9689	-226.52	2.3551
08:54:00	148.78	2019.45	9.3167	0.9693	-226.11	2.3543
08:54:30	148.78	2026.07	9.3250	0.9696	-219.49	2.3414
08:55:00	148.93	2028.02	9.3333	0.9700	-217.54	2.3375
08:55:30	148.93	2027.47	9.3417	0.9704	-218.09	2.3386
08:56:00	148.93	2025.26	9.3500	0.9708	-220.30	2.3430
08:56:30	148.78	2015.93	9.3583	0.9712	-229.63	2.3610
08:57:00	148.78	2016.67	9.3667	0.9716	-228.89	2.3596
08:57:30	148.78	2023.16	9.3750	0.9720	-222.40	2.3471
08:58:00	148.78	2023.57	9.3833	0.9724	-221.99	2.3463
08:58:30	148.93	2018.50	9.3917	0.9727	-227.06	2.3561
08:59:00	148.78	2016.26	9.4000	0.9731	-229.30	2.3604
08:59:30	148.93	2017.98	9.4083	0.9735	-227.58	2.3571
09:00:00	148.93	2013.94	9.4167	0.9739	-231.62	2.3648
09:00:30	148.93	2022.42	9.4250	0.9743	-223.14	2.3486
09:01:00	148.93	2026.59	9.4333	0.9747	-218.97	2.3404
09:01:30	148.93	2019.95	9.4417	0.9750	-225.61	2.3534
09:02:00	148.93	2021.36	9.4500	0.9754	-224.20	2.3506
09:02:30	148.78	2027.14	9.4583	0.9758	-218.42	2.3393
09:03:00	148.93	2027.68	9.4667	0.9762	-217.88	2.3382
09:03:30	148.78	2022.61	9.4750	0.9766	-222.95	2.3482
09:04:00	148.93	2027.66	9.4833	0.9770	-217.90	2.3383
09:04:30	148.78	2033.94	9.4917	0.9773	-211.62	2.3256
09:05:00	148.93	2025.30	9.5000	0.9777	-220.26	2.3429
09:06:00	148.78	2025.06	9.5167	0.9785	-220.50	2.3434
09:06:30	148.93	2028.56	9.5250	0.9789	-217.00	2.3365
09:07:00	148.93	2034.56	9.5333	0.9792	-211.00	2.3243
09:07:30	148.78	2029.70	9.5417	0.9796	-215.86	2.3342
09:08:00	148.93	2030.56	9.5500	0.9800	-215.00	2.3324
09:08:30	148.78	2022.16	9.5583	0.9804	-223.40	2.3491
09:09:00	148.93	2021.76	9.5667	0.9808	-223.80	2.3499
09:09:30	148.93	2029.42	9.5750	0.9811	-216.14	2.3347
09:10:00	148.78	2030.35	9.5833	0.9815	-215.21	2.3329
09:11:00	148.93	2019.57	9.6000	0.9823	-225.99	2.3541
09:11:30	148.93	2028.06	9.6083	0.9826	-217.50	2.3375
09:12:00	148.78	2031.73	9.6167	0.9830	-213.83	2.3301
09:12:30	148.93	2032.27	9.6250	0.9834	-213.29	2.3290
09:13:00	148.93	2023.92	9.6333	0.9838	-221.64	2.3457
09:13:30	148.93	2022.42	9.6417	0.9842	-223.14	2.3486
09:14:00	148.93	2022.19	9.6500	0.9845	-223.37	2.3490
09:15:00	148.93	2023.61	9.6667	0.9853	-221.95	2.3463
09:15:30	148.93	2026.61	9.6750	0.9857	-218.95	2.3403
09:16:00	148.93	2026.99	9.6833	0.9860	-218.57	2.3396
09:16:30	148.93	2026.30	9.6917	0.9864	-219.26	2.3410
09:17:00	148.78	2027.21	9.7000	0.9868	-218.35	2.3391
09:18:00	148.93	2036.96	9.7167	0.9875	-208.60	2.3193
09:18:30	148.93	2036.86	9.7250	0.9879	-208.70	2.3195
09:19:00	148.93	2037.34	9.7333	0.9883	-208.22	2.3185
09:19:30	148.93	2031.08	9.7417	0.9886	-214.48	2.3314
09:20:00	148.93	2025.88	9.7500	0.9890	-219.68	2.3418
09:20:30	148.93	2030.34	9.7583	0.9894	-215.22	2.3329
09:21:00	148.93	2031.16	9.7667	0.9897	-214.40	2.3312
09:21:30	148.93	2028.94	9.7750	0.9901	-216.62	2.3357
09:22:00	148.93	2027.70	9.7833	0.9905	-217.86	2.3382
09:22:30	148.93	2029.47	9.7917	0.9909	-216.09	2.3346
09:23:00	148.93	2031.96	9.8000	0.9912	-213.60	2.3296
09:23:30	149.08	2031.23	9.8083	0.9916	-214.33	2.3311
09:24:30	148.93	2030.97	9.8250	0.9923	-214.59	2.3316
09:25:00	148.93	2030.21	9.8333	0.9927	-215.35	2.3331
09:26:00	148.78	2038.17	9.8500	0.9934	-207.39	2.3168

16-OCT-84	SDT degF	SDP psia	t-t0 HR	L(t-t0)	P-P0 psia	L(P-P0)
09:26:30	148.93	2035.01	9.8583	0.9938	-210.55	2.3234
09:27:00	148.93	2026.40	9.8667	0.9942	-219.16	2.3408
09:27:30	148.93	2030.08	9.8750	0.9945	-215.48	2.3334
09:28:00	148.93	2031.01	9.8833	0.9949	-214.55	2.3315
09:28:30	149.08	2030.46	9.8917	0.9953	-215.10	2.3326
09:29:00	148.93	2029.18	9.9000	0.9956	-216.38	2.3352
09:30:00	148.93	2028.87	9.9167	0.9964	-216.69	2.3358
09:30:30	148.93	2028.80	9.9250	0.9967	-216.76	2.3360
09:31:00	148.78	2029.28	9.9333	0.9971	-216.28	2.3350
09:31:30	148.93	2030.91	9.9417	0.9975	-214.65	2.3317
09:32:00	149.08	2029.96	9.9500	0.9978	-215.60	2.3337
09:32:30	148.93	2028.39	9.9583	0.9982	-217.17	2.3368
09:33:00	148.93	2031.30	9.9667	0.9985	-214.26	2.3309
09:33:30	149.08	2035.65	9.9750	0.9989	-209.91	2.3220
09:34:00	148.93	2037.03	9.9833	0.9993	-208.53	2.3192
09:34:30	148.93	2033.08	9.9917	0.9996	-212.48	2.3273
09:35:00	149.08	2024.92	10.0000	1.0000	-220.64	2.3437
09:35:30	148.93	2021.00	10.0083	1.0004	-224.56	2.3513
09:36:00	148.93	2020.59	10.0167	1.0007	-224.97	2.3521
09:36:30	148.93	2024.04	10.0250	1.0011	-221.52	2.3454
09:37:00	148.93	2025.61	10.0333	1.0014	-219.95	2.3423
09:37:30	148.93	2027.64	10.0417	1.0018	-217.92	2.3383
09:38:00	148.93	2026.73	10.0500	1.0022	-218.83	2.3401
09:38:30	148.93	2026.52	10.0583	1.0025	-219.04	2.3405
09:39:00	148.93	2030.40	10.0667	1.0029	-215.16	2.3328
09:39:30	148.93	2031.41	10.0750	1.0032	-214.15	2.3307
09:40:00	148.93	2034.01	10.0833	1.0036	-211.55	2.3254
09:40:30	148.93	2031.89	10.0917	1.0040	-213.67	2.3297
09:41:00	148.93	2028.06	10.1000	1.0043	-217.50	2.3375
09:41:30	148.93	2020.38	10.1083	1.0047	-225.18	2.3525
09:42:00	148.93	2018.59	10.1167	1.0050	-226.97	2.3560
09:42:30	148.93	2021.02	10.1250	1.0054	-224.54	2.3513
09:43:00	149.08	2021.02	10.1333	1.0058	-224.54	2.3513
09:43:30	149.08	2023.95	10.1417	1.0061	-221.61	2.3456
09:44:00	148.93	2025.09	10.1500	1.0065	-220.47	2.3433
09:44:30	148.93	2025.45	10.1583	1.0068	-220.11	2.3426
09:45:00	148.93	2025.30	10.1667	1.0072	-220.26	2.3429
09:45:30	148.93	2026.56	10.1750	1.0075	-219.00	2.3405
09:46:00	148.93	2030.56	10.1833	1.0079	-215.00	2.3324
09:47:00	148.93	2030.28	10.2000	1.0086	-215.28	2.3330
09:47:30	149.08	2021.28	10.2083	1.0090	-224.28	2.3508
09:48:00	148.93	2020.97	10.2167	1.0093	-224.59	2.3514
09:48:30	148.93	2024.30	10.2250	1.0097	-221.26	2.3449
09:49:30	148.93	2026.57	10.2417	1.0104	-218.99	2.3404
09:50:00	148.93	2025.69	10.2500	1.0107	-219.87	2.3422
09:50:30	148.93	2023.95	10.2583	1.0111	-221.61	2.3456
09:51:00	149.08	2023.97	10.2667	1.0114	-221.59	2.3456
09:51:30	149.08	2025.42	10.2750	1.0118	-220.14	2.3427
09:52:00	148.93	2026.02	10.2833	1.0121	-219.54	2.3415
09:52:30	148.93	2027.59	10.2917	1.0125	-217.97	2.3384
09:53:30	148.93	2024.83	10.3083	1.0132	-220.73	2.3439
09:54:00	149.08	2027.26	10.3167	1.0135	-218.30	2.3390
09:54:30	148.93	2031.08	10.3250	1.0139	-214.48	2.3314
09:55:00	148.93	2032.04	10.3333	1.0142	-213.52	2.3294
09:55:30	148.93	2030.06	10.3417	1.0146	-215.50	2.3334
09:56:00	149.08	2027.54	10.3500	1.0149	-218.02	2.3385
09:56:30	149.08	2019.60	10.3583	1.0153	-225.96	2.3540
09:57:00	148.93	2019.64	10.3667	1.0156	-225.92	2.3540
09:57:30	148.93	2021.17	10.3750	1.0160	-224.39	2.3510
09:58:00	148.93	2021.71	10.3833	1.0163	-223.85	2.3500
09:58:30	149.08	2023.69	10.3917	1.0167	-221.87	2.3461
09:59:00	148.93	2024.40	10.4000	1.0170	-221.16	2.3447

16-OCT-84	SDT degF	SDP psia	t-t0 HR	L(t-t0)	P-P0 psia	L(P-P0)
10:00:00	149.08	2022.29	10.4167	1.0177	-223.27	2.3488
10:00:30	148.93	2021.95	10.4250	1.0181	-223.61	2.3495
10:01:00	148.93	2025.45	10.4333	1.0184	-220.11	2.3426
10:01:30	149.08	2027.85	10.4417	1.0188	-217.71	2.3379
10:02:00	148.93	2028.61	10.4500	1.0191	-216.95	2.3364
10:02:30	148.93	2020.74	10.4583	1.0195	-224.82	2.3518
10:03:00	148.93	2016.19	10.4667	1.0198	-229.37	2.3605
10:03:30	148.93	2019.64	10.4750	1.0202	-225.92	2.3540
10:04:00	148.93	2020.04	10.4833	1.0205	-225.52	2.3532
10:05:00	149.08	2019.60	10.5000	1.0212	-225.96	2.3540
10:05:30	149.08	2020.26	10.5083	1.0215	-225.30	2.3528
10:06:00	148.93	2020.16	10.5167	1.0219	-225.40	2.3530
10:06:30	148.93	2018.71	10.5250	1.0222	-226.85	2.3557
10:07:00	149.08	2017.81	10.5333	1.0226	-227.75	2.3575
10:07:30	149.08	2018.24	10.5417	1.0229	-227.32	2.3566
10:08:00	148.93	2017.88	10.5500	1.0233	-227.68	2.3573
10:08:30	148.93	2018.93	10.5583	1.0236	-226.63	2.3553
10:09:00	148.93	2020.83	10.5667	1.0239	-224.73	2.3517
10:09:30	149.08	2021.12	10.5750	1.0243	-224.44	2.3511
10:10:30	149.08	2019.67	10.5917	1.0250	-225.89	2.3539
10:11:30	149.08	2021.45	10.6083	1.0256	-224.11	2.3505
10:12:00	148.93	2022.71	10.6167	1.0260	-222.85	2.3480
10:13:00	148.93	2021.88	10.6333	1.0267	-223.68	2.3496
10:15:00	148.93	2023.19	10.6667	1.0280	-222.37	2.3471
10:16:00	149.08	2021.71	10.6833	1.0287	-223.85	2.3500
10:18:00	149.08	2023.71	10.7167	1.0301	-221.85	2.3461
10:18:30	148.93	2023.38	10.7250	1.0304	-222.18	2.3467
10:19:00	149.08	2022.57	10.7333	1.0307	-222.99	2.3483
10:19:30	148.93	2023.02	10.7417	1.0311	-222.54	2.3474
10:20:30	149.08	2025.00	10.7583	1.0317	-220.56	2.3435
10:21:00	148.93	2025.12	10.7667	1.0321	-220.44	2.3433
10:21:30	149.08	2024.47	10.7750	1.0324	-221.09	2.3446
10:22:00	149.08	2021.91	10.7833	1.0328	-223.65	2.3496
10:22:30	148.93	2020.97	10.7917	1.0331	-224.59	2.3514
10:23:00	149.08	2022.99	10.8000	1.0334	-222.57	2.3475
10:24:00	149.08	2025.83	10.8167	1.0341	-219.73	2.3419
10:24:30	148.93	2025.61	10.8250	1.0344	-219.95	2.3423
10:25:30	149.08	2021.60	10.8417	1.0351	-223.96	2.3502
10:26:00	148.93	2021.14	10.8500	1.0354	-224.42	2.3511
10:27:00	149.08	2023.02	10.8667	1.0361	-222.54	2.3474
10:28:00	149.08	2023.11	10.8833	1.0368	-222.45	2.3472
10:29:00	148.93	2023.90	10.9000	1.0374	-221.66	2.3457
10:30:00	149.08	2022.62	10.9167	1.0381	-222.94	2.3482
10:31:00	CHANGE TO 88/64" ADJ. CHOKE.					
10:31:00	149.08	2022.43	10.9333	1.0388	-223.13	2.3486
10:32:00	149.08	2020.38	10.9500	1.0394	-225.18	2.3525
10:33:00	149.08	2019.40	10.9667	1.0401	-226.16	2.3544
10:33:30	148.93	2019.22	10.9750	1.0404	-226.34	2.3548
10:34:00	149.08	2018.57	10.9833	1.0407	-226.99	2.3560
10:35:00	149.08	2015.50	11.0000	1.0414	-230.06	2.3618
10:35:30	149.08	2015.98	11.0083	1.0417	-229.58	2.3609
10:36:00	149.08	2017.62	11.0167	1.0421	-227.94	2.3578
10:36:30	149.08	2017.55	11.0250	1.0424	-228.01	2.3580
10:37:00	149.08	2016.62	11.0333	1.0427	-228.94	2.3597
10:37:30	148.93	2016.36	11.0417	1.0430	-229.20	2.3602
10:38:00	CHANGE TO 100/64" ADJ. CHOKE.					
10:38:00	148.93	2016.84	11.0500	1.0434	-228.72	2.3593
10:39:00	149.08	2015.34	11.0667	1.0440	-230.22	2.3621
10:40:00	149.08	2014.88	11.0833	1.0447	-230.68	2.3630
10:40:30	149.08	2016.08	11.0917	1.0450	-229.48	2.3607
10:41:00	149.08	2019.03	11.1000	1.0453	-226.53	2.3551
10:42:00	148.93	2019.17	11.1167	1.0460	-226.39	2.3549

16-OCT-84	SDT degF	SDP psia	t-t0 HR	L(t-t0)	P-P0 psia	L(P-P0)
10:42:30	149.00	2020.02	11.1250	1.0463	-225.54	2.3532
10:43:00	149.00	2019.86	11.1333	1.0466	-225.70	2.3535
10:43:30	149.00	2019.28	11.1417	1.0470	-226.28	2.3547
10:44:00	148.93	2018.19	11.1500	1.0473	-227.37	2.3567
10:44:30	148.93	2016.57	11.1583	1.0476	-228.99	2.3598
10:45:00	148.93	2016.07	11.1667	1.0479	-229.49	2.3608
10:45:30	148.93	2016.71	11.1750	1.0482	-228.85	2.3596
10:46:30	149.00	2015.93	11.1917	1.0489	-229.63	2.3610
10:47:30	148.93	2015.67	11.2083	1.0495	-229.89	2.3615
10:48:00	148.93	2017.14	11.2167	1.0499	-228.42	2.3587
10:49:00	149.00	2017.38	11.2333	1.0505	-228.18	2.3583
10:50:00	149.00	2015.57	11.2500	1.0512	-229.99	2.3617
10:50:30	149.00	2014.77	11.2583	1.0515	-230.79	2.3632
10:51:00	CHOKING AT SANDTRAP.					
10:51:30	148.93	2014.53	11.2750	1.0521	-231.03	2.3637
10:52:00	149.00	2015.60	11.2833	1.0524	-229.96	2.3617
10:53:00	149.00	2015.74	11.3000	1.0531	-229.82	2.3614
10:54:00	148.93	2017.05	11.3167	1.0537	-228.51	2.3589
10:54:30	149.00	2015.67	11.3250	1.0540	-229.89	2.3615
10:55:00	BY-PASS SANDTRAP, CHANGE TO 96/64" ADJ. CHOKE.					
10:55:00	149.00	1981.23	11.3333	1.0544	-264.33	2.4221
10:55:30	149.00	1965.79	11.3417	1.0547	-279.77	2.4468
10:56:00	149.00	1956.17	11.3500	1.0550	-289.39	2.4615
10:56:30	149.00	1949.51	11.3583	1.0553	-296.05	2.4714
10:57:00	149.00	1944.37	11.3667	1.0556	-301.19	2.4788
10:57:30	149.00	1944.23	11.3750	1.0560	-301.33	2.4790
10:58:00	CHANGE TO 84/64" ADJ. CHOKE					
10:58:00	148.93	1947.56	11.3833	1.0563	-298.00	2.4742
10:58:30	149.00	1949.94	11.3917	1.0566	-295.62	2.4707
10:59:00	148.93	1949.80	11.4000	1.0569	-295.76	2.4709
10:59:30	148.93	1948.98	11.4083	1.0572	-296.58	2.4721
11:01:30	149.00	1953.01	11.4417	1.0585	-292.55	2.4662
11:02:00	CHANGE TO 68/64" ADJ. CHOKE.					
11:02:00	148.93	1956.14	11.4500	1.0588	-289.42	2.4615
11:02:30	149.00	1960.15	11.4583	1.0591	-285.41	2.4555
11:03:30	149.00	1965.28	11.4750	1.0598	-280.28	2.4476
11:04:00	149.00	1966.67	11.4833	1.0601	-278.89	2.4454
11:05:00	149.00	1971.81	11.5000	1.0607	-273.75	2.4373
11:06:00	149.00	1975.40	11.5167	1.0613	-270.16	2.4316
11:06:30	149.00	1978.70	11.5250	1.0616	-266.86	2.4263
11:07:30	149.00	1989.46	11.5417	1.0623	-256.10	2.4084
11:08:00	149.00	1994.15	11.5500	1.0626	-251.41	2.4004
11:08:30	149.00	1997.05	11.5583	1.0629	-248.51	2.3953
11:09:30	149.22	2001.76	11.5750	1.0635	-243.80	2.3870
11:10:30	149.22	2005.26	11.5917	1.0641	-240.30	2.3807
11:11:00	149.00	2005.87	11.6000	1.0645	-239.69	2.3797
11:11:30	149.22	2008.11	11.6083	1.0648	-237.45	2.3756
11:12:00	149.22	2011.30	11.6167	1.0651	-234.26	2.3697
11:13:00	149.22	2013.53	11.6333	1.0657	-232.03	2.3655
11:14:00	149.22	2016.31	11.6500	1.0663	-229.25	2.3603
11:16:00	149.00	2020.69	11.6833	1.0676	-224.87	2.3519
11:17:00	149.00	2022.09	11.7000	1.0682	-223.47	2.3492
11:17:30	149.22	2022.90	11.7083	1.0685	-222.66	2.3476
11:18:00	149.22	2023.23	11.7167	1.0688	-222.33	2.3470
11:19:00	149.00	2025.80	11.7333	1.0694	-219.76	2.3420
11:19:30	149.00	2026.18	11.7417	1.0697	-219.38	2.3412
11:20:00	149.22	2028.21	11.7500	1.0700	-217.35	2.3372
11:20:30	149.22	2028.73	11.7583	1.0703	-216.83	2.3361
11:21:00	149.22	2030.59	11.7667	1.0707	-214.97	2.3324
11:22:00	149.22	2032.41	11.7833	1.0713	-213.16	2.3287
11:23:00	149.22	2034.73	11.8000	1.0719	-210.83	2.3239
11:23:30	149.00	2035.55	11.8083	1.0722	-210.01	2.3222

16-OCT-84	SDT degF	SDF psia	t-t0 HR	L(t-t0)	P-P0 psia	L(P-P0)
11:24:00	149.08	2037.88	11.8167	1.0725	-207.68	2.3174
11:25:00	149.08	2040.38	11.8333	1.0731	-205.18	2.3121
11:25:30	149.22	2041.88	11.8417	1.0734	-203.68	2.3090
11:26:30	149.08	2044.17	11.8583	1.0740	-201.39	2.3040
11:27:00	149.22	2045.71	11.8667	1.0743	-199.85	2.3007
11:27:30	149.22	2046.05	11.8750	1.0746	-199.51	2.3000
11:28:00	149.22	2047.12	11.8833	1.0749	-198.44	2.2976
11:28:30	149.22	2046.40	11.8917	1.0752	-199.16	2.2992
11:29:00	149.08	2050.16	11.9000	1.0755	-195.40	2.2909
11:29:30	149.22	2051.21	11.9083	1.0759	-194.35	2.2886
11:30:00	CHANGE TO 36/64" FIXED CHOKE.					
11:30:00	149.22	2065.02	11.9167	1.0762	-180.54	2.2566
11:30:30	149.22	2089.82	11.9250	1.0765	-155.74	2.1924
11:31:00	149.08	2108.12	11.9333	1.0768	-137.44	2.1381
11:31:30	149.22	2120.56	11.9417	1.0771	-125.00	2.0969
11:32:00	149.22	2129.00	11.9500	1.0774	-116.56	2.0665
11:32:30	149.08	2134.79	11.9583	1.0777	-110.77	2.0444
11:33:00	149.22	2139.57	11.9667	1.0780	-105.99	2.0253
11:33:30	149.22	2143.21	11.9750	1.0783	-102.35	2.0101
11:34:00	149.22	2145.96	11.9833	1.0786	-99.60	1.9983
11:34:30	149.22	2148.13	11.9917	1.0789	-97.43	1.9887
11:35:30	149.22	2151.03	12.0083	1.0795	-94.53	1.9756
11:37:30	149.22	2155.21	12.0417	1.0807	-90.35	1.9559
11:39:30	149.08	2157.30	12.0750	1.0819	-88.26	1.9458
11:43:30	149.08	2159.29	12.1417	1.0843	-86.27	1.9359
11:45:30	149.08	2160.61	12.1750	1.0855	-84.95	1.9291
11:47:30	149.08	2161.43	12.2083	1.0867	-84.13	1.9250
11:49:30	148.93	2161.60	12.2417	1.0878	-83.96	1.9241
11:50:30	148.93	2161.72	12.2583	1.0884	-83.84	1.9235
11:54:30	148.93	2164.03	12.3250	1.0908	-81.53	1.9113
11:58:30	148.93	2165.36	12.3917	1.0931	-80.20	1.9042
12:00:30	148.93	2165.43	12.4250	1.0943	-80.13	1.9038
12:01:30	148.78	2165.88	12.4417	1.0949	-79.68	1.9013
12:03:30	148.93	2166.19	12.4750	1.0960	-79.37	1.8996
12:05:00	CHANGE TO 24/64" ADJ. CHOKE.					
12:05:30	148.93	2165.85	12.5083	1.0972	-79.71	1.9015
12:06:30	148.93	2165.97	12.5250	1.0978	-79.59	1.9009
12:07:00	148.93	2179.14	12.5333	1.0981	-66.42	1.8223
12:07:30	148.93	2202.85	12.5417	1.0984	-42.71	1.6305
12:08:00	148.93	2213.23	12.5500	1.0986	-32.33	1.5096
12:08:30	148.93	2219.26	12.5583	1.0989	-26.30	1.4200
12:09:00	148.93	2222.45	12.5667	1.0992	-23.11	1.3638
12:10:00	148.93	2223.18	12.5833	1.0998	-22.38	1.3499
12:10:30	148.93	2223.30	12.5917	1.1001	-22.26	1.3476
12:12:30	148.93	2227.65	12.6250	1.1012	-17.91	1.2531
12:13:00	148.93	2228.60	12.6333	1.1015	-16.96	1.2295
12:14:00	148.93	2229.62	12.6500	1.1021	-15.94	1.2026
12:14:30	148.93	2230.15	12.6583	1.1024	-15.41	1.1877
12:15:00	CHANGE TO 32/64" ADJ. CHOKE.					
12:15:00	148.93	2230.17	12.6667	1.1027	-15.39	1.1872
12:15:30	148.93	2227.27	12.6750	1.1029	-18.29	1.2622
12:16:00	148.93	2202.00	12.6833	1.1032	-43.56	1.6391
12:16:30	148.93	2192.28	12.6917	1.1035	-53.28	1.7266
12:17:30	148.93	2186.51	12.7083	1.1041	-59.05	1.7712
12:18:00	148.93	2183.77	12.7167	1.1044	-61.79	1.7909
12:19:00	148.93	2180.25	12.7333	1.1049	-65.31	1.8150
12:19:30	148.93	2180.90	12.7417	1.1052	-64.66	1.8106
12:20:00	CHANGE TO 36/64" ADJ. CHOKE.					
12:20:00	148.93	2175.88	12.7500	1.1055	-69.68	1.8431
12:20:30	148.93	2172.94	12.7583	1.1058	-72.62	1.8610
12:21:00	148.78	2171.04	12.7667	1.1061	-74.52	1.8723
12:21:30	148.93	2168.42	12.7750	1.1064	-77.14	1.8873

16-OCT-84	SDT degF	SDP psia	t-t0 HR	L(t-t0)	P-P0 psia	L(P-P0)
12:22:30	148.78	2166.07	12.7917	1.1069	-79.49	1.9003
12:23:00	148.93	2165.35	12.8000	1.1072	-80.21	1.9043
12:23:30	148.93	2163.91	12.8083	1.1075	-81.65	1.9119
12:24:30	148.78	2163.48	12.8250	1.1081	-82.08	1.9142
12:25:00	CHANGE TO 36/64" FIXED CHOKE.					
12:25:00	148.93	2163.79	12.8333	1.1083	-81.77	1.9126
12:25:30	148.93	2165.60	12.8417	1.1086	-79.96	1.9028
12:27:30	148.78	2168.51	12.8750	1.1097	-77.05	1.8868
12:28:30	148.93	2168.30	12.8917	1.1103	-77.26	1.8880
12:29:00	148.93	2168.61	12.9000	1.1106	-76.95	1.8862
12:29:30	148.93	2168.26	12.9083	1.1109	-77.30	1.8882
12:30:00	CHANGE TO 28/64" ADJ. CHOKE.					
12:30:00	148.93	2172.29	12.9167	1.1112	-73.27	1.8649
12:30:30	148.93	2179.90	12.9250	1.1114	-65.66	1.8173
12:31:00	148.93	2183.99	12.9333	1.1117	-61.57	1.7893
12:31:30	148.93	2184.36	12.9417	1.1120	-61.20	1.7868
12:32:00	148.93	2185.32	12.9500	1.1123	-60.24	1.7799
12:33:00	149.08	2183.67	12.9667	1.1128	-61.89	1.7917
12:33:30	148.93	2182.85	12.9750	1.1131	-62.71	1.7973
12:34:00	149.08	2183.60	12.9833	1.1134	-61.96	1.7921
12:34:30	148.93	2185.03	12.9917	1.1137	-60.53	1.7820
12:35:00	CHANGE TO 28/64" FIXED CHOKE, SAND FOUND IN 36/64" FIXED.					
12:35:00	148.93	2185.37	13.0000	1.1139	-60.19	1.7795
12:35:30	149.08	2190.36	13.0083	1.1142	-55.20	1.7419
12:36:00	148.93	2194.70	13.0167	1.1145	-50.86	1.7064
12:37:00	148.93	2198.41	13.0333	1.1151	-47.15	1.6735
12:37:30	148.93	2198.76	13.0417	1.1153	-46.80	1.6703
12:38:00	148.93	2199.60	13.0500	1.1156	-45.96	1.6624
12:38:30	148.93	2201.33	13.0583	1.1159	-44.23	1.6457
12:39:00	148.93	2201.26	13.0667	1.1162	-44.30	1.6464
12:40:00	149.08	2198.81	13.0833	1.1167	-46.75	1.6698
12:40:30	149.08	2200.80	13.0917	1.1170	-44.76	1.6509
12:41:30	148.93	2201.83	13.1083	1.1175	-43.73	1.6408
12:42:00	149.08	2202.61	13.1167	1.1178	-42.95	1.6330
12:44:00	148.93	2203.52	13.1500	1.1189	-42.04	1.6236
12:45:00	148.93	2203.56	13.1667	1.1195	-42.00	1.6233
12:45:30	148.93	2203.92	13.1750	1.1198	-41.64	1.6195
12:46:00	148.93	2203.59	13.1833	1.1200	-41.97	1.6229
12:47:00	148.93	2204.23	13.2000	1.1206	-41.33	1.6163
12:47:30	148.93	2204.35	13.2083	1.1208	-41.21	1.6150
12:48:00	148.93	2204.04	13.2167	1.1211	-41.52	1.6182
12:48:30	148.93	2204.25	13.2250	1.1214	-41.31	1.6161
12:49:00	148.78	2203.96	13.2333	1.1217	-41.60	1.6191
12:51:00	148.93	2204.80	13.2667	1.1228	-40.76	1.6102
12:55:00	148.78	2204.87	13.3333	1.1249	-40.69	1.6095
12:59:00	148.78	2205.68	13.4000	1.1271	-39.88	1.6007
13:00:00	148.78	2206.11	13.4167	1.1276	-39.45	1.5960
13:02:00	148.78	2205.80	13.4500	1.1287	-39.76	1.5994
13:04:00	148.78	2206.06	13.4833	1.1298	-39.50	1.5966
13:05:00	148.78	2206.56	13.5000	1.1303	-39.00	1.5910
13:07:00	148.93	2206.72	13.5333	1.1314	-38.84	1.5893
13:08:00	148.78	2206.65	13.5500	1.1319	-38.91	1.5901
13:08:30	148.93	2206.82	13.5583	1.1322	-38.74	1.5881
13:09:00	148.78	2206.30	13.5667	1.1325	-39.26	1.5939
13:13:00	148.93	2207.15	13.6333	1.1346	-38.41	1.5845
13:15:00	148.93	2207.10	13.6667	1.1357	-38.46	1.5850
13:16:00	148.78	2206.68	13.6833	1.1362	-38.88	1.5897
13:20:00	148.78	2207.29	13.7500	1.1383	-38.27	1.5829
13:28:00	148.63	2207.27	13.8833	1.1425	-38.29	1.5831
13:29:00	148.78	2207.34	13.9000	1.1430	-38.22	1.5823
13:29:30	148.63	2206.96	13.9083	1.1433	-38.60	1.5866
13:30:30	148.78	2207.51	13.9250	1.1438	-38.05	1.5803

16-OCT-84	SDT degF	SDP psia	t-t0 HR	L(t-t0)	P-P0 psia	L(P-P0)
13:32:30	148.78	2207.48	13.9583	1.1448	-38.08	1.5807
13:33:30	148.78	2207.63	13.9750	1.1454	-37.93	1.5790
13:37:30	148.78	2207.51	14.0417	1.1474	-38.05	1.5803
13:38:30	148.78	2207.22	14.0583	1.1479	-38.34	1.5837
13:39:30	148.78	2207.53	14.0750	1.1484	-38.03	1.5801
13:40:30	148.78	2207.31	14.0917	1.1490	-38.25	1.5827
13:42:30	148.78	2207.48	14.1250	1.1500	-38.08	1.5807
13:43:30	148.78	2207.81	14.1417	1.1505	-37.75	1.5770
13:44:30	148.78	2207.53	14.1583	1.1510	-38.03	1.5801
13:45:30	148.78	2207.84	14.1750	1.1515	-37.72	1.5766
13:53:30	148.78	2207.74	14.3083	1.1556	-37.82	1.5778
13:55:30	148.78	2208.06	14.3417	1.1566	-37.50	1.5740
13:56:30	148.63	2207.62	14.3583	1.1571	-37.94	1.5791
13:58:30	148.78	2208.06	14.3917	1.1581	-37.50	1.5740
14:02:30	148.78	2207.88	14.4583	1.1601	-37.69	1.5762
14:04:30	148.78	2208.01	14.4917	1.1611	-37.55	1.5746
14:05:00	148.78	2208.32	14.5000	1.1614	-37.24	1.5710
14:07:00	148.93	2207.88	14.5333	1.1624	-37.69	1.5762
14:11:00	148.63	2208.03	14.6000	1.1644	-37.53	1.5744
14:13:00	148.78	2208.03	14.6333	1.1653	-37.53	1.5744
14:14:00	148.78	2207.62	14.6500	1.1658	-37.94	1.5791
14:15:00	148.78	2207.94	14.6667	1.1663	-37.62	1.5754
14:15:30	148.78	2207.74	14.6750	1.1666	-37.82	1.5778
14:16:30	148.78	2208.06	14.6917	1.1671	-37.50	1.5740
14:24:30	148.78	2207.89	14.8250	1.1710	-37.67	1.5760
14:26:30	148.78	2207.65	14.8583	1.1720	-37.91	1.5788
14:30:30	148.78	2207.96	14.9250	1.1739	-37.60	1.5752
14:31:30	148.78	2207.79	14.9417	1.1744	-37.77	1.5772
14:32:00	148.78	2207.96	14.9500	1.1746	-37.60	1.5752
14:33:00	148.78	2207.41	14.9667	1.1751	-38.15	1.5815
14:33:30	148.78	2207.72	14.9750	1.1754	-37.84	1.5780
14:35:30	148.78	2207.89	15.0083	1.1763	-37.67	1.5760
14:36:00	148.93	2207.67	15.0167	1.1766	-37.89	1.5786
14:37:00	148.78	2207.96	15.0333	1.1771	-37.60	1.5752
14:39:00	148.78	2208.01	15.0667	1.1780	-37.55	1.5746
14:40:00	148.63	2207.43	15.0833	1.1785	-38.13	1.5813
14:44:00	148.63	2207.65	15.1500	1.1804	-37.91	1.5787
14:46:00	148.78	2207.37	15.1833	1.1814	-38.19	1.5819
14:47:00	148.63	2207.08	15.2000	1.1818	-38.48	1.5852
14:48:00	148.78	2207.48	15.2167	1.1823	-38.08	1.5807
14:52:00	148.78	2207.69	15.2833	1.1842	-37.87	1.5783
14:54:00	148.78	2207.77	15.3167	1.1852	-37.79	1.5774
14:55:00	148.78	2207.46	15.3333	1.1856	-38.10	1.5809
14:59:00	148.63	2207.62	15.4000	1.1875	-37.94	1.5791
15:01:00	148.63	2208.07	15.4333	1.1885	-37.49	1.5740
15:01:30	148.78	2207.77	15.4417	1.1887	-37.79	1.5774
15:03:30	148.78	2207.79	15.4750	1.1896	-37.77	1.5772
15:04:30	148.78	2207.51	15.4917	1.1901	-38.05	1.5803
15:08:30	148.78	2208.00	15.5583	1.1920	-37.56	1.5748
15:10:30	148.78	2208.29	15.5917	1.1929	-37.27	1.5714
15:11:30	148.78	2207.79	15.6083	1.1934	-37.77	1.5772
15:15:30	148.78	2208.27	15.6750	1.1952	-37.29	1.5716
15:16:30	148.78	2207.88	15.6917	1.1957	-37.69	1.5762
15:17:30	148.63	2208.13	15.7083	1.1961	-37.43	1.5732
15:25:30	148.78	2208.01	15.8417	1.1998	-37.55	1.5746
15:26:30	148.78	2207.79	15.8583	1.2003	-37.77	1.5772
15:27:30	148.78	2208.24	15.8750	1.2007	-37.32	1.5720
15:28:00	148.78	2208.34	15.8833	1.2009	-37.22	1.5708
15:28:30	148.63	2207.86	15.8917	1.2012	-37.70	1.5764
15:32:30	148.78	2208.00	15.9583	1.2030	-37.56	1.5748
15:34:30	148.78	2208.06	15.9917	1.2039	-37.50	1.5740
15:35:30	148.78	2208.10	16.0083	1.2043	-37.46	1.5736

16-OCT-84	SDT degF	SDP psia	t-t0 HR	L(t-t0)	P-P0 psia	L(P-P0)
15:36:00	148.78	2207.93	16.0167	1.2046	-37.63	1.5756
15:38:00	148.63	2208.20	16.0500	1.2055	-37.36	1.5724
15:40:00	148.78	2208.03	16.0833	1.2064	-37.53	1.5744
15:41:00	148.78	2207.77	16.1000	1.2068	-37.79	1.5774
15:45:00	148.78	2208.24	16.1667	1.2086	-37.32	1.5720
15:46:00	148.78	2207.91	16.1833	1.2091	-37.65	1.5758
15:47:00	148.78	2208.17	16.2000	1.2095	-37.39	1.5728
15:48:00	148.78	2207.77	16.2167	1.2100	-37.79	1.5774
15:48:30	148.78	2207.55	16.2250	1.2102	-38.01	1.5799
15:56:30	148.63	2207.65	16.3583	1.2137	-37.91	1.5787
15:57:00	148.78	2207.81	16.3667	1.2140	-37.75	1.5770
15:58:00	148.78	2207.50	16.3833	1.2144	-38.06	1.5805
16:00:00	148.78	2208.01	16.4167	1.2153	-37.55	1.5746
16:02:00	148.78	2207.70	16.4500	1.2162	-37.86	1.5782
16:03:00	148.78	2207.34	16.4667	1.2166	-38.22	1.5823
16:07:00	148.78	2207.69	16.5333	1.2184	-37.87	1.5783
16:09:00	148.78	2207.53	16.5667	1.2192	-38.03	1.5801
16:10:00	148.78	2207.46	16.5833	1.2197	-38.10	1.5809
16:10:30	148.78	2207.24	16.5917	1.2199	-38.32	1.5835
16:11:00	148.78	2207.55	16.6000	1.2201	-38.01	1.5799
16:13:00	148.78	2207.60	16.6333	1.2210	-37.96	1.5793
16:14:00	148.78	2207.65	16.6500	1.2214	-37.91	1.5788
16:14:30	148.78	2207.89	16.6583	1.2216	-37.67	1.5760
16:15:00	CHANGE TO 36/64" ADJ. CHOKE.					
16:15:00	148.78	2207.62	16.6667	1.2218	-37.94	1.5791
16:15:30	148.78	2192.73	16.6750	1.2221	-52.83	1.7229
16:16:00	148.78	2186.08	16.6833	1.2223	-59.48	1.7743
16:16:30	148.78	2183.23	16.6917	1.2225	-62.33	1.7947
16:17:30	148.78	2178.80	16.7083	1.2229	-66.76	1.8245
16:18:00	148.78	2177.81	16.7167	1.2231	-67.75	1.8309
16:18:30	148.78	2177.45	16.7250	1.2234	-68.11	1.8332
16:19:30	148.78	2175.50	16.7417	1.2238	-70.06	1.8455
16:20:00	148.78	2176.45	16.7500	1.2240	-69.11	1.8396
16:20:30	148.78	2175.58	16.7583	1.2242	-69.98	1.8449
16:21:00	148.63	2173.81	16.7667	1.2244	-71.75	1.8558
16:21:30	148.78	2173.75	16.7750	1.2247	-71.81	1.8562
16:22:00	148.93	2174.15	16.7833	1.2249	-71.41	1.8538
16:24:00	148.78	2173.13	16.8167	1.2257	-72.43	1.8599
16:24:30	148.78	2173.01	16.8250	1.2260	-72.55	1.8606
16:25:00	CHANGE TO 36/64" FIXED CHOKE.					
16:25:00	148.78	2168.92	16.8333	1.2262	-76.64	1.8845
16:25:30	148.78	2170.39	16.8417	1.2264	-75.17	1.8761
16:26:30	148.78	2169.61	16.8583	1.2268	-75.95	1.8805
16:28:30	148.78	2169.94	16.8917	1.2277	-75.62	1.8786
16:29:30	148.93	2169.49	16.9083	1.2281	-76.07	1.8812
16:30:30	148.78	2169.51	16.9250	1.2285	-76.05	1.8811
16:31:30	148.93	2168.95	16.9417	1.2290	-76.61	1.8843
16:32:00	148.93	2168.57	16.9500	1.2292	-76.99	1.8864
16:32:30	148.93	2166.99	16.9583	1.2294	-78.57	1.8953
16:33:00	148.93	2166.40	16.9667	1.2296	-79.16	1.8985
16:33:30	148.93	2167.97	16.9750	1.2298	-77.59	1.8898
16:35:30	148.93	2171.01	17.0083	1.2307	-74.55	1.8725
16:36:30	148.93	2171.32	17.0250	1.2311	-74.24	1.8706
16:37:30	148.93	2172.48	17.0417	1.2315	-73.08	1.8638
16:38:30	148.93	2173.08	17.0583	1.2319	-72.48	1.8602
16:39:30	148.93	2173.12	17.0750	1.2324	-72.44	1.8600
16:40:30	148.93	2172.62	17.0917	1.2328	-72.94	1.8630
16:41:00	148.78	2171.86	17.1000	1.2330	-73.70	1.8675
16:41:30	148.93	2173.22	17.1083	1.2332	-72.34	1.8594
16:42:00	148.93	2173.67	17.1167	1.2334	-71.89	1.8567
16:43:00	148.93	2173.05	17.1333	1.2338	-72.51	1.8604
16:44:00	148.93	2173.55	17.1500	1.2343	-72.01	1.8574

16-OCT-84	SDT degF	SDP psia	t-t0 HR	L(t-t0)	P-P0 psia	L(P-P0)
16:45:00	148.93	2173.24	17.1667	1.2347	-72.32	1.8593
16:45:30	148.93	2173.82	17.1750	1.2349	-71.74	1.8557
16:46:00	148.93	2172.91	17.1833	1.2351	-72.65	1.8612
16:47:00	148.93	2173.03	17.2000	1.2355	-72.53	1.8605
16:47:30	148.93	2172.63	17.2083	1.2357	-72.93	1.8629
16:48:30	148.93	2173.63	17.2250	1.2362	-71.93	1.8569
16:49:00	148.93	2173.82	17.2333	1.2364	-71.74	1.8557
16:50:00	148.93	2173.17	17.2500	1.2368	-72.39	1.8597
16:50:30	148.93	2173.12	17.2583	1.2370	-72.44	1.8600
16:51:00	148.93	2173.69	17.2667	1.2372	-71.87	1.8566
16:51:30	148.93	2172.89	17.2750	1.2374	-72.67	1.8613
16:52:30	148.93	2174.65	17.2917	1.2378	-70.91	1.8507
16:53:30	149.08	2172.56	17.3083	1.2383	-73.00	1.8633
16:54:00	148.93	2172.17	17.3167	1.2385	-73.39	1.8657
16:55:00	148.93	2173.34	17.3333	1.2389	-72.22	1.8587
16:56:00	148.93	2173.56	17.3500	1.2393	-72.00	1.8573
16:56:30	148.93	2173.18	17.3583	1.2395	-72.38	1.8596
16:58:30	148.93	2174.10	17.3917	1.2403	-71.46	1.8541
16:59:30	148.93	2173.89	17.4083	1.2408	-71.67	1.8553
17:01:30	148.93	2172.87	17.4417	1.2416	-72.69	1.8615
17:02:00	148.93	2172.46	17.4500	1.2418	-73.10	1.8639
17:02:30	148.93	2173.96	17.4583	1.2420	-71.60	1.8549
17:04:30	148.93	2173.48	17.4917	1.2428	-72.08	1.8578
17:05:00	149.08	2173.10	17.5000	1.2430	-72.46	1.8601
17:05:30	148.93	2173.13	17.5083	1.2432	-72.43	1.8599
17:06:00	148.93	2172.75	17.5167	1.2435	-72.81	1.8622
17:07:00	148.93	2173.36	17.5333	1.2439	-72.20	1.8586
17:08:00	148.93	2172.93	17.5500	1.2443	-72.63	1.8611
17:08:30	148.93	2172.72	17.5583	1.2445	-72.84	1.8624
17:09:00	148.93	2171.65	17.5667	1.2447	-73.91	1.8687
17:11:00	148.93	2173.08	17.6000	1.2455	-72.48	1.8602
17:11:30	148.93	2172.86	17.6083	1.2457	-72.70	1.8616
17:12:30	148.93	2173.01	17.6250	1.2461	-72.55	1.8606
17:13:00	148.93	2173.39	17.6333	1.2463	-72.17	1.8583
17:13:30	148.93	2172.48	17.6417	1.2465	-73.08	1.8638
17:14:30	149.08	2174.13	17.6583	1.2469	-71.43	1.8539
17:15:00	149.08	2172.72	17.6667	1.2472	-72.84	1.8624
17:15:30	148.93	2172.10	17.6750	1.2474	-73.46	1.8661
17:16:30	148.93	2171.98	17.6917	1.2478	-73.58	1.8668
17:17:00	148.93	2172.79	17.7000	1.2480	-72.77	1.8620
17:18:00	148.93	2173.29	17.7167	1.2484	-72.27	1.8590
17:20:00	148.93	2172.87	17.7500	1.2492	-72.69	1.8615
17:21:00	149.08	2172.80	17.7667	1.2496	-72.76	1.8619
17:21:30	149.08	2173.27	17.7750	1.2498	-72.29	1.8591
17:22:00	148.93	2173.15	17.7833	1.2500	-72.41	1.8598
17:22:30	148.93	2174.32	17.7917	1.2502	-71.24	1.8527
17:23:00	148.93	2172.29	17.8000	1.2504	-73.27	1.8649
17:23:30	148.93	2171.84	17.8083	1.2506	-73.72	1.8676
17:24:30	148.93	2173.01	17.8250	1.2510	-72.55	1.8606
17:25:00	149.08	2172.96	17.8333	1.2512	-72.60	1.8609
17:26:00	148.93	2173.56	17.8500	1.2516	-72.00	1.8573
17:27:00	149.08	2172.86	17.8667	1.2520	-72.70	1.8616
17:28:00	148.93	2173.18	17.8833	1.2524	-72.38	1.8596
17:28:30	148.93	2172.98	17.8917	1.2527	-72.58	1.8608
17:29:30	148.93	2173.41	17.9083	1.2531	-72.15	1.8582
17:30:30	148.93	2172.67	17.9250	1.2535	-72.89	1.8627
17:31:30	149.08	2172.67	17.9417	1.2539	-72.89	1.8627
17:32:30	148.93	2173.25	17.9583	1.2543	-72.31	1.8592
17:34:30	149.08	2172.84	17.9917	1.2551	-72.72	1.8617
17:35:30	148.93	2172.55	18.0083	1.2555	-73.01	1.8634
17:36:30	148.93	2172.89	18.0250	1.2559	-72.67	1.8613
17:37:00	148.93	2173.44	18.0333	1.2561	-72.12	1.8580

16-OCT-84	SDT degF	SDP psia	t-t0 HR	L(t-t0)	P-P0 psia	L(P-P0)
17:37:30	148.93	2173.05	18.0417	1.2563	-72.51	1.8604
17:38:00	148.93	2171.56	18.0500	1.2565	-74.00	1.8692
17:39:00	148.93	2171.92	18.0667	1.2569	-73.64	1.8671
17:39:30	148.93	2172.13	18.0750	1.2571	-73.43	1.8659
17:40:00	148.93	2173.08	18.0833	1.2573	-72.48	1.8602
17:41:00	148.93	2172.74	18.1000	1.2577	-72.82	1.8623
17:41:30	148.93	2172.91	18.1083	1.2579	-72.65	1.8612
17:42:00	148.93	2172.29	18.1167	1.2581	-73.27	1.8649
17:42:30	149.08	2172.48	18.1250	1.2583	-73.08	1.8638
17:43:00	149.08	2171.82	18.1333	1.2585	-73.74	1.8677
17:44:00	149.08	2173.29	18.1500	1.2589	-72.27	1.8590
17:44:30	148.93	2173.58	18.1583	1.2591	-71.98	1.8572
17:45:30	148.93	2172.18	18.1750	1.2595	-73.38	1.8656
17:46:00	148.93	2170.49	18.1833	1.2597	-75.07	1.8755
17:47:00	149.08	2171.89	18.2000	1.2601	-73.67	1.8673
17:47:30	148.93	2172.56	18.2083	1.2603	-73.00	1.8633
17:48:30	149.08	2173.10	18.2250	1.2607	-72.46	1.8601
17:50:30	148.93	2172.89	18.2583	1.2615	-72.67	1.8613
17:51:30	148.93	2173.31	18.2750	1.2619	-72.25	1.8589
17:52:00	148.93	2172.93	18.2833	1.2621	-72.63	1.8611
17:52:30	149.08	2173.15	18.2917	1.2623	-72.41	1.8598
17:53:30	149.08	2172.49	18.3083	1.2626	-73.07	1.8637
17:54:00	149.08	2172.93	18.3167	1.2628	-72.63	1.8611
17:56:00	149.08	2173.25	18.3500	1.2636	-72.31	1.8592
17:57:00	149.08	2172.65	18.3667	1.2640	-72.91	1.8628
17:58:00	148.93	2172.58	18.3833	1.2644	-72.98	1.8632
17:58:30	148.93	2172.04	18.3917	1.2646	-73.52	1.8664
17:59:00	148.93	2172.87	18.4000	1.2648	-72.69	1.8615
18:00:00	148.93	2172.82	18.4167	1.2652	-72.74	1.8618
18:00:30	149.08	2172.29	18.4250	1.2654	-73.27	1.8649
18:01:30	148.93	2172.29	18.4417	1.2658	-73.27	1.8649
18:02:00	148.93	2172.62	18.4500	1.2660	-72.94	1.8630
18:03:00	149.08	2172.27	18.4667	1.2664	-73.29	1.8650
18:03:30	148.93	2171.58	18.4750	1.2666	-73.98	1.8691
18:04:30	148.93	2171.51	18.4917	1.2670	-74.05	1.8695
18:05:30	148.93	2172.03	18.5083	1.2674	-73.53	1.8665
18:06:30	148.93	2171.60	18.5250	1.2678	-73.96	1.8690
18:07:30	148.93	2172.96	18.5417	1.2681	-72.60	1.8609
18:08:00	148.93	2172.55	18.5500	1.2683	-73.01	1.8634
18:08:30	148.93	2172.62	18.5583	1.2685	-72.94	1.8630
18:09:00	148.93	2171.03	18.5667	1.2687	-74.53	1.8724
18:09:30	148.93	2171.39	18.5750	1.2689	-74.17	1.8702
18:10:00	149.08	2170.84	18.5833	1.2691	-74.72	1.8735
18:12:00	149.08	2171.99	18.6167	1.2699	-73.57	1.8667
18:14:00	149.08	2171.58	18.6500	1.2707	-73.98	1.8691
18:15:00	148.93	2172.32	18.6667	1.2711	-73.24	1.8647
18:16:00	149.08	2171.72	18.6833	1.2715	-73.84	1.8683
18:16:30	148.93	2170.87	18.6917	1.2716	-74.69	1.8733
18:17:30	148.93	2171.67	18.7083	1.2720	-73.90	1.8686
18:19:30	148.93	2171.42	18.7417	1.2728	-74.14	1.8700
18:20:00	148.93	2171.25	18.7500	1.2730	-74.31	1.8710
18:20:30	148.93	2171.79	18.7583	1.2732	-73.77	1.8679
18:21:00	148.93	2171.80	18.7667	1.2734	-73.76	1.8678
18:21:30	148.93	2173.01	18.7750	1.2736	-72.55	1.8606
18:22:00	148.93	2171.48	18.7833	1.2738	-74.08	1.8697
18:24:00	148.93	2171.08	18.8167	1.2745	-74.48	1.8721
18:26:00	149.08	2171.92	18.8500	1.2753	-73.64	1.8671
18:26:30	148.93	2170.51	18.8583	1.2755	-75.05	1.8754
18:27:00	148.93	2167.50	18.8667	1.2757	-78.06	1.8924
18:27:30	148.93	2165.74	18.8750	1.2759	-79.82	1.9021
18:28:00	APPROX. 3 LITRES OF SAND FOUND IN SANDTRAP.					
18:28:00	148.93	2167.66	18.8833	1.2761	-77.90	1.8915

16-OCT-84	SDT degF	SDP psia	t-t0 HR	L(t-t0)	P-P0 psia	L(P-P0)
18:28:30	148.93	2168.87	18.8917	1.2763	-76.69	1.8847
18:29:30	148.93	2168.69	18.9083	1.2767	-76.87	1.8857
18:31:30	148.93	2169.51	18.9417	1.2774	-76.05	1.8811
18:32:00	148.93	2169.39	18.9500	1.2776	-76.17	1.8818
18:32:30	148.93	2170.08	18.9583	1.2778	-75.48	1.8779
18:33:00	148.93	2170.28	18.9667	1.2780	-75.28	1.8767
18:33:30	148.93	2169.51	18.9750	1.2782	-76.05	1.8811
18:34:30	148.93	2169.59	18.9917	1.2786	-75.97	1.8806
18:35:00	149.08	2170.06	19.0000	1.2788	-75.50	1.8780
18:39:00	148.93	2170.47	19.0667	1.2803	-75.09	1.8756
18:41:00	149.08	2171.11	19.1000	1.2810	-74.45	1.8718
18:43:00	148.93	2170.75	19.1333	1.2818	-74.81	1.8740
18:44:00	149.08	2169.90	19.1500	1.2822	-75.66	1.8788
18:44:30	149.08	2169.23	19.1583	1.2824	-76.33	1.8827
18:45:00	148.93	2170.73	19.1667	1.2825	-74.83	1.8741
18:45:30	148.93	2171.53	19.1750	1.2827	-74.03	1.8694
18:46:30	149.08	2170.40	19.1917	1.2831	-75.16	1.8760
18:47:30	149.08	2170.25	19.2083	1.2835	-75.31	1.8769
18:48:00	149.08	2170.51	19.2167	1.2837	-75.05	1.8754
18:49:00	148.93	2170.27	19.2333	1.2841	-75.29	1.8768
18:49:30	148.93	2169.90	19.2417	1.2842	-75.66	1.8788
18:50:00	148.93	2170.21	19.2500	1.2844	-75.35	1.8771
18:50:30	148.93	2170.97	19.2583	1.2846	-74.59	1.8727
18:51:00	149.08	2168.95	19.2667	1.2848	-76.61	1.8843
18:51:30	148.93	2168.87	19.2750	1.2850	-76.69	1.8847
18:52:30	148.93	2170.20	19.2917	1.2854	-75.36	1.8772
18:53:00	148.93	2170.80	19.3000	1.2856	-74.76	1.8737
18:54:00	149.08	2170.77	19.3167	1.2859	-74.79	1.8739
18:55:00	149.08	2171.15	19.3333	1.2863	-74.41	1.8717
18:55:30	149.08	2170.89	19.3417	1.2865	-74.67	1.8732
18:56:00	149.08	2171.16	19.3500	1.2867	-74.40	1.8715
18:56:30	149.08	2171.98	19.3583	1.2869	-73.58	1.8668
18:57:00	148.93	2170.77	19.3667	1.2871	-74.79	1.8739
18:57:30	148.93	2170.54	19.3750	1.2872	-75.02	1.8752
18:58:00	149.08	2171.01	19.3833	1.2874	-74.55	1.8725
18:58:30	149.08	2170.77	19.3917	1.2876	-74.79	1.8739
18:59:00	148.93	2169.96	19.4000	1.2878	-75.60	1.8785
19:00:00	148.93	2170.49	19.4167	1.2882	-75.07	1.8755
19:01:00	148.93	2170.01	19.4333	1.2885	-75.55	1.8783
19:01:30	148.93	2171.16	19.4417	1.2887	-74.40	1.8715
19:02:00	149.08	2171.35	19.4500	1.2889	-74.21	1.8704
19:04:00	148.93	2170.65	19.4833	1.2897	-74.91	1.8746
19:04:30	149.08	2170.96	19.4917	1.2898	-74.60	1.8728
19:05:30	148.93	2169.25	19.5083	1.2902	-76.31	1.8826
19:06:30	149.08	2169.77	19.5250	1.2906	-75.79	1.8796
19:07:00	148.93	2170.28	19.5333	1.2908	-75.28	1.8767
19:08:00	148.93	2170.13	19.5500	1.2911	-75.43	1.8776
19:08:30	148.93	2170.77	19.5583	1.2913	-74.79	1.8739
19:09:30	148.93	2170.73	19.5750	1.2917	-74.83	1.8741
19:10:00	148.93	2171.48	19.5833	1.2919	-74.08	1.8697
19:11:00	149.08	2170.46	19.6000	1.2923	-75.10	1.8757
19:11:30	148.93	2171.22	19.6083	1.2924	-74.34	1.8712
19:12:00	148.93	2171.42	19.6167	1.2926	-74.14	1.8700
19:13:00	148.93	2170.96	19.6333	1.2930	-74.60	1.8728
19:13:30	149.08	2170.20	19.6417	1.2932	-75.36	1.8772
19:15:30	148.93	2171.01	19.6750	1.2939	-74.55	1.8725
19:17:30	149.08	2170.82	19.7083	1.2946	-74.74	1.8736
19:18:00	148.93	2170.40	19.7167	1.2948	-75.16	1.8760
19:18:30	148.93	2171.04	19.7250	1.2950	-74.52	1.8723
19:19:00	149.08	2170.92	19.7333	1.2952	-74.64	1.8730
19:19:30	148.93	2171.41	19.7417	1.2954	-74.15	1.8701
19:20:30	148.93	2171.13	19.7583	1.2958	-74.43	1.8718

16-OCT-84	SDT degF	SDP psia	t-t0 HR	L(t-t0)	P-P0 psia	L(P-P0)
19:21:00	148.93	2171.20	19.7667	1.2959	-74.36	1.8713
19:22:00	148.93	2170.13	19.7833	1.2963	-75.43	1.8776
19:22:30	149.08	2169.59	19.7917	1.2965	-75.97	1.8806
19:23:30	149.08	2169.49	19.8083	1.2968	-76.07	1.8812
19:24:30	149.08	2170.34	19.8250	1.2972	-75.22	1.8764
19:25:00	149.08	2170.20	19.8333	1.2974	-75.36	1.8772
19:25:30	149.08	2170.56	19.8417	1.2976	-75.00	1.8751
19:26:00	148.93	2171.34	19.8500	1.2978	-74.22	1.8705
19:26:30	148.93	2170.99	19.8583	1.2979	-74.57	1.8726
19:27:00	148.93	2171.10	19.8667	1.2981	-74.46	1.8719
19:27:30	148.93	2169.21	19.8750	1.2983	-76.35	1.8828
19:28:00	148.93	2169.37	19.8833	1.2985	-76.19	1.8819
19:28:30	149.08	2170.06	19.8917	1.2987	-75.50	1.8780
19:29:00	149.08	2169.70	19.9000	1.2989	-75.86	1.8800
19:29:30	148.93	2170.35	19.9083	1.2990	-75.21	1.8763
19:30:00	149.08	2170.30	19.9167	1.2992	-75.26	1.8766
19:30:30	148.93	2169.68	19.9250	1.2994	-75.88	1.8801
19:31:00	148.93	2169.65	19.9333	1.2996	-75.92	1.8803
19:31:30	149.08	2170.23	19.9417	1.2998	-75.33	1.8770
19:32:30	148.93	2170.04	19.9583	1.3001	-75.52	1.8781
19:33:30	148.93	2170.37	19.9750	1.3005	-75.19	1.8762
19:34:00	149.08	2171.37	19.9833	1.3007	-74.19	1.8703
19:34:30	148.93	2170.27	19.9917	1.3008	-75.29	1.8768
19:35:30	148.93	2170.09	20.0083	1.3012	-75.47	1.8778
19:36:30	148.93	2168.99	20.0250	1.3016	-76.57	1.8841
19:37:30	148.93	2169.99	20.0417	1.3019	-75.57	1.8783
19:38:30	148.93	2170.30	20.0583	1.3023	-75.26	1.8766
19:39:30	149.08	2171.15	20.0750	1.3027	-74.41	1.8717
19:40:30	149.08	2168.94	20.0917	1.3030	-76.62	1.8844
19:41:00	149.08	2169.78	20.1000	1.3032	-75.78	1.8795
19:41:30	148.93	2169.78	20.1083	1.3034	-75.78	1.8795
19:42:00	148.93	2169.20	20.1167	1.3036	-76.36	1.8829
19:43:00	148.93	2169.99	20.1333	1.3039	-75.57	1.8783
19:44:00	148.93	2169.16	20.1500	1.3043	-76.40	1.8831
19:45:00	148.93	2170.20	20.1667	1.3046	-75.36	1.8772
19:45:30	148.93	2170.18	20.1750	1.3048	-75.38	1.8773
19:46:30	148.93	2170.84	20.1917	1.3052	-74.72	1.8735
19:47:00	148.93	2170.97	20.2000	1.3054	-74.59	1.8727
19:48:00	148.93	2170.59	20.2167	1.3057	-74.97	1.8749
19:48:30	149.08	2169.78	20.2250	1.3059	-75.78	1.8795
19:49:00	149.08	2169.77	20.2333	1.3061	-75.79	1.8796
19:50:00	148.93	2170.42	20.2500	1.3064	-75.14	1.8759
19:52:00	149.08	2170.58	20.2833	1.3071	-74.98	1.8750
19:52:30	149.08	2170.21	20.2917	1.3073	-75.35	1.8771
19:53:00	149.08	2170.32	20.3000	1.3075	-75.24	1.8765
19:53:30	148.93	2171.35	20.3083	1.3077	-74.21	1.8704
19:54:00	148.93	2170.46	20.3167	1.3079	-75.10	1.8757
19:55:00	149.08	2170.59	20.3333	1.3082	-74.97	1.8749
19:55:30	148.93	2170.30	20.3417	1.3084	-75.26	1.8766
19:56:00	148.93	2169.58	20.3500	1.3086	-75.98	1.8807
19:56:30	149.08	2169.39	20.3583	1.3087	-76.17	1.8818
19:58:30	148.93	2170.65	20.3917	1.3095	-74.91	1.8746
19:59:30	148.93	2169.83	20.4083	1.3098	-75.73	1.8792
20:00:00	148.93	2167.83	20.4167	1.3100	-77.73	1.8906
20:00:30	148.93	2167.80	20.4250	1.3102	-77.76	1.8908
20:01:30	148.93	2169.49	20.4417	1.3105	-76.07	1.8812
20:02:00	148.93	2170.65	20.4500	1.3107	-74.91	1.8746
20:04:00	148.93	2169.82	20.4833	1.3114	-75.74	1.8793
20:04:30	149.08	2169.61	20.4917	1.3116	-75.95	1.8805
20:05:00	148.93	2170.37	20.5000	1.3118	-75.19	1.8762
20:05:30	148.93	2169.28	20.5083	1.3119	-76.28	1.8824
20:06:00	148.93	2168.94	20.5167	1.3121	-76.62	1.8844

16-OCT-84	SDT degF	SDP psia	t-t0 HR	L(t-t0)	P-P0 psia	L(P-P0)
20:07:00	149.08	2170.13	20.5333	1.3125	-75.43	1.8776
20:07:30	149.08	2169.35	20.5417	1.3126	-76.21	1.8820
20:09:30	148.93	2169.90	20.5750	1.3133	-75.66	1.8788
20:10:00	149.08	2169.94	20.5833	1.3135	-75.62	1.8786
20:11:00	148.93	2170.87	20.6000	1.3139	-74.69	1.8733
20:12:00	148.93	2170.61	20.6167	1.3142	-74.95	1.8748
20:12:30	148.93	2170.91	20.6250	1.3144	-74.65	1.8731
20:13:00	148.93	2169.49	20.6333	1.3146	-76.07	1.8812
20:15:00	149.08	2168.73	20.6667	1.3153	-76.83	1.8855
20:15:30	148.93	2168.89	20.6750	1.3154	-76.67	1.8847
20:16:30	149.08	2170.61	20.6917	1.3158	-74.95	1.8748
20:17:00	148.93	2170.87	20.7000	1.3160	-74.69	1.8733
20:17:30	148.93	2170.09	20.7083	1.3161	-75.47	1.8778
20:18:30	149.08	2170.16	20.7250	1.3165	-75.40	1.8774
20:19:30	149.08	2168.97	20.7417	1.3168	-76.59	1.8842
20:20:00	149.08	2170.30	20.7500	1.3170	-75.26	1.8766
20:20:30	149.08	2169.56	20.7583	1.3172	-76.00	1.8808
20:21:30	148.93	2169.66	20.7750	1.3175	-75.90	1.8802
20:22:00	148.93	2169.33	20.7833	1.3177	-76.23	1.8821
20:22:30	149.08	2169.92	20.7917	1.3179	-75.64	1.8787
20:23:00	148.93	2169.80	20.8000	1.3181	-75.76	1.8794
20:23:30	148.93	2170.51	20.8083	1.3182	-75.05	1.8754
20:25:30	148.93	2170.01	20.8417	1.3189	-75.55	1.8783
20:26:00	149.08	2170.02	20.8500	1.3191	-75.54	1.8782
20:26:30	148.93	2170.70	20.8583	1.3193	-74.86	1.8743
20:27:00	148.93	2169.92	20.8667	1.3195	-75.64	1.8787
20:28:00	148.93	2170.66	20.8833	1.3198	-74.90	1.8745
20:28:30	149.08	2170.35	20.8917	1.3200	-75.21	1.8763
20:29:00	149.08	2170.94	20.9000	1.3201	-74.62	1.8729
20:29:30	148.93	2170.66	20.9083	1.3203	-74.90	1.8745
20:30:00	148.93	2169.82	20.9167	1.3205	-75.74	1.8793
20:30:30	148.93	2169.66	20.9250	1.3207	-75.90	1.8802
20:31:00	149.08	2170.08	20.9333	1.3208	-75.48	1.8779
20:31:30	148.93	2169.87	20.9417	1.3210	-75.69	1.8790
20:32:00	148.93	2170.32	20.9500	1.3212	-75.24	1.8765
20:33:00	148.93	2169.63	20.9667	1.3215	-75.93	1.8804
20:33:30	149.08	2168.99	20.9750	1.3217	-76.57	1.8841
20:34:00	148.93	2169.32	20.9833	1.3219	-76.24	1.8822
20:34:30	149.08	2170.18	20.9917	1.3220	-75.38	1.8773
20:35:00	149.08	2169.82	21.0000	1.3222	-75.74	1.8793
20:35:30	149.08	2171.53	21.0083	1.3224	-74.03	1.8694
20:36:00	148.93	2169.40	21.0167	1.3226	-76.16	1.8817
20:36:30	149.08	2170.42	21.0250	1.3227	-75.14	1.8759
20:37:00	149.08	2169.44	21.0333	1.3229	-76.12	1.8815
20:37:30	149.08	2170.09	21.0417	1.3231	-75.47	1.8778
20:38:00	148.93	2169.30	21.0500	1.3233	-76.26	1.8823
20:38:30	149.08	2169.40	21.0583	1.3234	-76.16	1.8817
20:39:00	149.08	2168.80	21.0667	1.3236	-76.76	1.8851
20:39:30	148.93	2169.45	21.0750	1.3238	-76.11	1.8814
20:40:30	149.08	2169.49	21.0917	1.3241	-76.07	1.8812
20:41:00	149.08	2170.20	21.1000	1.3243	-75.36	1.8772
20:41:30	149.08	2169.90	21.1083	1.3245	-75.66	1.8788
20:42:00	148.93	2170.49	21.1167	1.3246	-75.07	1.8755
20:42:30	149.08	2170.59	21.1250	1.3248	-74.97	1.8749
20:43:00	149.08	2169.92	21.1333	1.3250	-75.64	1.8787
20:43:30	148.93	2170.18	21.1417	1.3251	-75.38	1.8773
20:44:00	148.93	2169.78	21.1500	1.3253	-75.78	1.8795
20:45:00	149.08	2170.09	21.1667	1.3257	-75.47	1.8778
20:45:30	149.08	2169.26	21.1750	1.3258	-76.30	1.8825
20:46:00	149.08	2169.97	21.1833	1.3260	-75.59	1.8784
20:47:00	148.93	2169.09	21.2000	1.3263	-76.47	1.8835
20:49:00	149.08	2170.77	21.2333	1.3270	-74.79	1.8739

16-OCT-84	SDT degF	SDP psia	t-t0 HR	L(t-t0)	P-P0 psia	L(P-P0)
20:50:00	149.08	2169.99	21.2500	1.3274	-75.57	1.8783
20:51:00	149.08	2169.90	21.2667	1.3277	-75.66	1.8788
20:51:30	148.93	2170.01	21.2750	1.3279	-75.55	1.8783
20:52:00	148.93	2169.56	21.2833	1.3280	-76.00	1.8808
20:53:00	149.08	2169.59	21.3000	1.3284	-75.97	1.8806
20:54:00	149.08	2170.59	21.3167	1.3287	-74.97	1.8749
20:54:30	149.08	2170.32	21.3250	1.3289	-75.24	1.8765
20:55:00	149.08	2169.13	21.3333	1.3291	-76.43	1.8833
20:55:30	148.93	2168.63	21.3417	1.3292	-76.93	1.8861
20:56:30	148.93	2170.94	21.3583	1.3296	-74.62	1.8729
20:57:30	149.08	2169.44	21.3750	1.3299	-76.12	1.8815
20:58:00	148.93	2169.68	21.3833	1.3301	-75.88	1.8801
20:58:30	149.08	2169.18	21.3917	1.3302	-76.38	1.8830
20:59:30	149.08	2169.33	21.4083	1.3306	-76.23	1.8821
21:00:00	148.93	2169.73	21.4167	1.3308	-75.83	1.8798
21:00:30	148.93	2169.68	21.4250	1.3309	-75.88	1.8801
21:01:30	148.93	2170.23	21.4417	1.3313	-75.33	1.8770
21:03:30	149.08	2169.58	21.4750	1.3319	-75.98	1.8807
21:07:30	149.08	2169.52	21.5417	1.3333	-76.04	1.8810
21:08:30	149.08	2169.09	21.5583	1.3336	-76.47	1.8835
21:10:30	148.93	2169.56	21.5917	1.3343	-76.00	1.8808
21:11:30	149.08	2169.14	21.6083	1.3346	-76.42	1.8832
21:12:00	148.93	2168.94	21.6167	1.3348	-76.62	1.8844
21:12:30	148.93	2168.25	21.6250	1.3350	-77.31	1.8883
21:13:00	149.08	2169.33	21.6333	1.3351	-76.23	1.8821
21:13:30	149.08	2169.07	21.6417	1.3353	-76.49	1.8836
21:14:00	149.08	2169.47	21.6500	1.3355	-76.09	1.8813
21:14:30	148.93	2168.32	21.6583	1.3356	-77.24	1.8879
21:15:00	148.93	2169.44	21.6667	1.3358	-76.12	1.8815
21:15:30	149.08	2169.85	21.6750	1.3360	-75.71	1.8791
21:16:30	149.08	2168.95	21.6917	1.3363	-76.61	1.8843
21:18:30	148.93	2169.90	21.7250	1.3370	-75.66	1.8788
21:19:00	148.93	2169.59	21.7333	1.3371	-75.97	1.8806
21:19:30	148.93	2169.92	21.7417	1.3373	-75.64	1.8787
21:20:00	148.93	2168.49	21.7500	1.3375	-77.07	1.8869
21:20:30	148.93	2167.90	21.7583	1.3376	-77.66	1.8902
21:21:00	149.08	2167.90	21.7667	1.3378	-77.66	1.8902
21:21:30	148.93	2168.69	21.7750	1.3380	-76.87	1.8857
21:22:00	148.93	2169.02	21.7833	1.3381	-76.54	1.8839
21:23:00	148.93	2170.91	21.8000	1.3385	-74.65	1.8731
21:23:30	148.93	2169.87	21.8083	1.3386	-75.69	1.8790
21:24:00	148.93	2169.80	21.8167	1.3388	-75.76	1.8794
21:24:30	149.08	2167.87	21.8250	1.3390	-77.69	1.8904
21:25:00	148.93	2168.52	21.8333	1.3391	-77.04	1.8867
21:25:30	148.93	2169.89	21.8417	1.3393	-75.67	1.8789
21:26:00	148.93	2169.78	21.8500	1.3395	-75.78	1.8795
21:26:30	149.08	2168.92	21.8583	1.3396	-76.64	1.8845
21:28:30	148.93	2169.47	21.8917	1.3403	-76.09	1.8813
21:29:00	149.08	2169.39	21.9000	1.3404	-76.17	1.8818
21:29:30	149.08	2169.73	21.9083	1.3406	-75.83	1.8798
21:30:00	148.93	2168.35	21.9167	1.3408	-77.21	1.8877
21:31:00	148.93	2167.61	21.9333	1.3411	-77.95	1.8918
21:32:00	149.08	2168.54	21.9500	1.3414	-77.02	1.8866
21:32:30	149.08	2170.01	21.9583	1.3416	-75.55	1.8782
21:33:30	148.93	2169.80	21.9750	1.3419	-75.76	1.8794
21:34:00	148.93	2169.13	21.9833	1.3421	-76.43	1.8833
21:35:00	148.93	2169.14	22.0000	1.3424	-76.42	1.8832
21:35:30	148.93	2169.28	22.0083	1.3426	-76.28	1.8824
21:36:00	149.08	2168.97	22.0167	1.3428	-76.59	1.8842
21:36:30	148.93	2169.30	22.0250	1.3429	-76.26	1.8823
21:37:30	149.08	2169.01	22.0417	1.3432	-76.55	1.8840
21:38:00	148.93	2168.83	22.0500	1.3434	-76.73	1.8849

16-OCT-84	SDT degF	SDP psia	t-t0 HR	L(t-t0)	P-P0 psia	L(P-P0)
21:40:00	149.08	2169.14	22.0833	1.3441	-76.42	1.8832
21:40:30	149.08	2169.23	22.0917	1.3442	-76.33	1.8827
21:41:00	149.08	2168.87	22.1000	1.3444	-76.69	1.8848
21:43:00	149.08	2168.80	22.1333	1.3450	-76.76	1.8851
21:44:00	149.08	2169.20	22.1500	1.3454	-76.36	1.8829
21:44:30	149.08	2169.54	22.1583	1.3455	-76.02	1.8809
21:45:30	149.08	2168.95	22.1750	1.3459	-76.61	1.8843
21:46:00	148.93	2168.52	22.1833	1.3460	-77.04	1.8867
21:46:30	148.93	2169.16	22.1917	1.3462	-76.40	1.8831
21:48:30	148.93	2169.70	22.2250	1.3468	-75.86	1.8800
21:49:00	148.93	2169.87	22.2333	1.3470	-75.69	1.8790
21:49:30	148.93	2169.13	22.2417	1.3472	-76.43	1.8833
21:50:00	148.93	2167.85	22.2500	1.3473	-77.71	1.8905
21:51:00	149.08	2168.25	22.2667	1.3477	-77.31	1.8883
21:51:30	149.08	2169.54	22.2750	1.3478	-76.02	1.8809
21:52:00	148.93	2170.18	22.2833	1.3480	-75.38	1.8773
21:53:00	149.08	2169.28	22.3000	1.3483	-76.28	1.8824
21:53:30	148.93	2169.04	22.3083	1.3485	-76.52	1.8838
21:55:30	149.08	2169.11	22.3417	1.3491	-76.45	1.8834
21:56:30	148.93	2169.01	22.3583	1.3494	-76.55	1.8840
21:57:30	149.08	2169.61	22.3750	1.3498	-75.95	1.8805
21:59:30	149.08	2169.11	22.4083	1.3504	-76.45	1.8834
22:03:30	148.93	2169.16	22.4750	1.3517	-76.40	1.8831
22:04:30	149.08	2169.49	22.4917	1.3520	-76.07	1.8812
22:05:00	148.93	2169.08	22.5000	1.3522	-76.48	1.8836
22:06:00	149.08	2169.61	22.5167	1.3525	-75.95	1.8805
22:08:00	149.08	2169.20	22.5500	1.3531	-76.36	1.8829
22:09:00	148.93	2169.20	22.5667	1.3535	-76.36	1.8829
22:09:30	149.08	2168.89	22.5750	1.3536	-76.68	1.8847
22:10:30	148.93	2169.35	22.5917	1.3539	-76.21	1.8820
22:18:30	148.93	2169.18	22.7250	1.3565	-76.38	1.8830
22:19:30	148.93	2169.23	22.7417	1.3568	-76.33	1.8827
22:20:00	149.08	2168.97	22.7500	1.3570	-76.59	1.8842
22:21:00	149.08	2169.26	22.7667	1.3573	-76.30	1.8825
22:23:00	149.08	2168.92	22.8000	1.3579	-76.64	1.8845
22:24:00	149.08	2168.82	22.8167	1.3583	-76.74	1.8850
22:24:30	149.08	2169.28	22.8250	1.3584	-76.28	1.8824
22:28:30	148.93	2168.75	22.8917	1.3597	-76.81	1.8854
22:29:30	148.93	2168.63	22.9083	1.3600	-76.93	1.8861
22:30:00	148.93	2168.56	22.9167	1.3602	-77.00	1.8865
22:32:00	148.93	2169.06	22.9500	1.3608	-76.50	1.8837
22:34:00	149.08	2169.04	22.9833	1.3614	-76.52	1.8838
22:35:00	148.93	2169.20	23.0000	1.3617	-76.36	1.8829
22:36:00	149.08	2168.82	23.0167	1.3620	-76.74	1.8850
22:38:00	148.93	2169.16	23.0500	1.3627	-76.40	1.8831
22:42:00	149.08	2169.49	23.1167	1.3639	-76.07	1.8812
22:44:00	149.08	2168.99	23.1500	1.3646	-76.57	1.8841
22:44:30	149.08	2168.94	23.1583	1.3647	-76.62	1.8844
22:45:30	148.93	2169.30	23.1750	1.3650	-76.26	1.8823
22:47:30	148.93	2169.08	23.2083	1.3656	-76.48	1.8836
22:48:30	148.93	2168.94	23.2250	1.3660	-76.62	1.8844
22:49:00	148.93	2168.57	23.2333	1.3661	-76.99	1.8864
22:50:00	149.08	2168.89	23.2500	1.3664	-76.68	1.8847
22:52:00	148.93	2168.51	23.2833	1.3670	-77.05	1.8868
22:54:00	148.93	2168.63	23.3167	1.3677	-76.93	1.8861
22:55:00	148.93	2168.11	23.3333	1.3680	-77.45	1.8890
22:59:00	148.93	2168.16	23.4000	1.3692	-77.40	1.8887
22:59:30	148.93	2168.45	23.4083	1.3694	-77.11	1.8871
23:01:30	149.08	2167.85	23.4417	1.3700	-77.71	1.8905
23:02:00	148.93	2167.83	23.4500	1.3701	-77.73	1.8906
23:04:00	149.08	2166.31	23.4833	1.3708	-79.25	1.8990
23:05:00	149.08	2166.12	23.5000	1.3711	-79.44	1.9000

16-OCT-84	SDT degF	SDP psia	t-t0 HR	L(t-t0)	P-P0 psia	L(P-P0)
23:06:00	148.93	2166.42	23.5167	1.3714	-79.14	1.8984
23:07:00	148.93	2165.78	23.5333	1.3717	-79.78	1.9019
23:07:30	148.93	2166.16	23.5417	1.3718	-79.40	1.8998
23:08:30	149.08	2165.38	23.5583	1.3721	-80.18	1.9041
23:10:30	149.08	2165.60	23.5917	1.3728	-79.96	1.9029
23:11:30	149.08	2165.95	23.6083	1.3731	-79.61	1.9010
23:13:30	148.93	2165.55	23.6417	1.3737	-80.01	1.9031
23:14:00	149.08	2166.00	23.6500	1.3738	-79.56	1.9007
23:14:30	148.93	2165.57	23.6583	1.3740	-79.99	1.9030
23:15:00	149.08	2166.24	23.6667	1.3741	-79.32	1.8994
23:16:00	148.93	2166.16	23.6833	1.3744	-79.40	1.8998
23:16:30	149.08	2165.71	23.6917	1.3746	-79.85	1.9023
23:18:30	148.93	2165.43	23.7250	1.3752	-80.13	1.9038
23:19:30	149.08	2165.31	23.7417	1.3755	-80.25	1.9044
23:20:30	149.08	2165.86	23.7583	1.3758	-79.70	1.9014
23:21:00	148.93	2166.30	23.7667	1.3760	-79.26	1.8991
23:23:00	148.93	2166.35	23.8000	1.3766	-79.21	1.8988
23:23:30	149.08	2166.61	23.8083	1.3767	-78.95	1.8974
23:24:30	149.08	2165.98	23.8250	1.3770	-79.58	1.9008
23:25:30	149.08	2166.90	23.8417	1.3773	-78.66	1.8958
23:26:30	149.08	2166.35	23.8583	1.3776	-79.21	1.8988
23:27:30	149.08	2166.38	23.8750	1.3779	-79.18	1.8986
23:28:00	149.08	2165.79	23.8833	1.3781	-79.77	1.9018
23:30:00	149.08	2165.79	23.9167	1.3787	-79.77	1.9018
23:31:00	149.08	2165.57	23.9333	1.3790	-79.99	1.9030
23:33:00	149.08	2166.36	23.9667	1.3796	-79.20	1.8987
23:35:00	149.08	2166.05	24.0000	1.3802	-79.51	1.9004
23:36:00	149.08	2165.98	24.0167	1.3805	-79.58	1.9008
23:36:30	148.93	2166.36	24.0250	1.3807	-79.20	1.8987
23:37:30	148.93	2166.14	24.0417	1.3810	-79.42	1.8999
23:38:30	148.93	2165.43	24.0583	1.3813	-80.13	1.9038
23:39:00	149.08	2165.86	24.0667	1.3814	-79.70	1.9014
23:41:00	149.08	2165.76	24.1000	1.3820	-79.80	1.9020
23:42:00	148.93	2166.16	24.1167	1.3823	-79.40	1.8998
23:44:00	149.08	2165.85	24.1500	1.3829	-79.71	1.9015
23:45:00	149.08	2166.11	24.1667	1.3832	-79.45	1.9001
23:47:00	148.93	2165.73	24.2000	1.3838	-79.83	1.9022
23:47:30	149.08	2166.30	24.2083	1.3840	-79.26	1.8991
23:51:30	149.08	2165.76	24.2750	1.3852	-79.80	1.9020
23:52:30	149.08	2165.29	24.2917	1.3855	-80.27	1.9045
23:53:00	149.08	2165.10	24.3000	1.3856	-80.46	1.9056
23:54:00	148.93	2165.92	24.3167	1.3859	-79.64	1.9012
23:54:30	149.08	2166.40	24.3250	1.3861	-79.16	1.8985
23:58:30	149.08	2166.16	24.3917	1.3872	-79.40	1.8998
23:59:30	149.08	2166.16	24.4083	1.3875	-79.40	1.8998
00:01:30	149.08	2165.47	24.4417	1.3881	-80.09	1.9036
00:02:30	149.08	2165.81	24.4583	1.3884	-79.75	1.9017
00:03:00	148.93	2166.10	24.4667	1.3886	-79.46	1.9001
00:04:00	149.08	2165.86	24.4833	1.3889	-79.70	1.9014
00:05:00	148.93	2166.50	24.5000	1.3892	-79.06	1.8979
00:07:00	149.08	2166.21	24.5333	1.3898	-79.35	1.8996
00:08:00	148.93	2165.92	24.5500	1.3901	-79.64	1.9012
00:10:00	149.08	2166.36	24.5833	1.3906	-79.20	1.8987
00:12:00	149.08	2165.78	24.6167	1.3912	-79.78	1.9019
00:13:00	148.93	2166.19	24.6333	1.3915	-79.37	1.8996
00:21:00	148.93	2165.64	24.7667	1.3939	-79.92	1.9027
00:23:00	148.93	2165.66	24.8000	1.3945	-79.90	1.9026
00:23:30	149.08	2165.97	24.8083	1.3946	-79.59	1.9009
00:25:30	148.93	2165.69	24.8417	1.3952	-79.87	1.9024
00:26:30	148.93	2165.52	24.8583	1.3955	-80.04	1.9033
00:27:00	148.93	2165.85	24.8667	1.3956	-79.71	1.9015
00:31:00	148.93	2165.54	24.9333	1.3968	-80.02	1.9032

16-OCT-84	SDT degF	SDP psia	t-t0 HR	L(t-t0)	P-P0 psia	L(P-P0)
00:35:00	149.08	2165.97	25.0000	1.3979	-79.59	1.9009
00:35:30	149.08	2165.62	25.0083	1.3981	-79.94	1.9028
00:36:30	149.08	2165.97	25.0250	1.3984	-79.59	1.9009
00:37:00	149.08	2166.05	25.0333	1.3985	-79.51	1.9004
00:38:00	149.08	2165.48	25.0500	1.3988	-80.08	1.9035
00:42:00	148.93	2165.86	25.1167	1.4000	-79.70	1.9014
00:42:30	149.08	2165.62	25.1250	1.4001	-79.94	1.9028
00:43:30	148.93	2165.76	25.1417	1.4004	-79.80	1.9020
00:44:30	149.08	2165.16	25.1583	1.4007	-80.40	1.9053
00:45:00	149.08	2164.86	25.1667	1.4008	-80.70	1.9069
00:45:30	148.93	2165.12	25.1750	1.4010	-80.44	1.9055
00:46:30	149.08	2164.91	25.1917	1.4013	-80.65	1.9066
00:47:30	148.93	2165.50	25.2083	1.4015	-80.06	1.9034
00:48:00	149.08	2165.19	25.2167	1.4017	-80.37	1.9051
00:48:30	148.93	2165.52	25.2250	1.4018	-80.04	1.9033
00:50:30	149.08	2165.47	25.2583	1.4024	-80.09	1.9036
00:51:30	149.08	2165.71	25.2750	1.4027	-79.85	1.9023
00:55:30	149.08	2165.24	25.3417	1.4038	-80.32	1.9048
00:57:30	149.08	2165.43	25.3750	1.4044	-80.13	1.9038
00:58:00	149.08	2165.69	25.3833	1.4045	-79.87	1.9024
00:59:00	149.08	2165.36	25.4000	1.4048	-80.20	1.9042
01:01:00	149.08	2165.60	25.4333	1.4054	-79.96	1.9029
01:02:00	149.08	2165.36	25.4500	1.4057	-80.20	1.9042
01:03:00	149.08	2165.86	25.4667	1.4060	-79.70	1.9014
01:05:00	149.08	2165.54	25.5000	1.4065	-80.02	1.9032
01:05:30	148.93	2165.93	25.5083	1.4067	-79.63	1.9011
01:07:30	149.08	2165.40	25.5417	1.4072	-80.16	1.9040
01:15:30	149.08	2165.66	25.6750	1.4095	-79.90	1.9026
01:16:30	148.93	2166.00	25.6917	1.4098	-79.56	1.9007
01:18:30	148.93	2165.36	25.7250	1.4104	-80.20	1.9042
01:19:00	149.08	2165.76	25.7333	1.4105	-79.80	1.9020
01:20:00	148.93	2165.33	25.7500	1.4108	-80.23	1.9043
01:22:00	149.08	2165.35	25.7833	1.4113	-80.21	1.9043
01:22:30	149.08	2165.22	25.7917	1.4115	-80.34	1.9049
01:23:00	149.08	2165.64	25.8000	1.4116	-79.92	1.9027
01:25:00	148.93	2164.81	25.8333	1.4122	-80.75	1.9071
01:27:00	149.08	2165.05	25.8667	1.4127	-80.51	1.9058
01:27:30	148.93	2165.33	25.8750	1.4129	-80.23	1.9043
01:28:00	148.93	2165.14	25.8833	1.4130	-80.42	1.9054
01:28:30	149.08	2165.43	25.8917	1.4132	-80.13	1.9038
01:29:00	149.08	2165.14	25.9000	1.4133	-80.42	1.9054
01:33:00	148.93	2164.67	25.9667	1.4144	-80.89	1.9079
01:34:00	149.08	2164.53	25.9833	1.4147	-81.03	1.9086
01:35:00	149.08	2164.95	26.0000	1.4150	-80.61	1.9064
01:36:00	148.93	2164.88	26.0167	1.4153	-80.68	1.9068
01:36:30	148.93	2164.60	26.0250	1.4154	-80.96	1.9083
01:37:00	149.08	2165.14	26.0333	1.4155	-80.42	1.9054
01:41:00	149.08	2165.10	26.1000	1.4166	-80.46	1.9056
01:43:00	149.08	2165.14	26.1333	1.4172	-80.42	1.9054
01:44:00	149.08	2164.93	26.1500	1.4175	-80.63	1.9065
01:44:30	149.08	2164.66	26.1583	1.4176	-80.90	1.9080
01:45:00	148.93	2165.00	26.1667	1.4177	-80.56	1.9061
01:46:00	148.93	2164.93	26.1833	1.4180	-80.63	1.9065
01:46:30	148.93	2164.74	26.1917	1.4182	-80.82	1.9075
01:47:00	148.93	2165.22	26.2000	1.4183	-80.34	1.9049
01:49:00	148.93	2165.14	26.2333	1.4189	-80.42	1.9054
01:50:00	149.08	2165.74	26.2500	1.4191	-79.82	1.9021
01:52:00	148.93	2165.10	26.2833	1.4197	-80.46	1.9056
01:52:30	149.08	2164.78	26.2917	1.4198	-80.78	1.9073
01:53:30	148.93	2165.21	26.3083	1.4201	-80.35	1.9050
01:54:30	149.08	2164.40	26.3250	1.4204	-81.16	1.9094
01:55:30	149.08	2164.90	26.3417	1.4206	-80.66	1.9067

16-OCT-84	SDT degF	SDP psia	t-t0 HR	L(t-t0)	P-P0 psia	L(P-P0)
01:57:30	149.08	2164.97	26.3750	1.4212	-80.59	1.9063
01:58:00	149.08	2164.59	26.3833	1.4213	-80.97	1.9083
01:58:30	149.08	2164.97	26.3917	1.4215	-80.59	1.9063
01:59:00	148.93	2164.64	26.4000	1.4216	-80.92	1.9081
02:00:00	149.08	2165.16	26.4167	1.4219	-80.40	1.9053
02:01:00	149.08	2164.67	26.4333	1.4222	-80.89	1.9079
02:02:00	148.93	2164.62	26.4500	1.4224	-80.94	1.9082
02:02:30	149.08	2164.97	26.4583	1.4226	-80.59	1.9063
02:04:30	149.08	2164.74	26.4917	1.4231	-80.82	1.9075
02:05:00	148.93	2165.07	26.5000	1.4232	-80.49	1.9057
02:05:30	149.08	2164.91	26.5083	1.4234	-80.65	1.9066
02:06:30	149.08	2165.28	26.5250	1.4237	-80.28	1.9046
02:07:30	149.08	2164.84	26.5417	1.4239	-80.72	1.9070
02:11:30	149.08	2164.64	26.6083	1.4250	-80.92	1.9081
02:15:30	148.93	2164.97	26.6750	1.4261	-80.59	1.9063
02:19:30	149.08	2164.55	26.7417	1.4272	-81.01	1.9085
02:23:30	149.08	2164.86	26.8083	1.4283	-80.70	1.9069
02:27:30	148.93	2164.36	26.8750	1.4293	-81.20	1.9095
02:28:00	149.08	2164.36	26.8833	1.4295	-81.20	1.9095
02:30:00	149.08	2165.10	26.9167	1.4300	-80.46	1.9056
02:32:00	149.08	2164.84	26.9500	1.4306	-80.72	1.9070
02:32:30	148.93	2164.50	26.9583	1.4307	-81.06	1.9088
02:33:00	149.08	2164.83	26.9667	1.4308	-80.73	1.9070
02:33:30	148.93	2164.64	26.9750	1.4310	-80.92	1.9081
02:34:00	149.08	2165.02	26.9833	1.4311	-80.54	1.9060
02:34:30	149.08	2164.79	26.9917	1.4312	-80.77	1.9072
02:35:00	148.93	2164.98	27.0000	1.4314	-80.58	1.9062
02:35:30	149.08	2164.69	27.0083	1.4315	-80.87	1.9078
02:37:30	149.08	2164.95	27.0417	1.4320	-80.61	1.9064
02:38:30	148.93	2164.69	27.0583	1.4323	-80.87	1.9078
02:39:30	149.08	2165.35	27.0750	1.4326	-80.21	1.9043
02:41:30	149.08	2165.09	27.1083	1.4331	-80.47	1.9057
02:42:30	149.08	2165.24	27.1250	1.4334	-80.32	1.9048
02:43:00	149.08	2164.74	27.1333	1.4335	-80.82	1.9075
02:44:00	149.08	2165.24	27.1500	1.4338	-80.32	1.9048
02:45:00	149.08	2165.24	27.1667	1.4340	-80.32	1.9048
02:45:30	148.93	2165.31	27.1750	1.4342	-80.25	1.9044
02:46:30	149.08	2165.07	27.1917	1.4344	-80.49	1.9057
02:47:00	149.08	2164.98	27.2000	1.4346	-80.58	1.9062
02:51:00	148.93	2166.14	27.2667	1.4356	-79.42	1.8999
02:53:00	149.08	2165.71	27.3000	1.4362	-79.85	1.9023
03:01:00	149.08	2166.45	27.4333	1.4383	-79.11	1.8982
03:03:00	149.08	2166.05	27.4667	1.4388	-79.51	1.9004
03:11:00	149.08	2166.16	27.6000	1.4409	-79.40	1.8998
03:12:00	148.93	2165.69	27.6167	1.4412	-79.87	1.9024
03:14:00	149.08	2165.76	27.6500	1.4417	-79.80	1.9020
03:15:00	149.08	2165.73	27.6667	1.4420	-79.83	1.9022
03:15:30	149.08	2165.76	27.6750	1.4421	-79.80	1.9020
03:16:30	148.93	2165.29	27.6917	1.4423	-80.27	1.9045
03:17:00	149.08	2165.21	27.7000	1.4425	-80.35	1.9050
03:19:00	149.08	2165.78	27.7333	1.4430	-79.78	1.9019
03:27:00	149.08	2165.62	27.8667	1.4451	-79.94	1.9028
03:28:00	148.93	2165.09	27.8833	1.4453	-80.47	1.9057
03:30:00	148.93	2165.98	27.9167	1.4459	-79.58	1.9008
03:32:00	149.08	2165.81	27.9500	1.4464	-79.75	1.9017
03:32:30	149.08	2165.97	27.9583	1.4465	-79.59	1.9009
03:33:30	149.08	2165.66	27.9750	1.4468	-79.90	1.9026
03:35:30	149.08	2165.88	28.0083	1.4473	-79.68	1.9013
03:37:30	149.08	2165.59	28.0417	1.4478	-79.97	1.9029
03:39:30	149.08	2165.95	28.0750	1.4483	-79.61	1.9010
03:43:30	149.08	2165.67	28.1417	1.4493	-79.89	1.9025
03:44:30	148.93	2165.76	28.1583	1.4496	-79.80	1.9020

16-OCT-84	SDT degF	SDP psia	t-t0 HR	L(t-t0)	P-P0 psia	L(P-P0)
03:45:00	149.08	2166.11	28.1667	1.4497	-79.45	1.9001
03:45:30	149.08	2165.95	28.1750	1.4499	-79.61	1.9010
03:46:00	148.93	2166.45	28.1833	1.4500	-79.11	1.8982
03:48:00	149.08	2165.98	28.2167	1.4505	-79.58	1.9008
03:50:00	149.08	2166.43	28.2500	1.4510	-79.13	1.8983
03:52:00	149.08	2166.04	28.2833	1.4515	-79.52	1.9005
03:52:30	149.08	2165.64	28.2917	1.4517	-79.92	1.9027
04:00:30	149.08	2165.10	28.4250	1.4537	-80.46	1.9056
04:04:30	148.93	2165.35	28.4917	1.4547	-80.21	1.9043
04:06:30	149.08	2165.92	28.5250	1.4552	-79.64	1.9012
04:10:30	149.08	2165.88	28.5917	1.4562	-79.68	1.9013
04:11:00	149.08	2166.04	28.6000	1.4564	-79.52	1.9005
04:11:30	149.08	2165.76	28.6083	1.4565	-79.80	1.9020
04:12:30	149.08	2166.12	28.6250	1.4567	-79.44	1.9000
04:13:30	149.08	2165.83	28.6417	1.4570	-79.73	1.9016
04:14:30	149.08	2166.14	28.6583	1.4573	-79.42	1.8999
04:15:30	149.08	2165.62	28.6750	1.4575	-79.94	1.9028
04:19:30	149.08	2165.98	28.7417	1.4585	-79.58	1.9008
04:20:00	149.08	2166.21	28.7500	1.4586	-79.35	1.8996
04:28:00	149.08	2166.68	28.8833	1.4606	-78.89	1.8970
04:32:00	149.08	2166.69	28.9500	1.4616	-78.87	1.8969
04:34:00	149.08	2166.49	28.9833	1.4621	-79.07	1.8980
04:35:00	149.08	2166.36	29.0000	1.4624	-79.20	1.8987
04:37:00	148.93	2166.97	29.0333	1.4629	-78.59	1.8954
04:41:00	149.08	2166.57	29.1000	1.4639	-78.99	1.8976
04:42:00	149.08	2166.69	29.1167	1.4641	-78.87	1.8969
04:44:00	149.08	2166.31	29.1500	1.4646	-79.25	1.8990
04:48:00	149.08	2166.93	29.2167	1.4656	-78.63	1.8956
04:52:00	148.93	2166.78	29.2833	1.4666	-78.78	1.8964
04:54:00	149.08	2166.31	29.3167	1.4671	-79.25	1.8990
04:56:00	149.08	2166.47	29.3500	1.4676	-79.09	1.8981
04:57:00	149.08	2166.95	29.3667	1.4679	-78.61	1.8955
05:01:00	149.08	2166.68	29.4333	1.4688	-78.89	1.8970
05:03:00	149.08	2166.76	29.4667	1.4693	-78.80	1.8965
05:03:30	149.08	2166.54	29.4750	1.4695	-79.02	1.8978
05:04:30	149.08	2166.90	29.4917	1.4697	-78.66	1.8958
05:05:00	149.08	2166.49	29.5000	1.4698	-79.07	1.8980
05:09:00	149.08	2166.61	29.5667	1.4708	-78.95	1.8974
05:11:00	149.08	2166.64	29.6000	1.4713	-78.92	1.8972
05:12:00	149.08	2166.42	29.6167	1.4715	-79.14	1.8984
05:13:00	149.08	2166.73	29.6333	1.4718	-78.83	1.8967
05:15:00	149.08	2166.35	29.6667	1.4723	-79.21	1.8988
05:19:00	149.08	2166.61	29.7333	1.4732	-78.95	1.8974
05:21:00	149.08	2166.52	29.7667	1.4737	-79.04	1.8979
05:22:00	149.08	2166.69	29.7833	1.4740	-78.87	1.8969
05:22:30	149.08	2166.30	29.7917	1.4741	-79.26	1.8991
05:24:30	148.93	2166.59	29.8250	1.4746	-78.97	1.8975
05:26:30	149.08	2166.21	29.8583	1.4751	-79.35	1.8996
05:30:30	149.08	2166.19	29.9250	1.4760	-79.37	1.8996
05:31:00	149.08	2166.36	29.9333	1.4762	-79.20	1.8987
05:33:00	148.93	2166.57	29.9667	1.4766	-78.99	1.8976
05:34:00	149.08	2166.09	29.9833	1.4769	-79.47	1.9002
05:36:00	149.08	2166.43	30.0167	1.4774	-79.13	1.8983
05:37:00	149.08	2166.28	30.0333	1.4776	-79.28	1.8992
05:39:00	149.08	2166.50	30.0667	1.4781	-79.06	1.8979
05:41:00	149.08	2166.07	30.1000	1.4786	-79.49	1.9003
05:43:00	149.08	2166.30	30.1333	1.4790	-79.26	1.8991
05:44:00	149.08	2166.54	30.1500	1.4793	-79.02	1.8978
05:45:00	149.08	2166.26	30.1667	1.4795	-79.30	1.8993
05:46:00	149.08	2166.47	30.1833	1.4798	-79.09	1.8981
05:47:00	149.08	2166.11	30.2000	1.4800	-79.45	1.9001
05:51:00	149.08	2166.45	30.2667	1.4810	-79.11	1.8982

16-OCT-84	SDT degF	SDP psia	t-t0 HR	L(t-t0)	P-P0 psia	L(P-P0)
05:52:00	149.08	2165.95	30.2833	1.4812	-79.61	1.9010
05:54:00	149.08	2166.21	30.3167	1.4817	-79.35	1.8996
05:58:00	149.08	2165.98	30.3833	1.4826	-79.58	1.9008
06:00:00	148.93	2166.26	30.4167	1.4831	-79.30	1.8993
06:02:00	149.08	2166.18	30.4500	1.4836	-79.39	1.8997
06:04:00	149.08	2167.00	30.4833	1.4841	-78.56	1.8952
06:06:00	148.93	2167.26	30.5167	1.4845	-78.30	1.8938
06:08:00	149.08	2165.97	30.5500	1.4850	-79.59	1.9009
06:10:00	149.08	2166.66	30.5833	1.4855	-78.90	1.8971
06:12:00	148.93	2166.71	30.6167	1.4860	-78.85	1.8968
06:13:00	149.08	2166.24	30.6333	1.4862	-79.32	1.8994
06:14:00	148.93	2166.30	30.6500	1.4864	-79.26	1.8991
06:16:00	149.08	2167.26	30.6833	1.4869	-78.30	1.8937
06:17:00	149.08	2167.19	30.7000	1.4871	-78.37	1.8941
06:19:00	149.08	2166.19	30.7333	1.4876	-79.37	1.8996
06:21:00	148.93	2166.81	30.7667	1.4881	-78.75	1.8962
06:23:00	149.08	2166.04	30.8000	1.4886	-79.52	1.9005
06:25:00	149.08	2165.95	30.8333	1.4890	-79.61	1.9010
06:26:00	148.93	2166.40	30.8500	1.4893	-79.16	1.8985
06:28:00	148.93	2165.88	30.8833	1.4897	-79.68	1.9013
06:28:30	148.93	2165.29	30.8917	1.4898	-80.27	1.9045
06:29:30	149.08	2165.14	30.9083	1.4901	-80.42	1.9054
06:31:30	149.08	2165.85	30.9417	1.4905	-79.71	1.9015
06:33:30	149.08	2166.02	30.9750	1.4910	-79.54	1.9006
06:34:30	149.08	2165.43	30.9917	1.4912	-80.13	1.9038
06:38:30	149.08	2166.49	31.0583	1.4922	-79.07	1.8980
06:40:30	149.08	2166.18	31.0917	1.4926	-79.39	1.8997
06:41:30	149.08	2166.47	31.1083	1.4929	-79.09	1.8981
06:43:30	149.08	2166.38	31.1417	1.4933	-79.18	1.8986
06:44:00	149.08	2166.28	31.1500	1.4935	-79.28	1.8992
06:44:30	148.93	2166.59	31.1583	1.4936	-78.97	1.8975
06:46:30	149.08	2166.23	31.1917	1.4940	-79.33	1.8995
06:47:30	148.93	2166.69	31.2083	1.4943	-78.87	1.8969
06:48:00	149.08	2166.83	31.2167	1.4944	-78.73	1.8961
06:50:00	149.08	2165.93	31.2500	1.4949	-79.63	1.9011
06:54:00	149.08	2166.21	31.3167	1.4958	-79.35	1.8996
06:56:00	148.93	2165.71	31.3500	1.4962	-79.85	1.9023
06:57:00	148.93	2165.60	31.3667	1.4965	-79.96	1.9028
06:58:00	149.08	2166.05	31.3833	1.4967	-79.51	1.9004
06:59:00	149.08	2165.85	31.4000	1.4969	-79.71	1.9015
07:00:00	149.08	2166.31	31.4167	1.4972	-79.25	1.8990
07:02:00	149.08	2165.98	31.4500	1.4976	-79.58	1.9008
07:03:00	148.93	2165.57	31.4667	1.4979	-79.99	1.9030
07:05:00	149.08	2166.26	31.5000	1.4983	-79.30	1.8993
07:05:30	148.93	2166.62	31.5083	1.4984	-78.94	1.8973
07:06:00	149.08	2168.01	31.5167	1.4985	-77.55	1.8896
07:07:00	149.08	2172.25	31.5333	1.4988	-73.31	1.8652
07:08:00	149.08	2177.66	31.5500	1.4990	-67.90	1.8319
07:10:00	149.08	2191.33	31.5833	1.4995	-54.23	1.7342
07:12:00	148.93	2203.68	31.6167	1.4999	-41.88	1.6220
07:12:30	148.93	2205.08	31.6250	1.5000	-40.48	1.6073
07:13:30	149.08	2211.21	31.6417	1.5003	-34.35	1.5360
07:14:30	149.08	2215.16	31.6583	1.5005	-30.40	1.4828
07:15:00	PRESS. INCREASE DUE TO CLOSURE OF GASLINE.					
07:15:00	BY-PASS SANDTRAP.					
07:15:30	149.08	2219.96	31.6750	1.5007	-25.60	1.4082
07:17:30	148.93	2226.47	31.7083	1.5012	-19.09	1.2807
07:18:00	149.08	2227.22	31.7167	1.5013	-18.34	1.2635
07:18:30	149.08	2214.30	31.7250	1.5014	-31.26	1.4950
07:19:00	149.08	2192.94	31.7333	1.5015	-52.62	1.7212
07:19:30	148.93	2182.78	31.7417	1.5016	-62.78	1.7978
07:20:00	149.08	2177.45	31.7500	1.5017	-68.11	1.8332

16-OCT-84	SDT degF	SDP psia	t-t0 HR	L(t-t0)	P-P0 psia	L(P-P0)
07:20:30	149.08	2173.82	31.7583	1.5019	-71.74	1.8557
07:21:00	149.08	2171.66	31.7667	1.5020	-73.90	1.8686
07:22:00	148.93	2168.47	31.7833	1.5022	-77.09	1.8870
07:22:30	148.93	2168.83	31.7917	1.5023	-76.73	1.8849
07:23:30	148.93	2167.97	31.8083	1.5025	-77.59	1.8898
07:24:00	148.93	2167.14	31.8167	1.5027	-78.42	1.8944
07:24:30	148.93	2166.81	31.8250	1.5028	-78.75	1.8962
07:25:30	148.93	2165.22	31.8417	1.5030	-80.34	1.9049
07:27:30	148.93	2163.57	31.8750	1.5035	-81.99	1.9138
07:28:30	149.08	2162.13	31.8917	1.5037	-83.43	1.9213
07:29:30	148.93	2162.26	31.9083	1.5039	-83.30	1.9207
07:30:00	148.93	2161.96	31.9167	1.5040	-83.60	1.9222
07:30:30	148.93	2163.21	31.9250	1.5041	-82.35	1.9157
07:31:30	149.08	2163.77	31.9417	1.5044	-81.79	1.9127
07:32:00	148.93	2164.00	31.9500	1.5045	-81.56	1.9115
07:32:30	148.93	2163.07	31.9583	1.5046	-82.49	1.9164
07:33:30	149.08	2162.12	31.9750	1.5048	-83.44	1.9214
07:34:00	149.08	2161.70	31.9833	1.5049	-83.86	1.9235
07:34:30	149.08	2162.08	31.9917	1.5050	-83.48	1.9216
07:35:00	148.93	2162.93	32.0000	1.5051	-82.63	1.9171
07:35:30	149.08	2164.60	32.0083	1.5053	-80.96	1.9083
07:36:00	149.08	2160.75	32.0167	1.5054	-84.81	1.9284
07:36:30	149.08	2157.78	32.0250	1.5055	-87.78	1.9434
07:37:30	149.08	2160.63	32.0417	1.5057	-84.93	1.9290
07:38:00	149.08	2157.71	32.0500	1.5058	-87.85	1.9437
07:38:30	149.08	2156.23	32.0583	1.5059	-89.33	1.9510
07:39:00	149.08	2159.53	32.0667	1.5061	-86.03	1.9347
07:39:30	149.08	2162.07	32.0750	1.5062	-83.49	1.9217
07:40:00	148.93	2161.69	32.0833	1.5063	-83.88	1.9236
07:40:30	148.93	2156.92	32.0917	1.5064	-88.64	1.9476
07:41:00	149.08	2157.49	32.1000	1.5065	-88.07	1.9448
07:41:30	149.08	2157.54	32.1083	1.5066	-88.02	1.9446
07:42:30	149.08	2162.12	32.1250	1.5068	-83.44	1.9214
07:43:30	149.08	2160.63	32.1417	1.5071	-84.93	1.9290
07:44:30	149.08	2161.72	32.1583	1.5073	-83.84	1.9235
07:45:30	149.08	2160.74	32.1750	1.5075	-84.82	1.9285
07:47:30	149.08	2160.55	32.2083	1.5080	-85.01	1.9295
07:48:30	149.08	2160.75	32.2250	1.5082	-84.81	1.9284
07:49:00	149.08	2160.96	32.2333	1.5083	-84.60	1.9274
07:50:00	149.08	2160.41	32.2500	1.5085	-85.15	1.9302
07:50:30	149.08	2160.30	32.2583	1.5086	-85.26	1.9307
07:51:30	149.08	2161.12	32.2750	1.5089	-84.44	1.9266
07:52:30	149.08	2161.46	32.2917	1.5091	-84.10	1.9248
07:54:30	149.08	2160.70	32.3250	1.5095	-84.86	1.9287
07:55:30	149.08	2160.56	32.3417	1.5098	-85.00	1.9294
07:56:00	149.08	2161.03	32.3500	1.5099	-84.53	1.9270
07:57:00	149.08	2160.89	32.3667	1.5101	-84.67	1.9277
07:57:30	149.08	2160.32	32.3750	1.5102	-85.24	1.9306
07:58:30	149.08	2160.18	32.3917	1.5104	-85.38	1.9313
07:59:00	149.08	2160.46	32.4000	1.5105	-85.10	1.9299
08:00:00	149.08	2160.20	32.4167	1.5108	-85.36	1.9313
08:01:00	149.08	2160.67	32.4333	1.5110	-84.89	1.9289
08:02:00	149.08	2160.61	32.4500	1.5112	-84.95	1.9291
08:03:00	149.08	2161.06	32.4667	1.5114	-84.50	1.9268
08:05:00	148.93	2160.79	32.5000	1.5119	-84.77	1.9283
08:06:00	149.08	2160.53	32.5167	1.5121	-85.03	1.9296
08:06:30	149.08	2160.20	32.5250	1.5122	-85.36	1.9313
08:07:30	149.08	2160.53	32.5417	1.5124	-85.03	1.9296
08:08:30	149.22	2160.27	32.5583	1.5127	-85.29	1.9309
08:12:30	149.08	2160.55	32.6250	1.5136	-85.01	1.9295
08:13:00	149.08	2160.93	32.6333	1.5137	-84.63	1.9275
08:14:00	149.08	2160.18	32.6500	1.5139	-85.38	1.9313

16-OCT-84	SDT degF	SDP psia	t-t0 HR	L(t-t0)	P-P0 psia	L(P-P0)
08:16:00	149.22	2160.65	32.6833	1.5143	-84.91	1.9290
08:18:00	149.08	2160.24	32.7167	1.5148	-85.32	1.9311
08:19:00	149.08	2160.72	32.7333	1.5150	-84.84	1.9286
08:19:30	148.93	2160.67	32.7417	1.5151	-84.89	1.9289
08:20:00	149.08	2160.20	32.7500	1.5152	-85.36	1.9313
08:21:00	149.08	2160.87	32.7667	1.5154	-84.69	1.9278
08:21:30	149.08	2160.93	32.7750	1.5155	-84.63	1.9275
08:22:00	149.08	2158.13	32.7833	1.5157	-87.43	1.9417
08:22:30	149.08	2159.37	32.7917	1.5158	-86.19	1.9354
08:23:00	SWITCH FLOW THROUGH SANDTRAP.					
08:23:00	149.08	2159.84	32.8000	1.5159	-85.72	1.9331
08:23:30	149.08	2162.03	32.8083	1.5160	-83.53	1.9218
08:24:30	149.08	2169.26	32.8250	1.5162	-76.30	1.8825
08:25:00	149.08	2173.75	32.8333	1.5163	-71.81	1.8562
08:26:00	149.08	2181.23	32.8500	1.5165	-64.33	1.8084
08:26:30	149.08	2184.96	32.8583	1.5166	-60.60	1.7825
08:27:00	149.08	2189.64	32.8667	1.5168	-55.92	1.7476
08:28:00	149.08	2197.38	32.8833	1.5170	-48.18	1.6829
08:28:30	149.08	2201.07	32.8917	1.5171	-44.49	1.6482
08:29:30	149.08	2206.67	32.9083	1.5173	-38.89	1.5899

[257] T0=18-OCT-84 08:30:00 P0=2159.84 FT=032:55:00 FT = REAL FLOWING TIME

08:30:00 WELL SHUT IN AT PCT-VALVE.
 08:30:00 FOR P0 2159.84 PSIA IS USED SINCE THIS
 08:30:00 WAS THE LAST REPRESENTATIVE STABIL FLOW PRESSURE.

16-OCT-84	SDT degF	SDP psia	t-t0 HR	L(t-t0)	P-P0 psia	L(P-P0)	L(Horn)
08:30:30	149.08	2223.04	0.0083	-2.0792	63.20	1.8007	3.5967
08:31:00	149.08	2228.75	0.0167	-1.7782	68.91	1.8383	3.2958
08:31:30	149.08	2231.29	0.0250	-1.6021	71.45	1.8540	3.1198
08:32:00	SHUT IN SANDTRAP.						
08:32:30	149.08	2234.32	0.0417	-1.3802	74.48	1.8720	2.8982
08:33:30	149.08	2236.21	0.0583	-1.2341	76.37	1.8829	2.7523
08:34:30	149.08	2237.56	0.0750	-1.1249	77.72	1.8905	2.6433
08:35:30	149.08	2238.22	0.0917	-1.0378	78.38	1.8942	2.5564
08:37:30	149.08	2240.14	0.1250	-0.9031	80.30	1.9047	2.4222
08:41:30	149.08	2242.52	0.1917	-0.7175	82.68	1.9174	2.2374
08:49:30	149.08	2245.37	0.3250	-0.4881	85.53	1.9321	2.0098
08:57:30	149.22	2247.18	0.4583	-0.3388	87.34	1.9412	1.8622
09:13:30	149.08	2249.34	0.7250	-0.1397	89.50	1.9518	1.6665
09:45:30	148.33	2251.60	1.2583	0.0998	91.76	1.9627	1.4339
10:49:30	147.14	2253.76	2.3250	0.3664	93.92	1.9728	1.1806
12:57:30	145.35	2255.72	4.4583	0.6492	95.88	1.9817	0.9234
15:05:30	144.16	2256.80	6.5917	0.8190	96.96	1.9866	0.7777
19:21:30	142.82	2257.95	10.8583	1.0358	98.11	1.9917	0.6055
21:29:30	142.37	2258.38	12.9917	1.1137	98.54	1.9936	0.5482
21:31:30	142.37	2258.42	13.0250	1.1148	98.58	1.9938	0.5474
21:32:00	OPEN PCT-VALVE.						
21:32:00	142.37	2262.18	13.0333	1.1151	102.34	2.0101	0.5472

[259] START TIME:18-OCT-84 21:32:30

18-OCT-84	SDT degF	SDP psia
21:34:30	142.37	2259.14
21:35:00	142.22	2259.08
21:35:30	142.22	2252.38
21:36:00	142.37	2257.97
21:37:00	142.22	2258.44

18-OCT-84	SDT degF	SDP psia
21:53:00	141.32	2258.31
21:57:00	141.17	2258.21
22:01:00	141.17	2258.62
22:33:00	141.03	2257.78
22:41:00	140.88	2257.57
22:42:00	140.88	2257.38
22:42:30	140.88	2252.82
22:43:00	140.88	2255.86
22:44:00	140.88	2256.69
22:52:00	140.88	2257.21
23:24:00	140.88	2257.05
23:40:00	140.88	2256.90
23:48:00	140.73	2256.71
23:52:00	140.58	2256.62
23:53:00	140.73	2256.66
23:53:30	140.73	2234.55
23:54:00	140.73	2252.93
23:54:30	140.58	2254.29
23:55:30	140.73	2255.03
00:03:30	140.73	2255.65
00:11:30	140.58	2255.55
00:19:30	140.58	2255.00
00:51:30	140.58	2255.21
00:59:30	140.58	2255.14
01:01:30	140.58	2255.09
01:02:30	140.73	2255.10
01:03:00	140.73	2253.32
01:03:30	140.58	2254.12
01:04:00	140.58	2254.52
01:20:00	140.73	2254.26
01:21:00	140.73	2254.60
01:21:30	140.73	2254.01
01:22:00	140.73	2254.38
01:22:30	140.88	2254.18
01:23:00	140.88	2254.56
01:23:30	140.88	2254.05
01:24:00	140.88	2254.60
01:24:30	140.88	2253.96
01:25:00	140.73	2254.62
01:26:00	140.88	2254.10
01:26:30	140.88	2254.65
01:27:00	140.73	2254.19
01:27:30	140.88	2254.60
01:28:00	140.88	2253.93
01:30:00	140.88	2254.27
01:46:00	140.88	2254.15
01:50:00	140.88	2253.86
01:51:00	140.88	2254.03
01:51:30	140.73	2253.62
06:07:30	141.17	2254.03
10:23:30	140.73	2254.48
14:39:30	140.58	2254.91
18:55:30	141.03	2255.32
23:11:30	141.03	2255.53
01:19:30	140.58	2255.71
01:51:30	140.58	2255.97
01:55:30	140.58	2255.97
01:57:30	140.58	2255.97
01:58:00	140.58	2255.38
02:06:00	140.43	2255.76
02:08:00	140.58	2255.93
02:08:30	140.58	2255.67

20-OCT-84	SDT degF	SDP psia
02:09:00	140.43	2256.04
02:11:00	140.43	2255.74
02:12:00	140.58	2256.12
02:28:00	140.43	2255.83
02:36:00	140.43	2255.90
02:40:00	140.28	2255.97
02:40:30	140.43	2256.00
02:41:00	140.28	2256.51
02:41:30	140.43	2257.61
02:42:30	140.28	2256.77
02:46:30	140.13	2256.66
02:47:30	139.98	2256.60
02:48:00	139.98	2256.60
02:48:30	139.98	2251.50
02:49:00	139.83	2255.30
02:50:00	139.98	2256.04
02:58:00	140.13	2256.61
03:02:00	140.28	2256.68
03:18:00	140.88	2255.27
03:26:00	140.88	2254.81
03:30:00	140.88	2254.56
03:38:00	140.73	2255.22
04:10:00	140.43	2255.24
04:18:00	140.43	2255.28
04:20:00	140.28	2255.23
04:21:00	140.28	2255.25
04:21:30	140.28	2243.36
04:22:00	140.28	2253.67
04:22:30	140.28	2254.52
04:24:00	R. I. H. TO RETRIEVE GAUGES.	
04:24:30	140.28	2255.18
04:40:00	AT DEPTH, LATCHED ON, P.O.O.H.	
04:40:30	140.28	2255.42
04:44:30	140.28	2255.28
04:46:30	140.28	2255.18
04:47:00	140.28	2255.16
04:47:30	140.28	2249.41
04:48:00	140.28	2244.52
04:48:30	140.28	2243.36
04:49:00	140.13	2238.60
04:50:00	139.09	2194.49
04:50:30	138.49	2176.56
04:51:00	STOP AT 1492 mRKB FOR 1st. GRADIENT STOP.	
04:51:00	137.89	2174.71
04:52:00	136.55	2173.35
04:53:00	135.50	2172.82
04:55:00	133.56	2173.07
04:59:00	131.02	2174.75
05:03:00	129.97	2175.81
05:05:00	129.53	2176.05
05:05:30	129.38	2175.95
05:06:00	P. O. O. H.	
05:06:00	129.38	2164.20
05:06:30	129.38	2150.62
05:07:00	129.38	2139.13
05:07:30	129.38	2129.14
05:08:30	129.23	2106.82
05:09:00	129.23	2097.28
05:09:30	129.08	2092.90
05:10:00	STOP AT 1442 mRKB FOR 2nd. GRADIENT STOP.	
05:17:30	128.63	2092.93
05:21:30	128.63	2093.07

20-OCT-84	SDT degF	SDP psia
05:23:30	128.63	2093.09
05:24:30	128.63	2093.04
05:25:00	P.O.O.H.	
05:25:00	128.63	2090.59
05:26:00	128.63	2064.31
05:27:00	128.63	2036.48
05:27:30	128.48	2032.93
05:28:00	STOP AT 1392 mRKB FOR 3rd. GRADIENT STOP.	
05:35:30	127.88	2032.71
05:39:30	127.73	2032.84
05:41:30	127.58	2032.79
05:42:30	127.58	2032.86
05:43:00	P.O.O.H.	
05:43:00	127.58	2028.86
05:43:30	127.58	2001.72
05:44:00	127.43	1971.64
05:44:30	127.43	1939.83
05:45:00	127.13	1906.21
05:45:30	126.98	1872.01
05:46:00	126.53	1835.78
05:47:00	125.49	1762.00
05:47:30	124.74	1725.23
05:48:00	123.99	1687.79
05:49:00	122.04	1611.10
05:50:00	119.65	1533.80
05:51:00	117.10	1455.72
05:51:30	115.60	1415.48
05:52:30	112.60	1336.36
05:53:30	109.30	1256.03
05:54:30	105.85	1174.83
05:55:00	104.04	1134.12
05:57:00	96.53	968.00
05:59:00	88.24	797.61
05:59:30	85.38	753.89
06:00:00	82.52	708.72
06:00:30	79.80	664.71
06:01:00	77.38	619.92
06:02:00	72.70	528.98
06:02:30	70.74	483.71
06:03:30	67.26	396.00
06:04:00	65.59	369.56
06:04:30	64.08	358.83
06:05:00	STOP 1m ABOVE RKB FOR LAST GRADIENT STOP.	
06:05:00	63.02	358.21
06:06:00	61.20	361.14
06:06:30	60.29	361.80
06:07:00	59.69	362.03
06:07:30	59.08	364.70
06:08:30	58.02	367.19
06:09:30	57.26	368.84
06:10:00	56.96	369.81
06:12:00	56.05	371.93
06:13:00	55.59	372.69
06:17:00	54.68	374.04
06:18:00	54.53	374.27
06:18:30	54.53	374.08
06:20:30	54.38	374.50

TECHNICAL DATA

GAUGE

Type : SDP/TPT
Transducer module : 84223
Recorder module : 84178

OPERATION SET UP

Delay time : 5 MIN.
Scanning rate : 30 SEC.
Averaging : 16
Relative values : USED
Compression algorithm : USED
Compression level : 12

CALIBRATION DATA CHECKS

Before job:

Ambient pressure : 13.7 PSIA
Ambient Temperature : 16.6 °C

After job:

Ambient pressure : 15.45 PSIA
Ambient temperature : 18.2 °C

Date last calibration : 5-SEP-84