

Print: 2 1/2 x 3 1/2 in. Units: M E T
Length: 1 ft. Scale: 27/32"
Top Bottom Scale TD
296 6880 1000 6880

DIGITAL WIRELINE LOSS PACKAGE
1984
This logging run was processed and recorded using software technology from SIMON PETROLEUM TECHNOLOGY

COMPLETION LOG

PROPRIETARY EXPLORESSO
ESSO EXPLORATION NORWAY INC.
COMPLETION LOG
Scale 1:500

Table with columns: Well Name (25/10-1), Status (Plugged and Abandoned), Area (North Sea offshore Norway), Well Classification (Exploration Test), Total Depth (6880' Driller, 6680' Wireline), Deepest Penetration (Lias).

Table with columns: Location (10° 11' 22" N, 14° 19' 11" E), Date Spudded (4 Aug 1969), Elevation of Datum (320 ft. HRSS), Water Depth (407 ft.), etc.

NOTE: Hole was temp. suspended due to severe water weather on 16th Oct 1969 at a depth of 5733 ft. The hole was re-entered on 9 July 1970 and abandoned on 3 Aug 1970 at depth of 6881 ft.

LOGS RUN table with columns: IN-ECS, BUC DOWN - CR, MEAS. M., Formation Density. Includes 1. 405'-1247', 2. 1247'-3527', etc.

Diameter table with columns: 1. 1248 - 9655, 2. 4487-5731, 3. 5400-6866.

Seismic check sheels
YES

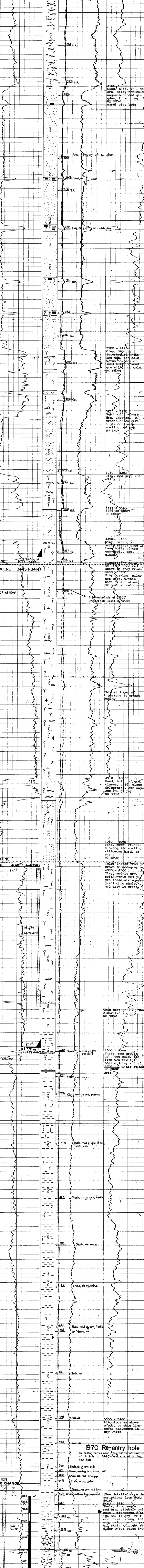
LITHOLOGIC SYMBOLS (PROVISIONALLY APPROVED FOR FIELD TESTING) - Detailed legend for symbols representing various lithologies and well events.

Well Log Data Table with columns: Log No., Well No., Company, etc.

SPONTANEOUS POTENTIAL (SP) table with columns: Depth (ft.), SP (millivolts).

RESISTIVITY table with columns: Depth (ft.), Resistivity (ohms-m).

CONDUCTIVITY table with columns: Depth (ft.), Conductivity (millimhos/m).



1970 Re-entry hole data table with columns: Depth (ft.), Lithology, etc.

SPONTANEOUS POTENTIAL (SP) table for 1970 re-entry hole.

RESISTIVITY table for 1970 re-entry hole.

CONDUCTIVITY table for 1970 re-entry hole.

Geological formation labels: PALEOCENE (5788-5757), Eocene (4080-4069), OLIGOCENE (3445-3414), MIOCENE (1820-1789).

Well Log Data Table (bottom section).

RESULTS table with columns: Test No., Depth (ft.), Summary of test results (e.g., Recovered 11,000 cc water, 2000 cc mud).

Essential notes and additional data at the bottom of the log, including well failure details and sample locations.

SCHLUMBERGER INDUCTION-ELECTRIC LOG
Log No. 25/10-1
Well No. 25/10-1
Company: ESSO EXPLORATION NORWAY INC.
Field: HILGAT
County: Hordaland