

# 6305/4-1

## HYBRID CURVES

Company	Norsk_Hydro
Well Name	6305/4-1
Field	Ormen Lange
Nation	Norway
State	Norway
County or Rig name	Scarabeo 5
Field Location	More Margin
Field Locn. Line 1	UTME: 614 148.3
Field Locn. Line 2	UTMN: 7 051 501.9
Latitude	063 34' 17.760" N DMS
Longitude	005 17' 55.930" E DMS
Permanent Datum	Mean Sea Level
Elevation of PD	.00 M
Elevation of KB	25.00 M
Elevation of DF	25.00 M
Elevation Ground lv	-1002.00 M
Elevation Log Zero	25.00 M
Above Perm. Datum	25.00 M
Log measured from	DF
Drill measured from	DF
Date plotted	16-08-2002
Time plotted	08:23:22

PETROLOG SOFTWARE Revision 8.00

**CROCKER**

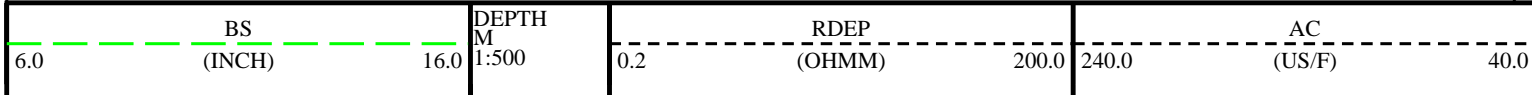
DATA PROCESSING

Run number

Mud Sample Temp

REMARKS

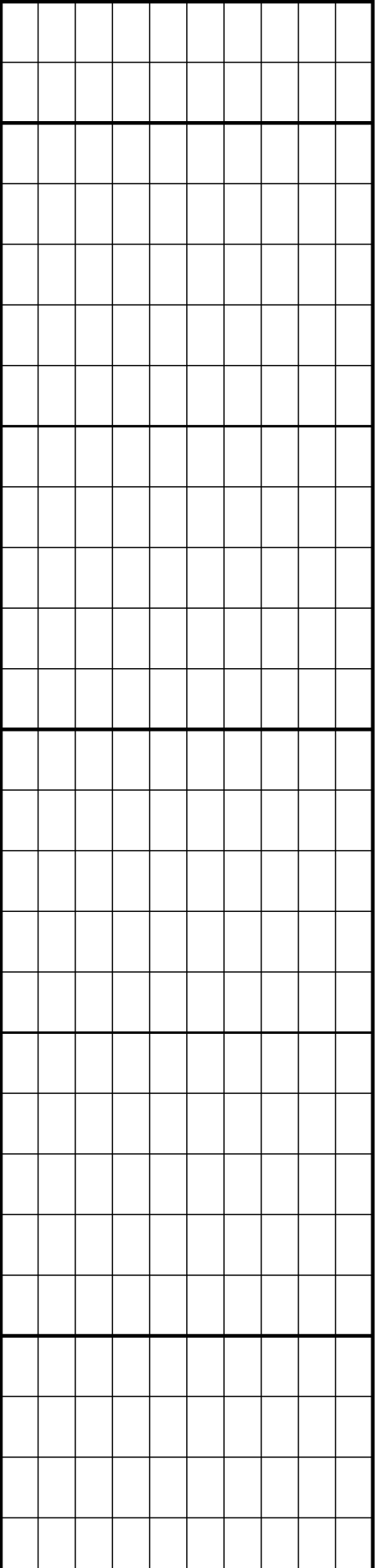
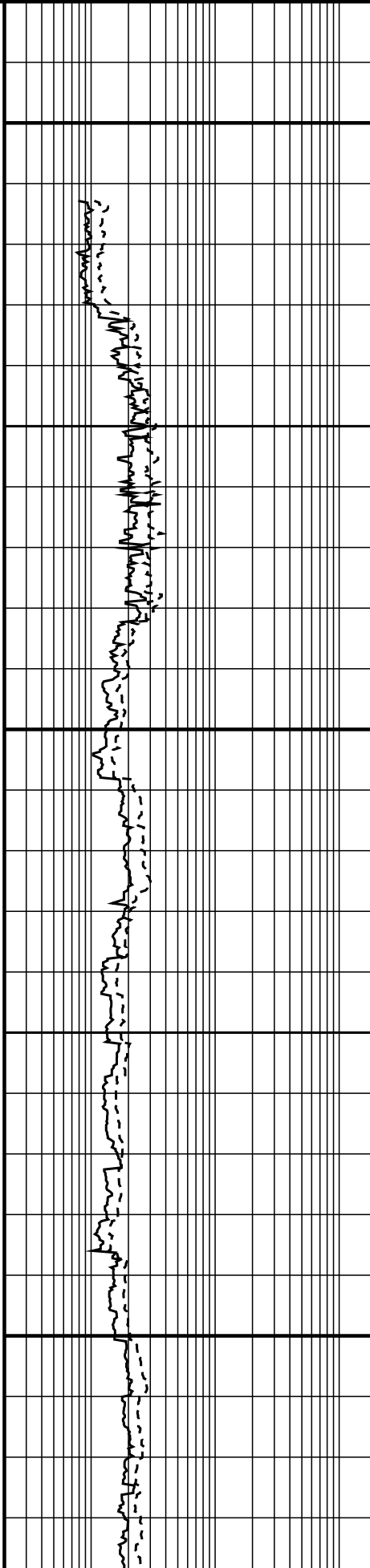
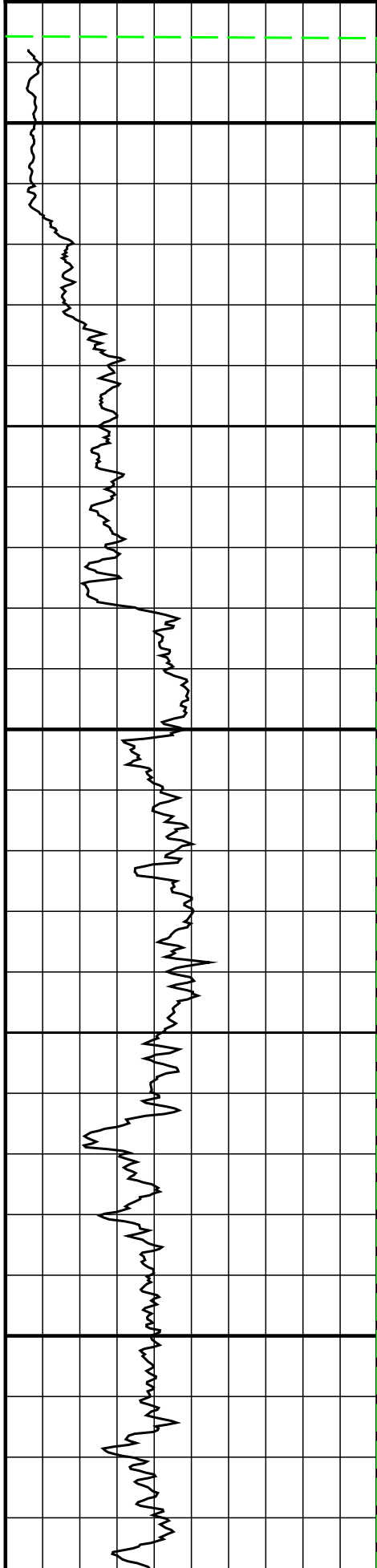
Composite, spliced data including:  
 HALS-MCFL-TLD-CNL-GR, run 1A  
 DSI-IS-GR, run 1A  
 HRLA-MCFL-TLD-CNL-GR, run 2B  
 DSI-GR, run 2B  
 DSI processing results, run 1A and 2B  
 MWD CDR-GR, run 4  
 MWD ARC-RAB-GR, run 9

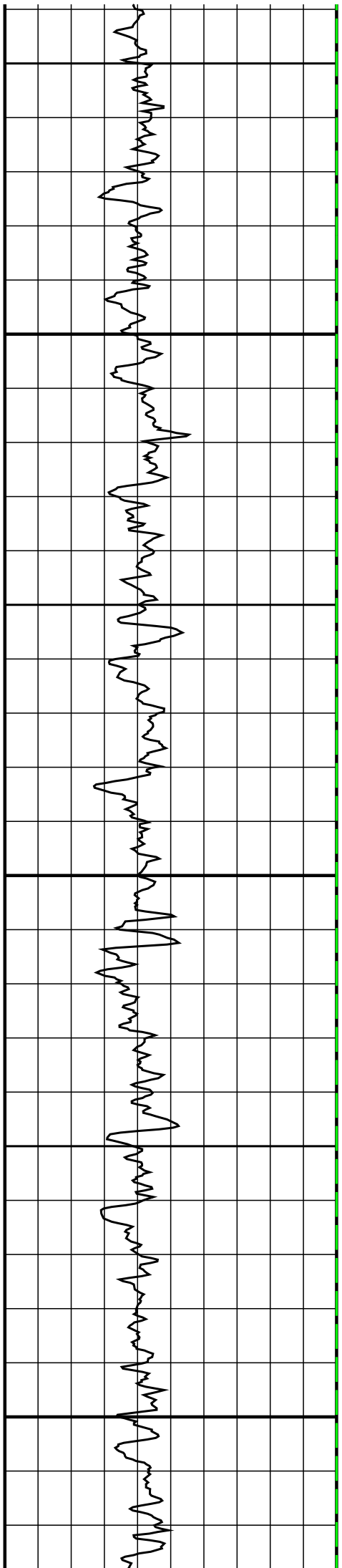


0.0	GR (API)	150.0
6.0	CALI (INCH)	16.0
0.0	SP ( )	150.0

0.2	RMED (OHMM)	200.0
0.2	RMIC (OHMM)	200.0

1.95	DEN (G/CC)	2.95
0.45	NEU (PU)	-0.15

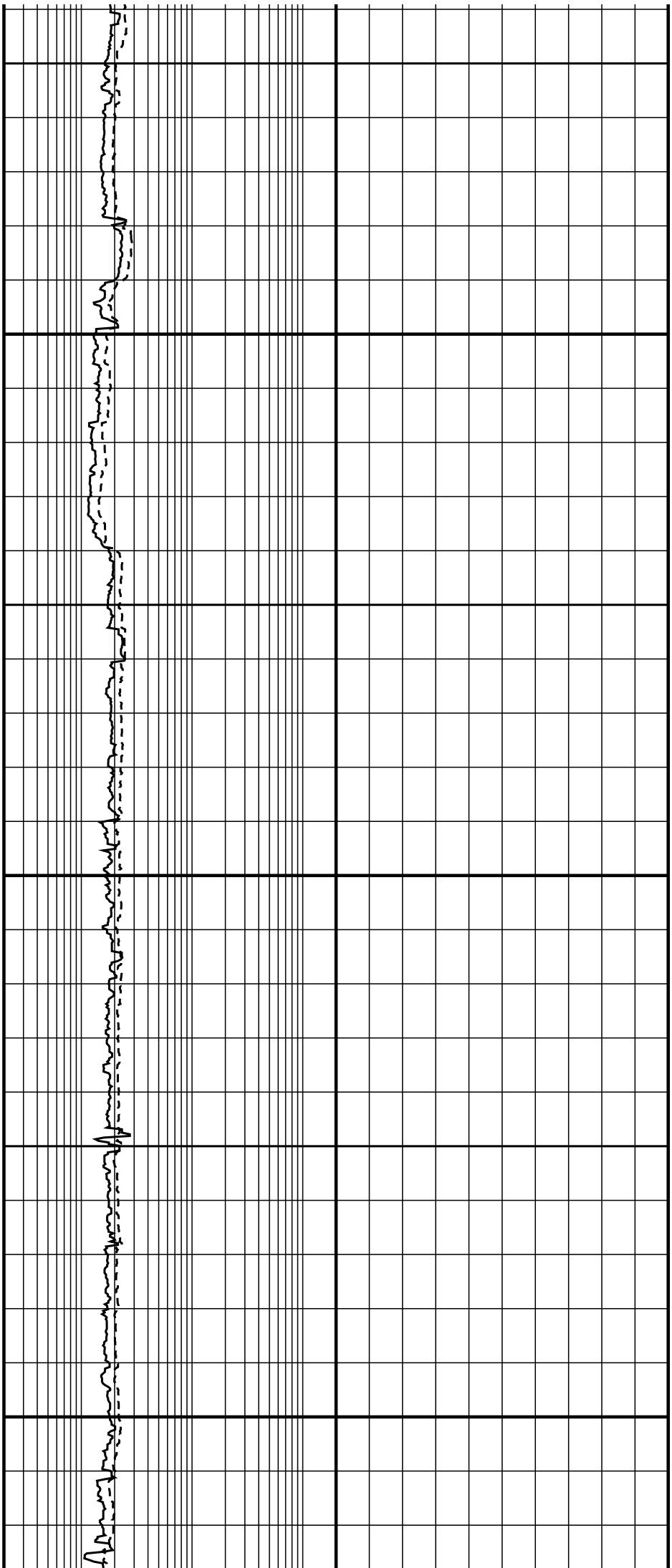


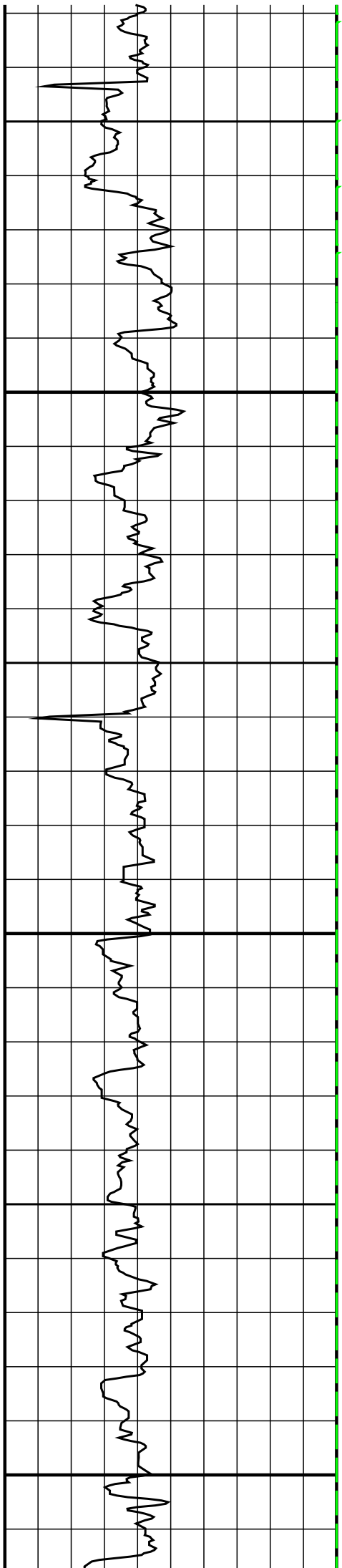


1250

1300

1350

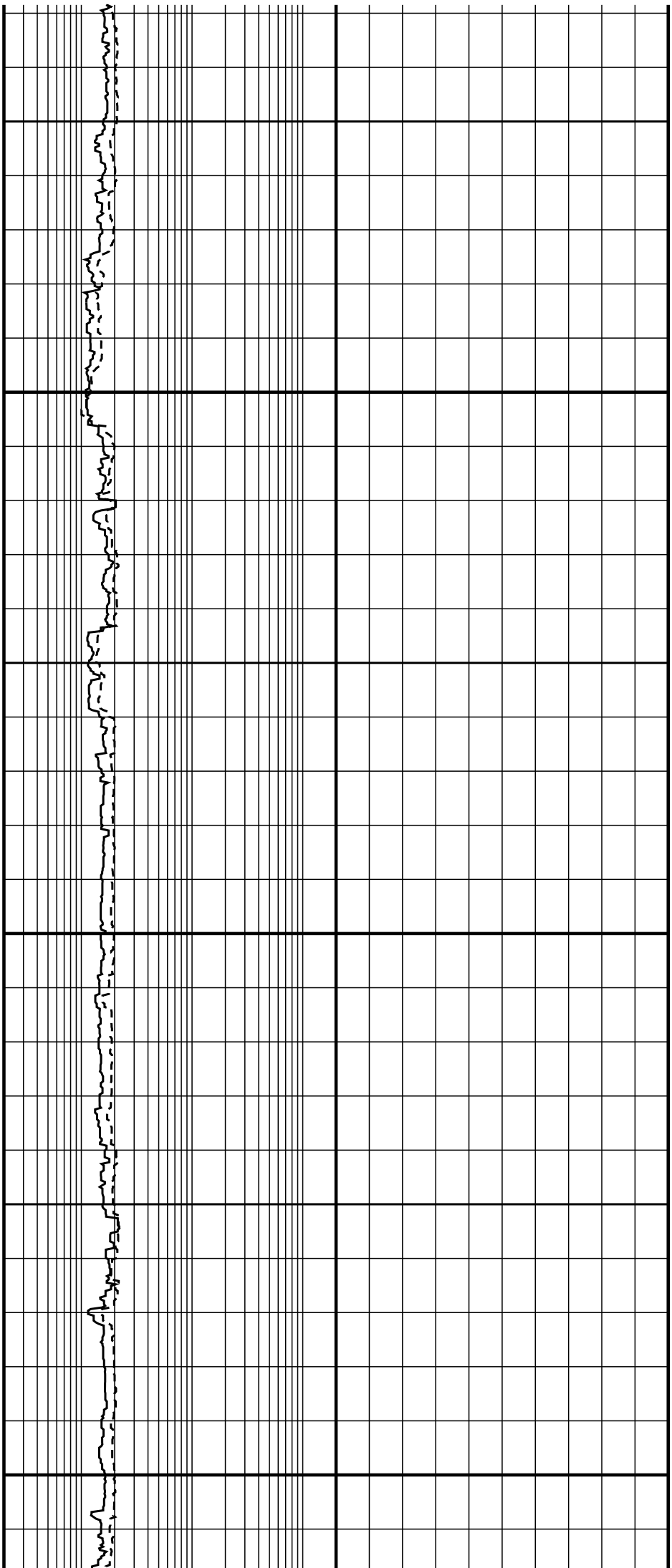


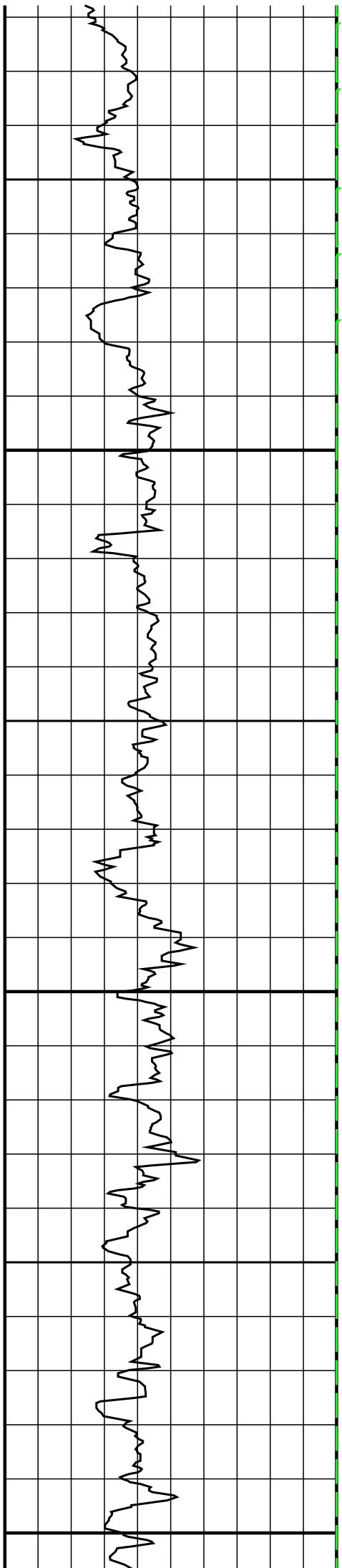


1400

1450

1500

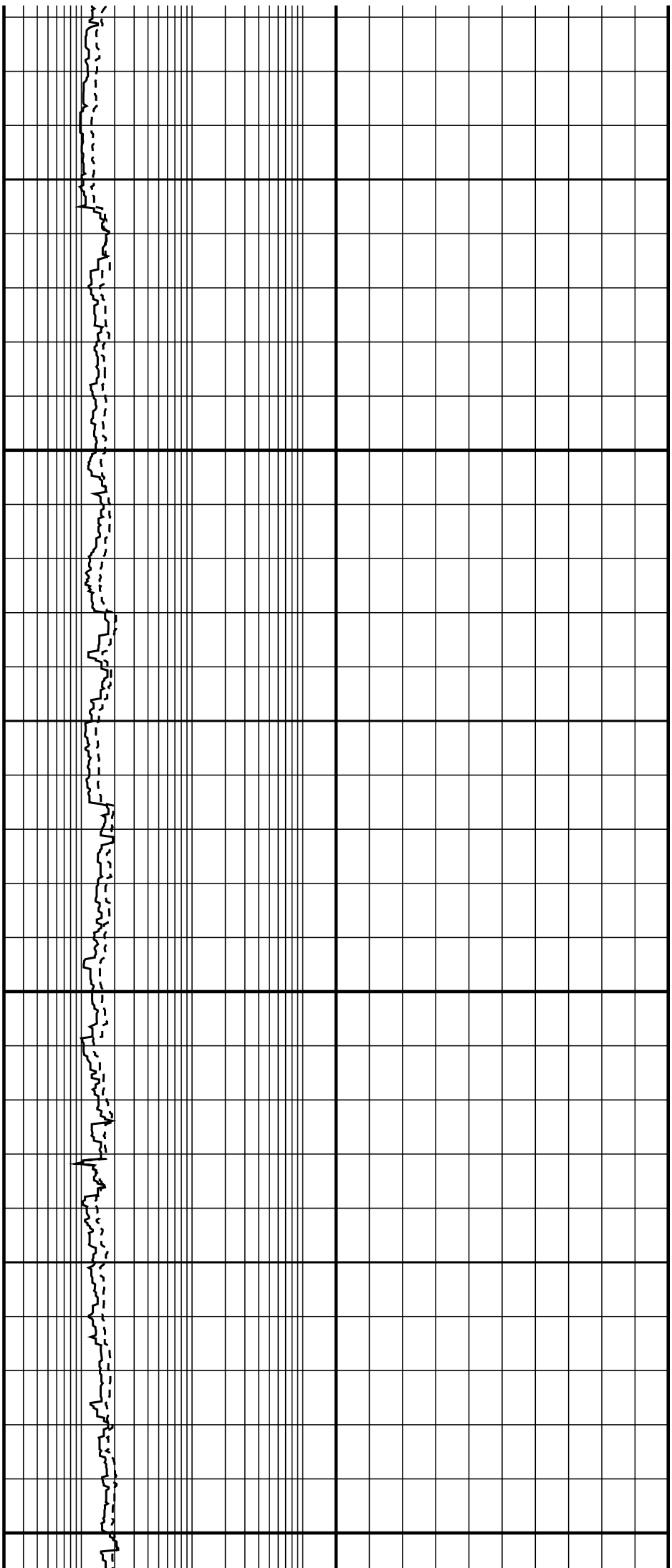


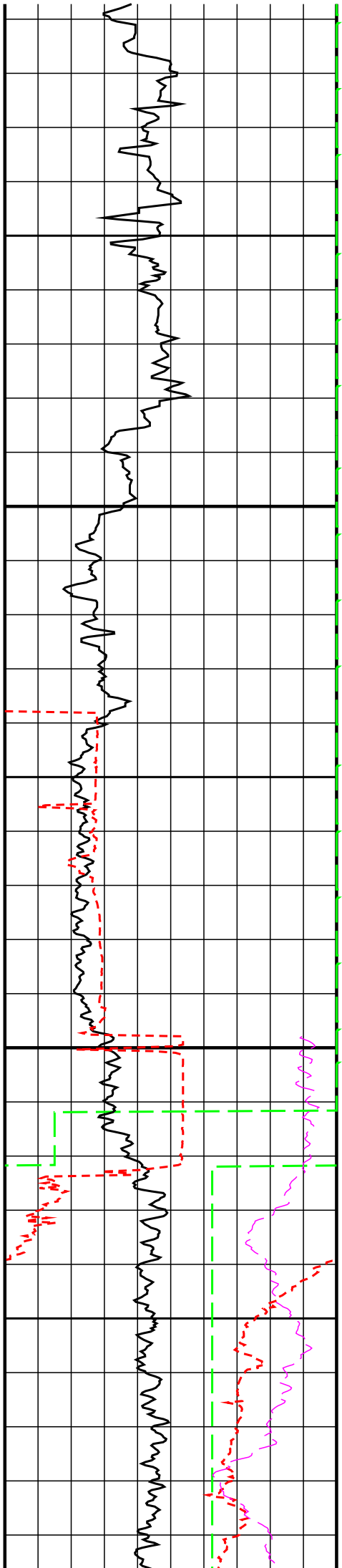


1550

1600

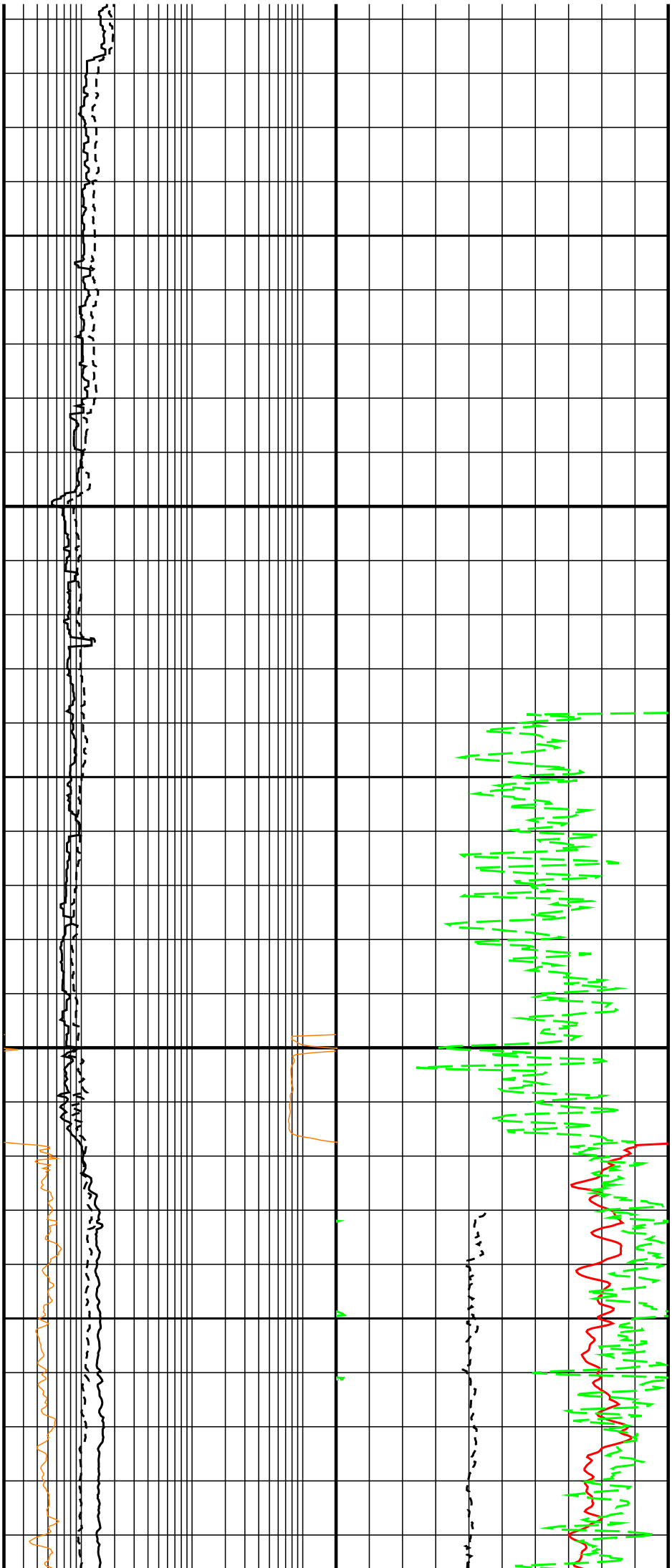
1650

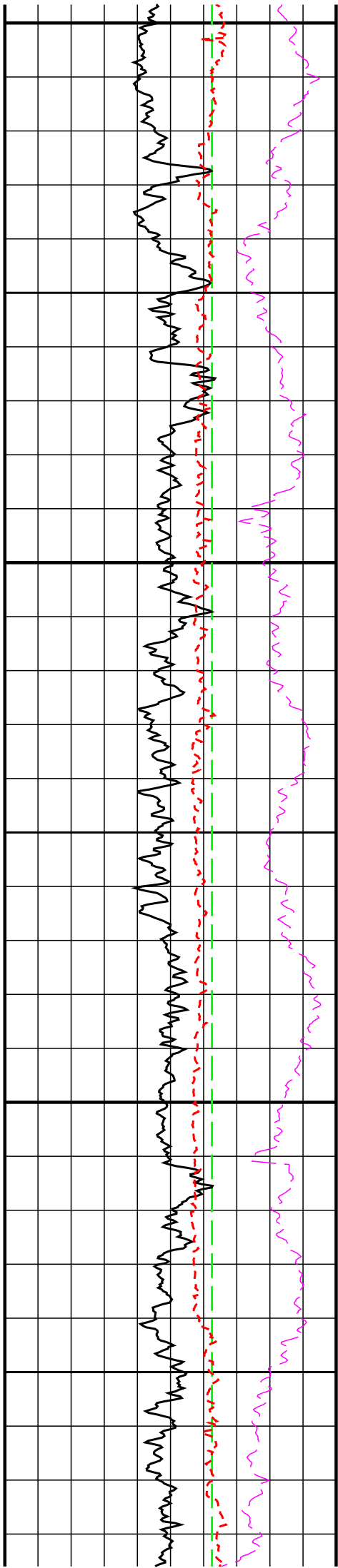




1700

1750

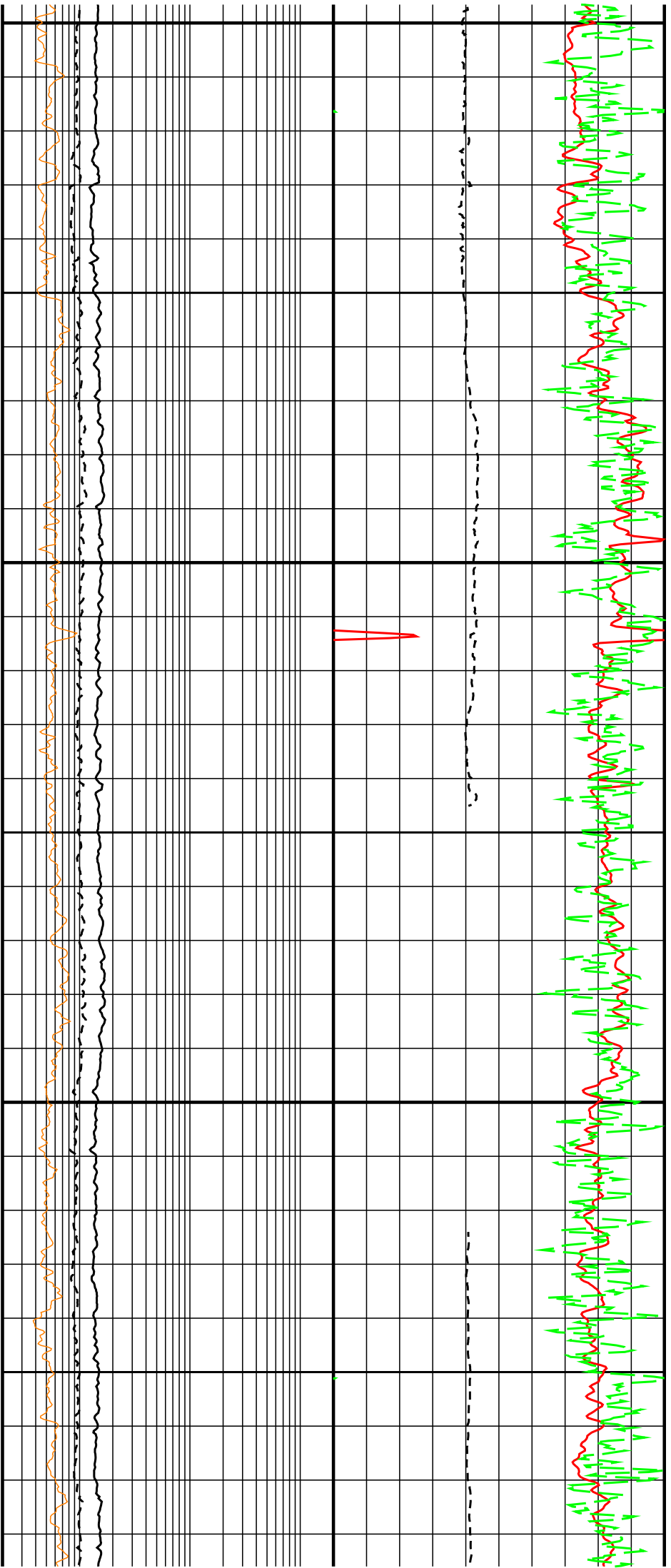




1800

1850

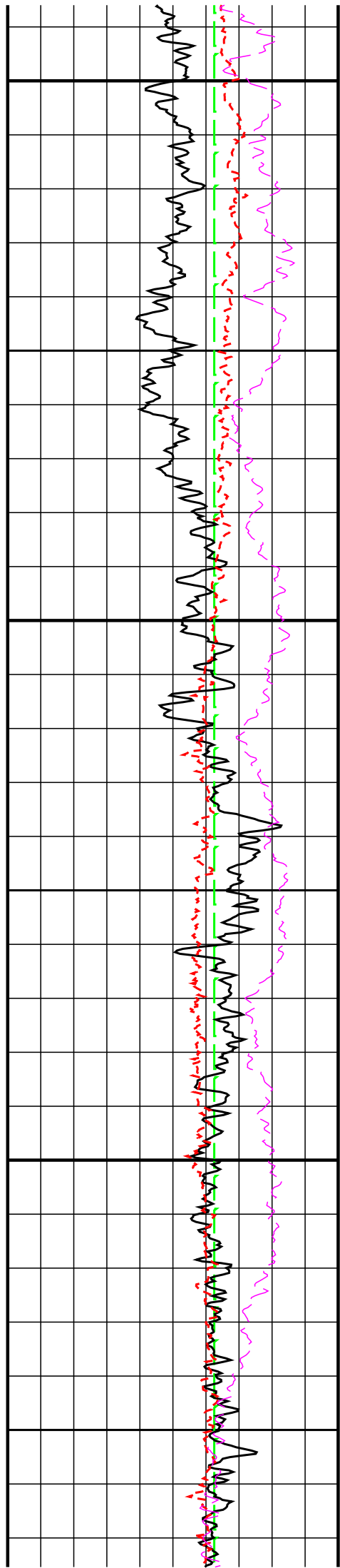
1900



1800

1850

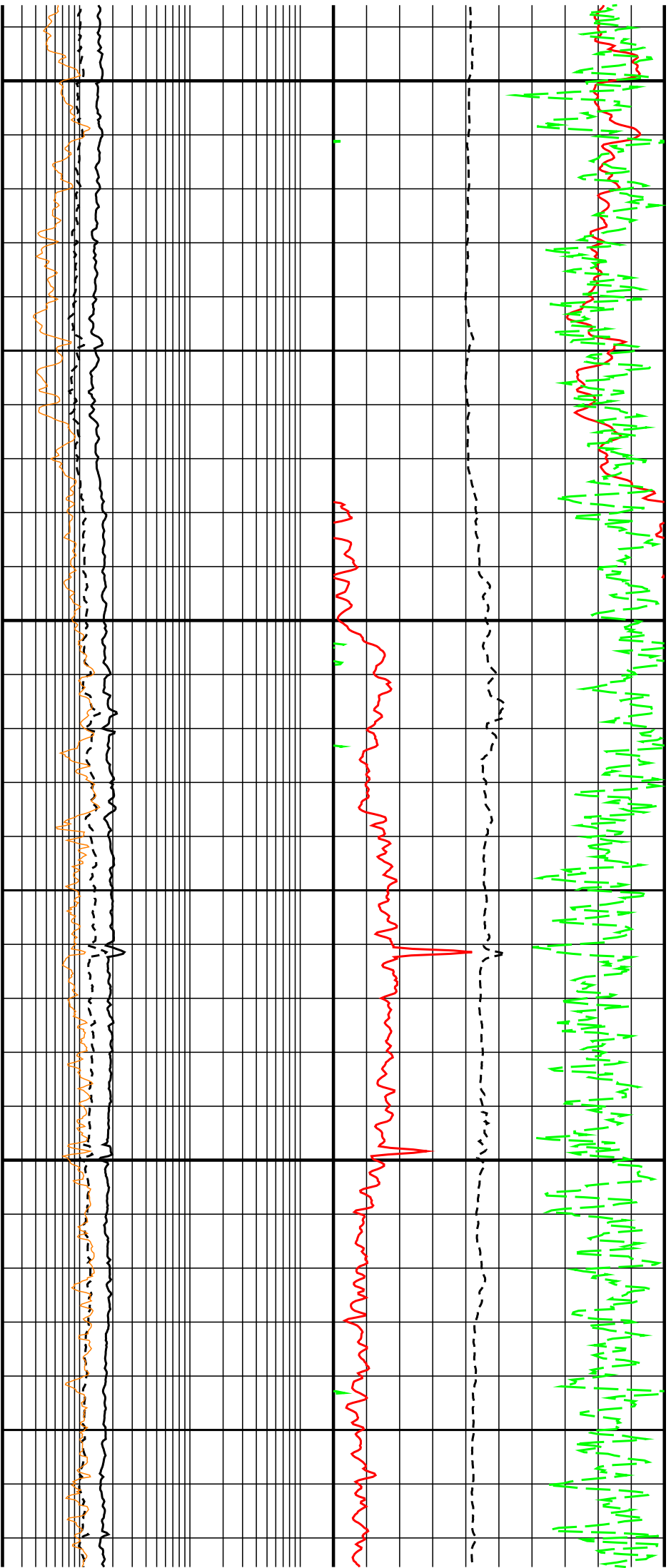
1900



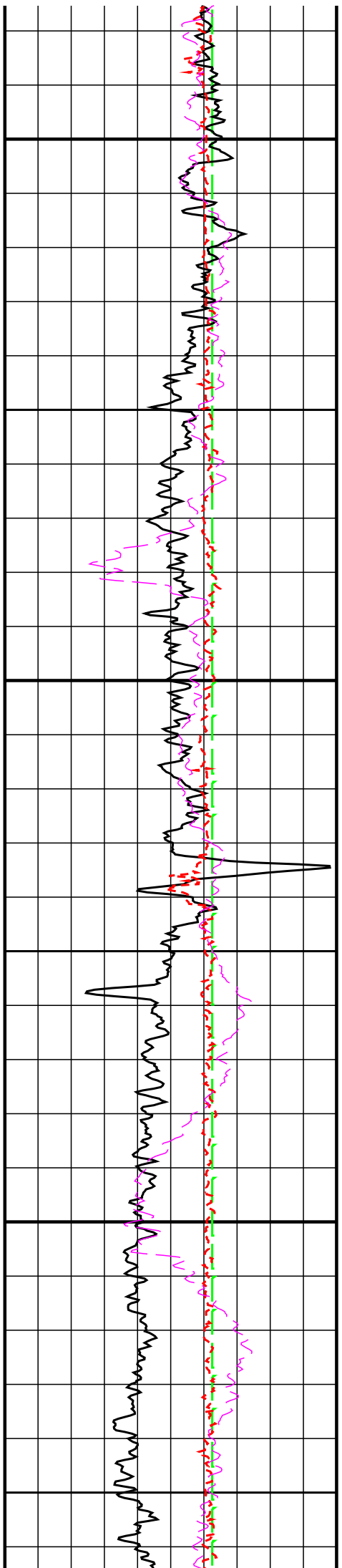
1950

2000

2050



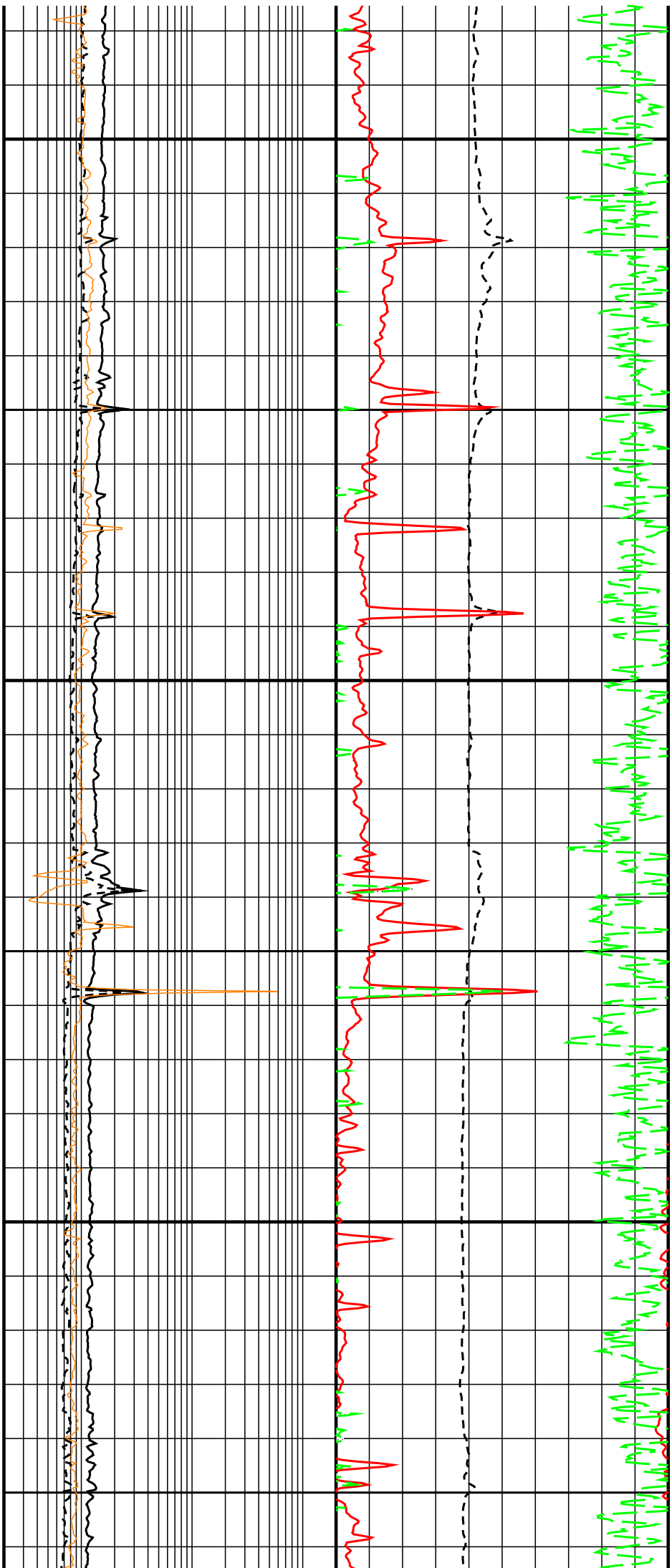




2100

2150

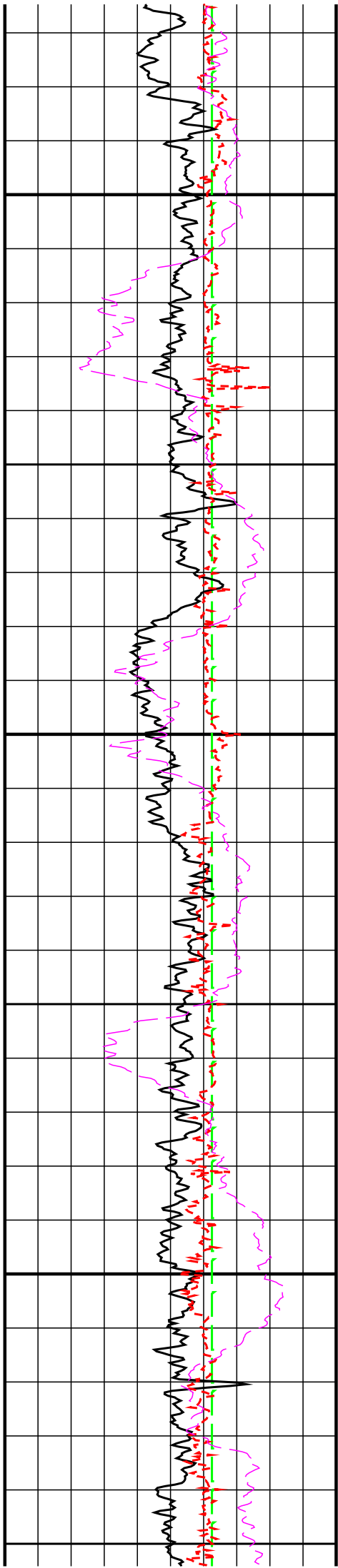
2200



2100

2150

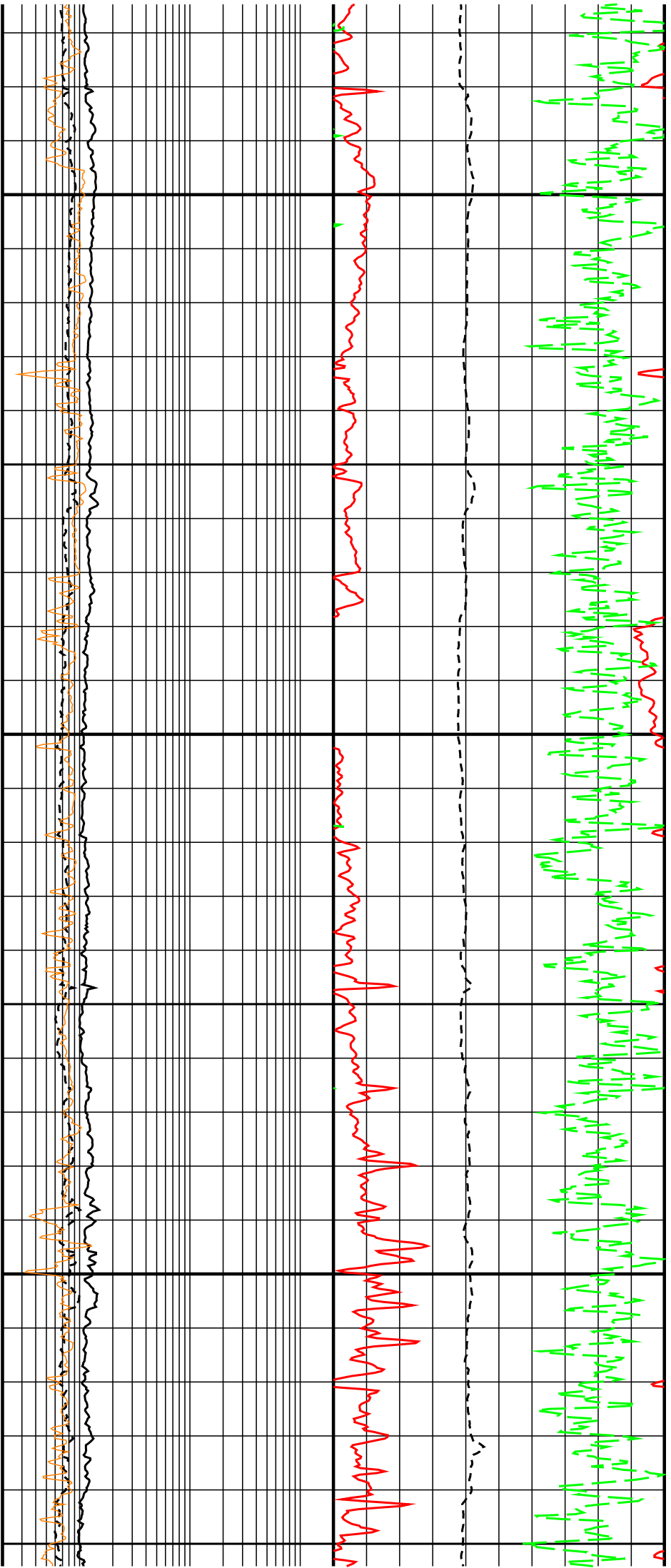
2200

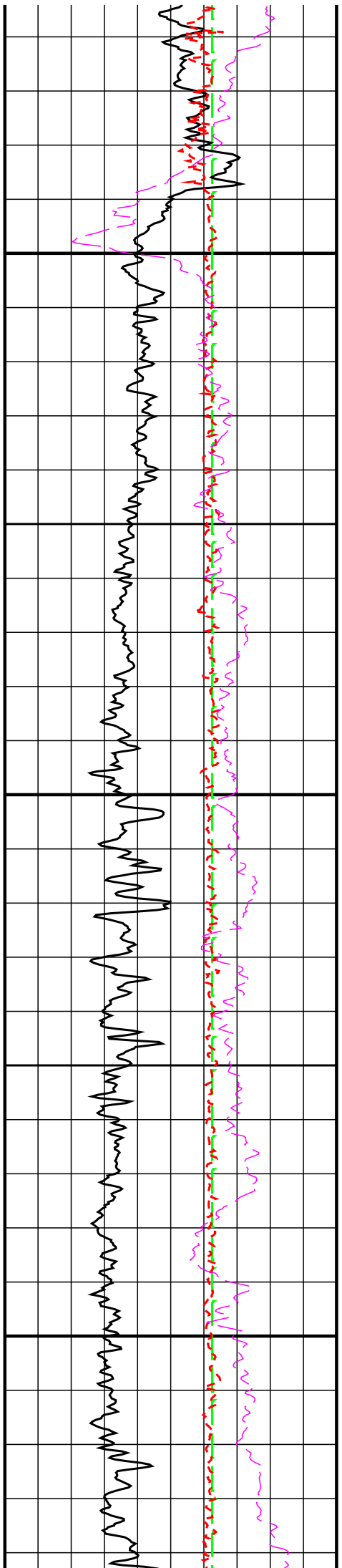


2250

2300

2350

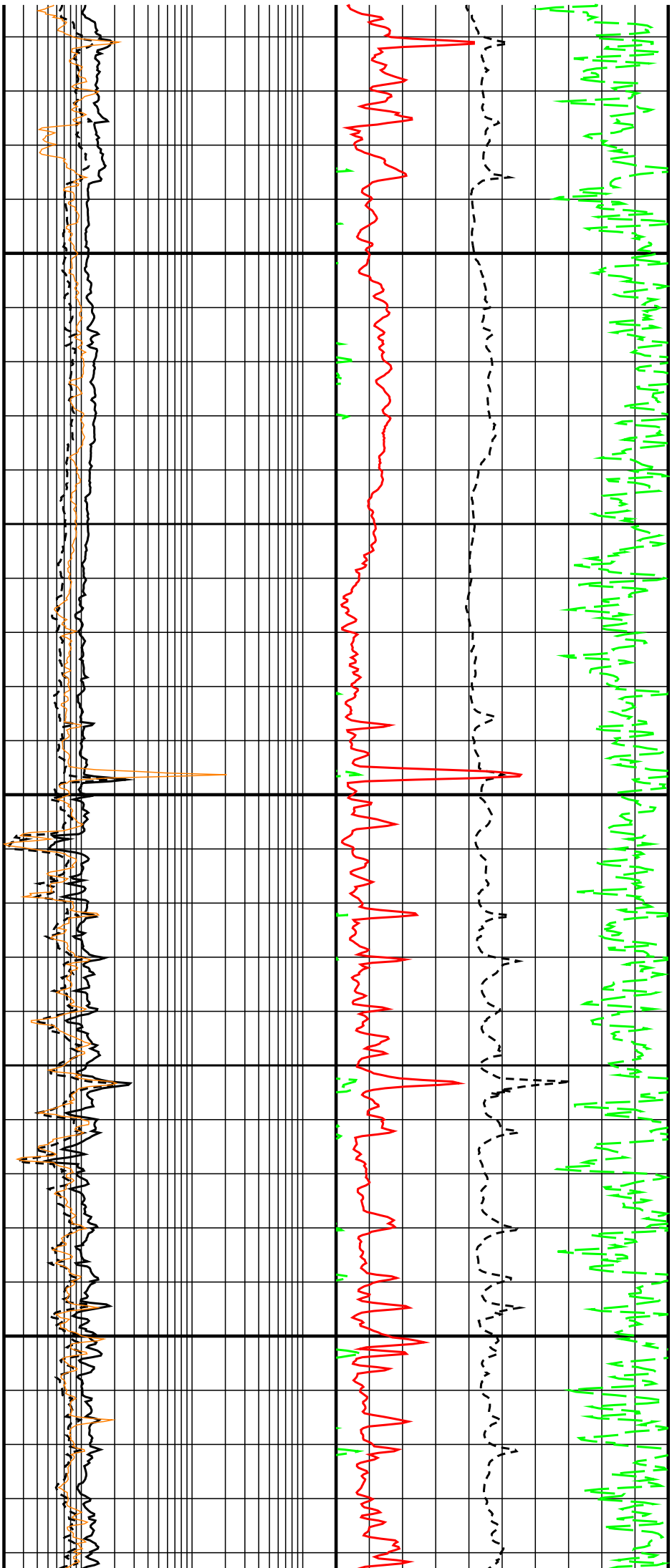




2400

2450

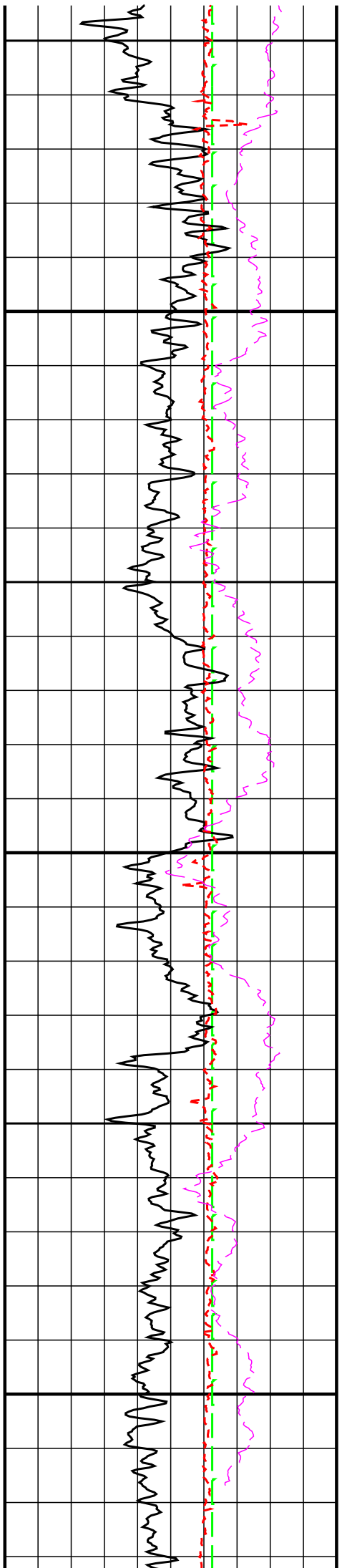
2500



2400

2450

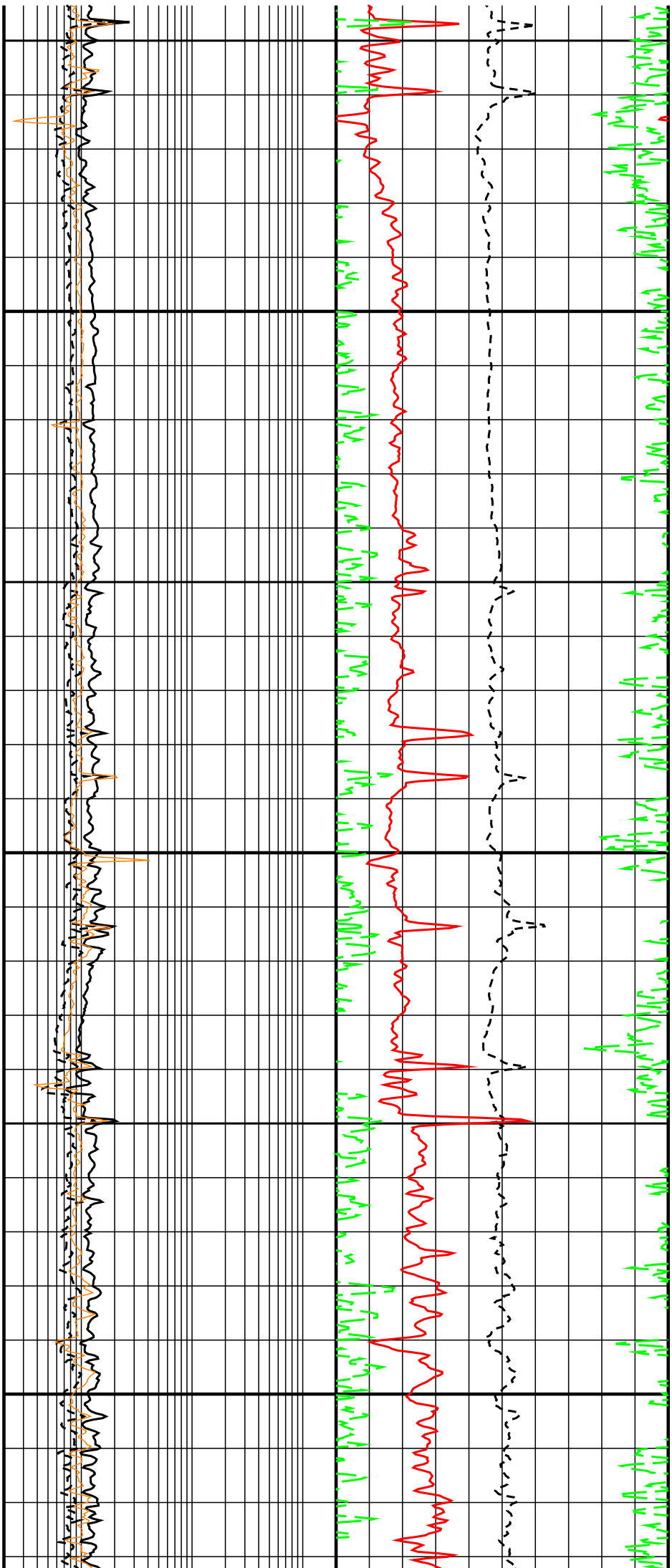
2500



2550

2600

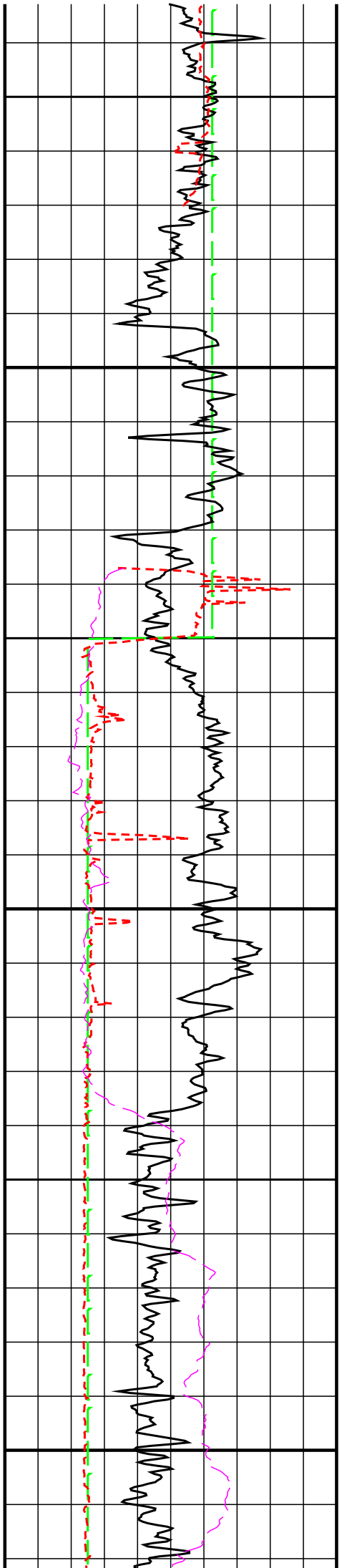
2650



2550

2600

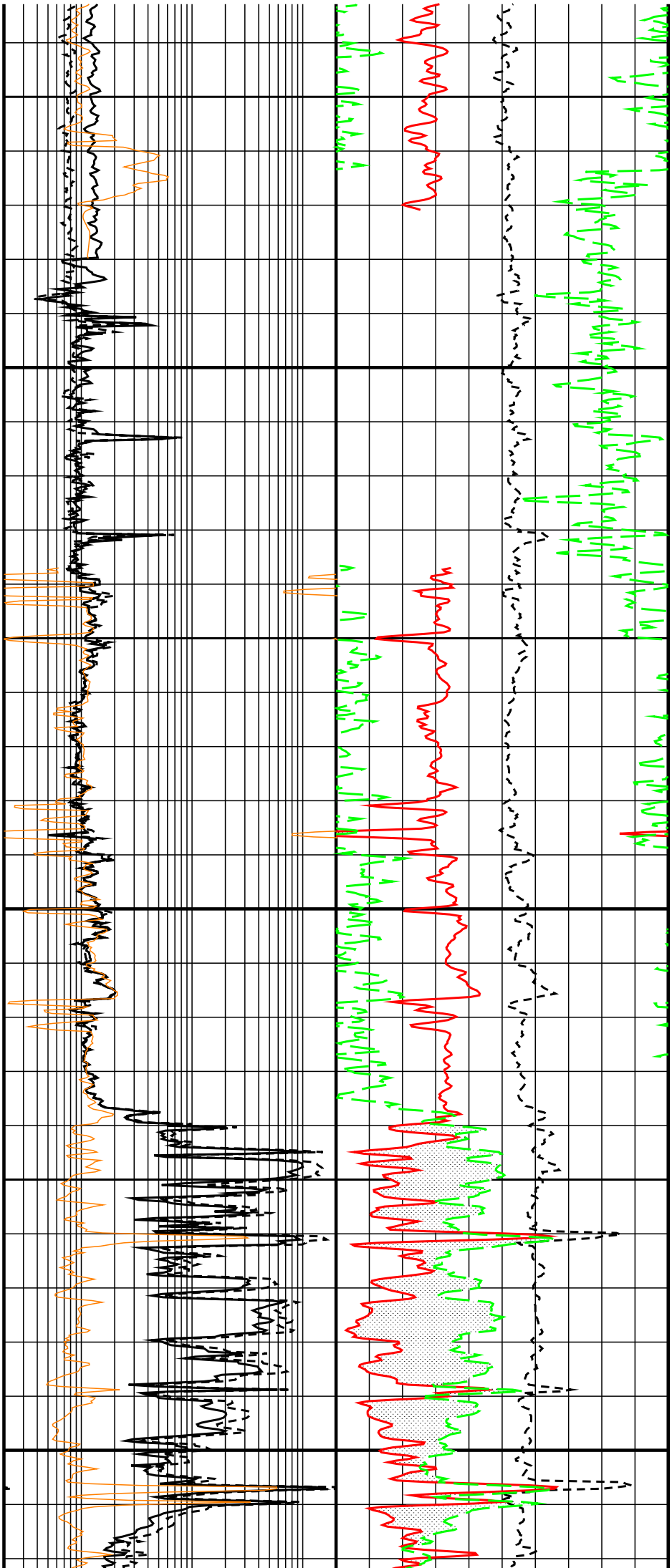
2650

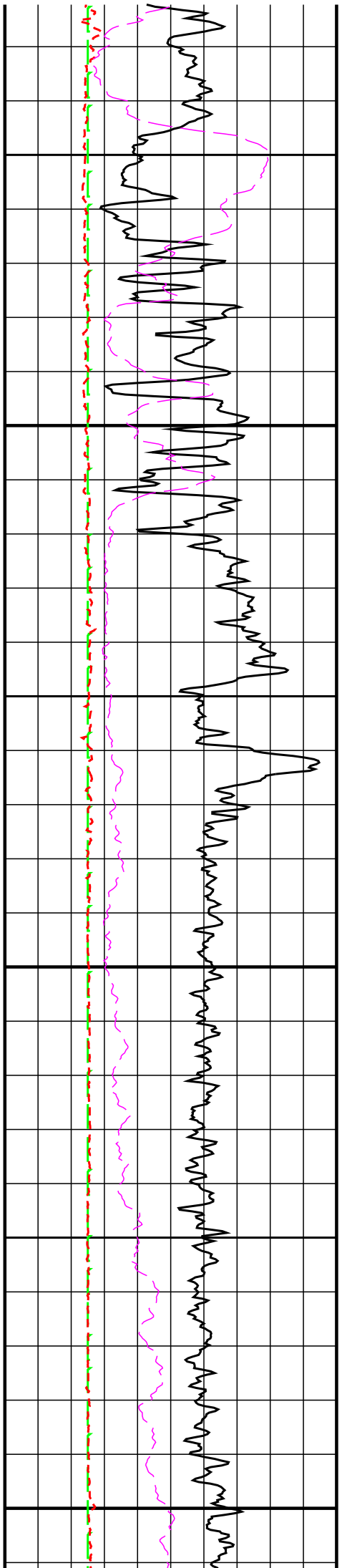


2700

2750

2800

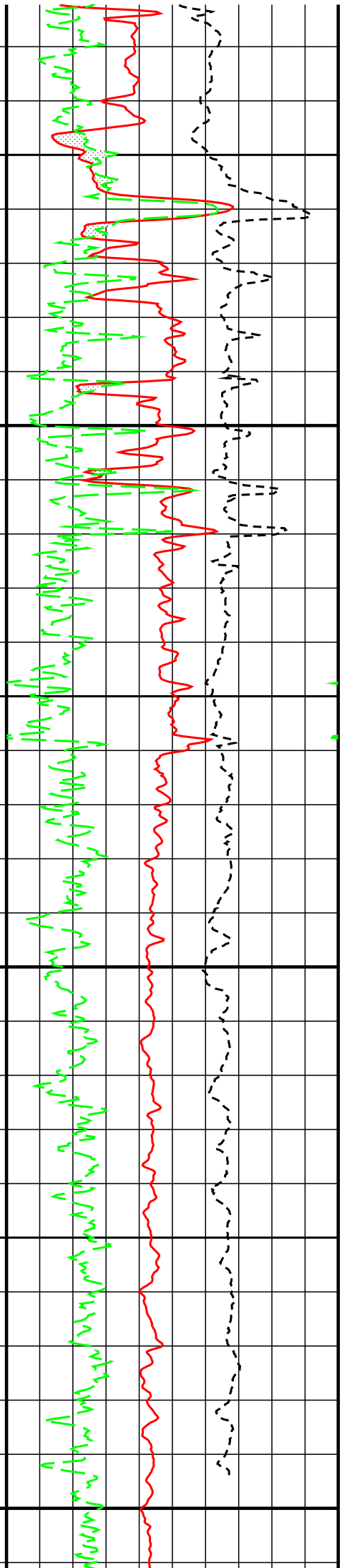
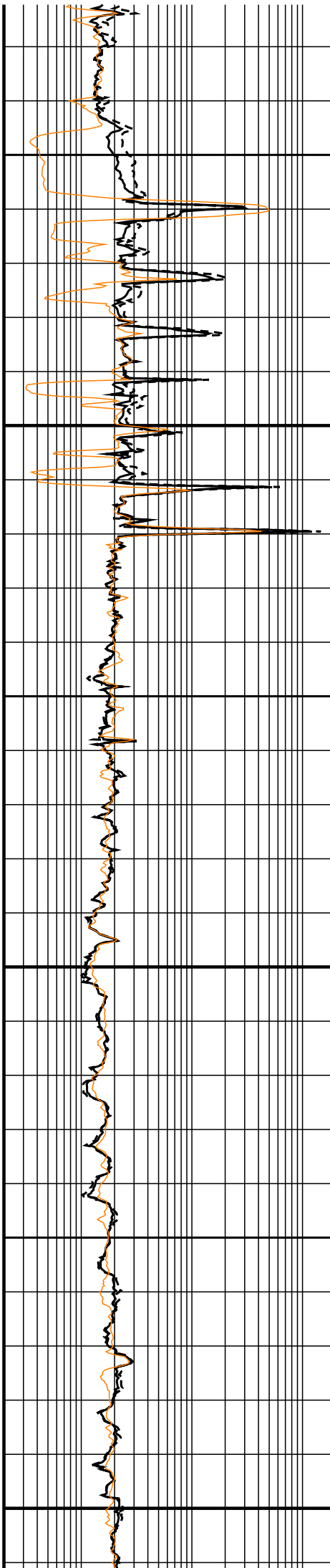


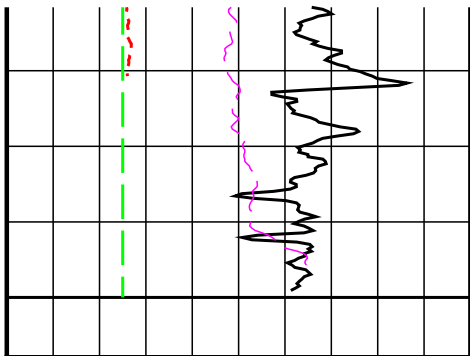


2850

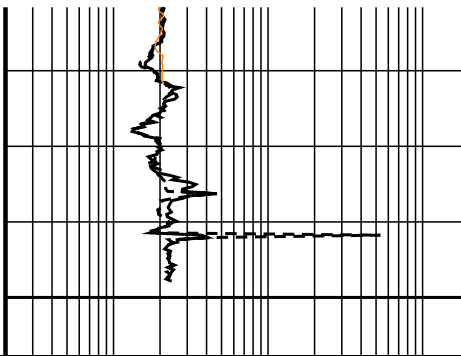
2900

2950

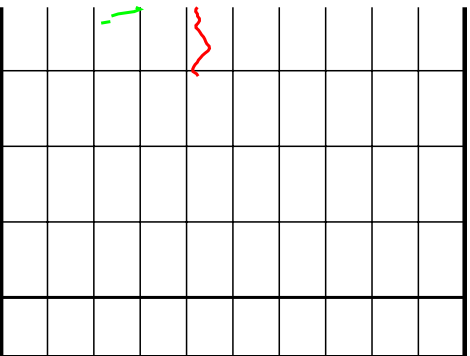




6.0	BS (INCH)	16.0
0.0	GR (API)	150.0
6.0	CALI (INCH)	16.0
0.0	SP ( )	150.0



0.2	RDEP (OHMM)	200.0
0.2	RMED (OHMM)	200.0
0.2	RMIC (OHMM)	200.0



240.0	AC (US/F)	40.0
1.95	DEN (G/CC)	2.95
0.45	NEU (PU)	-0.15