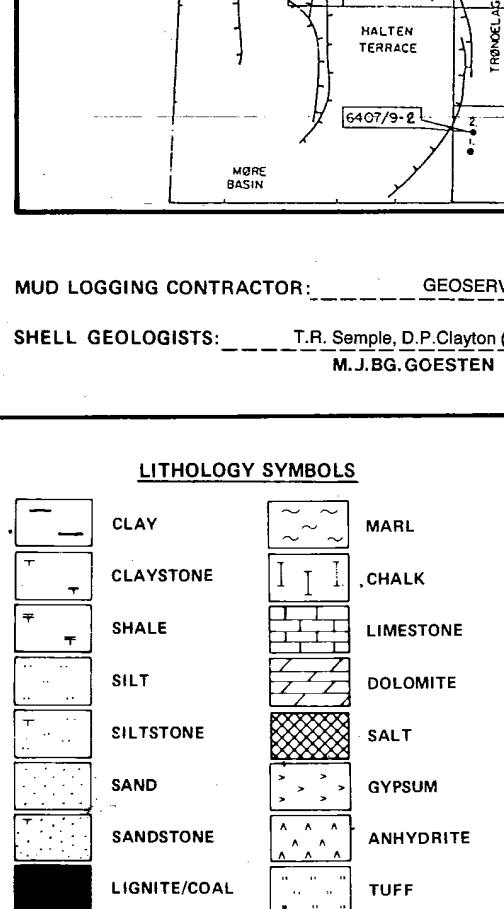


DIGITAL WIRELINE LOGS PACKAGE
 This image may not be used or reproduced without the permission of
 SIMON PETROLEUM TECHNOLOGY

COMPLETION LOG

A/S Norske Shell, E & P
COMPLETION LOG WELL: 6407/9-2



LICENCE: 093
 FIELD: DRAUGEN
 COORDINATES: N 64° 24' 31" E 07° 48' 1.20"
 SPUD DATE: 18.11.84
 COMPLETION DATE: 02.02.85
 RIG: Bony Drogan
 CONTRACTOR: Depra Drilling
 K.B. ELEVATION: 25 m
 WATER DEPTH: 247 m
 T.D. (DRILLER): 1865 moff
 T.D. (LOGGER): 1863 moff
 T.D. FORMATION: MIDDLE DRAGE
 STATUS: Plugged and abandoned
 CASING RECORD: 30" x 10.56 moff, 27" x 8.82 moff, 13.38" x 1575 moff, 9.548" x 1902

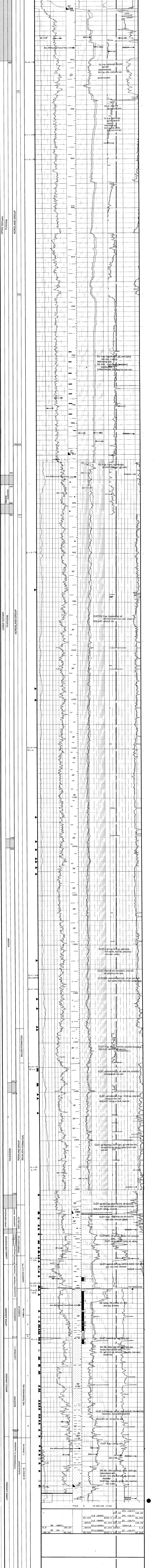
MUD LOGGING CONTRACTOR: GEOSERVICES
 SHELL GEOLOGISTS: T.R. Sæviak, O. Christen (Geoserv), M.J. BO. GÖESTEN

LITHOLOGY SYMBOLS

CLAY	MARL
CLAYSTONE	CHALK
SHALE	LIMESTONE
SILT	DOLomite
SILTSTONE	SALT
SAND	GYPsum
SANDSTONE	ANHYDRITE
LIGNITE/SAL	TUFF
CARBONACEOUS	FOSSIL FRAGS GEN.
BITUMINOUS	
GRAVEL/CONGLOMERATE	QUARTZITE
	HYDROCARBON INDICATORS

LOG NO.	DATE	MEASURED (m)	TYPE	WELL	DEPTH (m)	WELL	RESISTIVITY (ohm m)	WELL
1001	1985	1863	CL	6407/9-2	1863	1863	100	1863
1002	1985	1863	CL	6407/9-2	1863	1863	100	1863
1003	1985	1863	CL	6407/9-2	1863	1863	100	1863
1004	1985	1863	CL	6407/9-2	1863	1863	100	1863
1005	1985	1863	CL	6407/9-2	1863	1863	100	1863
1006	1985	1863	CL	6407/9-2	1863	1863	100	1863
1007	1985	1863	CL	6407/9-2	1863	1863	100	1863
1008	1985	1863	CL	6407/9-2	1863	1863	100	1863
1009	1985	1863	CL	6407/9-2	1863	1863	100	1863
1010	1985	1863	CL	6407/9-2	1863	1863	100	1863

SYSTEM	DEPTH (m)	SP. RES.	APP. RES.	IND. RES.	IND. RES.	IND. RES.	IND. RES.	IND. RES.	IND. RES.
1	1863	100	100	100	100	100	100	100	100
2	1863	100	100	100	100	100	100	100	100
3	1863	100	100	100	100	100	100	100	100
4	1863	100	100	100	100	100	100	100	100
5	1863	100	100	100	100	100	100	100	100
6	1863	100	100	100	100	100	100	100	100
7	1863	100	100	100	100	100	100	100	100
8	1863	100	100	100	100	100	100	100	100
9	1863	100	100	100	100	100	100	100	100
10	1863	100	100	100	100	100	100	100	100



DEPTH (m)	SP. RES. (ohm m)	APP. RES. (ohm m)	IND. RES. (ohm m)	IND. RES. (ohm m)	IND. RES. (ohm m)	IND. RES. (ohm m)	IND. RES. (ohm m)
1863	100	100	100	100	100	100	100
1800	100	100	100	100	100	100	100
1700	100	100	100	100	100	100	100
1620	100	100	100	100	100	100	100
1500	100	100	100	100	100	100	100
1400	100	100	100	100	100	100	100
1300	100	100	100	100	100	100	100
1200	100	100	100	100	100	100	100
1100	100	100	100	100	100	100	100
1000	100	100	100	100	100	100	100
900	100	100	100	100	100	100	100
800	100	100	100	100	100	100	100
700	100	100	100	100	100	100	100
600	100	100	100	100	100	100	100
500	100	100	100	100	100	100	100
400	100	100	100	100	100	100	100
300	100	100	100	100	100	100	100
200	100	100	100	100	100	100	100
100	100	100	100	100	100	100	100
25	100	100	100	100	100	100	100

COSE:
 161 1630.0 - 1640.0 60.4%
 162 1640.0 - 1642.5 44.4%
 163 1642.5 - 1671.5 70.4%
 164 1671.5 - 1684.0 74.4%
 165 1684.0 - 1688.0 68.4%
 166 1688.0 - 1702.0 48.4%
 167 1702.0 - 1702.0 0.4%
 168 1702.0 - 1706.5 87.4%
 169 1706.5 - 1710.0 87.4%
 170 1710.0 - 1710.0 0.4%
 171 1710.0 - 1710.0 0.4%
 172 1710.0 - 1710.0 0.4%
 173 1710.0 - 1710.0 0.4%
 174 1710.0 - 1710.0 0.4%
 175 1710.0 - 1710.0 0.4%
 176 1710.0 - 1710.0 0.4%
 177 1710.0 - 1710.0 0.4%
 178 1710.0 - 1710.0 0.4%
 179 1710.0 - 1710.0 0.4%
 180 1710.0 - 1710.0 0.4%
 181 1710.0 - 1710.0 0.4%
 182 1710.0 - 1710.0 0.4%
 183 1710.0 - 1710.0 0.4%
 184 1710.0 - 1710.0 0.4%
 185 1710.0 - 1710.0 0.4%
 186 1710.0 - 1710.0 0.4%
 187 1710.0 - 1710.0 0.4%
 188 1710.0 - 1710.0 0.4%
 189 1710.0 - 1710.0 0.4%
 190 1710.0 - 1710.0 0.4%
 191 1710.0 - 1710.0 0.4%
 192 1710.0 - 1710.0 0.4%
 193 1710.0 - 1710.0 0.4%
 194 1710.0 - 1710.0 0.4%
 195 1710.0 - 1710.0 0.4%
 196 1710.0 - 1710.0 0.4%
 197 1710.0 - 1710.0 0.4%
 198 1710.0 - 1710.0 0.4%
 199 1710.0 - 1710.0 0.4%
 200 1710.0 - 1710.0 0.4%

TESTING:
 Test no. 1 (PMDA) FORMATION
 Perforated interval: 1670 - 1675.5 moff
 Rate of injection: 4500 L/d
 Water type: Seawater
 Test no. 2 (PMDA) FORMATION
 Perforated interval: 1675 - 1682 moff
 Gross Production: 7400 stb/d
 Oil Production: 7400 stb/d
 Separator O/G: 2.0
 Closure time: 27 days x 14" wellbore
 Oil Gravity: 40° API
 Gas Gravity: 0.96 (AIR = 1)
 CLR content: 1.1%