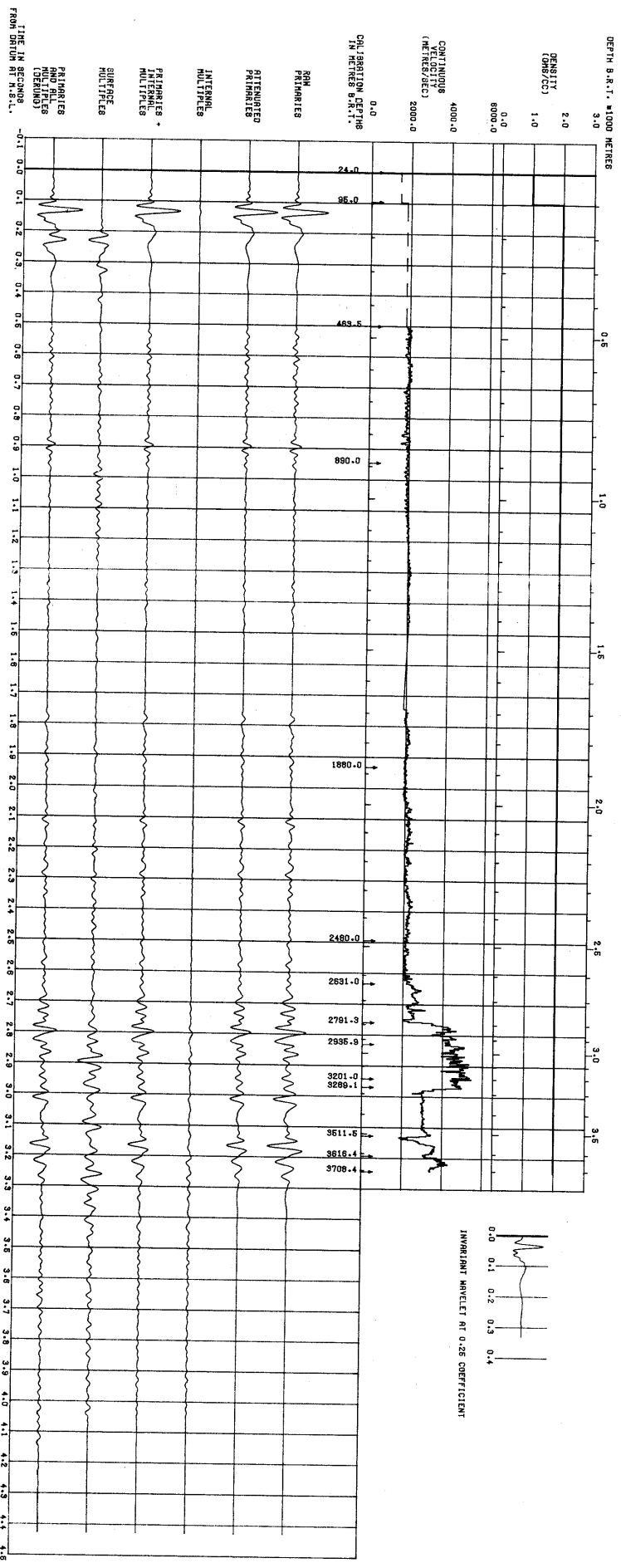


02058 MM  
RUN NO. 1

TIME 4:00 MS  
UNIT 0:00 MS  
SPEED 1:000  
MPEL L 8.0 MS 38.0 38/0CT  
MPEL H 82.0 MS 80.0 38/0CT  
TSRIFT 0.0 MS  
PULSING APPLIED  
LOW CUT 6.0 MS 10.0 HZ  
HIGH CUT 20.0 MS 80.0 HZ  
FIL 3  
TSR 10.00 CM/SEC  
TSR 21.000  
POSITIONAL PRESSURE PLOTTED DOWNWARDS



SYNTHETICS FOR WELL 7/12-3 TO MATCH THE MIGRATED SECTION AT THE WELL (MW).

ENCLOSURE WITH REPORT EPR/R1246

FIG. 3