

Denne rapport
tilhører

 **STATOIL**

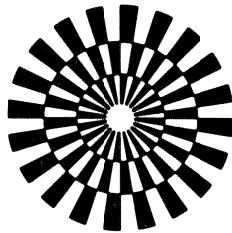
LTEK DOK.SENTER

L.NR. 124 82450001

KODE Well 1/9-6 nr 3

Returneres etter bruk

STATOIL
CONVENTIONAL CORE ANALYSIS
WELL: 1/9-6



GECO
GEOPHYSICAL COMPANY
OF NORWAY A/S

COMPANY: STATOIL DATE: OCT. 82

WELL: 1/9-6 CORE: 4

FIELD: STATE: NORWAY

DEPTH METER	HORIZONTAL PERMEABILITY MILLIDARCY		VERTICAL PERMEABILITY MILLIDARCY		HELIUM POROSITY %	SUMM- ATION PORCS. %	PORE- SATURATION		GRAIN DENS. GR/CC	FORMATION DESCRIPTION
	KA	KL	KA	KL			SO	STh.		
3480.50-56	0.134	0.08	0.131	0.08	25.7				2.66	A.A
3480.80-86	0.034	0.02	0.47	0.30	20.3				2.68	A.A
3481.10										

+) NO MEASUREMENT POSSIBLE
 ++ NO PLUG POSSIBLE
 +++ NO VERTICAL PLUG POSSIBLE
 ++++ NO HORIZONTAL PLUG POSSIBLE

DATE: OCT-82

CORE: 5

STATE: NCRWAY

PAGE: 6

COMPANY: STATOIL

WELL: 1/5-6

FIELD:

 *
 *
 * GFCO A.S. LABORATORY *
 * FINAL REPORT *

DEPTH METER	HORIZONTAL PERMEABILITY MILLIDARCY		VERTICAL PERMEABILITY MILLIDARCY		HELIUM POROSITY %	SUMM- ATION PORCS. %	PORE- SATURATION		GRAIN DENS. GR/CC	FORMATION DESCRIPTION
	KA	KL	KA	KL			S0	ST%		
3481.70					17.4	7.7	10.0	83.5	2.69	CHALK, MH.
3481.81-91	0.045	0.02	+		15.6				2.69	A.A
3482.13-19	0.031	0.02	+		24.6				2.67	A.A
3482.77-84	0.086	0.05	0.127	0.07	15.4	2.1	5.8	57.7	2.70	A.A
3483.17-27	0.020	0.01	0.036	0.02	28.1				2.66	A.A
3483.70-78	0.194	0.12	0.167	0.10	22.4	15.5	11.3	15.5	2.71	A.A
3484.25-40	0.040	0.02	0.075	0.04	21.4				2.69	A.A
3484.74-82	0.039	0.02	+++)		15.6	5.2	0.0	93.2	2.70	A.A W/PYR.
3485.04-10	0.022	0.01	0.100	0.06	15.6				2.70	A.A
3485.55-67	0.021	0.01	0.013	0.01	15.6				2.70	A.A
3486.07-14	0.010	<0.01	0.012	0.01	13.7				2.70	A.A
3486.31-44	0.021	0.01	+		10.5	3.4	0.0	94.6	2.70	A.A
3486.65-79	0.011	0.01	0.014	0.01	13.2				2.65	A.A
3486.93-98	0.015	0.01	0.027	0.01	12.6				2.65	A.A W/LAMINAE
3487.49-55	0.034	0.02	+		12.1	6.3	12.2	81.6	2.71	A.A W/LAMINAE
3487.80-88	0.014	0.01	0.013	0.01	15.2				2.69	A.A
3488.25-32	0.040	0.02	0.057	0.02	21.8				2.68	A.A
3488.65-71	0.025	0.01	0.038	0.02	17.6	7.5	0.0	92.1	2.69	A.A
3489.00-10	0.014	0.01	0.032	0.02	15.5				2.69	A.A W/PYR.
3489.45-51	0.010	<0.01	+		14.6				2.69	A.A
3489.73-80	0.097	0.06	+		22.8	22.1	7.1	13.2	2.67	A.A
3490.00-09	0.135	0.08	0.117	0.07	27.0				2.68	A.A
3490.42-48	0.063	0.04	+		24.2				2.70	A.A
3490.90-97	0.018	0.01	0.014	0.01	15.1				2.69	A.A W/LAMINAE
3491.18-26	0.034	0.02	+		12.1	8.5	0.0	92.1	2.69	A.A
3491.47-54	0.025	0.01	0.016	0.01	14.9				2.69	A.A
3491.74-81	+		+		13.5	1.0	0.0	54.3	2.69	A.A
3492.00-09	0.103	0.06	+		24.8				2.68	A.A
3492.62-67	0.015	0.01	0.012	0.01	14.8				2.69	A.A
3492.94-00	0.165	0.10	0.202	0.12	28.6				2.67	A.A
3493.29-40	0.130	0.08	0.30	0.15	26.4	22.0	4.9	9.8	2.67	A.A
3493.73-79	0.086	0.05	0.080	0.05	24.2				2.67	A.A
3494.12-18	0.070	0.04	0.162	0.10	23.9				2.67	A.A
3494.35-44	0.025	0.01	0.019	0.01	11.1	8.7	19.2	54.9	2.68	A.A
3494.70-76	+		0.023	0.01	20.7				2.68	A.A
3495.11-19	0.017	0.01	+		13.0				2.70	A.A
3495.54-64	0.013	0.01	0.013	0.01	15.0	4.7	0.0	91.5	2.69	A.A
3496.02-10	0.011	0.01	0.010	0.01	11.6				2.68	A.A
3496.43-50	+		0.101	0.06	23.4	9.0	27.6	60.7	2.68	A.A
3497.05-19	0.017	0.01	+		15.9				2.69	A.A
3497.45-51	++++)		+++)		+++)					
3497.84-90	0.026	0.01	0.039	0.02	18.2				2.69	A.A W/PYR.
3498.23-33	0.041	0.02	+		20.6	5.3	2.3	84.1	2.69	A.A
3498.57-62	0.166	0.10	0.055	0.03	20.5				2.69	A.A
3498.90-98	0.054	0.03	0.027	0.01	15.1				2.70	A.A

COMPANY: STATOIL DATE: OCT.82

WELL: 1/9-6 CCRE: 5

FIELD: STATE: NORWAY

DEPTH METER	HORIZONTAL PERMEABILITY MILLIDARCY KA	VERTICAL PERMEABILITY MILLIDARCY KA	HELIUM PERCENTAGE %	SUMM- ATION POROS. %	PCRE- SATURATION SO	GRAIN DENS. GR/CC	FORMATION DESCRIPTION
3499.32-38	+	0.010	<0.01	6.3	2.69	A.A	
3499.50							

- +) NO MEASUREMENT POSSIBLE
- ++) NO PLUG POSSIBLE
- +++) NC VERTICAL PLUG POSSIBLE
- ++++) NC HORIZONTAL PLUG POSSIBLE

COMPANY: STATOIL DATE: OCT.82

WELL: 1/5-6 CORE: 6

FIELD: STATE: NORWAY

DEPTH METER	HORIZONTAL PERMEABILITY MILLIDARCY		VERTICAL PERMEABILITY MILLIDARCY		HELIUM PERCENTAGE	SUMM- ATION POROS. %	PORE- SATURATION		GRAIN DENS. GR/CC	FORMATION DESCRIPTION
	KA	KL	KA	KL			SO	STM.		
3517.42-53	0.175	0.11	0.151	0.09	19.1	16.4	7.6	19.8	2.69	A.A
3517.70-80	0.22	0.13	0.205	0.13	19.9				2.65	A.A
3517.80										

+) NO MEASUREMENT POSSIBLE
 ++ NO PLUG POSSIBLE
 +++ NO VERTICAL PLUG POSSIBLE
 ++++) NO HORIZONTAL PLUG POSSIBLE

COMPANY: STATOIL DATE: OCT. 82

WELL: 1/9-6 CORE: 9

FIELD: STATE: NORWAY

DEPTH METER	HORIZONTAL PERMEABILITY		VERTICAL PERMEABILITY		HELIUM POROSITY %	SUMM- ATION PORCS. %	PORE- SATURATION		GRAIN DENS. GR/CC	FORMATION DESCRIPTION
	KA	KL	KA	KL			SD	STW.		
3554.50-59	1.3	0.91	1.2	0.83	27.5				2.71	A-A
3554.80-88	1.4	1.0	1.4	1.0	27.4				2.71	A-A
3555.50-60	1.8	1.3	1.8	1.3	25.4	25.9	2.4	43.2	2.71	A-A
3555.80-86	2.4	1.7	3.1	2.2	25.6				2.71	A-A
3555.94										

- +) NO MEASUREMENT POSSIBLE
- ++) NO PLUG POSSIBLE
- +++ NO VERTICAL PLUG POSSIBLE
- ++++ NO HORIZONTAL PLUG POSSIBLE

COMPANY: STATCIL DATE: OCT-92

WELL: 1/5-6 CORE: 10

FIELD: STATE: NORWAY

DEPTH METER	HORIZONTAL PERMEABILITY MILLIDARCY		VERTICAL PERMEABILITY MILLIDARCY		HELIUM PERCENTAGE	SUMM- ATION PERCENTAGE	PORE- SATURATION		GRAIN DENS. GR/CC	FORMATION DESCRIPTION
	KA	KL	KA	KL			SO	STH.		
3572.57-65	3.6	2.5	2.8	2.0	30.5	21.1	4.3	44.4	2.71	A-A
3573.26-37	1.07	0.73	0.73	0.48	25.1				2.71	A-A
3573.50										

- +) NO MEASUREMENT POSSIBLE
- ++) NO PLUG POSSIBLE
- +++) NO VERTICAL PLUG POSSIBLE
- ++++) NO HORIZONTAL PLUG POSSIBLE

COMPANY:STATOIL
 WELL: 1/5-6
 FIELD:

GECO A.S. LABORATORY
 FINAL REPORT

DEPTH METER	HORIZONTAL PERMEABILITY MILLIDARCY		VERTICAL PERMEABILITY MILLIDARCY		HELIUM POROSITY %	SUM- MATION POROS. %	PORE- SATURATION		GRAIN DENS. GR/CC	FORMATION DESCRIPTION
	KA	KL	KA	KL			SO	STM.		
3584.75	1.7	1.2	0.76	0.51	22.3	19.9	3.7	21.9	2.71	CHALK, MH
3584.86-98	2.0	1.4	1.02	0.65	25.4				2.71	A-A
3585.21-28	4.4	3.3	0.75	0.53	20.4				2.72	A-A
3585.55-62	1.01	0.69	1.6	1.1	25.5	20.4	3.5	16.4	2.71	A-A
3585.93-04	4.5	3.3	0.86	0.58	23.2				2.71	A-A
3586.33-41	1.6	1.1	1.2	0.83	25.4				2.70	A-A
3586.67-74	1.3	0.91	1.11	0.80	25.0	22.8	4.2	24.9	2.71	A-A
3586.98-07	0.45	0.29	0.59	0.38	20.7				2.71	A-A
3587.30-37	3.7	2.7	0.92	0.62	23.6				2.71	A-A
3587.75-81	0.72	0.48	0.68	0.45	23.5	19.3	0.0	1.2	2.71	A-A
3588.13-25	1.08	0.73	1.2	0.83	25.7				2.71	A-A
3588.49-55	0.201	0.12	0.31	0.15	15.7	14.7	0.0	8.1	2.71	A-A
3588.83-94	1.11	0.8	+		26.6				2.71	A-A
3589.40-48	0.66	0.44	0.55	0.36	22.9	20.8	4.8	36.9	2.71	A-A
3589.72-79	2.0	1.4	+++)		23.1				2.71	A-A
3590.00-10	0.96	0.65	0.86	0.58	24.9				2.71	A-A
3590.30-37	0.21	0.13	0.31	0.19	18.0				2.71	A-A
3590.74-80	0.46	0.29	0.98	0.67	15.6	14.6	0.0	3.4	2.71	A-A
3591.00-09	0.42	0.27	0.52	0.34	20.3				2.71	A-A
3591.30-35	0.23	0.14	0.23	0.14	18.5				2.71	A-A
3591.70-77	0.39	0.25	0.24	0.15	20.7	17.3	0.0	12.8	2.70	A-A
3592.00-10	1.6	1.0	1.4	1.0	25.1				2.71	A-A
3592.65-71	1.4	1.0	1.5	1.0	25.7				2.71	A-A
3593.10-18	0.40	0.26	0.27	0.17	20.1	13.0	0.0	1.9	2.71	A-A
3593.40-50	1.8	1.3	0.35	0.22	18.2				2.65	A-A
3593.70-79	0.47	0.30	0.49	0.32	25.5				2.70	A-A
3594.07-17	0.64	0.42	0.69	0.45	21.0	21.1	4.6	34.8	2.71	A-A
3594.42-52	1.4	1.0	0.84	0.56	25.1	17.5	0.7	19.7	2.70	A-A
3595.55-69	0.64	0.42	2.6	1.9	21.9				2.70	A-A
3595.83-90	0.48	0.31	1.5	1.0	21.2	20.9	0.6	35.0	2.70	A-A
3596.15-25	0.41	0.26	+++)		20.0				2.71	A-A
3596.60-70	1.5	1.0	1.6	1.1	25.8				2.72	A-A
3596.90-95	2.4	1.7	2.2	1.6	29.5				2.71	A-A
3597.26-35										
3597.45										

+) NO MEASUREMENT POSSIBLE
 ++ NO PLUG POSSIBLE
 +++ NO VERTICAL PLUG POSSIBLE
 ++++) NO HORIZONTAL PLUG POSSIBLE

COMPANY: STATOIL DATE: OCT.82
 WELL: 1/S-6 CORE: 13
 FIELD: STATE: NORWAY

DEPTH METER	HORIZONTAL PERMEABILITY MILLIDARCY		VERTICAL PERMEABILITY MILLIDARCY		HELIUM PERCENTAGE %	SUMM- ATION POROS. %	PORE- SATURATION		GRAIN DENS. GR/CC	FORMATION DESCRIPTION
	KA	KL	KA	KL			SO	STW.		
3614.10-16	0.62	0.41	0.196	0.12	18.8				2.72	A.A
3614.33-42	0.164	0.10	0.126	0.07	16.6	16.5	4.8	36.5	2.72	A.A
3614.65-71	0.27	0.17	0.22	0.13	17.8				2.72	A.A
3615.10-16	0.143	0.08	+		15.6				2.72	A.A
3615.40-45	0.27	0.17	0.42	0.27	15.0	21.5	3.5	34.7	2.72	A.A
3615.65-72	0.51	0.33	0.32	0.20	19.6				2.72	A.A
3615.84										

+) NO MEASUREMENT POSSIBLE
 ++) NO PLUG POSSIBLE
 +++) NO VERTICAL PLUG POSSIBLE
 +++++) NO HORIZONTAL PLUG POSSIBLE

DATE: OCT.82
 CORE: 14
 STATE: NORWAY

COMPANY: STATCIL
 WELL: 1/5-6
 FIFLD:

PAGE: 20

 *
 *
 * GECG A.S. LABORATORY
 * FINAL REPORT
 *
 *

DEPTH METER	HORIZONTAL PERMEABILITY MILLIDARCY KA KL	VERTICAL PERMEABILITY MILLIDARCY KA KL	HELIUM PORCSITY %	SUM- ATTEN PORCS. %	PORE- SATURATION SO	GRAIN DENS. GR/CC	FORMATION DESCRIPTION
----------------	---	---	-------------------------	------------------------------	---------------------------	-------------------------	--------------------------

3618.10
 3618.70

- +) NC MEASUREMENT POSSIBLE
- ++) NC PLUG POSSIBLE
- +++) NO VERTICAL PLUG POSSIBLE
- ++++) NC HORIZONTAL PLUG POSSIBLE

COMPANY: STATOIL

FIELD:

FILE: 9365

WELL: 1/9-6

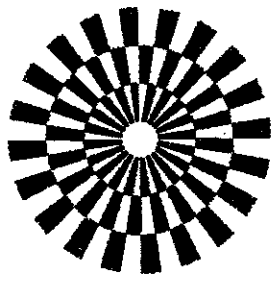
COUNTY:

DATE: OCT.82

LOCATION:

STATE: NORWAY

ELEV.:



CORE GRAPH

THESE ANALYSES, OPINIONS OR INTERPRETATIONS ARE BASED ON OBSERVATIONS AND MATERIAL SUPPLIED BY THE CLIENT TO WHOM, AND FOR WHOM EXCLUSIVE AND CONFIDENTIAL USE. THIS REPORT IS MADE. THE INTERPRETATIONS OR OPINIONS EXPRESSED REPRESENT THE BEST JUDGMENT OF GECO LABORATORIES AND ITS OFFICERS AND EMPLOYEES.

GECO
GEOPHYSICAL COMPANY
OF NORWAY A.S

VERTICAL SCALE: 1:200

LABORATORY

CORE-GAMMA SURFACE-LOG
(PATENT APPLIED FOR)
GAMMA RAY
RADIATION INCREASE ----->
VOLTAGE: 985 VOLT
INTEGRATING TIME: 11 SEC
COUNTS PER MINUTE: 10 K

DEPTH
METER

POROSITY & PERMEABILITY mD

HORIZONTAL PERMEABILITY: x
VERTICAL PERMEABILITY: a

FLUID SATURATION

OTHER: x OIL: x WATER: x
% 80 60 40 20 %

3500.00

3503.00

3506.00

3509.00

3512.00

3515.00

3518.00

3518.00

3521.00

3524.00

3527.00

3530.00

3533.00

3531.00

3534.00

3537.00

CORE NO: 6

CORE NO: 7

CORE NO: 8

LOGGED INTERVAL:

CORE NO.6 :
3500.00 - 3517.80

CORE NO.7 :
3518.30 - 3530.00

CORE NO.8 :
3530.50 - 3534.25

COMPANY: STATOIL

FIELD:

FILE: 9365

WELL: 1/9-6

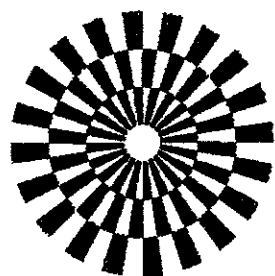
COUNTY:

DATE: OCT.82

LOCATION:

STATE: NORWAY

ELEV.:



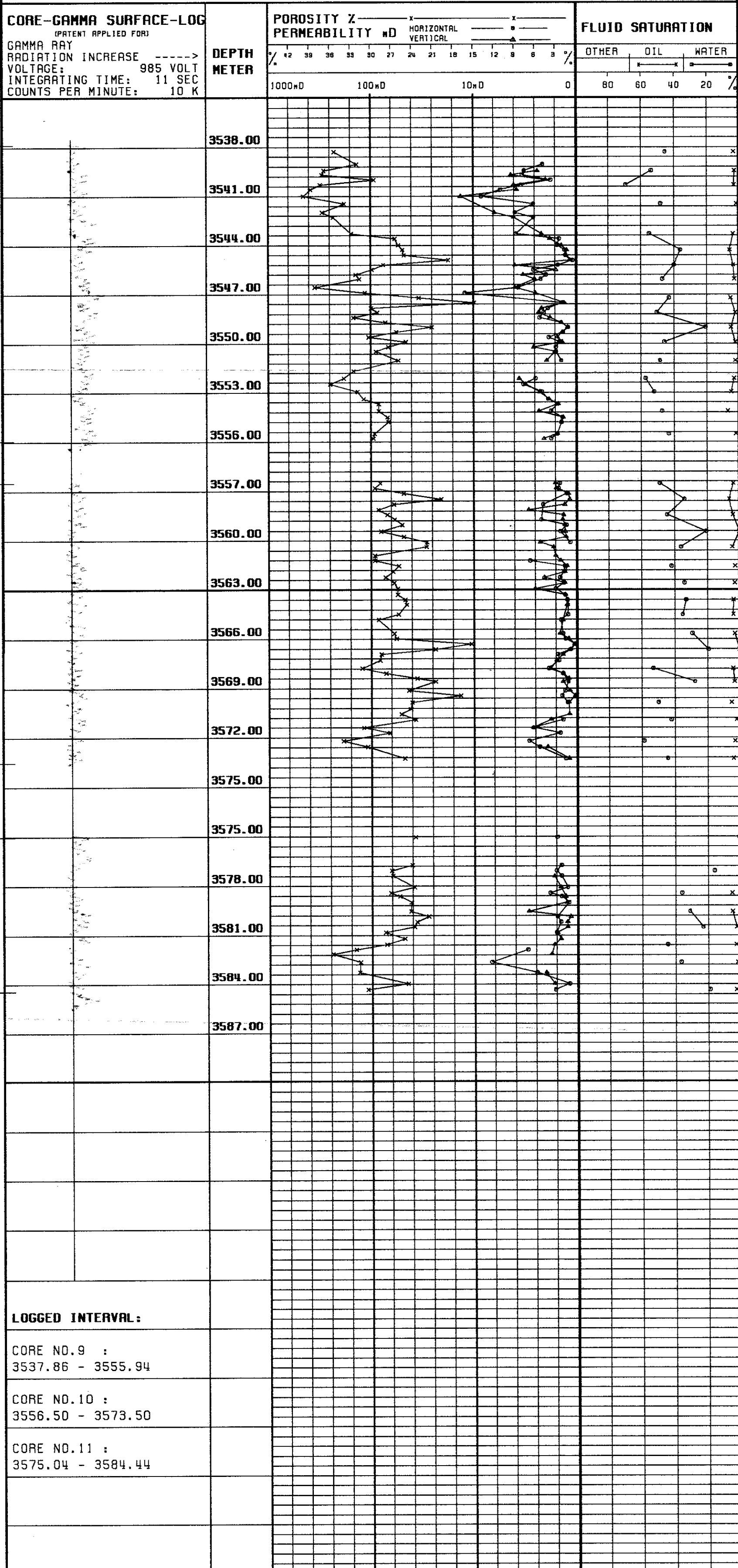
CORE GRAPH

THESE ANALYSES, OPINIONS OR INTERPRETATIONS ARE BASED ON OBSERVATIONS AND MATERIAL SUPPLIED BY THE CLIENT TO WHOM, AND FOR WHOSE EXCLUSIVE AND CONFIDENTIAL USE, THIS REPORT IS MADE. THE INTERPRETATIONS OR OPINIONS EXPRESSED REPRESENT THE BEST JUDGMENT OF GECO LABORATORIES AND ITS OFFICERS AND EMPLOYEES.

GECO
GEOPHYSICAL COMPANY
OF NORWAY A.S

VERTICAL SCALE: 1:200

LABORATORY



CORE NO: 9

CORE NO: 10

CORE NO: 11

COMPANY: STATOIL

FIELD:

FILE: 9365

WELL: 1/9-6

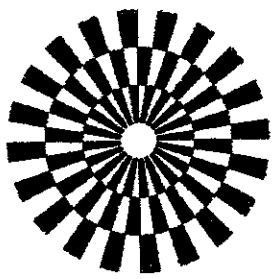
COUNTY:

DATE: OCT.82

LOCATION:

STATE: NORWAY

ELEV.:



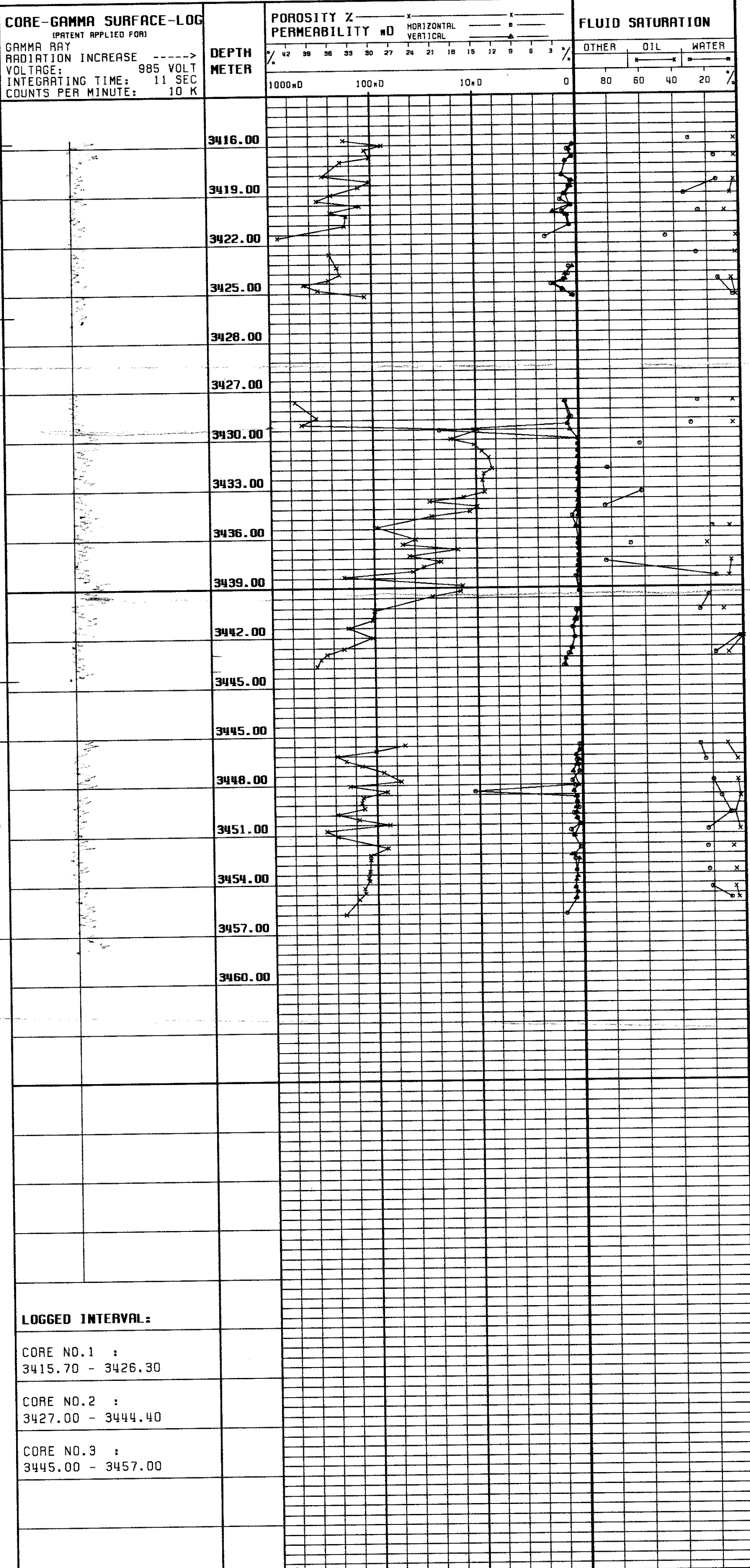
CORE GRAPH

THESE ANALYSES, OPINIONS OR INTERPRETATIONS ARE BASED ON OBSERVATIONS AND MATERIAL SUPPLIED BY THE CLIENT TO WHOM, AND FOR WHOM EXCLUSIVE AND CONFIDENTIAL USE. THIS REPORT IS MADE. THE INTERPRETATIONS OR OPINIONS EXPRESSED REPRESENT THE BEST JUDGEMENT OF GECO LABORATORIES AND ITS OFFICERS AND EMPLOYEES.

GECO
GEOPHYSICAL COMPANY
OF NORWAY A.S

VERTICAL SCALE: 1:200

LABORATORY



COMPANY: STATOIL

FIELD:

FILE: 9365

WELL: 1/9-6

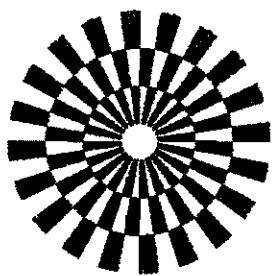
COUNTY:

DATE: OCT.82

LOCATION:

STATE: NORWAY

ELEV.:



CORE GRAPH

THESE ANALYSES, OPINIONS OR INTERPRETATIONS ARE BASED ON OBSERVATIONS AND MATERIAL SUPPLIED BY THE CLIENT TO WHOM, AND FOR WHOM EXCLUSIVE AND CONFIDENTIAL USE, THIS REPORT IS MADE. THE INTERPRETATIONS OR OPINIONS EXPRESSED REPRESENT THE BEST JUDGEMENT OF GECO LABORATORIES AND ITS OFFICERS AND EMPLOYEES.

GECO
GEOPHYSICAL COMPANY
OF NORWAY A.S.

VERTICAL SCALE: 1:200

LABORATORY

CORE-GAMMA SURFACE-LOG

(PATENT APPLIED FOR)
GAMMA RAY
RADIATION INCREASE ----->
VOLTAGE: 985 VOLT
INTEGRATING TIME: 11 SEC
COUNTS PER MINUTE: 10 K

DEPTH
METER

POROSITY %
PERMEABILITY mD

HORIZONTAL
VERTICAL

FLUID SATURATION

OTHER OIL WATER

1000mD 100mD 10mD 0 80 60 40 20 %

CORE NO: 12

CORE NO: 13

CORE NO: 14

3585.00
3588.00
3591.00
3594.00
3597.00
3600.00
3598.00
3601.00
3604.00
3607.00
3610.00
3613.00
3616.00
3618.00
3621.00

LOGGED INTERVAL:

CORE NO.12 :
3584.79 - 3597.49

CORE NO.13 :
3598.00 - 3615.84

CORE NO.14 :
3618.10 - 3618.70