

# FLOPE

Denne rapport  
tilhører



## LTEK DOK.SENTER

L.NR. 12383020004  
KODE Well 1/9-6 nr17  
Returneres etter bruk

### HIGH ACCURACY PRESSURE TEMPERATURE MEASUREMENTS

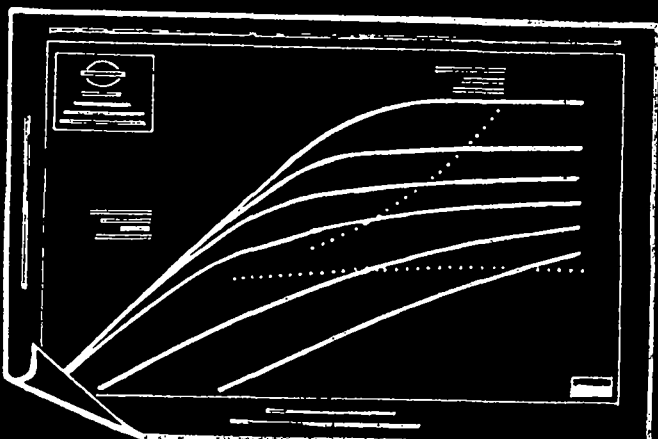
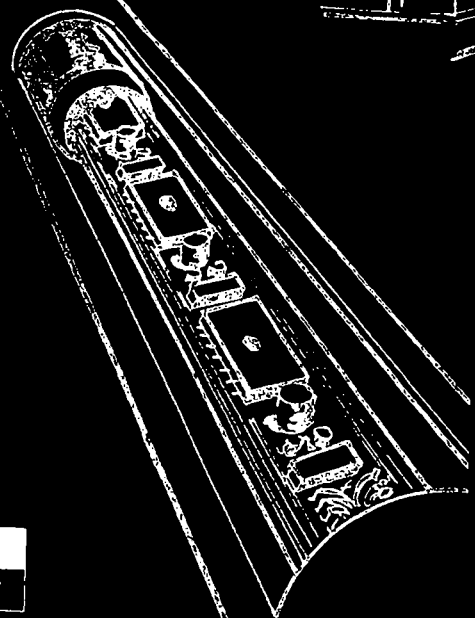
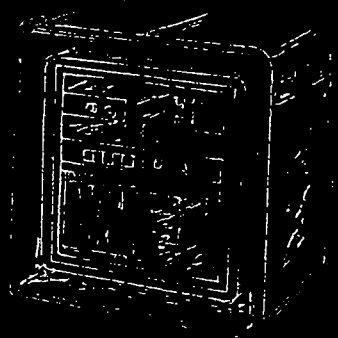
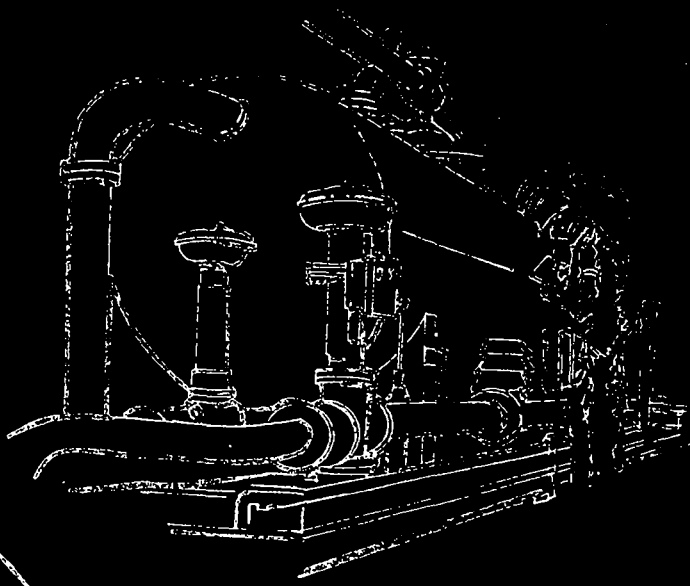
Company: PHILLIPS P. Co. Country: NORWAY

Field: TOMMELITEN

Well: 1/9 - 6

Zone:

Date: 6th - 7th SEPT



FLOPETROL  
Schlumberger

PHILIPMETROL

DISTRICT: EMR

BASE : STAVANGER

REPORT N°: ELS 82/48A

HIGH ACCURACY  
PRESSURE TEMPERATURE  
MEASUREMENTS 12

Company: PHILLIPS P. Co. Country: NORWAY

Field: TOMMELITEN Well: 1/9 - 6

Zone: Date: 6th - 7th SEPT. 1982

PERFORATION : 12,374 - 12,391 Ft.

D.S.T. No. 1

GAUGE : SSSR No. 82 104

DEPTH : 12,321,5 Ft.

**FLOPETROL**Country : NORWAY

Section

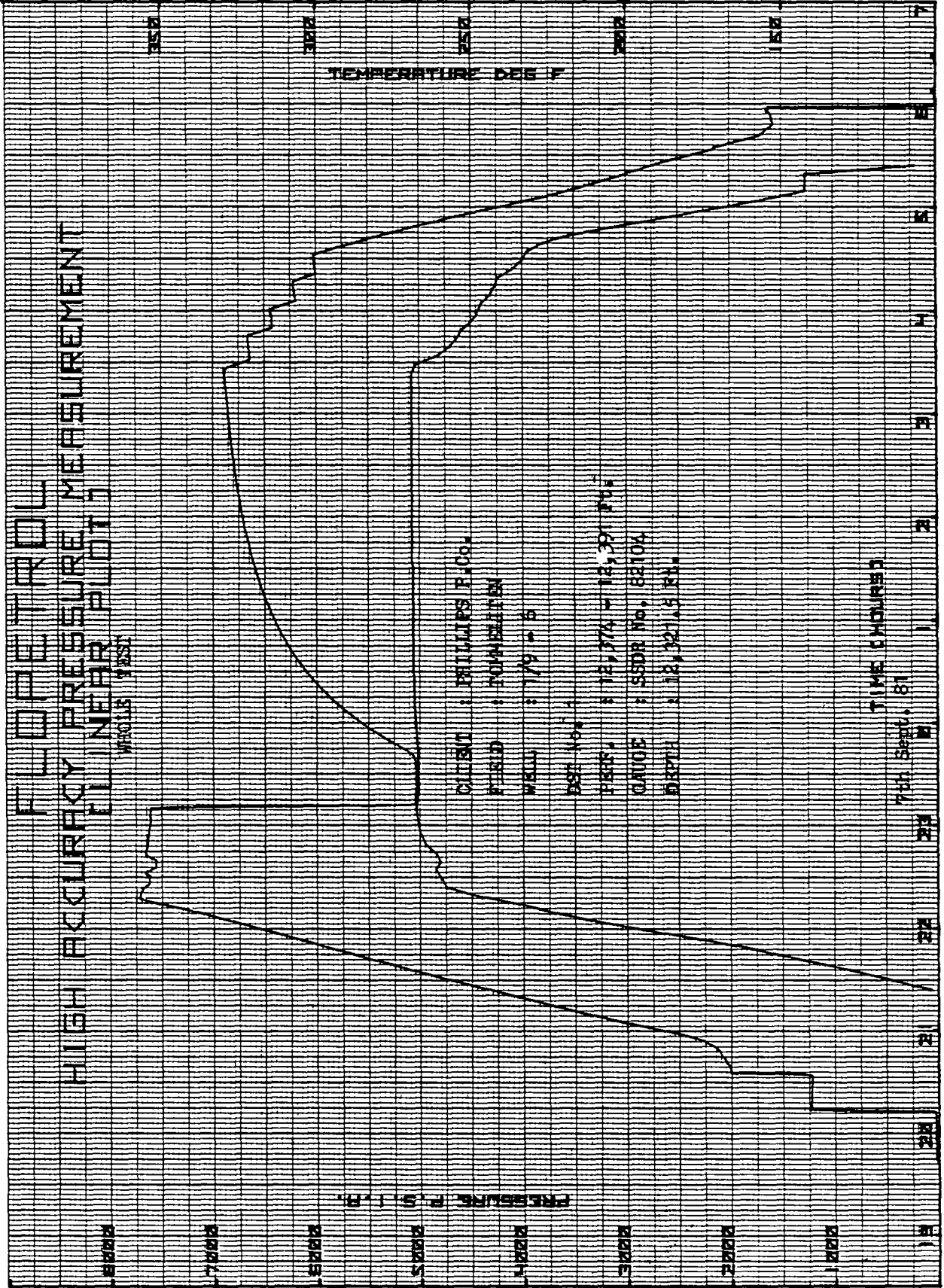
INDEX

Field : TOMMELITENBase STAVANGERWell : 1/9-6Report No : ELS 82/48A

## INDEX

- 1 - MEASUREMENT PLOTS
- 2 - MEASUREMENT DATA
- 3 - SEQUENCE OF EVENTS
- 4 - WELL COMPLETION DATA
- 5 - LISTING OF ALL DATA RECORDED
- 6 -
- 7 -

Flopetrol operator: P. Porsedal  
A. EngebakkenCompany representative: J. Stevens  
J. Danbelsen



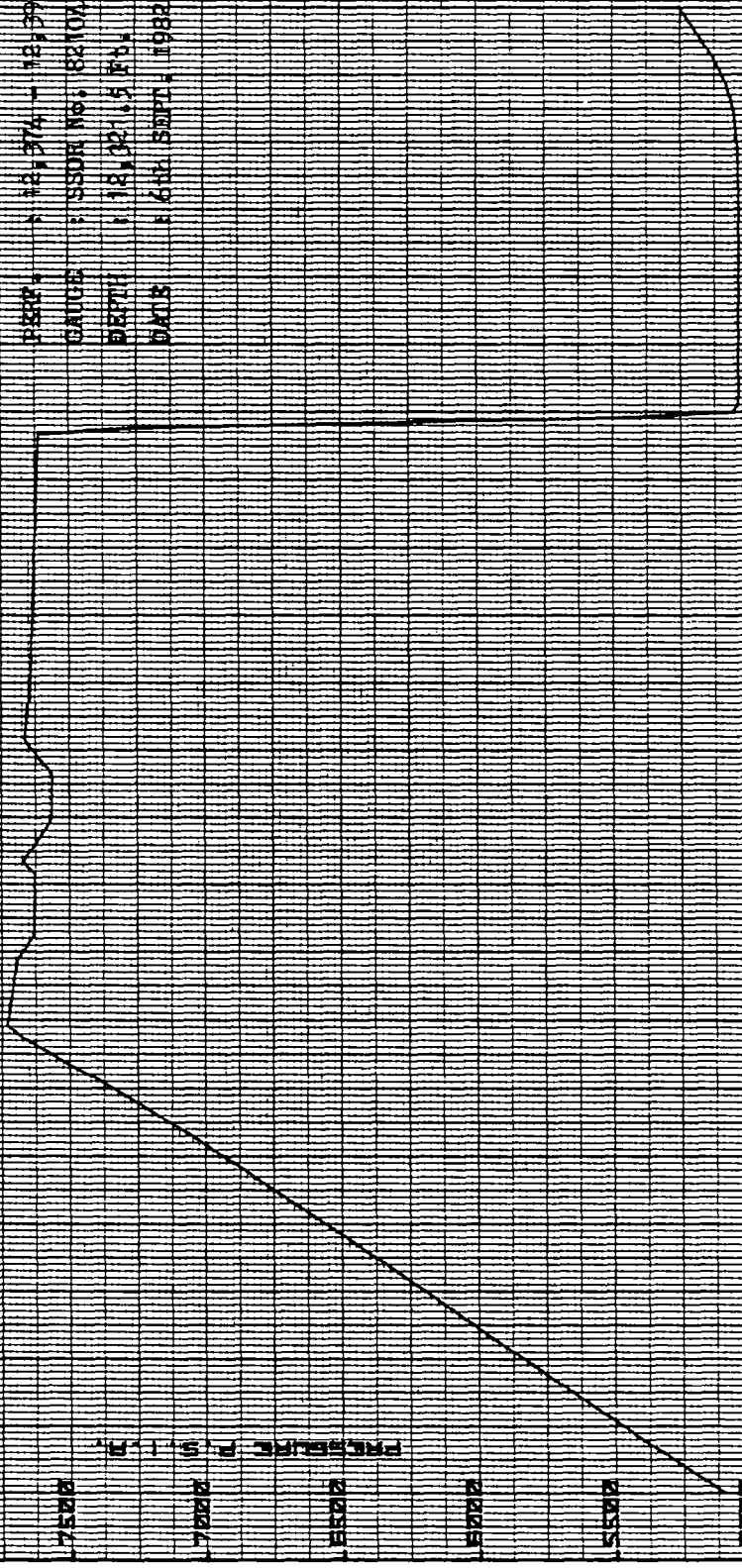
HIGH ACCURACY FORESTAL PRESSURE MEASUREMENT  
 FLUX NEAR PLOT

PLAN DOWN

CLIENT : PHILLIPS P.L.D.  
 FIELD : TONWELTSH  
 WELL : 179-6  
 DST No. :  
 PERM. : 12,374 - 12,391.50,  
 GAUGE : SSOR No. 82102  
 DEPTH : 18,321.5 Ft.  
 DATE : 6th SEPT, 1982

8500  
8000  
7500  
7000  
6500  
6000  
5500  
5000

PRESSURE P.S.I.

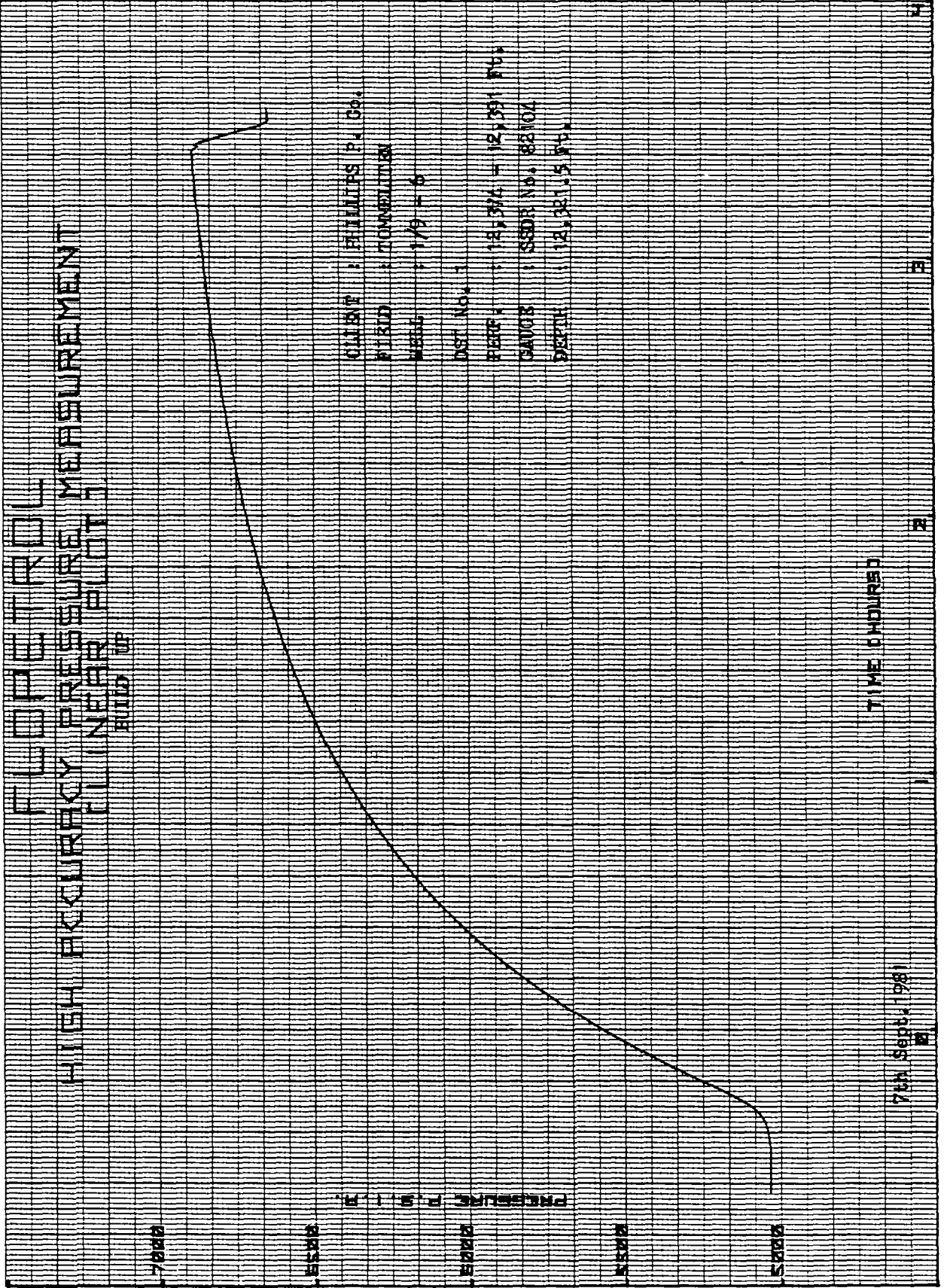


TIME HOURS

22

24

FLUORETROL  
HIGH ACCURACY PRESSURE MEASUREMENT  
FLUORETROL  
BUILD UP



CLIENT : PHILLIPS P. Co.  
FIELD : CONWELLTON  
WELL : 179 - 6  
DST No. : 1  
DEPTH : 12,321.5 ft.  
GROSS : 12,321.5 ft.  
NET : 12,321.5 ft.

7th Sept. 1981

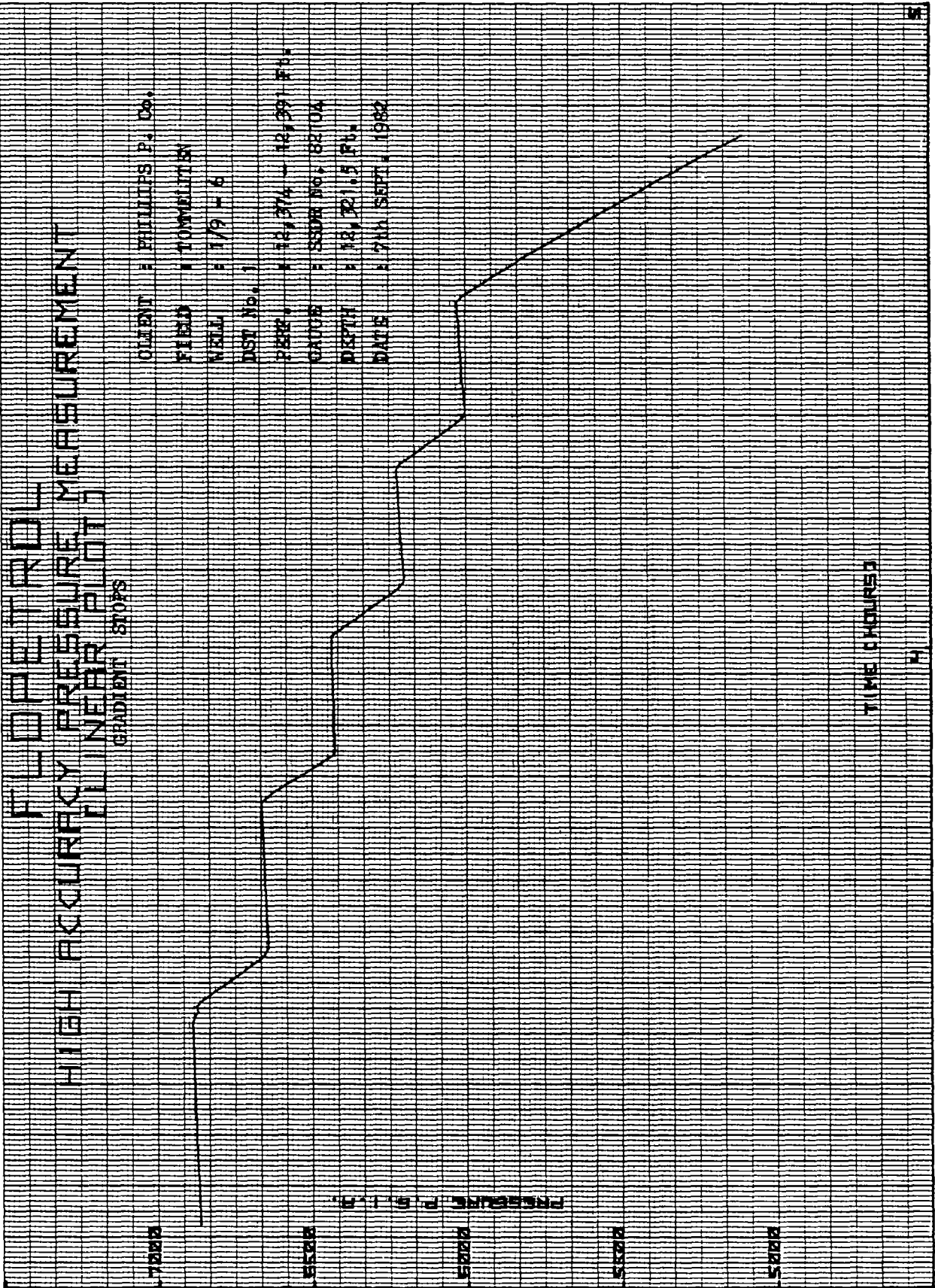
TIME HOURS

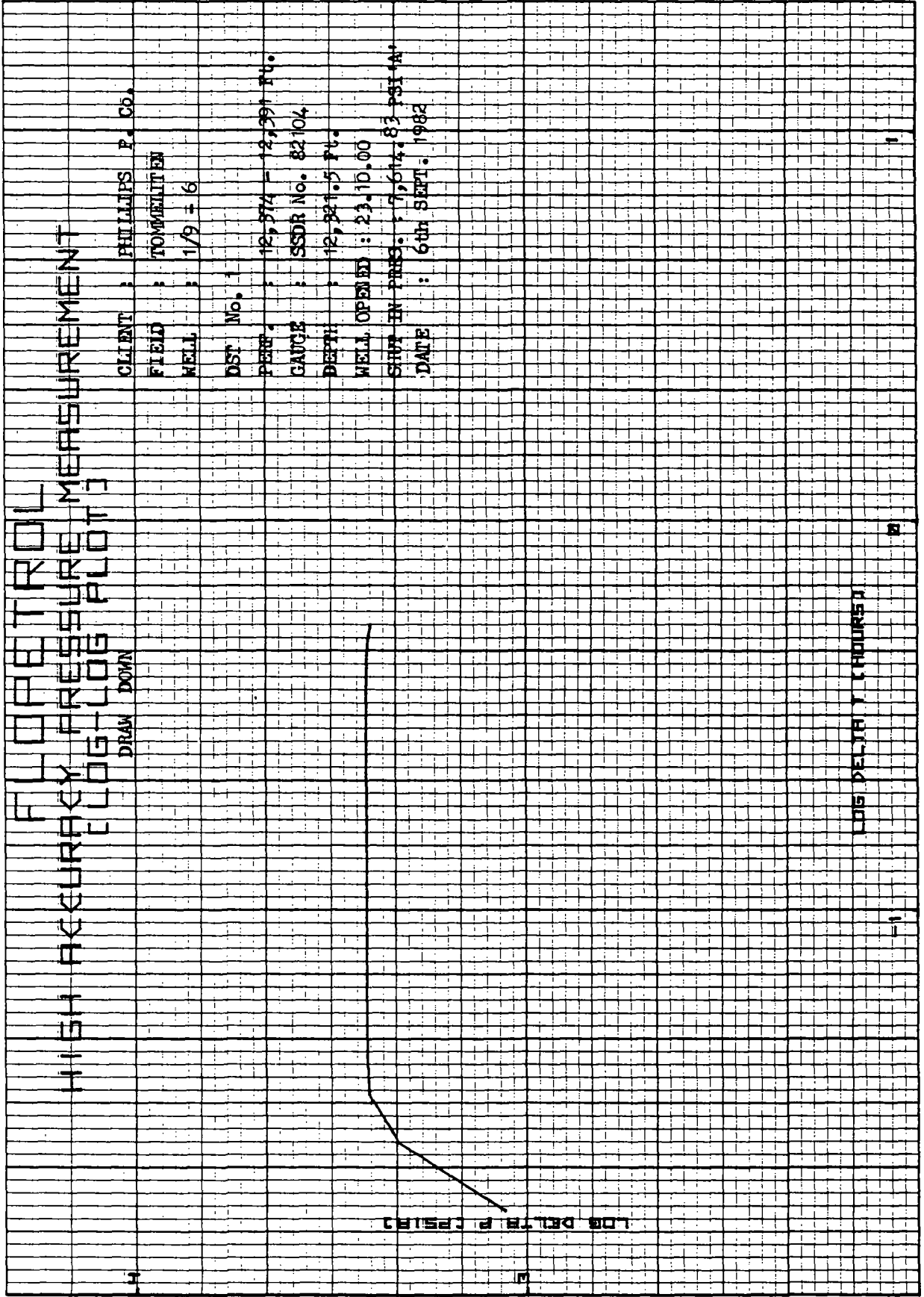
0 1 2 3 4 5 6 7 8 9 10 11 12

0

FOREFRONT  
 HIGH ACCURACY PRESSURE MEASUREMENT  
 NEAR PLOT  
 GRADIENT STOPS

CLIENT : PHILLIPS P. Co.  
 FIELD : TOMBLITS  
 WELL : T/9-L-6  
 DST No. : 1  
 PERM. : 12,374 - 12,391 Ft.  
 GAUGE : SSOR No. 82 0A  
 DEPTH : 12,321.5 Ft.  
 DATE : 7th SEPT, 1982

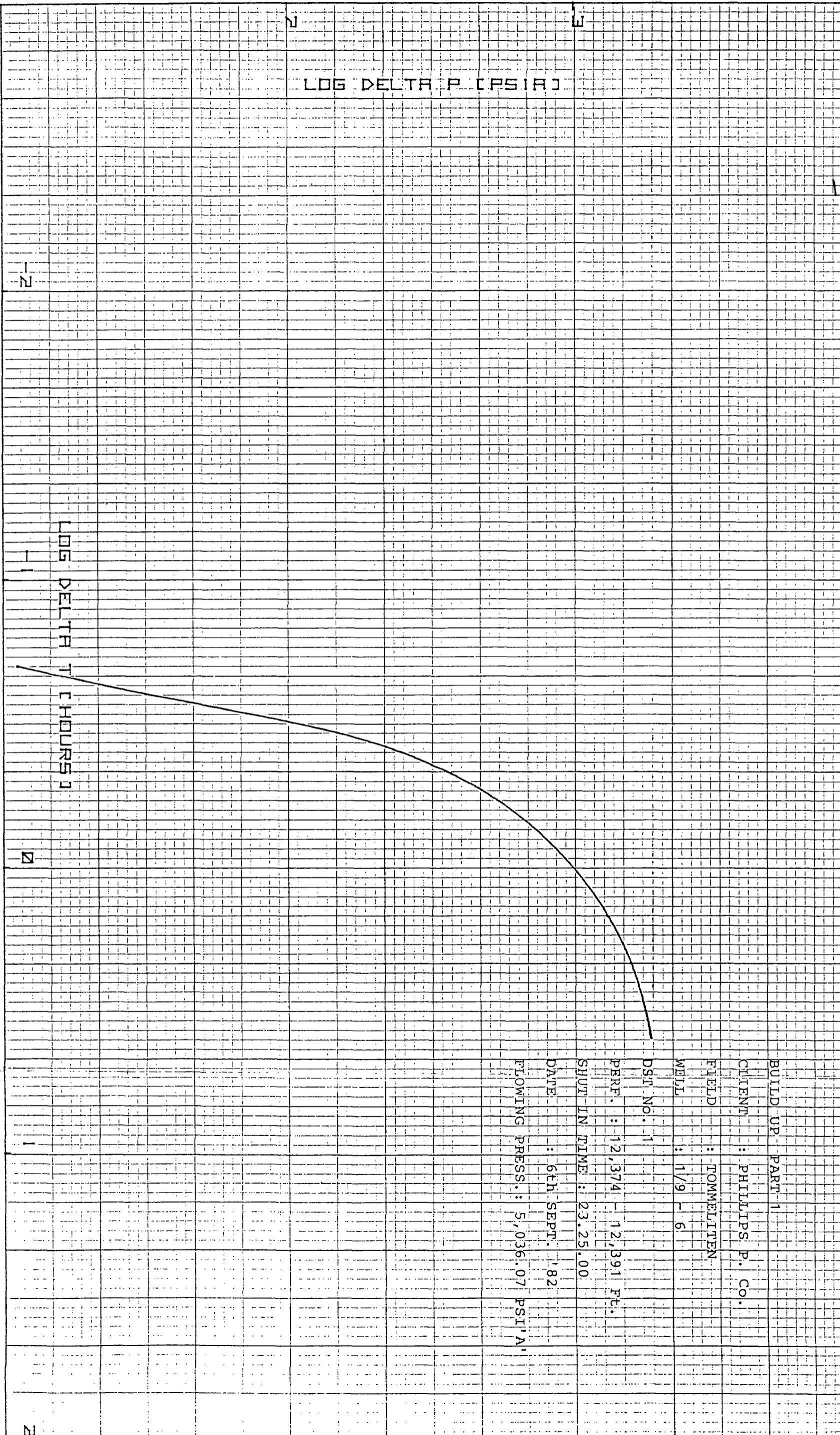




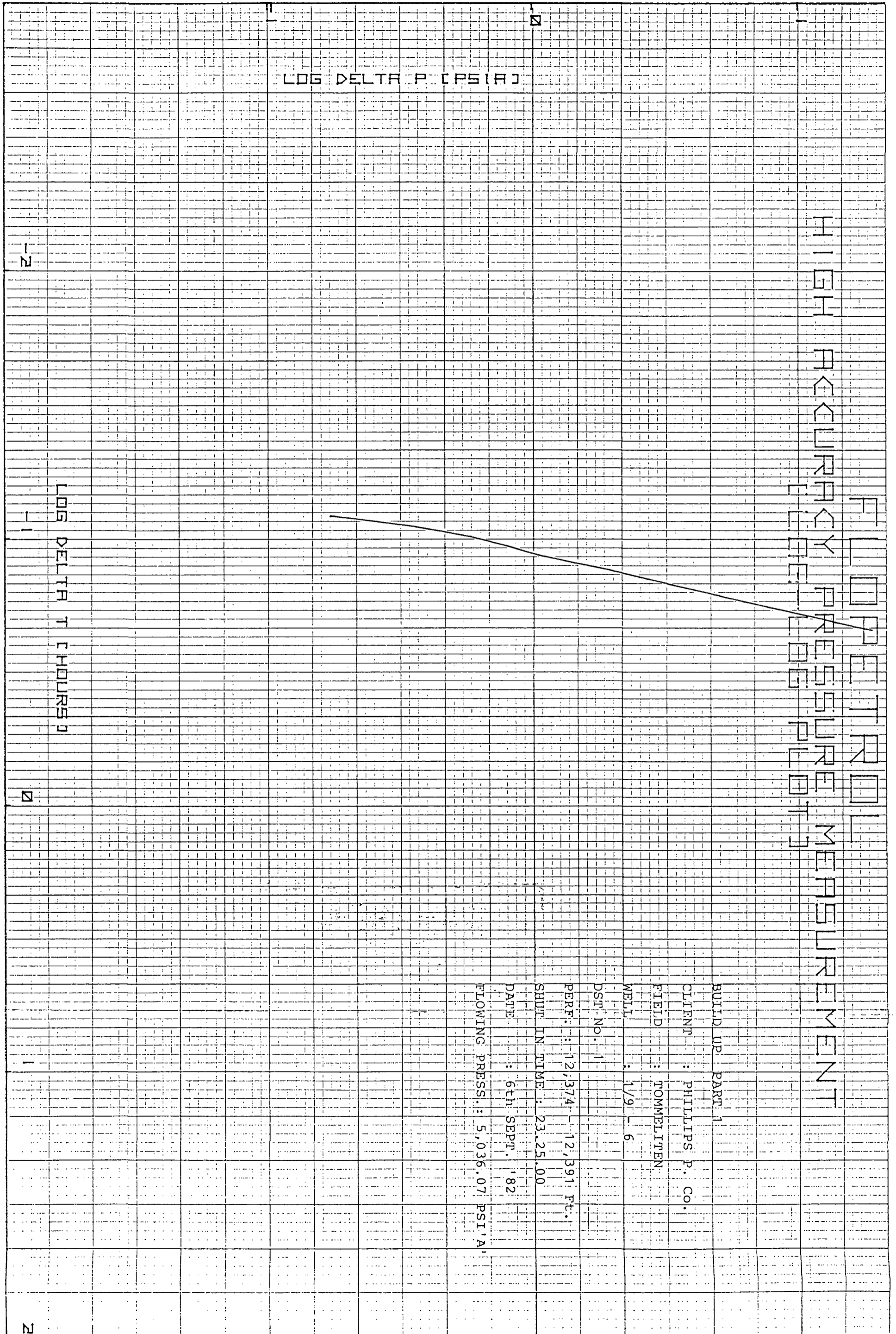
CLIENT : PHILLIPS P. Co.  
FIELD : TOMMELTEN  
WELL : 1/9 = 6  
DST No. :  
PERF. : 12,574 - 12,591 IN.  
GAUGE : SDR No. 82104  
DEPTH : 12,821.5 Ft.  
WELL OPENED : 23.10.00  
SHUT IN PRESS. : 7,614.83 PSI IN  
DATE : 6th SEPT. 1982

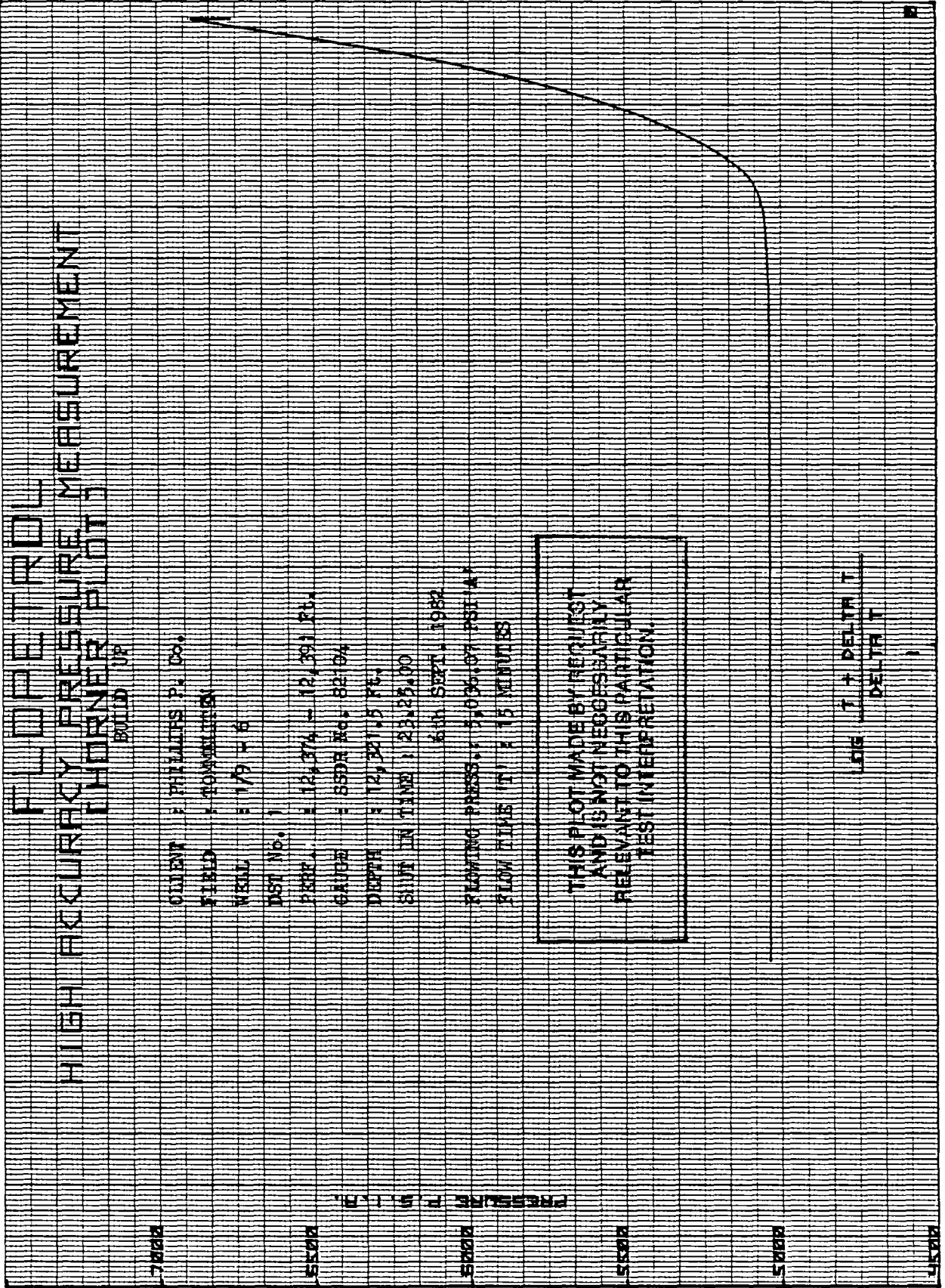


FLOWER OIL MEASUREMENT  
HIGH PRESSURE PERFORATION



BUILD UP PART 1  
CLIENT : PHILLIPS P. CO.  
FIELD : TOMMELTEN  
WELL : 1/9 - 6  
DSI No. 1  
PERF. : 12,374 - 12,391 Ft.  
SHUT IN TIME : 23.25.00  
DATE : 6th SEPT. '82  
FLOWING PRESS. : 5,036.07 PSI'A







FLOPETROL  
PRESSURE & TEMPERATURE CALCULATIONS

SECTION 2  
PAGE 1

TIME HR. MIN. SS PRESS. PSIA TEMP. DEG. F DEL. T (HOURS) LOG DEL. T DEL. P PSIA LOG DEL. P LOG T-DEL. T DEL. T REMARKS

6th Sept. 1982 5

Gauge : SDR No. 82104

IN LUBRICATOR

19.43.0	6.84									
19.44.0	25.55	50.9								
19.45.0	27.17									
19.46.0	27.30									
19.47.0	27.43									
19.48.0	27.56	50.2								
19.49.0	27.55									
19.50.0	27.75									
19.51.0	27.78									
19.52.0	27.77									
19.53.0	27.78									
19.54.0	27.92	49.5								
19.55.0	27.93									
19.56.0	27.96									
19.57.0	28.01									
19.58.0	27.98									
19.59.0	27.98	48.9								
20.0.0	28.00									
20.1.0	28.00									
20.2.0	25.60									
20.3.0	29.58									
20.4.0	29.58	48.6								
20.5.0	29.57									
20.6.0	29.54									
20.7.0	29.52									
20.8.0	29.47									
20.9.0	29.34	48.0								
20.10.0	29.33									
20.11.0	33.94									
20.12.0	34.00									
20.13.0	712.41	48.0								
20.14.0	1240.71									
20.15.0	1237.14									
20.16.0	1234.56									
20.17.0	1232.93									
20.18.0	1231.50									
20.19.0	1230.69	47.7								
20.20.0	1229.84									
20.21.0	1229.14									
20.22.0	1228.82									
20.23.0	1228.32									
20.24.0	1227.75	47.7								

Start press. test lubricator  
to 1,200 PSI



FLOPETROL  
PRESSURE & TEMPERATURE CALCULATIONS

SECTION 2  
PAGE 2

REMARKS

LOG T-DEL.T  
DEG.T

LOG DEL.P

DEL.P  
PSIA

LOG DEL.T

DEL.T  
(HOURS)

TEMP.  
DEG.F

PRESS.  
PSIA

TIME  
HR.MN.SS

TIME HR.MN.SS	PRESS. PSIA	TEMP. DEG.F	DEL.T (HOURS)	LOG DEL.T	DEL.P PSIA	LOG DEL.P	LOG T-DEL.T DEG.T	REMARKS
20.26.0	1226.77							
20.28.0	1225.50							
20.30.0	1225.50	47.5						Open lubricator valve
20.32.0	1225.50							
20.34.0	1249.79							
20.36.0	2011.23	47.3						Open EZ-tree valve
20.38.0	2012.51							
20.40.0	2029.33	47.3						Start R.I.H.
20.42.0	2049.72							
20.44.0	2076.97							
20.46.0	2104.07	48.2						
20.48.0	2119.87							
20.50.0	2151.37	48.8						
20.52.0	2209.87							
20.54.0	2273.06							
20.56.0	2374.75	46.4						
20.58.0	2507.12							
21.0.0	2656.90	52.5						
21.2.0	2810.18							
21.4.0	2962.62							
21.6.0	3112.37	60.4						
21.8.0	3258.52							
21.10.0	3402.35	69.8						
21.12.0	3536.72							
21.14.0	3668.21							
21.16.0	3800.05	80.8						
21.18.0	3931.20							
21.20.0	4063.96	91.4						
21.22.0	4195.47							
21.24.0	4326.73							
21.26.0	4456.76	102.6						
21.28.0	4591.33							
21.30.0	4722.63	113.4						
21.32.0	4851.43							
21.34.0	4976.47							
21.36.0	5103.61	124.5						
21.38.0	5230.15							
21.40.0	5354.98	136.9						
21.42.0	5476.70							
21.44.0	5598.20							
21.46.0	5719.88	149.7						
21.48.0	5841.26							

7

8

9

10



FLORENOL  
PRESSURE & TEMPERATURE CALCULATIONS

SECTION 2  
PAGE 3

REMARKS

TIME HR. MIN. SS PRESS. PSIA DEL.T. (HOURS) LOG DEL.T DEL.P. PSIA LOG DEL.P LOG T+DEL.T DEL.T

21.50.0 5563.09 162.3  
21.52.0 6081.41  
21.54.0 6200.01  
21.56.0 6320.07  
21.58.0 6442.79  
22.0.0 6566.44 194.0  
22.2.0 6690.58  
22.4.0 6814.68  
22.6.0 6939.86 209.1  
22.8.0 7069.04  
22.10.0 7207.43  
22.12.0 7344.76  
22.14.0 7502.43  
22.16.0 7645.00 234.1  
22.18.0 7731.04  
22.20.0 7718.95 248.2

11

22.22.0 7705.47  
22.24.0 7677.10  
22.26.0 7632.86 258.1  
22.28.0 7633.14  
22.30.0 7630.91 259.9  
22.32.0 7672.33  
22.34.0 7620.01  
22.36.0 7570.16 261.7  
22.38.0 7568.40  
22.40.0 7570.30 260.2  
22.42.0 7638.86  
22.44.0 7663.91  
22.46.0 7657.08 261.7  
22.48.0 7646.64  
22.50.0 7644.00 264.9  
22.52.0 7641.07  
22.54.0 7638.37  
22.56.0 7635.51 266.4  
22.58.0 7632.55  
23.0.0 7629.60 267.3  
23.2.0 7626.54  
23.4.0 7623.60  
23.6.0 7620.70 267.6  
23.8.0 7617.59  
23.9.0 7616.29  
23.9.30 7615.65 268.0

12

On depth, 12,321.5 Ft.  
13

14

FLOPETROL  
PRESSURE & TEMPERATURE CALCULATIONS

SECTION 2  
PAGE 4

REMARKS

LOG DEL.P LOG T+DEL.T  
PSIA DEL.T  
(HOURS)

TIME HR,MM,SS	PRESS. PSIA	TEMP. DEG.F	DEL.T (HOURS)	LOG DEL.T PSIA	LOG DEL.P PSIA	LOG T+DEL.T DEL.T	REMARKS
23.10.0	7614.83		0.0083	-2.0792	266.80		WELL OPENED
23.10.30	7348.03	268.0	0.0167	-1.7782	1142.40		23.10.0
23.11.0	6472.43	268.0	0.0250	-1.6021	2135.39		
23.11.30	5479.44	268.0	0.0333	-1.4771	2553.47		SHUT IN PFES.
23.12.0	5061.36	268.0	0.0417	-1.3802	2572.67		7614.83
23.12.30	5042.16	268.0	0.0500	-1.3010	2575.46		Choke size ; 8/64" adj,
23.13.0	5039.37	268.0	0.0583	-1.2341	2576.45		slowly increasing
23.13.30	5038.38	268.0	0.0667	-1.1761	2576.47		to 24/64" adj. at 23.12
23.14.0	5036.36	268.0	0.0750	-1.1249	2576.21		
23.14.30	5038.62	267.6	0.0833	-1.0792	2576.02		
23.15.0	5038.81	267.6	0.0917	-1.0378	2575.98		
23.15.30	5036.85	267.6	0.1000	-1.0000	2575.96		
23.16.0	5036.87	267.6	0.1083	-0.9652	2575.90		
23.16.30	5038.93	267.6	0.1167	-0.9331	2576.07		
23.17.0	5038.76	267.6	0.1250	-0.9031	2576.24		
23.17.30	5038.59	267.6	0.1333	-0.8751	2576.42		
23.18.0	5038.41	267.6	0.1417	-0.8487	2576.52		
23.18.30	5038.31	267.6	0.1500	-0.8239	2576.65		
23.19.0	5038.18	267.6	0.1583	-0.8004	2576.80		
23.19.30	5038.03	267.3	0.1667	-0.7782	2576.97		
23.20.0	5037.86	267.3	0.1750	-0.7570	2577.08		
23.20.30	5037.75	267.3	0.1833	-0.7368	2577.23		
23.21.0	5037.60	267.3	0.1917	-0.7175	2577.34		
23.21.30	5037.49	267.3	0.2000	-0.6990	2577.55		
23.22.0	5037.28	267.3	0.2083	-0.6812	2577.76		
23.22.30	5037.07	267.3	0.2167	-0.6642	2578.06		
23.23.0	5036.77	267.3	0.2250	-0.6478	2578.27		
23.23.30	5036.56	267.3	0.2333	-0.6320	2578.44		
23.24.0	5036.39	267.3	0.2417	-0.6168	2578.57		
23.24.30	5036.26	267.3	0.2500	-0.6021	2578.76		
23.25.0	5036.07	267.3	0.0083	-2.0792	0.17		SHUT IN TIME
23.25.30	5035.90	267.3	0.0167	-1.7782	0.30		23.25.0
23.26.0	5035.77	267.3	0.0250	-1.6021	0.34		
23.26.30	5035.73	267.3	0.0333	-1.4771	0.34		FLOWING PRES.
23.27.0	5035.73	267.3	0.0417	-1.3802	0.34		5036.07
23.27.30	5035.73	267.3	0.0500	-1.3010	0.30		
23.28.0	5035.77	267.3	0.0583	-1.2341	0.21		FLOW TIME T
23.28.30	5035.86	267.3	0.0667	-1.1761	0.17		(HOURS)
23.29.0	5035.90	267.3	0.0667	-1.1249	0.02		0.15.0 15
23.29.30	5036.05	267.3	0.0750	-1.0792	0.17		
23.30.0	5036.24	267.3	0.0833	-1.0378	0.17		
23.30.30	5036.43	267.3	0.0917	-1.0000	0.36		



FLOPETROL  
PRESSURE & TEMPERATURE CALCULATIONS

SECTION 2  
PAGE 5

REMARKS

TIME HR. MIN. SS	PRESS. PSIA	TEMP. DEG. F	DEL.T (HOURS)	LOG DEL.T	DEL.P PSIA	LOG DEL.P	LOG T-DEL.T DEL.T	REMARKS
23.31.0	5036.65	267.3	0.1000	-1.0000	0.58	-0.2366	0.5441	
23.31.30	5036.86	267.3	0.1083	-0.9652	0.79	-0.1024	0.5195	
23.32.0	5037.09	267.3	0.1167	-0.9331	1.02	0.0086	0.4973	
23.32.30	5037.46	267.3	0.1250	-0.9031	1.39	0.1430	0.4771	
23.33.0	5038.01	267.3	0.1333	-0.8751	1.94	0.2878	0.4586	
23.33.30	5038.56	267.3	0.1417	-0.8457	2.49	0.3962	0.4416	
23.34.0	5039.25	267.3	0.1500	-0.8239	3.18	0.5024	0.4260	
23.34.30	5040.08	267.3	0.1583	-0.8004	4.01	0.6031	0.4114	
23.35.0	5041.06	267.3	0.1667	-0.7782	4.99	0.6981	0.3979	
23.35.30	5042.21	267.3	0.1750	-0.7570	6.14	0.7882	0.3854	
23.36.0	5043.64	267.3	0.1833	-0.7368	7.57	0.8791	0.3736	
23.36.30	5045.30	267.3	0.1917	-0.7175	9.23	0.9652	0.3625	
23.37.0	5047.28	267.3	0.2000	-0.6990	11.21	1.0496	0.3522	
23.37.30	5049.44	267.3	0.2083	-0.6812	13.37	1.1261	0.3424	
23.38.0	5051.99	267.3	0.2167	-0.6642	15.92	1.2019	0.3332	
23.38.30	5054.91	267.3	0.2250	-0.6478	18.84	1.2751	0.3245	
23.39.0	5058.39	267.3	0.2333	-0.6320	22.32	1.3487	0.3163	
23.39.30	5062.55	267.4	0.2417	-0.6168	26.48	1.4229	0.3085	
23.40.0	5067.40	267.4	0.2500	-0.6021	31.33	1.4960	0.3010	
23.40.30	5073.18	267.4	0.2583	-0.5878	37.11	1.5695	0.2940	
23.41.0	5079.96	267.4	0.2667	-0.5740	43.89	1.6424	0.2872	
23.41.30	5087.76	267.4	0.2750	-0.5607	51.69	1.7134	0.2808	
23.42.0	5096.76	267.4	0.2833	-0.5477	60.69	1.7831	0.2747	
23.42.30	5106.84	267.4	0.2917	-0.5351	70.77	1.8498	0.2688	
23.43.0	5118.01	267.4	0.3000	-0.5229	81.94	1.9135	0.2632	
23.43.30	5130.01	267.4	0.3083	-0.5110	93.94	1.9729	0.2579	
23.44.0	5142.69	267.4	0.3167	-0.4994	106.62	2.0278	0.2527	
23.44.30	5156.07	267.4	0.3250	-0.4881	120.00	2.0792	0.2478	
23.45.0	5169.80	267.4	0.3333	-0.4771	133.73	2.1262	0.2430	
23.45.30	5183.83	267.4	0.3417	-0.4664	147.76	2.1696	0.2385	
23.46.0	5198.02	267.4	0.3500	-0.4559	161.95	2.2094	0.2341	
23.46.30	5212.33	267.4	0.3583	-0.4457	176.26	2.2462	0.2299	
23.47.0	5226.72	267.4	0.3667	-0.4357	190.65	2.2802	0.2258	
23.47.30	5241.06	267.4	0.3750	-0.4260	204.99	2.3117	0.2218	
23.48.0	5255.41	267.4	0.3833	-0.4164	219.34	2.3411	0.2181	
23.48.30	5269.80	267.4	0.3917	-0.4071	233.73	2.3687	0.2144	
23.49.0	5284.10	267.4	0.4000	-0.3979	248.03	2.3945	0.2109	
23.49.30	5298.37	267.6	0.4083	-0.3890	262.30	2.4188	0.2074	
23.50.0	5312.54	267.6	0.4167	-0.3802	276.47	2.4416	0.2041	
23.50.30	5326.61	267.6	0.4250	-0.3716	290.54	2.4632	0.2009	
23.51.0	5340.62	267.6	0.4333	-0.3632	304.55	2.4837	0.1978	
23.51.30	5354.44	267.6	0.4417	-0.3549	318.37	2.5029	0.1948	



FLUPEXROL  
PRESSURE & TEMPERATURE CALCULATIONS

SECTION 2  
PAGE 6

REMARKS

TIME IR.M.I.SS	PRESS. PSIA	TEMP. DEG.F	DEL.T (HOURS)	LOG DEL.T	DEL.P PSIA	LOG DEL.P	LOG T-DEL.T DEL.T
23.52.0	5368.17	267.6	0.4500	-0.3468	332.10	2.5213	0.1919
23.52.30	5381.83	267.6	0.4583	-0.3388	345.76	2.5388	0.1891
23.53.0	5395.33	267.6	0.4667	-0.3310	359.26	2.5554	0.1863
23.53.30	5408.74	267.6	0.4750	-0.3233	372.67	2.5713	0.1836
23.54.0	5422.02	267.6	0.4833	-0.3158	385.95	2.5865	0.1811
23.54.30	5435.20	267.8	0.4917	-0.3083	399.13	2.6011	0.1785
23.55.0	5448.14	267.8	0.5000	-0.3010	412.07	2.6150	0.1761
23.55.30	5461.13	267.8	0.5083	-0.2939	425.06	2.6285	0.1737
23.56.0	5473.92	267.8	0.5167	-0.2868	437.85	2.6413	0.1714
23.56.30	5486.65	267.8	0.5250	-0.2798	450.58	2.6538	0.1691
23.57.0	5499.30	267.8	0.5333	-0.2730	463.23	2.6658	0.1669
23.57.30	5511.75	267.8	0.5417	-0.2663	475.68	2.6773	0.1648
23.58.0	5524.12	267.8	0.5500	-0.2596	488.05	2.6885	0.1627
23.58.30	5536.36	267.8	0.5583	-0.2531	500.29	2.6992	0.1607
23.59.0	5548.47	267.8	0.5667	-0.2467	512.40	2.7096	0.1587
23.59.30	5560.45	268.0	0.5750	-0.2403	524.38	2.7196	0.1568
24.0.0	5572.37	268.0	0.5833	-0.2341	536.30	2.7294	0.1549
24.0.30	5572.37	268.0	0.5833	-0.2341	536.30	2.7294	0.1549
0.1.0	5584.17	268.0	0.5917	-0.2279	548.10	2.7389	0.1531
0.1.30	5595.83	268.0	0.6000	-0.2218	559.76	2.7480	0.1513
0.2.0	5607.32	268.0	0.6083	-0.2159	571.25	2.7568	0.1495
0.2.30	5618.80	268.0	0.6167	-0.2099	582.73	2.7655	0.1478
0.3.0	5630.04	268.0	0.6250	-0.2041	593.97	2.7738	0.1461
0.3.30	5641.17	268.0	0.6333	-0.1984	605.10	2.7818	0.1445
0.4.0	5652.17	268.0	0.6417	-0.1927	616.10	2.7897	0.1429
0.4.30	5663.11	268.0	0.6500	-0.1871	627.04	2.7973	0.1413
0.5.0	5673.86	268.2	0.6583	-0.1816	637.79	2.8047	0.1398
0.5.30	5684.54	268.2	0.6667	-0.1761	648.47	2.8119	0.1383
0.6.0	5695.08	268.2	0.6750	-0.1707	659.01	2.8189	0.1368
0.6.30	5705.55	268.2	0.6833	-0.1654	669.48	2.8257	0.1354
0.7.0	5715.94	268.2	0.6917	-0.1601	679.87	2.8324	0.1340
0.7.30	5726.11	268.2	0.7000	-0.1549	690.04	2.8389	0.1326
0.8.0	5736.30	268.2	0.7083	-0.1498	700.23	2.8452	0.1313
0.8.30	5746.39	268.2	0.7167	-0.1447	710.32	2.8515	0.1300
0.9.0	5756.31	268.2	0.7250	-0.1397	720.24	2.8575	0.1287
0.9.30	5766.23	268.2	0.7333	-0.1347	730.16	2.8634	0.1274
0.10.0	5776.10	268.3	0.7417	-0.1298	740.03	2.8692	0.1262
0.10.30	5785.79	268.3	0.7500	-0.1249	749.72	2.8749	0.1249
0.11.0	5795.36	268.3	0.7583	-0.1201	759.29	2.8804	0.1237
0.11.30	5804.85	268.3	0.7667	-0.1154	768.78	2.8858	0.1226
0.12.0	5814.15	268.3	0.7750	-0.1107	778.08	2.8910	0.1214
0.12.30	5823.47	268.3	0.7833	-0.1061	787.40	2.8962	0.1203

7th Sept. 1982

FLOPETROL  
PRESSURE & TEMPERATURE CALCULATIONS

SECTION 2  
PAGE 7

TIME HR. MM. SS	PRESS. PSIA	TEMP. DEG. F	DEL. T (HOURS)	LOG DEL. T	DEL. P PSIA	LOG DEL. P	LOG T-DEL. T DEL. T	REMARKS
0.12.30	5832.62	268.3	0.7917	-0.1015	796.55	2.9012	0.1192	
0.13.0	5841.71	268.3	0.8000	-0.0969	805.64	2.9061	0.1161	
0.13.30	5850.80	268.3	0.8083	-0.0924	814.73	2.9110	0.1170	
0.14.0	5859.73	268.3	0.8167	-0.0880	823.66	2.9157	0.1160	
0.14.30	5868.63	268.3	0.8250	-0.0835	832.56	2.9204	0.1150	
0.15.0	5877.44	268.3	0.8333	-0.0792	841.37	2.9250	0.1139	
0.15.30	5886.14	268.3	0.8417	-0.0749	850.07	2.9295	0.1129	
0.16.0	5894.83	268.3	0.8500	-0.0706	858.76	2.9339	0.1120	
0.16.30	5903.25	268.3	0.8583	-0.0663	867.18	2.9381	0.1110	
0.17.0	5911.62	268.3	0.8667	-0.0621	875.55	2.9423	0.1101	
0.17.30	5920.06	268.3	0.8750	-0.0580	883.99	2.9464	0.1091	
0.18.0	5928.28	268.3	0.8833	-0.0539	892.21	2.9505	0.1082	
0.18.30	5936.49	268.3	0.8917	-0.0498	900.42	2.9544	0.1073	
0.19.0	5944.58	268.3	0.9000	-0.0458	908.51	2.9583	0.1065	
0.19.30	5952.64	268.5	0.9083	-0.0418	916.57	2.9622	0.1056	
0.20.0	5960.64	268.5	0.9167	-0.0378	924.57	2.9659	0.1047	
0.20.30	5968.53	268.5	0.9250	-0.0339	932.46	2.9696	0.1039	
0.21.0	5976.38	268.5	0.9333	-0.0300	940.31	2.9733	0.1031	
0.21.30	5984.10	268.5	0.9417	-0.0261	948.03	2.9768	0.1023	
0.22.0	5991.74	268.5	0.9500	-0.0223	955.67	2.9803	0.1015	
0.22.30	5999.38	268.5	0.9583	-0.0185	963.31	2.9838	0.1007	
0.23.0	6006.91	268.5	0.9667	-0.0147	970.84	2.9871	0.0999	
0.23.30	6014.39	268.5	0.9750	-0.0110	978.32	2.9905	0.0991	
0.24.0	6021.79	268.5	0.9833	-0.0073	985.72	2.9938	0.0984	
0.24.30	6029.07	268.5	0.9917	-0.0036	993.00	2.9969	0.0976	
0.25.0	6036.34	268.5	1.0000	-0.0000	1000.27	3.0001	0.0969	
0.26.0	6050.60	268.5	1.0167	0.0072	1014.53	3.0063	0.0955	
0.27.0	6064.76	268.5	1.0333	0.0142	1028.69	3.0123	0.0941	
0.28.0	6078.46	268.5	1.0500	0.0212	1042.39	3.0180	0.0928	
0.29.0	6092.18	268.7	1.0667	0.0280	1056.11	3.0237	0.0914	
0.30.0	6105.36	268.7	1.0833	0.0348	1069.29	3.0291	0.0902	
0.31.0	6118.35	268.7	1.1000	0.0414	1082.28	3.0343	0.0889	
0.32.0	6131.11	268.7	1.1167	0.0479	1095.04	3.0394	0.0877	
0.33.0	6143.76	268.7	1.1333	0.0544	1107.69	3.0444	0.0866	
0.34.0	6156.11	268.7	1.1500	0.0607	1120.04	3.0492	0.0854	
0.35.0	6168.21	268.7	1.1667	0.0669	1132.14	3.0539	0.0843	
0.36.0	6180.18	268.7	1.1833	0.0731	1144.11	3.0585	0.0832	
0.37.0	6191.81	268.7	1.2000	0.0792	1155.74	3.0629	0.0822	
0.38.0	6203.31	268.7	1.2167	0.0852	1167.24	3.0672	0.0812	
0.39.0	6214.58	268.9	1.2333	0.0911	1178.51	3.0713	0.0802	
0.40.0	6225.67	268.9	1.2500	0.0969	1189.60	3.0754	0.0792	
0.41.0	6236.60	268.9	1.2667	0.1027	1200.53	3.0794	0.0782	



FLOPETROL  
PRESSURE & TEMPERATURE CALCULATIONS

SECTION 2  
PAGE 8

TIME HR. MIN. SS	PRESS. PSIA	TEMP. DEG. F	DEL. T (HOURS)	LOG DEL. T	DEL. P PSIA	LOG DEL. P	LOG T-DEL. T LOG T	REMARKS
0.42. 0	6247.31	268.9	1.2833	0.1083	1211.24	3.0832	0.0773	
0.43. 0	6257.89	268.9	1.3000	0.1139	1221.82	3.0870	0.0764	
0.44. 0	6268.26	268.9	1.3167	0.1195	1232.19	3.0907	0.0755	
0.45. 0	6278.44	268.9	1.3333	0.1249	1242.37	3.0943	0.0746	
0.46. 0	6288.46	268.9	1.3500	0.1303	1252.39	3.0977	0.0738	
0.47. 0	6298.32	268.9	1.3667	0.1357	1262.25	3.1011	0.0730	
0.48. 0	6307.92	268.9	1.3833	0.1409	1271.85	3.1044	0.0721	
0.49. 0	6317.42	268.9	1.4000	0.1461	1281.35	3.1077	0.0714	
0.50. 0	6326.79	268.9	1.4167	0.1513	1290.72	3.1108	0.0706	
0.51. 0	6335.98	268.9	1.4333	0.1563	1299.91	3.1139	0.0698	
0.52. 0	6345.01	268.9	1.4500	0.1614	1308.94	3.1169	0.0691	
0.53. 0	6353.86	268.9	1.4667	0.1663	1317.79	3.1198	0.0684	
0.54. 0	6362.67	268.9	1.4833	0.1712	1326.60	3.1227	0.0676	
0.55. 0	6371.23	268.9	1.5000	0.1761	1335.16	3.1255	0.0669	
0.56. 0	6379.71	268.9	1.5167	0.1809	1343.64	3.1283	0.0663	
0.57. 0	6388.01	268.9	1.5333	0.1856	1351.94	3.1310	0.0656	
0.58. 0	6396.23	268.9	1.5500	0.1903	1360.16	3.1336	0.0649	
0.59. 0	6404.36	268.9	1.5667	0.1950	1368.29	3.1362	0.0643	
1. 0. 0	6412.25	268.9	1.5833	0.1996	1376.18	3.137	0.0637	
1. 1. 0	6419.96	268.9	1.6000	0.2041	1383.89	3.1411	0.0631	
1. 2. 0	6427.70	268.9	1.6167	0.2086	1391.63	3.1435	0.0624	
1. 3. 0	6435.32	268.9	1.6333	0.2131	1399.25	3.1459	0.0619	
1. 4. 0	6442.81	268.9	1.6500	0.2175	1406.74	3.1482	0.0613	
1. 5. 0	6450.13	268.9	1.6667	0.2218	1414.06	3.1505	0.0607	
1. 6. 0	6457.28	268.9	1.6833	0.2262	1421.21	3.1527	0.0601	
1. 7. 0	6464.34	268.9	1.7000	0.2304	1428.27	3.1548	0.0596	
1. 8. 0	6471.32	268.9	1.7167	0.2347	1435.25	3.1569	0.0590	
1. 9. 0	6478.23	268.9	1.7333	0.2389	1442.16	3.1590	0.0585	
1.10. 0	6484.89	268.9	1.7500	0.2430	1448.82	3.1610	0.0580	
1.11. 0	6491.46	268.9	1.7667	0.2472	1455.39	3.1630	0.0575	
1.12. 0	6497.99	268.9	1.7833	0.2512	1461.92	3.1649	0.0570	
1.13. 0	6504.31	268.9	1.8000	0.2553	1468.24	3.1668	0.0565	
1.14. 0	6510.65	268.9	1.8167	0.2593	1474.58	3.1687	0.0560	
1.15. 0	6516.88	268.9	1.8333	0.2632	1480.81	3.1705	0.0555	
1.16. 0	6522.83	268.9	1.8500	0.2672	1486.76	3.1722	0.0550	
1.17. 0	6528.72	268.9	1.8667	0.2711	1492.65	3.1740	0.0546	
1.18. 0	6534.66	268.9	1.8833	0.2749	1498.59	3.1757	0.0541	
1.19. 0	6540.44	268.9	1.9000	0.2788	1504.37	3.1774	0.0537	
1.20. 0	6546.29	268.9	1.9167	0.2825	1510.22	3.1790	0.0532	
1.21. 0	6551.90	268.9	1.9333	0.2863	1515.83	3.1807	0.0528	
1.22. 0	6557.43	268.9	1.9500	0.2900	1521.36	3.1822	0.0524	
1.23. 0	6562.87	268.9	1.9667	0.2937	1526.80	3.1838	0.0520	



FLOPETROL  
PRESSURE & TEMPERATURE CALCULATIONS

SECTION 2  
PAGE 9  
REMARKS

TIME HR:MIN:SS	PRESS. PSIA	TEMP. DEG.F	DEL.T (HOURS)	LOG DEL.T	DEL.P PSIA	LOG DEL.P	LOG T-DEL.T DEL.T	REMARKS
1.24.0	6568.38	268.9	1.9833	0.2974	1532.31	3.1853	0.0516	
1.25.0	6573.65	268.9	2.0000	0.3010	1537.58	3.1868	0.0512	
1.26.0	6578.92	268.9	2.0167	0.3046	1542.85	3.1883	0.0508	
1.27.0	6584.03	268.9	2.0333	0.3082	1548.01	3.1898	0.0504	
1.28.0	6589.08	268.9	2.0500	0.3118	1553.01	3.1912	0.0500	
1.29.0	6593.98	268.9	2.0667	0.3153	1557.61	3.1925	0.0496	
1.30.0	6599.02	268.9	2.0833	0.3188	1562.95	3.1939	0.0492	
1.31.0	6603.89	268.9	2.1000	0.3222	1567.82	3.1953	0.0488	
1.32.0	6608.70	268.9	2.1167	0.3257	1572.63	3.1966	0.0485	
1.33.0	6613.35	268.9	2.1333	0.3291	1577.28	3.1979	0.0481	
1.34.0	6618.05	269.1	2.1500	0.3324	1581.58	3.1992	0.0478	
1.35.0	6622.77	269.1	2.1667	0.3358	1586.70	3.2005	0.0474	
1.36.0	6627.23	269.1	2.1833	0.3391	1591.16	3.2017	0.0471	
1.37.0	6631.65	269.1	2.2000	0.3424	1595.58	3.2029	0.0467	
1.38.0	6636.04	269.1	2.2167	0.3457	1599.97	3.2041	0.0464	
1.39.0	6640.50	269.1	2.2333	0.3490	1604.43	3.2053	0.0461	
1.40.0	6644.64	269.1	2.2500	0.3522	1608.57	3.2064	0.0458	
1.41.0	6649.00	269.1	2.2667	0.3554	1612.93	3.2076	0.0454	
1.42.0	6653.03	269.1	2.2833	0.3586	1616.96	3.2087	0.0451	
1.43.0	6657.09	269.1	2.3000	0.3617	1621.02	3.2098	0.0448	
1.44.0	6661.29	269.1	2.3167	0.3649	1625.22	3.2109	0.0445	
1.45.0	6665.17	269.1	2.3333	0.3680	1629.10	3.2119	0.0442	
1.46.0	6669.08	269.1	2.3500	0.3711	1633.01	3.2130	0.0439	
1.47.0	6672.96	269.1	2.3667	0.3741	1636.89	3.2140	0.0436	
1.48.0	6676.83	269.1	2.3833	0.3772	1640.76	3.2150	0.0433	
1.49.0	6680.50	269.1	2.4000	0.3802	1644.43	3.2160	0.0430	
1.50.0	6684.32	269.1	2.4167	0.3832	1648.25	3.2170	0.0428	
1.51.0	6687.84	269.1	2.4333	0.3862	1651.77	3.2179	0.0425	
1.52.0	6691.55	269.1	2.4500	0.3892	1655.48	3.2189	0.0422	
1.53.0	6695.23	269.1	2.4667	0.3921	1659.16	3.2199	0.0419	
1.54.0	6698.62	269.1	2.4833	0.3950	1662.55	3.2208	0.0417	
1.55.0	6702.44	269.1	2.5000	0.3979	1666.37	3.2218	0.0414	
1.56.0	6706.05	269.1	2.5167	0.4008	1669.98	3.2227	0.0411	
1.57.0	6709.48	269.1	2.5333	0.4037	1673.41	3.2236	0.0409	
1.58.0	6712.71	269.1	2.5500	0.4065	1676.64	3.2244	0.0406	
1.59.0	6715.95	269.1	2.5667	0.4094	1679.88	3.2253	0.0404	
2.0.0	6719.41	269.1	2.5833	0.4122	1683.34	3.2262	0.0401	
2.5.0	6735.03	269.1	2.6667	0.4260	1698.96	3.2302	0.0389	
2.10.0	6749.87	269.1	2.7500	0.4393	1713.80	3.2340	0.0378	
2.15.0	6763.63	269.1	2.8333	0.4523	1727.56	3.2374	0.0367	
2.20.0	6776.70	269.1	2.9167	0.4649	1740.63	3.2407	0.0357	
2.25.0	6788.86	269.1	3.0000	0.4771	1752.79	3.2437	0.0348	



FLOPETROL

PRESSURE & TEMPERATURE CALCULATIONS

SECTION 2  
PAGE 10

TIME HR. MN. SS	PRESS. PSIA	TEMP. DEG. F.	DEL. T (HOURS)	LOG DEL. T	DEL. P PSIA	LOG DEL. P	LOG T + DEL. T DEL. T	REMARKS
2.30.0	6800.39	256.6	3.0833	0.4890	1764.32	3.2466	0.0339	22
2.35.0	6811.42	269.1	3.1667	0.5006	1775.35	3.2493	0.0330	23
2.40.0	6821.65	269.1	3.2500	0.5119	1785.58	3.2518	0.0322	
2.45.0	6831.49	269.1	3.3333	0.5229	1795.42	3.2542	0.0314	
2.50.0	6840.34	269.1	3.4167	0.5336	1804.27	3.2563	0.0307	
2.55.0	6848.49	269.1	3.5000	0.5441	1812.42	3.2583	0.0300	24
3.0.0	6856.27	269.1	3.5833	0.5543	1820.20	3.2601	0.0293	
3.5.0	6863.90	269.1	3.6667	0.5643	1827.83	3.2619	0.0286	
3.10.0	6872.60	269.1	3.7500	0.5740	1836.53	3.2640	0.0280	
3.15.0	6879.51	269.1	3.8333	0.5836	1843.44	3.2656	0.0274	
3.20.0	6885.83	269.1	3.9167	0.5929	1849.76	3.2671	0.0269	
3.25.0	6891.79	269.1	4.0000	0.6021	1855.72	3.2685	0.0263	
3.26.0	6873.09							End of build up
3.26.30	6878.49							Start P.O.O.H.
3.27.0	6863.14							
3.27.30	6838.78							
3.28.0	6814.64							
3.28.30	6789.89							
3.29.0	6765.53							
3.29.30	6741.37	267.6						
3.30.0	6717.89							
3.30.30	6694.28							
3.31.0	6670.72							
3.31.30	6654.68							
3.32.0	6644.67							
3.32.30	6644.31							
3.33.0	6645.84							
3.33.30	6647.06							
3.34.0	6648.21							
3.34.30	6649.16							
3.35.0	6650.02	260.8						1st gradient stop
3.35.30	6651.08							at 11,786 Ft.
3.36.0	6651.88							
3.36.30	6652.77							
3.37.0	6653.34							
3.37.30	6654.18							
3.38.0	6654.75							
3.38.30	6655.49							
3.39.0	6656.16							
3.39.30	6656.77	256.6						
3.40.0	6657.54							
3.40.30	6658.34							

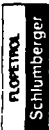
FLOPETROL  
PRESSURE & TEMPERATURE CALCULATIONS

REMARKS [

TIME HR./MIN.	PRSS. PSIA	TEMP. DEG.F	DEL.T (HOURS)	LOG DEL.T	DEL.P PSIA	LOG DEL.P	LOG T+DEL.T DEL.T	REMARKS
3.41.0	6659.13							
3.41.30	6659.70							
3.42.0	6660.50							
3.42.30	6661.14							
3.43.0	6661.99							
3.43.30	6662.58							
3.44.0	6663.37							
3.44.30	6664.11	254.5						
3.45.0	6664.98							
3.45.30	6665.62							
3.46.0	6646.65							
3.46.30	6622.02							
3.47.0	6595.77							
3.47.30	6568.71							
3.48.0	6538.69							
3.48.30	6510.31							
3.49.0	6482.66							
3.49.30	6455.06	252.9						
3.50.0	6430.38							
3.50.30	6426.51							
3.51.0	6427.52							
3.51.30	6428.44							
3.52.0	6429.15							
3.52.30	6429.80							
3.53.0	6430.25							
3.53.30	6430.67							
3.54.0	6430.99							
3.54.30	6431.46	249.6						
3.55.0	6431.94							
3.55.30	6432.41							
3.56.0	6432.92							
3.56.30	6433.43							
3.57.0	6433.97							
3.57.30	6434.48							
3.58.0	6434.97							
3.58.30	6435.55							
3.59.0	6436.09							
3.59.30	6436.62	247.8						
4.0.0	6437.25							
4.0.30	6437.85							
4.1.0	6437.24							
4.1.30	6414.99							

2nd gradient stop  
at 11,321 Ft.

P.O.O.H.



FLOPETROL  
PRESSURE & TEMPERATURE CALCULATIONS

SECTION 2  
PAGE 12

TIME (HR.)	MAN. ASS.	PRESS. (PSIA)	TEMP. (DEG. F)	DEL.T. (HOURS)	LOG DEL.T.	DEL.P. (PSIA)	LOG DEL.P.	LOG T-DEL.T. DEL.T.	REMARKS
4. 2. 0		6390.00							
4. 2. 30		6365.16							
4. 3. 0		6340.23							
4. 3. 30		6315.58							
4. 4. 0		6291.17							
4. 4. 30		6266.61	246.6						
4. 5. 0		6242.27							
4. 5. 30		6218.36							
4. 6. 0		6201.91							
4. 6. 30		6199.83							
4. 7. 0		6201.62							
4. 7. 30		6203.34							
4. 8. 0		6204.93							
4. 8. 30		6206.42							
4. 9. 0		6207.86							
4. 9. 30		6209.19							
4. 10. 0		6210.53	243.9						
4. 10. 30		6211.80							
4. 11. 0		6213.08							
4. 11. 30		6214.28							
4. 12. 0		6215.52							
4. 12. 30		6216.72							
4. 13. 0		6217.86							
4. 13. 30		6219.05							
4. 14. 0		6220.19							
4. 14. 30		6221.33							
4. 15. 0		6222.47	242.2						
4. 15. 30		6223.61							
4. 16. 0		6224.75							P.O.O.H.
4. 16. 30		6225.80							
4. 17. 0		6213.39							
4. 17. 30		6189.33							
4. 18. 0		6165.19							
4. 18. 30		6141.00							
4. 19. 0		6116.77							
4. 19. 30		6092.81							
4. 20. 0		6068.85	241.2						
4. 20. 30		6045.87							
4. 21. 0		6023.21							
4. 21. 30		6001.74							
4. 22. 0		5999.66							
4. 22. 30		6001.98							

3rd gradient stop  
at 10,821 Ft.

4th gradient stop  
at 10,321 Ft.



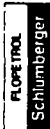
FLOPETROL  
PRESSURE & TEMPERATURE CALCULATIONS

SECTION 2  
PAGE 13

TIME HR:MIN:SS	PRESS. PSIA	TEMP. DEG. F	DEL.T (HOURS)	LOG DEL.T	DEL.P PSIA	LOG DEL.P	LOG T+DEL.T DEL.T	REMARKS
4.23.0	6004.13							
4.23.30	6006.09							
4.24.0	6007.77							
4.24.30	6009.32	236.5						
4.25.0	6010.80							
4.25.30	6012.22							
4.26.0	6013.50							
4.26.30	6014.74							
4.27.0	6015.95							
4.27.30	6017.22							
4.28.0	6018.37							
4.28.30	6019.55							
4.29.0	6020.65							
4.29.30	6021.83	233.4						
4.30.0	6022.90							
4.30.30	6023.99							
4.31.0	6025.10							
4.31.30	6026.20							
4.32.0	6027.29							
4.32.30	6010.99							
4.33.0	5983.45							
4.33.30	5955.87							
4.34.0	5928.35							
4.34.30	5900.89							
4.35.0	5873.54							
4.36.0	5821.10							
4.38.0	5698.12							
4.40.0	5577.32							
4.42.0	5454.88							
4.44.0	5332.14							
4.46.0	5205.28							
4.48.0	5071.98							
4.50.0	4938.05							
4.52.0	4801.01							
4.54.0	4661.87							
4.56.0	4517.60							
4.58.0	4366.40							
5.0.0	4218.36							
5.2.0	4071.05							
5.4.0	3922.19							
5.6.0	3771.26							
5.8.0	3622.70							

P.O.O.H.





FLOPETROL  
PRESSURE & TEMPERATURE CALCULATIONS

SECTION 2  
PAGE 14

TIAL HP.MRSS	PRESS. PSIA	TEMP. DEG.F	DEL.T (HOURS)	LOG DEL.T	DEL.P PSIA	LOG DEL.P	LOG T-DEL.T DEL.T	REMARKS
5.10.0	3514.54	142.2						
5.12.0	3392.25							
5.14.0	3280.77							
5.16.0	3168.36	142.2						
5.18.0	3046.29							
5.20.0	2956.14	142.2						
5.22.0	2839.83							
5.24.0	2746.55							
5.26.0	2621.96	106.9						
5.28.0	2495.73							
5.30.0	2367.28	97.0						
5.32.0	2238.29							
5.34.0	2145.40							
5.36.0	2046.11	86.5						
5.38.0	1915.53							
5.40.0	1785.60	77.5						
5.42.0	1691.35							
5.44.0	1650.54							
5.46.0	1603.16	65.5						
5.48.0	1573.77							
5.50.0	1580.55	57.7						
5.52.0	1592.15							
5.54.0	1603.14							
5.56.0	1637.64	54.1						
5.58.0	1623.96							
6.0.0	13.98	52.2						
6.2.0	12.71							
6.4.0	12.52							
6.6.0	12.05	50.7						
6.8.0	27.85							
6.10.0	13.09	49.8						
6.12.0	6.15							
6.14.0	6.20							
6.16.0	6.02	49.5						
6.18.0	6.16							
6.20.0	6.75	49.5						
6.22.0	8.77							
6.24.0	13.06							
6.26.0	18.11	49.8						
6.28.0	24.83	49.6						

GAUGES TO SURFACE

DISCONNECT BATTERY PACK

30

31

32

33

**FLOPETROL**

Client : PHILLIPS P. Co.

Section : 3

Base : STAVANGER

Field : TOMMELITEN

Page : 1

Well : 179 - 6

Report N°:

SEQUENCE OF EVENTS

DATE	TIME	OPERATION
6thSEP.82	18.15	Start rig up for wireline with bottom hole gauges.
	19.10	T.P.T. No. 81238 connected to toolstring.
	19.19	Battery pack connected on SSCR No. 82104 .
		SSDR set at 30 sec. sample rate.
	19.22	Gauge operation checked, O.K.
	19.26	SSDR connected to toolstring.
	19.46	Gauges in lubricator.
	20.04	Wireline head connected.
	20.12	Pressure test lubricator to 1,200 PSI
	20.30	Open lubricator valve.
	20.35	Open EZ - tree valve.
	20.40	Start R.I.H.
	22.45	Gauges on depth, TPT at 12,304.5 Ft. and SSCR at 12,321.5 Ft.
	23.10	Open well on 8/64" adj. choke. Increase slowly.
	23.12	Well flowing on 24/64" adj. choke.
	23.25	Well shut in at choke manifold.
7thSEP.82	03.25	Start P.O.O.H.
	03.34	1st gradient stop. TPT at 11,769 Ft. and SSCR at 11,786 Ft.
	03.45	Continue P.O.O.H.
	03.51	2nd gradient stop. TPT at 11,304 Ft. and SSCR at 11,921 Ft.
	04.00	Continue P.O.O.H.
	04.07	3rd gradient stop. TPT at 10,804 Ft. and SSCR at 10,821 Ft.
	04.16	Continue P.O.O.H.
	04.22	4th gradient stop. TPT at 10,304 Ft. and SSCR at 10,321 Ft.
	04.32	Continue P.O.O.H.
	05.51	Gauges to surface.
	06.30	Disconnect battery on SSCR.

\*\*\*\*\*  
\* LISTING OF ALL DATA \*  
\* \* \* \* \*  
\* ON TAPE \*  
\* \* \* \* \*  
\*\*\*\*\*

TEMPERATURE IN DEG F  
PRESSURE IN PSI A  
TIME IN HH.MM SS

5  
Schlumberger

19.4230	9.52	19.4300	6.84	19.4330	13.76	19.4400	25.55	19.4400Temp	50.9
19.4430	27.00	19.4500	27.17	19.4530	27.22	19.4600	27.30	19.4630	27.37
19.4700	27.43	19.4730	27.52	19.4800	27.56	19.4830	27.63	19.4900	27.65
19.4900Temp	50.2	19.4930	27.71	19.5000	27.75	19.5030	27.76	19.5100	27.78
19.5130	27.79	19.5200	27.77	19.5230	27.76	19.5300	27.78	19.5330	27.90
19.5400	27.92	19.5430	27.92	19.5400Temp	49.5	19.5500	27.93	19.5530	27.95
19.5600	27.96	19.5630	27.96	19.5700	28.01	19.5730	27.99	19.5800	27.98
19.5830	27.98	19.5900	27.98	19.5900Temp	48.9	19.5930	27.95	20.0000	28.00
20.0030	28.05	20.0100	28.00	20.0130	23.82	20.0200	25.60	20.0300	29.76
20.0300	29.58	20.0330	29.55	20.0400	29.58	20.0400Temp	48.6	20.0430	29.58

6  
FILE

20.0500	29.57	20.0530	29.54	20.0600	29.54	20.0630	29.53	20.0700	29.52
20.0730	29.50	20.0800	29.47	20.0830	29.35	20.0900	29.34	20.0900Temp	48.0
20.0930	29.33	20.1000	29.33	20.1030	32.69	20.1100	33.94	20.1130	33.65
20.1200	34.00	20.1230	62.12	20.1300	712.41	20.1330	1245.69	20.1400	1240.71
20.1400Temp	46.0	20.1430	1238.85	20.1500	1237.14	20.1530	1235.81	20.1600	1234.56
20.1630	1233.73	20.1700	1232.93	20.1730	1232.12	20.1800	1231.50	20.1830	1231.16
20.1900	1230.69	20.1900Temp	47.7	20.1930	1230.12	20.2000	1229.84	20.2030	1229.48
20.2100	1229.14	20.2130	1228.99	20.2200	1228.82	20.2230	1228.54	20.2300	1228.32
20.2330	1228.01	20.2400	1227.75	20.2400Temp	47.7	20.2430	1227.43	20.2500	1227.36
20.2530	1226.93	20.2600	1226.77	20.2630	1226.66	20.2700	1226.36	20.2730	1225.97

7  
FILE

20.2800	1225.50	20.2830	1225.49	20.2900	1224.81	20.2900Temp	47.5	20.2930	1225.50
20.3000	1225.50	20.3030	1225.50	20.3100	1225.50	20.3130	1225.50	20.3200	1225.50
20.3230	1225.50	20.3300	1225.50	20.3330	1225.50	20.3400	1249.79	20.3400Temp	47.3
20.3430	1286.03	20.3500	2011.67	20.3530	2011.06	20.3600	2011.23	20.3630	2011.65
20.3700	2011.93	20.3730	2012.22	20.3800	2012.51	20.3830	2016.30	20.3900	2021.77
20.3900Temp	47.3	20.3930	2024.40	20.4000	2029.33	20.4030	2034.23	20.4100	2039.44
20.4130	2045.96	20.4200	2049.72	20.4230	2056.47	20.4300	2063.38	20.4330	2070.09
20.4400	2076.97	20.4400Temp	48.2	20.4430	2083.53	20.4500	2088.31	20.4530	2094.64
20.4600	2104.07	20.4630	2106.57	20.4700	2108.19	20.4730	2113.97	20.4800	2119.87
20.4830	2126.58	20.4900	2133.64	20.4900Temp	46.8	20.4930	2141.39	20.5000	2151.37

8  
FILE

20.5030	2164.55	20.5100	2178.36	20.5130	2191.41	20.5200	2209.87	20.5230	2227.15
20.5300	2241.43	20.5330	2257.02	20.5400	2273.06	20.5400Temp	46.4	20.5430	2295.55
20.5500	2318.29	20.5530	2341.90	20.5600	2371.75	20.5630	2401.79	20.5700	2436.44
20.5730	2471.56	20.5800	2507.12	20.5830	2543.45	20.5900	2580.78	20.5900Temp	52.5
20.5930	2618.54	21.0000	2656.90	21.0030	2694.62	21.0100	2732.99	21.0130	2771.56
21.0200	2810.18	21.0230	2848.41	21.0300	2886.54	21.0330	2924.56	21.0400	2962.62
21.0400Temp	60.4	21.0430	3000.61	21.0500	3038.88	21.0530	3075.43	21.0600	3112.37
21.0630	3149.14	21.0700	3185.62	21.0730	3222.02	21.0800	3258.52	21.0830	3294.94
21.0900	3331.01	21.0900Temp	69.8	21.0930	3367.12	21.1000	3402.35	21.1030	3436.92
21.1100	3470.68	21.1130	3503.77	21.1200	3536.72	21.1230	3569.58	21.1300	3602.41

9  
FILE

21.1330	3635.34	21.1400	3668.21	21.1400Temp	60.8	21.1430	3701.18	21.1500	3734.20
21.1530	3767.04	21.1600	3800.05	21.1630	3832.78	21.1700	3865.38	21.1730	3898.11
21.1800	3931.20	21.1830	3964.48	21.1900	3997.61	21.1900Temp	91.4	21.1930	4030.81
21.2000	4063.96	21.2030	4096.81	21.2100	4129.63	21.2130	4162.59	21.2200	4195.47
21.2230	4228.34	21.2300	4261.04	21.2330	4293.78	21.2400	4326.73	21.2400Temp	102.6
21.2430	4359.61	21.2500	4392.61	21.2530	4425.59	21.2600	4458.76	21.2630	4491.94
21.2700	4525.07	21.2730	4558.18	21.2800	4591.33	21.2830	4624.31	21.2900	4657.23
21.2900Temp	113.4	21.2930	4650.06	21.3000	4722.68	21.3030	4754.98	21.3100	4787.19
21.3130	4819.32	21.3200	4851.43	21.3230	4882.06	21.3300	4913.54	21.3330	4944.91
21.3400	4976.47	21.3400Temp	124.5	21.3430	5008.25	21.3500	5040.02	21.3530	5071.86

FILE 10  
 FLOETZ  
 Schümbere

21.3630	5135.37	21.3700	5167.10	21.3730	5198.62	21.3800	5230.15
21.3900	5292.58	21.3900Temp	136.9	21.3930	5323.85	21.4000	5354.98
21.4100	5416.37	21.4130	5446.78	21.4200	5476.70	21.4230	5507.09
21.4300	5567.76	21.4400	5598.20	21.4400Temp	149.7	21.4430	5628.84
21.4500	5689.53	21.4600	5719.88	21.4630	5750.38	21.4700	5780.66
21.4800	5841.26	21.4830	5871.61	21.4900	5902.07	21.4900Temp	162.3
21.5000	5963.09	21.5030	5993.07	21.5100	6022.58	21.5130	6051.90
21.5230	6111.31	21.5300	6141.08	21.5330	6170.47	21.5400	6200.01
21.5430	6229.57	21.5500	6259.33	21.5530	6289.57	21.5600	6320.07
21.5700	6381.50	21.5730	6412.11	21.5800	6442.79	21.5830	6473.35

FILE 11

21.5900	6504.11	21.5930	6535.35	22.0000	6566.44	22.0030	6597.45
22.0100	6628.48	22.0200	6690.58	22.0230	6721.53	22.0300	6752.62
22.0330	6783.59	22.0400Temp	209.1	22.0430	6845.59	22.0500	6876.31
22.0530	6907.83	22.0630	6972.10	22.0700	7004.31	22.0730	7036.25
22.0800	7069.04	22.0900	7137.83	22.0900Temp	222.8	22.0930	7173.36
22.1000	7207.43	22.1100	7274.79	22.1130	7309.02	22.1200	7344.76
22.1230	7383.26	22.1300	7460.69	22.1400	7502.43	22.1400Temp	234.1
22.1430	7538.52	22.1530	7609.59	22.1600	7645.00	22.1630	7680.04
22.1700	7707.92	22.1800	7731.04	22.1830	7727.10	22.1900	7723.99
22.1900Temp	248.2	22.2000	7718.95	22.2030	7716.36	22.2100	7714.00

FILE 12

22.2130	7710.52	22.2230	7700.83	22.2300	7700.18	22.2330	7691.48
22.2400	7677.10	22.2430	7663.69	22.2500	7650.40	22.2530	7636.97
22.2600	7632.86	22.2700	7633.31	22.2730	7633.28	22.2800	7633.14
22.2830	7632.79	22.2900Temp	259.9	22.2930	7631.77	22.3000	7630.91
22.3030	7630.15	22.3100	7656.16	22.3200	7672.33	22.3230	7663.87
22.3300	7649.02	22.3400	7620.01	22.3400Temp	261.7	22.3430	7605.31
22.3500	7590.77	22.3600	7570.16	22.3630	7569.79	22.3700	7569.38
22.3730	7568.94	22.3830	7567.59	22.3900	7566.71	22.3900Temp	260.2
22.3930	7565.81	22.4030	7588.20	22.4100	7605.75	22.4130	7623.33
22.4200	7638.86	22.4300	7667.95	22.4330	7665.97	22.4400	7663.91

FILE 13

22.4400Temp	261.7	22.4430	7662.09	22.4500	7660.38	22.4600	7657.08
22.4630	7649.26	22.4700	7648.27	22.4730	7647.39	22.4830	7645.81
22.4900	7645.33	22.4900Temp	264.9	22.4930	7644.70	22.5030	7643.32
22.5100	7642.60	22.5130	7641.85	22.5200	7641.07	22.5300	7639.69
22.5330	7639.05	22.5400	7638.37	22.5400Temp	266.4	22.5500	7636.89
22.5530	7636.17	22.5600	7635.51	22.5630	7634.77	22.5730	7633.30
22.5800	7632.55	22.5830	7631.88	22.5900	7631.02	22.5930	7630.32
23.0000	7629.60	23.0030	7628.78	23.0100	7628.04	23.0200	7626.54
23.0230	7625.86	23.0300	7625.12	23.0330	7624.26	23.0400Temp	267.6
23.0430	7622.84	23.0500	7622.14	23.0530	7621.42	23.0630	7620.00

FILE 14

23.0700	7619.13	23.0730	7618.33	23.0800	7617.59	23.0900	7616.29
23.0900Temp	268.0	23.0930	7615.65	23.1000	7614.83	23.1100	6472.43
23.1130	5479.44	23.1200	5061.36	23.1230	5042.16	23.1330	5038.38
23.1400	5038.36	23.1400Temp	267.6	23.1430	5038.62	23.1530	5038.85
23.1600	5038.87	23.1630	5038.93	23.1700	5038.76	23.1800	5038.41
23.1830	5038.31	23.1900	5038.18	23.1900Temp	267.3	23.2000	5037.86
23.2030	5037.75	23.2100	5037.60	23.2130	5037.49	23.2230	5037.07
23.2300	5036.77	23.2330	5036.56	23.2400	5036.39	23.2430	5036.26
23.2500	5036.07	23.2530	5035.90	23.2600	5035.77	23.2700	5035.73
23.2730	5035.73	23.2800	5035.77	23.2830	5035.86	23.2900Temp	267.3

## FILE 15

Florsberg 312930 5036.05  
 Schlumberge 3200 5037.09  
 23.3400Temp 267.3  
 23.3630 5045.30  
 23.3900 5058.39  
 23.4100 5079.96  
 23.4330 5130.01  
 23.4530 5183.83  
 23.4800 5255.41  
 23.5000 5312.54

23.3000 5036.24  
 23.3230 5037.46  
 23.3430 5040.08  
 23.3700 5047.28  
 23.3900Temp 267.4  
 23.4130 5087.76  
 23.4400 5142.69  
 23.4600 5198.02  
 23.4830 5269.80  
 23.5030 5326.61

23.3030 5036.43  
 23.3300 5038.01  
 23.3500 5041.06  
 23.3730 5049.44  
 23.3930 5062.55  
 23.4200 5096.76  
 23.4400Temp 267.4  
 23.4630 5212.33  
 23.4900 5284.10  
 23.5100 5340.62

23.3100 5036.65  
 23.3330 5038.56  
 23.3530 5042.21  
 23.3800 5051.99  
 23.4000 5067.40  
 23.4230 5106.84  
 23.4430 5156.07  
 23.4700 5226.72  
 23.4900Temp 267.6  
 23.5130 5354.44

23.3130 5036.86  
 23.3400 5039.25  
 23.3600 5043.64  
 23.3830 5054.91  
 23.4030 5073.18  
 23.4300 5118.01  
 23.4500 5169.80  
 23.4730 5241.06  
 23.4930 5298.37  
 23.5200 5368.17

## FILE 16

23.5230 5381.83  
 23.5430 5435.20  
 23.5700 5499.30  
 23.5900Temp 268.0  
 0.0130 5607.32  
 0.0400 5663.11  
 0.0600 5705.55  
 0.0830 5756.31  
 0.1030 5795.36  
 0.1300 5841.71

23.5300 5395.33  
 23.5500 5448.14  
 23.5730 5511.75  
 23.5930 5560.45  
 0.0200 5618.80  
 0.0400Temp 268.2  
 0.0630 5715.94  
 0.0900 5766.23  
 0.1100 5804.85  
 0.1330 5850.80

23.5330 5408.74  
 23.5530 5461.13  
 23.5800 5524.12  
 0.0000 5572.37  
 0.0230 5630.04  
 0.0430 5673.86  
 0.0700 5726.11  
 0.0900Temp 268.3  
 0.1130 5814.15  
 0.1400 5859.73

23.5400 5422.02  
 23.5600 5473.92  
 23.5830 5536.36  
 0.0030 5584.17  
 0.0300 5641.17  
 0.0500 5684.54  
 0.0730 5736.30  
 0.0930 5776.10  
 0.1200 5823.47  
 0.1400Temp 268.3

23.5400Temp 267.8  
 23.5630 5486.65  
 23.5900 5548.47  
 0.0100 5595.83  
 0.0330 5652.17  
 0.0530 5695.08  
 0.0800 5746.39  
 0.1000 5785.79  
 0.1230 5832.62  
 0.1430 5868.63

## FILE 17

0.1500 5877.44  
 0.1730 5920.06  
 0.1930 5952.64  
 0.2200 5991.74  
 0.2400Temp 268.5  
 0.2630 6057.70  
 0.2900 6092.18  
 0.3100 6118.35  
 0.3330 6149.95  
 0.3530 6174.17

0.1530 5886.14  
 0.1800 5928.28  
 0.2000 5960.64  
 0.2230 5999.38  
 0.2430 6029.07  
 0.2700 6064.76  
 0.2900Temp 268.7  
 0.3130 6124.82  
 0.3400 6156.11  
 0.3600 6180.18

0.1600 5894.83  
 0.1830 5936.49  
 0.2030 5968.53  
 0.2300 6006.91  
 0.2500 6036.34  
 0.2730 6071.65  
 0.2930 6098.86  
 0.3200 6131.11  
 0.3400Temp 268.7  
 0.3600Temp 6186.07

0.1630 5903.25  
 0.1900 5944.58  
 0.2100 5976.38  
 0.2330 6014.39  
 0.2530 6043.49  
 0.2800 6078.46  
 0.3000 6105.36  
 0.3230 6137.51  
 0.3430 6162.15  
 0.3700 6191.81

0.1700 5911.62  
 0.1900Temp 268.5  
 0.2130 5984.10  
 0.2400 6021.79  
 0.2600 6050.60  
 0.2830 6085.37  
 0.3030 6111.85  
 0.3300 6143.76  
 0.3500 6168.21  
 0.3730 6197.57

## FILE 18

0.3600 6203.31  
 0.4000 6225.67  
 0.4230 6252.62  
 0.4430 6273.38  
 0.4700 6298.32  
 0.4900Temp 268.9  
 0.5130 6340.50  
 0.5400 6362.67  
 0.5600 6379.71  
 0.5830 6400.35

0.3830 6209.01  
 0.4030 6231.16  
 0.4300 6257.89  
 0.4500 6278.44  
 0.4730 6303.12  
 0.4930 6322.16  
 0.5200 6345.01  
 0.5400Temp 266.9  
 0.5630 6383.87  
 0.5900 6404.36

0.3900 6214.58  
 0.4100 6236.60  
 0.4330 6263.05  
 0.4530 6283.51  
 0.4800 6307.92  
 0.5000 6326.79  
 0.5230 6349.51  
 0.5430 6366.99  
 0.5700 6388.01  
 0.5900Temp 268.9

0.3900Temp 268.9  
 0.4130 6241.95  
 0.4400 6268.26  
 0.4600 6288.46  
 0.4830 6312.66  
 0.5030 6331.39  
 0.5300 6353.86  
 0.5500 6371.23  
 0.5730 6392.09  
 0.5930 6408.31

0.3930 6220.19  
 0.4200 6247.31  
 0.4400Temp 268.9  
 0.4630 6293.48  
 0.4900 6317.42  
 0.5100 6335.98  
 0.5330 6358.24  
 0.5530 6375.52  
 0.5800 6396.23  
 1.0000 6412.25

## FILE 19

1.0030 6416.09  
 1.0300 6435.32  
 1.0500 6450.13  
 1.0730 6467.86  
 1.0930 6481.56  
 1.1200 6497.59  
 1.1400Temp 268.9  
 1.1630 6525.89  
 1.1900 6540.44  
 1.2100 6551.90

1.0100 6419.96  
 1.0330 6439.08  
 1.0530 6453.76  
 1.0800 6471.32  
 1.1000 6484.89  
 1.1230 6501.15  
 1.1430 6513.76  
 1.1700 6528.72  
 1.1900Temp 268.9  
 1.2130 6554.61

1.0130 6423.82  
 1.0400 6442.81  
 1.0600 6457.28  
 1.0830 6474.78  
 1.1030 6488.14  
 1.1300 6504.31  
 1.1500 6516.88  
 1.1730 6531.65  
 1.1930 6543.36  
 1.2200 6557.43

1.0200 6427.70  
 1.0400Temp 268.9  
 1.0630 6460.82  
 1.0900 6478.23  
 1.1100 6491.46  
 1.1330 6507.51  
 1.1530 6519.91  
 1.1800 6534.66  
 1.2000 6546.29  
 1.2230 6560.14

1.0230 6431.48  
 1.0430 6446.50  
 1.0700 6464.34  
 1.0900Temp 268.9  
 1.1130 6494.75  
 1.1400 6510.65  
 1.1600 6522.83  
 1.1830 6537.56  
 1.2030 6549.10  
 1.2300 6562.87

FILE 20

ROPTINA  
Schlumberger

1.2330	6565.64	1.2400	6568.38	1.2400Temp	268.9	1.2430	6570.98	1.2500	6573.65
1.2530	6576.27	1.2600	6578.92	1.2630	6581.52	1.2700	6584.08	1.2730	6586.64
1.2800	6589.08	1.2830	6591.55	1.2900	6593.98	1.2900Temp	268.9	1.2930	6596.48
1.3000	6599.02	1.3100	6601.42	1.3100	6603.89	1.3130	6606.26	1.3200	6608.70
1.3230	6610.96	1.3300	6613.35	1.3330	6615.70	1.3400	6618.05	1.3400Temp	269.1
1.3430	6620.31	1.3500	6622.77	1.3530	6624.94	1.3600	6627.23	1.3630	6629.55
1.3700	6631.65	1.3730	6633.82	1.3800	6636.04	1.3830	6638.24	1.3900	6640.50
1.3900Temp	269.1	1.3930	6642.55	1.4000	6644.64	1.4030	6646.84	1.4100	6649.00
1.4130	6651.00	1.4200	6653.03	1.4230	6655.10	1.4300	6657.09	1.4330	6659.20
1.4400	6661.29	1.4400Temp	269.1	1.4430	6663.23	1.4500	6665.17	1.4530	6667.14

FILE 21

1.4600	6669.08	1.4630	6671.04	1.4700	6672.96	1.4730	6674.93	1.4800	6676.83
1.4830	6678.64	1.4900	6680.50	1.4900Temp	269.1	1.4930	6682.40	1.5000	6684.32
1.5030	6686.09	1.5100	6687.84	1.5130	6689.74	1.5200	6691.55	1.5230	6693.33
1.5300	6695.23	1.5330	6696.95	1.5400	6698.62	1.5400Temp	269.1	1.5430	6700.65
1.5500	6702.44	1.5530	6704.34	1.5600	6706.05	1.5630	6707.73	1.5700	6709.48
1.5730	6711.00	1.5800	6712.71	1.5830	6714.50	1.5900	6715.95	1.5900Temp	269.1
1.5930	6717.64	2.0000	6719.41	2.0030	6721.05	2.0100	6722.63	2.0130	6724.23
2.0200	6725.92	2.0230	6727.39	2.0300	6728.82	2.0330	6730.42	2.0400	6731.96
2.0400Temp	269.1	2.0430	6733.64	2.0500	6735.03	2.0530	6736.53	2.0600	6738.13
2.0630	6739.73	2.0700	6740.99	2.0730	6742.48	2.0800	6744.04	2.0830	6745.43

FILE 22

2.0900	6746.96	2.0900Temp	269.1	2.0930	6748.41	2.1000	6749.87	2.1030	6751.34
2.1100	6752.64	2.1130	6753.92	2.1200	6755.54	2.1230	6756.78	2.1300	6758.13
2.1330	6759.73	2.1400	6761.11	2.1400Temp	269.1	2.1430	6762.35	2.1500	6763.63
2.1530	6765.06	2.1600	6766.34	2.1630	6767.71	2.1700	6768.99	2.1730	6770.27
2.1800	6771.66	2.1830	6772.83	2.1900	6774.13	2.1900Temp	269.1	2.1930	6775.39
2.2000	6776.70	2.2030	6777.91	2.2100	6779.26	2.2130	6780.52	2.2200	6781.78
2.2230	6782.91	2.2300	6784.17	2.2330	6785.34	2.2400	6786.51	2.2400Temp	269.1
2.2430	6787.75	2.2500	6788.86	2.2530	6789.99	2.2600	6791.40	2.2630	6792.45
2.2700	6793.71	2.2730	6794.84	2.2800	6795.93	2.2830	6797.10	2.2900	6798.25
2.2900Temp	269.1	2.2930	6799.36	2.3000	6800.39	2.3030	6801.63	2.3100	6802.84

FILE 23

2.3130	6803.98	2.3200	6804.96	2.3230	6805.94	2.3300	6807.01	2.3330	6808.07
2.3400	6809.31	2.3400Temp	269.1	2.3430	6810.27	2.3500	6811.42	2.3530	6812.32
2.3600	6813.50	2.3630	6814.63	2.3700	6815.74	2.3730	6816.78	2.3800	6817.74
2.3830	6818.64	2.3900	6819.71	2.3900Temp	269.1	2.3930	6820.75	2.4000	6821.65
2.4030	6822.70	2.4100	6823.66	2.4130	6824.66	2.4200	6825.58	2.4230	6826.43
2.4300	6827.50	2.4330	6828.29	2.4400	6829.48	2.4400Temp	269.1	2.4430	6830.30
2.4500	6831.49	2.4530	6832.18	2.4600	6833.20	2.4630	6834.21	2.4700	6835.04
2.4730	6835.96	2.4800	6836.82	2.4830	6837.74	2.4900	6838.57	2.4900Temp	269.1
2.4930	6839.59	2.5000	6840.34	2.5030	6841.17	2.5100	6842.01	2.5130	6842.71
2.5200	6843.46	2.5230	6844.33	2.5300	6845.21	2.5330	6846.13	2.5400	6846.92

FILE 24

2.5400Temp	269.1	2.5430	6847.62	2.5500	6848.49	2.5530	6849.39	2.5600	6850.18
2.5630	6851.03	2.5700	6851.75	2.5730	6852.54	2.5800	6853.35	2.5830	6854.18
2.5900	6854.91	2.5900Temp	269.1	2.5930	6855.57	3.0000	6856.27	3.0030	6857.06
3.0100	6857.85	3.0130	6858.45	3.0200	6859.13	3.0230	6859.84	3.0300	6860.61
3.0330	6861.44	3.0400	6862.12	3.0400Temp	269.1	3.0430	6862.91	3.0500	6863.90
3.0530	6866.10	3.0600	6866.89	3.0630	6867.61	3.0700	6868.41	3.0730	6869.20
3.0800	6869.84	3.0830	6870.52	3.0900	6871.21	3.0900Temp	269.1	3.0930	6871.96
3.1000	6872.60	3.1030	6873.36	3.1100	6873.98	3.1130	6874.69	3.1200	6875.44
3.1230	6876.20	3.1300	6876.82	3.1330	6877.53	3.1400	6878.17	3.1400Temp	269.1
3.1430	6878.61	3.1500	6879.51	3.1530	6880.09	3.1600	6880.92	3.1630	6881.39

FILE  
ROBERT  
Schlumberger

25  
3.1700 6882.10  
3.1900Temp 269.1  
3.2130 6887.75  
3.2400 6890.74  
3.2600 6873.09  
3.2830 6789.89  
3.3030 6694.28  
3.3300 6645.84  
3.3500 6650.02  
3.3730 6654.18

3.1730 6882.80  
3.1930 6885.32  
3.2200 6888.24  
3.2400Temp 269.1  
3.2630 6878.49  
3.2900 6765.53  
3.3100 6670.72  
3.3330 6647.06  
3.3530 6651.08  
3.3800 6654.75

3.1860 6883.53  
3.2000 6885.83  
3.2230 6888.80  
3.2430 6891.34  
3.2700 6863.14  
3.2900Temp 267.6  
3.3130 6654.68  
3.3400 6648.21  
3.3600 6651.88  
3.3830 6655.49

3.1830 6884.14  
3.2030 6886.41  
3.2300 6889.52  
3.2530 6891.79  
3.2730 6838.78  
3.2930 6741.37  
3.3200 6644.67  
3.3400Temp 260.18  
3.3630 6652.77  
3.3900 6656.16

3.1900 6884.81  
3.2100 6887.13  
3.2330 6890.10  
3.2530 6886.21  
3.2800 6814.64  
3.3000 6717.89  
3.3230 6644.31  
3.3430 6649.16  
3.3700 6653.34  
3.3900Temp 256.6

FILE

26  
3.3930 6656.77  
3.4200 6660.50  
3.4400Temp 254.5  
3.4630 6622.02  
3.4900 6482.66  
3.5100 6427.52  
3.5330 6430.67  
3.5530 6432.41  
3.5800 6434.97  
4.0000 6437.25

3.4000 6657.54  
3.4230 6661.14  
3.4430 6664.11  
3.4700 6595.77  
3.4900Temp 252.9  
3.5130 6428.44  
3.5400 6430.99  
3.5600 6432.92  
3.5830 6435.55  
4.0030 6437.85

3.4030 6658.34  
3.4300 6661.99  
3.4500 6664.90  
3.4730 6568.71  
3.4930 6455.06  
3.5200 6429.15  
3.5400Temp 249.6  
3.5630 6433.43  
3.5900 6436.09  
4.0100 6437.24

3.4100 6659.13  
3.4330 6662.58  
3.4530 6665.62  
3.4800 6538.69  
3.5000 6430.38  
3.5230 6429.80  
3.5430 6431.46  
3.5700 6433.97  
3.5900Temp 247.8  
4.0130 6414.99

3.4130 6659.70  
3.4400 6663.37  
3.4600 6646.65  
3.4830 6510.31  
3.5030 6426.51  
3.5300 6430.25  
3.5500 6431.94  
3.5730 6434.48  
3.5930 6436.62  
4.0200 6390.00

FILE

27  
4.0230 6365.16  
4.0430 6266.61  
4.0700 6201.62  
4.0900Temp 243.9  
4.1130 6214.28  
4.1400 6220.19  
4.1600 6224.75  
4.1830 6141.00  
4.2030 6045.87  
4.2300 6004.13

4.0300 6340.23  
4.0500 6242.27  
4.0730 6203.34  
4.0930 6209.19  
4.1200 6215.52  
4.1400Temp 242.2  
4.1630 6225.80  
4.1900 6116.77  
4.2100 6023.21  
4.2330 6006.09

4.0330 6315.58  
4.0530 6218.36  
4.0800 6204.93  
4.1000 6210.53  
4.1230 6216.72  
4.1430 6221.33  
4.1700 6213.39  
4.1900Temp 241.2  
4.2130 6001.74  
4.2400 6007.77

4.0400 6291.17  
4.0600 6201.91  
4.0830 6206.42  
4.1030 6211.80  
4.1300 6217.86  
4.1500 6222.47  
4.1730 6189.33  
4.1930 6092.81  
4.2200 5999.66  
4.2400Temp 236.5

4.0400Temp 246.6  
4.0630 6199.83  
4.0900 6207.86  
4.1100 6213.08  
4.1330 6219.05  
4.1530 6223.61  
4.1800 6165.19  
4.2000 6068.85  
4.2230 6001.98  
4.2430 6009.32

FILE

28  
4.2500 6010.80  
4.2730 6017.22  
4.2930 6021.83  
4.3200 6027.29  
4.3400Temp 231.8  
4.3630 5789.29  
4.3900 5637.88  
4.4100 5516.16  
4.4330 5363.24  
4.4530 5238.08

4.2530 6012.22  
4.2800 6016.37  
4.3000 6022.90  
4.3230 6010.99  
4.3430 5900.89  
4.3700 5758.29  
4.3900Temp 226.9  
4.4130 5485.55  
4.4400 5332.14  
4.4600 5205.28

4.2600 6013.50  
4.2830 6019.55  
4.3030 6023.99  
4.3300 5983.45  
4.3500 5873.54  
4.3730 5728.29  
4.3930 5607.75  
4.4200 5454.88  
4.4400Temp 217.2  
4.4630 5171.86

4.2630 6014.74  
4.2900 6020.65  
4.3100 6025.10  
4.3330 5955.87  
4.3530 5844.43  
4.3800 5698.12  
4.4000 5577.32  
4.4230 5424.58  
4.4430 5300.94  
4.4700 5138.64

4.2700 6015.95  
4.2900Temp 233.4  
4.3130 6026.20  
4.3400 5928.35  
4.3600 5821.10  
4.3830 5667.96  
4.4030 5546.94  
4.4300 5394.19  
4.4500 5270.04  
4.4730 5105.49

FILE

29  
4.4800 5071.98  
4.5000 4936.05  
4.5230 4766.59  
4.5430 4626.30  
4.5700 4443.90  
4.5900Temp 171.3  
5.0130 4106.07  
5.0400 3922.19  
5.0600 3771.26  
5.0830 3596.93

4.4830 5038.81  
4.5030 4904.02  
4.5300 4732.11  
4.5500 4590.33  
4.5730 4406.98  
4.5930 4254.96  
5.0200 4071.05  
5.0400Temp 156.0  
5.0630 3733.25  
5.0900 3570.76

4.4900 5005.44  
4.5100 4869.62  
4.5330 4697.08  
4.5530 4554.35  
4.5800 4366.40  
5.0000 4218.36  
5.0230 4034.14  
5.0430 3884.49  
5.0700 3695.16  
5.0900Temp 142.2

4.4900Temp 201.9  
4.5130 4820.30  
4.5400 4661.87  
4.5600 4517.60  
4.5830 4328.38  
5.0030 4181.69  
5.0300 3996.98  
5.0500 3846.82  
5.0730 3658.19  
5.0930 3542.12

4.4930 4971.78  
4.5200 4801.01  
4.5400Temp 166.1  
4.5630 4480.73  
4.5900 4291.67  
5.0100 4144.97  
5.0330 3959.60  
5.0530 3809.08  
5.0800 3622.70  
5.1000 3514.54



FILE 30

1030	3476.60	5.1100	3448.88	5.1130	3420.12	5.1200	3392.25	5.1230	3364.96
1300	3336.83	5.1330	3308.11	5.1400	3280.77	5.1400Temp	142.2	5.1430	3252.48
1500	3224.03	5.1530	3196.14	5.1600	3168.36	5.1630	3140.70	5.1700	3112.20
1730	3074.56	5.1800	3046.29	5.1830	3018.18	5.1900	2990.01	5.1900Temp	142.2
1930	2984.56	5.2000	2956.14	5.2030	2927.69	5.2100	2899.01	5.2130	2869.69
2200	2839.63	5.2230	2826.43	5.2300	2808.81	5.2330	2777.76	5.2400	2746.55
2400Temp	106.9	5.2430	2715.40	5.2500	2684.41	5.2530	2653.20	5.2600	2621.96
2630	2590.54	5.2700	2559.15	5.2730	2527.54	5.2800	2495.73	5.2830	2463.78
2900	2431.70	5.2900Temp	97.0	5.2930	2399.50	5.3000	2367.28	5.3030	2335.04
3100	2302.77	5.3130	2270.53	5.3200	2238.29	5.3230	2205.98	5.3300	2173.55

FILE 31

5.3330	2140.86	5.3400Temp	86.5	5.3430	2144.22	5.3500	2111.55
5.3530	2078.79	5.3630	2046.11	5.3700	1980.75	5.3730	1948.16
5.3800	1915.53	5.3900	1883.10	5.3900Temp	77.5	5.3930	1818.17
5.4000	1785.60	5.4100	1752.99	5.4130	1706.10	5.4200	1691.35
5.4230	1679.84	5.4300	1669.91	5.4330	1660.11	5.4400Temp	65.5
5.4430	1640.56	5.4500	1630.27	5.4530	1619.49	5.4630	1596.26
5.4700	1587.03	5.4730	1580.48	5.4800	1573.77	5.4900	1574.94
5.4900Temp	57.7	5.4930	1578.04	5.5000	1580.55	5.5100	1586.48
5.5130	1589.22	5.5200	1592.15	5.5230	1594.97	5.5330	1600.36
5.5400	1603.14	5.5400Temp	54.1	5.5430	1605.91	5.5530	1637.63

FILE 32

5.5600	1637.64	5.5630	1622.23	5.5700	1618.52	5.5730	1621.24	5.5800	1623.96
5.5830	117.62	5.5900	15.30	5.5900Temp	52.2	5.5930	14.30	6.0000	13.98
6.0030	13.44	6.0100	13.14	6.0130	12.91	6.0200	12.71	6.0230	12.52
6.0300	12.33	6.0330	12.23	6.0400	12.52	6.0400Temp	50.7	6.0430	12.37
6.0500	12.23	6.0530	12.20	6.0600	12.05	6.0630	14.50	6.0700	27.70
6.0730	31.26	6.0800	27.85	6.0830	27.57	6.0900	26.51	6.0900Temp	49.8
6.0930	14.13	6.1000	13.09	6.1030	10.22	6.1100	9.85	6.1130	6.79
6.1200	6.15	6.1230	6.39	6.1300	6.29	6.1330	6.30	6.1400	6.20
6.1400Temp	49.5	6.1430	6.14	6.1500	6.00	6.1530	6.02	6.1600	6.02
6.1630	5.80	6.1700	5.99	6.1730	5.99	6.1800	6.16	6.1830	6.21

FILE 33

6.1900	6.32	6.1900Temp	49.5	6.1930	6.41	6.2000	6.75	6.2030	7.01
6.2100	7.31	6.2130	7.82	6.2200	8.77	6.2230	9.68	6.2300	10.97
6.2330	11.94	6.2400	13.06	6.2400Temp	49.8	6.2430	14.58	6.2500	16.11