

FLOPE

Denne rapport
tilhører



LTEK DOK.SENTER

L.NR. 12.383020005

KODE Well 1/9-6 nr 16

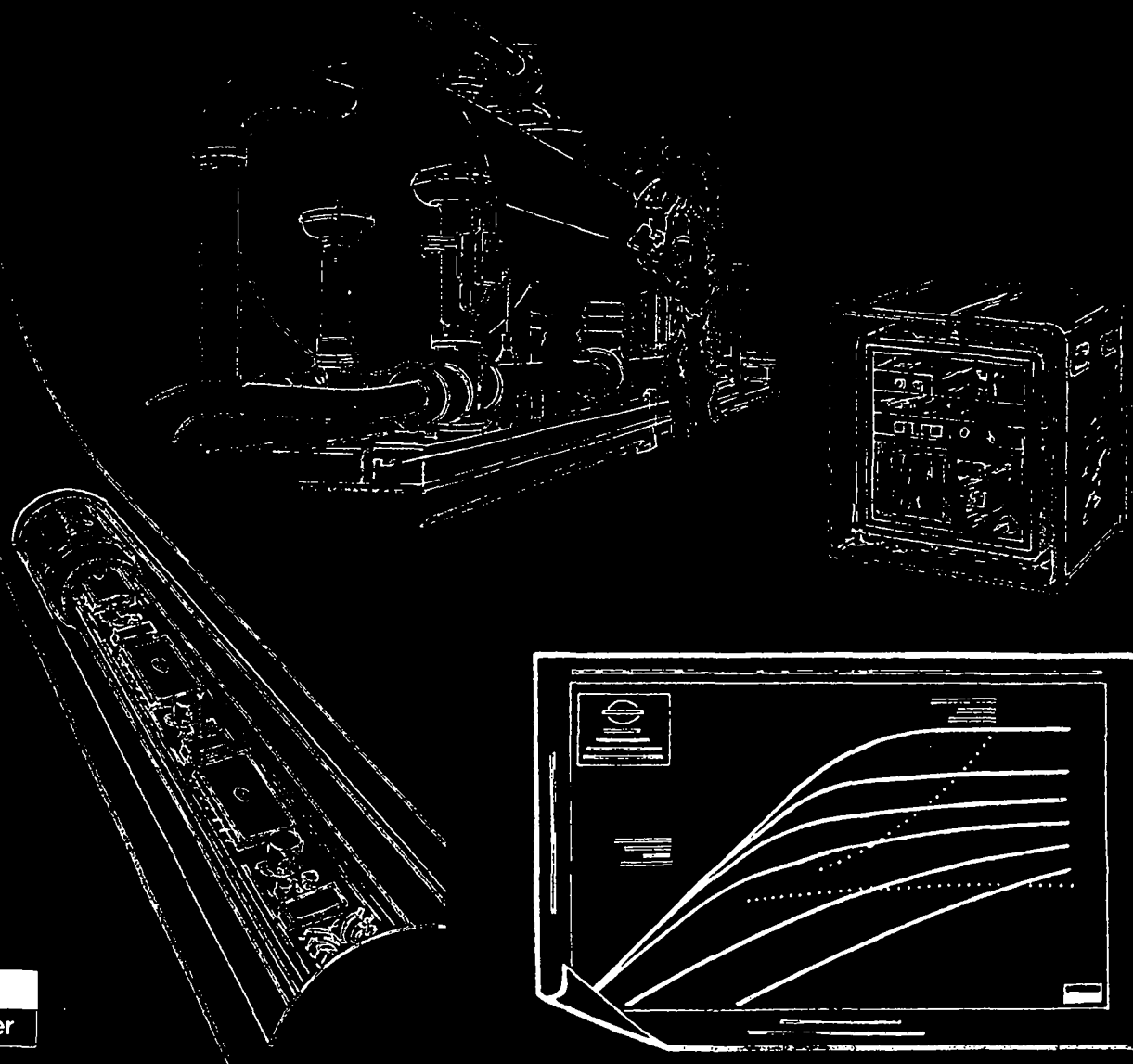
Returneres etter bruk

HIGH ACCURACY PRESSURE TEMPERATURE MEASUREMENTS ¹⁷

Company: PHILLIPS P. Country: NORWAY

Field: TOMMELITEN Well: 1/9 - 6

Zone: Date: 6th - 7th Sept



FLUID METRO

DISTRICT: EMR

BASE : STAVANGER

REPORT N°: ELS/82/48

HIGH ACCURACY PRESSURE TEMPERATURE MEASUREMENTS 17

Company: PHILLIPS P. Country: NORWAY

Field: TOMMELITEN Well: 1/9 - 6

Zone: Date: 6th - 7th Sept. 1982

PERFORATION: 12,374 - 12,391 Ft.

D.S.T. No. 1

Gauge: TPT 81238

Depth: 12,304,5 ft.

FLOPETROL

Country : NORWAY

Section INDEX

Field : TOMMELITEN

Page : 1

Base STAVANGER

Well : 1/9 - 6

Report No : ELS/82/48

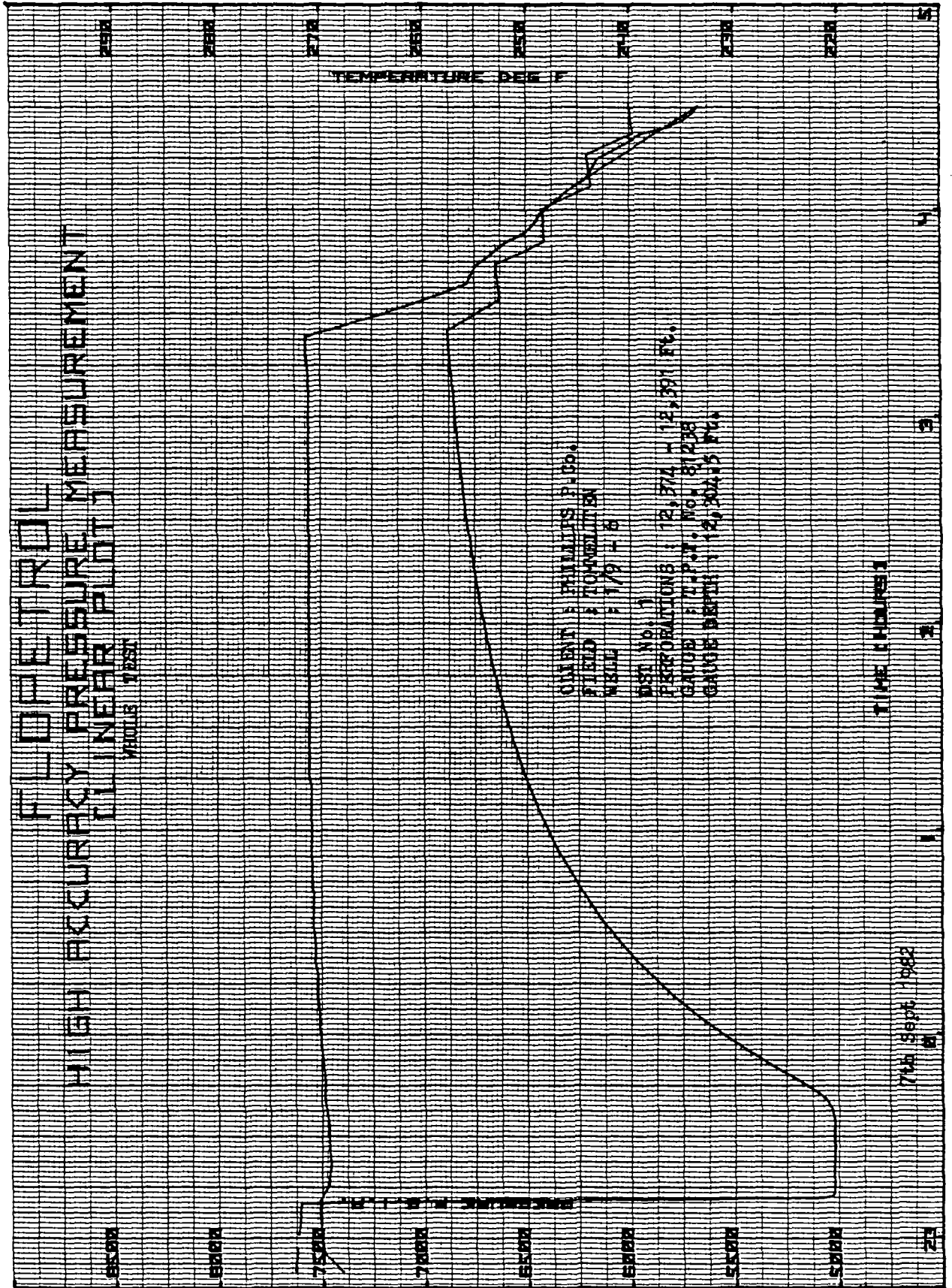
INDEX

- 1 - MEASUREMENT PLOTS
- 2 - MEASUREMENT DATA
- 3 - SEQUENCE OF EVENTS
- 4 - WELL COMPLETION DATA
- 5 - LISTING OF ALL DATA RECORDED
- 6 -
- 7 -

Flopetrol operator: P. Porsedal
A. Engebakken

Company representative: J. Stevens
J. Danielsen

FLOPETROL
HIGH ACCURACY PRESSURE MEASUREMENT
LINEAR PLOT
 VOLTS TEST



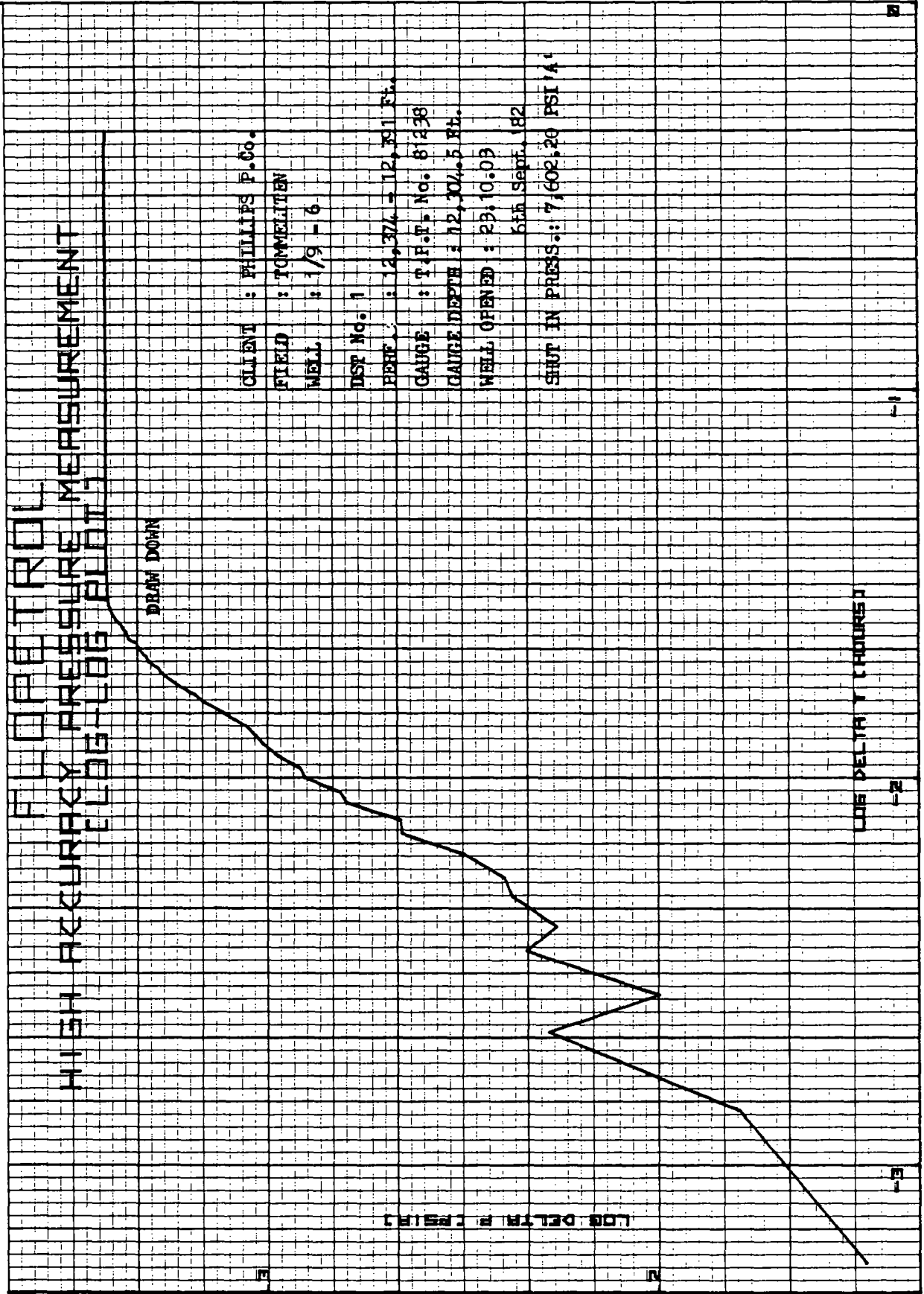
CLIENT : PHILLIPS P. CO.
 FIELD : TONNELLITA
 WELL : 179 - 8

TEST NO. 1
 PENETRATIONS : 12, 374 - 12, 391 FC.
 GAUGE : 17 P.S.I. No. 81236
 GAUGE DEPTH : 12, 304.5 FC.

TIME (HOURS)

7th Sept 1962

27



WELL LOG

LOG DELTA P [PSIA]

WELL ID UP PART 1

CLIENT : PHILLIPS P. Co.

DATE : 1/9 - 6

WELL No. 1

DEPTH : 12,374 - 12,391 Ft.

LOG : TPT No. 81238

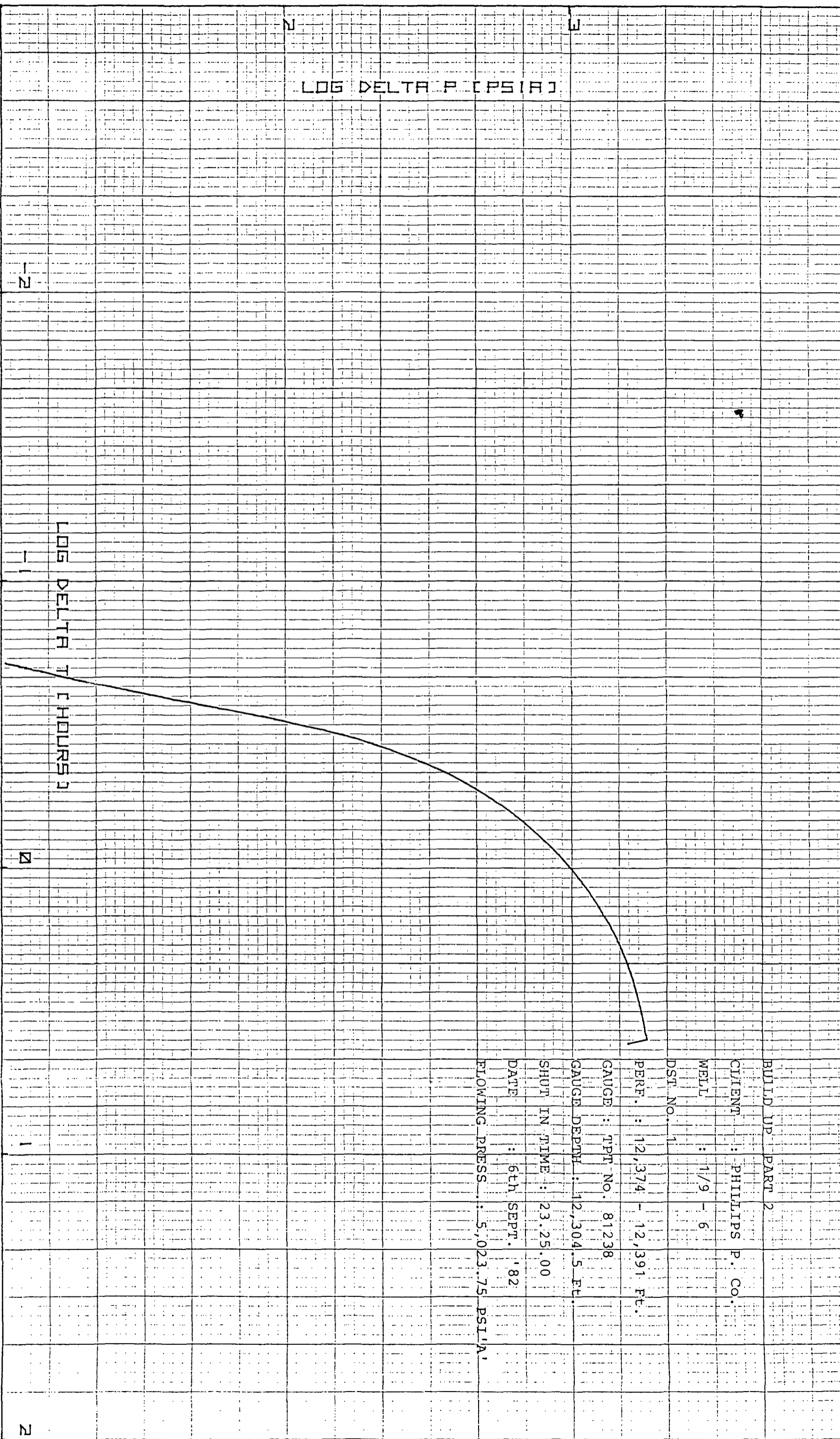
LOG DEPTH : 12,304.5 Ft.

LOG IN TIME : 23.25.00

DATE : 6th SEPT. '82

LOGGING PRESS. : 5,023.75 PSI 'A'

FLUORIDE WELL REPERFORATION MEASUREMENT
HIGH FREQUENCY PERFORATION



BUILD UP PART 2
CLIENT : PHILLIPS P. CO.
WELL : 1/9 - 6
DST No. : 1
PERF. : 12,374 - 12,391 Ft.
GAUGE : TPT NO. 81238
GAUGE DEPTH : 12,304.5 Ft.
SHOT IN TIME : 23.25.00
DATE : 6th SEPT. 1982
FLOWING PRESS. : 5,023.75 PSIA

-2

1

2

1

2

FLOPETROL
HIGH ACCURACY PRESSURE MEASUREMENT
[HORNOR PLOT]

CLIENT : PHILLIPS P. Co.

FIELD : TOMELITA

WELL : 1/9 - 6

PST No. :

PERF. : 12, 374 - 12, 391 FC.

GAUGE : I.P.T. No. 81238

GAUGE DATE : 12, 304, 5 FC.

SENT IN TIME : 23, 25, 00

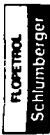
6th Sept., 62

FLOWING PRES. : 5, 023.75 PSI (A)

FLOW TIME : 15 minutes

PRESSURE P.S.I.A.

LOG T + DELTA T
DELTA T



FLOPETROL
PRESSURE & TEMPERATURE CALCULATIONS

SECTION 2
PAGE 1

REMARKS

6th Sept. 82

T.P.T. No. 81238
at 12,304 Ft.

LOG T+DEL.T
DEL.T

LOG DEL.P

DEL.P
PSIA

LOG DEL.T

DEL.T
(HOURS)

TEMP.
DIG.F

PRESS.
PSIA

TIME
HR. MIN. SS

22.50.0	7634.26									
22.50.30	7633.23									
22.51.0	7632.55									
22.51.30	7631.76									
22.52.0	7631.02									
22.52.30	7629.91									
22.53.0	7628.97									
22.53.30	7628.12									
22.54.0	7627.74									
22.54.30	7626.43									
22.55.0	7625.50									
22.55.30	7625.56	269.8								
22.56.0	7624.01									
22.56.30	7623.40									
22.57.0	7622.86									
22.57.30	7621.95	270.0								
22.58.0	7621.05									
22.58.30	7620.14									
22.59.0	7619.23									
22.59.30	7618.33									
23.0.0	7617.42									
23.0.30	7616.94	270.1								
23.1.0	7616.80									
23.1.30	7615.09									
23.2.0	7615.06									
23.2.30	7613.73									
23.3.0	7613.25									
23.3.30	7612.46									
23.4.0	7611.63									
23.4.30	7610.76									
23.5.0	7610.11									
23.5.30	7609.39									
23.6.0	7608.68	270.3								
23.6.30	7607.62									
23.7.0	7607.02									
23.7.30	7606.55									
23.8.0	7605.79									
23.8.30	7604.77									
23.9.0	7603.91									
23.9.30	7603.50									
23.10.0	7602.51									
23.10.30	7150.50									



FLOPETROL
PRESSURE & TEMPERATURE CALCULATIONS

SECTION 2
PAGE 2

TIME HR:MIN:SS	PRESS: PSIA	TEMP: DEG.F	DEL.T (HOURS)	LOG DEL.T	DEL.P PSIA	LOG DEL.P	LOG T-DEL.T DEL.T	REMARKS
23.10.3	7046.97	270.3	0.0000	-3.2553	462.36	2.6650	WELL OPENED	
23.10.5	7139.84	270.3	0.0006	-2.9542	371.49	2.5699	23.10.3	
23.10.7	7230.71	270.3	0.0011	-2.7782	280.62	2.4481	SHUT IN PFES.	
23.10.9	7321.58	270.3	0.0017	-2.6532	189.75	2.2782	7602.20	
23.10.11	7412.45	270.3	0.0022	-2.5563	98.88	1.9951		
23.10.13	7503.32	270.3	0.0028	-2.4771	176.98	2.2479		
23.10.15	7425.22	270.3	0.0033	-2.4102	198.56	2.2979		
23.10.17	7403.64	270.3	0.0034	-2.3522	199.33	2.2996		
23.10.19	7402.87	270.3	0.0044	-2.3010	235.80	2.3725		
23.10.21	7366.40	270.3	0.0050	-2.2553	246.26	2.3914		
23.10.23	7355.94	270.3	0.0056	-2.2139	289.93	2.4623		
23.10.25	7312.27	270.3	0.0061	-2.1761	358.08	2.5540		
23.10.27	7244.12	270.3	0.0067	-2.1413	450.73	2.6539		
23.10.29	7151.47	270.3	0.0072	-2.1091	452.68	2.6558		
23.10.31	7149.52	270.3	0.0078	-2.0792	567.93	2.7543		
23.10.33	7034.27	270.3	0.0083	-2.0512	637.71	2.8046		
23.10.35	6964.49	270.3	0.0089	-2.0248	699.75	2.8449		
23.10.37	6902.45	270.3	0.0094	-2.0000	799.52	2.9028		
23.10.39	6802.68	270.3	0.0100	-1.9765	820.11	2.9139		
23.10.41	6782.09	270.3	0.0106	-1.9542	899.29	2.9539		
23.10.43	6702.91	270.3	0.0111	-1.9331	967.22	2.9855		
23.10.45	6634.98	270.3	0.0117	-1.9128	1023.91	3.0103		
23.10.47	6578.29	270.3	0.0122	-1.8935	1063.50	3.0267		
23.10.49	6538.70	270.3	0.0128	-1.8751	1108.53	3.0447		
23.10.51	6493.67	270.3	0.0133	-1.8573	1168.73	3.0677		
23.10.53	6433.47	270.3	0.0139	-1.8403	1249.81	3.0968		
23.10.55	6352.39	270.3	0.0144	-1.8239	1336.61	3.1260		
23.10.57	6265.59	270.3	0.0150	-1.8081	1423.41	3.1533		
23.10.59	6178.79	270.3	0.0156	-1.7929	1495.67	3.1748		
23.11.1	6106.53	270.3	0.0161	-1.7782	1574.47	3.1971		
23.11.3	6027.73	270.3	0.0167	-1.7639	1674.36	3.2238		
23.11.5	5927.84	270.3	0.0172	-1.7501	1748.16	3.2426		
23.11.7	5854.04	270.3	0.0178	-1.7368	1820.19	3.2601		
23.11.9	5782.01	270.3	0.0183	-1.7238	1878.17	3.2737		
23.11.11	5724.03	270.3	0.0189	-1.7112	1938.32	3.2874		
23.11.13	5663.68	270.3	0.0194	-1.6990	2014.71	3.3042		
23.11.15	5587.49	270.3	0.0200	-1.6871	2035.17	3.3086		
23.11.17	5567.03	270.3	0.0206	-1.6755	2090.90	3.3203		
23.11.19	5511.30	270.3	0.0211	-1.6642	2129.35	3.3282		
23.11.21	5472.85	270.3	0.0217	-1.6532	2150.51	3.3325		
23.11.23	5451.69	270.3	0.0222	-1.6425	2250.83	3.3523		
23.11.25	5351.37	270.3	0.0228					



FLOPETROL
PRESSURE & TEMPERATURE CALCULATIONS

SECTION 2
PAGE 3

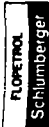
REMARKS

TIME HR.-MIN.-SS	PRESS. PSIA	TEMP. DEG.F	DEL.T (HOURS)	LOG DEL.T	DEL.P PSIA	LOG DEL.P	LOG T-DEL.T DEL.T	REMARKS
23.11.27	5332.21	270.3	0.0233	-1.6320	2269.99	3.3560		
23.11.28	5322.63	270.3	0.0236	-1.6269	2279.57	3.3579		
23.11.30	5273.03	270.3	0.0242	-1.6168	2329.17	3.3672		
23.11.32	5241.82	270.3	0.0247	-1.6069	2360.38	3.3730		
23.11.34	5198.09	270.3	0.0253	-1.5973	2404.11	3.3810		
23.11.36	5154.44	270.3	0.0258	-1.5878	2447.76	3.3888		
23.11.38	5123.39	270.3	0.0264	-1.5786	2478.81	3.3942		
23.11.40	5098.10	270.3	0.0269	-1.5695	2504.10	3.3987		
23.11.42	5078.35	270.3	0.0275	-1.5607	2523.85	3.4021		
23.11.44	5068.33	270.3	0.0281	-1.5520	2533.87	3.4038		
23.11.46	5062.48	270.3	0.0286	-1.5435	2539.72	3.4048		
23.11.48	5054.72	270.3	0.0292	-1.5351	2547.48	3.4061		
23.11.50	5049.33	270.3	0.0297	-1.5269	2552.87	3.4070		
23.11.52	5046.35	270.3	0.0303	-1.5189	2555.85	3.4075		
23.11.54	5044.80	270.3	0.0308	-1.5110	2557.40	3.4078		
23.11.56	5042.27	270.3	0.0314	-1.5032	2559.93	3.4082		
23.11.58	5039.37	270.3	0.0319	-1.4956	2562.83	3.4087		
23.12. 0	5037.37	270.3	0.0325	-1.4881	2564.83	3.4091		
23.12. 2	5038.23	270.3	0.0331	-1.4808	2563.97	3.4089		
23.12. 4	5036.95	270.3	0.0336	-1.4735	2565.25	3.4091		
23.12. 6	5035.37	270.3	0.0342	-1.4664	2566.83	3.4094		
23.12. 8	5033.48	270.3	0.0347	-1.4594	2568.72	3.4097		
23.12.10	5034.55	270.3	0.0353	-1.4525	2567.65	3.4095		
23.12.12	5034.08	270.3	0.0358	-1.4457	2568.12	3.4096		
23.12.14	5032.99	270.3	0.0364	-1.4390	2569.21	3.4098		
23.12.16	5031.96	270.3	0.0369	-1.4325	2570.24	3.4100		
23.12.18	5031.62	270.3	0.0375	-1.4260	2570.58	3.4100		
23.12.20	5032.12	270.3	0.0381	-1.4196	2570.08	3.4099		
23.12.22	5031.67	270.3	0.0386	-1.4133	2570.53	3.4100		
23.12.24	5031.07	270.3	0.0392	-1.4071	2571.13	3.4101		
23.12.26	5030.33	270.3	0.0397	-1.4010	2571.67	3.4102		
23.12.28	5030.55	270.3	0.0403	-1.3949	2571.65	3.4102		
23.12.30	5030.50	270.3	0.0408	-1.3890	2571.70	3.4102		
23.12.32	5030.02	270.3	0.0414	-1.3831	2572.18	3.4103		
23.12.34	5029.56	270.3	0.0419	-1.3773	2572.64	3.4104		
23.12.36	5029.54	270.3	0.0425	-1.3716	2572.66	3.4104		
23.12.38	5029.60	270.3	0.0431	-1.3660	2572.60	3.4104		
23.12.40	5029.31	270.3	0.0436	-1.3604	2572.89	3.4104		
23.12.42	5028.91	270.3	0.0442	-1.3549	2573.29	3.4105		
23.12.44	5028.44	270.3	0.0447	-1.3495	2573.80	3.4106		
23.12.46	5029.21	270.3	0.0453	-1.3441	2572.99	3.4104		
23.12.48	5029.19	270.3	0.0458	-1.3388	2573.01	3.4104		

Choke size 12/64 adj.

FLOPETROL
PRESSURE & TEMPERATURE CALCULATIONS

TIME HR:MN:SS	PRESS. PSIA	TEMP. DEG.F	DEL.T (HOURS)	LOG DEL.T	DEL.P PSIA	LOG DEL.P	LOG T+DEL.T DEL.T	REMARKS
23.12.50	5028.68	270.3	0.0464	-1.3336	2573.52	3.4105		
23.12.52	5028.22	270.3	0.0469	-1.3284	2573.98	3.4106		
23.12.54	5028.29	270.3	0.0475	-1.3233	2573.91	3.4106		
23.12.56	5028.55	270.3	0.0481	-1.3183	2573.65	3.4105		
23.12.58	5028.06	270.3	0.0486	-1.3133	2574.14	3.4106		
23.13.0	5027.92	270.3	0.0492	-1.3083	2574.28	3.4107		
23.13.2	5027.94	270.3	0.0497	-1.3034	2574.26	3.4107		
23.13.4	5027.97	270.3	0.0503	-1.2986	2574.23	3.4106		
23.13.6	5027.86	270.3	0.0508	-1.2939	2574.34	3.4107		
23.13.8	5027.62	270.3	0.0514	-1.2891	2574.58	3.4107		
23.13.10	5027.57	270.3	0.0519	-1.2845	2574.63	3.4107		
23.13.12	5027.59	270.3	0.0525	-1.2798	2574.61	3.4107		
23.13.14	5027.59	270.3	0.0531	-1.2753	2574.61	3.4107		
23.13.16	5027.49	270.3	0.0536	-1.2707	2574.71	3.4107		
23.13.18	5027.15	270.3	0.0542	-1.2663	2575.05	3.4108		
23.13.20	5027.19	270.3	0.0547	-1.2618	2575.01	3.4108		
23.13.22	5027.38	270.3	0.0553	-1.2574	2574.83	3.4107		
23.13.24	5027.46	270.3	0.0558	-1.2531	2574.74	3.4107		
23.13.26	5027.31	270.3	0.0564	-1.2488	2574.89	3.4108		
23.13.28	5027.25	270.3	0.0569	-1.2445	2574.95	3.4108		
23.13.30	5027.34	270.3	0.0575	-1.2403	2574.87	3.4108		
23.13.32	5027.29	270.3	0.0581	-1.2362	2574.91	3.4108		
23.13.34	5026.97	270.3	0.0586	-1.2320	2575.23	3.4108		
23.13.36	5026.96	270.3	0.0592	-1.2279	2575.24	3.4108		
23.13.38	5027.19	270.3	0.0597	-1.2239	2575.01	3.4108		
23.13.40	5027.24	270.3	0.0603	-1.2198	2574.96	3.4108		
23.13.42	5027.16	270.3	0.0608	-1.2159	2575.04	3.4108		
23.13.44	5027.11	270.3	0.0614	-1.2119	2575.09	3.4108		
23.13.46	5027.15	270.3	0.0619	-1.2080	2575.05	3.4108		
23.13.48	5027.28	270.3	0.0625	-1.2041	2574.93	3.4108		
23.13.50	5027.26	270.3	0.0631	-1.2003	2574.94	3.4108		
23.13.52	5027.02	270.3	0.0636	-1.1965	2575.18	3.4108		
23.13.54	5026.92	270.3	0.0642	-1.1927	2575.28	3.4108		
23.13.56	5027.26	270.3	0.0647	-1.1889	2574.94	3.4108		
23.13.58	5027.36	270.3	0.0653	-1.1852	2574.84	3.4108		
23.14.0	5027.30	270.3	0.0658	-1.1816	2574.90	3.4108		
23.14.2	5027.07	270.3	0.0664	-1.1779	2575.13	3.4108		
23.14.4	5027.21	270.3	0.0669	-1.1743	2574.99	3.4108		
23.14.6	5027.35	270.3	0.0675	-1.1707	2574.85	3.4108		
23.14.8	5027.36	270.3	0.0681	-1.1671	2574.84	3.4108		
23.14.10	5027.24	270.3	0.0686	-1.1636	2574.96	3.4108		
23.14.12	5027.26	270.3	0.0692	-1.1601	2574.94	3.4108		



FLOPETROL
PRESSURE & TEMPERATURE CALCULATIONS

SECTION 2
PAGE 5
REPAIRS

TIME	HR. MN. SS	PRESS. PSIA	TEMP. DEG. F	DEL. T (HOURS)	LOG DEL. T	DEL. P PSIA	LOG DEL. P	LOG T DEL. T DEL. T	REPAIRS
23.14.14		5027.15	270.3	0.0697	-1.1566	2575.05	3.4108		
23.14.16		5027.27	270.3	0.0703	-1.1532	2574.93	3.4108		
23.14.18		5027.36	270.3	0.0708	-1.1498	2574.84	3.4108		
23.14.20		5027.19	270.3	0.0714	-1.1464	2575.01	3.4108		
23.14.22		5027.18	270.3	0.0719	-1.1430	2575.02	3.4108		
23.14.24		5027.23	270.3	0.0725	-1.1397	2574.98	3.4108		
23.14.26		5027.30	270.3	0.0731	-1.1363	2574.90	3.4108		
23.14.28		5027.37	270.3	0.0736	-1.1331	2574.83	3.4107		
23.14.30		5027.31	270.3	0.0742	-1.1298	2574.89	3.4108		
23.14.32		5027.18	270.3	0.0747	-1.1266	2575.02	3.4108		
23.14.34		5027.18	270.3	0.0753	-1.1233	2575.02	3.4108		
23.14.36		5027.22	270.3	0.0758	-1.1201	2574.98	3.4108		
23.14.38		5027.19	270.3	0.0764	-1.1170	2575.01	3.4108		
23.14.40		5027.14	270.3	0.0769	-1.1138	2575.06	3.4108		
23.14.42		5027.17	270.3	0.0775	-1.1107	2575.04	3.4108		
23.14.44		5027.22	270.3	0.0781	-1.1076	2574.98	3.4108		
23.14.46		5027.22	270.3	0.0786	-1.1045	2574.98	3.4108		
23.14.48		5027.32	270.3	0.0792	-1.1015	2574.88	3.4108		
23.14.50		5027.36	270.3	0.0797	-1.0984	2574.84	3.4108		
23.14.52		5027.35	270.3	0.0803	-1.0954	2574.85	3.4108		
23.14.54		5027.32	270.3	0.0808	-1.0924	2574.88	3.4108		
23.14.56		5027.32	270.3	0.0814	-1.0894	2574.88	3.4108		
23.14.58		5027.43	270.3	0.0819	-1.0865	2574.77	3.4107		
23.15.00		5027.30	270.3	0.0825	-1.0835	2574.90	3.4108		
23.15.02		5027.30	270.3	0.0831	-1.0806	2574.90	3.4108		
23.15.04		5027.26	270.3	0.0836	-1.0777	2574.94	3.4108		
23.15.06		5027.23	270.3	0.0842	-1.0749	2574.97	3.4108		
23.15.08		5027.20	270.3	0.0847	-1.0720	2575.00	3.4108		
23.15.10		5027.35	270.3	0.0853	-1.0692	2574.85	3.4108		
23.15.12		5027.36	270.3	0.0858	-1.0663	2574.84	3.4108		
23.15.14		5027.25	270.3	0.0864	-1.0635	2574.95	3.4108		
23.15.16		5027.28	270.3	0.0869	-1.0608	2574.92	3.4108		
23.15.18		5027.27	270.3	0.0875	-1.0580	2574.93	3.4108		
23.15.20		5027.29	270.3	0.0881	-1.0552	2574.91	3.4108		
23.15.22		5027.40	270.3	0.0886	-1.0525	2574.80	3.4107		
23.15.24		5027.31	270.3	0.0892	-1.0498	2574.89	3.4108		
23.15.26		5027.33	270.3	0.0897	-1.0471	2574.87	3.4108		
23.15.28		5027.30	270.3	0.0903	-1.0444	2574.90	3.4108		
23.15.30		5027.26	270.3	0.0908	-1.0418	2574.94	3.4108		
23.15.32		5027.27	270.3	0.0914	-1.0391	2574.93	3.4108		
23.15.34		5027.16	270.3	0.0919	-1.0365	2575.04	3.4108		
23.15.36		5027.21	270.3	0.0925	-1.0339	2574.99	3.4108		



FLOPETROL
PRESSURE & TEMPERATURE CALCULATIONS

SECTION 2
PAGE 6

TIME	HR. MIN. SS	PRESS. PSIA	TEMP. DEG. F	DEL. T (HOURS)	LOG DEL. T	DEL. P PSIA	LOG DEL. P	LOG T-DEL. T DEL. T	REMARKS
23.15.38		5027.33	270.3	0.0931	-1.0313	2574.87	3.4108		
23.15.40		5027.36	270.3	0.0936	-1.0287	2574.84	3.4108		
23.15.42		5027.24	270.3	0.0942	-1.0261	2574.96	3.4108		
23.15.44		5027.25	270.3	0.0947	-1.0235	2574.95	3.4108		
23.15.46		5027.27	270.3	0.0953	-1.0210	2574.94	3.4108		
23.15.48		5027.26	270.3	0.0958	-1.0185	2574.92	3.4108		
23.15.50		5027.29	270.3	0.0964	-1.0160	2574.91	3.4108		
23.15.52		5027.30	270.3	0.0969	-1.0135	2574.90	3.4108		
23.15.54		5027.32	270.3	0.0975	-1.0110	2574.89	3.4108		
23.15.56		5027.33	270.3	0.0981	-1.0085	2574.87	3.4108		
23.15.58		5027.34	270.3	0.0986	-1.0061	2574.86	3.4108		
23.16.0		5027.35	269.4	0.0992	-1.0036	2574.85	3.4108		
23.16.2		5027.28	269.4	0.0997	-1.0012	2574.92	3.4108		
23.16.4		5027.22	269.4	0.1003	-0.9988	2574.98	3.4108		
23.16.6		5027.15	269.4	0.1008	-0.9964	2575.05	3.4108		
23.16.8		5027.08	269.4	0.1014	-0.9940	2575.12	3.4108		
23.16.10		5027.02	269.4	0.1019	-0.9916	2575.18	3.4108		
23.16.12		5026.95	269.4	0.1025	-0.9893	2575.25	3.4108		
23.16.14		5026.89	269.4	0.1031	-0.9869	2575.31	3.4108		
23.16.16		5026.82	269.4	0.1036	-0.9846	2575.38	3.4108		
23.16.18		5026.83	269.4	0.1042	-0.9823	2575.37	3.4108		
23.16.20		5026.84	269.4	0.1047	-0.9800	2575.36	3.4108		
23.16.22		5026.85	269.4	0.1053	-0.9777	2575.35	3.4108		
23.16.24		5026.86	269.4	0.1058	-0.9754	2575.34	3.4108		
23.16.26		5026.87	269.4	0.1064	-0.9731	2575.33	3.4108		
23.16.28		5026.86	269.4	0.1069	-0.9708	2575.32	3.4108		
23.16.30		5026.89	269.4	0.1075	-0.9686	2575.32	3.4108		
23.16.32		5026.87	269.4	0.1081	-0.9664	2575.33	3.4108		
23.16.34		5026.83	269.4	0.1086	-0.9641	2575.37	3.4108		
23.16.36		5026.78	269.4	0.1092	-0.9619	2575.42	3.4108		
23.16.38		5026.74	269.4	0.1097	-0.9597	2575.46	3.4109		
23.16.40		5026.70	269.4	0.1103	-0.9575	2575.50	3.4109		
23.16.42		5026.66	269.4	0.1108	-0.9553	2575.54	3.4109		
23.16.44		5026.61	269.4	0.1114	-0.9532	2575.59	3.4109		
23.16.46		5026.57	269.4	0.1119	-0.9510	2575.63	3.4109		
23.16.48		5026.53	269.4	0.1125	-0.9488	2575.67	3.4109		
23.16.50		5026.50	269.4	0.1131	-0.9467	2575.70	3.4109		
23.16.52		5026.47	269.4	0.1136	-0.9446	2575.73	3.4109		
23.16.54		5026.44	269.4	0.1142	-0.9425	2575.76	3.4109		
23.16.56		5026.41	269.4	0.1147	-0.9404	2575.79	3.4109		
23.16.58		5026.38	269.4	0.1153	-0.9383	2575.82	3.4109		
23.17.0		5026.35	269.4	0.1156	-0.9362	2575.85	3.4109		

FLOPETROL
PRESSURE & TEMPERATURE CALCULATIONS

SECTION 2
PAGE 7
REMARKS

TIME HR. MIN. SS	PRESS. PSIA	TEMP. DEG. F	DEL. T (HOURS)	LOG DEL. T	DEL. P PSIA	IOG DEL. P	IOG T-DEL. T DEL. T	REMARKS
23.17. 2	5026.30	269.4	0.1164	-0.9341	2575.82	3.4109		
23.17. 4	5026.42	269.4	0.1169	-0.9320	2575.78	3.4109		
23.17. 6	5026.45	269.4	0.1175	-0.9300	2575.75	3.4109		
23.17. 8	5026.49	269.4	0.1181	-0.9279	2575.71	3.4109		
23.17.10	5026.52	269.4	0.1186	-0.9259	2575.68	3.4109		
23.17.12	5026.56	269.4	0.1192	-0.9238	2575.64	3.4109		
23.17.14	5026.59	269.4	0.1197	-0.9218	2575.61	3.4109		
23.17.16	5026.59	269.4	0.1203	-0.9198	2575.61	3.4109		
23.17.18	5026.55	269.4	0.1208	-0.9178	2575.65	3.4109		
23.17.20	5026.52	269.4	0.1214	-0.9158	2575.68	3.4109		
23.17.22	5026.48	269.4	0.1219	-0.9138	2575.72	3.4109		
23.17.24	5026.44	269.4	0.1225	-0.9119	2575.76	3.4109		
23.17.26	5026.40	269.4	0.1231	-0.9099	2575.80	3.4109		
23.17.28	5026.37	269.4	0.1236	-0.9079	2575.83	3.4109		
23.17.30	5026.33	269.4	0.1242	-0.9060	2575.87	3.4109		
23.17.32	5026.33	269.4	0.1247	-0.9041	2575.87	3.4109		
23.17.34	5026.33	269.4	0.1253	-0.9021	2575.87	3.4109		
23.17.36	5026.33	269.4	0.1258	-0.9002	2575.87	3.4109		
23.17.38	5026.34	269.4	0.1264	-0.8983	2575.87	3.4109		
23.17.40	5026.34	269.4	0.1269	-0.8964	2575.86	3.4109		
23.17.42	5026.34	269.4	0.1275	-0.8945	2575.86	3.4109		
23.17.44	5026.34	269.4	0.1281	-0.8926	2575.86	3.4109		
23.17.46	5026.34	269.4	0.1286	-0.8907	2575.86	3.4109		
23.17.48	5026.30	269.4	0.1292	-0.8888	2575.90	3.4109		
23.17.50	5026.28	269.4	0.1297	-0.8870	2575.94	3.4109		
23.17.52	5026.22	269.4	0.1303	-0.8851	2575.98	3.4109		
23.17.54	5026.19	269.4	0.1308	-0.8833	2576.01	3.4109		
23.17.56	5026.15	269.4	0.1314	-0.8814	2576.05	3.4110		
23.17.58	5026.11	269.4	0.1319	-0.8796	2576.09	3.4110		
23.18. 0	5026.07	269.4	0.1325	-0.8778	2576.13	3.4110		
23.18. 2	5026.08	269.4	0.1331	-0.8760	2576.12	3.4110		
23.18. 4	5026.09	269.4	0.1336	-0.8742	2576.11	3.4110		
23.18. 6	5026.11	269.4	0.1342	-0.8724	2576.09	3.4110		
23.18. 8	5026.12	269.4	0.1347	-0.8706	2576.08	3.4110		
23.18.10	5026.13	269.4	0.1353	-0.8688	2576.07	3.4110		
23.18.12	5026.14	269.4	0.1358	-0.8670	2576.06	3.4110		
23.18.14	5026.15	269.4	0.1364	-0.8652	2576.05	3.4110		
23.18.16	5026.15	269.4	0.1369	-0.8635	2576.05	3.4110		
23.18.18	5026.13	269.4	0.1375	-0.8617	2576.07	3.4110		
23.18.20	5026.10	269.4	0.1381	-0.8599	2576.10	3.4110		
23.18.22	5026.08	269.4	0.1386	-0.8582	2576.12	3.4110		
23.18.24	5026.06	269.4	0.1392	-0.8565	2576.14	3.4110		

FLOPETROL
PRESSURE & TEMPERATURE CALCULATIONS

SECTION 2
PAGE 8

REMARKS

LOG DEL.P LOG T DEL.T
DEL.T

DEL.P
PSIA

LOG DEL.T

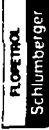
DEL.T
(HOURS)

TEMP.
DEG.F

PRESS.
PSIA

TIME
HR.MN.SS

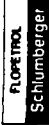
TIME HR.MN.SS	PRESS. PSIA	TEMP. DEG.F	DEL.T (HOURS)	LOG DEL.T	DEL.P PSIA	LOG DEL.P	LOG T DEL.T DEL.T
23.18.26	5026.04	269.4	0.1397	-0.8547	2576.16	3.4110	
23.18.28	5026.01	269.4	0.1403	-0.8530	2576.19	3.4110	
23.18.30	5025.99	269.4	0.1408	-0.8513	2576.21	3.4110	
23.18.32	5025.97	269.4	0.1414	-0.8496	2576.23	3.4110	
23.18.34	5025.96	269.4	0.1419	-0.8479	2576.24	3.4110	
23.18.36	5025.94	269.4	0.1425	-0.8462	2576.26	3.4110	
23.18.38	5025.93	269.4	0.1431	-0.8445	2576.27	3.4110	
23.18.40	5025.91	269.4	0.1436	-0.8428	2576.29	3.4110	
23.18.42	5025.90	269.4	0.1442	-0.8411	2576.30	3.4110	
23.18.44	5025.88	269.4	0.1447	-0.8395	2576.32	3.4110	
23.18.46	5025.87	269.4	0.1453	-0.8378	2576.33	3.4110	
23.18.48	5025.88	269.4	0.1458	-0.8361	2576.32	3.4110	
23.18.50	5025.90	269.4	0.1464	-0.8345	2576.30	3.4110	
23.18.52	5025.91	269.4	0.1469	-0.8328	2576.29	3.4110	
23.18.54	5025.92	269.4	0.1475	-0.8312	2576.28	3.4110	
23.18.56	5025.93	269.4	0.1481	-0.8296	2576.27	3.4110	
23.18.58	5025.95	269.4	0.1486	-0.8279	2576.25	3.4110	
23.19.00	5025.96	269.4	0.1492	-0.8263	2576.24	3.4110	
23.19.02	5025.94	269.4	0.1497	-0.8247	2576.26	3.4110	
23.19.04	5025.92	269.4	0.1503	-0.8231	2576.28	3.4110	
23.19.06	5025.90	269.4	0.1508	-0.8215	2576.30	3.4110	
23.19.08	5025.87	269.4	0.1514	-0.8199	2576.33	3.4110	
23.19.10	5025.85	269.4	0.1519	-0.8183	2576.35	3.4110	
23.19.12	5025.83	269.4	0.1525	-0.8167	2576.37	3.4110	
23.19.14	5025.81	269.4	0.1531	-0.8152	2576.39	3.4110	
23.19.16	5025.79	269.4	0.1536	-0.8136	2576.41	3.4110	
23.19.18	5025.77	269.4	0.1542	-0.8120	2576.41	3.4110	
23.19.20	5025.78	269.4	0.1547	-0.8104	2576.42	3.4110	
23.19.22	5025.78	269.4	0.1553	-0.8089	2576.42	3.4110	
23.19.24	5025.77	269.4	0.1558	-0.8073	2576.43	3.4110	
23.19.26	5025.77	269.4	0.1564	-0.8058	2576.43	3.4110	
23.19.28	5025.77	269.4	0.1569	-0.8043	2576.43	3.4110	
23.19.30	5025.76	269.4	0.1575	-0.8027	2576.44	3.4110	
23.19.32	5025.75	269.4	0.1581	-0.8012	2576.45	3.4110	
23.19.34	5025.74	269.4	0.1586	-0.7997	2576.46	3.4110	
23.19.36	5025.72	269.4	0.1592	-0.7981	2576.48	3.4110	
23.19.38	5025.71	269.4	0.1597	-0.7966	2576.49	3.4110	
23.19.40	5025.69	269.4	0.1603	-0.7951	2576.51	3.4110	
23.19.42	5025.68	269.4	0.1608	-0.7936	2576.52	3.4110	
23.19.44	5025.66	269.4	0.1614	-0.7921	2576.54	3.4110	
23.19.46	5025.65	269.4	0.1619	-0.7906	2576.55	3.4110	
23.19.48	5025.63	269.4	0.1625	-0.7891	2576.57	3.4110	



FLOPETROL
PRESSURE & TEMPERATURE CALCULATIONS

SECTION 2
PAGE 9

TIME HR. MIN. SS	PRESS. PSIA	TEMP. DEG. F	DEL. T (HOURS)	LOG DEL. T	DEL. P PSIA	LOG DEL. P	LOG T+DEL. T DEL. T	REMARKS
23.19.50	5025.61	269.4	0.1631	-0.7877	2576.59	3.4110		
23.20.0	5025.50	269.4	0.1658	-0.7803	2576.70	3.4111		
23.20.10	5025.51	269.4	0.1686	-0.7731	2576.69	3.4111		
23.20.20	5025.48	269.4	0.1714	-0.7660	2576.72	3.4111		
23.20.30	5025.41	269.4	0.1742	-0.7590	2576.79	3.4111		
23.20.40	5025.37	269.4	0.1769	-0.7522	2576.83	3.4111		
23.20.50	5025.27	269.4	0.1797	-0.7454	2576.93	3.4111		
23.21.0	5025.10	269.2	0.1825	-0.7387	2577.10	3.4111		
23.21.10	5025.29	269.2	0.1853	-0.7322	2576.91	3.4111		
23.21.20	5025.34	269.2	0.1881	-0.7257	2576.86	3.4111		
23.21.30	5025.26	269.2	0.1908	-0.7193	2576.94	3.4111		
23.21.40	5025.12	269.2	0.1936	-0.7131	2577.08	3.4111		
23.21.50	5024.95	269.2	0.1964	-0.7069	2577.25	3.4112		
23.22.0	5024.76	269.2	0.1992	-0.7008	2577.44	3.4112		
23.22.10	5024.79	269.2	0.2019	-0.6948	2577.42	3.4112		
23.22.20	5024.75	269.2	0.2047	-0.6888	2577.45	3.4112		
23.22.30	5024.64	269.2	0.2075	-0.6830	2577.56	3.4112		
23.22.40	5024.54	269.2	0.2103	-0.6772	2577.66	3.4112		
23.22.50	5024.44	269.2	0.2131	-0.6715	2577.76	3.4112		
23.23.0	5024.33	269.2	0.2158	-0.6659	2577.87	3.4113		
23.23.10	5024.26	269.2	0.2186	-0.6603	2577.94	3.4113		
23.23.20	5024.19	269.2	0.2214	-0.6548	2578.01	3.4113		
23.23.30	5024.10	269.2	0.2242	-0.6494	2578.10	3.4113		
23.23.40	5024.05	269.2	0.2269	-0.6441	2578.15	3.4113		
23.23.50	5023.97	269.2	0.2297	-0.6388	2578.23	3.4113		
23.24.0	5023.84	269.2	0.2325	-0.6336	2578.36	3.4113		
23.24.10	5023.89	269.2	0.2353	-0.6284	2578.31	3.4113		
23.24.20	5023.93	269.2	0.2381	-0.6233	2578.27	3.4113		
23.24.30	5023.82	269.2	0.2408	-0.6183	2578.38	3.4113		
23.24.40	5023.89	269.2	0.2436	-0.6133	2578.31	3.4113		
23.24.50	5023.70	269.2	0.2464	-0.6084	2578.50	3.4114		
23.24.58	5023.70	269.2	0.2486	-0.6045	2578.50	3.4114		
23.25.0	5023.75	269.2	0.0000					
23.25.2	5023.57	269.2	0.0006	-3.2553	0.18			SHUT IN TIME 23.25.0
23.25.4	5023.55	269.2	0.0011	-2.9542	0.21			2.6542
23.25.6	5023.64	269.2	0.0017	-2.7782	0.11			2.3541
23.25.8	5023.69	269.2	0.0022	-2.6532	0.06			2.1790 FLOWING PRES. 5023.75
23.25.10	5023.69	269.2	0.0028	-2.5563	0.06			2.0550
23.25.12	5023.64	269.2	0.0033	-2.4771	0.11			1.9590
23.25.14	5023.65	269.2	0.0039	-2.4102	0.10			1.8808 FLOW TIME T
23.25.16	5023.75	269.2	0.0044	-2.3522	0.00			1.8148 (HOURS) 0.15.0
23.25.18	5023.73	269.2	0.0050	-2.3010	0.02			1.7578 1.7076



FLOPETROL
PRESSURE & TEMPERATURE CALCULATIONS

REMARKS

TIME HR.-MIN.-SS	PRESS. PSIA	TEMP. DEG.F	DEL.T (HOURS)	LOG DEL.T	DEL.P PSIA	LOG DEL.P	LOG T+DEL.T DEL.T
23.25.20	5023.58	269.2	0.0056	-2.2553	0.17	-0.7696	1.6628
23.25.22	5023.54	269.2	0.0061	-2.2139	0.21	-0.6776	1.6223
23.25.24	5023.64	269.2	0.0067	-2.1761	0.11	-0.9586	1.5855
23.25.26	5023.78	269.2	0.0072	-2.1413	0.03	-1.5229	1.5516
23.25.28	5023.57	269.2	0.0078	-2.1091	0.18	-0.7447	1.5204
23.25.30	5023.43	269.2	0.0083	-2.0792	0.32	-0.4949	1.4914
23.25.32	5023.47	269.2	0.0089	-2.0512	0.28	-0.5528	1.4643
23.25.34	5023.60	269.2	0.0094	-2.0248	0.15	-0.8239	1.4389
23.25.36	5023.65	269.2	0.0100	-2.0000	0.10	-1.0000	1.4150
23.25.38	5023.61	269.2	0.0106	-1.9765	0.14	-0.8539	1.3924
23.25.40	5023.46	269.2	0.0111	-1.9542	0.29	-0.5376	1.3711
23.25.42	5023.44	269.2	0.0117	-1.9331	0.31	-0.5086	1.3508
23.25.44	5023.65	269.2	0.0122	-1.9128	0.10	-1.0000	1.3315
23.25.46	5023.46	269.2	0.0128	-1.8935	0.29	-0.5376	1.3131
23.25.48	5023.38	269.2	0.0133	-1.8751	0.37	-0.4318	1.2956
23.25.50	5023.39	269.2	0.0139	-1.8573	0.36	-0.4437	1.2788
23.25.52	5023.37	269.2	0.0144	-1.8403	0.38	-0.4202	1.2626
23.25.54	5023.70	269.2	0.0150	-1.8239	0.05	-1.3010	1.2472
23.25.56	5023.45	269.2	0.0156	-1.8081	0.30	-0.5229	1.2323
23.25.58	5023.39	269.2	0.0161	-1.7929	0.37	-0.4318	1.2179
23.26.00	5023.33	269.2	0.0167	-1.7782	0.42	-0.3768	1.2041
23.26.02	5023.66	269.2	0.0172	-1.7639	0.09	-1.0458	1.1908
23.26.04	5023.45	269.2	0.0178	-1.7501	0.30	-0.5229	1.1779
23.26.06	5023.43	269.2	0.0183	-1.7368	0.32	-0.4949	1.1654
23.26.08	5023.46	269.4	0.0189	-1.7238	0.29	-0.5376	1.1534
23.26.10	5023.36	269.4	0.0194	-1.7112	0.39	-0.4089	1.1417
23.26.12	5023.60	269.4	0.0200	-1.6990	0.15	-0.8239	1.1303
23.26.14	5023.42	269.4	0.0206	-1.6871	0.33	-0.4815	1.1193
23.26.16	5023.44	269.4	0.0211	-1.6755	0.32	-0.4949	1.1086
23.26.18	5023.49	269.4	0.0217	-1.6642	0.26	-0.5850	1.0982
23.26.20	5023.40	269.4	0.0222	-1.6532	0.35	-0.4559	1.0881
23.26.22	5023.32	269.4	0.0228	-1.6425	0.43	-0.3665	1.0783
23.26.24	5023.29	269.4	0.0233	-1.6320	0.47	-0.3279	1.0687
23.26.26	5023.46	269.4	0.0239	-1.6218	0.29	-0.5376	1.0594
23.26.28	5023.79	269.4	0.0244	-1.6118	0.04	-1.3979	1.0503
23.26.30	5023.67	269.4	0.0250	-1.6021	0.08	-1.0969	1.0414
23.26.32	5023.48	269.4	0.0256	-1.5925	0.27	-0.5686	1.0327
23.26.34	5023.47	269.4	0.0261	-1.5832	0.28	-0.5528	1.0243
23.26.36	5023.53	269.4	0.0267	-1.5740	0.22	-0.6576	1.0160
23.26.38	5023.46	269.4	0.0272	-1.5651	0.29	-0.5376	1.0079
23.26.40	5023.35	269.4	0.0278	-1.5563	0.40	-0.3979	1.0000
23.26.42	5023.36	269.4	0.0283	-1.5477	0.40	-0.3979	0.9923



FLOETROL
PRESSURE & TEMPERATURE CALCULATIONS

TIME HR. MIN. SS	PRESS. PSIA	TEMP. DEG. F	DEL.T (HOURS)	LOG DEL.T	DEL.P PSIA	LOG DEL.P	LOG T-DEL.T DEL.T	REMARKS
23.26.44	5023.42	269.4	0.0289	-1.5393	0.33	-0.4815	0.9847	
23.26.46	5023.44	269.4	0.0294	-1.5310	0.31	-0.5086	0.9773	
23.26.48	5023.56	269.4	0.0300	-1.5229	0.19	-0.7212	0.9700	
23.26.50	5023.35	269.4	0.0306	-1.5149	0.40	-0.3979	0.9629	
23.26.52	5023.51	269.4	0.0311	-1.5071	0.24	-0.6198	0.9560	
23.26.54	5023.73	269.4	0.0317	-1.4994	0.02	-1.6990	0.9491	
23.26.56	5023.63	269.4	0.0322	-1.4918	0.12	-0.9208	0.9424	
23.26.58	5023.42	269.4	0.0328	-1.4844	0.33	-0.4815	0.9359	
23.27.0	5023.29	269.4	0.0333	-1.4771	0.46	-0.3372	0.9294	
23.27.2	5023.70	269.4	0.0339	-1.4699	0.05	-1.3010	0.9231	
23.27.4	5023.63	269.4	0.0344	-1.4629	0.12	-0.9208	0.9169	
23.27.6	5023.47	269.4	0.0350	-1.4559	0.28	-0.5528	0.9108	
23.27.8	5023.22	269.4	0.0356	-1.4491	0.53	-0.2757	0.9048	
23.27.10	5023.42	269.4	0.0361	-1.4424	0.33	-0.4815	0.8989	
23.27.12	5023.49	269.4	0.0367	-1.4357	0.26	-0.5850	0.8931	
23.27.14	5023.49	269.4	0.0372	-1.4292	0.26	-0.5850	0.8874	
23.27.16	5023.55	269.4	0.0378	-1.4228	0.20	-0.6990	0.8818	
23.27.18	5023.72	269.4	0.0383	-1.4164	0.03	-1.5229	0.8763	
23.27.20	5023.63	269.4	0.0389	-1.4102	0.12	-0.9208	0.8709	
23.27.22	5023.56	269.4	0.0394	-1.4040	0.19	-0.7212	0.8656	
23.27.24	5023.42	269.4	0.0400	-1.3979	0.33	-0.4815	0.8603	
23.27.26	5023.19	269.4	0.0406	-1.3919	0.56	-0.2518	0.8552	
23.27.28	5023.52	269.4	0.0411	-1.3860	0.23	-0.6383	0.8501	
23.27.30	5023.66	269.4	0.0417	-1.3802	0.09	-1.0458	0.8451	
23.27.32	5023.48	269.4	0.0422	-1.3745	0.27	-0.5686	0.8402	
23.27.34	5023.26	269.4	0.0428	-1.3688	0.49	-0.3098	0.8353	
23.27.36	5023.31	269.4	0.0433	-1.3632	0.44	-0.3565	0.8305	
23.27.38	5023.32	269.4	0.0439	-1.3576	0.43	-0.3665	0.8258	
23.27.40	5023.45	269.4	0.0444	-1.3522	0.30	-0.5229	0.8212	
23.27.42	5023.49	269.4	0.0450	-1.3468	0.26	-0.5850	0.8166	
23.27.44	5023.42	269.4	0.0456	-1.3415	0.33	-0.4815	0.8121	
23.27.46	5023.27	269.4	0.0461	-1.3362	0.48	-0.3188	0.8076	
23.27.48	5023.39	269.4	0.0467	-1.3310	0.36	-0.4437	0.8033	
23.27.50	5023.52	269.4	0.0472	-1.3259	0.23	-0.6383	0.7989	
23.27.52	5023.56	269.4	0.0478	-1.3208	0.19	-0.7212	0.7947	
23.27.54	5023.49	269.4	0.0483	-1.3158	0.26	-0.5850	0.7905	
23.27.56	5023.55	269.4	0.0489	-1.3108	0.20	-0.6990	0.7863	
23.27.58	5023.50	269.4	0.0494	-1.3059	0.25	-0.6021	0.7822	
23.28.0	5023.54	269.4	0.0500	-1.3010	0.21	-0.6778	0.7782	
23.28.2	5023.56	269.4	0.0506	-1.2962	0.17	-0.7696	0.7742	
23.28.4	5023.51	269.4	0.0511	-1.2915	0.24	-0.6198	0.7702	
23.28.6	5023.46	269.4	0.0517	-1.2868	0.29	-0.5376	0.7663	

FLOPETROL
PRESSURE & TEMPERATURE CALCULATIONS

TIME HR:MM:SS	PRESS. PSIA	TEMP. DEG.F	DEL.T (HOURS)	LOG DEL.T	DEL.P PSIA	LOG DEL.P	LOG T-DEL.T DEL.T	REMARKS
23.28.0	5023.53	269.4	0.0522	-1.2821	0.22	-0.6576	0.7625	
23.28.10	5023.54	269.4	0.0528	-1.2775	0.21	-0.6778	0.7587	
23.28.12	5023.55	269.4	0.0533	-1.2730	0.20	-0.6990	0.7549	
23.28.14	5023.54	269.4	0.0539	-1.2685	0.21	-0.6778	0.7512	
23.28.16	5023.51	269.4	0.0544	-1.2640	0.24	-0.6198	0.7476	
23.28.16	5023.56	269.4	0.0550	-1.2596	0.19	-0.7212	0.7439	
23.28.20	5023.44	269.4	0.0556	-1.2553	0.31	-0.5086	0.7404	
23.28.22	5023.46	269.4	0.0561	-1.2510	0.27	-0.5686	0.7368	
23.28.24	5023.58	269.4	0.0567	-1.2467	0.17	-0.7696	0.7333	
23.28.26	5023.59	269.4	0.0572	-1.2424	0.16	-0.7959	0.7299	
23.28.28	5023.48	269.4	0.0578	-1.2382	0.27	-0.5686	0.7265	
23.28.30	5023.41	269.4	0.0583	-1.2341	0.34	-0.4685	0.7231	
23.28.32	5023.46	269.4	0.0589	-1.2300	0.29	-0.5376	0.7198	
23.28.34	5023.57	269.4	0.0594	-1.2259	0.18	-0.7447	0.7165	
23.28.36	5023.65	269.4	0.0600	-1.2218	0.10	-1.0000	0.7132	
23.28.38	5023.71	269.4	0.0606	-1.2178	0.04	-1.3979	0.7100	
23.28.40	5023.41	269.4	0.0611	-1.2139	0.34	-0.4685	0.7068	
23.28.42	5023.42	269.4	0.0617	-1.2099	0.33	-0.4815	0.7036	
23.28.44	5023.36	269.4	0.0622	-1.2061	0.39	-0.4085	0.7005	
23.28.46	5023.44	269.4	0.0628	-1.2022	0.31	-0.5086	0.6974	
23.28.48	5023.74	269.4	0.0633	-1.1984	0.01	-2.0000	0.6944	
23.28.50	5023.62	269.4	0.0639	-1.1946	0.13	-0.8861	0.6914	
23.28.52	5023.43	269.4	0.0644	-1.1908	0.32	-0.4949	0.6884	
23.28.54	5023.35	269.4	0.0650	-1.1871	0.40	-0.3979	0.6854	
23.28.56	5023.38	269.4	0.0656	-1.1834	0.37	-0.4318	0.6825	
23.28.58	5023.72	269.4	0.0661	-1.1797	0.03	-1.5229	0.6796	
23.29.0	5023.62	269.4	0.0667	-1.1761	0.13	-0.8861	0.6767	
23.29.2	5023.47	269.4	0.0672	-1.1725	0.28	-0.5528	0.6739	
23.29.4	5023.59	269.4	0.0678	-1.1689	0.16	-0.7959	0.6710	
23.29.6	5023.69	269.4	0.0683	-1.1654	0.06	-1.2218	0.6682	
23.29.8	5023.73	269.4	0.0689	-1.1619	0.02	-1.6990	0.6655	
23.29.10	5023.72	269.4	0.0694	-1.1584	0.02	-1.6990	0.6628	
23.29.12	5023.52	269.4	0.0700	-1.1549	0.23	-0.6383	0.6601	
23.29.14	5023.55	269.4	0.0706	-1.1515	0.20	-0.6990	0.6574	
23.29.16	5023.65	269.4	0.0711	-1.1481	0.11	-0.9586	0.6547	
23.29.18	5023.76	269.4	0.0717	-1.1447	0.01	-2.0000	0.6521	
23.29.20	5023.82	269.4	0.0722	-1.1413	0.07	-1.1549	0.6495	
23.29.22	5023.70	269.4	0.0728	-1.1380	0.05	-1.3010	0.6469	
23.29.24	5023.66	269.4	0.0733	-1.1347	0.09	-1.0458	0.6443	
23.29.26	5023.71	269.4	0.0739	-1.1314	0.04	-1.3979	0.6418	
23.29.28	5023.76	269.4	0.0744	-1.1282	0.01	-2.0000	0.6393	
23.29.30	5023.84	269.4	0.0750	-1.1249	0.09	-1.0458	0.6368	

FLUETROL
PRESSURE & TEMPERATURE CALCULATIONS

REMARKS

TIME HR.MN.SS	PRESS. PSIA	TEMP. DEG.F	DEL.T (HOURS)	LOG DEL.T	DEL.P PSIA	LOG DEL.P	LOG T-DEL.T DEL.T	REMARKS
23.29.32	5023.74	269.4	0.0756	-1.1217	0.01	-2.0000	0.6344	
23.29.34	5023.72	269.4	0.0761	-1.1166	0.04	-1.3979	0.6319	
23.29.36	5023.78	269.4	0.0767	-1.1154	0.03	-1.5229	0.6295	
23.29.38	5023.87	269.4	0.0772	-1.1123	0.12	-0.9208	0.6271	
23.29.40	5023.84	269.4	0.0778	-1.1091	0.09	-1.0458	0.6247	
23.29.42	5023.79	269.4	0.0783	-1.1061	0.05	-1.3010	0.6224	
23.29.44	5023.84	269.4	0.0789	-1.1030	0.09	-1.0458	0.6200	
23.29.46	5023.98	269.4	0.0794	-1.0999	0.23	-0.6383	0.6177	
23.29.48	5023.98	269.4	0.0800	-1.0969	0.23	-0.6383	0.6154	
23.29.50	5023.71	269.4	0.0806	-1.0939	0.04	-1.3979	0.6131	
23.29.52	5023.85	269.4	0.0811	-1.0909	0.10	-1.0000	0.6109	
23.29.54	5024.09	269.4	0.0817	-1.0880	0.34	-0.4685	0.6087	
23.29.56	5024.00	269.4	0.0822	-1.0850	0.25	-0.6021	0.6064	
23.29.58	5023.85	269.4	0.0828	-1.0821	0.10	-1.0000	0.6042	
23.30.0	5023.70	269.4	0.0833	-1.0792	0.05	-1.3010	0.6021	
23.30.2	5024.03	269.4	0.0839	-1.0763	0.28	-0.5528	0.5999	
23.30.4	5024.06	269.4	0.0844	-1.0734	0.31	-0.5086	0.5978	
23.30.6	5024.01	269.4	0.0850	-1.0706	0.26	-0.5850	0.5956	
23.30.8	5023.88	269.4	0.0856	-1.0678	0.13	-0.8861	0.5935	
23.30.10	5023.79	269.4	0.0861	-1.0649	0.04	-1.3979	0.5914	
23.30.12	5024.01	269.4	0.0867	-1.0621	0.26	-0.5850	0.5893	
23.30.14	5024.16	269.4	0.0872	-1.0594	0.41	-0.3872	0.5873	
23.30.16	5024.12	269.4	0.0878	-1.0566	0.37	-0.4318	0.5852	
23.30.18	5023.98	269.4	0.0883	-1.0539	0.23	-0.6383	0.5832	
23.30.20	5023.85	269.4	0.0889	-1.0512	0.10	-1.0000	0.5812	
23.30.22	5023.96	269.4	0.0894	-1.0484	0.21	-0.6778	0.5792	
23.30.24	5024.13	269.4	0.0900	-1.0458	0.38	-0.4202	0.5772	
23.30.26	5024.36	269.4	0.0906	-1.0431	0.61	-0.2147	0.5753	
23.30.28	5024.16	269.4	0.0911	-1.0404	0.41	-0.3872	0.5733	
23.30.30	5024.05	269.4	0.0917	-1.0378	0.30	-0.5229	0.5714	
23.30.32	5024.02	269.4	0.0922	-1.0352	0.27	-0.5686	0.5695	
23.30.34	5024.17	269.4	0.0928	-1.0326	0.42	-0.3768	0.5676	
23.30.36	5024.42	269.4	0.0933	-1.0300	0.67	-0.1739	0.5657	
23.30.38	5024.34	269.4	0.0939	-1.0274	0.59	-0.2291	0.5638	
23.30.40	5024.20	269.4	0.0944	-1.0248	0.45	-0.3468	0.5619	
23.30.42	5024.06	269.4	0.0950	-1.0223	0.31	-0.5086	0.5601	
23.30.44	5024.15	269.4	0.0956	-1.0197	0.40	-0.3979	0.5583	
23.30.46	5024.28	269.4	0.0961	-1.0172	0.53	-0.2757	0.5564	
23.30.48	5024.34	269.4	0.0967	-1.0147	0.59	-0.2291	0.5546	
23.30.50	5024.31	269.4	0.0972	-1.0122	0.56	-0.2518	0.5528	
23.30.52	5024.29	269.4	0.0978	-1.0098	0.54	-0.2676	0.5511	
23.30.54	5024.26	269.4	0.0983	-1.0073	0.52	-0.2840	0.5493	

FLOPETROL
PRESSURE & TEMPERATURE CALCULATIONS

REMARKS

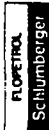
TIME HR. MIN. SS	PIESS. PSIA	TEMP. DEG. F	DEL.T (HOURS)	LOG DEL.T	DEL.P PSIA	LOG DEL.P	LOG T-DEL.T DEL.T
23.30.56	5024.29	269.4	0.0989	-1.0049	0.54	-0.2676	0.5475
23.30.58	5024.36	269.4	0.0994	-1.0024	0.61	-0.2147	0.5458
23.31.0	5024.45	269.4	0.1000	-1.0000	0.70	-0.1549	0.5441
23.31.2	5024.32	269.4	0.1006	-0.9976	0.57	-0.2441	0.5424
23.31.4	5024.35	269.4	0.1011	-0.9952	0.60	-0.2218	0.5406
23.31.6	5024.50	269.4	0.1017	-0.9928	0.75	-0.1249	0.5390
23.31.8	5024.61	269.4	0.1022	-0.9905	0.86	-0.0655	0.5373
23.31.10	5024.52	269.4	0.1028	-0.9881	0.77	-0.1135	0.5356
23.31.12	5024.43	269.4	0.1033	-0.9858	0.68	-0.1675	0.5339
23.31.14	5024.46	269.4	0.1039	-0.9834	0.71	-0.1487	0.5323
23.31.16	5024.60	269.4	0.1044	-0.9811	0.85	-0.0706	0.5307
23.31.18	5024.67	269.4	0.1050	-0.9788	0.92	-0.0362	0.5290
23.31.20	5024.59	269.4	0.1056	-0.9765	0.84	-0.0757	0.5274
23.31.22	5024.50	269.4	0.1061	-0.9742	0.76	-0.1192	0.5258
23.31.24	5024.51	269.4	0.1067	-0.9720	0.76	-0.1192	0.5242
23.31.26	5024.60	269.4	0.1072	-0.9697	0.85	-0.0706	0.5227
23.31.28	5024.60	269.4	0.1078	-0.9675	0.85	-0.0706	0.5211
23.31.30	5024.62	269.4	0.1083	-0.9652	0.87	-0.0605	0.5195
23.31.32	5024.66	269.4	0.1089	-0.9630	0.91	-0.0410	0.5180
23.31.34	5024.73	269.4	0.1094	-0.9608	0.98	-0.0088	0.5164
23.31.36	5024.53	269.4	0.1100	-0.9586	0.78	-0.1079	0.5149
23.31.38	5024.42	269.4	0.1106	-0.9564	0.67	-0.1739	0.5134
23.31.40	5024.76	269.4	0.1111	-0.9542	1.01	0.0043	0.5119
23.31.42	5025.08	269.4	0.1117	-0.9521	1.33	0.1239	0.5104
23.31.44	5024.91	269.4	0.1122	-0.9499	1.16	0.0645	0.5089
23.31.46	5024.65	269.4	0.1128	-0.9478	0.90	-0.0458	0.5074
23.31.48	5024.62	269.4	0.1133	-0.9456	0.87	-0.0605	0.5059
23.31.50	5024.82	269.4	0.1139	-0.9435	1.07	0.0294	0.5045
23.31.52	5025.04	269.4	0.1144	-0.9414	1.29	0.1106	0.5030
23.31.54	5024.95	269.4	0.1150	-0.9393	1.20	0.0792	0.5016
23.31.56	5024.89	269.4	0.1156	-0.9372	1.14	0.0569	0.5002
23.31.58	5024.94	269.4	0.1161	-0.9351	1.19	0.0755	0.4987
23.32.0	5025.09	269.4	0.1167	-0.9331	1.34	0.1271	0.4973
23.32.2	5024.97	269.4	0.1172	-0.9310	1.22	0.0864	0.4959
23.32.4	5024.97	269.4	0.1178	-0.9289	1.22	0.0864	0.4945
23.32.6	5024.90	269.4	0.1183	-0.9269	1.16	0.0645	0.4931
23.32.8	5024.88	269.4	0.1189	-0.9249	1.13	0.0531	0.4918
23.32.10	5024.97	269.4	0.1194	-0.9228	1.22	0.0864	0.4904
23.32.12	5024.96	269.4	0.1200	-0.9208	1.21	0.0828	0.4890
23.32.14	5025.10	269.4	0.1206	-0.9188	1.35	0.1303	0.4877
23.32.16	5025.16	269.4	0.1211	-0.9168	1.41	0.1492	0.4863
23.32.18	5025.10	269.4	0.1217	-0.9148	1.35	0.1303	0.4850



FLOPETROL
PRESSURE & TEMPERATURE CALCULATIONS

SECTION 2
PAGE 15

TIME HR:MM:SS	PRESS. PSIA	TEMP. DEG. F	DEL.T (HOURS)	LOG DEL.T	DEL.P PSIA	LOG DEL.P	LOG T-DEL.T DEL.T	REMARKS
23.32.20	5025.01	269.4	0.1222	-0.9128	1.26	0.1004	0.4837	
23.32.22	5025.16	269.4	0.1228	-0.9109	1.41	0.1492	0.4823	
23.32.24	5025.25	269.4	0.1233	-0.9089	1.50	0.1761	0.4810	
23.32.26	5025.28	269.4	0.1239	-0.9070	1.53	0.1847	0.4797	
23.32.28	5025.32	269.4	0.1244	-0.9050	1.57	0.1959	0.4784	
23.32.30	5025.26	269.4	0.1250	-0.9031	1.51	0.1790	0.4771	
23.32.32	5025.15	269.4	0.1256	-0.9012	1.40	0.1461	0.4758	
23.32.34	5025.33	269.4	0.1261	-0.8992	1.58	0.1987	0.4746	
23.32.36	5025.51	269.4	0.1267	-0.8973	1.76	0.2455	0.4733	
23.32.38	5025.41	269.4	0.1272	-0.8954	1.66	0.2201	0.4720	
23.32.40	5025.36	269.4	0.1278	-0.8935	1.61	0.2068	0.4708	
23.32.42	5025.38	269.4	0.1283	-0.8917	1.63	0.2122	0.4695	
23.32.44	5025.51	269.4	0.1289	-0.8898	1.76	0.2455	0.4683	
23.32.46	5025.66	269.4	0.1294	-0.8879	1.91	0.2810	0.4671	
23.32.48	5025.80	269.4	0.1300	-0.8861	2.05	0.3118	0.4658	
23.32.50	5025.80	269.4	0.1306	-0.8842	2.05	0.3118	0.4646	
23.32.52	5025.69	269.4	0.1311	-0.8824	1.94	0.2878	0.4634	
23.32.54	5025.70	269.4	0.1317	-0.8805	1.95	0.2900	0.4622	
23.32.56	5025.79	269.4	0.1322	-0.8787	2.04	0.3096	0.4610	
23.32.58	5025.88	269.4	0.1328	-0.8769	2.13	0.3284	0.4598	
23.33.00	5026.07	269.4	0.1333	-0.8751	2.32	0.3655	0.4586	
23.33.02	5025.81	269.4	0.1339	-0.8733	2.06	0.3139	0.4575	
23.33.04	5025.88	269.4	0.1344	-0.8715	2.13	0.3284	0.4563	
23.33.06	5026.05	269.4	0.1350	-0.8697	2.30	0.3617	0.4551	
23.33.08	5026.30	269.4	0.1356	-0.8679	2.55	0.4065	0.4540	
23.33.10	5026.14	269.4	0.1361	-0.8661	2.39	0.3784	0.4528	
23.33.12	5026.00	269.4	0.1367	-0.8643	2.25	0.3522	0.4517	
23.33.14	5026.01	269.4	0.1372	-0.8626	2.26	0.3541	0.4505	
23.33.16	5026.18	269.4	0.1378	-0.8608	2.43	0.3856	0.4494	
23.33.18	5026.39	269.4	0.1383	-0.8591	2.64	0.4216	0.4483	
23.33.20	5026.30	269.4	0.1389	-0.8573	2.55	0.4065	0.4472	
23.33.22	5026.25	269.4	0.1394	-0.8556	2.50	0.3979	0.4460	
23.33.24	5026.24	269.4	0.1400	-0.8539	2.49	0.3962	0.4449	
23.33.26	5026.26	269.4	0.1406	-0.8522	2.51	0.3997	0.4438	
23.33.28	5026.28	269.4	0.1411	-0.8504	2.53	0.4031	0.4427	
23.33.30	5026.55	269.4	0.1417	-0.8487	2.80	0.4472	0.4416	
23.33.32	5026.62	269.4	0.1422	-0.8470	2.87	0.4579	0.4406	
23.33.34	5026.55	269.4	0.1428	-0.8453	2.80	0.4472	0.4395	
23.33.36	5026.54	269.4	0.1433	-0.8437	2.79	0.4456	0.4384	
23.33.38	5026.82	269.4	0.1439	-0.8420	3.07	0.4871	0.4373	
23.33.40	5026.73	269.4	0.1444	-0.8403	2.98	0.4742	0.4363	
23.33.42	5026.67	269.4	0.1450	-0.8386	2.92	0.4654	0.4352	



FLOPETROL

PRESSURE & TEMPERATURE CALCULATIONS

SECTION 2
PAGE 16

REMARKS

TIME HR. MIN. SS	PRESS. PSIA	TEMP. DEG. F	DEL. T (HOURS)	LOG DEL. T	DEL. P PSIA	LOG DEL. P	LOG T-DEL. T DEL. T	REMARKS
23.33.44	5026.62	269.4	0.1456	-0.8370	2.87	0.4579	0.4342	
23.33.46	5026.81	269.4	0.1461	-0.8353	3.06	0.4857	0.4331	
23.33.48	5026.68	269.4	0.1467	-0.8337	3.13	0.4955	0.4321	
23.33.50	5026.93	269.4	0.1472	-0.8320	3.18	0.5024	0.4311	
23.33.52	5026.96	269.4	0.1478	-0.8304	3.21	0.5065	0.4300	
23.33.54	5027.00	269.4	0.1483	-0.8288	3.25	0.5119	0.4290	
23.33.56	5026.86	269.4	0.1489	-0.8271	3.11	0.4928	0.4280	
23.33.58	5026.90	269.4	0.1494	-0.8255	3.15	0.4983	0.4270	
23.34.0	5027.39	269.4	0.1500	-0.8239	3.64	0.5611	0.4260	
23.34.2	5027.30	269.4	0.1506	-0.8223	3.55	0.5502	0.4250	
23.34.4	5027.22	269.4	0.1511	-0.8207	3.47	0.5403	0.4240	
23.34.6	5027.19	269.4	0.1517	-0.8191	3.44	0.5366	0.4230	
23.34.8	5027.20	269.4	0.1522	-0.8175	3.45	0.5378	0.4220	
23.34.10	5027.64	269.4	0.1528	-0.8159	3.89	0.5899	0.4210	
23.34.12	5027.73	269.4	0.1533	-0.8144	3.99	0.6010	0.4200	
23.34.14	5027.48	269.4	0.1539	-0.8128	3.73	0.5717	0.4191	
23.34.16	5027.21	269.4	0.1544	-0.8112	3.46	0.5391	0.4181	
23.34.18	5027.79	269.4	0.1550	-0.8097	4.04	0.6064	0.4171	
23.34.20	5027.78	269.4	0.1556	-0.8081	4.03	0.6053	0.4162	
23.34.22	5027.75	269.4	0.1561	-0.8066	4.00	0.6021	0.4152	
23.34.24	5027.74	269.4	0.1567	-0.8050	3.99	0.6010	0.4143	
23.34.26	5027.78	269.4	0.1572	-0.8035	4.03	0.6053	0.4133	
23.34.28	5028.07	269.4	0.1578	-0.8020	4.32	0.6355	0.4124	
23.34.30	5028.19	269.4	0.1583	-0.8004	4.45	0.6484	0.4114	
23.34.32	5028.23	269.4	0.1589	-0.7989	4.48	0.6513	0.4105	
23.34.34	5028.34	269.4	0.1594	-0.7974	4.59	0.6618	0.4096	
23.34.36	5028.30	269.4	0.1600	-0.7959	4.55	0.6580	0.4087	
23.34.38	5028.35	269.4	0.1606	-0.7944	4.60	0.6628	0.4077	
23.34.40	5028.41	269.4	0.1611	-0.7929	4.66	0.6684	0.4068	
23.34.42	5028.46	269.4	0.1617	-0.7914	4.71	0.6730	0.4059	
23.34.44	5028.50	269.4	0.1622	-0.7899	4.75	0.6767	0.4050	
23.34.46	5028.64	269.4	0.1628	-0.7884	4.89	0.6893	0.4041	
23.34.48	5028.67	269.4	0.1633	-0.7869	4.92	0.6920	0.4032	
23.34.50	5028.65	269.4	0.1639	-0.7855	4.90	0.6902	0.4023	
23.34.52	5028.69	269.4	0.1644	-0.7840	4.94	0.6937	0.4014	
23.34.54	5028.84	269.4	0.1650	-0.7825	5.09	0.7067	0.4006	
23.34.56	5028.98	269.4	0.1656	-0.7811	5.23	0.7185	0.3997	
23.34.58	5028.99	269.4	0.1661	-0.7796	5.24	0.7193	0.3988	
23.35.0	5028.79	269.4	0.1667	-0.7782	5.04	0.7024	0.3979	
23.35.10	5029.33	269.4	0.1694	-0.7710	5.58	0.7466	0.3936	
23.35.20	5029.69	269.4	0.1722	-0.7639	5.94	0.7738	0.3895	
23.35.30	5030.40	269.4	0.1750	-0.7570	6.65	0.8228	0.3854	

FLOPETROL
PRESSURE & TEMPERATURE CALCULATIONS

SECTION 2
PAGE 17

REMARKS

LOG DEL.P LOG T-DEL.T
DEL.T

DEL.P
PSIA

LOG-DEL.T

DEL.T
(HOURS)

TEMP.
DEG.F

PRESS.
PSIA

TIME
HR.MN.SS

23.35.40	5030.63	269.4	0.1778	-0.7501	7.08	0.8500	0.3813
23.35.50	5031.28	269.4	0.1806	-0.7434	7.53	0.8768	0.3774
23.36.0	5031.91	269.4	0.1833	-0.7366	8.16	0.9117	0.3736
23.36.10	5032.44	269.6	0.1861	-0.7302	8.69	0.9390	0.3698
23.36.20	5033.14	269.6	0.1889	-0.7238	9.39	0.9727	0.3661
23.36.30	5033.64	265.6	0.1917	-0.7175	9.89	0.9952	0.3625
23.36.40	5034.20	269.6	0.1944	-0.7112	10.45	1.0191	0.3590
23.36.50	5034.87	269.6	0.1972	-0.7050	11.12	1.0461	0.3556
23.37.0	5035.53	269.6	0.2000	-0.6990	11.78	1.0711	0.3522
23.37.10	5036.34	269.6	0.2028	-0.6930	12.59	1.1000	0.3489
23.37.20	5037.02	269.6	0.2056	-0.6871	13.27	1.1229	0.3456
23.37.30	5037.83	269.6	0.2083	-0.6812	14.08	1.1486	0.3424
23.37.40	5038.71	269.6	0.2111	-0.6755	14.96	1.1749	0.3393
23.37.50	5039.47	269.6	0.2139	-0.6698	15.72	1.1965	0.3362
23.38.0	5040.43	269.6	0.2167	-0.6642	16.68	1.2222	0.3332
23.38.10	5041.66	269.6	0.2194	-0.6587	17.91	1.2531	0.3303
23.38.20	5042.56	269.6	0.2222	-0.6532	18.81	1.2744	0.3274
23.38.30	5043.72	269.6	0.2250	-0.6478	19.97	1.3004	0.3245
23.38.40	5044.80	269.6	0.2278	-0.6425	21.05	1.3233	0.3217
23.38.50	5045.86	269.6	0.2306	-0.6372	22.11	1.3446	0.3190
23.39.0	5047.14	269.6	0.2333	-0.6320	23.39	1.3690	0.3163
23.39.10	5048.57	269.6	0.2361	-0.6269	24.82	1.3948	0.3136
23.39.20	5050.06	269.6	0.2389	-0.6218	26.31	1.4201	0.3110
23.39.30	5051.62	269.6	0.2417	-0.6168	27.87	1.4451	0.3085
23.39.40	5052.99	269.6	0.2444	-0.6118	29.24	1.4660	0.3059
23.39.50	5054.85	269.6	0.2472	-0.6069	31.10	1.4928	0.3035
23.40.0	5056.85	269.6	0.2500	-0.6021	33.10	1.5198	0.3010
23.40.30	5062.79	269.6	0.2583	-0.5878	39.04	1.5915	0.2940
23.41.0	5069.95	269.6	0.2667	-0.5740	46.20	1.6646	0.2872
23.41.30	5078.00	269.8	0.2750	-0.5607	54.25	1.7344	0.2808
23.42.0	5087.18	269.8	0.2833	-0.5477	63.43	1.8023	0.2747
23.42.30	5097.59	269.8	0.2917	-0.5351	73.84	1.8683	0.2688
23.43.0	5109.10	269.8	0.3000	-0.5229	85.35	1.9312	0.2632
23.43.30	5121.52	269.8	0.3083	-0.5110	97.77	1.9902	0.2579
23.44.0	5134.45	269.8	0.3167	-0.4994	110.70	2.0441	0.2527
23.44.30	5147.45	269.8	0.3250	-0.4881	123.70	2.0924	0.2478
23.45.0	5161.87	269.8	0.3333	-0.4771	138.12	2.1403	0.2430
23.45.30	5175.62	269.8	0.3417	-0.4664	151.87	2.1815	0.2385
23.46.0	5189.61	269.8	0.3500	-0.4559	165.86	2.2197	0.2341
23.46.30	5204.39	269.8	0.3583	-0.4457	180.64	2.2568	0.2299
23.47.0	5218.65	269.8	0.3667	-0.4357	194.90	2.2898	0.2258
23.47.30	5232.95	269.8	0.3750	-0.4260	209.20	2.3206	0.2218

15

16

17



FLOPETROL
PRESSURE & TEMPERATURE CALCULATIONS

SECTION 2
PAGE 18

TIME HR. MN. SS	PFESS. PSIA	TEMP. DEG. F	DEL. T (HOURS)	LOG DEL. T	DEL. P PSIA	LOG DEL. P	LOG T-DEL. T DEL. T	REMARKS
23.48.0	5247.20	269.8	0.3833	-0.4164	223.45	2.3492	0.2181	
23.48.30	5261.41	269.8	0.3917	-0.4071	237.66	2.3760	0.2144	
23.49.0	5275.71	269.8	0.4000	-0.3979	251.96	2.4013	0.2109	
23.49.30	5290.13	269.8	0.4083	-0.3890	266.38	2.4255	0.2074	
23.50.0	5303.87	269.8	0.4167	-0.3802	280.12	2.4473	0.2041	
23.50.30	5318.09	269.8	0.4250	-0.3716	294.34	2.4688	0.2009	
23.51.0	5332.31	269.8	0.4333	-0.3632	308.56	2.4893	0.1978	
23.51.30	5345.98	270.0	0.4417	-0.3549	322.23	2.5082	0.1948	
23.52.0	5359.80	270.0	0.4500	-0.3468	336.05	2.5264	0.1919	
23.52.30	5373.17	270.0	0.4583	-0.3388	349.42	2.5433	0.1891	
23.53.0	5387.14	270.0	0.4667	-0.3310	363.39	2.5604	0.1863	
23.53.30	5400.17	270.0	0.4750	-0.3233	376.42	2.5757	0.1836	
23.54.0	5413.27	270.0	0.4833	-0.3158	389.52	2.5905	0.1811	
23.54.30	5426.41	270.0	0.4917	-0.3083	402.66	2.6049	0.1785	
23.55.0	5439.77	270.0	0.5000	-0.3010	416.02	2.6191	0.1761	
23.55.30	5452.26	270.0	0.5083	-0.2939	428.51	2.6320	0.1737	
23.56.0	5465.39	270.0	0.5167	-0.2868	441.64	2.6451	0.1714	
23.56.30	5478.10	270.1	0.5250	-0.2798	454.35	2.6574	0.1691	
23.57.0	5490.14	270.1	0.5333	-0.2730	466.39	2.6687	0.1669	
23.57.30	5502.65	270.1	0.5417	-0.2663	479.10	2.6804	0.1648	
23.58.0	5515.12	270.1	0.5500	-0.2596	491.37	2.6914	0.1627	
23.58.30	5527.77	270.1	0.5583	-0.2531	504.02	2.7024	0.1607	
23.59.0	5539.60	270.1	0.5667	-0.2467	515.85	2.7125	0.1587	
23.59.30	5551.21	270.1	0.5750	-0.2403	527.46	2.7222	0.1568	
24.0.0	5565.18	270.1	0.5833	-0.2341	541.43	2.7335	0.1549	
24.0.30	5565.18	270.1	0.5833	-0.2341	541.43	2.7335	0.1549	
0.0.30	5575.06	270.1	0.5917	-0.2279	551.31	2.7414	0.1531	
0.1.0	5586.57	270.1	0.6000	-0.2218	562.82	2.7504	0.1513	
0.1.30	5598.31	270.3	0.6083	-0.2159	574.56	2.7593	0.1495	
0.2.0	5609.38	270.3	0.6167	-0.2099	585.63	2.7676	0.1478	
0.2.30	5620.84	270.3	0.6250	-0.2041	597.09	2.7760	0.1461	
0.3.0	5631.79	270.3	0.6333	-0.1984	608.04	2.7839	0.1445	
0.3.30	5642.95	270.3	0.6417	-0.1927	619.20	2.7918	0.1429	
0.4.0	5653.65	270.3	0.6500	-0.1871	629.90	2.7993	0.1413	
0.4.30	5664.55	270.3	0.6583	-0.1816	640.80	2.8067	0.1398	
0.5.0	5675.20	270.3	0.6667	-0.1761	651.45	2.8139	0.1383	
0.5.30	5685.28	270.3	0.6750	-0.1707	661.53	2.8205	0.1368	
0.6.0	5696.01	270.3	0.6833	-0.1654	672.26	2.8275	0.1354	
0.6.30	5706.39	270.3	0.6917	-0.1601	682.64	2.8342	0.1340	
0.7.0	5716.82	270.3	0.7000	-0.1549	693.07	2.8408	0.1326	
0.7.30	5726.77	270.3	0.7083	-0.1498	703.03	2.8470	0.1313	
0.8.0	5736.61	270.3	0.7167	-0.1447	712.86	2.8530	0.1300	

7th Sept. 1982



FLOPETROL
PRESSURE & TEMPERATURE CALCULATIONS

SECTION 2
PAGE 19

TIME HR. MN. SS	PRESS. PSIA	TEMP. DEG. F.	DEL. T. (HOURS)	LOG DEL. T.	DEL. P. PSIA	LOG DEL. P.	LOG T DEL. T. DEL. T.	REMARKS
0. 8. 30	5746.79	270.3	0.7250	-0.1397	723.04	2.8592	0.1287	
0. 9. 0	5756.40	270.3	0.7333	-0.1347	732.65	2.8649	0.1274	
0. 9. 30	5766.45	270.3	0.7417	-0.1298	742.70	2.8708	0.1262	
0.10. 0	5775.82	270.3	0.7500	-0.1249	752.07	2.8763	0.1249	
0.10. 30	5785.55	270.3	0.7583	-0.1201	761.80	2.8818	0.1237	
0.11. 0	5795.11	270.3	0.7667	-0.1154	771.36	2.8873	0.1226	
0.11. 30	5804.50	270.5	0.7750	-0.1107	780.75	2.8925	0.1214	
0.12. 0	5813.60	270.5	0.7833	-0.1061	789.85	2.8975	0.1203	
0.12. 30	5822.83	270.5	0.7917	-0.1015	799.08	2.9026	0.1192	
0.13. 0	5831.86	270.5	0.8000	-0.0969	808.11	2.9075	0.1181	
0.13. 30	5840.45	270.5	0.8083	-0.0924	816.70	2.9121	0.1170	
0.14. 0	5849.69	270.5	0.8167	-0.0880	825.94	2.9169	0.1160	
0.14. 30	5858.55	270.5	0.8250	-0.0835	834.80	2.9216	0.1150	
0.15. 0	5867.29	270.5	0.8333	-0.0792	843.54	2.9261	0.1139	
0.15. 30	5876.56	270.5	0.8417	-0.0749	852.81	2.9309	0.1129	
0.16. 0	5884.61	270.5	0.8500	-0.0706	860.86	2.9349	0.1120	
0.16. 30	5893.07	270.5	0.8583	-0.0663	869.32	2.9392	0.1110	
0.17. 0	5901.66	270.5	0.8667	-0.0621	877.91	2.9434	0.1101	
0.17. 30	5910.16	270.5	0.8750	-0.0580	886.42	2.9476	0.1091	
0.18. 0	5918.26	270.5	0.8833	-0.0539	894.51	2.9516	0.1082	
0.18. 30	5926.28	270.5	0.8917	-0.0498	902.53	2.9555	0.1073	
0.19. 0	5934.85	270.5	0.9000	-0.0458	911.10	2.9596	0.1065	
0.19. 30	5942.76	270.5	0.9083	-0.0418	919.01	2.9633	0.1056	
0.20. 0	5950.43	270.5	0.9167	-0.0378	926.68	2.9669	0.1047	
0.20. 30	5958.69	270.5	0.9250	-0.0339	934.94	2.9708	0.1039	
0.21. 0	5966.54	270.5	0.9333	-0.0300	942.79	2.9744	0.1031	
0.21. 30	5974.07	270.5	0.9417	-0.0261	950.32	2.9779	0.1023	
0.22. 0	5981.66	270.7	0.9500	-0.0223	957.91	2.9813	0.1015	
0.22. 30	5989.23	270.7	0.9583	-0.0185	965.48	2.9847	0.1007	
0.23. 0	5997.15	270.7	0.9667	-0.0147	973.40	2.9883	0.0999	
0.23. 30	6004.52	270.7	0.9750	-0.0110	980.78	2.9916	0.0991	
0.24. 0	6011.41	270.7	0.9833	-0.0073	987.66	2.9946	0.0984	
0.24. 30	6018.75	270.7	0.9917	-0.0036	995.00	2.9978	0.0976	
0.25. 0	6025.93	270.7	1.0000	-0.0000	1002.18	3.0009	0.0969	
0.26. 0	6040.40	270.7	1.0167	0.0072	1016.65	3.0072	0.0955	
0.27. 0	6054.77	270.7	1.0333	0.0142	1031.02	3.0133	0.0941	
0.28. 0	6068.60	270.7	1.0500	0.0212	1044.85	3.0191	0.0928	
0.29. 0	6081.92	270.7	1.0667	0.0280	1058.17	3.0246	0.0914	
0.30. 0	6095.25	270.7	1.0833	0.0348	1071.50	3.0300	0.0902	
0.31. 0	6107.80	270.7	1.1000	0.0414	1084.05	3.0350	0.0889	
0.32. 0	6120.83	270.9	1.1167	0.0479	1097.08	3.0402	0.0877	
0.33. 0	6133.60	270.9	1.1333	0.0544	1109.85	3.0453	0.0866	



FLOPETROL
PRESSURE & TEMPERATURE CALCULATIONS

SECTION 2
PAGE 20

REMARKS

22

LOG DEL.P LOG T-DEL.T
DEL.T

LOG DEL.P LOG T-DEL.T
DEL.T

DEL.P
PSIA

LOG DEL.T

DEL.T
(HOURS)

TEMP.
DEG.F

PRESS.
PSIA

TIME
HR:MIN:SS

0.34.0	6145.72	270.9	1.1500	0.0607	1121.97	3.0500	0.0854
0.35.0	6157.76	270.9	1.1667	0.0669	1134.01	3.0546	0.0843
0.36.0	6169.78	270.9	1.1833	0.0731	1146.03	3.0592	0.0832
0.37.0	6181.47	270.9	1.2000	0.0792	1157.72	3.0636	0.0822
0.38.0	6193.07	270.9	1.2167	0.0852	1169.32	3.0679	0.0812
0.39.0	6204.24	270.9	1.2333	0.0911	1180.49	3.0721	0.0802
0.40.0	6215.47	270.9	1.2500	0.0969	1191.72	3.0762	0.0792
0.41.0	6226.30	270.9	1.2667	0.1027	1202.55	3.0801	0.0782
0.42.0	6236.84	270.9	1.2833	0.1083	1213.09	3.0839	0.0773
0.43.0	6247.42	270.9	1.3000	0.1139	1223.67	3.0877	0.0764
0.44.0	6257.67	270.9	1.3167	0.1195	1233.92	3.0913	0.0755
0.45.0	6267.94	270.9	1.3333	0.1249	1244.19	3.0949	0.0746
0.46.0	6277.98	270.9	1.3500	0.1303	1254.23	3.0984	0.0738
0.47.0	6287.80	271.0	1.3667	0.1357	1264.05	3.1018	0.0730
0.48.0	6297.17	271.0	1.3833	0.1409	1273.42	3.1050	0.0721
0.49.0	6306.71	271.0	1.4000	0.1461	1282.96	3.1082	0.0714
0.50.0	6316.27	271.0	1.4167	0.1513	1292.52	3.1114	0.0706
0.51.0	6325.48	271.0	1.4333	0.1563	1301.73	3.1145	0.0698
0.52.0	6334.62	271.0	1.4500	0.1614	1310.87	3.1176	0.0691
0.53.0	6343.30	271.0	1.4667	0.1663	1319.55	3.1204	0.0684
0.54.0	6352.07	271.0	1.4833	0.1712	1328.32	3.1233	0.0676
0.55.0	6361.07	271.0	1.5000	0.1761	1337.32	3.1262	0.0669
0.56.0	6369.73	271.0	1.5167	0.1809	1345.98	3.1290	0.0663
0.57.0	6377.72	271.0	1.5333	0.1856	1353.97	3.1316	0.0656
0.58.0	6385.61	271.0	1.5500	0.1903	1361.86	3.1341	0.0649
0.59.0	6393.54	271.0	1.5667	0.1950	1369.79	3.1367	0.0643
1.0.0	6401.81	271.0	1.5833	0.1996	1378.06	3.1393	0.0637
1.1.0	6409.81	271.0	1.6000	0.2041	1386.06	3.1418	0.0631
1.2.0	6417.13	271.0	1.6167	0.2086	1393.38	3.1441	0.0624
1.3.0	6424.56	271.0	1.6333	0.2131	1400.81	3.1464	0.0619
1.4.0	6432.75	271.0	1.6500	0.2175	1409.00	3.1489	0.0613
1.5.0	6439.61	271.0	1.6667	0.2218	1415.86	3.1510	0.0607
1.6.0	6447.20	271.0	1.6833	0.2262	1423.45	3.1533	0.0601
1.7.0	6453.87	271.0	1.7000	0.2304	1430.12	3.1554	0.0596
1.8.0	6460.80	271.0	1.7167	0.2347	1437.05	3.1575	0.0590
1.9.0	6467.52	271.0	1.7333	0.2389	1443.77	3.1595	0.0585
1.10.0	6474.37	271.0	1.7500	0.2430	1450.62	3.1616	0.0580
1.11.0	6481.16	271.0	1.7667	0.2472	1457.41	3.1636	0.0575
1.12.0	6487.47	271.0	1.7833	0.2512	1463.72	3.1655	0.0570
1.13.0	6493.84	271.0	1.8000	0.2553	1470.09	3.1673	0.0565
1.14.0	6499.97	271.0	1.8167	0.2593	1476.22	3.1692	0.0560
1.15.0	6506.35	271.0	1.8333	0.2632	1482.60	3.1710	0.0555

23



FLOPETROL
PRESSURE & TEMPERATURE CALCULATIONS

SECTION 2
PAGE 21

TIME HR. MIN. SEC.	PRESS. PSIA	TEMP. DEG. F.	DEL. T. (HOURS)	LOG DEL. T.	DEL. P. PSIA	LOG DEL. P.	LOG T-DEL. T. DEL. T.	REMARKS
1.16. 0	6511.78	271.0	1.8500	0.2672	1488.03	3.1726	0.0550	
1.17. 0	6517.90	271.2	1.8667	0.2711	1494.15	3.1744	0.0546	
1.18. 0	6523.99	271.2	1.8833	0.2749	1500.24	3.1762	0.0541	
1.19. 0	6529.93	271.2	1.9000	0.2788	1506.18	3.1779	0.0537	
1.20. 0	6535.66	271.2	1.9167	0.2825	1511.91	3.1795	0.0532	
1.21. 0	6541.58	271.2	1.9333	0.2863	1517.83	3.1812	0.0528	
1.22. 0	6546.73	271.2	1.9500	0.2900	1522.58	3.1827	0.0524	
1.23. 0	6552.22	271.2	1.9667	0.2937	1528.47	3.1843	0.0520	
1.24. 0	6558.42	271.2	1.9833	0.2974	1534.67	3.1860	0.0516	
1.25. 0	6562.95	271.2	2.0000	0.3010	1539.20	3.1873	0.0512	
1.26. 0	6568.54	271.2	2.0167	0.3046	1544.79	3.1889	0.0508	
1.27. 0	6573.35	271.2	2.0333	0.3082	1549.60	3.1902	0.0504	
1.28. 0	6578.08	271.2	2.0500	0.3118	1554.33	3.1915	0.0500	
1.29. 0	6583.49	271.2	2.0667	0.3153	1559.74	3.1931	0.0496	
1.30. 0	6588.49	271.2	2.0833	0.3188	1564.74	3.1944	0.0492	
1.31. 0	6593.33	271.2	2.1000	0.3222	1569.58	3.1958	0.0488	
1.32. 0	6598.27	271.2	2.1167	0.3257	1574.52	3.1971	0.0485	
1.33. 0	6602.74	271.2	2.1333	0.3291	1578.99	3.1984	0.0481	
1.34. 0	6607.72	271.2	2.1500	0.3324	1583.97	3.1997	0.0478	
1.35. 0	6612.31	271.2	2.1667	0.3358	1588.56	3.2010	0.0474	
1.36. 0	6616.44	271.2	2.1833	0.3391	1592.69	3.2021	0.0471	
1.37. 0	6621.12	271.2	2.2000	0.3424	1597.37	3.2034	0.0467	
1.38. 0	6625.10	271.2	2.2167	0.3457	1601.35	3.2045	0.0464	
1.39. 0	6629.93	271.2	2.2333	0.3490	1606.18	3.2058	0.0461	
1.40. 0	6634.17	271.2	2.2500	0.3522	1610.42	3.2069	0.0458	
1.41. 0	6638.43	271.2	2.2667	0.3554	1614.68	3.2081	0.0454	
1.42. 0	6642.39	271.2	2.2833	0.3586	1618.64	3.2092	0.0451	
1.43. 0	6646.55	271.2	2.3000	0.3617	1622.80	3.2103	0.0448	
1.44. 0	6650.51	271.2	2.3167	0.3649	1626.76	3.2113	0.0445	
1.45. 0	6654.59	271.2	2.3333	0.3680	1630.84	3.2124	0.0442	
1.46. 0	6658.58	271.2	2.3500	0.3711	1634.83	3.2135	0.0439	
1.47. 0	6662.57	271.2	2.3667	0.3741	1638.82	3.2145	0.0436	
1.48. 0	6666.15	271.2	2.3833	0.3772	1642.40	3.2155	0.0433	
1.49. 0	6670.15	271.2	2.4000	0.3802	1646.40	3.2165	0.0430	
1.50. 0	6673.98	271.2	2.4167	0.3832	1650.23	3.2175	0.0428	
1.51. 0	6677.09	271.2	2.4333	0.3862	1653.34	3.2184	0.0425	
1.52. 0	6681.54	271.2	2.4500	0.3892	1657.79	3.2195	0.0422	
1.53. 0	6684.73	271.2	2.4667	0.3921	1660.98	3.2204	0.0419	
1.54. 0	6687.96	271.2	2.4833	0.3950	1664.21	3.2212	0.0417	
1.55. 0	6691.81	271.2	2.5000	0.3979	1668.06	3.2222	0.0414	
1.56. 0	6695.03	271.2	2.5167	0.4008	1671.28	3.2230	0.0411	
1.57. 0	6698.67	271.2	2.5333	0.4037	1674.92	3.2240	0.0409	



FLOPETROL
PRESSURE & TEMPERATURE CALCULATIONS

SECTION 2
PAGE 22

TIME HR.MN.SS	PRESS. PSIA	TEMP. DEG.F.	DEL.T (HOURS)	LOG DEL.T	DEL.P PSIA	LOG DEL.P	LOG T*DEL.T DEL.T	REMARKS
2. 0. 0	6708.27	271.2	2.5833	0.4122	1684.52	3.2265	0.0401	
2. 5. 0	6723.97	271.2	2.6667	0.4260	1700.22	3.2305	0.0389	
2.10. 0	6738.76	271.2	2.7500	0.4393	1715.01	3.2343	0.0378	26
2.15. 0	6752.76	271.2	2.8333	0.4523	1729.01	3.2378	0.0367	
2.20. 0	6765.68	271.2	2.9167	0.4649	1741.93	3.2410	0.0357	
2.25. 0	6777.61	271.2	3.0000	0.4771	1753.86	3.2440	0.0348	
2.30. 0	6789.65	271.2	3.0833	0.4890	1765.90	3.2470	0.0339	
2.35. 0	6800.34	271.2	3.1667	0.5006	1776.59	3.2496	0.0330	27
2.40. 0	6810.37	271.2	3.2500	0.5119	1786.62	3.2520	0.0322	
2.45. 0	6820.29	271.2	3.3333	0.5229	1796.54	3.2544	0.0314	
2.50. 0	6828.72	271.2	3.4167	0.5336	1804.97	3.2565	0.0307	
2.55. 0	6837.43	271.2	3.5000	0.5441	1813.68	3.2586	0.0300	28
3. 0. 0	6845.20	271.2	3.5833	0.5543	1821.45	3.2604	0.0293	
3. 5. 0	6853.22	271.2	3.6667	0.5643	1829.47	3.2623	0.0286	
3.10. 0	6859.94	271.2	3.7500	0.5740	1836.19	3.2639	0.0280	
3.15. 0	6866.40	271.2	3.8333	0.5836	1842.65	3.2654	0.0274	29
3.20. 0	6872.81	271.4	3.9167	0.5929	1849.06	3.2670	0.0269	
3.25. 0	6878.83	271.4	4.0000	0.6021	1855.08	3.2684	0.0263	

END OF BUILD UP
START P.O.O.H.



FLOPETROL
PRESSURE & TEMPERATURE CALCULATIONS

SECTION 2
PAGE 23

TIME HR. MIN. SS	PRESS. PSIA	TEMP. DEG. F	DEL. T (HOURS)	LOG DEL. T	DEL. P PSIA	LOG DEL. P	REMARKS
3.34.0	6629.30						
3.34.30	6629.86						
3.35.0	6630.89						
3.35.30	6631.72						
3.36.0	6632.74						
3.36.30	6633.34						
3.37.0	6634.16						
3.37.30	6634.72						
3.38.0	6635.84						
3.38.30	6636.50						
3.39.0	6636.08						
3.39.30	6637.07	255.7					
3.40.0	6637.90						
3.40.30	6638.94						
3.41.0	6639.71						
3.41.30	6640.57						
3.42.0	6641.65						
3.42.30	6642.50						
3.43.0	6644.03						
3.43.30	6644.41						
3.44.0	6644.76	254.8					
3.51.0	6409.85	252.0					
3.51.30	6409.97						
3.52.0	6410.24						
3.52.30	6410.72						
3.53.0	6410.83	250.5					
3.53.30	6410.70						
3.54.0	6411.30						
3.54.30	6411.90						
3.55.0	6412.27	249.6					
3.55.30	6412.57						
3.56.0	6412.78						
3.56.30	6413.44						
3.57.0	6414.37	249.1					
3.57.30	6414.49						
3.58.0	6415.51						
3.58.30	6416.11	248.7					
3.59.0	6416.67						
3.59.30	6417.10						
4.0.0	6417.95						
4.7.0	6183.34	245.5					
4.7.30	6184.63						

1st gradient stop
at 11,769 Ft.

P.O.O.H.
2nd gradient stop
at 11,304 Ft.

P.O.O.H.
3rd gradient stop
at 10,804 Ft.

30



FLOPETROL
PRESSURE & TEMPERATURE CALCULATIONS

SECTION 2
PAGE 24

REMARKS

TIME HR.NR.SS	PRESS: PSIA	TEMP: DEG.F	DEL.T (HOURS)	LOG DEL.T	DEL.P PSIA	LOG DEL.P	REMARKS
4. 8. 0	6185.55						
4. 8. 30	6186.94						
4. 9. 0	6187.88	244.4					
4. 9. 30	6189.07						
4.10. 0	6190.90						
4.10.30	6191.79						
4.11. 0	6192.90	243.9					
4.11.30	6194.40						
4.12. 0	6195.70						
4.12.30	6197.17						
4.13. 0	6198.16	243.5					
4.13.30	6199.27						
4.14. 0	6200.37						
4.14.30	6202.37	243.1					
4.15. 0	6202.94						
4.15.30	6204.23						
4.16. 0	6205.54						
4.22. 0	5988.03	238.8					P.O.O.H. 4th gradient stop at 10,304 Ft.
4.22.30	5983.60						
4.23. 0	5984.20						
4.23.30	5985.31						
4.24. 0	5986.20						
4.24.30	5987.31	236.3					
4.25. 0	5988.06						
4.25.30	5989.41						
4.26. 0	5991.00						
4.26.30	5991.93	234.9					
4.27. 0	5992.54						
4.27.30	5994.19						
4.28. 0	5995.17						
4.28.30	5996.51	234.0					
4.29. 0	5997.46						
4.29.30	5998.72						
4.30. 0	6000.14	233.4					
4.30.30	6001.15						
4.31. 0	6001.92	245.5					CONTINUE P.O.O.H.

FLOPETROL

Client : PHILLIPS P. Co.

Section : 3

Base : STAVANGER

Field : TOMMELITEN

Page : 1

Well : 179 - 6

Report N°:

SEQUENCE OF EVENTS

DATE	TIME	OPERATION
6thSEP.82	18.15	Start rig up for wireline with bottom hole gauges.
	19.10	T.P.T. No. 81238 connected to toolstring.
	19.19	Battery pack connected on SSDR No. 82104 .
		SSDR set at 30 sec. sample rate.
	19.22	Gauge operation checked, O.K.
	19.26	SSDR connected to toolstring.
	19.46	Gauges in lubricator.
	20.04	Wireline head connected.
	20.12	Pressure test lubricator to 1,200 PSI
	20.30	Open lubricator valve.
	20.35	Open EZ - tree valve.
	20.40	Start R.I.H.
	22.45	Gauges on depth, TPT at 12,304.5 Ft. and SSDR at 12,321.5 Ft.
	23.10	Open well on 8/64" adj. choke. Increase slowly.
	23.12	Well flowing on 24/64" adj. choke.
	23.25	Well shut in at choke manifold.
7thSEP.82	03.25	Start P.O.O.H.
	03.34	1st gradient stop. TPT at 11,769 Ft. and SSDR at 11,786 Ft.
	03.45	Continue P.O.O.H.
	03.51	2nd gradient stop. TPT at 11,304 Ft. and SSDR at 11,321 Ft.
	04.00	Continue P.O.O.H.
	04.07	3rd gradient stop. TPT at 10,804 Ft. and SSDR at 10,821 Ft.
	04.16	Continue P.O.O.H.
	04.22	4th gradient stop. TPT at 10,304 Ft. and SSDR at 10,321 Ft.
	04.32	Continue P.O.O.H.
	05.51	Gauges to surface.
	06.30	Disconnect battery on SSDR.

N. DOP 107

* LISTING OF ALL DATA *
* * * * *
* CN TAPE *
* * * * *

TEMPERATURE IN DEG F
PRESSURE IN PSI A
TIME IN HH.MM.SS

FILE

FLUETRA
Schlumberger

4
 22.4959Temp 268.2
 22.5200 7631.02
 22.5431 7626.39
 22.5632 7623.36
 23.0054 7616.56
 23.0300 7613.25
 23.0530 7609.39
 23.0731 7606.53
 23.0824 7604.68
 23.0837 7604.40

22.5001 7634.35
 22.5231 7629.87
 22.5500 7625.50
 0.0020 7622.86
 23.0100 7616.80
 23.0331 7612.43
 23.0555Temp 270.3
 23.0800 7605.79
 23.0826 7604.62
 23.0839 7604.37

22.5032 7633.15
 22.5300 7628.97
 22.5503Temp 269.8
 22.5707Temp 270.0
 23.0131 7615.03
 23.0400 7611.63
 23.0600 7608.68
 23.0816 7605.12
 23.0829 7604.79
 23.0842 7604.61

22.5100 7632.55
 22.5330 7628.12
 22.5531 7625.56
 77.4290Temp 270.1
 23.0200 7615.06
 23.0431 7610.11
 23.0631 7607.58
 23.0819 7604.89
 23.0832 7604.72
 23.0844 7604.38

22.5131 7631.73
 22.5400 7627.74
 22.5601 7623.96
 23.0052Temp 270.1
 23.0230 7613.73
 23.0500 7610.11
 23.0700 7607.02
 23.0821 7605.07
 23.0834 7604.50
 23.0847 7604.06

FILE

5
 23.0851 7604.29
 23.0902 7604.07
 23.0915 7603.83
 23.0928 7603.45
 23.0941 7603.33
 23.0954 7602.47
 23.1005 7572.75
 23.1018 7421.11
 23.1031 7149.52
 23.1044 6663.32

23.0853 7604.21
 23.0905 7603.94
 23.0918 7603.50
 23.0931 7603.53
 23.0944 7602.93
 23.0956 7602.63
 23.1008 7540.18
 23.1021 7366.40
 23.1034 6976.64
 23.1047 6578.29

23.0856 7604.37
 23.0908 7603.89
 23.0920 7603.43
 23.0933 7603.22
 23.0946 7602.73
 23.0959 7602.46
 23.1011 7412.45
 23.1023 7355.94
 23.1036 6952.34
 23.1049 6538.70

23.0859 7603.88
 23.0910 7603.79
 23.0923 7603.88
 23.0936 7603.14
 23.0949 7602.92
 23.1000 7602.51
 23.1013 7503.32
 23.1026 7290.44
 23.1039 6802.68
 23.1052 6471.15

23.0900 7603.91
 23.0913 7603.62
 23.0926 7603.56
 23.0938 7603.14
 23.0951 7603.09
 23.1003 7602.20
 23.1016 7386.17
 23.1029 7151.47
 23.1041 6782.09
 23.1054 6395.79

FILE

6
 23.1058Temp 270.3
 23.1110 5746.00
 23.1123 5451.69
 23.1135 5169.96
 23.1148 5054.72
 23.1200 5037.37
 23.1213 5033.85
 23.1226 5030.33
 23.1238 5029.60
 23.1251 5028.18

23.1100 6135.39
 23.1112 5702.07
 23.1125 5351.37
 23.1138 5123.39
 23.1151 5046.64
 23.1202 5038.23
 23.1215 5032.13
 23.1228 5030.55
 23.1241 5029.16
 23.1254 5028.29

23.1102 6077.68
 23.1115 5587.49
 23.1128 5322.63
 23.1141 5085.45
 23.1153 5046.06
 23.1205 5036.31
 23.1218 5031.62
 23.1231 5030.48
 23.1244 5028.40
 23.1256 5028.55

23.1105 5927.84
 23.1117 5567.03
 23.1130 5273.03
 23.1143 5071.25
 23.1156 5042.27
 23.1208 5033.48
 23.1220 5032.12
 23.1233 5029.57
 23.1246 5029.21
 23.1259 5027.82

23.1107 5854.04
 23.1120 5463.43
 23.1133 5226.22
 23.1146 5062.48
 23.1159 5037.92
 23.1210 5034.55
 23.1223 5031.44
 23.1236 5029.54
 23.1249 5029.18
 23.1300 5027.92

FILE

7
 23.1305 5027.98
 23.1318 5027.15
 23.1331 5027.45
 23.1344 5027.11
 23.1357 5027.43
 23.1407 5027.42
 23.1420 5027.19
 23.1433 5027.12
 23.1446 5027.22
 23.1459 5027.49

23.1308 5027.62
 23.1321 5027.21
 23.1334 5026.97
 23.1347 5027.17
 23.1359 5027.30
 23.1410 5027.24
 23.1423 5027.18
 23.1435 5027.24
 23.1448 5027.32
 23.1500 5027.30

23.1311 5027.54
 23.1323 5027.54
 23.1336 5026.96
 23.1349 5027.38
 23.1400 5027.30
 23.1412 5027.26
 23.1425 5027.27
 23.1438 5027.19
 23.1451 5027.38
 23.1502 5027.30

23.1313 5027.64
 23.1326 5027.31
 23.1339 5027.31
 23.1352 5027.02
 23.1402 5027.07
 23.1415 5027.10
 23.1428 5027.37
 23.1441 5027.11
 23.1453 5027.32
 23.1505 5027.24

23.1316 5027.49
 23.1329 5027.22
 23.1341 5027.18
 23.1354 5026.92
 23.1405 5027.28
 23.1417 5027.44
 23.1430 5027.31
 23.1443 5027.22
 23.1456 5027.32
 23.1508 5027.20

FILE

8
 23.1511 5027.42
 23.1524 5027.31
 23.1537 5027.31
 23.1603Temp 269.4
 23.1715 5026.61
 23.1831 5025.98
 23.1947 5025.64
 23.2100 5025.10
 23.2200 5024.76
 23.2315 5024.23

23.1514 5027.25
 23.1527 5027.34
 23.1540 5027.36
 23.1616 5026.82
 23.1730 5026.33
 23.1846 5025.87
 23.2000 5025.50
 23.2106Temp 269.2
 23.2216 5024.80
 23.2330 5024.10

23.1517 5027.30
 23.1529 5027.26
 23.1542 5027.24
 23.1631 5026.89
 23.1746 5026.34
 23.1900 5025.96
 23.2015 5025.52
 23.2115 5025.38
 23.2231 5024.63
 23.2346 5024.02

23.1519 5027.24
 23.1532 5027.27
 23.1558 5027.34
 23.1647 5026.55
 23.1800 5026.07
 23.1916 5025.79
 23.2030 5025.41
 23.2131 5025.25
 23.2247 5024.47
 23.2400 5023.84

23.1522 5027.40
 23.1535 5027.11
 23.1600 5027.35
 23.1700 5026.35
 23.1815 5026.16
 23.1931 5025.76
 23.2046 5025.34
 23.2146 5025.03
 23.2300 5024.33
 23.2418 5023.93

FILE 9

FLORENZ, 23.2424
 SCHLUMBERGER, 23.2437
 23.2450
 23.2503
 23.2516
 23.2529
 23.2541
 23.2554
 23.2605
 23.2615

5023.93
 5023.76
 5023.70
 5023.48
 5023.75
 5023.46
 5023.33
 5023.70
 5023.35
 5023.33
 23.2427
 23.2440
 23.2453
 23.2505
 23.2518
 23.2531
 23.2544
 23.2557
 23.2607
 23.2617
 5023.86
 5023.89
 5023.70
 5023.61
 5023.73
 5023.41
 5023.65
 5023.33
 5023.51
 5023.54
 23.2429
 23.2442
 23.2455
 23.2508
 23.2521
 23.2534
 23.2547
 23.2559
 23.2609Temp
 23.2620
 5023.81
 5023.86
 5023.62
 5023.69
 5023.51
 5023.60
 5023.36
 5023.44
 269.4
 5023.40
 23.2432
 23.2445
 23.2458
 23.2511
 23.2523
 23.2536
 23.2549
 23.2600
 23.2610
 23.2623
 5023.64
 5023.78
 5023.70
 5023.69
 5023.57
 5023.65
 5023.40
 5023.33
 5023.36
 5023.28
 23.2435
 23.2447
 23.2500
 23.2513
 23.2526
 23.2539
 23.2552
 23.2602
 23.2612
 23.2625
 5023.88
 5023.77
 5023.75
 5023.60
 5023.78
 5023.59
 5023.37
 5023.66
 5023.60
 5023.29

FILE 10

23.2628
 23.2641
 23.2653
 23.2705
 23.2718
 23.2731
 23.2744
 23.2756
 23.2808
 23.2821

5023.79
 5023.30
 5023.78
 5023.60
 5023.72
 5023.71
 5023.42
 5023.55
 5023.53
 5023.38
 5023.67
 5023.41
 5023.63
 5023.22
 5023.63
 5023.24
 5023.27
 5023.55
 5023.47
 5023.58
 23.2630
 23.2643
 23.2656
 23.2708
 23.2720
 23.2733
 23.2746
 23.2759
 23.2811
 23.2823
 5023.38
 5023.44
 5023.32
 5023.42
 5023.53
 5023.31
 5023.45
 5023.54
 5023.55
 5023.55
 5023.59
 23.2635
 23.2648
 23.2700
 23.2713
 23.2726
 23.2738
 23.2751
 23.2803
 23.2816
 23.2829
 5023.56
 5023.56
 5023.29
 5023.52
 5023.19
 5023.32
 5023.59
 5023.60
 5023.51
 5023.42
 23.2638
 23.2651
 23.2702
 5023.47
 5023.52
 5023.52
 5023.74
 5023.98
 5023.70
 5024.12
 5024.36
 5024.34

FILE 11

23.2835
 23.2848
 23.2900
 23.2912
 23.2925
 23.2938
 23.2951
 23.3002
 23.3015
 23.3028

5023.62
 5023.74
 5023.62
 5023.52
 5023.68
 5023.87
 5023.57
 5024.03
 5024.19
 5024.16
 5023.71
 5023.62
 5023.47
 5023.56
 5023.76
 5023.82
 5024.13
 5024.07
 5023.99
 5023.99
 23.2838
 23.2850
 23.2902
 23.2915
 23.2928
 23.2941
 23.2953
 23.3005
 23.3018
 23.3031
 5023.41
 5023.34
 5023.65
 5023.73
 5023.84
 5023.77
 5024.00
 5023.88
 5023.85
 5024.04
 23.2843
 23.2856
 23.2907
 23.2920
 23.2933
 23.2946
 23.2959
 23.3010
 23.3023
 23.3036
 5023.43
 5023.38
 5023.73
 5023.82
 5023.69
 5023.98
 5023.77
 5024.02
 5024.02
 5024.42
 23.2845
 23.2858
 23.2910
 23.2923
 23.2935
 23.2948
 23.3000
 23.3013
 23.3026
 23.3038
 5023.29
 5023.72
 5023.73
 5023.64
 5023.74
 5023.98
 5023.70
 5024.12
 5024.36
 5024.34

FILE 12

23.3042
 23.3055
 23.3108
 23.3121
 23.3134
 23.3147
 23.3159
 23.3210
 23.3223
 23.3235

5024.06
 5024.25
 5024.61
 5024.55
 5024.73
 5024.52
 5025.02
 5024.97
 5025.24
 5025.56
 5024.20
 5024.36
 269.4
 5024.46
 5024.53
 5024.71
 5025.09
 5024.96
 5025.26
 5025.41
 23.3045
 23.3058
 23.3111Temp
 23.3123
 23.3136
 23.3149
 23.3200
 23.3212
 23.3225
 23.3238
 5024.36
 5024.45
 5024.39
 5024.60
 5024.36
 5025.04
 5024.97
 5025.17
 5025.32
 5025.33
 23.3047
 23.3100
 23.3113
 23.3126
 23.3139
 23.3152
 23.3202
 23.3215
 23.3228
 23.3241
 23.3050
 23.3103
 23.3116
 23.3129
 23.3141
 23.3154
 23.3205
 23.3217
 23.3230
 23.3243
 5024.31
 5024.25
 5024.60
 5024.60
 5025.16
 5024.95
 5024.97
 5025.15
 5025.26
 5025.43
 23.3053
 23.3105
 23.3118
 23.3131
 23.3144
 23.3157
 23.3207
 5024.84
 5025.01
 5025.10
 5025.66
 5024.28
 5024.44
 5024.67
 5024.63
 5024.91
 5024.86
 5024.84
 5025.01
 5025.10
 5025.66

FILE 13

23.3249
 23.3300
 23.3313
 23.3326
 23.3338
 23.3351
 23.3403
 23.3416
 23.3429
 23.3441

5025.87
 5026.07
 5025.93
 5026.26
 5026.82
 5026.94
 5027.25
 5027.21
 5028.22
 5028.44
 5025.73
 5025.81
 5026.08
 5026.69
 5027.00
 5027.19
 5027.77
 5028.17
 5028.50
 23.3251
 23.3302
 23.3315
 23.3328
 23.3341
 23.3354
 23.3405
 23.3418
 23.3431
 23.3444
 5025.65
 5025.92
 5026.39
 5026.68
 5026.82
 5026.86
 5027.20
 5027.78
 5028.34
 5028.71
 23.3256
 23.3308
 23.3320
 23.3333
 23.3346
 23.3359
 23.3411
 23.3423
 23.3436
 23.3449
 5025.79
 5026.30
 5026.30
 5026.56
 5026.81
 5026.92
 5027.39
 5027.61
 5027.78
 5028.37
 5028.69
 23.3259
 23.3310
 23.3323
 23.3336
 23.3349
 23.3400
 23.3413
 23.3426
 23.3439
 23.3452
 5025.93
 5026.14
 5026.23
 5026.54
 5026.92
 5027.39
 5027.61
 5027.78
 5028.37
 5028.69

FILE 14

Novara 23 3456 5028.98
 Schlumberger 23 3507 5029.32
 23 3523 5029.93
 23 3533 5030.36
 23 3546 5031.05
 23 3559 5031.74
 23 3610 5032.44
 23 3622 5033.19
 23 3635 5033.70
 23 3647 5034.80

23 3458 5028.99
 23 3510 5029.33
 23 3523 5029.93
 23 3535 5030.56
 23 3548 5031.21
 23 3600 5031.91
 23 3613Temp 269.6
 23 3624 5033.06
 23 3637 5034.12
 23 3650 5034.87

23 3500 5028.79
 23 3512 5029.31
 23 3525 5030.17
 23 3538 5030.66
 23 3551 5031.32
 23 3602 5032.04
 23 3614 5032.61
 23 3627 5033.41
 23 3640 5034.20
 23 3653 5035.19

23 3502 5029.04
 23 3515 5029.63
 23 3528 5030.32
 23 3541 5030.91
 23 3553 5031.45
 23 3605 5031.93
 23 3617 5032.60
 23 3629 5033.65
 23 3642 5034.22
 23 3655 5035.42

23 3505 5029.25
 23 3517 5029.70
 23 3530 5030.40
 23 3543 5030.80
 23 3556 5031.61
 23 3608 5032.15
 23 3619 5033.11
 23 3632 5033.62
 23 3645 5034.57
 23 3658 5035.34

FILE 15

23 3701 5035.63
 23 3713 5036.61
 23 3726 5037.74
 23 3739 5038.62
 23 3752 5039.87
 23 3802 5040.75
 23 3815 5041.63
 23 3828 5043.41
 23 3841 5044.95
 23 3853 5046.50

23 3703 5036.01
 23 3716 5036.50
 23 3729 5037.64
 23 3741 5038.80
 23 3754 5039.95
 23 3807 5040.86
 23 3819 5041.99
 23 3830 5043.72
 23 3843 5045.06
 23 3856 5046.59

23 3705 5036.09
 23 3718 5036.72
 23 3731 5038.01
 23 3744 5039.02
 23 3757 5040.08
 23 3807 5041.26
 23 3820 5042.56
 23 3833 5043.79
 23 3846 5045.18
 23 3859 5047.17

23 3708 5035.92
 23 3721 5037.17
 23 3734 5038.24
 23 3747 5039.37
 23 3759 5040.38
 23 3810 5041.66
 23 3823 5042.57
 23 3835 5044.13
 23 3848 5045.53
 23 3900 5047.14

23 3711 5036.55
 23 3723 5037.22
 23 3736 5038.49
 23 3749 5039.27
 23 3800 5040.43
 23 3812 5041.55
 23 3825 5043.01
 23 3838 5044.51
 23 3851 5046.02
 23 3902 5047.48

FILE 16

23 3905 5047.97
 23 3918 5049.82
 23 3931 5051.78
 23 3944 5054.04
 23 3956 5055.81
 23 4008 5058.33
 23 4021 5060.95
 23 4034 5063.33
 23 4047 5066.58
 23 4059 5069.38

23 3908 5048.30
 23 3920 5050.06
 23 3933 5051.72
 23 3946 5054.33
 23 3959 5056.47
 23 4011 5058.83
 23 4023 5061.26
 23 4036 5063.98
 23 4049 5067.18
 23 4100 5069.95

23 3910 5048.57
 23 3923 5050.22
 23 3936 5052.60
 23 3949 5054.62
 23 4000 5056.85
 23 4013 5059.25
 23 4026 5061.92
 23 4039 5064.80
 23 4052 5067.95
 23 4102 5070.30

23 3913 5049.05
 23 3926 5050.89
 23 3938 5052.82
 23 3951 5055.07
 23 4003 5057.09
 23 4016 5059.79
 23 4029 5062.68
 23 4041 5065.27
 23 4054 5068.37
 23 4105 5071.00

23 3915 5049.21
 23 3928 5051.29
 23 3941 5053.08
 23 3954 5055.65
 23 4005 5057.75
 23 4018 5060.14
 23 4031 5062.90
 23 4044 5065.91
 23 4057 5069.01
 23 4107 5071.81

FILE 17

23 4111 5072.69
 23 4123 5076.18
 23 4135 5079.34
 23 4148 5083.51
 23 4224 5095.40
 23 4331 5121.96
 23 4446 5155.11
 23 4600 5189.61
 23 4700 5218.65
 23 4815 5254.70

23 4114 5073.37
 23 4125 5076.73
 23 4138 5080.89
 23 4151 5084.41
 23 4240 5101.23
 23 4347 5128.25
 23 4500 5161.87
 23 4616 5197.66
 23 4715 5225.96
 23 4831 5261.86

23 4116Temp 269.8
 23 4128 5077.18
 23 4141 5081.36
 23 4153 5085.04
 23 4255 5106.98
 23 4400 5134.45
 23 4515 5168.67
 23 4619Temp 269.8
 23 4730 5232.95
 23 4846 5269.38

23 4117 5074.51
 23 4130 5078.00
 23 4143 5081.79
 23 4156 5085.88
 23 4300 5109.10
 23 4415 5140.92
 23 4531 5176.08
 23 4631 5204.87
 23 4746 5240.57
 23 4900 5275.71

23 4120 5075.15
 23 4133 5078.88
 23 4146 5082.78
 23 4209 5090.10
 23 4316 5115.37
 23 4430 5147.45
 23 4546 5182.91
 23 4647 5212.31
 23 4800 5247.20
 23 4916 5283.55

FILE 18

23 4931 5290.60
 23 5046 5325.57
 23 5146 5353.33
 23 5300 5387.14
 23 5415 5419.82
 23 5531 5452.68
 23 5630 5478.10
 23 5746 5509.45
 23 5900 5539.60
 0.0016 5569.68

23 4947 5298.10
 23 5100 5332.31
 23 5200 5359.80
 23 5315 5393.26
 23 5431 5426.85
 23 5547 5459.63
 23 5646 5484.82
 23 5800 5515.12
 23 5915 5545.26
 0.0031 5575.44

23 5000 5303.87
 23 5115 5339.29
 23 5216 5367.13
 23 5330 5400.17
 23 5446 5433.59
 23 5600 5465.39
 23 5700 5490.14
 23 5816 5521.82
 23 5930 5551.21
 0.0046 5580.97

23 5015 5311.43
 23 5121Temp 270.0
 23 5231 5373.60
 23 5346 5407.20
 23 5500 5439.77
 23 5615 5471.42
 23 5715 5496.67
 23 5831 5528.19
 23 5946 5557.94
 0.0100 5586.57

23 5030 5318.09
 23 5131 5346.43
 23 5247 5381.03
 23 5400 5413.27
 23 5516 5446.32
 23 5623Temp 270.1
 23 5731 5503.26
 23 5847 5534.03
 0.0000 5565.18
 0.0115 5592.31

FILE 19

NO. 0.0125Temp 270.3	0.0130	5598.31	0.0146	5604.31	0.0200	5609.38	0.0215	5614.98
0.0231	0.0247	5627.31	0.0300	5631.79	0.0316	5637.80	0.0332	5643.68
0.0347	0.0400	5649.24	0.0415	5659.29	0.0430	5664.55	0.0446	5670.47
0.0500	0.0515	5680.98	0.0531	5685.57	0.0547	5691.82	0.0600	5696.01
0.0615	0.0627Temp 270.3	5701.00	0.0631	5706.75	0.0646	5711.95	0.0700	5716.82
0.0716	0.0731	5722.22	0.0746	5732.41	0.0800	5736.61	0.0815	5742.04
0.0830	0.0846	5746.79	0.0900	5756.40	0.0915	5761.59	0.0931	5766.77
0.0946	0.1000	5771.69	0.1015	5780.82	0.1030	5785.55	0.1046	5790.84
0.1100	0.1115	5795.11	0.1130Temp 270.5	5805.18	0.1132	5809.61	0.1147	5814.98
0.1200	0.1216	5818.74	0.1232	5823.41	0.1247	5828.02	0.1300	5831.86

FILE 20

0.1315	0.1330	5840.45	0.1346	5846.18	0.1400	5849.69	0.1415	5854.33
0.1431	0.1447	5864.13	0.1500	5867.29	0.1516	5872.42	0.1532	5877.15
0.1547	0.1600	5884.61	0.1615	5889.40	0.1630	5893.07	0.1631Temp 270.5	5914.79
0.1646	0.1700	5901.66	0.1715	5905.74	0.1731	5910.46	0.1747	5914.79
0.1800	0.1816	5922.66	0.1832	5926.80	0.1847	5931.14	0.1900	5934.85
0.1915	0.1930	5942.76	0.1946	5947.11	0.2000	5950.43	0.2015	5954.81
0.2031	0.2047	5962.96	0.2100	5966.54	0.2116	5970.88	0.2132	5974.53
0.2134Temp 270.7	0.2147	5978.38	0.2200	5981.66	0.2215	5985.44	0.2230	5989.23
0.2246	0.2300	5997.15	0.2315	6000.10	0.2331	6004.82	0.2347	6008.28
0.2400	0.2416	6015.45	0.2432	6019.22	0.2447	6023.06	0.2500	6025.93

FILE 21

0.2515	0.2530	6033.76	0.2546	6037.27	0.2600	6040.40	0.2615	6043.91
0.2631	0.2637Temp 270.7	6047.91	0.2647	6051.74	0.2700	6054.77	0.2716	6058.37
0.2732	0.2747	6065.27	0.2800	6068.60	0.2815	6071.48	0.2830	6075.43
0.2846	0.2900	6081.92	0.2915	6085.18	0.2931	6088.59	0.2947	6092.16
0.3000	0.3016	6098.40	0.3032	6101.98	0.3047	6105.31	0.3100	6107.80
0.3115	0.3130	6114.61	0.3139Temp 270.9	6117.89	0.3146	6117.89	0.3200	6120.83
0.3215	0.3231	6127.53	0.3247	6130.78	0.3300	6133.60	0.3316	6136.91
0.3332	0.3347	6143.09	0.3400	6145.72	0.3415	6148.63	0.3430	6151.55
0.3446	0.3500	6157.76	0.3515	6160.81	0.3531	6163.98	0.3547	6167.01
0.3600	0.3616	6172.89	0.3632	6176.05	0.3642Temp 270.9	6178.94	0.3647	6178.94

FILE 22

0.3700	0.3715	6184.30	0.3748	6190.66	0.3800	6193.07	0.3831	6198.60
0.3900	0.3931	6209.92	0.4000	6215.47	0.4030	6220.70	0.4100	6226.30
0.4131	0.4144Temp 270.9	6231.48	0.4200	6236.84	0.4231	6242.06	0.4300	6247.42
0.4330	0.4400	6252.78	0.4431	6263.53	0.4500	6267.94	0.4531	6272.97
0.4600	0.4630	6277.98	0.4647Temp 271.0	6282.87	0.4700	6287.80	0.4731	6292.74
0.4800	0.4831	6297.17	0.4900	6306.71	0.4930	6311.74	0.5000	6316.27
0.5031	0.5100	6320.99	0.5131	6330.46	0.5149Temp 271.0	6334.62	0.5200	6334.62
0.5230	0.5300	6338.67	0.5331	6347.96	0.5400	6352.07	0.5431	6356.61
0.5500	0.5530	6361.07	0.5600	6369.73	0.5631	6373.44	0.5651Temp 271.0	6378.00
0.5700	0.5731	6377.72	0.5800	6385.61	0.5830	6389.80	0.5900	6393.54

FILE 23

0.5931	1.0000	6401.81	1.0031	6405.65	1.0100	6409.81	1.0131	6413.51
1.0154Temp 271.0	1.0200	6417.13	1.0230	6420.92	1.0300	6424.56	1.0331	6428.82
1.0400	1.0431	6435.97	1.0500	6439.61	1.0530	6443.62	1.0600	6447.20
1.0631	1.0657Temp 271.0	6450.26	1.0700	6453.87	1.0731	6457.51	1.0800	6460.80
1.0830	1.0900	6464.27	1.0931	6471.31	1.1000	6474.37	1.1031	6477.59
1.1100	1.1130	6481.16	1.1200	6487.47	1.1203Temp 271.0	6490.35	1.1231	6490.35
1.1300	1.1331	6493.84	1.1400	6499.97	1.1430	6503.30	1.1500	6506.35
1.1531	1.1600	6509.60	1.1631	6515.82	1.1700	6517.90	1.1704Temp 271.2	6521.24
1.1730	1.1800	6521.24	1.1831	6526.82	1.1900	6529.93	1.1931	6532.77
1.2000	1.2030	6535.66	1.2100	6541.58	1.2131	6544.20	1.2200	6546.73

FILE 24

ROBERT
Schlumberger

1.2207Temp 271.2	6552.22	1.2300	6552.22	1.2330	6555.27	1.2400	6558.42
1.2431 6560.31	1.2531 6565.79	1.2531 6576.17	1.2709Temp 271.2	1.2600 6578.08	1.2600 6568.54	1.2630 6571.17	1.2831 6581.18
1.2700 6573.35	1.2700 6585.90	1.3000 6588.49	1.3212Temp 271.2	1.3031 6590.99	1.3031 6590.99	1.3100 6593.33	1.3300 6602.74
1.2900 6583.49	1.3200 6598.27	1.3431 6609.91	1.3431 6609.91	1.3230 6600.90	1.3530 6614.53	1.3500 6612.31	1.3731 6623.39
1.3131 6595.78	1.3400 6607.72	1.3700 6621.12	1.3700 6621.12	1.3715Temp 271.2	1.4000 6634.17	1.4000 6634.17	1.4217Temp 271.2
1.3331 6605.42	1.3631 6619.29	1.3900 6629.93	1.3900 6629.93	1.3931 6631.64	1.4217Temp 271.2	1.4217Temp 271.2	6652.26
1.3600 6616.44	1.3830 6627.84	1.4130 6640.47	1.4130 6640.47	1.4200 6642.39	1.4430 6650.51	1.4430 6650.51	
1.4031 6636.03	1.4100 6638.43	1.4331 6648.85	1.4331 6648.85	1.4400 6650.51			
1.4231 6644.80	1.4300 6646.55						

FILE 25

1.4500 6654.59	1.4600 6658.58	1.4631 6660.54	1.4700 6662.57
1.4720Temp 271.2	1.4800 6666.15	1.4831 6668.02	1.4900 6670.15
1.4931 6671.65	1.5030 6675.74	1.5100 6677.09	1.5131 6679.10
1.5200 6681.54	1.5231 6682.95	1.5300 6684.73	1.5330 6686.15
1.5400 6687.95	1.5500 6691.81	1.5531 6694.02	1.5600 6695.03
1.5630 6696.87	1.5724Temp 271.2	1.5731 6700.04	1.5800 6701.82
1.5831 6703.35	1.5930 6706.61	2.0000 6708.27	2.0031 6709.75
2.0100 6711.98	2.0200 6714.74	2.0227Temp 271.2	2.0230 6716.03
2.0300 6717.84	2.0400 6720.96	2.0431 6722.74	2.0500 6723.97
2.0530 6726.12	2.0631 6728.36	2.0700 6730.00	2.0729Temp 271.2

FILE 26

2.0733 6731.77	2.0800 6734.45	2.0900 6735.99	2.0931 6737.56
2.1000 6738.76	2.1100 6741.51	2.1130 6743.10	2.1200 6744.19
2.1232Temp 271.2	2.1300 6747.41	2.1331 6748.53	2.1400 6749.89
2.1430 6751.33	2.1531 6754.37	2.1600 6756.01	2.1631 6756.63
2.1700 6757.96	2.1734Temp 271.2	2.1800 6760.68	2.1831 6761.87
2.1900 6762.90	2.2000 6765.68	2.2030 6767.24	2.2100 6768.22
2.2131 6769.51	2.2231 6772.00	2.2236Temp 271.2	2.2300 6773.29
2.2330 6774.43	2.2431 6776.61	2.2500 6777.61	2.2531 6779.15
2.2600 6780.40	2.2700 6782.53	2.2731 6783.70	2.2739Temp 271.2
2.2800 6785.11	2.2900 6787.10	2.2930 6788.44	2.3000 6789.65

FILE 27

2.3031 6790.68	2.3100 6791.82	2.3200 6793.90	2.3230 6794.89
2.3241Temp 271.2	2.3300 6796.08	2.3400 6798.14	2.3431 6799.32
2.3500 6800.34	2.3530 6801.62	2.3631 6803.16	2.3700 6805.04
2.3731 6805.39	2.3744Temp 271.2	2.3830 6807.65	2.3900 6808.12
2.3931 6809.35	2.4000 6810.37	2.4100 6811.96	2.4130 6813.33
2.4200 6814.30	2.4231 6814.96	2.4300 6816.53	2.4331 6817.11
2.4400 6818.15	2.4430 6818.95	2.4531 6820.78	2.4600 6821.68
2.4631 6823.02	2.4700 6824.01	2.4749Temp 271.2	2.4800 6825.55
2.4831 6826.38	2.4900 6827.23	2.5000 6828.72	2.5030 6829.50
2.5100 6830.86	2.5131 6831.49	2.5231 6833.19	2.5251Temp 271.2

FILE 28

2.5300 6833.91	2.5400 6835.36	2.5431 6836.88	2.5500 6837.43
2.5531 6837.79	2.5630 6839.60	2.5700 6840.75	2.5731 6840.98
2.5800 6841.88	2.5831 6842.55	2.5900 6843.17	2.5930 6843.67
3.0000 6845.20	3.0100 6846.52	3.0131 6847.35	3.0200 6847.61
3.0230 6848.61	3.0300 6849.36	3.0331 6849.96	3.0400 6851.18
3.0431 6852.00	3.0500 6853.22	3.0600 6853.82	3.0631 6854.92
3.0700 6855.39	3.0731 6856.03	3.0800 6856.81	3.0830 6857.70
3.0900 6857.97	3.0931 6859.05	3.1031 6860.48	3.1100 6861.09
3.1130 6861.64	3.1200 6862.57	3.1231 6863.32	3.1310Temp 271.2
3.1331 6864.28	3.1400 6865.29	3.1430 6865.84	6866.66

FILE 29

LOSTRA
Schumbarger

3.1600	6867.88	3.1700	6869.22	3.1730	6869.57	3.1800	6870.53
3.1813Temp	271.4	3.1900	6871.67	3.1931	6872.45	3.2000	6872.81
3.2030	6873.34	3.2131	6874.03	3.2200	6875.45	3.2231	6875.88
3.2300	6876.47	3.2330	6877.01	3.2400	6877.47	3.2431	6879.05
3.2500	6878.83	3.3347	6628.92	3.3400	6629.88	3.3431	6629.88
3.3500	6630.89	3.3600	6632.74	3.3631	6633.36	3.3700	6634.16
3.3731	6634.74	3.3830	6636.50	3.3848Temp	255.7	3.3900	6636.08
3.3931	6637.10	3.4031	6638.97	3.4100	6639.71	3.4130	6640.57
3.4200	6641.65	3.4300	6644.03	3.4331	6644.42	3.4351Temp	254.8
3.4400	6644.76	3.5042	6410.68	3.5100	6409.85	3.5131	6409.97

FILE 30

3.5200	6410.24	3.5242Temp	250.5	3.5300	6410.83	3.5330	6410.70
3.5400	6411.30	3.5443Temp	249.6	3.5500	6412.27	3.5531	6412.58
3.5600	6412.78	3.5645Temp	249.1	3.5700	6414.37	3.5731	6414.49
3.5800	6415.51	3.5846Temp	246.7	3.5900	6415.67	3.5930	6417.10
4.0000	6417.95	4.0642	6183.85	4.0700	6183.34	4.0731	6184.67
4.0800	6185.55	4.0841Temp	244.4	4.0900	6187.88	4.0931	6189.11
4.1000	6190.90	4.1042Temp	243.9	4.1100	6192.90	4.1130	6194.40
4.1200	6195.70	4.1243Temp	243.5	4.1300	6198.16	4.1331	6199.31
4.1400	6200.37	4.1444Temp	243.1	4.1500	6202.94	4.1531	6204.27
4.1600	6205.54	4.2208	5983.20	4.2239	5983.76	4.2300	5984.20

FILE 31

4.2330	5985.31	4.2400	5986.20	4.2431	5987.35	4.2500	5988.06
4.2531	5989.45	4.2600	5991.00	4.2630	5991.93	4.2700	5992.54
4.2731	5994.24	4.2800	5995.17	4.2831	5996.55	4.2900	5997.46
4.2930	5998.72	4.3000	6000.14	4.3031	6001.18	4.3100	6001.92