

FLOPET

Denne rapport
tilhører

 STATOIL

LTEK DOK.SENTER

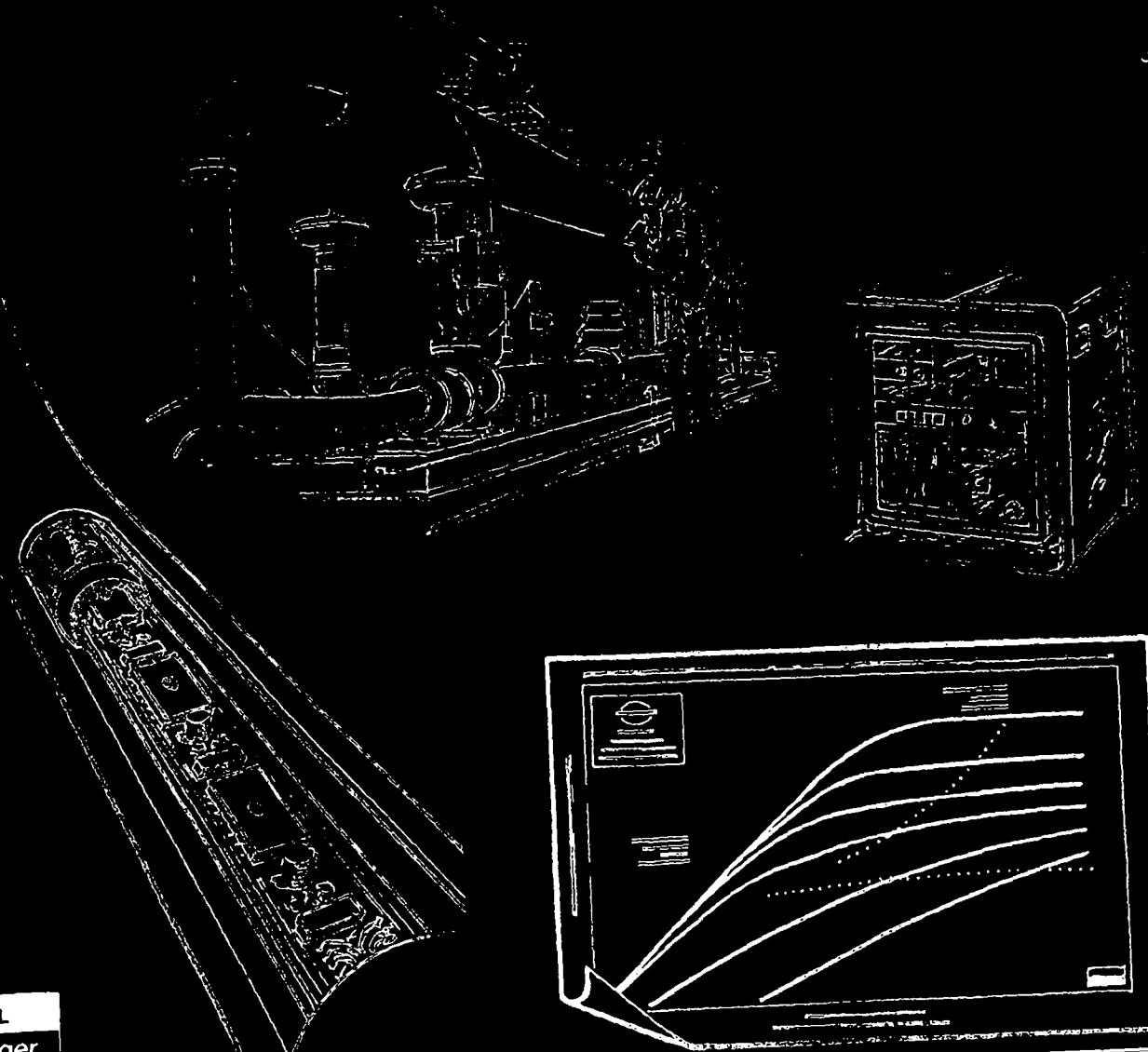
L.NR. 12483010014

KODE Well 1/9-6 nr 18

Returneres etter bruk

HIGH ACCURACY PRESSURE TEMPERATURE MEASUREMENTS

Company:	PPCO NORWAY	Country:	NORWAY
Field:	TOMMELITEN	Well:	1/9-6
Zone:	CRETATIOUS	Date:	17.09 1982



FLOPETROL
chlumberger

FLOPETROL

DISTRICT: NSD

BASE : NOB

REPORT N°: ELS 82/49

HIGH ACCURACY
PRESSURE TEMPERATURE
MEASUREMENTS

Company: PPCO NORWAY Country: NORWAY
Field: TOMMELITEN Well: 1/9-6
Zone: CRETATIOUS Date: 17.09 1982
DST NO 2A

FLOPETROLCountry : NORWAY

Section

INDEX

Field : TOMMELITENBase STAVANGERWell : 1/9-6Report No : ELS 82/49

INDEX

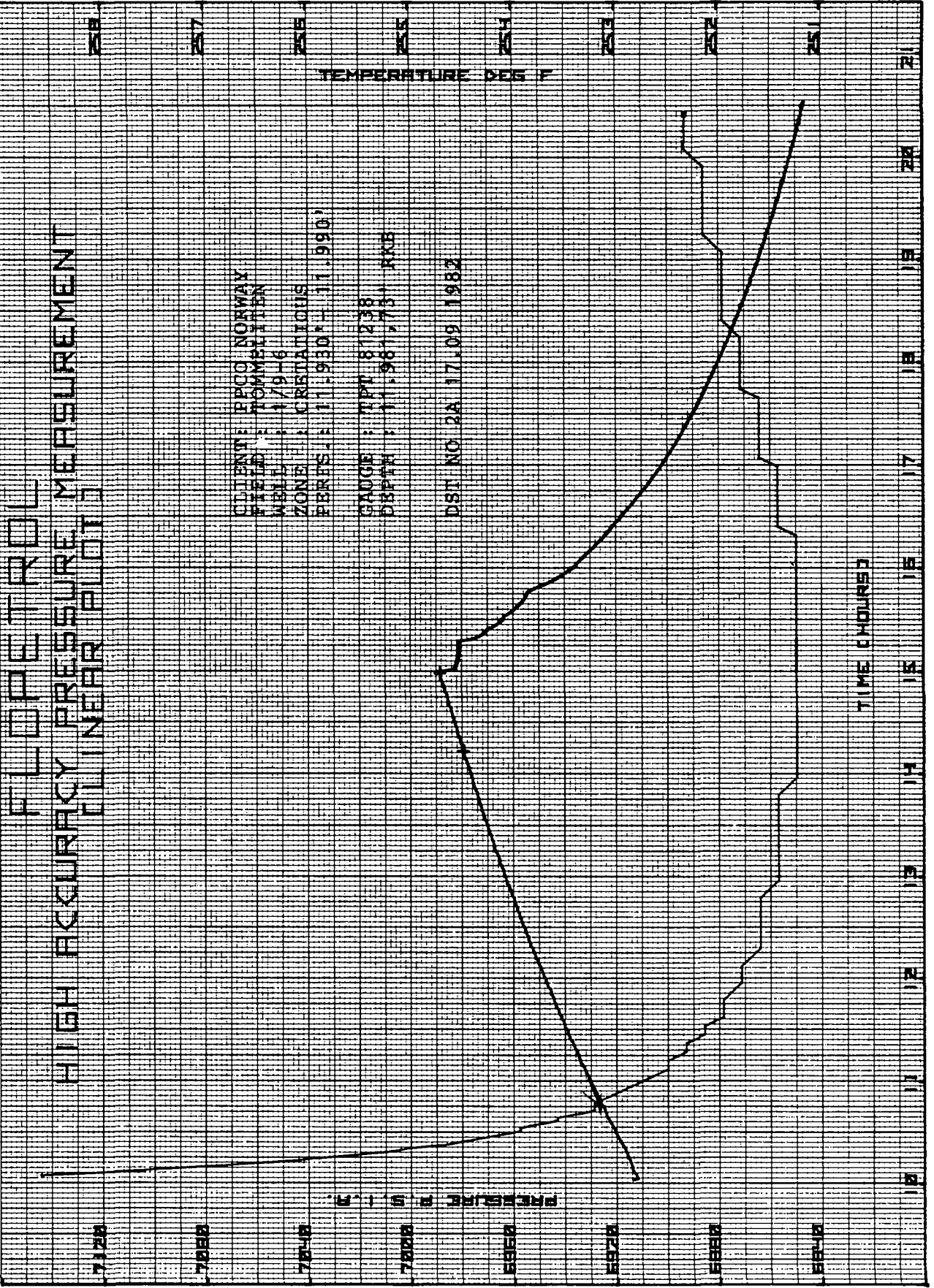
- 1 - MEASUREMENT PLOTS
- 2 - MEASUREMENT DATA
- 3 - SEQUENCE OF EVENTS
- 4 - WELL COMPLETION DATA
- 5 - LISTING OF ALL DATA RECORDED
- 6 -
- 7 -

Flopetrol operator :

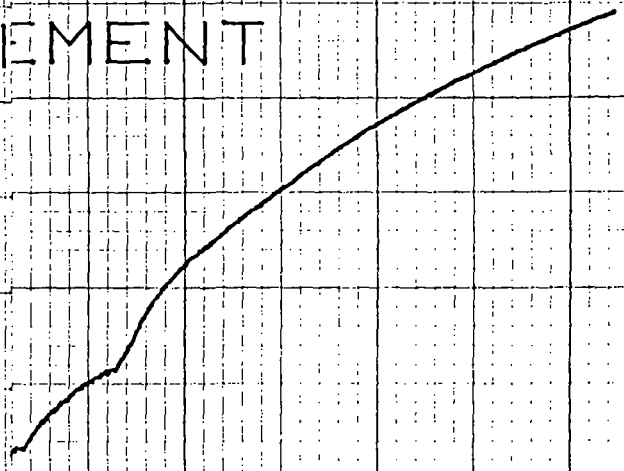
P. STETE

Company representative :

J. HAMILTON, S. JONES, E. HODCROFT



H I M E N T



LOG DELTA P (PSI/A)

DRAW DOWN

CLIENT : PPCO NORWAY

FIELD : TOMMELITEN

WELL : 1/9 - 6

ZONE : CRETATIOUS

PERF. : 11,930 - 11,990 Ft.

GAUGE : TPT 81238

DEPTH : 11,981.73 Ft.

DST No. 2 A

DATE : 17th SEPT. '82

SHUT IN TIME : 15.00.17

SHUT IN PRESS. : 6988.07 PSI 'A'

□



FLOPETROL
HIGH ACCURACY PRESSURE MEASUREMENTS
[PLAYBACK]

SEMI LOG PLOT DRAW DOWN
PART 1

7020
7000
6980
6960
6940
6920
6900
6880
6860
6840
6820

PRESSURE
P.S.I.A.

START TIME
DELTA T
[MIN. IN SS]
15.0.17

CLIENT : PPCO NORWAY
FIELD : TOMMELITEN
WELL : 1/9 - 6
ZONE : CRETATIOUS
PERF. : 11,930 - 11,990 Ft.
GAUGE : TPT 81238
DEPTH : 11,981.73 Ft.
DST No. 2 A
DATE : 17th SEPT. '82

THIS PLOT MADE BY REQUEST
AND IS NOT NECESSARILY
RELEVANT TO THIS PARTICULAR
TEST INTERPRETATION.

0.0
0.0
DELTA T
0.0
0.1
[CONF]

FLOPETROL
HIGH ACCURACY PRESSURE MEASUREMENTS
[PLAYBACK]

SEMI LOG PLOT DRAW DOWN
PART 2

7020
7000
6960
6960
6940
6920
6900
6880
6860
6840
6820

PRESSURE
P.S.I.A.

CLIENT : PPCO NORWAY

FIELD : TOMMELITEN

WELL : 1/9 - 6

ZONE : CRETATIOUS

PERF : 11,930 - 11,990 Ft.

GAUGE : TPT 81238

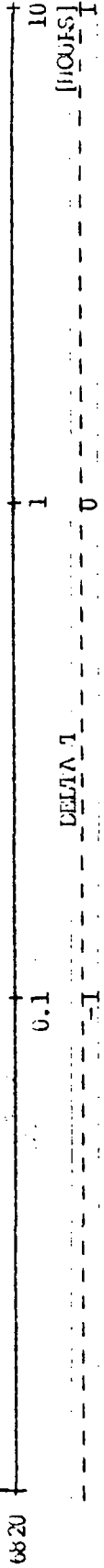
DEPTH : 11,981.73 ft.

DST No. 2 A

DATE : 17th SEPT. '82

THIS PLOT MADE BY REQUEST
AND IS NOT NECESSARILY
RELEVANT TO THIS PARTICULAR
TEST INTERPRETATION.

START TIME
DELTA T
[HR.:MM:SS]
15. 0.17





DST NO 2A PERFORATIONS: 11.930'-11.990'

SECTION 2
PAGE 1

FLOPETROL
PRESSURE & TEMPERATURE CALCULATIONS

TIME	PRESS.	TEMP.	DEL.T	LOG DEL.T	DEL.P	LOG DEL.P	REMARKS
HR.MM.SS	PSIA	DEG.F	(HOURS)		PSIA		
10. 3. 0	6911.71						
10. 4. 0	6911.99	256.6					
10. 5. 0	6912.27						
10. 6. 0	6912.66						
10. 7. 0	6913.37	257.9					
10. 8. 0	6913.53						
10. 9. 0	6914.03	257.4					
10.10. 0	6913.79	256.3					
10.11. 0	6914.09						
10.12. 0	6914.39						
10.13. 0	6914.69						
10.14. 0	6914.82						
10.15. 0	6915.27	255.9					
10.16. 0	6915.33						
10.17. 0	6915.82	255.6					
10.18. 0	6915.81						
10.20. 0	6916.43	255.2					
10.25. 0	6918.21	258.0					
10.30. 0	6920.30	254.9					
10.35. 0	6921.63	253.9					
10.40. 0	6923.75	253.6					
10.45. 0	6925.12	253.2					
10.50. 0	6926.65	253.2					
10.55. 0	6928.58	253.0					
11. 0. 0	6930.09	252.9					
11. 5. 0	6931.63	252.7					
11.10. 0	6933.16	252.5					
11.15. 0	6934.74	252.5					
11.20. 0	6936.25	252.3					
11.25. 0	6938.09	252.3					
11.30. 0	6939.06	252.1					
11.35. 0	6940.54	252.1					
11.40. 0	6942.14	252.0					
11.45. 0	6943.66	252.0					
11.50. 0	6944.86	252.0					
11.55. 0	6946.46						
12. 0. 0	6947.67	251.8					
12. 5. 0	6948.99						
12.10. 0	6950.47	251.8					
12.15. 0	6951.98						
12.20. 0	6953.31	251.6					
12.25. 0	6954.13						

32

33

34

35



FLOPETROL
PRESSURE & TEMPERATURE CALCULATIONS

SECTION 2
PAGE 2

REMARKS

TIME HR. MN. SS	PRESS. PSIA	TEMP. DEG. F	DEL. T (HOURS)	LOC DEL. T	DEL. P PSIA	LOC DEL. P	REMARKS
12.30.0	6955.73	251.6					
12.35.0	6956.95						
12.40.0	6958.28	251.6					
12.45.0	6959.43						
12.50.0	6960.77	251.6					
12.55.0	6961.77						
13.0.0	6963.12	251.4					
13.5.0	6964.21						
13.10.0	6965.20	251.4					
13.15.0	6966.86						
13.20.0	6967.72	251.4					
13.25.0	6968.64						
13.30.0	6969.99	251.4					
13.35.0	6971.06						
13.40.0	6972.23	251.4					
13.45.0	6973.33						
13.50.0	6974.43	251.4					
13.55.0	6975.56						
14.0.0	6976.54	251.2					
14.5.0	6977.48						
14.10.0	6978.63	251.2					
14.15.0	6979.65	251.2					
14.20.0	6980.58	251.2					
14.25.0	6981.68						
14.30.0	6982.70	251.2					
14.35.0	6983.74						
14.40.0	6984.95	251.2					
14.45.0	6985.57						
14.50.0	6986.52	251.2					
14.55.0	6987.72						
15.0.0	6988.35	251.2					
15.0.15	6988.20	251.2					
15.0.17	6988.07		0.0000	-3.2553	0.19	-0.7212	WELL OPENED
15.0.19	6987.88	251.2	0.0006	-2.9542	0.15	-0.8239	15. 0.17
15.0.21	6987.92		0.0011	-2.7782	0.59	-0.2291	SHUT IN PRES.
15.0.23	6987.48		0.0017	-2.6532	1.10	0.0414	6986.07
15.0.25	6986.97		0.0022	-2.5563	1.16	0.0645	
15.0.27	6986.91		0.0028	-2.4771	1.87	0.2718	
15.0.29	6986.20		0.0033	-2.4102	2.01	0.3032	
15.0.31	6986.06		0.0039	-2.3522	2.44	0.3874	
15.0.33	6985.63	251.2	0.0044	-2.3010	2.89	0.4609	
15.0.35	6985.18		0.0050				CHOKE SIZE 16/64" ADJ:



FLOPETROL
PRESSURE & TEMPERATURE CALCULATIONS

SECTION 2
PAGE 3

REMARKS

TIME HR.-MIN.-SS	PRESS. PSIA	TEMP. DEG.F	DEL.T (HOURS)	LOG DEL.T	DEL.P PSIA	LOG DEL.P
15. 0.36	6985.54		0.0053	-2.2775	2.53	0.4031
15. 0.38	6985.12		0.0056	-2.2341	2.95	0.4658
15. 0.40	6984.92		0.0064	-2.1946	3.15	0.4983
15. 0.42	6984.78		0.0069	-2.1584	3.29	0.5172
15. 0.44	6984.45		0.0075	-2.1249	3.62	0.5587
15. 0.46	6984.27	251.2	0.0081	-2.0939	3.80	0.5798
15. 0.48	6984.16		0.0086	-2.0649	3.91	0.5922
15. 0.50	6983.86		0.0092	-2.0378	4.21	0.6243
15. 0.52	6983.60		0.0097	-2.0122	4.47	0.6503
15. 0.54	6983.98		0.0103	-1.9881	4.09	0.6117
15. 0.56	6983.51		0.0108	-1.9652	4.56	0.6550
15. 0.58	6983.70		0.0114	-1.9435	4.37	0.6405
15. 1. 0	6983.31	251.2	0.0119	-1.9228	4.76	0.6776
15. 1. 2	6983.49		0.0125	-1.9031	4.59	0.6618
15. 1. 4	6983.66		0.0131	-1.8842	4.41	0.6444
15. 1. 6	6983.18		0.0136	-1.8661	4.89	0.6893
15. 1. 8	6982.89		0.0142	-1.8487	5.18	0.7143
15. 1.10	6983.10		0.0147	-1.8320	4.97	0.6964
15. 1.12	6982.62		0.0153	-1.8159	5.45	0.7364
15. 1.14	6982.80		0.0158	-1.8004	5.27	0.7218
15. 1.16	6982.54	251.2	0.0164	-1.7855	5.53	0.7427
15. 1.18	6982.77		0.0169	-1.7710	5.30	0.7243
15. 1.20	6982.64		0.0175	-1.7570	5.43	0.7348
15. 1.22	6982.60		0.0181	-1.7434	5.47	0.7380
15. 1.24	6982.22		0.0186	-1.7302	5.86	0.7679
15. 1.26	6982.67		0.0192	-1.7175	5.40	0.7324
15. 1.28	6982.22		0.0197	-1.7050	5.86	0.7679
15. 1.30	6982.53		0.0203	-1.6930	5.54	0.7435
15. 1.32	6982.22	251.2	0.0208	-1.6812	5.85	0.7672
15. 1.34	6982.15		0.0214	-1.6698	5.92	0.7723
15. 1.36	6982.44		0.0219	-1.6587	5.63	0.7505
15. 1.38	6982.49		0.0225	-1.6478	5.58	0.7466
15. 1.40	6982.62		0.0231	-1.6372	5.45	0.7364
15. 1.42	6982.24		0.0236	-1.6269	5.83	0.7657
15. 1.44	6982.46		0.0242	-1.6168	5.61	0.7490
15. 1.46	6982.31	251.2	0.0247	-1.6069	5.76	0.7604
15. 1.48	6982.17		0.0253	-1.5973	5.90	0.7709
15. 1.50	6982.16		0.0256	-1.5878	5.91	0.7716
15. 1.52	6982.21		0.0264	-1.5786	5.86	0.7679
15. 1.54	6982.50		0.0269	-1.5695	5.57	0.7459
15. 1.56	6982.58		0.0275	-1.5607	5.49	0.7396
15. 1.58	6982.49		0.0281	-1.5520	5.58	0.7466



FLUETROL
PRESSURE & TEMPERATURE CALCULATIONS

SECTION 2
PAGE 5

REMARKS

LOG DEL.P

DEL.P
PSIA

LOG DEL.T

DEL.T
(HOURS)

TEMP.
DEG.F

PRESS.
PSIA

TIME
HR.MN.SS

TIME HR.MN.SS	PRESS. PSIA	TEMP. DEG.F	DEL.T (HOURS)	LOG DEL.T	DEL.P PSIA	LOG DEL.P
15. 3.24	6981.88		0.0519	-1.2845	6.19	0.7917
15. 3.26	6981.75		0.0525	-1.2798	6.32	0.8007
15. 3.28	6981.93		0.0531	-1.2753	6.14	0.7882
15. 3.30	6981.93		0.0536	-1.2707	6.14	0.7882
15. 3.32	6982.29	251.2	0.0542	-1.2663	5.78	0.7619
15. 3.34	6982.25		0.0547	-1.2618	5.82	0.7649
15. 3.36	6982.06		0.0553	-1.2574	6.01	0.7789
15. 3.38	6981.93		0.0558	-1.2531	6.14	0.7882
15. 3.40	6982.16		0.0564	-1.2488	5.91	0.7716
15. 3.42	6982.08		0.0569	-1.2445	5.99	0.7774
15. 3.44	6982.06		0.0575	-1.2403	6.01	0.7789
15. 3.46	6982.07	251.2	0.0581	-1.2362	6.00	0.7782
15. 3.48	6981.93		0.0586	-1.2320	6.14	0.7882
15. 3.50	6982.22		0.0592	-1.2279	5.85	0.7672
15. 3.52	6981.97		0.0597	-1.2239	6.10	0.7853
15. 3.54	6981.92		0.0603	-1.2198	6.15	0.7889
15. 3.56	6981.82		0.0608	-1.2159	6.25	0.7959
15. 3.58	6981.73		0.0614	-1.2119	6.34	0.8021
15. 4. 0	6981.83	251.2	0.0619	-1.2080	6.24	0.7952
15. 4. 2	6981.89		0.0625	-1.2041	6.19	0.7917
15. 4. 4	6981.94		0.0631	-1.2003	6.13	0.7875
15. 4. 6	6981.79		0.0636	-1.1965	6.28	0.7980
15. 4. 8	6982.16		0.0642	-1.1927	5.91	0.7716
15. 4.10	6981.88		0.0647	-1.1889	6.19	0.7917
15. 4.12	6982.11		0.0653	-1.1852	5.96	0.7752
15. 4.14	6982.24		0.0658	-1.1816	5.83	0.7657
15. 4.16	6982.11	251.2	0.0664	-1.1779	5.96	0.7752
15. 4.18	6981.92		0.0669	-1.1743	6.15	0.7889
15. 4.20	6981.81		0.0675	-1.1707	6.26	0.7966
15. 4.22	6981.64		0.0681	-1.1671	6.43	0.8082
15. 4.24	6981.83		0.0686	-1.1636	6.25	0.7959
15. 4.26	6982.01		0.0692	-1.1601	6.06	0.7825
15. 4.28	6981.71		0.0697	-1.1566	6.36	0.8035
15. 4.30	6982.02		0.0703	-1.1532	6.05	0.7818
15. 4.32	6981.88	251.2	0.0708	-1.1498	6.19	0.7917
15. 4.34	6981.81		0.0714	-1.1464	6.26	0.7966
15. 4.36	6981.68		0.0719	-1.1430	6.39	0.8055
15. 4.38	6981.68		0.0725	-1.1397	6.39	0.8055
15. 4.40	6981.67		0.0731	-1.1363	6.40	0.8062
15. 4.42	6981.93		0.0736	-1.1331	6.14	0.7882
15. 4.44	6981.44		0.0742	-1.1298	6.63	0.8215
15. 4.46	6981.93	251.2	0.0747	-1.1266	6.14	0.7882

FLOPETROL
PRESSURE & TEMPERATURE CALCULATIONS

SECTION 2
PAGE 6

REMARKS

LOC DEL..P

DEL.P
PSIA

LOC DEL..T

DEL.T
(HOURS)

TEMP.
DEG.F

TIME
HR./MIN./SS

PRESS.
PSIA

TIME HR./MIN./SS	PRESS. PSIA	TEMP. DEG.F	DEL.T (HOURS)	LOC DEL..T	DEL.P PSIA	LOC DEL..P
15. 4.48	6981.74		0.0753	-1.1233	6.33	0.8014
15. 4.50	6981.86		0.0758	-1.1201	6.21	0.7931
15. 4.52	6981.75		0.0764	-1.1170	6.32	0.8007
15. 4.54	6982.04		0.0769	-1.1138	6.03	0.7803
15. 4.56	6982.00		0.0775	-1.1107	6.07	0.7832
15. 4.58	6981.95		0.0781	-1.1076	6.12	0.7868
15. 5. 0	6982.03	251.2	0.0786	-1.1045	6.04	0.7810
15. 5. 2	6981.87		0.0792	-1.1015	6.20	0.7924
15. 5. 4	6981.71		0.0797	-1.0984	6.36	0.8035
15. 5. 6	6981.99		0.0803	-1.0954	6.08	0.7839
15. 5. 8	6981.94		0.0808	-1.0924	6.13	0.7875
15. 5.10	6981.85		0.0814	-1.0894	6.22	0.7938
15. 5.12	6981.81		0.0819	-1.0865	6.26	0.7966
15. 5.14	6981.94		0.0825	-1.0835	6.13	0.7875
15. 5.16	6981.86	251.2	0.0831	-1.0806	6.21	0.7931
15. 5.18	6981.71		0.0836	-1.0777	6.36	0.8035
15. 5.20	6981.49		0.0842	-1.0749	6.58	0.8182
15. 5.22	6981.88		0.0847	-1.0720	6.19	0.7917
15. 5.24	6981.68		0.0853	-1.0692	6.39	0.8055
15. 5.26	6981.61		0.0858	-1.0663	6.46	0.8102
15. 5.28	6981.64		0.0864	-1.0635	6.43	0.8082
15. 5.30	6981.62	251.2	0.0869	-1.0608	6.45	0.8096
15. 5.32	6981.57		0.0875	-1.0580	6.50	0.8129
15. 5.34	6981.51		0.0881	-1.0552	6.56	0.8169
15. 5.36	6981.46		0.0886	-1.0525	6.61	0.8202
15. 5.38	6981.89		0.0892	-1.0498	6.22	0.7938
15. 5.40	6981.38		0.0897	-1.0471	6.69	0.8254
15. 5.42	6981.87		0.0903	-1.0444	6.20	0.7924
15. 5.44	6981.78		0.0908	-1.0418	6.29	0.7987
15. 5.46	6981.86		0.0914	-1.0391	6.21	0.7931
15. 5.48	6981.80		0.0919	-1.0365	6.27	0.7973
15. 5.50	6981.48		0.0925	-1.0339	6.59	0.8189
15. 5.52	6981.76		0.0931	-1.0313	6.31	0.8000
15. 5.54	6981.58		0.0936	-1.0287	6.49	0.8122
15. 5.56	6981.38		0.0942	-1.0261	6.69	0.8254
15. 5.58	6981.56		0.0947	-1.0235	6.50	0.8129
15. 6. 0	6981.36		0.0953	-1.0210	6.71	0.8267
15. 6. 2	6981.74	251.2	0.0958	-1.0185	6.33	0.8014
15. 6. 4	6981.41		0.0964	-1.0160	6.66	0.8235
15. 6. 6	6981.80		0.0969	-1.0135	6.27	0.7973
15. 6. 8	6981.79		0.0975	-1.0110	6.26	0.7980
15. 6.10	6981.83		0.0981	-1.0085	6.24	0.7952



FLOPETROL
PRESSURE & TEMPERATURE CALCULATIONS

SECTION 2
PAGE 7

REMARKS

TIME HR. MN. SS	PRESS. PSIA	TEMP. DEG. F.	DEL.T (HOURS)	LOG DEL.T	DEL.P PSIA	LOG DEL.P
15. 6.12	6981.52		0.0986	-1.0061	6.55	0.8162
15. 6.14	6981.76		0.0992	-1.0036	6.31	0.8000
15. 6.16	6981.37	251.2	0.0997	-1.0012	6.70	0.8261
15. 6.18	6981.34		0.1003	-0.9988	6.73	0.8280
15. 6.20	6981.35		0.1008	-0.9964	6.72	0.8274
15. 6.22	6981.21		0.1014	-0.9940	6.86	0.8363
15. 6.24	6981.34		0.1019	-0.9916	6.73	0.8280
15. 6.26	6981.48		0.1025	-0.9893	6.59	0.8189
15. 6.28	6981.30		0.1031	-0.9869	6.77	0.8306
15. 6.30	6981.43	251.2	0.1036	-0.9846	6.64	0.8222
15. 6.32	6981.29		0.1042	-0.9823	6.78	0.8312
15. 6.34	6981.15		0.1047	-0.9800	6.92	0.8401
15. 6.36	6981.49		0.1053	-0.9773	6.58	0.8182
15. 6.38	6981.55		0.1058	-0.9754	6.52	0.8142
15. 6.40	6981.53		0.1064	-0.9731	6.54	0.8156
15. 6.42	6981.32		0.1069	-0.9708	6.75	0.8293
15. 6.44	6981.62		0.1075	-0.9686	6.45	0.8096
15. 6.46	6981.65	251.2	0.1081	-0.9664	6.42	0.8075
15. 6.48	6981.35		0.1086	-0.9641	6.72	0.8274
15. 6.50	6981.62		0.1092	-0.9619	6.45	0.8096
15. 6.52	6981.29		0.1097	-0.9597	6.78	0.8312
15. 6.54	6981.19		0.1103	-0.9575	6.88	0.8376
15. 6.56	6981.16		0.1108	-0.9553	6.51	0.8395
15. 6.58	6981.27		0.1114	-0.9532	6.80	0.8325
15. 7. 0	6981.13	251.2	0.1119	-0.9510	6.94	0.8414
15. 7. 2	6981.39		0.1125	-0.9488	6.69	0.8254
15. 7. 4	6981.64		0.1131	-0.9467	6.43	0.8082
15. 7. 6	6981.29		0.1136	-0.9446	6.79	0.8319
15. 7. 8	6981.04		0.1142	-0.9425	7.03	0.8470
15. 7.10	6981.32		0.1147	-0.9404	6.76	0.8299
15. 7.12	6980.95		0.1153	-0.9383	7.12	0.8525
15. 7.14	6981.23		0.1158	-0.9362	6.84	0.8351
15. 7.16	6981.07	251.2	0.1164	-0.9341	7.00	0.8451
15. 7.18	6981.14		0.1169	-0.9320	6.93	0.8407
15. 7.20	6981.05		0.1175	-0.9300	7.02	0.8463
15. 7.22	6981.13		0.1181	-0.9279	6.94	0.8414
15. 7.24	6981.50		0.1186	-0.9259	6.57	0.8176
15. 7.26	6981.17		0.1192	-0.9238	6.90	0.8388
15. 7.28	6981.54		0.1197	-0.9218	6.53	0.8149
15. 7.30	6981.39		0.1203	-0.9198	6.66	0.8248
15. 7.32	6981.13	251.2	0.1208	-0.9178	6.94	0.8414
15. 7.34	6981.12		0.1214	-0.9158	6.95	0.8420

FIGURE 1
PRESSURE & TEMPERATURE CALCULATIONS

SECTION 2
PAGE 8

REMARKS

TIME	HR.MI.SS	PIESS.	TEMP.	DEL.T	LOG DEL.T	DEL.P	LOG DEL.P	LOG DEL.P
		FSIA	DEG.F	(HOURS)		FSIA		
15. 7.36		6981.55		0.1219	-0.9138	6.52	0.8142	
15. 7.39		6981.57		0.1225	-0.9119	6.50	0.8129	
15. 7.40		6981.39		0.1231	-0.9099	6.68	0.8246	
15. 7.42		6981.15		0.1236	-0.9079	6.92	0.8401	
15. 7.44		6981.41		0.1242	-0.9060	6.66	0.8235	
15. 7.46		6981.19	251.2	0.1247	-0.9041	6.88	0.8376	
15. 7.48		6981.32		0.1253	-0.9021	6.75	0.8293	
15. 7.50		6981.15		0.1258	-0.9002	6.92	0.8401	
15. 7.52		6981.47		0.1264	-0.8983	6.60	0.8195	
15. 7.54		6981.07		0.1269	-0.8964	7.00	0.8451	
15. 7.56		6980.95		0.1275	-0.8945	7.12	0.8525	
15. 7.58		6980.97		0.1281	-0.8926	7.10	0.8513	
15. 8. 0		6980.93	251.2	0.1286	-0.8907	7.14	0.8537	
15. 8. 2		6981.18		0.1292	-0.8888	6.90	0.8388	
15. 8. 4		6981.42		0.1297	-0.8870	6.65	0.8228	
15. 8. 6		6981.04		0.1303	-0.8851	7.03	0.8470	
15. 8. 8		6981.08		0.1308	-0.8833	6.99	0.8445	
15. 8.10		6981.00		0.1314	-0.8814	7.07	0.8494	
15. 8.12		6980.95		0.1319	-0.8796	7.12	0.8525	
15. 8.14		6980.99		0.1325	-0.8778	7.08	0.8500	
15. 8.16		6981.08	251.2	0.1331	-0.8760	6.99	0.8445	
15. 8.18		6981.30		0.1336	-0.8742	6.77	0.8306	
15. 8.20		6981.18		0.1342	-0.8724	6.89	0.8382	
15. 8.22		6980.97		0.1347	-0.8706	7.10	0.8513	
15. 8.24		6981.40		0.1353	-0.8688	6.67	0.8241	
15. 8.26		6981.43		0.1358	-0.8670	6.64	0.8222	
15. 8.28		6981.34		0.1364	-0.8652	6.73	0.8280	
15. 8.30		6981.37	251.2	0.1369	-0.8635	6.70	0.8261	
15. 8.32		6981.30		0.1375	-0.8617	6.77	0.8306	
15. 8.34		6981.23		0.1381	-0.8599	6.84	0.8351	
15. 8.36		6980.97		0.1386	-0.8582	7.10	0.8513	
15. 8.38		6981.34		0.1392	-0.8565	6.73	0.8280	
15. 8.40		6980.95		0.1397	-0.8547	7.11	0.8519	
15. 8.42		6981.44		0.1403	-0.8530	6.63	0.8215	
15. 8.44		6981.46		0.1408	-0.8513	6.61	0.8202	
15. 8.46		6981.39	251.2	0.1414	-0.8496	6.68	0.8248	
15. 8.48		6981.36		0.1419	-0.8479	6.71	0.8267	
15. 8.50		6981.19		0.1425	-0.8462	6.88	0.8376	
15. 8.52		6981.10		0.1431	-0.8445	6.97	0.8432	
15. 8.54		6980.92		0.1436	-0.8428	7.15	0.8543	
15. 8.56		6981.05		0.1442	-0.8411	7.01	0.8457	
15. 8.58		6981.27		0.1447	-0.8395	6.80	0.8325	

FLOPETROL
PRESSURE & TEMPERATURE CALCULATIONS

SECTION 2
PAGE 9

REMARKS

TIME HR:MM:SS	PRESS. PSIA	TEMP. DEG.F	DEL.T (HOURS)	LOG DEL.T	DEL.P PSIA	LOG DEL.P	REMARKS
15. 9. 0	6981.10		0.1453	-0.8378	6.97	0.8432	
15. 9. 2	6981.32	251.2	0.1458	-0.8361	6.75	0.8293	
15. 9. 4	6981.13		0.1464	-0.8345	6.94	0.8414	
15. 9. 6	6981.01		0.1469	-0.8328	7.06	0.8468	
15. 9. 8	6980.94		0.1475	-0.8312	7.13	0.8531	
15. 9.10	6980.97		0.1481	-0.8296	7.10	0.8513	
15. 9.12	6981.08		0.1486	-0.8279	6.99	0.8445	
15. 9.14	6981.05		0.1492	-0.8263	7.02	0.8463	
15. 9.16	6981.23	251.2	0.1497	-0.8247	6.84	0.8351	
15. 9.18	6981.00		0.1503	-0.8231	7.07	0.8494	
15. 9.20	6980.91		0.1508	-0.8215	7.16	0.8549	
15. 9.22	6980.94		0.1514	-0.8199	7.13	0.8531	
15. 9.24	6980.85		0.1519	-0.8183	7.22	0.8585	
15. 9.26	6981.14		0.1525	-0.8167	6.93	0.8407	
15. 9.28	6981.12		0.1531	-0.8152	6.95	0.8420	
15. 9.30	6981.16	251.2	0.1536	-0.8136	6.91	0.8395	
15. 9.32	6981.07		0.1542	-0.8120	7.00	0.8451	
15. 9.34	6980.99		0.1547	-0.8104	7.08	0.8500	
15. 9.36	6981.44		0.1553	-0.8089	6.63	0.8215	
15. 9.38	6981.33		0.1558	-0.8073	6.74	0.8267	
15. 9.40	6961.34		0.1564	-0.8058	6.73	0.8280	
15. 9.42	6981.19		0.1569	-0.8043	6.88	0.8376	
15. 9.44	6981.29		0.1575	-0.8027	6.78	0.8312	
15. 9.46	6981.34	251.2	0.1581	-0.8012	6.73	0.8280	
15. 9.48	6961.29		0.1586	-0.7997	6.78	0.8312	
15. 9.50	6981.10		0.1592	-0.7981	6.97	0.8432	
15. 9.52	6980.94		0.1597	-0.7966	7.13	0.8531	
15. 9.54	6980.93		0.1603	-0.7951	7.14	0.8537	
15. 9.56	6981.21		0.1608	-0.7936	6.86	0.8363	
15. 9.58	6981.22		0.1614	-0.7921	6.85	0.8357	
15.10. 0	6981.39	251.2	0.1619	-0.7906	6.68	0.8248	
15.10. 2	6981.25		0.1625	-0.7891	6.82	0.8338	
15.10. 4	6981.11		0.1631	-0.7877	6.96	0.8426	
15.10. 6	6980.97		0.1636	-0.7862	7.10	0.8513	
15.10. 8	6981.31		0.1642	-0.7847	6.76	0.8299	
15.10.10	6980.94		0.1647	-0.7832	7.13	0.8531	
15.10.12	6981.39		0.1653	-0.7818	6.68	0.8248	
15.10.14	6981.28		0.1658	-0.7803	6.79	0.8319	
15.10.16	6981.30		0.1664	-0.7789	6.77	0.8306	
15.10.18	6981.09	251.2	0.1669	-0.7774	6.98	0.8439	
15.10.20	6981.26		0.1675	-0.7760	6.81	0.8331	
15.10.22	6981.29		0.1681	-0.7745	6.78	0.8312	

FLOPETROL
PRESSURE & TEMPERATURE CALCULATIONS

SECTION 2
PAGE 10

REMARKS

TIME HR. MIN. SS	PRESS. PSIA	TEMP. DEG. F	DEL. T (HOURS)	LOG DEL. T	DEL. P FSIA	LOG DEL. P
15.10.30	6980.95		0.1703	-0.7688	7.12	0.8525
15.10.40	6980.93	251.2	0.1731	-0.7618	7.14	0.8537
15.10.50	6981.05	251.2	0.1758	-0.7549	7.02	0.8463
15.11.0	6981.32	251.2	0.1786	-0.7481	6.75	0.8293
15.11.10	6980.99		0.1814	-0.7414	7.08	0.8500
15.11.20	6981.26	251.2	0.1842	-0.7348	6.81	0.8331
15.11.30	6980.77	251.2	0.1869	-0.7283	7.30	0.8633
15.11.40	6981.09		0.1897	-0.7219	6.98	0.8439
15.11.50	6980.93	251.2	0.1925	-0.7156	7.14	0.8537
15.12.0	6980.97		0.1953	-0.7093	7.10	0.8513
15.12.10	6980.87	251.2	0.1981	-0.7032	7.20	0.8573
15.12.20	6980.94	251.2	0.2008	-0.6972	7.13	0.8531
15.12.30	6981.33	251.2	0.2036	-0.6912	6.74	0.8287
15.12.40	6981.33		0.2064	-0.6853	6.74	0.8287
15.12.50	6981.28	251.2	0.2092	-0.6795	6.79	0.8319
15.13.0	6980.93	251.2	0.2119	-0.6738	7.14	0.8537
15.13.10	6980.97		0.2147	-0.6681	7.10	0.8513
15.13.20	6980.93	251.2	0.2175	-0.6625	7.14	0.8537
15.13.30	6980.93		0.2203	-0.6570	7.14	0.8537
15.13.40	6980.89	251.2	0.2231	-0.6516	7.18	0.8561
15.13.50	6980.80	251.2	0.2258	-0.6462	7.27	0.8615
15.14.0	6980.92		0.2286	-0.6409	7.15	0.8543
15.14.10	6981.28	251.2	0.2314	-0.6357	6.79	0.8319
15.14.20	6980.69	251.2	0.2342	-0.6305	7.38	0.8681
15.14.30	6980.88	251.2	0.2369	-0.6254	7.19	0.8567
15.14.40	6981.05		0.2397	-0.6203	7.02	0.8463
15.14.50	6981.12	251.2	0.2425	-0.6153	6.95	0.8420
15.15.0	6980.86		0.2453	-0.6103	7.21	0.8579
15.15.10	6980.74	251.2	0.2481	-0.6055	7.33	0.8651
15.15.20	6981.08	251.2	0.2508	-0.6006	6.99	0.8445
15.15.30	6980.67	251.2	0.2536	-0.5958	7.40	0.8692
15.16.0	6981.05	251.2	0.2564	-0.5910	7.02	0.8463
15.16.30	6981.06	251.2	0.2703	-0.5682	7.01	0.8457
15.17.0	6980.51	251.2	0.2786	-0.5550	7.56	0.8785
15.17.30	6980.54	251.2	0.2869	-0.5422	7.53	0.8768
15.18.0	6980.19	251.2	0.2953	-0.5298	7.88	0.8965
15.18.30	6977.75		0.3036	-0.5177	10.33	1.0141
15.19.0	6975.94	251.2	0.3119	-0.5059	12.13	1.0839
15.19.30	6974.65		0.3203	-0.4945	13.22	1.1212
15.20.0	6973.96		0.3286	-0.4833	14.11	1.1495
15.20.30	6972.89		0.3369	-0.4724	15.18	1.1813
15.21.0	6972.63		0.3453	-0.4616	15.44	1.1886

CHOKES SWITCHED TO

16/64" FIXED



FLOETROL
 PRESSURE & TEMPERATURE CALCULATIONS

SECTION 2
 PAGE 11

REMARKS

TIME HR:MIN:SS	PRESS. PSIA	TEMP. DEG.F	DEL.T (HOURS)	LOG DEL.T	DEL.P PSIA	LOG DEL.P
15.21.30	6971.90		0.3536	-0.4515	16.17	1.2087
15.22.0	6971.71		0.3619	-0.4414	16.36	1.2138
15.22.30	6970.96		0.3703	-0.4315	17.11	1.2333
15.23.0	6970.94		0.3786	-0.4218	17.13	1.2338
15.23.30	6970.47		0.3869	-0.4124	17.60	1.2455
15.24.0	6970.01	251.2	0.3953	-0.4031	18.06	1.2567
15.24.30	6969.49		0.4036	-0.3940	18.58	1.2690
15.25.0	6969.13		0.4119	-0.3852	18.94	1.2774
15.25.30	6968.07		0.4203	-0.3765	20.00	1.3010
15.26.0	6967.53		0.4286	-0.3679	20.54	1.3126
15.26.30	6966.87		0.4369	-0.3596	21.20	1.3263
15.27.0	6966.58		0.4453	-0.3514	21.49	1.3322
15.27.30	6965.89		0.4536	-0.3433	22.19	1.3462
15.28.0	6965.34		0.4619	-0.3354	22.73	1.3566
15.28.30	6964.86		0.4703	-0.3276	23.21	1.3657
15.29.0	6964.05	251.2	0.4786	-0.3200	23.22	1.3659
15.29.30	6964.07		0.4869	-0.3125	24.00	1.3802
15.30.0	6964.12		0.4953	-0.3052	23.95	1.3793
15.30.30	6963.84		0.5036	-0.2979	24.23	1.3844
15.31.0	6963.72		0.5119	-0.2908	24.35	1.3865
15.31.30	6963.40		0.5203	-0.2838	24.67	1.3922
15.32.0	6963.46		0.5286	-0.2769	24.61	1.3911
15.32.30	6962.70		0.5369	-0.2701	25.37	1.4043
15.33.0	6961.99		0.5453	-0.2634	26.08	1.4163
15.33.30	6961.48		0.5536	-0.2568	26.62	1.4252
15.34.0	6961.07	251.2	0.5619	-0.2503	27.00	1.4314
15.34.30	6960.41		0.5703	-0.2439	27.66	1.4419
15.35.0	6960.02		0.5786	-0.2376	28.05	1.4479
15.35.30	6959.71		0.5869	-0.2314	28.36	1.4527
15.36.0	6959.13		0.5953	-0.2253	28.94	1.4615
15.36.30	6959.12		0.6036	-0.2192	28.95	1.4616
15.37.0	6958.19		0.6119	-0.2133	29.88	1.4754
15.37.30	6958.28		0.6203	-0.2074	29.79	1.4741
15.38.0	6957.89		0.6286	-0.2016	30.18	1.4797
15.38.30	6957.60		0.6369	-0.1959	30.47	1.4839
15.39.0	6957.20	251.2	0.6453	-0.1903	30.87	1.4895
15.39.30	6956.61		0.6536	-0.1847	31.47	1.4979
15.40.0	6956.38		0.6619	-0.1792	31.69	1.5009
15.40.30	6956.24		0.6703	-0.1737	31.83	1.5028
15.41.0	6955.90		0.6786	-0.1684	32.17	1.5075
15.41.30	6955.74		0.6869	-0.1631	32.33	1.5096
15.42.0	6955.39		0.6953	-0.1578	32.68	1.5143

FLOPETROL
PRESSURE & TEMPERATURE CALCULATIONS

SECTION 2
FACE 12

REMARKS

LOG DEL.P

DEL.P
PSIA

LOG DEL.T

DEL.T
(HOURS)

TEMP.
DEG.F

PRESS.
PSIA

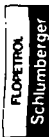
TIME
HR.MM.SS.

60

15.42.30	6955.06	0.7036	-0.1527	33.02	1.5188
15.43.0	6954.94	0.7119	-0.1476	33.13	1.5202
15.43.30	6954.81	0.7203	-0.1425	33.26	1.5219
15.44.0	6954.66	0.7286	-0.1375	33.41	1.5239
15.44.30	6954.74	0.7369	-0.1326	33.33	1.5228
15.45.0	6954.23	0.7453	-0.1277	33.84	1.5294
15.45.30	6954.02	0.7536	-0.1229	34.05	1.5321
15.46.0	6954.22	0.7619	-0.1181	33.85	1.5296
15.46.30	6953.33	0.7703	-0.1134	34.74	1.5408
15.47.0	6952.93	0.7786	-0.1087	35.14	1.5458
15.47.30	6952.44	0.7869	-0.1041	35.63	1.5518
15.48.0	6951.59	0.7953	-0.0995	36.48	1.5621
15.48.30	6950.71	0.8036	-0.0950	37.36	1.5724
15.49.0	6950.23	0.8119	-0.0905	37.84	1.5780
15.49.30	6949.23	0.8203	-0.0860	38.84	1.5893
15.50.0	6948.47	0.8286	-0.0816	39.60	1.5977
15.50.30	6947.84	0.8369	-0.0773	40.23	1.6046
15.51.0	6946.42	0.8453	-0.0730	41.65	1.6196
15.51.30	6945.79	0.8536	-0.0687	42.28	1.6261
15.52.0	6945.24	0.8619	-0.0645	42.83	1.6317
15.52.30	6944.71	0.8703	-0.0603	43.36	1.6371
15.53.0	6944.04	0.8786	-0.0562	44.03	1.6437
15.53.30	6943.02	0.8869	-0.0521	45.05	1.6537
15.54.0	6942.47	0.8953	-0.0480	45.60	1.6590
15.54.30	6942.27	0.9036	-0.0440	45.80	1.6609
15.55.0	6941.51	0.9119	-0.0400	46.56	1.6680
15.55.30	6940.74	0.9203	-0.0361	47.33	1.6751
15.56.0	6940.43	0.9286	-0.0322	47.64	1.6780
15.56.30	6939.89	0.9369	-0.0283	48.18	1.6829
15.57.0	6939.45	0.9453	-0.0244	48.62	1.6868
15.57.30	6939.16	0.9536	-0.0206	48.90	1.6893
15.58.0	6938.44	0.9619	-0.0169	49.63	1.6957
15.58.30	6937.94	0.9703	-0.0131	50.13	1.7001
15.59.0	6937.48	0.9786	-0.0094	50.59	1.7041
15.59.30	6937.03	0.9869	-0.0057	51.04	1.7079
16.0.0	6936.61	0.9953	-0.0021	51.46	1.7115
16.0.30	6936.56	1.0036	0.0016	51.51	1.7119
16.1.0	6935.62	1.0119	0.0052	52.45	1.7197
16.1.30	6935.06	1.0203	0.0087	53.02	1.7244
16.2.0	6934.92	1.0286	0.0123	53.15	1.7255
16.2.30	6934.72	1.0369	0.0158	53.35	1.7271
16.3.0	6934.62	1.0453	0.0192	53.45	1.7279

61

62



FLOPETROL
PRESSURE & TEMPERATURE CALCULATIONS

REMARKS

63

LOG DEL.P

DEL.P
PSIA

LOG DEL.T

DEL.T
(HOURS)

TEMP.
DEG.F

PRESS.
PSIA

TIME
HR:MIN:SS

16. 3.30	6934.26	1.0536	0.0227	53.81	1.7309
16. 4. 0	6933.60	1.0619	0.0261	54.27	1.7346
16. 4.30	6933.51	1.0703	0.0295	54.56	1.7369
16. 5. 0	6933.05	1.0786	0.0329	55.02	1.7405
16. 5.30	6933.19	1.0869	0.0362	54.88	1.7394
16. 6. 0	6932.83	1.0953	0.0395	55.24	1.7423
16. 6.30	6932.02	1.1036	0.0428	56.05	1.7486
16. 7. 0	6931.68	1.1119	0.0461	56.39	1.7512
16. 7.30	6931.46	1.1203	0.0493	56.61	1.7529
16. 8. 0	6931.13	1.1286	0.0525	56.94	1.7554
16. 8.30	6930.75	1.1369	0.0557	57.32	1.7583
16. 9. 0	6930.76	1.1453	0.0589	57.31	1.7582
16. 9.30	6930.32	1.1536	0.0621	57.75	1.7616
16.10. 0	6929.86	1.1619	0.0652	58.21	1.7650
16.10.30	6929.49	1.1703	0.0683	58.58	1.7677
16.11. 0	6929.12	1.1786	0.0714	58.95	1.7705
16.11.30	6928.54	1.1869	0.0744	59.53	1.7747
16.12. 0	6928.40	1.1953	0.0775	59.67	1.7758
16.12.30	6927.94	1.2036	0.0805	60.13	1.7791
16.13. 0	6927.70	1.2119	0.0835	60.37	1.7808
16.13.30	6927.30	1.2203	0.0865	60.77	1.7837
16.14. 0	6926.90	1.2286	0.0894	61.17	1.7865
16.14.30	6926.74	1.2369	0.0924	61.33	1.7877
16.15. 0	6926.23	1.2453	0.0953	61.84	1.7913
16.16. 0	6925.85	1.2619	0.1010	62.22	1.7939
16.17. 0	6925.22	1.2786	0.1067	62.85	1.7983
16.18. 0	6924.32	1.2953	0.1124	63.75	1.8045
16.19. 0	6923.99	1.3119	0.1179	64.08	1.8067
16.20. 0	6923.65	1.3286	0.1234	64.42	1.8090
16.21. 0	6922.85	1.3453	0.1288	65.22	1.8144
16.22. 0	6922.07	1.3619	0.1342	66.00	1.8195
16.23. 0	6921.91	1.3786	0.1394	66.16	1.8206
16.24. 0	6921.15	1.3953	0.1447	66.92	1.8256
16.25. 0	6920.71	1.4119	0.1498	67.36	1.8284
16.26. 0	6919.91	1.4286	0.1549	68.16	1.8335
16.27. 0	6919.30	1.4453	0.1600	68.77	1.8374
16.28. 0	6918.81	1.4619	0.1649	69.26	1.8405
16.29. 0	6918.06	1.4786	0.1699	70.01	1.8452
16.30. 0	6917.76	1.4953	0.1747	70.31	1.8470
16.31. 0	6916.92	1.5119	0.1795	71.15	1.8522
16.32. 0	6916.41	1.5286	0.1843	71.66	1.8553
16.33. 0	6915.80	1.5453	0.1890	72.27	1.8590

64

65

66

FLOPETROL
PRESSURE & TEMPERATURE CALCULATIONS

SECTION 2
PAGE 14

REMARKS

67

68

69

70

71

TIME HR. MN. SS.	PRESS. PSIA	TEMP. DEG. F	DEL. T (HOURS)	LOG DEL. T	DEL. P PSIA	LOG DEL. P	REMARKS
16.34.0	6915.27	251.4	1.5619	0.1937	72.80	1.8621	
16.35.0	6914.57		1.5786	0.1983	73.50	1.8663	
16.36.0	6913.95		1.5953	0.2028	74.12	1.8699	
16.37.0	6913.58		1.6119	0.2074	74.49	1.8721	
16.38.0	6912.92		1.6286	0.2118	75.15	1.8759	
16.39.0	6912.43	251.4	1.6453	0.2162	75.64	1.8788	
16.40.0	6911.86		1.6619	0.2206	76.21	1.8820	
16.41.0	6911.26		1.6786	0.2250	76.81	1.8854	
16.42.0	6910.83		1.6953	0.2292	77.24	1.8878	
16.43.0	6910.24		1.7119	0.2335	77.83	1.8911	
16.44.0	6909.68	251.4	1.7286	0.2377	78.39	1.8943	
16.45.0	6909.14		1.7453	0.2419	78.93	1.8972	
16.46.0	6908.67		1.7619	0.2460	79.40	1.8998	
16.47.0	6908.07		1.7786	0.2501	80.00	1.9031	
16.48.0	6907.50		1.7953	0.2541	80.57	1.9062	
16.49.0	6907.04		1.8119	0.2581	81.03	1.9086	
16.50.0	6906.59	251.4	1.8286	0.2621	81.48	1.9111	
16.51.0	6905.93		1.8453	0.2661	82.14	1.9146	
16.52.0	6905.62		1.8619	0.2700	82.45	1.9162	
16.53.0	6905.10		1.8786	0.2738	82.97	1.9189	
16.54.0	6904.50		1.8953	0.2777	83.49	1.9216	
16.55.0	6904.14	251.4	1.9119	0.2815	83.93	1.9239	
16.56.0	6903.66		1.9286	0.2852	84.41	1.9264	
16.57.0	6903.22		1.9453	0.2890	84.85	1.9287	
16.58.0	6902.64		1.9619	0.2927	85.43	1.9316	
16.59.0	6902.27		1.9786	0.2964	85.80	1.9335	
17.0.0	6901.81	251.4	1.9953	0.3000	86.26	1.9358	
17.1.0	6901.27		2.0119	0.3036	86.80	1.9385	
17.2.0	6901.01		2.0286	0.3072	87.06	1.9398	
17.3.0	6900.50		2.0453	0.3108	87.57	1.9424	
17.4.0	6899.89		2.0619	0.3143	88.18	1.9454	
17.5.0	6899.59	251.6	2.0786	0.3178	88.48	1.9468	
17.6.0	6899.09		2.0953	0.3212	88.98	1.9493	
17.7.0	6898.61		2.1119	0.3247	89.46	1.9516	
17.8.0	6898.35		2.1286	0.3281	89.72	1.9529	
17.9.0	6897.90		2.1453	0.3315	90.17	1.9551	
17.10.0	6897.45	251.6	2.1619	0.3348	90.62	1.9572	
17.11.0	6896.98		2.1786	0.3382	91.09	1.9595	
17.12.0	6896.60		2.1953	0.3415	91.47	1.9613	
17.13.0	6896.23		2.2119	0.3448	91.84	1.9630	
17.14.0	6895.75		2.2286	0.3480	92.32	1.9653	
17.15.0	6895.39	251.6	2.2453	0.3513	92.68	1.9670	

FLOPETROL
PRESSURE & TEMPERATURE CALCULATIONS

SECTION 2
PAGE 16

REMARKS

TIME (HOURS)	PRESS. PSIA	TEMP. DEG.F	DEL.T (HOURS)	LOG DEL.T	LOG DEL.T	DEL.P PSIA	LOG DEL.P
17.58.0	6880.45		2.9619	0.4716	107.62	2.0319	
17.59.0	6880.12		2.9786	0.4740	107.55	2.0332	
18.0.0	6879.62	251.6	2.9953	0.4764	108.25	2.0344	
18.1.0	6879.38		3.0119	0.4788	108.69	2.0362	
18.2.0	6879.09		3.0286	0.4812	108.98	2.0373	
18.3.0	6878.76		3.0453	0.4836	109.31	2.0387	
18.4.0	6878.53		3.0619	0.4860	109.54	2.0396	
18.5.0	6878.30	251.8	3.0786	0.4884	109.77	2.0405	
18.6.0	6877.93		3.0953	0.4907	110.14	2.0419	
18.7.0	6877.73		3.1119	0.4930	110.34	2.0427	
18.8.0	6877.39		3.1286	0.4954	110.66	2.0441	
18.9.0	6877.12		3.1453	0.4977	110.95	2.0451	
18.10.0	6876.74		3.1619	0.5000	111.33	2.0466	
18.11.0	6876.48		3.1786	0.5022	111.59	2.0476	
18.12.0	6876.21		3.1953	0.5045	111.86	2.0487	
18.13.0	6875.81		3.2119	0.5068	112.26	2.0502	
18.14.0	6875.76		3.2286	0.5090	112.31	2.0504	
18.15.0	6875.34	251.8	3.2453	0.5113	112.73	2.0520	
18.20.0	6874.00		3.3286	0.5223	114.07	2.0572	
18.25.0	6872.71	252.0	3.4119	0.5330	115.36	2.0621	
18.30.0	6871.44		3.4953	0.5435	116.63	2.0668	
18.35.0	6869.98	252.0	3.5786	0.5537	118.09	2.0722	
18.40.0	6868.70		3.6619	0.5637	119.37	2.0769	
18.45.0	6867.44	252.0	3.7453	0.5735	120.63	2.0815	
18.50.0	6866.35		3.8286	0.5830	121.71	2.0853	
18.55.0	6865.06	252.0	3.9119	0.5924	123.01	2.0899	
19.0.0	6863.98		3.9953	0.6015	124.09	2.0937	
19.5.0	6862.68	252.0	4.0786	0.6105	125.39	2.0983	
19.10.0	6861.47		4.1619	0.6193	126.60	2.1024	
19.15.0	6860.59	252.1	4.2453	0.6279	127.48	2.1054	
19.20.0	6859.46		4.3286	0.6363	128.61	2.1093	
19.25.0	6858.35	252.1	4.4119	0.6446	129.72	2.1130	
19.30.0	6857.36		4.4953	0.6528	130.71	2.1163	
19.35.0	6855.93	252.1	4.5786	0.6607	132.14	2.1210	
19.40.0	6855.30		4.6619	0.6686	132.77	2.1231	
19.45.0	6854.55	252.1	4.7453	0.6763	133.51	2.1255	
19.50.0	6853.36		4.8286	0.6838	134.71	2.1294	
19.55.0	6852.49	252.1	4.9119	0.6913	135.58	2.1322	
20.0.0	6851.43		4.9953	0.6986	136.64	2.1356	
20.5.0	6850.51	252.3	5.0786	0.7057	137.56	2.1385	
20.10.0	6849.59		5.1619	0.7128	138.48	2.1414	
20.15.0	6848.60	252.3	5.2453	0.7198	139.47	2.1445	



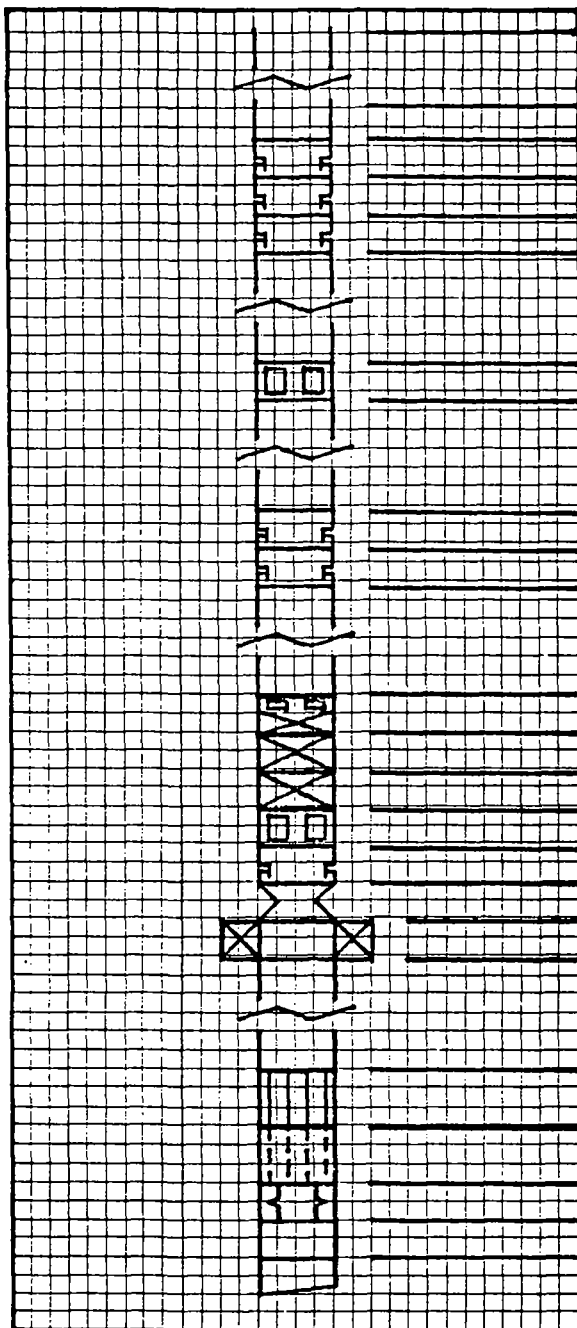
FLOPETROL
PRESSURE & TEMPERATURE CALCULATIONS

SECTION 2
PAGE 17

REMARKS

TIME HR:MM:SS	PRESS: PSIA	TEMP: DEG:F	DEL:T (HOURS)	LOG DEL:T	DEL:P PSIA	LOG DEL:P	REMARKS
20.16. 0	6848.26		5.2619	0.7211	139.81	2.1455	
20.17. 0	6848.46		5.2786	0.7225	139.61	2.1449	
20.18. 0	6848.38		5.2953	0.7239	139.69	2.1452	
20.19. 0	6848.19		5.3119	0.7253	139.88	2.1458	
20.20. 0	6847.93		5.3286	0.7266	140.14	2.1466	
20.21. 0	6847.82		5.3453	0.7280	140.25	2.1469	
20.22. 0	6847.51		5.3619	0.7293	140.56	2.1479	
20.23. 0	6847.69		5.3786	0.7307	140.38	2.1473	
20.24. 0	6846.89		5.3953	0.7320	141.18	2.1488	
20.25. 0	6847.00	252.3	5.4119	0.7334	141.07	2.1494	
20.26. 0	6847.14		5.4286	0.7347	140.93	2.1490	
20.27. 0	6846.93		5.4453	0.7360	141.14	2.1497	
20.28. 0	6846.80		5.4619	0.7373	141.27	2.1500	
20.29. 0	6846.21		5.4786	0.7387	141.86	2.1519	
20.30. 0	6846.40		5.4953	0.7400	141.67	2.1513	
20.31. 0	6846.27		5.5119	0.7413	141.80	2.1517	LOST SIGNAL FROM GAUGE, CABLE CUT BY APR "M" VALVE

-WELL COMPLETION DATA-



5" TUBING

3 1/2" TUBING

SLIP JOINT OPEN

SLIP JOINT CLOSED

SLIP JOINT CLOSED

4 3/4" DRILL COLLARS

RTTS CIRCULATING VALVE AT 11.602'

4 3/4" DRILL COLLARS

SLIP JOINT CLOSED

SLIP JOINT CLOSED

4 3/4" DRILL COLLARS

APR "M" AT 11.820'

DRILL PIPE TESTER VALVE 11.825'

APR "N" AT 11.838'

HYDRAULIC BYPASS VALVE AT 11.844'

BIG JOHN JARS AT 11.850'

SAFETY JOINT AT 11.853'

RTTS PACKER AT 11.853'

3 1/2" DRILL PIPE

BUNDLE CARRIER AT 11.929'

PERFORATED JOINT AT 11.939'

"F" NIPPLE AT 11.942'

2 3/8" TUBING

MULE SHOE AT 12.003'

REMARKS

DRAWING SCHEMATIC ONLY
NOT TO SCALE

* LISTING OF ALL DATA *
* ON TAPE *

TEMPERATURE IN DEG F
PRESSURE IN PSI A
TIME IN HH.MM.SS

10.0216Temp 259.5 10.0218 6913.21 10.0300 6911.71 10.0512Temp 258.6 10.0513 6912.33
 10.0600 6912.66 10.0700 6913.37 10.0710Temp 257.5 10.0800 6913.53 10.0900 6914.03
 10.0907Temp 257.4 10.1000 6913.79 10.1306Temp 256.3 10.1308 6914.73 10.1400 6914.82
 10.1500 6915.27 10.1503Temp 255.9 10.1600 6915.33 10.1700 6915.82 10.1703Temp 255.6
 10.1800 6915.81 10.1900 6916.41 10.1902Temp 255.2 10.2000 6916.43 10.2100 6916.84
 10.2103Temp 255.0 10.2200 6917.20 10.2300 6917.55 10.2303Temp 254.7 10.2400 6918.25
 10.2500 6918.21 10.2503Temp 254.5 10.2600 6918.83 10.2700 6919.21 10.2703Temp 254.3
 10.2800 6919.49 10.2900 6919.89 10.2903Temp 254.1 10.3000 6920.30 10.3100 6920.22
 10.3103Temp 253.9 10.3200 6920.87 10.3300 6921.18 10.3400 6921.45 10.3702Temp 253.6
 10.3500 6921.83 10.3600 6922.38

FILE

10.3800 6923.13 10.3900 6923.35 10.3903Temp 253.6 10.4000 6923.75 10.4100 6923.81
 10.4102Temp 253.4 10.4200 6924.13 10.4300 6924.49 10.4303Temp 253.2 10.4400 6924.63
 10.4500 6925.12 10.4503Temp 253.2 10.4600 6925.47 10.4700 6925.92 10.4703Temp 253.2
 10.4800 6926.16 10.4900 6926.63 10.5000 6926.65 10.5100 6927.02 10.5200 6927.75
 10.5205Temp 253.0 10.5301 6927.50 10.5401 6928.27 10.5500 6928.58 10.5601 6928.70
 10.5701 6929.09 10.5707Temp 252.9 10.5802 6929.39 10.5902 6929.73 11.0000 6930.09
 11.0100 6930.34 11.0201 6930.84 11.0209Temp 252.7 11.0301 6930.84 11.0402 6931.29
 11.0500 6931.63 11.0600 6931.97 11.0700 6932.37 11.0711Temp 252.5 11.0801 6932.45
 11.0901 6933.08 11.1000 6933.16 11.1101 6933.79 11.1201 6933.95 11.1212Temp 252.5
 11.1302 6934.14 11.1402 6934.55 11.1500 6934.74

FILE

11.1714Temp 252.3 11.1801 6935.17 11.1902 6936.01 11.2000 6936.25 11.2100 6936.54
 11.2200 6936.50 11.2216Temp 252.3 11.2301 6937.04 11.2401 6937.26 11.2500 6938.09
 11.2601 6938.00 11.2701 6938.55 11.2717Temp 252.1 11.2802 6938.92 11.2902 6938.71
 11.3000 6939.06 11.3100 6939.65 11.3201 6939.93 11.3218Temp 252.1 11.3301 6939.85
 11.3402 6940.33 11.3500 6940.54 11.3600 6940.99 11.3700 6941.45 11.3720Temp 252.0
 11.3801 6941.28 11.3901 6941.82 11.4000 6942.14 11.4101 6942.47 11.4201 6942.70
 11.4222Temp 252.0 11.4302 6943.13 11.4402 6943.39 11.4500 6943.66 11.4600 6943.77
 11.4701 6944.29 11.4724Temp 252.0 11.4801 6944.17 11.4902 6944.52 11.5000 6944.86
 11.5100 6945.17 11.5200 6945.36 11.5301 6945.55 11.5401 6945.75 11.5500 6946.46
 11.5601 6946.83 11.5701 6946.95 11.5725Temp 251.8 11.5802 6947.21 11.5902 6947.52

FILE

12.0000 6947.67 12.0100 6947.89 12.0201 6948.19 12.0301 6948.53 12.0402 6948.84
 12.0500 6948.95 12.0600 6949.29 12.0700 6949.59 12.0726Temp 251.8 12.0801 6949.86
 12.0901 6950.14 12.1000 6950.47 12.1101 6950.74 12.1201 6951.07 12.1302 6951.30
 12.1402 6951.63 12.1500 6951.98 12.1600 6951.94 12.1701 6952.27 12.1727Temp 251.6
 12.1801 6952.51 12.1902 6953.07 12.2000 6953.31 12.2100 6953.22 12.2200 6953.78
 12.2301 6954.06 12.2401 6953.97 12.2500 6954.13 12.2601 6954.86 12.2701 6954.90
 12.2727Temp 251.6 12.2802 6955.15 12.2902 6955.30 12.3000 6955.73 12.3100 6955.93
 12.3201 6956.28 12.3301 6956.70 12.3402 6956.97 12.3500 6956.95 12.3600 6957.15
 12.3700 6957.73 12.3728Temp 251.6 12.3801 6957.61 12.3901 6957.92 12.4000 6958.28
 12.4101 6958.36 12.4201 6958.60 12.4302 6958.97 12.4402 6959.18 12.4500 6959.43

FILE

12.4600 6959.47 12.4701 6959.76 12.4729Temp 251.6 12.4801 6959.92 12.4902 6960.35
 12.5000 6960.77 12.5100 6960.85 12.5200 6960.92 12.5301 6961.30 12.5401 6961.70
 12.5500 6961.77 12.5601 6962.40 12.5701 6962.36 12.5730Temp 251.4 12.5802 6962.80
 12.5902 6962.85 13.0000 6963.12 13.0100 6963.27 13.0201 6963.60 13.0301 6963.70
 13.0402 6963.83 13.0500 6964.21 13.0600 6964.52 13.0700 6964.91 13.0730Temp 251.4
 13.0801 6965.33 13.0901 6965.04 13.1000 6965.20 13.1101 6965.69 13.1201 6965.77
 13.1302 6965.95 13.1402 6966.26 13.1500 6966.86 13.1600 6967.04 13.1701 6967.24
 13.1731Temp 251.4 13.1801 6967.30 13.1902 6967.48 13.2100 6967.94 13.2200 6968.16
 13.2301 6968.32 13.2401 6968.49 13.2500 6968.64 13.2601 6969.06 13.2701 6969.39
 13.2732Temp 251.4 13.2802 6969.56

R. P. Schumberger

37

13.3100	6970.01	13.3301	6970.62	13.3402	6971.07	13.3500	6971.06
13.3600	6971.47	13.3732Temp	251.4	13.3801	6972.50	13.3902	6973.52
13.4000	6972.23	13.4201	6972.74	13.4302	6973.50	13.4401	6973.94
13.4500	6973.33	13.4701	6973.80	13.4734Temp	251.4	13.4801	6975.26
13.4902	6974.04	13.5100	6974.48	13.5200	6974.83	13.5301	6975.26
13.5401	6975.41	13.5601	6975.73	13.5701	6975.69	13.5735Temp	251.2
13.5802	6976.21	14.0000	6976.54	14.0100	6976.64	14.0201	6976.65
14.0301	6977.32	14.0500	6977.48	14.0600	6977.81	14.0700	6978.00
14.0736Temp	251.2	14.0901	6978.61	14.1000	6978.63	14.1101	6978.78
14.1201	6979.09	14.1238Temp	251.2	14.1300	6979.15	14.1327	0.00

FILE

38

14.1340	6979.38	14.1347	6979.26	14.1348	6979.20	14.1349	6979.49
14.1350	6979.36	14.1353	6979.56	14.1354	6979.33	14.1356	6979.38
14.1357	6979.58	14.1400	6979.30	14.1402	6979.37	14.1403	6979.42
14.1405	6979.37	14.1407	6979.32	14.1408	6979.15	14.1410	6979.13
14.1411	6979.39	14.1414	6979.42	14.1415	6979.47	14.1416	6979.54
14.1417	6979.48	14.1419	6979.48	14.1421	6979.45	14.1423	6979.36
14.1424	6979.41	14.1427	6979.69	14.1428	6979.70	14.1429	6979.48
14.1430	6979.59	14.1432	6979.58	14.1434	6979.68	14.1435	6979.49
14.1437	6979.62	14.1438	6979.59	14.1441	6979.58	14.1442	6979.39
14.1443	6979.56	14.1444	6979.48	14.1447	6979.71	14.1448	6979.63

FILE

39

14.1451	6979.65	14.1454	6979.54	14.1455	6979.66	14.1456	6979.79
14.1457	6979.60	14.1459	6979.54	14.1502	6979.37	14.1504	6979.61
14.1505	6979.50	14.1506Temp	251.2	14.1509	6979.75	14.1510	6979.56
14.1511	6979.37	14.1513	6979.78	14.1515	6979.57	14.1517	6979.82
14.1518	6979.75	14.1519Temp	251.2	14.1522	6979.56	14.1540	6979.84
14.1542Temp	251.2	14.1600	6979.94	14.1700	6979.98	14.1730	6980.28
14.1800	6980.18	14.1831	6980.49	14.2000	6980.58	14.2100	6980.95
14.2200	6981.01	14.2301	6981.66	14.2500	6981.68	14.2543Temp	251.2
14.2601	6981.87	14.2701	6981.83	14.2902	6982.51	14.3000	6982.70
14.3100	6982.92	14.3201	6982.94	14.3402	6983.53	14.3500	6983.74

FILE

40

14.3543Temp	251.2	14.3600	6983.94	14.3801	6984.01	14.3901	6984.39
14.4000	6984.95	14.4101	6984.76	14.4302	6985.29	14.4402	6985.50
14.4500	6985.97	14.4544Temp	251.2	14.4701	6985.72	14.4801	6986.37
14.4902	6986.53	14.5000	6986.52	14.5200	6986.72	14.5301	6987.05
14.5401	6987.50	14.5500	6987.72	14.5601	6987.98	14.5701	6987.85
14.5737	6988.03	14.5800	6988.12	14.5900	6988.25	14.5903	0.00
14.5910Temp	251.2	14.5912	6988.34	14.5915	6988.59	14.5916	6988.37
14.5917	6988.50	14.5919	6988.21	14.5921	6988.23	14.5923	6988.14
14.5924Temp	251.2	14.5926	6988.58	14.5929	6988.46	14.5930	6988.60
14.5932	6988.39	14.5933	6988.26	14.5935	6988.23	14.5937	6988.26

FILE

41

14.5951Temp	251.2	14.5952	6988.57	14.5955	6988.47	14.5956	6988.31
14.5957	6988.47	14.5959	6988.36	15.0002	6988.69	15.0004	6988.81
15.0009Temp	251.2	15.0007	6988.37	15.0009	6988.34	15.0010	6988.74
15.0011	6988.43	15.0013	6988.36	15.0015	6988.20	15.0017	6988.07
15.0016	6987.86	15.0019Temp	251.2	15.0022	6987.46	15.0023	6987.48
15.0024	6987.09	15.0026	6986.86	15.0028	6986.63	15.0029	6986.20
15.0030	6986.26	15.0032	6985.86	15.0035	6985.18	15.0036	6985.54
15.0037	6984.87	15.0038	6985.12	15.0041	6984.67	15.0042	6984.78
15.0044	6984.45	15.0045	6984.10	15.0048Temp	251.2	15.0049	6984.70
15.0050	6983.86	15.0051	6983.55	15.0054	6983.98	15.0055	6983.41

42

15.0058	6983.70	15.0059	6983.44	15.0100	6983.31	15.0103Temp	251.2	15.0104	6983.66
15.0105	6983.27	15.0107	6983.09	15.0108	6982.89	15.0109	6983.11	15.0111	6983.10
15.0112	6982.62	15.0113	6983.07	15.0114	6982.80	15.0116	6982.54	15.0118Temp	251.2
15.0119	6982.89	15.0120	6982.64	15.0121	6982.49	15.0122	6982.60	15.0123	6982.18
15.0125	6982.25	15.0126	6982.67	15.0127	6982.19	15.0129	6982.24	15.0130	6982.53
15.0132	6982.22	15.0133Temp	251.2	15.0135	6982.12	15.0136	6982.44	15.0138	6982.49
15.0139	6981.98	15.0140	6982.62	15.0141	6982.32	15.0143	6982.16	15.0144	6982.46
15.0145	6982.38	15.0146Temp	251.2	15.0148	6982.17	15.0149	6981.98	15.0150	6982.16
15.0152	6982.21	15.0153	6982.09	15.0154	6982.50	15.0156	6982.58	15.0157	6982.11
15.0158	6982.49	15.0159	6982.06	15.0200	6982.53	15.0203Temp	251.2	15.0204	6982.54

FILE

43

15.0208	6982.13	15.0210	6982.28	15.0211	6981.96	15.0212	6982.18	15.0214	6982.29
15.0215	6982.05	15.0216	6982.21	15.0218Temp	251.2	15.0219	6982.50	15.0220	6982.20
15.0221	6982.18	15.0223	6982.00	15.0224	6982.41	15.0225	6982.13	15.0226	6982.38
15.0228	6982.49	15.0229	6982.21	15.0230	6982.46	15.0233Temp	251.2	15.0234	6981.97
15.0235	6982.41	15.0237	6982.46	15.0238	6982.16	15.0239	6982.55	15.0241	6982.38
15.0242	6982.13	15.0243	6981.98	15.0244	6982.28	15.0246	6982.15	15.0248Temp	251.2
15.0249	6982.14	15.0250	6982.06	15.0251	6982.45	15.0252	6982.01	15.0253	6982.45
15.0255	6982.40	15.0256	6982.19	15.0257	6982.35	15.0259	6982.45	15.0300	6982.04
15.0302	6982.04	15.0303Temp	251.2	15.0305	6982.50	15.0306	6982.05	15.0308	6982.21
15.0309	6982.43	15.0310	6982.09	15.0311	6982.17	15.0313	6982.04	15.0314	6981.97

FILE

44

15.0317	6981.93	15.0319Temp	251.2	15.0321	6982.11	15.0322	6982.20	15.0323	6982.10
15.0324	6981.88	15.0326	6981.75	15.0327	6982.19	15.0328	6981.93	15.0329	6981.94
15.0330	6981.93	15.0332	6982.29	15.0333Temp	251.2	15.0335	6982.23	15.0336	6982.06
15.0337	6982.20	15.0338	6981.93	15.0340	6982.16	15.0341	6982.30	15.0342	6982.08
15.0344	6982.06	15.0345	6981.96	15.0346	6982.07	15.0348Temp	251.2	15.0349	6981.86
15.0350	6982.22	15.0351	6981.95	15.0353	6981.99	15.0354	6981.92	15.0355	6982.02
15.0404	6981.82	15.0405	6981.73	15.0407	6981.85	15.0408	6981.83	15.0409	6981.90
15.0411	6981.87	15.0412	6982.11	15.0413	6981.76	15.0414	6982.24	15.0416	6982.11
15.0418Temp	251.2	15.0419	6981.83	15.0420	6981.81	15.0421	6982.11	15.0422	6981.64

FILE

45

15.0426	6982.01	15.0427	6981.76	15.0429	6981.66	15.0430	6982.02	15.0432	6981.88
15.0433Temp	251.2	15.0435	6981.77	15.0436	6981.68	15.0438	6981.68	15.0439	6981.80
15.0440	6981.67	15.0441	6981.76	15.0443	6982.10	15.0444	6981.44	15.0445	6982.03
15.0446Temp	251.2	15.0448	6981.74	15.0449	6981.75	15.0450	6981.66	15.0452	6981.75
15.0453	6981.64	15.0454	6982.04	15.0456	6982.00	15.0457	6981.61	15.0458	6981.95
15.0455	6981.76	15.0500	6982.03	15.0503Temp	251.2	15.0504	6981.71	15.0505	6981.53
15.0506	6981.99	15.0507	6981.60	15.0508	6981.94	15.0510	6981.85	15.0511	6981.57
15.0512	6981.81	15.0514	6981.94	15.0515	6981.67	15.0516	6981.86	15.0518Temp	251.2
15.0519	6981.63	15.0520	6981.49	15.0521	6981.91	15.0523	6981.86	15.0524	6981.68
15.0525	6981.86	15.0526	6981.61	15.0528	6981.64	15.0529	6981.90	15.0530	6981.62

FILE

46

15.0535Temp	251.2	15.0537	6981.43	15.0538	6981.85	15.0539	6981.34	15.0541	6981.42
15.0542	6981.87	15.0543	6981.53	15.0544	6981.78	15.0546	6981.86	15.0547	6981.52
15.0548	6981.80	15.0550Temp	251.2	15.0551	6981.32	15.0552	6981.76	15.0553	6981.64
15.0555	6981.53	15.0556	6981.36	15.0557	6981.55	15.0559	6981.60	15.0600	6981.36
15.0602	6981.74	15.0603Temp	251.2	15.0605	6981.25	15.0606	6981.80	15.0608	6981.79
15.0609	6981.29	15.0610	6981.83	15.0611	6981.54	15.0613	6981.50	15.0614	6981.76
15.0615	6981.39	15.0616Temp	251.2	15.0618	6981.34	15.0619	6981.59	15.0620	6981.35
15.0622	6981.21	15.0623	6981.55	15.0624	6981.34	15.0626	6981.48	15.0627	6981.67
15.0628	6981.30	15.0629	6981.43	15.0630	6981.43	15.0633Temp	251.2	15.0634	6981.15
15.0635	6981.57	15.0636	6981.49	15.0637	6981.70	15.0638	6981.55	15.0640	6981.53

FILE
Schlumberger

47
15. 0643 6981.22 15. 0644 6981.62 15. 0645 6981.49 15. 0646 6981.65 15. 0648Temp 251.2
15. 0649 6981.20 15. 0649 6981.21 15. 0651 6981.37 15. 0654 6981.19
15. 0655 6981.35 15. 0656 6981.16 15. 0659 6981.55 15. 0700 6981.13
15. 0703Temp 251.2 15. 0704 6981.64 15. 0705 6981.26 15. 0707 6981.31 15. 0708 6981.04
15. 0709 6981.29 15. 0711 6981.34 15. 0712 6980.95 15. 0713 6981.61 15. 0714 6981.23
15. 0716 6981.07 15. 0718Temp 251.2 15. 0719 6981.18 15. 0720 6981.05 15. 0721 6981.49
15. 0722 6981.13 15. 0723 6981.53 15. 0725 6981.48 15. 0726 6981.17 15. 0727 6981.49
15. 0729 6981.51 15. 0730 6981.39 15. 0732 6981.13 15. 0733Temp 251.2 15. 0735 6981.12
15. 0736 6981.55 15. 0738 6981.57 15. 0739 6981.00 15. 0740 6981.39 15. 0741 6981.04
15. 0743 6981.26 15. 0744 6981.41 15. 0745 6981.13 15. 0746Temp 251.2 15. 0748 6981.32

FILE

48
15. 0751 6981.06 15. 0752 6981.47 15. 0753 6981.25 15. 0754 6981.07 15. 0756 6980.95
15. 0757 6981.27 15. 0758 6980.97 15. 0759 6981.22 15. 0800 6980.93 15. 0803Temp 251.2
15. 0804 6981.42 15. 0805 6981.12 15. 0806 6981.04 15. 0807 6981.10 15. 0808 6981.08
15. 0810 6981.00 15. 0811 6981.12 15. 0812 6980.95 15. 0814 6980.99 15. 0815 6981.32
15. 0816 6981.08 15. 0818Temp 251.2 15. 0819 6981.41 15. 0820 6981.18 15. 0821 6980.98
15. 0823 6980.96 15. 0824 6981.47 15. 0825 6980.90 15. 0826 6981.43 15. 0828 6981.34
15. 0829 6981.05 15. 0830 6981.37 15. 0833Temp 251.2 15. 0834 6981.23 15. 0835 6980.99
15. 0837 6980.96 15. 0838 6981.34 15. 0839 6981.03 15. 0841 6980.89 15. 0842 6981.44
15. 0843 6981.06 15. 0844 6981.46 15. 0846 6981.39 15. 0848Temp 251.2 15. 0849 6981.35
15. 0850 6981.19 15. 0851 6981.01 15. 0852 6981.10 15. 0853 6980.68 15. 0855 6980.96

FILE

49
15. 0858 6981.27 15. 0859 6981.17 15. 0900 6981.10 15. 0902 6981.32 15. 0903Temp 251.2
15. 0905 6981.04 15. 0906 6981.01 15. 0906 6980.94 15. 0909 6981.14 15. 0910 6980.97
15. 0918 6981.00 15. 0913 6981.05 15. 0914 6981.05 15. 0915 6981.35 15. 0916Temp 251.2
15. 0924 6980.85 15. 0919 6981.33 15. 0920 6980.91 15. 0922 6980.94 15. 0923 6981.33
15. 0930 6981.16 15. 0926 6981.14 15. 0927 6981.35 15. 0928 6981.12 15. 0929 6981.61
15. 0937 6980.90 15. 0933Temp 251.2 15. 0934 6980.99 15. 0935 6980.92 15. 0936 6981.44
15. 0944 6981.29 15. 0938 6981.33 15. 0940 6981.34 15. 0941 6980.75 15. 0942 6981.19
15. 0950 6981.10 15. 0945 6981.15 15. 0946 6981.34 15. 0948Temp 251.2 15. 0949 6981.27
15. 0956 6981.21 15. 0951 6981.06 15. 0953 6980.83 15. 0954 6980.93 15. 0955 6980.80
15. 1003Temp 251.2 15. 0958 6981.22 15. 0959 6980.90 15. 1000 6981.39

FILE

50
15. 1007 6980.89 15. 1008 6981.31 15. 1009 6981.04 15. 1011 6980.85 15. 1012 6981.39
15. 1013 6981.01 15. 1014 6981.28 15. 1016 6981.30 15. 1018Temp 251.2 15. 1019 6980.98
15. 1020 6981.26 15. 1021 6981.08 15. 1022 6981.29 15. 1023 6981.13 15. 1025 6981.07
15. 1026 6980.81 15. 1027 6981.08 15. 1029 6980.95 15. 1030 6980.95 15. 1032 6981.21
15. 1033Temp 251.2 15. 1035 6981.15 15. 1036 6980.81 15. 1038 6980.80 15. 1039 6980.92
15. 1040 6980.93 15. 1041 6981.11 15. 1043 6981.31 15. 1044 6980.91 15. 1045 6981.23
15. 1046Temp 251.2 15. 1048 6981.04 15. 1049 6980.91 15. 1050 6981.05 15. 1052 6981.04
15. 1053 6980.90 15. 1054 6981.24 15. 1056 6981.24 15. 1057 6980.93 15. 1058 6981.26
15. 1059 6980.96 15. 1100 6981.32 15. 1103Temp 251.2 15. 1104 6980.82 15. 1105 6981.28
15. 1106 6981.10 15. 1107 6981.28 15. 1108 6981.06 15. 1110 6980.99 15. 1111 6981.17

FILE

51
15. 1115 6980.88 15. 1116 6981.22 15. 1116Temp 251.2 15. 1119 6980.99 15. 1120 6981.26
15. 1121 6981.08 15. 1123 6980.93 15. 1124 6980.87 15. 1125 6981.07 15. 1126 6980.81
15. 1128 6980.88 15. 1129 6980.93 15. 1130 6960.77 15. 1133Temp 251.2 15. 1134 6981.24
15. 1135 6981.00 15. 1137 6980.92 15. 1138 6980.85 15. 1139 6981.01 15. 1141 6981.17
15. 1142 6980.83 15. 1143 6981.29 15. 1144 6980.80 15. 1146 6980.89 15. 1148Temp 251.2
15. 1149 6981.05 15. 1150 6980.93 15. 1151 6981.14 15. 1152 6980.83 15. 1153 6981.22
15. 1155 6981.31 15. 1156 6981.05 15. 1157 6981.19 15. 1159 6981.26 15. 1200 6980.97
15. 1202 6980.88 15. 1203Temp 251.2 15. 1205 6981.06 15. 1208 6980.80
15. 1209 6981.05 15. 1210 6980.87 15. 1211 6981.44 15. 1216 6981.24 15. 1218 6980.81
15. 1215 6981.43 15. 1216Temp 251.2 15. 1217 6980.82 15. 1219 6981.23 15. 1220 6980.94

52

15.1223	6981.40	15.1224	6981.01	15.1226	6981.23	15.1227	6980.87	15.1228	6981.21
15.1229	6980.89	15.1230	6981.33	15.1233Temp	251.2	15.1234	6981.02	15.1235	6980.88
15.1236	6981.21	15.1237	6980.95	15.1238	6981.22	15.1240	6981.33	15.1241	6980.93
15.1242	6981.30	15.1244	6981.40	15.1245	6980.98	15.1246	6981.30	15.1248Temp	251.2
15.1249	6980.81	15.1250	6981.28	15.1251	6981.03	15.1253	6981.06	15.1254	6980.82
15.1255	6981.02	15.1256	6980.84	15.1258	6980.78	15.1259	6981.00	15.1300	6980.93
15.1303Temp	251.2	15.1304	6981.31	15.1305	6981.08	15.1307	6980.96	15.1308	6980.80
15.1309	6981.02	15.1311	6980.93	15.1312	6980.91	15.1313	6981.23	15.1314	6980.83
15.1316	6980.75	15.1318Temp	251.2	15.1319	6980.92	15.1320	6980.93	15.1321	6981.17
15.1322	6980.85	15.1323	6981.11	15.1325	6981.16	15.1326	6980.99	15.1327	6981.16

FILE

53

15.1330	6980.93	15.1332	6980.84	15.1334Temp	251.2	15.1336	6980.94	15.1338	6981.07
15.1339	6981.15	15.1340	6980.89	15.1341	6981.16	15.1343	6980.76	15.1344	6980.84
15.1345	6980.89	15.1347	6980.73	15.1349Temp	251.2	15.1350	6980.80	15.1352	6980.70
15.1353	6981.16	15.1354	6981.06	15.1356	6981.04	15.1357	6981.22	15.1358	6981.04
15.1359	6981.38	15.1400	6980.92	15.1402	6980.85	15.1403Temp	251.2	15.1405	6980.77
15.1406	6981.23	15.1407	6980.77	15.1408	6981.26	15.1410	6981.28	15.1411	6980.89
15.1412	6981.16	15.1414	6981.21	15.1415	6981.00	15.1416	6981.13	15.1418Temp	251.2
15.1419	6981.02	15.1420	6980.69	15.1421	6981.07	15.1423	6981.24	15.1424	6980.84
15.1425	6981.22	15.1426	6981.05	15.1428	6981.00	15.1429	6981.08	15.1430	6980.88
15.1433Temp	251.2	15.1434	6981.29	15.1435	6980.87	15.1437	6980.84	15.1438	6980.70

FILE

54

15.1441	6981.22	15.1442	6980.93	15.1443	6980.65	15.1444	6980.88	15.1446	6980.90
15.1448Temp	251.2	15.1449	6980.70	15.1450	6981.12	15.1451	6980.93	15.1452	6981.13
15.1453	6980.87	15.1455	6980.89	15.1456	6980.80	15.1457	6980.88	15.1459	6980.86
15.1500	6980.86	15.1502	6981.13	15.1503Temp	251.2	15.1505	6980.87	15.1506	6980.63
15.1508	6980.66	15.1509	6980.77	15.1510	6980.74	15.1511	6980.98	15.1513	6981.11
15.1514	6980.79	15.1515	6981.14	15.1516Temp	251.2	15.1518	6981.13	15.1519	6980.88
15.1520	6981.08	15.1522	6981.13	15.1523	6980.97	15.1524	6980.78	15.1526	6980.80
15.1527	6980.71	15.1528	6980.60	15.1529	6980.83	15.1530	6980.67	15.1533Temp	251.2
15.1534	6980.60	15.1535	6981.01	15.1536	6980.83	15.1537	6981.13	15.1538	6980.88
15.1540	6980.79	15.1541	6981.04	15.1542	6980.80	15.1544	6980.82	15.1545	6980.58

FILE

55

15.1548	6981.14	15.1550Temp	251.2	15.1551	6981.09	15.1553	6980.63	15.1554	6981.20
15.1555	6980.56	15.1556	6981.03	15.1558	6981.04	15.1559	6980.66	15.1600	6981.05
15.1602	6980.73	15.1603	6980.96	15.1609Temp	251.2	15.1606	6980.73	15.1607	6980.56
15.1608	6981.09	15.1609	6980.59	15.1611	6980.55	15.1612	6980.88	15.1613	6980.66
15.1614	6980.97	15.1616	6980.98	15.1617	6980.72	15.1618	6980.99	15.1620Temp	251.2
15.1621	6980.92	15.1622	6980.80	15.1623	6980.60	15.1625	6980.56	15.1626	6980.88
15.1627	6980.64	15.1629	6980.53	15.1630	6981.06	15.1632	6980.66	15.1633Temp	251.2
15.1635	6980.78	15.1636	6980.59	15.1638	6980.59	15.1639	6980.73	15.1640	6980.50
15.1641	6980.68	15.1643	6980.61	15.1644	6980.49	15.1645	6980.98	15.1646Temp	251.2
15.1648	6980.68	15.1649	6980.45	15.1650	6980.76	15.1652	6980.76	15.1653	6980.48

FILE

56

15.1656	6980.55	15.1657	6980.66	15.1658	6980.45	15.1659	6980.80	15.1700	6980.51
15.1703Temp	251.2	15.1704	6980.63	15.1705	6980.50	15.1706	6980.96	15.1707	6980.57
15.1708	6980.91	15.1710	6980.99	15.1711	6980.53	15.1712	6981.00	15.1714	6981.02
15.1715	6980.76	15.1716	6980.88	15.1718Temp	251.2	15.1719	6980.49	15.1720	6981.00
15.1721	6980.75	15.1723	6980.62	15.1724	6980.52	15.1725	6980.59	15.1726	6980.58
15.1728	6980.41	15.1729	6980.62	15.1730	6980.54	15.1733Temp	251.2	15.1734	6980.92
15.1735	6980.59	15.1737	6980.58	15.1738	6980.42	15.1739	6980.68	15.1741	6980.59
15.1742	6980.37	15.1743	6980.78	15.1744	6980.43	15.1746	6980.41	15.1748Temp	251.2
15.1749	6980.86	15.1750	6980.55	15.1751	6980.50	15.1752	6980.58	15.1753	6980.57
15.1755	6980.53	15.1756	6980.90	15.1757	6980.43	15.1834	6977.42	15.1837Temp	251.2

57
 15.1855 6975.96 15.1900 6975.94 15.1911 6975.00 15.1921 6974.68 15.1931 6974.87
 15.1941 6974.41 15.1952 6974.20 15.2000 6973.96 15.2010 6973.56 15.2020 6973.57
 15.2030 6972.89 15.2041 6972.96 15.2051 6972.34 15.2100 6972.63 15.2110 6972.23
 15.2120 6972.33 15.2131 6971.86 15.2141 6972.02 15.2151 6971.46 15.2200 6971.71
 15.2211 6971.12 15.2221 6971.01 15.2231 6970.95 15.2241 6971.26 15.2252 6970.72
 15.2300 6970.94 15.2310 6970.44 15.2320 6970.27 15.2330 6970.47 15.2339Temp 251.2
 15.2341 6970.12 15.2351 6970.33 15.2400 6970.01 15.2410 6969.78 15.2420 6969.73
 15.2431 6969.47 15.2441 6969.67 15.2451 6969.85 15.2500 6969.07 15.2511 6969.07
 15.2521 6968.59 15.2531 6968.01 15.2541 6967.94 15.2552 6967.57 15.2600 6967.53
 15.2610 6967.03 15.2620 6967.03 15.2630 6966.87 15.2641 6966.62 15.2651 6966.57

58
 15.2700 6966.58 15.2710 6966.14 15.2720 6966.14 15.2731 6965.86 15.2741 6965.94
 15.2751 6965.72 15.2800 6965.34 15.2811 6965.22 15.2821 6964.75 15.2831 6964.87
 15.2841Temp 251.2 15.2842 6964.62 15.2852 6964.58 15.2900 6964.85 15.2910 6964.45
 15.2920 6964.55 15.2930 6964.07 15.2941 6964.29 15.2951 6963.85 15.3000 6964.12
 15.3010 6963.87 15.3020 6964.22 15.3031 6963.80 15.3041 6963.73 15.3051 6963.40
 15.3100 6963.72 15.3111 6963.24 15.3121 6963.34 15.3131 6963.41 15.3141 6963.49
 15.3152 6963.30 15.3200 6963.46 15.3210 6963.16 15.3220 6963.70 15.3230 6962.49
 15.3241 6962.32 15.3251 6962.27 15.3300 6961.99 15.3310 6961.82 15.3320 6961.73
 15.3331 6961.42 15.3341 6961.27 15.3342Temp 251.2 15.3351 6961.00 15.3400 6961.07
 15.3411 6960.69 15.3421 6960.74 15.3431 6960.37 15.3441 6960.61 15.3452 6960.36

59
 15.3500 6960.02 15.3510 6960.20 15.3520 6959.68 15.3530 6959.71 15.3541 6959.35
 15.3551 6959.53 15.3600 6959.13 15.3610 6959.44 15.3620 6958.91 15.3631 6959.14
 15.3641 6958.63 15.3651 6958.67 15.3700 6958.19 15.3711 6958.48 15.3721 6958.23
 15.3731 6958.25 15.3741 6957.93 15.3752 6958.21 15.3800 6957.89 15.3810 6958.04
 15.3820 6957.46 15.3830 6957.60 15.3841 6957.22 15.3843Temp 251.2 15.3851 6957.33 15.3900 6956.75
 15.3900 6957.20 15.3910 6956.93 15.3920 6956.76 15.3931 6956.59 15.3941 6956.75
 15.3951 6956.67 15.4000 6956.38 15.4011 6956.50 15.4021 6956.63 15.4031 6956.20
 15.4041 6956.14 15.4052 6955.83 15.4100 6955.58 15.4110 6955.64 15.4120 6955.26
 15.4130 6955.74 15.4141 6955.53 15.4151 6955.73 15.4200 6955.39 15.4210 6955.26
 15.4220 6955.21 15.4231 6955.04 15.4241 6955.18 15.4251 6955.23 15.4300 6954.94

60
 15.4311 6954.16 15.4321 6954.73 15.4331 6954.82 15.4341 6954.61 15.4345Temp 251.2
 15.4352 6954.54 15.4400 6954.66 15.4410 6954.25 15.4420 6954.42 15.4430 6954.74
 15.4441 6954.28 15.4451 6954.60 15.4500 6954.23 15.4510 6954.16 15.4520 6954.14
 15.4531 6954.01 15.4541 6954.05 15.4551 6954.30 15.4600 6954.22 15.4611 6954.05
 15.4621 6953.85 15.4631 6953.27 15.4641 6953.32 15.4652 6952.82 15.4700 6952.93
 15.4710 6952.39 15.4720 6952.33 15.4730 6952.44 15.4741 6951.75 15.4751 6951.77
 15.4800 6951.59 15.4810 6951.00 15.4820 6951.05 15.4831 6950.68 15.4841 6950.54
 15.4847Temp 251.2 15.4851 6950.40 15.4900 6950.23 15.4911 6949.91 15.4921 6949.45
 15.4931 6949.21 15.4941 6948.98 15.4952 6948.47 15.5000 6948.47 15.5010 6948.13
 15.5020 6947.65 15.5030 6947.84 15.5041 6947.11 15.5051 6946.87 15.5100 6946.42

61
 15.5110 6946.21 15.5120 6946.23 15.5131 6945.75 15.5141 6945.59 15.5151 6945.44
 15.5200 6945.24 15.5211 6944.95 15.5221 6944.49 15.5231 6944.74 15.5241 6944.31
 15.5252 6943.83 15.5300 6944.04 15.5310 6943.82 15.5320 6943.31 15.5330 6943.02
 15.5341 6943.05 15.5349Temp 251.2 15.5351 6942.64 15.5400 6942.47 15.5410 6942.78
 15.5420 6942.25 15.5431 6942.27 15.5441 6942.04 15.5451 6941.75 15.5500 6941.51
 15.5511 6941.49 15.5521 6941.05 15.5531 6940.71 15.5541 6940.69 15.5552 6940.80
 15.5600 6940.43 15.5610 6940.18 15.5620 6940.03 15.5630 6939.89 15.5641 6939.81
 15.5651 6939.68 15.5700 6939.45 15.5710 6939.15 15.5720 6939.13 15.5731 6939.18
 15.5741 6938.76 15.5751 6938.81 15.5800 6938.44 15.5811 6938.52 15.5821 6937.94
 15.5831 6937.94 15.5841 6938.03 15.5851 6937.50 15.5900 6937.40

6912.30	6911.95	16.3951	6911.96	16.4000	6911.86	16.4011	6911.84
6911.67	6911.69	16.4041	6911.49	16.4052	6911.43	16.4100	6911.26
6911.34	6911.04	16.4120	6911.02	16.4151	6911.04	16.4151	6910.90
6910.83	6910.78	16.4230	6910.59	16.4231	6910.40	16.4241	6910.53
6910.33	6910.24	16.4311	6910.19	16.4321	6910.05	16.4331	6909.97
6909.94	6909.83	16.4400	6909.68	16.4411Temp 251.4	6909.27	16.4412	6909.63
6909.32	6909.28	16.4443	6909.29	16.4451	6909.27	16.4500	6909.14
6908.96	6909.01	16.4520	6908.78	16.4531	6908.65	16.4551	6908.70
6908.67	6908.57	16.4621	6908.38	16.4631	6908.27	16.4641	6908.20
6908.01	6908.07	16.4710	6907.86	16.4720	6907.81	16.4730	6907.83

FILE 68

6907.56	6907.51	16.4751	6907.50	16.4810	6907.26	16.4820	6907.39
6907.28	6907.20	16.4841	6907.00	16.4900	6907.04	16.4911	6906.92
Temp 251.14	6906.80	16.4921	6906.82	16.4941	6906.67	16.4952	6906.50
6906.59	6906.47	16.5010	6906.42	16.5030	6906.32	16.5041	6906.25
6906.10	6905.93	16.5110	6905.82	16.5120	6905.91	16.5131	6905.70
6905.72	6905.62	16.5151	6905.62	16.5211	6905.57	16.5221	6905.39
6905.37	6905.15	16.5241	6905.15	16.5300	6905.10	16.5310	6904.87
6904.84	6904.84	16.5330	6904.73	16.5351	6904.66	16.5400	6904.58
6904.52	Temp 251.4	16.5415Temp 251.4	6904.46	16.5431	6904.35	16.5441	6904.36
6904.10	6904.14	16.5500	6904.09	16.5521	6903.96	16.5531	6903.86

FILE 69

6903.65	6903.51	16.5552	6903.66	16.5610	6903.46	16.5620	6903.50
6903.33	6903.34	16.5641	6903.20	16.5700	6903.22	16.5710	6903.13
6902.89	6902.86	16.5731	6902.72	16.5751	6902.69	16.5800	6902.64
6902.49	6902.48	16.5821	6902.46	16.5841	6902.40	16.5852	6902.14
6902.27	6902.06	16.5910	6902.15	16.5920	6902.15	16.5930	6902.06
6901.92	6901.78	16.5951	6901.81	17.0010	6901.67	17.0020	6901.55
6901.37	6901.44	17.0041	6901.33	17.0100	6901.27	17.0111	6901.24
6901.13	6901.00	17.0131	6901.17	17.0152	6900.87	17.0200	6901.01
6900.85	6900.68	17.0220	6900.59	17.0241	6900.61	17.0251	6900.55
6900.50	6900.34	17.0310	6900.16	17.0331	6900.21	17.0341	6900.07

FILE 70

6900.90	6899.89	17.0460	6899.96	17.0415Temp 251.6	6899.85	17.0421	6899.85
6899.79	6899.55	17.0441	6899.59	17.0500	6899.42	17.0510	6899.42
6899.31	6899.43	17.0530	6899.26	17.0551	6899.13	17.0600	6899.09
6899.06	6899.09	17.0620	6899.86	17.0641	6898.70	17.0651	6898.70
6898.61	6898.76	17.0711	6898.63	17.0731	6898.46	17.0741	6898.42
6898.26	6898.35	17.0800	6898.07	17.0820	6898.03	17.0830	6898.02
6897.94	6897.82	17.0851	6897.90	17.0910	6897.88	17.0920Temp 251.6	6897.6
6897.68	6897.71	17.0932	6897.59	17.0953	6897.44	17.1000	6897.45
6897.36	6897.29	17.1021	6897.04	17.1041	6897.09	17.1052	6897.12
6896.58	6896.89	17.1110	6896.85	17.1130	6896.75	17.1141	6896.64

FILE 71

6896.55	6896.60	17.1200	6896.47	17.1220	6896.40	17.1231	6896.32
6896.27	6896.28	17.1251	6896.23	17.1311	6896.14	17.1321	6896.01
6895.93	6895.90	17.1341	6895.76	17.1400	6895.75	17.1410	6895.73
6895.70	Temp 251.6	17.1422Temp 251.6	6895.61	17.1441	6895.43	17.1451	6895.38
6895.39	6895.21	17.1510	6895.38	17.1531	6895.24	17.1541	6895.09
6895.11	6894.96	17.1600	6894.90	17.1621	6894.92	17.1631	6894.73
6894.65	6894.63	17.1652	6894.69	17.1710	6894.56	17.1720	6894.53
6894.41	6894.24	17.1741	6894.26	17.1800	6894.22	17.1810	6894.22
6894.02	6893.88	17.1831	6893.92	17.1851	6893.87	17.1900	6893.86
6893.70	6893.64	17.1921	6893.64	17.1931Temp 251.6	6893.63	17.1941	6893.51

17.1952	6893.57	17.2000	6893.43	17.2010	6893.39	17.2020	6893.35	17.2030	6893.16
17.2041	6893.01	17.2051	6893.12	17.2100	6893.11	17.2110	6892.96	17.2120	6893.05
17.2131	6892.84	17.2141	6892.67	17.2151	6892.67	17.2200	6892.65	17.2211	6892.88
17.2221	6892.45	17.2231	6892.69	17.2241	6892.25	17.2252	6892.02	17.2300	6892.07
17.2310	6892.30	17.2320	6892.17	17.2330	6892.03	17.2341	6892.10	17.2351	6891.77
17.2400	6891.84	17.2410	6891.06	17.2420	6891.65	17.2425Temp	251.6	17.2431	6891.86
17.2441	6891.66	17.2451	6891.72	17.2500	6891.67	17.2511	6891.59	17.2521	6891.42
17.2531	6891.47	17.2541	6891.23	17.2552	6891.30	17.2600	6891.19	17.2610	6891.17
17.2620	6890.97	17.2630	6890.99	17.2641	6890.79	17.2651	6890.85	17.2700	6890.93
17.2710	6890.57	17.2720	6890.49	17.2731	6890.67	17.2741	6890.19	17.2751	6890.35

17.2800	6890.65	17.2811	6890.42	17.2821	6890.46	17.2831	6890.39	17.2841	6890.15
17.2852	6890.10	17.2900	6889.56	17.2910	6889.93	17.2920	6890.12	17.2926Temp	251.6
17.2930	6890.04	17.2941	6889.53	17.2951	6889.74	17.3000	6889.62	17.3010	6889.82
17.3020	6889.71	17.3031	6889.35	17.3041	6889.30	17.3051	6889.34	17.3100	6889.55
17.3111	6889.20	17.3121	6889.21	17.3131	6888.78	17.3141	6889.05	17.3152	6889.21
17.3200	6888.87	17.3210	6889.02	17.3220	6888.65	17.3230	6888.77	17.3241	6888.73
17.3251	6888.71	17.3300	6888.77	17.3310	6888.63	17.3320	6888.40	17.3331	6888.38
17.3341	6888.27	17.3351	6888.46	17.3400	6888.10	17.3411	6888.02	17.3421	6888.17
17.3428Temp	251.6	17.3431	6887.83	17.3441	6888.06	17.3452	6887.65	17.3500	6887.91
17.3510	6887.78	17.3520	6887.75	17.3530	6887.74	17.3541	6887.57	17.3551	6887.72

17.3600	6887.55	17.3610	6887.25	17.3620	6887.26	17.3631	6887.11	17.3641	6887.35
17.3651	6887.62	17.3700	6887.13	17.3711	6887.37	17.3721	6887.09	17.3731	6887.14
17.3741	6886.82	17.3752	6886.83	17.3800	6886.69	17.3810	6886.81	17.3820	6886.52
17.3830	6886.84	17.3841	6886.41	17.3851	6886.71	17.3900	6886.30	17.3910	6886.61
17.3920	6886.27	17.3930Temp	251.6	17.3931	6886.37	17.3941	6886.43	17.3951	6886.11
17.4000	6885.94	17.4011	6886.03	17.4021	6886.12	17.4031	6885.95	17.4041	6885.59
17.4052	6886.66	17.4100	6886.03	17.4110	6885.73	17.4120	6885.75	17.4130	6885.66
17.4141	6885.34	17.4151	6885.25	17.4200	6885.34	17.4210	6885.20	17.4220	6885.61
17.4231	6885.24	17.4241	6885.01	17.4251	6885.30	17.4300	6885.26	17.4311	6885.13
17.4321	6885.06	17.4331	6885.02	17.4341	6884.68	17.4352	6884.93	17.4400	6884.61

17.4410	6884.69	17.4420	6884.67	17.4430	6884.79	17.4432Temp	251.8	17.4441	6884.54
17.4451	6884.72	17.4500	6884.43	17.4510	6884.65	17.4520	6884.41	17.4531	6884.37
17.4541	6884.60	17.4551	6884.33	17.4600	6884.17	17.4611	6884.13	17.4621	6884.07
17.4631	6884.08	17.4641	6883.92	17.4652	6884.00	17.4700	6883.79	17.4710	6883.90
17.4720	6883.70	17.4730	6883.62	17.4741	6883.71	17.4751	6883.41	17.4800	6883.43
17.4810	6883.52	17.4820	6883.40	17.4831	6883.18	17.4841	6883.24	17.4851	6883.12
17.4900	6883.03	17.4911	6883.02	17.4921	6883.08	17.4931	6882.86	17.4934Temp	251.8
17.4941	6882.83	17.4952	6883.00	17.5000	6882.74	17.5010	6882.88	17.5020	6882.96
17.5030	6882.83	17.5041	6882.77	17.5051	6882.69	17.5100	6882.39	17.5110	6882.42
17.5120	6882.40	17.5131	6882.34	17.5141	6882.45	17.5151	6882.41	17.5200	6882.26

17.5211	6882.30	17.5221	6882.05	17.5231	6882.13	17.5241	6881.78	17.5252	6881.90
17.5300	6881.71	17.5310	6881.81	17.5320	6881.62	17.5330	6881.70	17.5341	6881.61
17.5351	6882.03	17.5400	6881.47	17.5410	6881.21	17.5420	6881.22	17.5431	6881.63
17.5436Temp	251.8	17.5441	6881.54	17.5451	6881.11	17.5500	6881.35	17.5511	6881.19
17.5521	6881.13	17.5531	6881.04	17.5541	6881.12	17.5552	6881.11	17.5600	6880.82
17.5610	6880.91	17.5620	6880.95	17.5630	6880.91	17.5641	6880.64	17.5651	6880.77
17.5700	6880.56	17.5710	6880.50	17.5720	6880.56	17.5731	6880.46	17.5741	6880.40
17.5751	6880.40	17.5800	6880.45	17.5811	6880.21	17.5821	6880.07	17.5831	6880.20
17.5841	6880.12	17.5852	6880.18	17.5900	6880.12	17.5910	6880.09	17.5920	6679.88
17.5930	6679.86	17.5936Temp	251.8	17.5941	6679.83	17.5951	6679.84	18.0000	6681.69

77

18.0010	6879.73	18.0020	6879.75	18.0031	6679.56	18.0041	6879.54	18.0051	6879.52
18.0100	6879.36	18.0111	6879.45	18.0121	6879.17	18.0131	6879.36	18.0141	6879.27
18.0152	6879.22	18.0200	6879.09	18.0210	6879.14	18.0220	6879.02	18.0230	6878.94
18.0241	6878.93	18.0251	6878.86	18.0300	6878.76	18.0310	6878.82	18.0320	6878.82
18.0331	6878.70	18.0341	6878.61	18.0351	6878.55	18.0400	6878.53	18.0411	6878.59
18.0421	6878.47	18.0431	6878.35	18.0439Temp	251.8	18.0441	6878.35	18.0452	6878.31
18.0500	6878.30	18.0510	6878.09	18.0520	6878.15	18.0530	6878.01	18.0541	6878.02
18.0551	6877.97	18.0600	6877.93	18.0610	6877.95	18.0620	6877.85	18.0631	6877.81
18.0641	6877.76	18.0651	6877.80	18.0700	6877.73	18.0711	6877.65	18.0721	6877.69
18.0731	6877.43	18.0741	6877.41	18.0752	6877.46	18.0800	6877.39	18.0810	6877.41

FILE

78

18.0820	6877.31	18.0830	6877.27	18.0841	6877.10	18.0851	6877.09	18.0900	6877.12
18.0910	6876.58	18.0939	6876.86	18.0949	6876.97	18.1005	6876.64	18.1026	6876.60
18.1047	6876.65	18.1100	6876.48	18.1120	6876.44	18.1141	6876.30	18.1200	6876.21
18.1220	6876.07	18.1241	6876.11	18.1300	6875.81	18.1321	6875.84	18.1341	6875.70
18.1400	6875.76	18.1420	6875.63	18.1439Temp	251.8	18.1441	6875.49	18.1500	6875.34
18.1520	6875.27	18.1541	6875.18	18.1600	6875.02	18.1621	6874.93	18.1641	6874.82
18.1700	6874.95	18.1720	6874.69	18.1741	6874.66	18.1800	6874.56	18.1820	6874.47
18.1841	6874.28	18.1900	6874.22	18.1921	6874.10	18.1941	6873.98	18.2000	6874.00
18.2020	6873.94	18.2041	6873.84	18.2100	6873.69	18.2120	6873.60	18.2141	6873.63
18.2200	6873.46	18.2221	6873.36	18.2241	6873.10	18.2300	6873.19	18.2320	6873.17

FILE

79

18.2341	6873.02	18.2400	6872.84	18.2420	6872.71	18.2438Temp	252.0	18.2441	6872.72
18.2500	6872.71	18.2521	6872.54	18.2541	6872.39	18.2600	6872.47	18.2620	6872.12
18.2641	6872.23	18.2700	6871.84	18.2720	6872.18	18.2741	6871.88	18.2800	6871.91
18.2821	6871.92	18.2841	6871.69	18.2900	6871.56	18.2920	6871.35	18.2941	6871.50
18.3000	6871.44	18.3020	6871.17	18.3041	6870.88	18.3100	6871.09	18.3121	6871.00
18.3141	6870.63	18.3200	6870.65	18.3220	6870.79	18.3241	6870.62	18.3300	6870.17
18.3320	6870.34	18.3341	6870.25	18.3400	6870.47	18.3421	6869.96	18.3437Temp	252.0
18.3441	6870.02	18.3500	6869.98	18.3520	6869.82	18.3541	6869.93	18.3600	6870.00
18.3620	6869.46	18.3641	6869.40	18.3700	6869.58	18.3721	6869.44	18.3741	6869.22
18.3800	6869.16	18.3820	6869.14	18.3841	6869.16	18.3900	6869.09	18.3920	6868.88

FILE

80

18.3941	6868.59	18.4000	6868.70	18.4021	6868.88	18.4041	6868.57	18.4100	6868.25
18.4120	6868.58	18.4141	6868.14	18.4200	6868.32	18.4220	6868.21	18.4241	6867.97
18.4300	6867.97	18.4321	6867.98	18.4341	6867.94	18.4400	6867.98	18.4420	6867.76
18.4437Temp	252.0	18.4441	6867.35	18.4500	6867.44	18.4520	6867.23	18.4541	6867.38
18.4600	6867.24	18.4621	6867.27	18.4641	6867.11	18.4700	6866.72	18.4720	6866.95
18.4741	6866.72	18.4800	6866.87	18.4820	6866.63	18.4841	6866.55	18.4900	6866.67
18.4921	6866.45	18.4941	6866.45	18.5000	6866.36	18.5020	6866.11	18.5041	6866.21
18.5100	6866.19	18.5120	6865.90	18.5141	6866.06	18.5200	6865.68	18.5221	6865.69
18.5241	6865.69	18.5300	6865.50	18.5320	6865.37	18.5341	6865.36	18.5400	6865.35
18.5420	6865.03	18.5437Temp	252.0	18.5441	6865.46	18.5500	6865.06	18.5521	6864.90

FILE

81

18.5541	6864.85	18.5600	6864.96	18.5620	6864.75	18.5641	6864.40	18.5700	6864.21
18.5720	6864.63	18.5741	6864.31	18.5800	6864.35	18.5821	6864.32	18.5841	6864.17
18.5900	6864.00	18.5920	6864.02	18.5941	6863.59	19.0000	6863.98	19.0020	6863.84
19.0041	6863.82	19.0100	6863.73	19.0121	6863.76	19.0141	6863.67	19.0200	6863.39
19.0220	6863.23	19.0241	6863.60	19.0300	6863.51	19.0320	6863.11	19.0341	6863.07
19.0400	6863.05	19.0421	6863.14	19.0437Temp	252.0	19.0441	6862.79	19.0500	6862.68
19.0520	6862.69	19.0541	6862.51	19.0600	6862.45	19.0620	6862.71	19.0641	6862.35
19.0700	6862.35	19.0721	6862.17	19.0741	6862.24	19.0800	6862.36	19.0820	6862.02
19.0841	6861.88	19.0900	6862.10	19.0920	6861.89	19.0941	6861.67	19.1000	6861.47
19.1021	6861.59	19.1041	6861.37	19.1100	6861.34	19.1120	6861.41	19.1141	6861.17

