



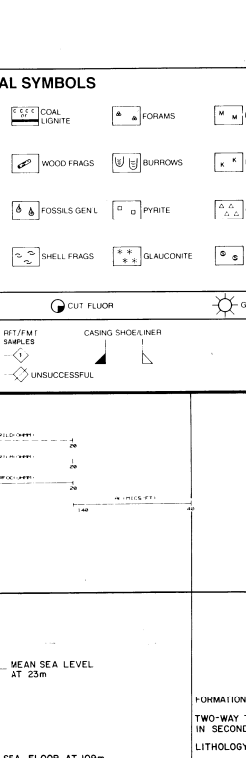
CONOCO/N.HYDRO/AMERADA

6/3-1 PI

REGISTRERT
OILREDBROTART

COMPLETION LOG
Scale 1:500

AREA: NORTH SEA
COORDINATES: 57°58' 0.20" N
01°55' 30.38" E



K.B.: 23
WATER DEPTH: 86m
TOTAL DEPTH: 3560m

DEUPEST FORM. PEN.: SKAGERRAK FM
RIG RELEASE DATE: 10 FEBRUARY 1985
WELL STATUS: OIL/GAS DISCOVERY, P&A

CONTRACTOR: ODFJELL DRILLING & CONS. CO.
GEOLOGISTS: A.G. OPSTAD, P.C. LINT, J.M. ØSTBY
PREPARED BY: M. ASLÅSSEN DATE: 22/4-85

CAUSING DATA: LEAK OFF TESTS: VELOCITY SURVEY

30' to 170m
50' to 300m
133' to 1600m
3' to 3099m

CONTRATOR SEISMOGRAPH SERVICE LTD
92 LEVELS FROM 830-3560m
GEOPHONE / GUN 5m OFFSET

Table with columns: HELL, HELL, HELL, HELL, HELL, HELL, HELL, HELL. Contains well log data points.

COMMENTS:
FOR RFT AND TEST RESULTS, SEE COMPLETION REPORT.
LOCATION AND TESTING LINE NO. 511-115

SHOTPOINT NO. 160
COREGUN RECOVERY:
RUN 3A: REC. 24 OF 50
" 6B: REC. 41 OF 50

LITHOLOGICAL SYMBOLS
Includes symbols for sandstone, shale, limestone, etc.

SYSTEM: DRONOSTRATIGRAFI
AREAL: LITHOSTRATIGRAFI
GROUP: NORDLAND

FORMATION ENHANCEMENT
FORMATION TIPS
TWO-WAY TRAVEL TIME IN SECONDS
LITHOLOGY DESCR.

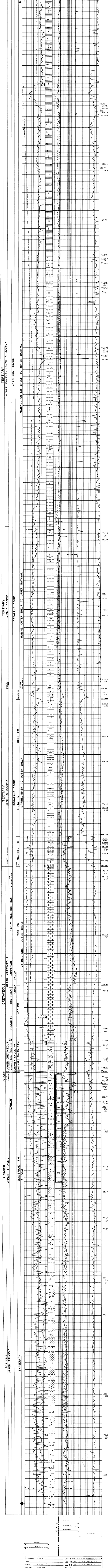


Table with columns: Well, Date, Quality, State. Includes well name 6/3-1 and date 22/4-85.