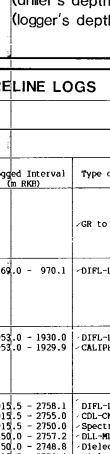


COMPLETION LOG

ESSO / STATOIL / NORSK HYDRO / ELF
DEMINEX / DNO



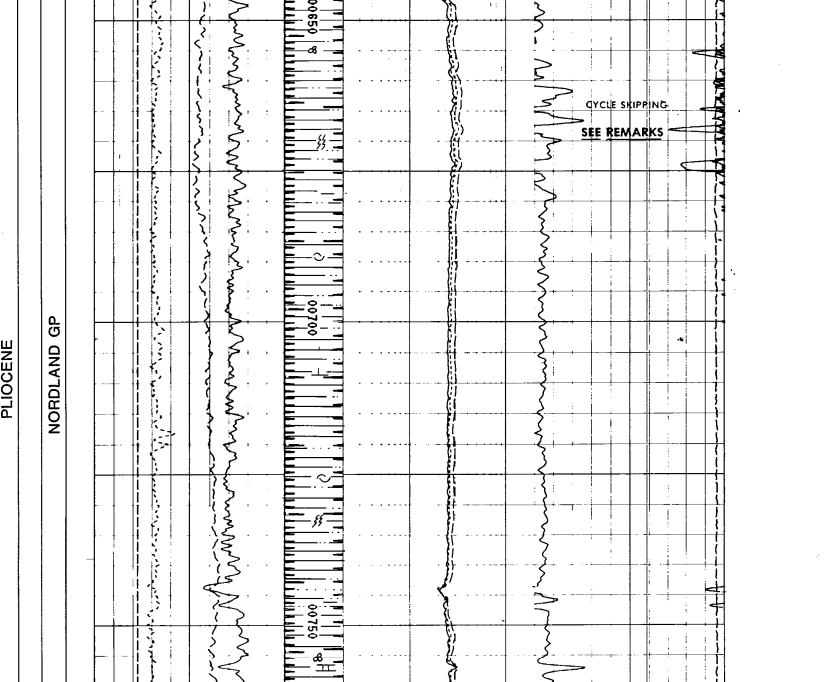
Saga Petroleum a.s.

Composite Well Log
Well 34/7-4

SCALE: 1:500	COUNTRY: NORWAY	OFF LOCATION: JAN 16th 1985	ELEVATIONS:
AREA: TAMPEN SPUR	COMPLETION STATUS: P & A OIL WELL	RKB-MEAN SEA LEVEL: 26m	
OPERATOR: SAGA PETROLEUM RIG	LOCATION: TREASURE SAGA	WKB-MEAN SEA FLOOR: 345m	
LICENCE: 089	COORDINATES:	WATER DEPTH: 1319m	
RIG TAKEN OVER BY THE LICENCE: NOV. 19th, 1984	LATITUDE: 61°29' 04.44" N	TOTAL DEPTH: 3159m	
DATE SPOKEN: NOV. 19th, 1984	LONGITUDE: 02°08' 00.26" E	(Koojer's depth): 3118.6m	
T.B. DATE: JAN. 1st, 1985			

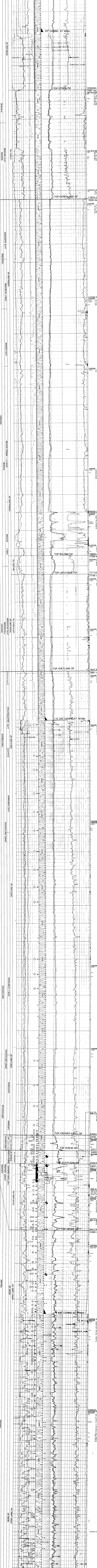
DRILLING CONTRACTOR	MUDLOGGING SERVICE	WIRELINE LOGS
WILH. WILHELMSEN	EXPLOJATING LOGGING	

CASING	SHOE (m/ft)	HOLE SIZE	INTERVAL (m/ft)
30"	469	36"	345-473
20"	959	24"	473-971
13 3/8"	1915	17 1/2"	971-1930
9 5/8"	2745	12 1/4"	1930-2757
		8 1/2"	2757-3115



AUTHOR: B. KARLSTAD APPR: B. GUSTAVSEN DRAFTED BY: G. FRAMGARDEN DATE: MAY 1985

LOG SCALES	LITH	LOG SCALES	DESCRIPTION AND REMARKS
------------	------	------------	-------------------------



Core No.	Interval	Interval	Interval	Correction Factor	Revised Interval
m	m	m	m	%	m
1	2532.0 - 2536.4	3.4	2533.0 - 2536.4	3.4	100
2	2536.4 - 2541.4	5.0	2537.4 - 2541.4	4.0	80
3	2541.4 - 2545.8	4.4	2542.4 - 2545.8	3.0	83
4	2545.8 - 2550.2	4.4	2546.8 - 2550.2	3.0	86
5	2550.2 - 2554.6	4.4	2551.2 - 2554.6	3.0	86
6	2554.6 - 2559.0	4.4	2555.6 - 2559.0	3.0	86
7	2559.0 - 2563.4	4.4	2560.0 - 2563.4	3.0	86

Well 34/7-4 - Completion Test Results				
Run In: 26.12.84				
Depth: 2517 m	Hydrostatic: 6150 psi/g	Formation pressure: 5578 psi	Temp. corr.: 384.6	Remarks: Tight
2520 m	6150	5584	385.5	Tight
2524 m	6150	5597	385.9	Tight
2528 m	6150	5607	386.3	Tight
2532 m	6150	5617	386.7	Tight
2536 m	6150	5627	387.1	Tight
2540 m	6150	5637	387.5	Tight
2544 m	6150	5647	387.9	Tight
2548 m	6150	5657	388.3	Tight
2552 m	6150	5667	388.7	Tight
2556 m	6150	5677	389.1	Tight
2560 m	6150	5687	389.5	Tight
2564 m	6150	5697	389.9	Tight
2568 m	6150	5707	390.3	Tight
2572 m	6150	5717	390.7	Tight
2576 m	6150	5727	391.1	Tight
2580 m	6150	5737	391.5	Tight
2584 m	6150	5747	391.9	Tight
2588 m	6150	5757	392.3	Tight
2592 m	6150	5767	392.7	Tight
2596 m	6150	5777	393.1	Tight
2600 m	6150	5787	393.5	Tight
2604 m	6150	5797	393.9	Tight
2608 m	6150	5807	394.3	Tight
2612 m	6150	5817	394.7	Tight
2616 m	6150	5827	395.1	Tight
2620 m	6150	5837	395.5	Tight
2624 m	6150	5847	395.9	Tight
2628 m	6150	5857	396.3	Tight
2632 m	6150	5867	396.7	Tight
2636 m	6150	5877	397.1	Tight
2640 m	6150	5887	397.5	Tight
2644 m	6150	5897	397.9	Tight
2648 m	6150	5907	398.3	Tight
2652 m	6150	5917	398.7	Tight
2656 m	6150	5927	399.1	Tight
2660 m	6150	5937	399.5	Tight
2664 m	6150	5947	399.9	Tight
2668 m	6150	5957	400.3	Tight
2672 m	6150	5967	400.7	Tight
2676 m	6150	5977	401.1	Tight
2680 m	6150	5987	401.5	Tight
2684 m	6150	5997	401.9	Tight
2688 m	6150	6007	402.3	Tight
2692 m	6150	6017	402.7	Tight
2696 m	6150	6027	403.1	Tight
2700 m	6150	6037	403.5	Tight
2704 m	6150	6047	403.9	Tight
2708 m	6150	6057	404.3	Tight
2712 m	6150	6067	404.7	Tight
2716 m	6150	6077	405.1	Tight
2720 m	6150	6087	405.5	Tight
2724 m	6150	6097	405.9	Tight
2728 m	6150	6107	406.3	Tight
2732 m	6150	6117	406.7	Tight
2736 m	6150	6127	407.1	Tight
2740 m	6150	6137	407.5	Tight
2744 m	6150	6147	407.9	Tight
2748 m	6150	6157	408.3	Tight
2752 m	6150	6167	408.7	Tight
2756 m	6150	6177	409.1	Tight
2760 m	6150	6187	409.5	Tight
2764 m	6150	6197	409.9	Tight
2768 m	6150	6207	410.3	Tight
2772 m	6150	6217	410.7	Tight
2776 m	6150	6227	411.1	Tight
2780 m	6150	6237	411.5	Tight
2784 m	6150	6247	411.9	Tight
2788 m	6150	6257	412.3	Tight
2792 m	6150	6267	412.7	Tight
2796 m	6150	6277	413.1	Tight
2800 m	6150	6287	413.5	Tight
2804 m	6150	6297	413.9	Tight
2808 m	6150	6307	414.3	Tight
2812 m	6150	6317	414.7	Tight
2816 m	6150	6327	415.1	Tight
2820 m	6150	6337	415.5	Tight
2824 m	6150	6347	415.9	Tight
2828 m	6150	6357	416.3	Tight
2832 m	6150	6367	416.7	Tight
2836 m	6150	6377	417.1	Tight
2840 m	6150	6387	417.5	Tight
2844 m	6150	6397	417.9	Tight
2848 m	6150	6407	418.3	Tight
2852 m	6150	6417	418.7	Tight
2856 m	6150	6427	419.1	Tight
2860 m	6150	6437	419.5	Tight
2864 m	6150	6447	419.9	Tight
2868 m	6150	6457	420.3	Tight
2872 m	6150	6467	420.7	Tight
2876 m	6150	6477	421.1	Tight
2880 m	6150	6487	421.5	Tight
2884 m	6150	6497	421.9	Tight
2888 m	6150	6507	422.3	Tight
2892 m	6150	6517	422.7	Tight
2896 m	6150	6527	423.1	Tight
2900 m	6150	6537	423.5	Tight
2904 m	6150	6547	423.9	Tight
2908 m	6150	6557	424.3	Tight
2912 m	6150	6567	424.7	Tight
2916 m	6150	6577	425.1	Tight
2920 m	6150	6587	425.5	Tight
2924 m	6150	6597	425.9	Tight
2928 m	6150	6607	426.3	Tight
2932 m	6150	6617	426.7	Tight
2936 m	6150	6627	427.1	Tight
2940 m	6150	6637	427.5	Tight
2944 m	6150	6647	427.9	Tight
2948 m	6150	6657	428.3	Tight
2952 m	6150	6667	428.7	Tight
2956 m	6150	6677	429.1	Tight
2960 m	6150	6687	429.5	Tight
2964 m	6150	6697	429.9	Tight
2968 m	6150	6707	430.3	Tight
2972 m	6150	6717	430.7	Tight
2976 m	6150	6727	431.1	Tight
2980 m	6150	6737	431.5	Tight
2984 m	6150	6747	431.9	Tight
2988 m	6150	6757	432.3	Tight
2992 m	6150	6767	432.7	Tight
2996 m	6150	6777	433.1	Tight
3000 m	6150	6787	433.5	Tight
3004 m	6150	6797	433.9	Tight
3008 m	6150	6807	434.3	Tight
3012 m	6150	6817	434.7	Tight
3016 m	6150	6827	435.1	Tight
3020 m	6150	6837	435.5	Tight
3024 m	6150	6847	435.9	Tight
3028 m	6150	6857	436.3	Tight
3032 m	6150	6867	436.7	Tight
3036 m	6150	6877	437.1	Tight
3040 m	6150	6887	437.5	Tight
3044 m	6150	6897	437.9	Tight
3048 m	6150	6907	438.3	Tight
3052 m	6150	6917	438.7	Tight
3056 m	6150	6927	439.1	Tight
3060 m	6150	6937	439.5	Tight
3064 m	6150	6947	439.9	Tight
3068 m	6150	6957	440.3	Tight
3072 m	6150	6967	440.7	Tight
3076 m	6150	6977	441.1	Tight
3080 m	6150	6987	441.5	Tight
3084 m	6150	6997	441.9	Tight
3088 m	6150	7007	442.3	Tight
3092 m	6150	7017	442.7	Tight
3096 m	6150	7027	443.1	Tight
3100 m	6150	7037	443.5	Tight
3104 m	6150	7047	443.9	Tight
3108 m	6150	7057	444.3	Tight
3112 m	6150	7067	444.7	Tight
3116 m	6150	7077	445.1	Tight
3120 m	6150	7087	445.5	Tight
3124 m	6150	7097	445.9	Tight
3128 m	6150	7107	446.3	Tight
3132 m	6150	7117	446.7	Tight
3136 m	6150	7127	447.1	Tight
3140 m	6150	7137	447.5	Tight
3144 m	6150	7147	447.9	Tight
3148 m	6150	7157	448.3	Tight
3152 m	6150	7167	448.7	Tight
3156 m	6150	7177	449.1	Tight
3160 m	6150	7187	449.5	Tight
3164 m	6150	7197	449.9	Tight
3168 m	6150	7207	450.3	Tight
3172 m	6150	7217	450.7	Tight
3176 m	6150	7227	451.1	Tight
3180 m	6150	7237	451.5	Tight
3184 m	6150	7247	451.9	Tight
3188 m	6150	7257	452.3	Tight
3192 m	6150	7267	452.7	Tight
3196 m	6150	7277	453.1	Tight
3200 m	6150	7287	453.5	Tight
3204 m	6150	7297	453.9	Tight
3208 m	6150	7307	454.3	Tight
3212 m	6150	7317	454.7	Tight
3216 m	6150	7327	455.1	Tight
3220 m	6150	7337	455.5	Tight
3224 m	6150	7347	455.9	Tight
3228 m	6150	7357</		