

E.A.N. COMPLETION LOG

Location map: [Map showing well location in the North Sea area]

Coordinates: 02°04'52.33"E UTM X: 648.6243E Y: 6.642.898.4N

Well-site geologists: J. BOSCH, V. HARTVIG, D. STENSLAND, M. TISSERANT

Approved by: _____ date

Country: NORWAY
 Licence: 024
 Owners: E.A.N. TOTAL MARINE NORSK
 Norsk Hydro, Statoil
 Frigg
 Field: FRIGG

Date spudded: 08.03.95
 At total depth: 13.05.95
 Completed: 26.05.95
 R.K.B. [unclear]
 Water depth: -391m
 Total depth (water): 2729.5m RKB
 Total depth (floor): 2729.5m R1

Rig: HYFORD DOLPHIN
 Contractor: DOLPHIN
 Mud logging: GEOSERVICES

WELL STATUS: TEMPORARILY ABANDONED

TOP OF SAND: 1918.6m RKB
 GAS-OIL CONTACT: 1968.7m RKB
 OIL CONTACT: 1978m RKB

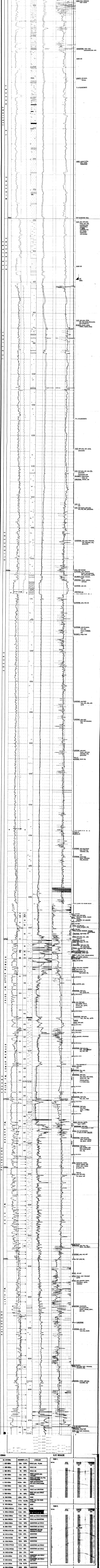
Casing	L.O.T.	Comments:
30" - 846m	1.41	
13 3/4" - 1856m	1.62	

LOGS RUN

ISF-LSS-GR	LDL-GR	RFT	SHOT	CEL-VOL	C.E.T.	C.S.T.
1. 863-188m	1. 864-188m	1. 1918.5-2049.5m	1. 2720-1856m	1. 1856-435m	1. 2127-1750m	2. 2291-2701m
2. 1872-847m	2. 1872.5-847m	2. 2685.4-1919.9m	2. 2720-1856m	2. 2127-1530m	2. 2127-1330m	
3. 2065-1850m	LDL-CNL-NIT			3. 2127-1530m	4. 2127-1530m	
4. 2720-1850m	3. 2065-1850m			4. 2127-1530m		
	4. 2720-1850m					
DLLMSFL-GR						
1. 2065-1850m						

LEGEND

Diagram showing well casing, core locations (K1-K20), and geological symbols for various rock types and logs.



R.F.P. RESULTS

No.	DEPTH	RECOVERY %	LITHOLOGY
1	1875-1880m	3.5m 90%	SHALE grey cl-silty
2	1882-1882m	8m 90%	SHALE AIR
3	1882-1891m	9m 90%	SHALE greyish grey
4	1891-1900m	7.5m 90%	SHALE and SAND very fine, micaceous
5	1900-1910m	17.2m 90%	SAND and SANDSTONE with some SHALY lenses
6	1918-1930m	16.5m 80%	SHALE
7	1938-1938m	0.5m 90%	SHALE
8	1938-1938m	8m 100%	SHALE and LIMESTONE
9	1938-1940m	9m 100%	SAND with some SHALE
10	1948-1948m	0.65m 90%	SAND
11	1948-1978m	27.3m 92.2%	SAND, Loc. thin levels of SHALE
12	1978-2005m	27.3m 100%	SHALE
13	2005.4-2026.4m	27.3m 100%	SHALE
14	2026.4-2045.6m	17.2m 90%	SAND and SHALE interbedded
15	2045.6-2064.5m	7.0m 90%	SHALE and SANDSTONE
16	2064.5-2084.1m	17.3m 100%	SANDSTONE and SHALE
17	2084.1-2102m	18.5m 100%	SANDSTONE and SHALE
18	2102-2119.5m	18.5m 90%	SANDSTONE with thin bedded layers of SHALE
19	2119.5-2134.6m	15.2m 90%	SANDSTONE
20	2134.6-2153.2m	18.3m 100%	SANDSTONE
21	2153.2-2178.2m	12.7m 90%	SANDSTONE and SHALE
22	2178.2-2178.3m	0.7m 90%	SAND
23	2178.2-2178.3m	0.7m 90%	SANDSTONE with SHALE
24	2178.2-2178.3m	17.2m 90%	SANDSTONE and SHALE
25	2178.2-2178.3m	0.6m 90%	SAND
26	2178.2-2178.3m	8.3m 97%	SANDSTONE with SHALE and TUFF
27	2222-2241m	16.7m 90%	SANDSTONE with SHALE and TUFF
28	2242-2252m	7.2m 85.9%	SANDSTONE
A	2252-2278.5m	16.5m 100%	SANDSTONE and SHALE
B	2278.5-2418m	7m 100%	SANDSTONE argillaceous
C	2538-2538.5m	0.5m 100%	SHALE and SANDSTONE
D	2604-2606m	0.5m 90%	SHALE
E	2729-2729m	0.7m 97%	SHALE