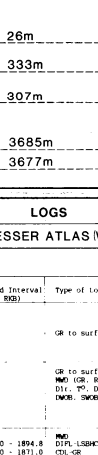


ESSEN / STATOIL / NORSK HYDRO / ELF
 DEMINEX / DNO



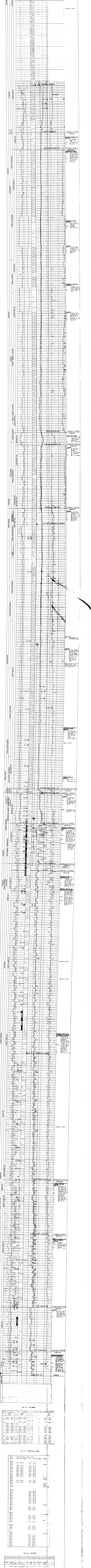
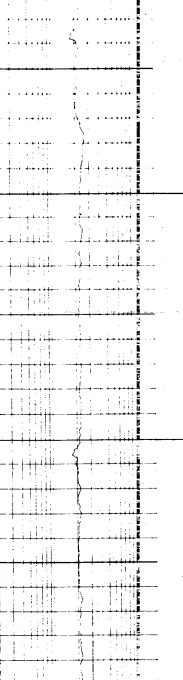
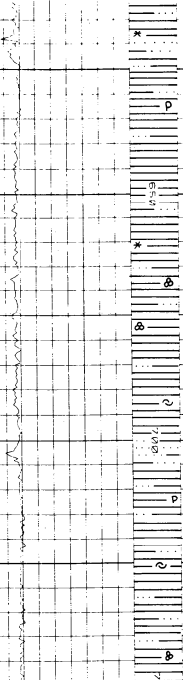
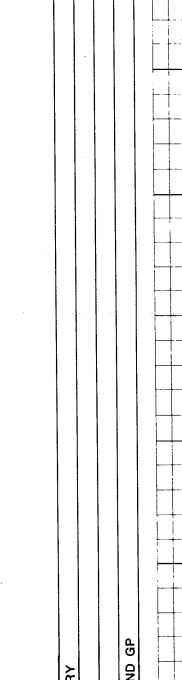
Saga Petroleum a.s.

Composite Well Log

REGISTRERT Well 34/7-6

COUNTRY	: NORWAY	LOG	: TREASURE 582A
STATE	: TRAFSVOER SPOR	LOCATION	: 602175 10.85°N
OPERATOR	: SAGA PETROLEUM A.S.	LATITUDE	: 57°27' 10.85"N
LEISURE	: OBB	LONGITUDE	: 0°09' 17.28"E
RIG TAKEN OVER BY THE LICENSEE	: MARCH 1993 1993	ELEVATIONS	
DATE PRODDING	: MARCH 1993 1993	RKE - MEAN SEA LEVEL	: 200
T. DATE	: MAY 2001 2001	WATER DEPTH	: 420.0m
RIG RELEASED	: MAY 2001 2001	TOTAL DEPTH	: 3685m
COMPLETION STATUS	: P.I.A. AS AN OIL WELL	DRILLER'S DEPTH	: 3677m

DRILLING CONTRACTOR	: WELLESSEN	MUDLOGGING SERVICE	: MUDLOGGING SERVICE
WELL HEADS	: 453	EXPLORE LOGGING	: 000
CASING	SHOULDER	HOLE SIZE	INTERVAL (m)
20"	453	28" 47' 12"	480-985m
13 3/8"	935	17 1/2"	905-1000m
9 5/8"	3000	12 1/4"	1895-3015m
		8 1/2"	3015-3685m



1	254.0	2073.1	11.1	208.9	2036.8	4.2				
2	254.0	2073.1	11.1	208.9	2036.8	4.2				

1	254.0	2073.1	11.1	208.9	2036.8	4.2				
2	254.0	2073.1	11.1	208.9	2036.8	4.2				