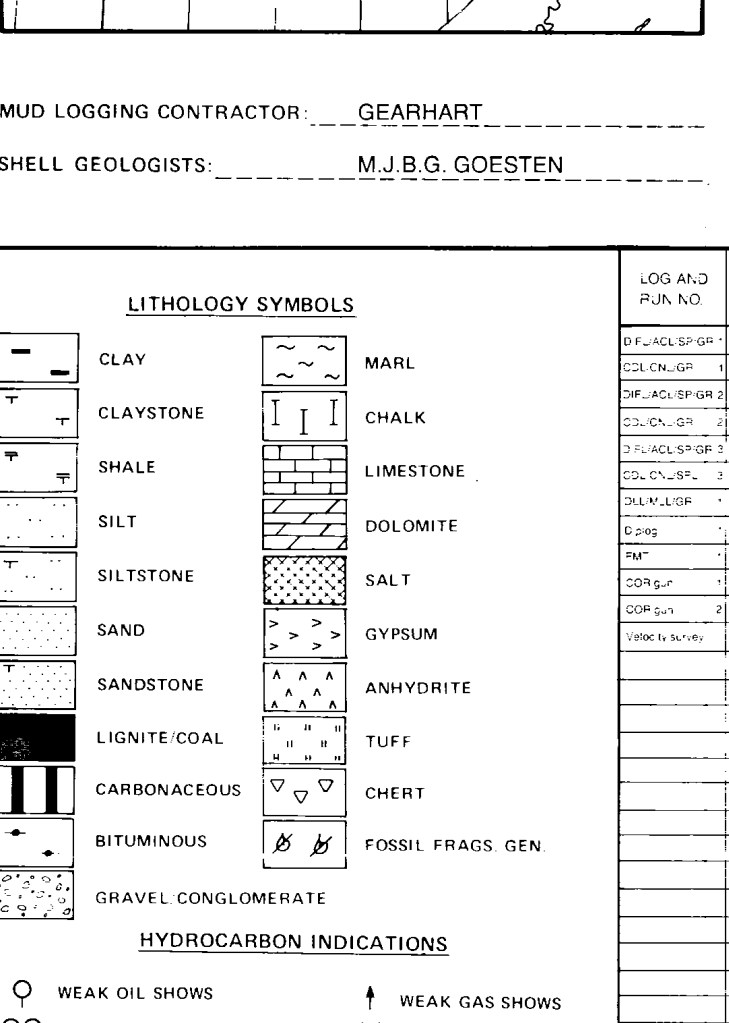


COMPLETION LOG

A/S Norske Shell, E & P
COMPLETION LOG WELL: 6407/9-3



LICENCE 093
FIELD DRAUGEN
COORDINATES 64° 19' 48" 07° 46' 31"
SPUD DATE 03.05.85
COMPLETION DATE 29.07.85
RIG BORQVY DOLPHIN
CONTRACTOR DOLPHIN SERVICES
K.B. ELEVATION 2528m
WATER DEPTH 275m
T.D. DRILLER 1868mddf
T.D. LOGGERS 1866.6mddf
T.D. FORMATION MIDDLE DRAKE EQUIVALENT
STATUS SUSPENDED
CASING RECORD 20" AT 326.5m, 20" AT 769m, 13 1/2" AT 1801m, 9 1/2" AT 1843m

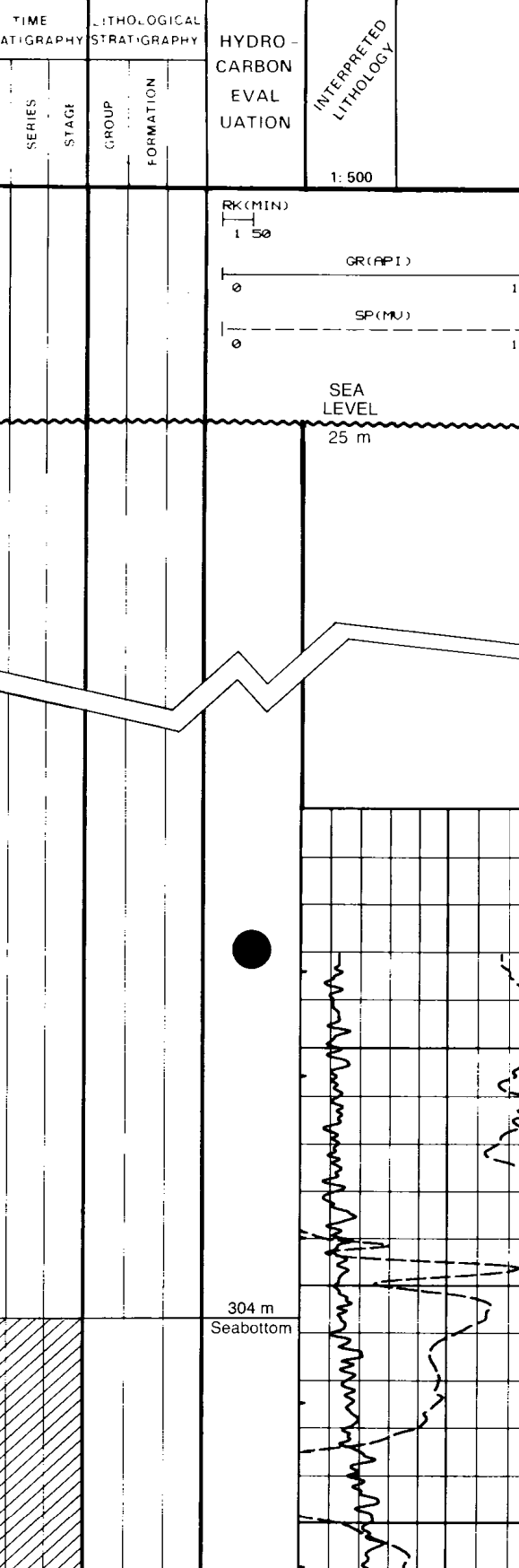


Table with columns: LOG NO., DATE, INTERVAL, DEPTH, etc. Contains log run data.

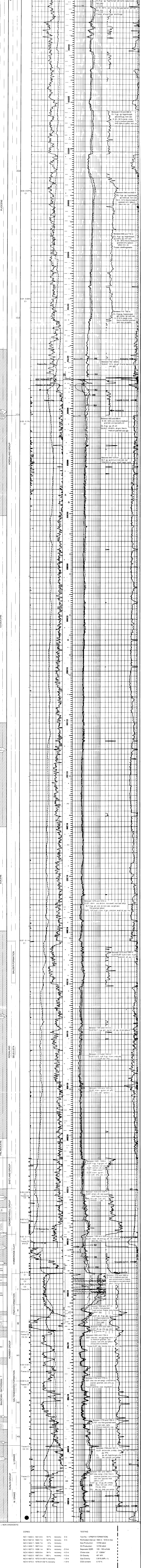
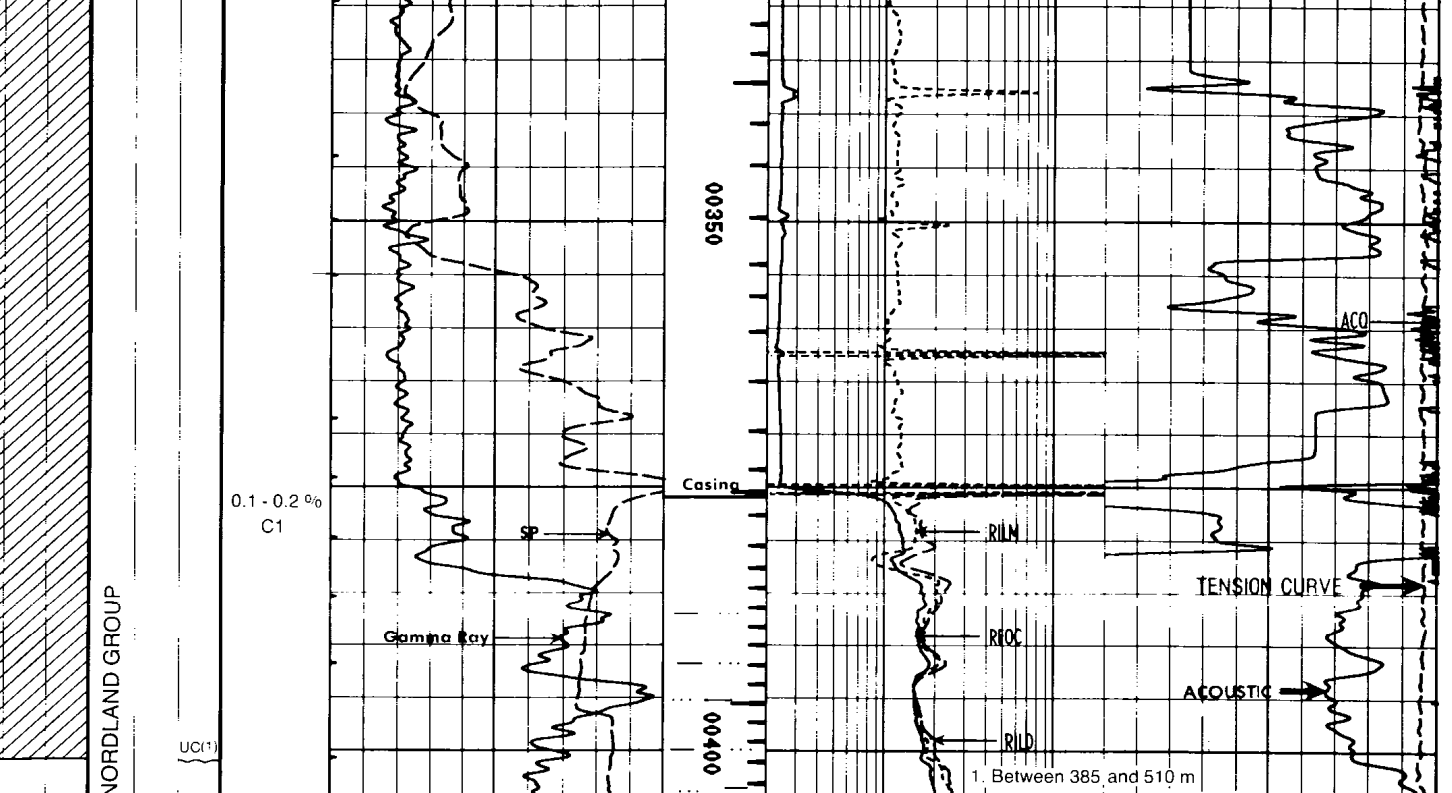


Table with columns: CORES, TESTING, and RFT PRESSURE GRADIENTS. Lists core details and test results.