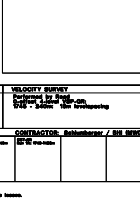


AREA: North Sea
 LICENCE: PL 167
 COORDINATES: 59° 59' 27.86" N latitude
 02° 17' 43.07" E longitude
 KB: 2m
 WATER DEPTH: 120m
 TOTAL DEPTH: 1907m
 PUL AT T.D.: 1907m
 SPUD DATE: 22 May 2002
 RIG RELEASE: 22 June 2002
 WELL STATUS: P & A - oil and gas discovery
 NO: England Delphi
 CONTRACTOR: Delphi A.S.
 GEOLOGIST: J.Basson, T.F.Kristensen, O.Beyer,
 L.Havard
 PREPARED BY: P.Farmer



CASING DATA	LEAK OFF TESTS	VELOCITY SURVEY
1077m 1077m 1077m	LOT 180 g/cm FIT 180 g/cm	Performed by Shell Contract 1 June 2002 045 - 240m 10m trackspacing

LOGS RUN	CONTRACTOR
1077m 1077m 1077m	Schlumberger / SHE BRD1

COMMENTS:
 No returns of cuttings from 1907 m to TD due to down hole losses.
 Log curves presented, complete NMR log data omitted with shallow log data.

