

**WELL: 251-8**

**E.A.N. COMPLETION LOG SCALE: 1:500**

Location map:

Country: NORWAY  
 Owners: E.A.N. NORSEA HYDROTEKSTOL  
 Field: FRIGO  
 Date spudded: 28.05.85  
 In hole depth: 25.0285  
 Completed: 25.0285  
 R.K.L.: 25m  
 Water depth: 102m  
 Total depth (cmm): 2600m (2571m TVD)  
 Total depth (meas): 2600m  
 SIG: 1000  
 Contractor: DOLPHIN  
 Mud logging: GEODEP/SES

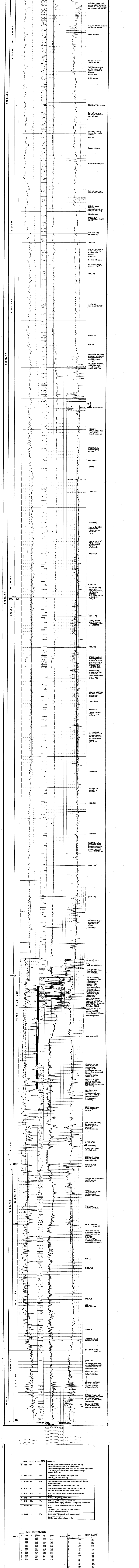
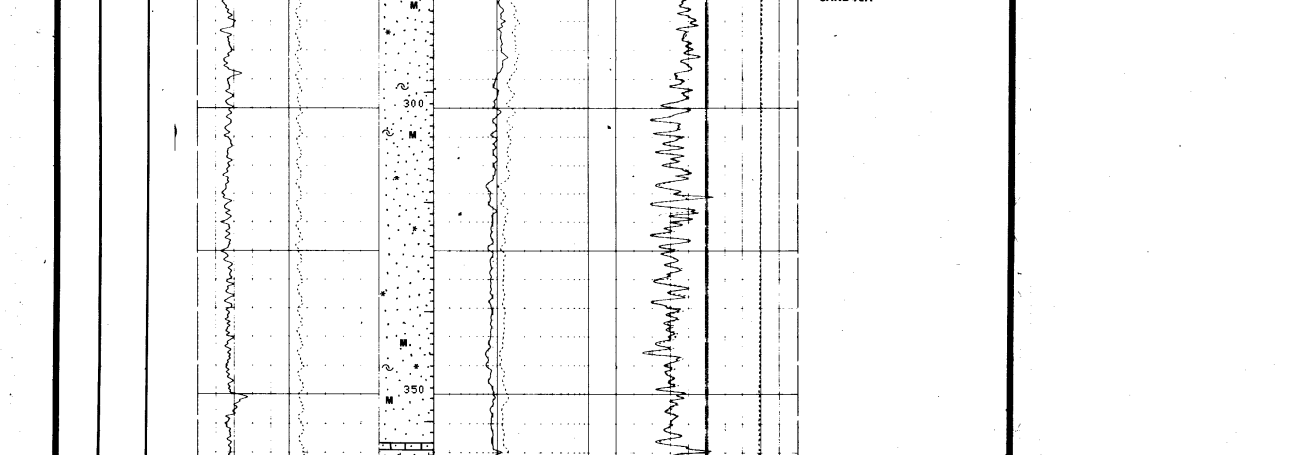
Coordinates: UTM  
 X: 468000.00  
 Y: 664871.17N

Well site geologist: J. BOIC M. TISSERANT-DENSLAND  
 Approved by: \_\_\_\_\_ date: \_\_\_\_\_

**WELL STATUS:** PLUGGED AND TEMPORARILY ABANDONED  
 GAS - WATER CONTACT: 1979.2m RWB  
 1958.0m TVD

Casing	L.O.I	Comments
30" - 197m	1.44	
13 3/8" - 191m	1.69	
9 5/8" - 172m	1.40	

IFS - LSS - GR	LST - GR	R.O.T.	RFT	CSI	SLI	VDL	VSP
1.1915 - 197m	1.1915 - 197m	1.1910 - 197m	1.2103 - 1930.5m	1.145625 51	1.1915 - 197m	2460 - 300m	
2.1897 - 191m	2.1897 - 191m	2.1890 - 191m	15 PRESSURE TEST	15C-08	2.1890 - 191m	191m - 197m	191m - 197m SURVEY
3.2195 - 191m	LST - OIL		2.2240 - 1930.5m		3.2197 - 191m	191m	
4.2644 - 191.2m			1.2645 - 1912.5m	1.2128 - 191m	4.2644 - 191.2m	174m	
5.2750 - 191.2m			3.2508 - 191m	17 PRESSURE TEST	5.2750 - 191.2m		



FROM - TO (m)	% OF RECOVERY	REMARKS
1. 1900 - 1960	80%	SAND FM. Fine coarse to medium light grey to red to dk grey with sandy yellowish green to dk green. Contains some calc. and organic content.
2. 1950 - 1962.2	100%	SAND FM. Fine to medium grey to dk grey silty and sandy. Contains some calc. and organic content.
3. 1962.2 - 197	100%	SAND FM. Fine to medium grey to dk grey silty and sandy. Contains some calc. and organic content.
4. 197 - 197	100%	SAND FM. Fine to medium grey to dk grey silty and sandy. Contains some calc. and organic content.
5. 197 - 205	80%	SAND FM. Fine to medium grey to dk grey silty and sandy. Contains some calc. and organic content.
6. 205 - 205.3	80%	SAND FM. Fine to medium grey to dk grey silty and sandy. Contains some calc. and organic content.
7. 205.3 - 208.3	70%	SAND FM. Fine to medium grey to dk grey silty and sandy. Contains some calc. and organic content.
8. 208.3 - 212	80%	SAND FM. Fine to medium grey to dk grey silty and sandy. Contains some calc. and organic content.

RUN #	DATE	TIME	DEPTH (m)	TEMPERATURE (°C)	R.F.T. RUN #	DATE	TIME	DEPTH (m)	TEMPERATURE (°C)
1	13/05/2010	08:00	1979.2	25.0	1	13/05/2010	08:00	1979.2	25.0
2	13/05/2010	08:15	1958.0	25.0	2	13/05/2010	08:15	1958.0	25.0
3	13/05/2010	08:30	191.0	25.0	3	13/05/2010	08:30	191.0	25.0

SWC	RUN #	DATE	REMOVED	DEPTH
1	1	13/05/2010	48	2095.250m

FROM - TO (m)	% OF RECOVERY	REMARKS
1. 1900 - 1960	80%	SAND FM. Fine coarse to medium light grey to red to dk grey with sandy yellowish green to dk green. Contains some calc. and organic content.
2. 1950 - 1962.2	100%	SAND FM. Fine to medium grey to dk grey silty and sandy. Contains some calc. and organic content.
3. 1962.2 - 197	100%	SAND FM. Fine to medium grey to dk grey silty and sandy. Contains some calc. and organic content.
4. 197 - 197	100%	SAND FM. Fine to medium grey to dk grey silty and sandy. Contains some calc. and organic content.
5. 197 - 205	80%	SAND FM. Fine to medium grey to dk grey silty and sandy. Contains some calc. and organic content.
6. 205 - 205.3	80%	SAND FM. Fine to medium grey to dk grey silty and sandy. Contains some calc. and organic content.
7. 205.3 - 208.3	70%	SAND FM. Fine to medium grey to dk grey silty and sandy. Contains some calc. and organic content.
8. 208.3 - 212	80%	SAND FM. Fine to medium grey to dk grey silty and sandy. Contains some calc. and organic content.