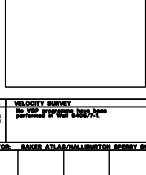


COMPOSITE LOG
1 : 500

ELLIDA

AREA: Norwegian Sea
 COORDINATE: PL281
 04° 17' 56.42"N
 09° 07' 58.80"E
 KB: 26m NSL
 WATER DEPTH: 1206 mWD
 TOTAL DEPTH: 2876 mWD
 PRL AT T.D.: 1565 Pa
 RIG DATE: 20.08.2008
 RIG RELEASE: 15.10.2008
 WELL STATUS: Plugged back for sidetrack
 RIG: WEST NAVIGATOR
 CONTRACTOR: NEDVIG
 GEOLOGIST: L. RASMUSSEN, J. BARSET, P. SKJERVEM, K. TOWNLEY, D. AJOPOVNA
 PREPARED BY: S. HOYDEN



CASING DATA	LEAK OFF TESTS	VELOCITY SURVEY
20" 1200 10 1800 6 1/2" 2207	1200 1200	No VSP programs have been performed at well 64087-1.

LOGS RUN: 10 1800, 10 1800, 10 1800
 CONTRACTOR: BAKER ATLAS/INTEGRATION SERVICE

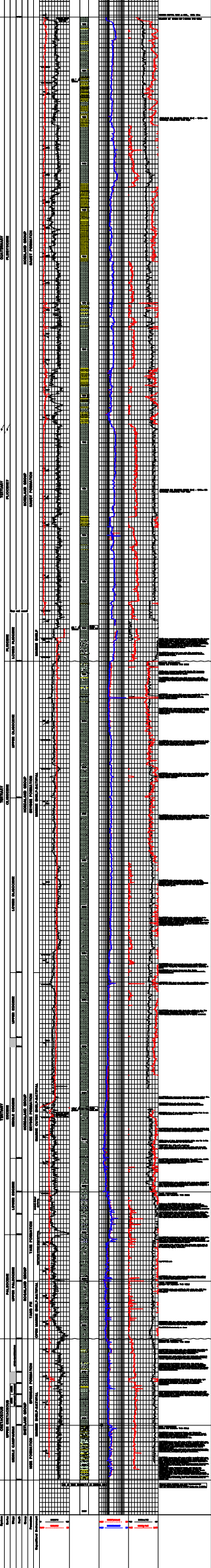
COMMENTS:
 The well 64087-1 was drilled to 2876m and then plugged back into the 10 1/2" casing due to higher pressure than projected in the NSL Formation.
 LWD was logged by Baker Atlas in the 20" and 10 1/2" hole sections, while LWD was logged by Halliburton in the 10 1/2" hole section. In addition LWD was run in the 6 1/2" hole section for data correlation.
 The 2 1/2" "wireline casing hole" was drilled into the structure 600 days from the well 64087-1 being plugged in 10 1/2".
 Baker Atlas ran wireline logs in the 10 1/2" hole.

LITHOLOGICAL SYMBOLS

[Symbol]	[Symbol]	[Symbol]	[Symbol]	[Symbol]	[Symbol]	[Symbol]	[Symbol]
[Symbol]	[Symbol]	[Symbol]	[Symbol]	[Symbol]	[Symbol]	[Symbol]	[Symbol]
[Symbol]	[Symbol]	[Symbol]	[Symbol]	[Symbol]	[Symbol]	[Symbol]	[Symbol]
[Symbol]	[Symbol]	[Symbol]	[Symbol]	[Symbol]	[Symbol]	[Symbol]	[Symbol]

Well Log

Depth (m)	Depth (ft)	Pressure (bar)	Pressure (psi)	Temperature (°C)	Temperature (°F)	Velocity (m/s)	Velocity (ft/s)	Well Log Description
-----------	------------	----------------	----------------	------------------	------------------	----------------	-----------------	----------------------



Well Log

Depth (m)	Depth (ft)	Pressure (bar)	Pressure (psi)	Temperature (°C)	Temperature (°F)	Velocity (m/s)	Velocity (ft/s)	Well Log Description
-----------	------------	----------------	----------------	------------------	------------------	----------------	-----------------	----------------------