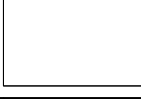


AREA: North Sea  
 LICENSE: PL 167  
 COORDINATES: 59° 59' 27,99" N latitude  
 03° 17' 43,07" E longitude  
 KB: 37m  
 WATER DEPTH: 219m  
 TOTAL DEPTH: 219m  
 P&A AT T.D.: Tor Pn  
 SPUD DATE: 22 June 2003  
 RIG RELEASE: 22 June 2003  
 WELL STATUS: P & A - dry well  
 RIG: Bergland Dolph  
 CONTRACTOR: Dolph A.S.  
 GEOLOGIST: O.Boyer, I.Wilsvold, S.Selvig  
 PREPARED BY: P.Perner

## LOCATION MAP

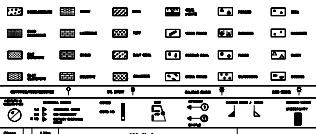


CASING DATA	LEAK OFF TESTS	VELOCITY SURVEY
30" 130m 18 1/2" 167m	LOT 180 g/cm FIT 180 g/cm	No survey performed

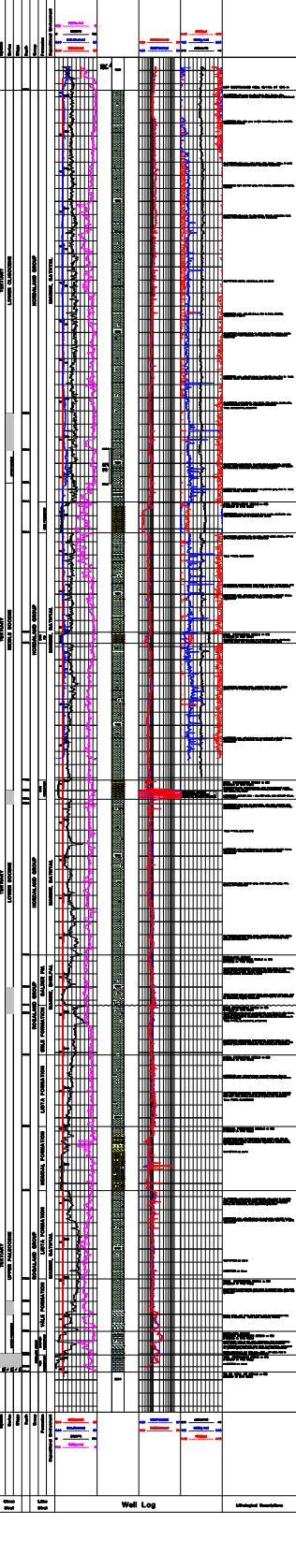
LOG RUN	CONTRACTOR
16/1-6A	Baker Hughes / RH NWCO

COMMENTS:  
 Well 16/1-6A was drilled from 16/1-6B with KOP shut off point at 1215 mtd.  
 Log curves presented, normally SPGR log data without with velocity log data.  
 Vellogs could only be logged from 1950 mtd, due to hole condition.

## LITHOLOGICAL SYMBOLS



DEPTH (m)	DEPTH (ft)	LOG CURVE	LOG CURVE	LOG CURVE	LOG CURVE	LOG CURVE
0	0	GR	GR	GR	GR	GR



Depth	Depth	Log Curve	Log Curve	Log Curve	Log Curve	Log Curve
0	0	GR	GR	GR	GR	GR

Depth	Depth	Log Curve	Log Curve	Log Curve	Log Curve	Log Curve
0	0	GR	GR	GR	GR	GR