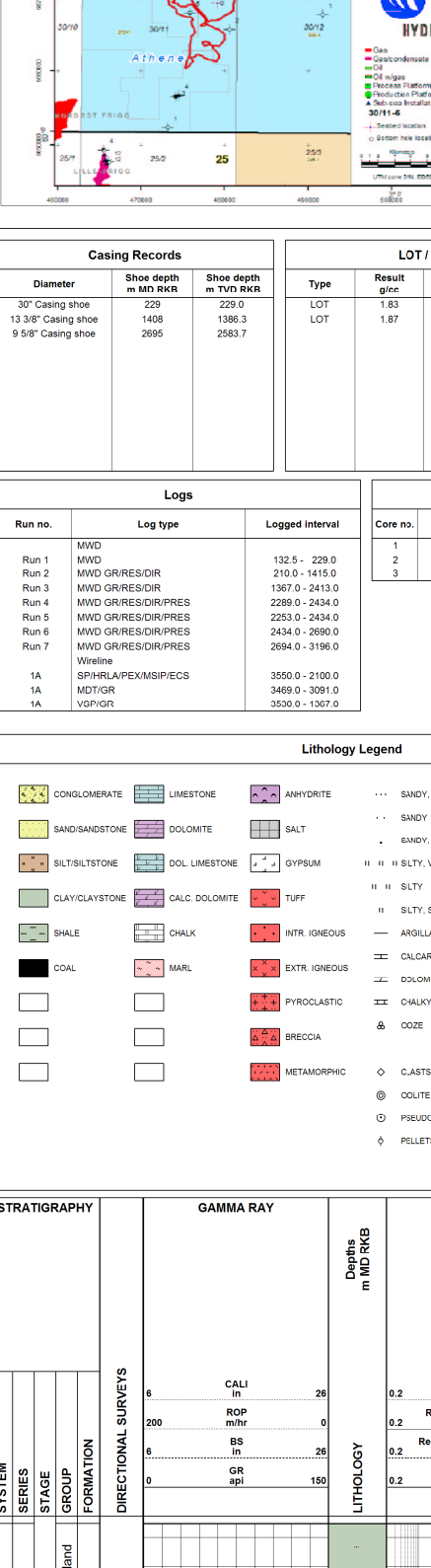
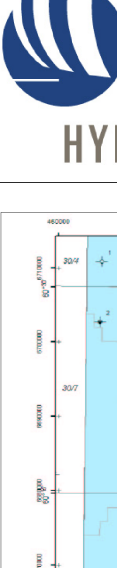


# COMPLETION LOG

## BRONTES

### Well: 1/ 500

### Scale: 30/11-6S



**KB Elevation** 29.2 m  
**KB Reference** 222.5 m  
**Depth Reference** 3550 m MD RGS  
2225 m TD RGS

**Total Depth (Driller)** 3550 m MD RGS  
2225 m TD RGS

**Formation at Total Depth** Chalk

**Date Spudded** 01-16-2004  
**Date Reshotted** 24-29-2004  
**Date Abandoned** 22-27-2004

**Well Status** P.A.

**Well Classification** Exploration

**Country** Mexico  
**Licence** Brontes Coahuila  
**Ownership** Brontes Coahuila

**Drilling Contractor** Odebrecht  
**Drilling Company** Odebrecht  
**Geologists** Odebrecht

**Prepared by** E. Skiffington  
**Checked by** J. Skiffington  
**Date** NOVEMBER 2004

**Well Coordinates** UTM zone 18  
Easting: 670 323 27 N  
Northing: 6 699 104 100

#### Crane Records

| Run No. | Crane | Run Date | Run Time | Run Depth |
|---------|-------|----------|----------|-----------|
| 1       | 1     | 01/16/04 | 08:00    | 2225      |
| 2       | 1     | 01/16/04 | 08:00    | 2225      |

#### Log Log

| Run No. | Log Type | Log Interval  |
|---------|----------|---------------|
| 1       | LOG      | 103.0 - 220.0 |
| 2       | LOG      | 220.0 - 225.0 |
| 3       | LOG      | 225.0 - 230.0 |
| 4       | LOG      | 230.0 - 235.0 |
| 5       | LOG      | 235.0 - 240.0 |
| 6       | LOG      | 240.0 - 245.0 |
| 7       | LOG      | 245.0 - 250.0 |
| 8       | LOG      | 250.0 - 255.0 |
| 9       | LOG      | 255.0 - 260.0 |
| 10      | LOG      | 260.0 - 265.0 |
| 11      | LOG      | 265.0 - 270.0 |
| 12      | LOG      | 270.0 - 275.0 |
| 13      | LOG      | 275.0 - 280.0 |
| 14      | LOG      | 280.0 - 285.0 |
| 15      | LOG      | 285.0 - 290.0 |
| 16      | LOG      | 290.0 - 295.0 |
| 17      | LOG      | 295.0 - 300.0 |
| 18      | LOG      | 300.0 - 305.0 |
| 19      | LOG      | 305.0 - 310.0 |
| 20      | LOG      | 310.0 - 315.0 |
| 21      | LOG      | 315.0 - 320.0 |
| 22      | LOG      | 320.0 - 325.0 |
| 23      | LOG      | 325.0 - 330.0 |
| 24      | LOG      | 330.0 - 335.0 |
| 25      | LOG      | 335.0 - 340.0 |
| 26      | LOG      | 340.0 - 345.0 |
| 27      | LOG      | 345.0 - 350.0 |

#### Core

| Core No. | Core Depth | Core Interval | Core Description |
|----------|------------|---------------|------------------|
| 1        | 225.0      | 225.0 - 230.0 | CHALK            |
| 2        | 230.0      | 230.0 - 235.0 | CHALK            |
| 3        | 235.0      | 235.0 - 240.0 | CHALK            |
| 4        | 240.0      | 240.0 - 245.0 | CHALK            |
| 5        | 245.0      | 245.0 - 250.0 | CHALK            |
| 6        | 250.0      | 250.0 - 255.0 | CHALK            |
| 7        | 255.0      | 255.0 - 260.0 | CHALK            |
| 8        | 260.0      | 260.0 - 265.0 | CHALK            |
| 9        | 265.0      | 265.0 - 270.0 | CHALK            |
| 10       | 270.0      | 270.0 - 275.0 | CHALK            |
| 11       | 275.0      | 275.0 - 280.0 | CHALK            |
| 12       | 280.0      | 280.0 - 285.0 | CHALK            |
| 13       | 285.0      | 285.0 - 290.0 | CHALK            |
| 14       | 290.0      | 290.0 - 295.0 | CHALK            |
| 15       | 295.0      | 295.0 - 300.0 | CHALK            |
| 16       | 300.0      | 300.0 - 305.0 | CHALK            |
| 17       | 305.0      | 305.0 - 310.0 | CHALK            |
| 18       | 310.0      | 310.0 - 315.0 | CHALK            |
| 19       | 315.0      | 315.0 - 320.0 | CHALK            |
| 20       | 320.0      | 320.0 - 325.0 | CHALK            |
| 21       | 325.0      | 325.0 - 330.0 | CHALK            |
| 22       | 330.0      | 330.0 - 335.0 | CHALK            |
| 23       | 335.0      | 335.0 - 340.0 | CHALK            |
| 24       | 340.0      | 340.0 - 345.0 | CHALK            |
| 25       | 345.0      | 345.0 - 350.0 | CHALK            |

#### Pressure points (MD)

| Run No. | Pressure Point | Pressure | Depth | Temp |
|---------|----------------|----------|-------|------|
| 1       | 225.0          | 103.0    | 225.0 | 27.0 |
| 2       | 230.0          | 103.0    | 230.0 | 27.0 |
| 3       | 235.0          | 103.0    | 235.0 | 27.0 |
| 4       | 240.0          | 103.0    | 240.0 | 27.0 |
| 5       | 245.0          | 103.0    | 245.0 | 27.0 |
| 6       | 250.0          | 103.0    | 250.0 | 27.0 |
| 7       | 255.0          | 103.0    | 255.0 | 27.0 |
| 8       | 260.0          | 103.0    | 260.0 | 27.0 |
| 9       | 265.0          | 103.0    | 265.0 | 27.0 |
| 10      | 270.0          | 103.0    | 270.0 | 27.0 |
| 11      | 275.0          | 103.0    | 275.0 | 27.0 |
| 12      | 280.0          | 103.0    | 280.0 | 27.0 |
| 13      | 285.0          | 103.0    | 285.0 | 27.0 |
| 14      | 290.0          | 103.0    | 290.0 | 27.0 |
| 15      | 295.0          | 103.0    | 295.0 | 27.0 |
| 16      | 300.0          | 103.0    | 300.0 | 27.0 |
| 17      | 305.0          | 103.0    | 305.0 | 27.0 |
| 18      | 310.0          | 103.0    | 310.0 | 27.0 |
| 19      | 315.0          | 103.0    | 315.0 | 27.0 |
| 20      | 320.0          | 103.0    | 320.0 | 27.0 |
| 21      | 325.0          | 103.0    | 325.0 | 27.0 |
| 22      | 330.0          | 103.0    | 330.0 | 27.0 |
| 23      | 335.0          | 103.0    | 335.0 | 27.0 |
| 24      | 340.0          | 103.0    | 340.0 | 27.0 |
| 25      | 345.0          | 103.0    | 345.0 | 27.0 |
| 26      | 350.0          | 103.0    | 350.0 | 27.0 |

#### Log Log

| Run No. | Log Type | Log Interval  |
|---------|----------|---------------|
| 1       | LOG      | 103.0 - 220.0 |
| 2       | LOG      | 220.0 - 225.0 |
| 3       | LOG      | 225.0 - 230.0 |
| 4       | LOG      | 230.0 - 235.0 |
| 5       | LOG      | 235.0 - 240.0 |
| 6       | LOG      | 240.0 - 245.0 |
| 7       | LOG      | 245.0 - 250.0 |
| 8       | LOG      | 250.0 - 255.0 |
| 9       | LOG      | 255.0 - 260.0 |
| 10      | LOG      | 260.0 - 265.0 |
| 11      | LOG      | 265.0 - 270.0 |
| 12      | LOG      | 270.0 - 275.0 |
| 13      | LOG      | 275.0 - 280.0 |
| 14      | LOG      | 280.0 - 285.0 |
| 15      | LOG      | 285.0 - 290.0 |
| 16      | LOG      | 290.0 - 295.0 |
| 17      | LOG      | 295.0 - 300.0 |
| 18      | LOG      | 300.0 - 305.0 |
| 19      | LOG      | 305.0 - 310.0 |
| 20      | LOG      | 310.0 - 315.0 |
| 21      | LOG      | 315.0 - 320.0 |
| 22      | LOG      | 320.0 - 325.0 |
| 23      | LOG      | 325.0 - 330.0 |
| 24      | LOG      | 330.0 - 335.0 |
| 25      | LOG      | 335.0 - 340.0 |
| 26      | LOG      | 340.0 - 345.0 |
| 27      | LOG      | 345.0 - 350.0 |

#### Core

| Core No. | Core Depth | Core Interval | Core Description |
|----------|------------|---------------|------------------|
| 1        | 225.0      | 225.0 - 230.0 | CHALK            |
| 2        | 230.0      | 230.0 - 235.0 | CHALK            |
| 3        | 235.0      | 235.0 - 240.0 | CHALK            |
| 4        | 240.0      | 240.0 - 245.0 | CHALK            |
| 5        | 245.0      | 245.0 - 250.0 | CHALK            |
| 6        | 250.0      | 250.0 - 255.0 | CHALK            |
| 7        | 255.0      | 255.0 - 260.0 | CHALK            |
| 8        | 260.0      | 260.0 - 265.0 | CHALK            |
| 9        | 265.0      | 265.0 - 270.0 | CHALK            |
| 10       | 270.0      | 270.0 - 275.0 | CHALK            |
| 11       | 275.0      | 275.0 - 280.0 | CHALK            |
| 12       | 280.0      | 280.0 - 285.0 | CHALK            |
| 13       | 285.0      | 285.0 - 290.0 | CHALK            |
| 14       | 290.0      | 290.0 - 295.0 | CHALK            |
| 15       | 295.0      | 295.0 - 300.0 | CHALK            |
| 16       | 300.0      | 300.0 - 305.0 | CHALK            |
| 17       | 305.0      | 305.0 - 310.0 | CHALK            |
| 18       | 310.0      | 310.0 - 315.0 | CHALK            |
| 19       | 315.0      | 315.0 - 320.0 | CHALK            |
| 20       | 320.0      | 320.0 - 325.0 | CHALK            |
| 21       | 325.0      | 325.0 - 330.0 | CHALK            |
| 22       | 330.0      | 330.0 - 335.0 | CHALK            |
| 23       | 335.0      | 335.0 - 340.0 | CHALK            |
| 24       | 340.0      | 340.0 - 345.0 | CHALK            |
| 25       | 345.0      | 345.0 - 350.0 | CHALK            |

#### Pressure points (MD)

| Run No. | Pressure Point | Pressure | Depth | Temp |
|---------|----------------|----------|-------|------|
| 1       | 225.0          | 103.0    | 225.0 | 27.0 |
| 2       | 230.0          | 103.0    | 230.0 | 27.0 |
| 3       | 235.0          | 103.0    | 235.0 | 27.0 |
| 4       | 240.0          | 103.0    | 240.0 | 27.0 |
| 5       | 245.0          | 103.0    | 245.0 | 27.0 |
| 6       | 250.0          | 103.0    | 250.0 | 27.0 |
| 7       | 255.0          | 103.0    | 255.0 | 27.0 |
| 8       | 260.0          | 103.0    | 260.0 | 27.0 |
| 9       | 265.0          | 103.0    | 265.0 | 27.0 |
| 10      | 270.0          | 103.0    | 270.0 | 27.0 |
| 11      | 275.0          | 103.0    | 275.0 | 27.0 |
| 12      | 280.0          | 103.0    | 280.0 | 27.0 |
| 13      | 285.0          | 103.0    | 285.0 | 27.0 |
| 14      | 290.0          | 103.0    | 290.0 | 27.0 |
| 15      | 295.0          | 103.0    | 295.0 | 27.0 |
| 16      | 300.0          | 103.0    | 300.0 | 27.0 |
| 17      | 305.0          | 103.0    | 305.0 | 27.0 |
| 18      | 310.0          | 103.0    | 310.0 | 27.0 |
| 19      | 315.0          | 103.0    | 315.0 | 27.0 |
| 20      | 320.0          | 103.0    | 320.0 | 27.0 |
| 21      | 325.0          | 103.0    | 325.0 | 27.0 |
| 22      | 330.0          | 103.0    | 330.0 | 27.0 |
| 23      | 335.0          | 103.0    | 335.0 | 27.0 |
| 24      | 340.0          | 103.0    | 340.0 | 27.0 |
| 25      | 345.0          | 103.0    | 345.0 | 27.0 |
| 26      | 350.0          | 103.0    | 350.0 | 27.0 |

#### Log Log

| Run No. | Log Type | Log Interval  |
|---------|----------|---------------|
| 1       | LOG      | 103.0 - 220.0 |
| 2       | LOG      | 220.0 - 225.0 |
| 3       | LOG      | 225.0 - 230.0 |
| 4       | LOG      | 230.0 - 235.0 |
| 5       | LOG      | 235.0 - 240.0 |
| 6       | LOG      | 240.0 - 245.0 |
| 7       | LOG      | 245.0 - 250.0 |
| 8       | LOG      | 250.0 - 255.0 |
| 9       | LOG      | 255.0 - 260.0 |
| 10      | LOG      | 260.0 - 265.0 |
| 11      | LOG      | 265.0 - 270.0 |
| 12      | LOG      | 270.0 - 275.0 |
| 13      | LOG      | 275.0 - 280.0 |
| 14      | LOG      | 280.0 - 285.0 |
| 15      | LOG      | 285.0 - 290.0 |
| 16      | LOG      | 290.0 - 295.0 |
| 17      | LOG      | 295.0 - 300.0 |
| 18      | LOG      | 300.0 - 305.0 |
| 19      | LOG      | 305.0 - 310.0 |
| 20      | LOG      | 310.0 - 315.0 |
| 21      | LOG      | 315.0 - 320.0 |
| 22      | LOG      | 320.0 - 325.0 |
| 23      | LOG      | 325.0 - 330.0 |
| 24      | LOG      | 330.0 - 335.0 |
| 25      | LOG      | 335.0 - 340.0 |
| 26      | LOG      | 340.0 - 345.0 |
| 27      | LOG      | 345.0 - 350.0 |

#### Core

| Core No. | Core Depth | Core Interval | Core Description |
|----------|------------|---------------|------------------|
| 1        | 225.0      | 225.0 - 230.0 | CHALK            |
| 2        | 230.0      | 230.0 - 235.0 | CHALK            |
| 3        | 235.0      | 235.0 - 240.0 | CHALK            |
| 4        | 240.0      | 240.0 - 245.0 | CHALK            |
| 5        | 245.0      | 245.0 - 250.0 | CHALK            |
| 6        | 250.0      | 250.0 - 255.0 | CHALK            |
| 7        | 255.0      | 255.0 - 260.0 | CHALK            |
| 8        | 260.0      | 260.0 - 265.0 | CHALK            |
| 9        | 265.0      | 265.0 - 270.0 | CHALK            |
| 10       | 270.0      | 270.0 - 275.0 | CHALK            |
| 11       | 275.0      | 275.0 - 280.0 | CHALK            |
| 12       | 280.0      | 280.0 - 285.0 | CHALK            |
| 13       | 285.0      | 285.0 - 290.0 | CHALK            |
| 14       | 290.0      | 290.0 - 295.0 | CHALK            |
| 15       | 295.0      | 295.0 - 300.0 | CHALK            |
| 16       | 300.0      | 300.0 - 305.0 | CHALK            |
| 17       | 305.0      | 305.0 - 310.0 | CHALK            |
| 18       | 310.0      | 310.0 - 315.0 | CHALK            |
| 19       | 315.0      | 315.0 - 320.0 | CHALK            |
| 20       | 320.0      | 320.0 - 325.0 | CHALK            |
| 21       | 325.0      | 325.0 - 330.0 | CHALK            |
| 22       | 330.0      | 330.0 - 335.0 | CHALK            |
| 23       | 335.0      | 335.0 - 340.0 | CHALK            |
| 24       | 340.0      | 340.0 - 345.0 | CHALK            |
| 25       | 345.0      | 345.0 - 350.0 | CHALK            |

#### Pressure points (MD)

| Run No. | Pressure Point | Pressure | Depth | Temp |
|---------|----------------|----------|-------|------|
| 1       | 225.0          | 103.0    | 225.0 | 27.0 |
| 2       | 230.0          | 103.0    | 230.0 | 27.0 |
| 3       | 235.0          | 103.0    | 235.0 | 27.0 |
| 4       | 240.0          | 103.0    | 240.0 | 27.0 |
| 5       | 245.0          | 103.0    | 245.0 | 27.0 |
| 6       | 250.0          | 103.0    | 250.0 | 27.0 |
| 7       | 255.0          | 103.0    | 255.0 | 27.0 |
| 8       | 260.0          | 103.0    | 260.0 | 27.0 |
| 9       | 265.0          | 103.0    | 265.0 | 27.0 |
| 10      | 270.0          | 103.0    | 270.0 | 27.0 |
| 11      | 275.0          | 103.0    | 275.0 | 27.0 |
| 12      | 280.0          | 103.0    | 280.0 | 27.0 |
| 13      | 285.0          | 103.0    | 285.0 | 27.0 |
| 14      | 290.0          | 103.0    | 290.0 | 27.0 |
| 15      | 295.0          | 103.0    | 295.0 | 27.0 |
| 16      | 300.0          | 103.0    | 300.0 | 27.0 |
| 17      | 305.0          | 103.0    | 305.0 | 27.0 |
| 18      | 310.0          | 103.0    | 310.0 | 27.0 |
| 19      | 315.0          | 103.0    | 315.0 | 27.0 |
| 20      | 320.0          | 103.0    | 320.0 | 27.0 |
| 21      | 325.0          | 103.0    | 325.0 | 27.0 |
| 22      | 330.0          | 103.0    | 330.0 | 27.0 |
| 23      | 335.0          | 103.0    | 335.0 | 27.0 |
| 24      | 340.0          | 103.0    | 340.0 | 27.0 |
| 25      | 345.0          | 103.0    | 345.0 | 27.0 |
| 26      | 350.0          | 103.0    | 350.0 | 27.0 |

#### Log Log

| Run No. | Log Type | Log Interval  |
|---------|----------|---------------|
| 1       | LOG      | 103.0 - 220.0 |
| 2       | LOG      | 220.0 - 225.0 |
| 3       | LOG      | 225.0 - 230.0 |
| 4       | LOG      | 230.0 - 235.0 |
| 5       | LOG      | 235.0 - 240.0 |
| 6       | LOG      | 240.0 - 245.0 |
| 7       | LOG      | 245.0 - 250.0 |
| 8       | LOG      | 250.0 - 255.0 |
| 9       | LOG      | 255.0 - 260.0 |
| 10      | LOG      | 260.0 - 265.0 |
| 11      | LOG      | 265.0 - 270.0 |
| 12      | LOG      | 270.0 - 275.0 |
| 13      | LOG      | 275.0 - 280.0 |
| 14      | LOG      | 280.0 - 285.0 |
| 15      | LOG      | 285.0 - 290.0 |
| 16      | LOG      | 290.0 - 295.0 |
| 17      | LOG      | 295.0 - 300.0 |
| 18      | LOG      | 300.0 - 305.0 |
| 19      | LOG      | 305.0 - 310.0 |
| 20      | LOG      | 310.0 - 315.0 |
| 21      | LOG      | 315.0 - 320.0 |
| 22      | LOG      | 320.0 - 325.0 |
|         |          |               |