

**Well: 30/7-8**

Scale: 1500'

Phase 1: Nov 88, 1988 Phase 2: Sept 22, 1988  
 Phase 3: March 90, 1990 Phase 4: Nov 22, 1988  
 Phase 5: April 93, 1993 Phase 6: Jan 30, 1992  
 Phase 7: Nov 93, 1993 Phase 8: Feb 22, 1988

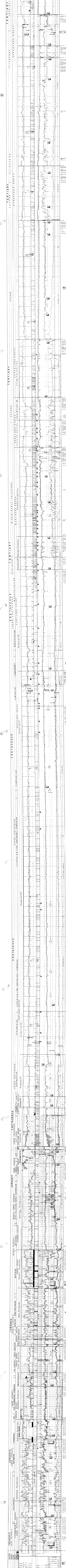
**Geographic Data:**  
 Location: P1  
 UTM Zone: 29  
 UTM Easting: 430070  
 UTM Northing: 6250000  
 Grid Zone Designation: 29QUC  
 Phase: 430070 Phase 2: 480000  
 UTM Easting: 430070 Phase 2: 480000

Log Run Phase	DATE	LOGGERS	WELL	DEPTH (m)	VELOCITY (m/s)	DEPTH (m)	VELOCITY (m/s)
1	1988-11-08	...	30/7-8	0 - 200	...	0 - 200	...
2	1988-09-22	...	30/7-8	0 - 200	...	0 - 200	...
3	1990-03-09	...	30/7-8	0 - 200	...	0 - 200	...
4	1988-11-22	...	30/7-8	0 - 200	...	0 - 200	...
5	1993-04-09	...	30/7-8	0 - 200	...	0 - 200	...
6	1992-01-30	...	30/7-8	0 - 200	...	0 - 200	...
7	1993-11-09	...	30/7-8	0 - 200	...	0 - 200	...
8	1988-02-22	...	30/7-8	0 - 200	...	0 - 200	...

Log Run Phase	DATE	LOGGERS	WELL	DEPTH (m)	VELOCITY (m/s)	DEPTH (m)	VELOCITY (m/s)
1	1988-11-08	...	30/7-8	200 - 400	...	200 - 400	...
2	1988-09-22	...	30/7-8	200 - 400	...	200 - 400	...
3	1990-03-09	...	30/7-8	200 - 400	...	200 - 400	...
4	1988-11-22	...	30/7-8	200 - 400	...	200 - 400	...
5	1993-04-09	...	30/7-8	200 - 400	...	200 - 400	...
6	1992-01-30	...	30/7-8	200 - 400	...	200 - 400	...
7	1993-11-09	...	30/7-8	200 - 400	...	200 - 400	...
8	1988-02-22	...	30/7-8	200 - 400	...	200 - 400	...

**Legend:**

- Geological Formations
- Wellbore
- Production
- Completion
- Flow Control
- Other



**CORE DESCRIPTIONS**

**PHASE I**

Core No.	Depth (m)	Description
1	0 - 10	...
2	10 - 20	...
3	20 - 30	...
4	30 - 40	...
5	40 - 50	...
6	50 - 60	...
7	60 - 70	...
8	70 - 80	...
9	80 - 90	...
10	90 - 100	...
11	100 - 110	...
12	110 - 120	...
13	120 - 130	...
14	130 - 140	...
15	140 - 150	...
16	150 - 160	...
17	160 - 170	...
18	170 - 180	...
19	180 - 190	...
20	190 - 200	...
21	200 - 210	...
22	210 - 220	...
23	220 - 230	...
24	230 - 240	...
25	240 - 250	...
26	250 - 260	...
27	260 - 270	...
28	270 - 280	...
29	280 - 290	...
30	290 - 300	...
31	300 - 310	...
32	310 - 320	...
33	320 - 330	...
34	330 - 340	...
35	340 - 350	...
36	350 - 360	...
37	360 - 370	...
38	370 - 380	...
39	380 - 390	...
40	390 - 400	...

**PHASE II**

Core No.	Depth (m)	Description
41	400 - 410	...
42	410 - 420	...
43	420 - 430	...
44	430 - 440	...
45	440 - 450	...
46	450 - 460	...
47	460 - 470	...
48	470 - 480	...
49	480 - 490	...
50	490 - 500	...
51	500 - 510	...
52	510 - 520	...
53	520 - 530	...
54	530 - 540	...
55	540 - 550	...
56	550 - 560	...
57	560 - 570	...
58	570 - 580	...
59	580 - 590	...
60	590 - 600	...