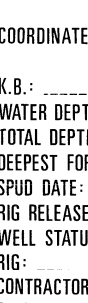


COMPLETION LOG



7120/8-2 COMPLETION LOG Scale 1:500

COORDINATES: 71°20'15,72" N  
20°27'57,61" E

K.B.: 25 m

WATER DEPTH: 245 m (MSL)

TOTAL DEPTH: 2590 m (RKB)

DEEPEST FORM. PEN. "UPPER TRIASSIC"

SPOD DATE: 15 APRIL 1992

RIG RELEASE DATE: 30 JULY 1992

WELL STATUS: PLUGGED AND ABANDONED

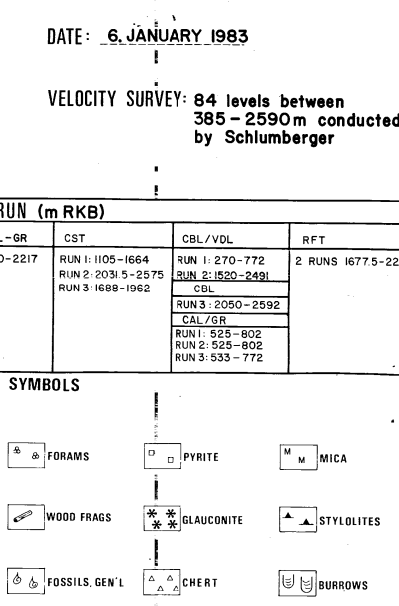
NEPTUNO NORDBANG

CONTRACTOR: ROSS DRILLING Co.

GEOLOGISTS: S. BJERKENES, M. HELLE, C. BAKER

PREPARED BY: MAGNE ASLÅGSEN

DATE: 6. JANUARY 1993



CASING DATA: 30" at 332 m  
7 1/2" at 736 m  
13 1/2" at 792 m, 1,65 g/cc  
9 1/2" at 1675 m, 1,72 g/cc  
7" LINER at 2589 m

FORMATION INTEGRITY TEST

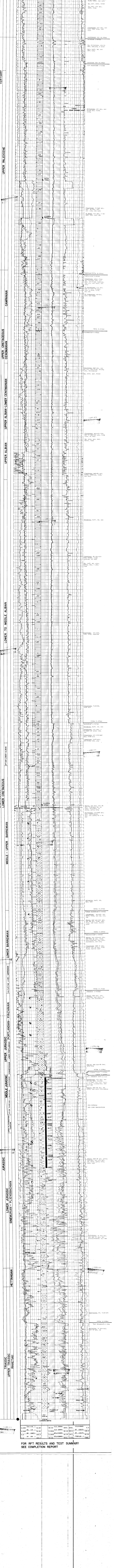
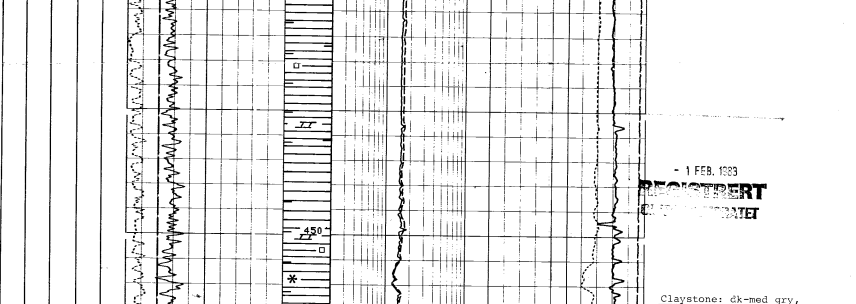
VELOCITY SURVEY: 84 levels between 385 - 2590 m conducted by Schlumberger

LOGS RUN (m RKB)

REF/COM-OR-SP-CAL	LOT-OR-CAL	HOT	DLL-MFPL-OR	CBT	CBL/VCL	RFT
RUN 1 332-790	RUN 1 792-1682	RUN 1 332-790.5	RUN 1 2000-2217	RUN 1 105-1664	RUN 1 270-772	RUN 1 675-222
RUN 2 792-1682	RUN 2 1682-2050	RUN 2 792-1682.0	RUN 2 2000-2217	RUN 2 200-327	RUN 2 250-248	
RUN 3 1682-2050	RUN 3 2050-2590	RUN 3 1682-2050.0	RUN 3 2000-2217	RUN 3 1682-1982	RUN 3 250-248	
RUN 4 1675-2219	RUN 4 2050-2590	RUN 4 1675-2219.0	RUN 4 2000-2217	RUN 4 1675-1982	RUN 4 250-248	
RUN 5 2000-2590	RUN 5 2000-2590	RUN 5 2000-2590.0	RUN 5 2000-2217	RUN 5 1675-1982	RUN 5 250-248	

LITHOLOGIC SYMBOLS

SAND	LIMESTONE	ANHYDRITE	FORAMS	PIRYTE	MICA
SILTSTONE	CHALK	LOCAL LIGNITE	WOOD FRAGS	RELICLAUCITE	STYLLITES
CLAY	SOLONCHITE	TUFF	FOSSILS GEN'L	CHEERT	BURROWS
SHALE	MARL	SALT	SHELL FRAGS	SIDERITE	FRACTURES



FOR RFT RESULTS AND TEST SUMMARY SEE COMPLETION REPORT