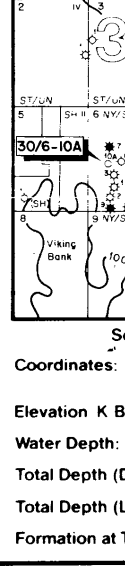
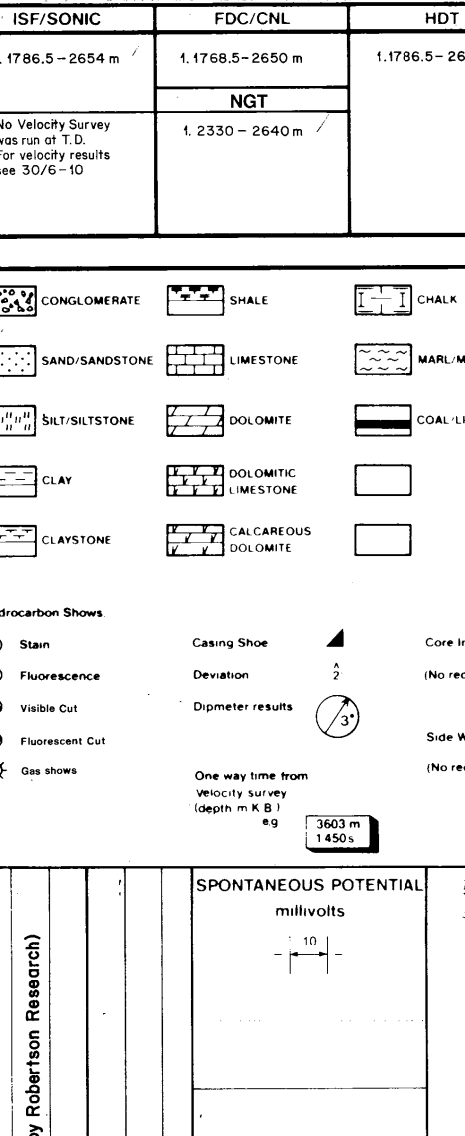


COMPLETION LOG



Completion log
 Scale: 1:500
Well: 30/6-10A

Norsk Hydro
 Oslo, Norway



Country: Norway
 Licence: 053
 Owners: Norsk Hydro/Statol/Eif/Mobil
 Field: Oseberg
 Started operations: December 2, 198
 Started drilling formation: December 13, 1982
 Reached Total Depth: January 13, 1983
 Completed: March 4, 1983
 Well Status: P&A with oil and gas discovered in Middle Jurassic Brent Group sandstones
 Rig: Treasure Scout
 Contractor: With Wilhelmsen
 Mudlogging Company: Exploration Logging
 Logging Company: Schlumberger
 Geologists: M. Henderson, D.E. Nilsen, J. K. Ailcock
 Prepared by: J.H. Skogen
 Date: 17/8 - 83

Casing Records:

| | |
|---------|----------|
| 30" | at 219m |
| 13 3/8" | at 949m |
| 10 3/8" | at 2138m |
| 9 5/8" | at 2652m |

Comments: Well sidetracked from 1788m through window in 13 3/8" csg from 1788-1903m. A biostratigraphical analysis was only done from top Jurassic and down to T.D.

Logs Run

| ISF/SONIC | FDC/CNL | HDT | DL/MSFL | RFT |
|--------------------|--------------------|--------------------|----------------|--|
| 1.1786.5 - 2654.0m | 1.1768.5 - 2650.0m | 1.1786.5 - 2654.0m | 1.2340 - 2648m | 1.2485 - 2607m 2. 2605.5m 3. 2592m |

Legend

| | | | | | |
|---------------|------------------|----------------|-------------|---------------------------|--------------|
| CONGLOMERATE | SHALE | SHALE | ARGILLITE | SANDY VERY SANDY SLIGHTLY | Chert |
| SANDSTONE | LIMESTONE | MARL/MARLSTONE | SALT | SILT VERY SILTY SLIGHTLY | Glaucinite |
| SILT/SLTSTONE | DOLOMITE | COAL/LIGHT | GYP/SUM | ANGULACEOUS | Mica |
| CLAY | CALICHE | | TUFF | | Pyrite |
| CLAYSTONE | CALICHE/DOLOMITE | | CONCRETE | | Microfossils |
| | | | EXTR. INTR. | | Microfossils |

