



PHILIPS PETROLEUM NORWAY
GEOLOGY FILE
ROUTINE CORE ANALYSIS

WELL: 7/11-7

DATE: SEPTEMBER 1983 .

D-21

— CONOCO NORWAY INC. —
— CENTRAL OFFICE —
— LIBRARY —

CORE STUDY 7/11-7

CORE NO.	CORE DEPTH	CORRELATED CPI DEPTH
1	14923'-14959'6"	14922'
2	14961'-14966'	14956'
3	14966'-14995'4"	14963'
4	15012'-15051'9"	15012'
5	15052'-15103'6"	15051'
6	15105'-15152'3"	15104'

COMPANY : PHILLIPS
 WELL : 7/11-7
 FIELD : 7/11
 STATE : NORWAY

FINAL REPORT

PAGE: 1

CORE NO.: 1

DATE: SEPTEMBER 1983



Plug No.	Depth (feet)	Permeability (mD),				Porosity (%)		Pore saturation		Grain dens. g/cc	Formation Description
		K _a	K _l	K _a	K _l	He	Sum.	S _o	S _w		
	14923'0"										
1	14923'4"	1.9	1.5	0.21	0.16	16.2	12.3	4.1	14.3	2.64	Sst.BrnsH-gry.VF-gr.Sbang.VW-cmt.w/Mic.
2	14926'0"	1.6	1.2	0.157	0.12	16.1	11.5	6.6	17.6	2.64	A.A.W/srt.w/C.
3	14927'0"	13.7	12.1	4.8	4.1	18.2				2.64	A.A.F-gr.
4	14928'0"	9.1	7.9	2.2	1.7	20.0	14.4	8.5	15.3	2.63	A.A.
5	14929'0"	11.3	10.0	3.5	3.0	19.1				2.63	A.A.
6	14930'0"	0.72	0.56	0.42	0.32	16.0	12.1	10.4	10.4	2.64	A.A.VF-gr.
7	14931'0"	2.2	1.7	1.9	1.5	17.7				2.63	A.A.
8	14932'0"	6.8	5.9	2.7	2.1	17.7	9.9	5.2	7.8	2.64	A.A.
9	14933'0"	0.44	0.34	1.2	0.97	16.4				2.68	A.A.w/Calc.
10	14934'0"	0.31	0.23	0.125	0.09	14.9	12.6	16.7	27.1	2.68	A.A.
11	14937'0"	0.101	0.07	1.7	1.3	13.6	10.0	1.3	10.3	2.68	A.A.
12	14938'0"	0.38	0.29	0.195	0.15	15.4				2.66	A.A.
13	14939'0"	0.157	0.12	0.52	0.40	14.1	7.9	6.6	6.6	2.67	A.A.
14	14940'0"	0.51	0.40	3.3	2.8	18.0				2.68	A.A.
15	14941'0"	5.9	5.0	0.88	0.68	19.3	17.0	17.2	15.8	2.66	A.A.
16	14942'0"	0.40	0.31	0.22	0.16	14.0				2.67	A.A.
17	14943'0"	0.35	0.26	0.073	0.05	13.5	15.5	11.4	27.6	2.66	A.A.
18	14944'0"	0.052	0.04	0.042	0.03	9.0				2.78	A.A.Calc-mtrx.
19	14946'0"	0.052	0.04	0.043	0.03	9.1	4.6	0	67.3	2.77	A.A.
20	14947'0"	0.033	0.02	0.04	0.03	8.2				2.80	A.A.
21	14948'0"	1.5	1.2	0.078	0.06	15.6	5.9	29.5	29.5	2.64	A.A.w/o Calc.
22	14949'0"	1.5	1.2	5.0	4.3	16.7				2.64	A.A.
23	14950'0"	3.9	3.3	4.8	4.1	19.0	12.4	5.9	5.9	2.65	A.A.
24	14951'0"	4.0	3.4	0.23	0.18	19.1				2.64	A.A.
25	14952'0"	1.3	1.0	0.59	0.46	17.6	14.6	17.0	17.0	2.63	A.A.Calc-mtrx.
26	14953'0"	0.016	0.01	0.25	0.19	5.8				2.69	A.A.
27	14954'0"	0.067	0.05	0.043	0.03	7.7	5.1	11.1	38.7	2.70	A.A.

COMPANY : PHILLIPS
 WELL : 7/11-7
 FIELD : 7/11
 STATE : NORWAY

FINAL REPORT

PAGE: 1

CORE NO.: 4

DATE: SEPTEMBER 1983



Plug No.	Depth (feet)	Permeability (mD),				Porosity (%)		Pore saturation		Grain dens. g/cc	Formation Description
		K _a	K _l	K _a	K _l	He	Sum.	S _o	S _w		
	15012'0"										
82	15012'0"	nmp		0.060	0.04	11.0	6.1	0	52.5	2.67	Sst.Gnsh-gry.VF-gr.Sbang.VW-cmt.w/Mic.
83	15013'0"	0.043	0.03	0.095	0.07	9.5				2.66	A.A.W-srt.
84	15014'0"	0.048	0.03	0.044	0.03	9.8	10.3	5.2	46.4	2.66	A.A.
85	15015'0"	0.049	0.04	0.046	0.03	10.8				2.68	A.A.
86	15016'0"	0.039	0.03	0.030	0.02	9.5	8.2	0	52.6	2.66	A.A.
87	15017'0"	0.029	0.02	0.039	0.03	8.0				2.71	A.A.w/Calc.
88	15018'0"	0.033	0.02	0.039	0.03	4.5	5.1	0	68.5	2.67	A.A.
89	15019'0"	0.047	0.03	0.098	0.07	8.9				2.67	A.A.
90	15020'0"	0.023	0.02	0.023	0.02	4.4	1.9	0	62.4	2.76	A.A.Calc-mtrx.w/Sid.
91	15021'0"	0.018	0.01	0.029	0.02	3.6				2.78	A.A.
92	15022'0"	0.147	0.11	0.021	0.02	11.4	1.5	0	19.4	2.65	A.A.w/o Calc.Sid.
93	15023'0"	0.026	0.02	0.027	0.02	4.2				2.77	A.A.Calc-mtrx.w/Sid.
94	15024'0"	0.067	0.05	0.030	0.02	5.6	5.4	0	53.9	2.76	A.A.
95	15025'0"	0.032	0.02	0.072	0.05	5.2				2.68	A.A.w/o Calc.Sid.
96	15026'0"	0.023	0.02	0.056	0.04	6.5	4.0	0	72.9	2.78	A.A.Gry.w/Calc.Sid.Cl.
97	15027'0"	0.045	0.03	0.124	0.09	10.4				2.76	A.A.
98	15029'0"	0.046	0.03	0.037	0.03	10.6	4.8	0	44.7	2.67	A.A.GrnsH-gry.w/o Cl.Calc.Sid.
99	15030'0"	0.35	0.27	0.28	0.22	11.3				2.66	A.A.
100	15031'0"	0.016	0.01	0.011	0.008	2.6	6.1	0	46.5	2.76	A.A.Calc-mtrx.
101	15032'0"	0.068	0.05	0.014	0.01	6.8				2.71	A.A.
102	15033'0"	0.30	0.23	0.27	0.21	10.4	7.9	0	16.7	2.68	A.A.F-gr.W-cmt.w/o Calc-mtrx.w/Calc.
103	15034'00"	0.212	0.16	0.200	0.15	14.2				2.67	A.A.
104	15035'0"	0.27	0.20	0.24	0.18	11.7	11.7	0	38.4	2.65	A.A.
105	15037'0"	0.42	0.32	nmp		5.2				2.73	Sst.Rd.VF-gr.SbrnDD.VW-cmt.ferr.w/Calc.
106	15038'0"	0.204	0.15	0.074	0.05	3.8	4.3	0	82.2	2.75	Sst.Gn.VF-gr.SbrnDD.VW-cmt.w/Calc.Sid.
107	15039'0"	0.023	0.02	0.026	0.02	3.0				2.79	A.A.W-srt.Calc-mtrx.
108	15040'0"	0.024	0.02	0.025	0.02	3.7	1.8	0	52.3	2.77	A.A.
109	15041'0"	0.028	0.02	0.049	0.04	4.3				2.71	A.A.

COMPANY : PHILLIPS
 WELL : 7/11-7
 FIELD : 7/11
 STATE : NORWAY

FINAL REPORT

PAGE: 2

CORE NO.: 4 (cont.)

DATE: SEPTEMBER 1983



Plug No.	Depth (feet)	Permeability (mD),				Porosity (%)		Pore saturation		Grain dens. g/cc	Formation Description
		horizontal K _a	K ₁	vertical K _a	K ₁	He	Sum.	S _o	S _w		
110	15042'0"	0.027	0.02	0.037	0.03	7.0	2.2	0	12.8	2.67	A.A.Gnsh-gry.w/o Calc-mtrx.w/Calc.
111	15043'0"	0.046	0.03	0.045	0.03	10.6				2.68	A.A.
112	15044'0"	nmp		0.034	0.02	5.5	2.3	0	50.0	2.79	A.A.Calc-mtrx.fis.w/Sid.
113	15045'0"	0.089	0.07	0.083	0.06	10.3				2.66	A.A.w/o Calc.Sid.fis.
114	15046'0"	0.055	0.04	0.064	0.05	10.2	5.6	0	77.8	2.67	A.A.w/Calc.
115	15047'0"	0.069	0.05	0.072	0.05	10.7				2.66	A.A.
116	15049'0"	0.025	0.02	0.044	0.03	4.6	2.3	0	50.1	2.68	A.A.
117	15050'0"	0.031	0.02	0.031	0.02	3.4				2.68	A.A.
118	15051'0" 15051'9"	0.103	0.08	0.086	0.06	11.6	5.6	0	9.6	2.65	A.A.

COMPANY : PHILLIPS
 WELL : 7/11-7
 FIELD : 7/11
 STATE : NORWAY

FINAL REPORT

PAGE: 1

CORE NO.: 5

DATE: SEPTEMBER 1983



Plug No.	Depth (feet)	Permeability (mD),				Porosity (%)		Pore saturation		Grain dens. g/cc	Formation Description
		horizontal K _a	K ₁	vertical K _a	K ₁	He	Sum.	S _o	S _w		
	15052'0"										
36	15053'0"	0.029	0.02	0.025	0.02	10.7	5.0	0	26.7	2.66	Sst.Lt-gry.VF-gr.Sbang.VW-cmt.w/Mic.
37	15054'0"	0.038	0.03	0.027	0.02	11.1				2.65	A.A.W-srt.
38	15055'0"	0.032	0.02	0.032	0.02	11.2	6.1	0	44.2	2.66	A.A.
39	15056'0"	0.017	0.01	0.034	0.03	8.9				2.66	A.A.
40	15057'0"	0.014	0.01	0.015	0.01	6.4	5.8	0	51.8	2.70	A.A.GrnsH-gry.w/Calc.
41	15058'0"	0.017	0.01	0.016	0.01	8.0				2.68	A.A.
42	15059'0"	0.026	0.02	0.032	0.02	11.6	5.7	0	52.3	2.66	A.A.
43	15060'0"	0.019	0.01	0.026	0.02	10.4				2.69	A.A.
44	15062'0"	0.012	0.009	0.014	0.01	8.8	6.7	0	73.7	2.66	A.A.
45	15063'0"	0.079	0.06	0.017	0.01	6.3				2.69	A.A.
46	15064'0"	0.062	0.05	0.019	0.01	9.2	6.3	0	65.8	2.66	A.A.
47	15065'0"	0.020	0.01	0.015	0.01	5.8				2.73	A.A.w/Sid.
48	15066'0"	0.45	0.35	0.014	0.010	8.0	5.8	0	72.4	2.67	A.A.w/o Sid.
49	15067'0"	0.031	0.02	0.014	0.01	6.9				2.69	A.A.
50	15068'0"	0.022	0.02	0.028	0.02	10.3	5.4	0	45.4	2.69	A.A.
51	15069'0"	0.092	0.07	0.033	0.02	10.2				2.67	A.A.
52	15070'0"	0.037	0.03	0.024	0.02	10.7	4.1	0	26.7	2.68	A.A.
53	15072'0"	0.107	0.08	0.14	0.10	12.2	4.7	0	28.4	2.66	A.A.
54	15073'0"	0.058	0.04	0.072	0.05	14.0				2.67	A.A.
55	15074'0"	0.133	0.10	0.119	0.09	13.4	7.6	0	14.0	2.66	A.A.
56	15075'0"	0.06	0.04	0.044	0.03	9.9				2.66	A.A.
57	15077'0"	0.011	0.008	0.009	0.006	6.1	2.9	0	29.5	2.70	A.A.w/o Calc.w/Cl.Pyr.
58	15078'0"	0.037	0.03	0.01	0.007	6.8				2.71	A.A.
59	15080'0"	0.017	0.01	0.02	0.01	7.2	3.6	0	73.9	2.76	A.A.w/o Pyr.w/Sid.Calc.
60	15082'0"	0.013	0.009	0.01	0.007	4.9				2.73	A.A.
61	15083'0"	nmp		0.011	0.008	nmp	2.2	0	54.4		A.A.fis.
62	15084'0"	0.013	0.009	0.006	0.005	5.7				2.71	A.A.

COMPANY : PHILLIPS
 WELL : 7/11-7
 FIELD : 7/11
 STATE : NORWAY

FINAL REPORT

PAGE: 1

CORE NO.: 6

DATE: SEPTEMBER 1983



Plug No.	Depth (feet)	Permeability (mD),				Porosity (%)		Pore saturation		Grain dens. g/cc	Formation Description
		K _a	K _l	K _a	K _l	He	Sum.	S _o	S _w		
	15105'0"										
136	15105'0"	1.7	1.3	1.6	1.3	12.5	10.3	0	19.9	2.65	Sst.Lt-gry.VF-gr.Sbang.W-cmt.w/Mic.
137	15106'0"	1.4	1.1	0.084	0.06	12.5				2.65	A.A.W-srt.
138	15107'0"	0.023	0.02	0.042	0.03	4.2	4.4	0	26.4	2.74	A.A.VW-cmt.Calc.
139	15108'0"	0.018	0.01	0.019	0.01	3.4				2.77	A.A.w/Pyr.C.
140	15109'0"	0.168	0.13	0.036	0.03	6.9	8.8	0	37.6	2.73	A.A.
141	15110'0"	0.022	0.02	0.019	0.01	5.2				2.75	A.A.
142	15111'0"	0.147	0.11	0.25	0.19	8.8	6.8	0	67.9	2.68	A.A.
143	15112'0"	0.068	0.05	0.031	0.02	11.6				2.65	A.A.w/o Calc.
144	15113'0"	0.049	0.04	0.037	0.03	11.2	4.1	0	6.3	2.65	A.A.
145	15114'0"	0.213	0.16	0.221	0.17	12.7				2.63	A.A.w/o Pyr.
146	15115'0"	0.021	0.02	0.014	0.010	4.0	1.5	0	58.6	2.68	A.A.Gnsh-gry.VW-cmt.w/Cl.Pyr.
147	15117'0"	3.5	3.0	0.204	0.15	12.2	10.3	0	33.0	2.64	A.A.Lt-gry.w/o Pyr.Cl.
148	15118'0"	6.0	5.2	0.059	0.46	14.6				2.63	A.A.
149	15119'0"	13.2	11.6	2.37	1.8	16.1	8.5	0	6.1	2.64	A.A.F-gr.
150	15120'0"	6.0	5.2	0.66	0.51	14.5				2.64	A.A.
151	15121'0"	16.8	15.0	6.60	5.5	15.6	12.5	0	45.7	2.64	A.A.
152	15122'0"	3.0	2.6	2.1	1.6	13.3				2.64	A.A.w/Calc.
153	15123'0"	0.21	0.16	0.022	0.02	5.3	2.0	0	90.4	2.75	Sltst.Gn.Consol.w/Calc.Mic.Pyr.
154	15124'0"	0.019	0.01	0.021	0.02	3.6				2.70	Sst.Gn.VF-gr.Sbrnrd.VW-cmt.Cl-mtrx.w/Mic
155	15126'0"	0.017	0.01	0.020	0.01	3.0	1.5	0	76.1	2.71	A.A.W-srt.w/Calc.
156	15127'0"	0.022	0.02	0.026	0.02	2.9				2.69	A.A.w/o Calc.w/Pyr.
157	15128'0"	0.026	0.02	0.036	0.03	2.8	2.1	0	82.5	2.74	A.A.w/Calc.
158	15129'0"	0.066	0.05	0.014	0.01	4.4				2.70	A.A.w/o Calc.
159	15131'0"	0.030	0.02	0.026	0.02	5.2	2.2	0	77.2	2.67	A.A.
160	15132'0"	0.25	0.19	0.151	0.11	12.2				2.64	A.A.Lt-gry.w/o Cl-mtrx.
161	15132'11"	0.23	0.18	0.132	0.10	9.6	5.6	0	39.3	2.64	A.A.
162	15134'0"	0.65	0.50	0.69	0.54	11.6				2.63	A.A.w/o Pyr.
163	15135'0"	2.1	1.6	0.75	0.58	12.7	8.8	0	26.7	2.63	A.A.

COMPANY : PHILLIPS
 WELL : 7/11-7
 FIELD : 7/11
 STATE : NORWAY

FINAL REPORT

PAGE: 2

CORE NO.: 6 (cont.)

DATE: SEPTEMBER 1983



Plug No.	Depth (feet)	Permeability (mD),				Porosity (%)		Pore saturation		Grain dens. g/cc	Formation Description
		horizontal K _a	K _l	vertical K _a	K _l	He	Sum.	S _o	S _w		
164	15136'0"	0.138	0.10	0.094	0.07	12.7				2.66	A.A.
165	15137'0"	0.094	0.07	0.098	0.07	11.5	9.7	0	43.7	2.64	A.A.
166	15139'0"	0.172	0.13	0.091	0.07	12.0	10.9	0	61.0	2.65	A.A.
167	15140'0"	0.155	0.12	0.137	0.10	12.2				2.65	A.A.
168	15141'0"	0.098	0.07	0.126	0.09	11.1	6.0	0	17.5	2.65	A.A.
169	15142'0"	0.24	0.18	0.094	0.07	13.2				2.65	A.A.
170	15143'0"	0.076	0.06	0.057	0.04	11.1	8.8	0	30.0	2.68	A.A.w/Pyr.
171	15144'0"	0.117	0.09	0.132	0.10	13.0				2.65	A.A.w/o Pyr.
172	15145'0"	0.145	0.11	0.191	0.14	13.1	11.6	0	47.6	2.65	A.A.
173	15146'0"	0.059	0.04	0.212	0.16	10.5				2.66	A.A.
174	15147'0"	0.064	0.05	0.062	0.05	11.2	8.1	0	51.2	2.68	A.A.w/Calc.
175	15148'0"	0.079	0.06	0.056	0.04	11.0				2.69	A.A.
176	15150'0"	0.067	0.05	0.028	0.02	10.8	8.8	0	51.8	2.66	A.A.w/o Calc.
177	15151'0" 15152'3"	1.7	1.3	2.9	2.0	14.8				2.64	A.A.

COMPANY: PHILLIPS

FIELD: 7/11

FILE:

WELL: 7/11-7

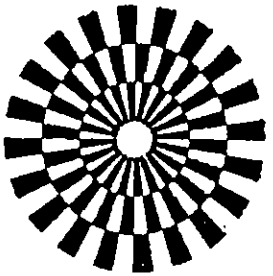
COUNTY:

DATE: SEP. 1983

LOCATION:

STATE: NORWAY

ELEV.:



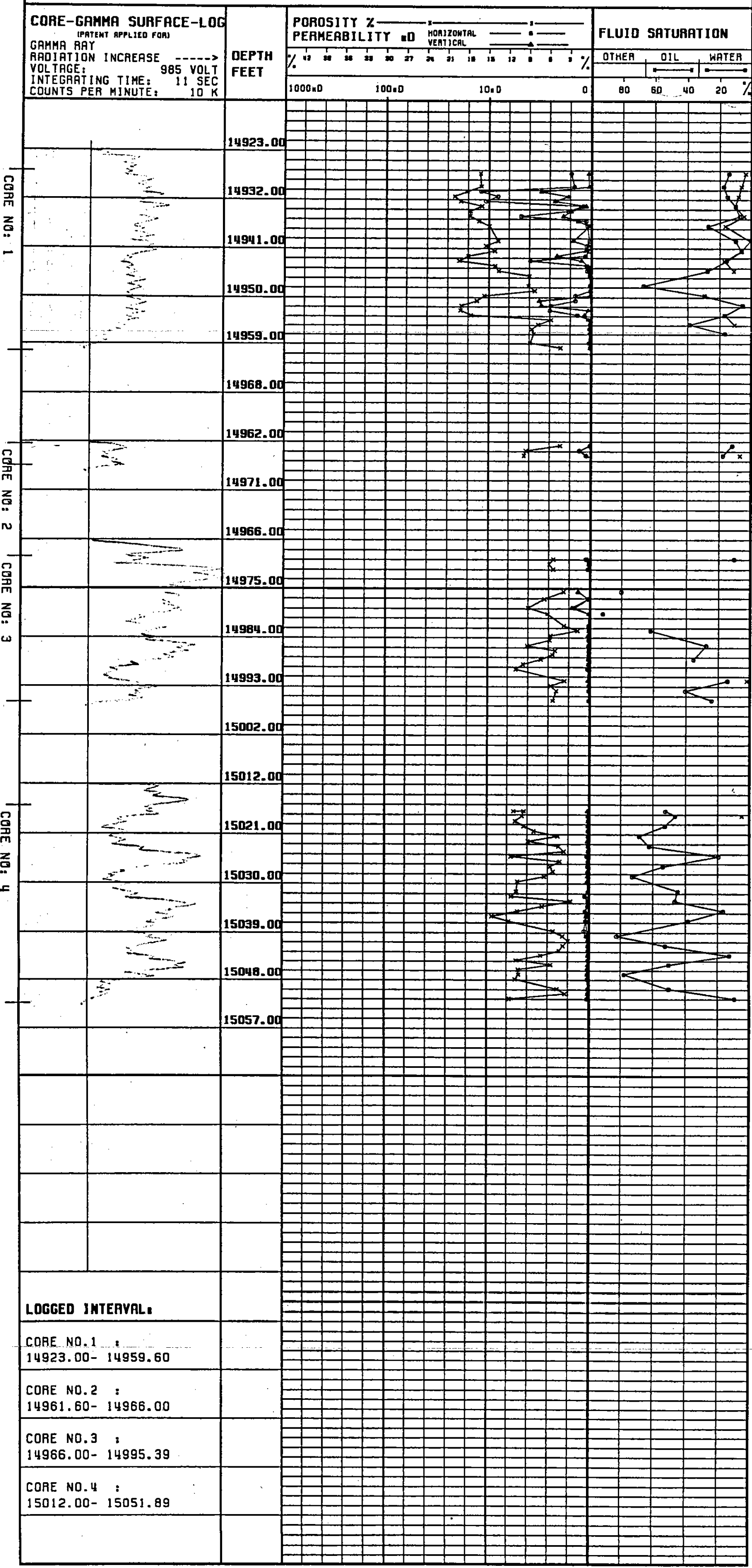
CORE GRAPH

7/11-7
GEOLOGICAL NORWAY IN
GEN. FILES
LIBRARY
D-21

THESE ANALYSES, OPINIONS OR INTERPRETATIONS ARE BASED ON OBSERVATIONS AND MATERIAL SUPPLIED BY THE CLIENT TO WHOM, FOR WHOME EXCLUSIVE AND CONFIDENTIAL USE, THIS REPORT IS MADE. THE INTERPRETATIONS OR OPINIONS EXPRESSED REPRESENT THE BEST JUDGMENT OF GECO LABORATORIES AND ITS OFFICERS AND EMPLOYEES.

GECO
GEOPHYSICAL COMPANY
OF NORWAY A.S.

VERTICAL SCALE: 1:200 **LABORATORY**



CORE NO: 1

CORE NO: 2

CORE NO: 3

CORE NO: 4

COMPANY: PHILLIPS

FIELD: 7/11

FILE:

WELL: 7/11-7

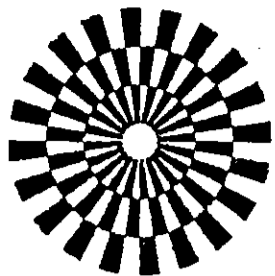
COUNTY:

DATE: SEP. 1983

LOCATION:

STATE: NORWAY

ELEV.:



CORE GRAPH

7/11-7
- CONOCO NORWAY INC. -
CENTRAL FILES -
LIBRARY -
D-21

THESE ANALYSES, OPINIONS OR INTERPRETATIONS ARE BASED ON OBSERVATIONS AND MATERIAL SUPPLIED BY THE CLIENT TO WHOM, AND FOR WHOM EXCLUSIVE AND CONFIDENTIAL, USE. THIS REPORT IS MADE. THE INTERPRETATIONS OR OPINIONS EXPRESSED REPRESENT THE BEST JUDGMENT OF GECO LABORATORIES AND ITS OFFICERS AND EMPLOYEES.

GECO
GEOPHYSICAL COMPANY
OF NORWAY A.S

VERTICAL SCALE: 1:200

LABORATORY

CORE-GAMMA SURFACE-LOG

(PATENT APPLIED FOR)
GAMMA RAY
RADIATION INCREASE ----->
VOLTAGE: 985 VOLT
INTEGRATING TIME: 11 SEC
COUNTS PER MINUTE: 10 K

DEPTH
FEET

POROSITY & PERMEABILITY

PERMEABILITY mD
HORIZONTAL
VERTICAL
%
1000mD 100mD 10mD 0

FLUID SATURATION

OTHER OIL WATER
%
80 60 40 20

CORE NO: 5

CORE NO: 6

15052.00
15061.00
15070.00
15079.00
15088.00
15097.00
15106.00
15105.00
15114.00
15123.00
15132.00
15141.00
15150.00
15159.00

LOGGED INTERVAL:

CORE NO.5 :
15052.00- 15103.60

CORE NO.6 :
15105.00- 15152.30