

FORTROLIG
statoil

GRADERINGEN GJELDER TIL

REPORT NO.

IFE/KR/F-83/055

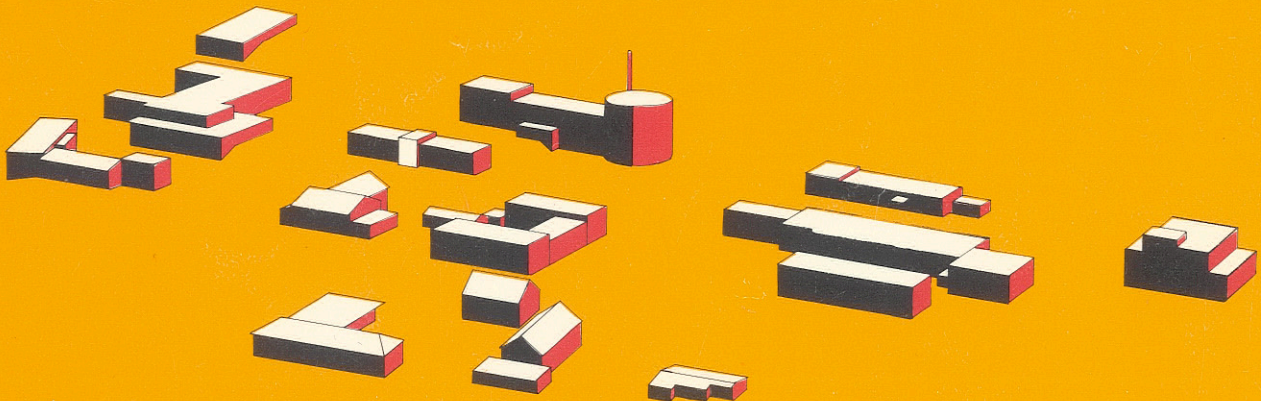
REPORT TITLE

PRELIMINARY REPORT ON THE CARBON
ISOTOPIIC DISTRIBUTION OF A NATURAL
GAS FROM WELL 6407/1-2

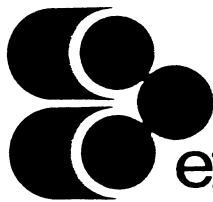
CLIENT

STATOIL

Den norske stats oljeselskap a.s.



Institute for
energy technology



Institute for energy technology

KJELLER		HALDEN		AVAILABILITY
ADDRESS	N-2007 Kjeller, Norway	N-1751 Halden, Norway		Confidential
TELEPHONE	+47 2 712560	+47 31 83100		
TELEX	76361 energ n	76335 energ n		
REPORT TYPE	REPORT NO.		DATE	
	IFE/KR/F-83/055		8.9.1983	
	REPORT TITLE		DATE OF LAST REV.	
	PRELIMINARY REPORT ON THE CARBON ISOTOPIC DISTRIBUTION OF A NATURAL GAS FROM WELL 6407/1-2		REV. NO.	
CLIENT		NUMBER OF PAGES		
STATOIL		.		
Den norske stats oljeselskap a.s.		NUMBER OF ISSUES		
CLIENT REF.		18		
SUMMARY			DISTRIBUTION	
<p>The gas components CH₄, C₂H₆, C₃H₈, i-C₄H₁₀, n-C₄H₁₀ and CO₂ have been separated from the natural gas of well 6407/1-2, and the $\delta^{13}\text{C}$-values of these components have been measured.</p> <p>The data indicate a low maturity source LOM of about 7, eq. to a vitrinite reflectance of about .5 for the gas.</p>			<p>B. Andresen E. Brevik K. Garder B. Gaudernack A. Råheim Oppdragsgiver 10 eks. Arkiv 3 eks.</p>	
KEYWORDS				
NAME		DATE		SIGNATURE
PREPARED BY	Bjørn Andresen Einar Brevik Arne Råheim	8.9.1983		<i>Arne Råheim</i>
REVIEWED BY				
APPROVED BY	Karen Garder	8.9.1983		<i>Karen Garder</i>

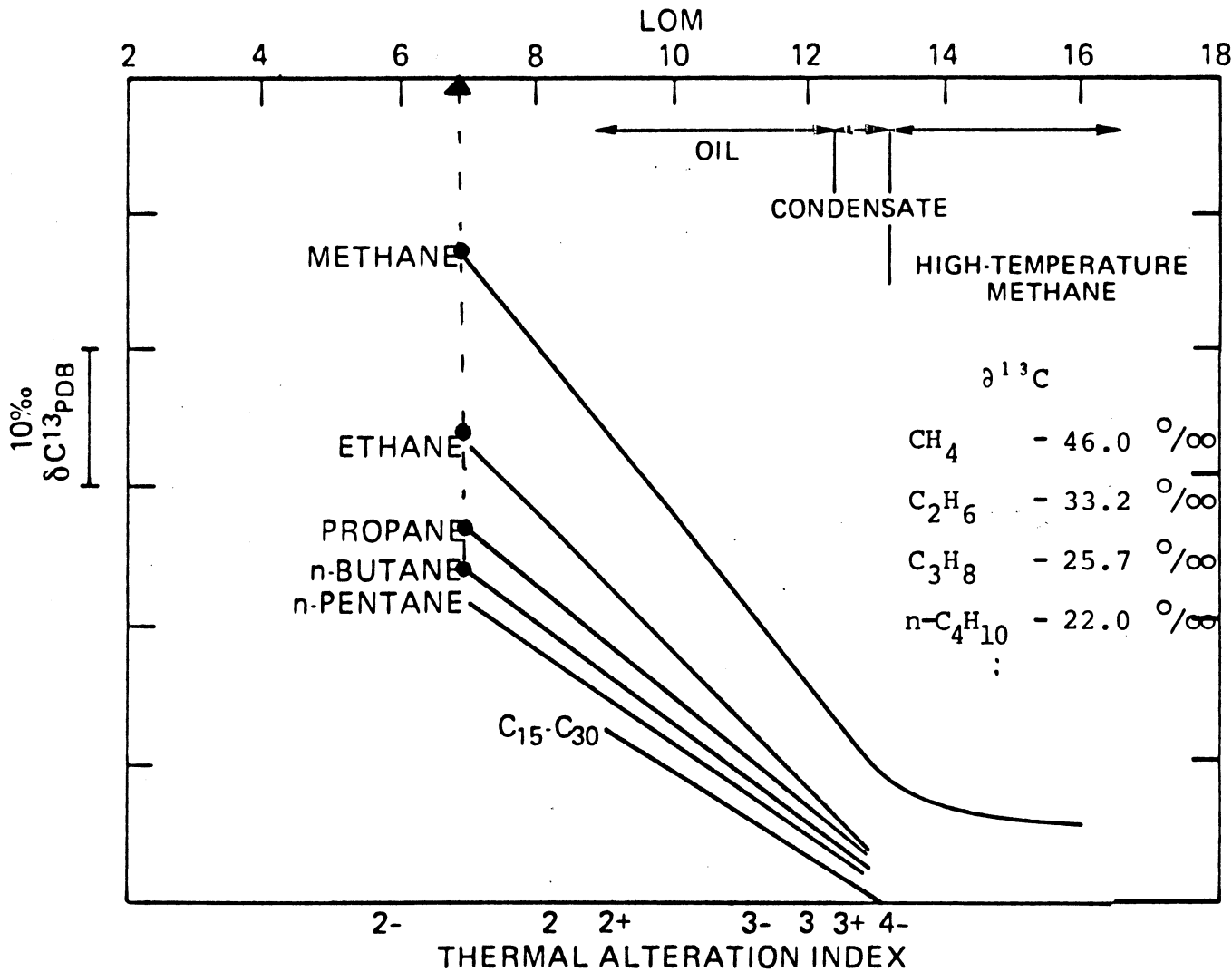
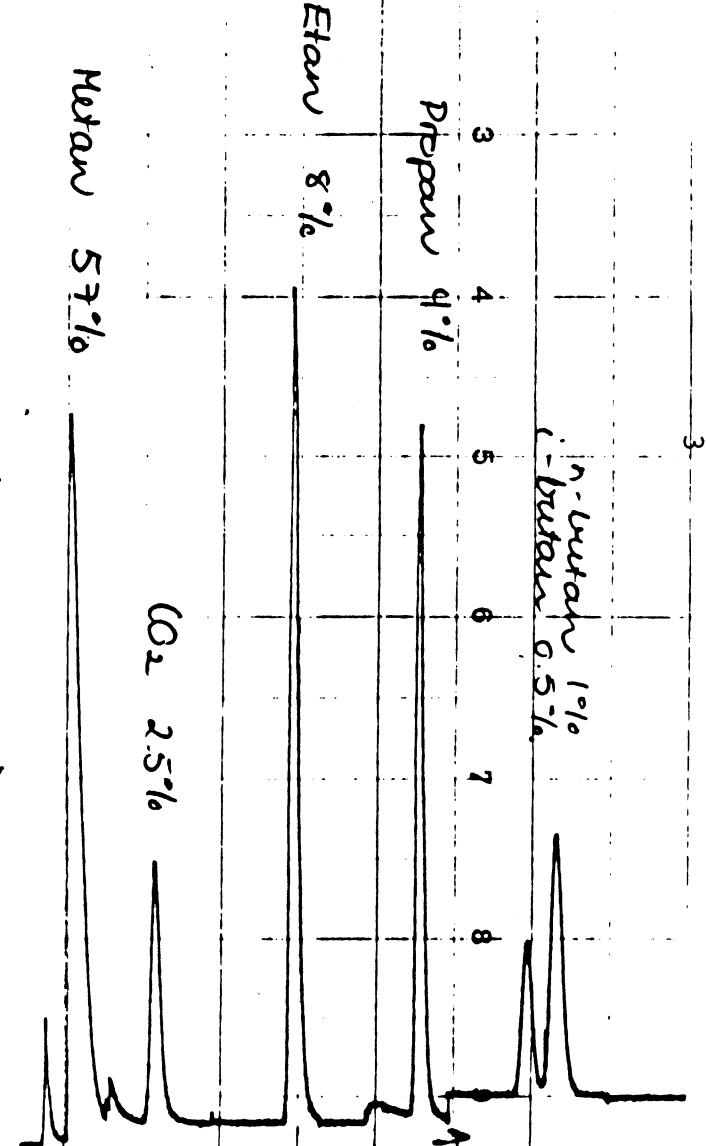


Figure 1. Carbon isotopic separations of 6407/1-2 - gas plotted on the maturity diagram (after James, 1983). A source LOM of about 7 is indicated for the gas.

The calculated carbon isotopic separations between gas component are plotted on the vertical axis using a sliding scale that is simply the algebraic difference, in parts per mil, between the isotopic compositions of the natural gas components. The scale does not possess a fixed origin, but is oriented with the more depleted $\delta^{13}\text{C}$ values at the upper end. Use of this sliding scale allows the maturity of a gas to be assessed without prior knowledge of the isotopic composition of the gas's source.

Gas chromatogram
of natural gas
6407/I-2



CONCLUSION

A low maturity source LOM of about 7, eq. to a vitrinite reflectance of about .5 is indicated for the gas. This immature gas is possibly formed at a very early stage of an oil generation.

PRELIMINARY REPORT ON THE CARBON ISOTOPIC DISTRIBUTION
OF A NATURAL GAS FROM WELL 6407/1-2.

ANALYTICAL PROCEDURE

The natural gas has been separated into the different gas components by a Carlo-Erba 4200 instrument. The hydrocarbon gas components were oxydized in separate CuO-ovens, which enables us to collect several times when the concentration of a gas component is low. The combustion products CO₂ and H₂O were frozen into collection vessles and separated. The isotopic measurements were performed on a Finnigan Mat 251 mass spectrometer. Our $\delta^{13}\text{C}$ -value on NBS-22 is $- 29.77 \pm .06 \text{ ‰}$.

RESULTS

The results are given in the following table ;

	Methane	Ethane	Propane	i-Butane	n-Butane	CO ₂
$\delta^{13}\text{C} \text{ ‰} \times$	- 46.0	- 33.2	- 25.7	- 19.4	- 22.0	- 8.5

The $\delta^{13}\text{C}$ -values for methane, ethane, propane and n-butane have been plotted on the maturation diagram by James (1983)^{xx}

A good fit is found for the methane - ethane - propane - n-butane - separasjons. A source LOM of about 7, eq. to a vitrinite reflectance of about .5 is indicated for the gas.

^x Our uncertainty on the $\delta^{13}\text{C}$ -values is estimated to be $\pm .3 \text{ ‰}$ and includes all the different analyses steps.

^{xx} James, Alan T. (1983) : Correlation of natural Gas by Use of Carbon Isotopic Distribution Between Hydrocarbon Components, A.A.P.G. Vol. 67, No. 7, July, 1983.