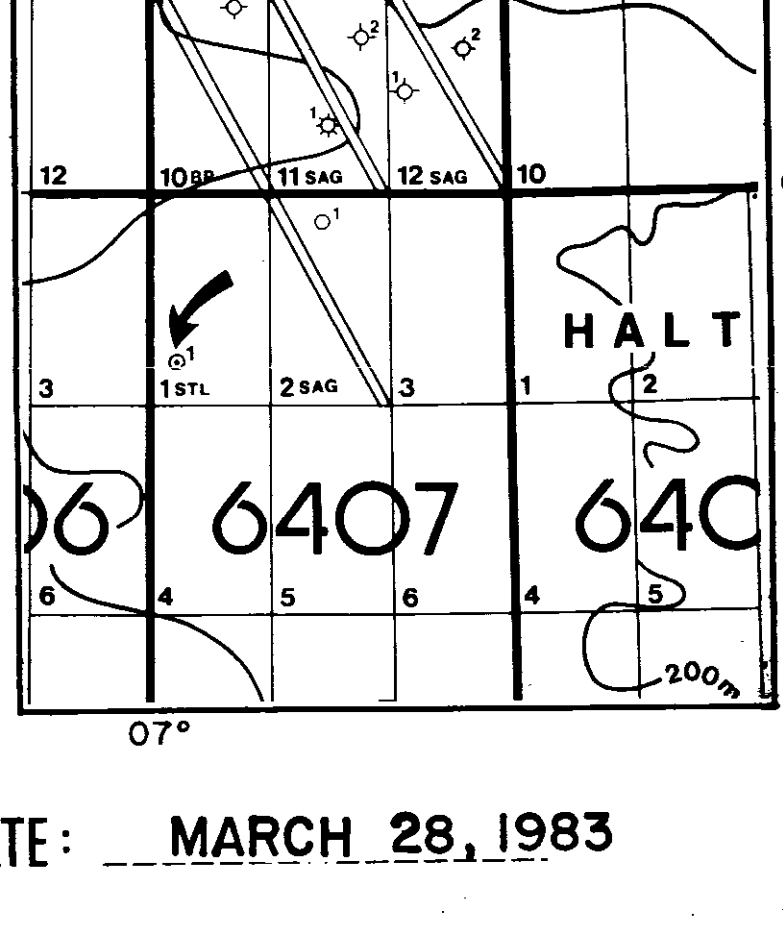


DIGITAL WIRELINE LOGS PACKAGE
 1995
 This image may not be used or reproduced
 without written permission from
 SIMON PETROLEUM TECHNOLOGY

COMPLETION LOG

statoil / AMOCO / CONOCO / NORSK HYDRO
6407/1-1
COMPLETION LOG
 Scale 1:500

COORDINATES: 64° 47' 51.66" N
 07° 02' 21.62" E
 K.B.: 29 m
 WATER DEPTH: 273 m
 TOTAL DEPTH: 900 m
 DEEPEST FORM. PEN.: NORDLAND GROUP
 SPUD DATE: OCTOBER 19, 1982
 RIG RELEASE DATE: NOVEMBER 13, 1982
 WELL STATUS: PLUGGED AND ABANDONED
 RIG: DYVI DELTA
 CONTRACTOR: DYVI DRILLING
 GEOLOGISTS: P. CLINT
 PREPARED BY: L. ANDERSSON / E. UNDERSRUD



CASING DATA:
 30" at 401 m
 20" at 879 m
 13 3/8" at
 9 5/8" at

VELOCITY SURVEY:

LOGS RUN

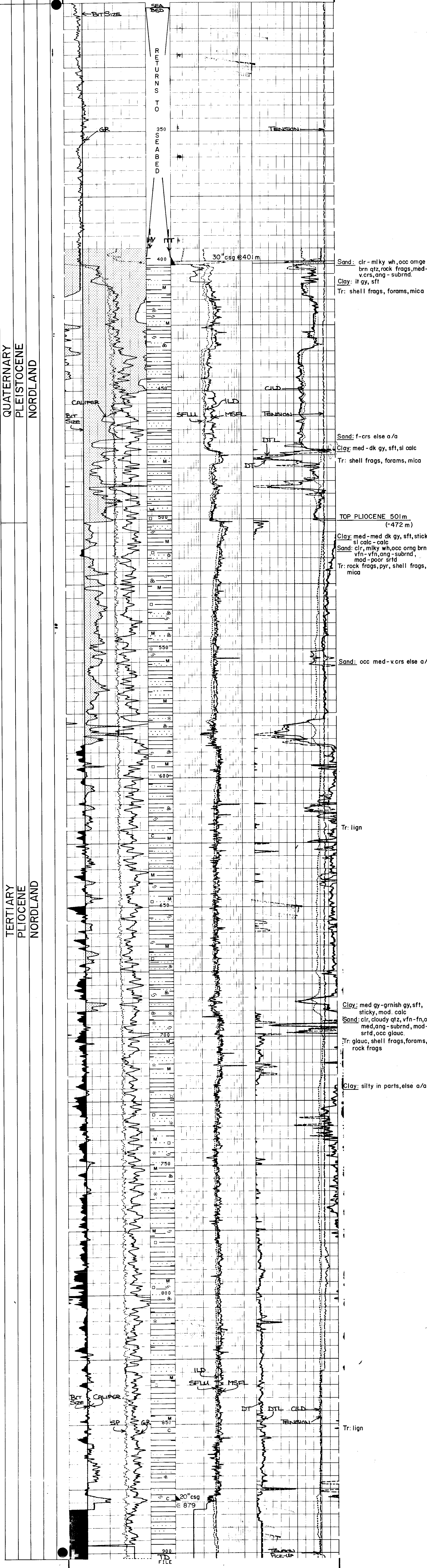
ISF/SONIC-MSFL-GR	LDL - CNL - GR				
RUN 1: 302-898	RUN 1: 401-899				

LITHOLOGIC SYMBOLS

SAND SANDSTONE	LIMESTONE	ANHYDRITE	FORAMS	PYRITE	MICA
SILT SILTSTONE	CHALK	COAL LIGNITE	WOOD FRAGS	GLAUCONITE	STYLOLITES
CLAY CLAYSTONE	DOLOMITE	TUFF	FOSSILS GEN'L	CHERT	BURROWS
SHALE	MARL	SALT	SHELL FRAGS	SIDERITE	FRACTURES

SHOW OR STAIN HYDROCARBON CUT FLUORESCENCE GAS SHOW

SIDEWALL CORES CORES DST CASING SHOE/LINER
 REC. REC. W/SHOW CORE NO. 101



CAL (IN)	30.00	MSFL (DMM)	20.00	MSFL (DMM)	20.00
GR (GAP)	100.0	ILD (DMM)	20.00	ILD (DMM)	20.00
SP (MV)	100.0	SFLU (DMM)	20.00	SFLU (DMM)	20.00
		LLD (DMM)	20.00	LLD (DMM)	20.00
		SFLU (DMM)	20.00	SFLU (DMM)	20.00
		DTL (US/F)	40.00	DTL (US/F)	40.00
		TENS (LB)	40.00	TENS (LB)	40.00
		DT (US/F)	40.00	DT (US/F)	40.00

SENSOR MEASURE POINT TO TENSION REFERENCE POINT		SENSOR MEASURE POINT TO TENSION REFERENCE POINT	
CBL 17.4 METER	TT1 18.0 METER	ANPL 17.4 METER	SRAT 19.8 METER
TT3 18.3 METER	GR 14.6 METER	TT2 18.3 METER	TT4 18.8 METER
ILD 7.6 METER	SP 5.7 METER	CALI 7.9 METER	SFL 7.5 METER
TENS 5.7 METER	IL 9 METER	SR2 5.7 METER	CHSF 7.8 METER
DIS 14.9 METER			

PARAMETERS			
NAME	VALUE	UNIT	
DT	12.25	IN	BS
DTM	198.0	US/F	CBTS
DSEC	4.500	MMHD	DYF
SFT STAIN	1.000		SR
DD	0.0		BHS
			OPEN